



[Home](#) » [dals](#) » **dals DCP-FLD30 Smart Flood Light Installation Guide** 

Contents [[hide](#)]

- [1 dals DCP-FLD30 Smart Flood Light](#)
- [2 ITEMS INCLUDED IN THE BOX](#)
- [3 Installation guide](#)
- [4 Smart connection guide](#)
- [5 FCC STATEMENT](#)
- [6 Documents / Resources](#)
 - [6.1 References](#)

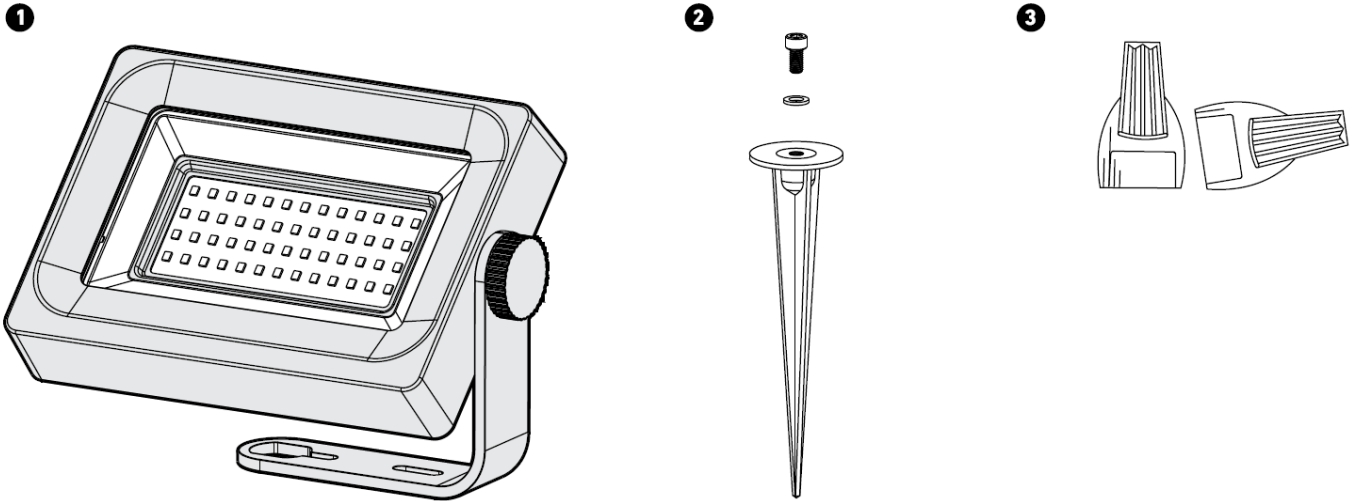
dals

dals DCP-FLD30 Smart Flood Light



MOOEL	WATTS	LUMENS	KELVIN	INPUT	DIMMA BLP
DCP-FLD30	30W	3000 lm	RGB + CCT 220 0-4000K	24VDC	

ITEMS INCLUDED IN THE BOX



1. 30W LED landscape floodlight
2. 6" ground stake
3. 2 Waterproof Wire Nuts

COMPATIBLE ACCESSORIES (SOLD SEPARATELY):

- **DCP-TR60-BK:** Transformer- Max. 60W
- **DCP-TR200-BK:** Transformer- Max. 200W
- **DCP-TR300-BK:** Transformer- Max. 300W
- **DCP-PTR36:** Plug-in driver- 36W
- **DCP-ACC-MB:** Mounting bracket
- **DCP-ACC-MS12:** Metal ground stake 1 2"
- **DCP-ACC-MS06:** 6" metal stake
- **LCBL-50-16:** 50 ft. 16 gauge low-voltage wire
- **LCBL-50-14:** 50 ft. 14 gauge low-voltage wire
- **LCBL-100-16:** 100 ft. 16 gauge low-voltage wire
- **LCBL-100-14:** 100 ft. 14 gauge low-voltage wire

- **LCBL-100-12:** 100 ft. 12 gauge low-voltage wire
- **12 LCBL-200-12:** 200 ft. 12 gauge low-voltage wire

WARRANTY

DALS offers a 5 year warranty from the date of purchase which covers repairs or replacements of defective parts of the housing, optics, and electronics.

To contact DALS customer service call 1 877 430 1818 or send an e-mail to info@dals.com

Installation guide

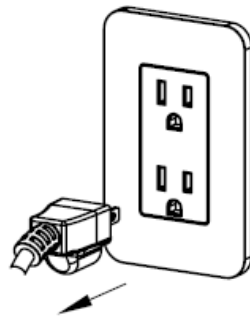
BEFORE YOU START

BEFORE STARTING INSTALLATION, SHUT THE LINE FEED POWER OFF USING THE CIRCUIT BREAKER.

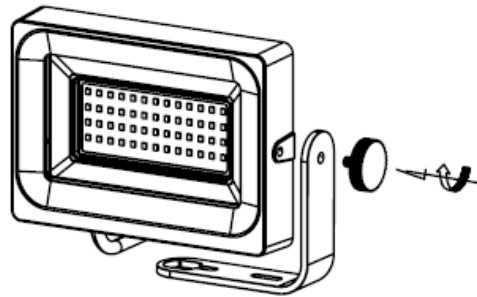
Instructions pertaining to a risk of fire. electric shock or injury to persons. Installation must be done according to local electrical codes. Installation should be done by a certified electrician.

Installation with ground stake

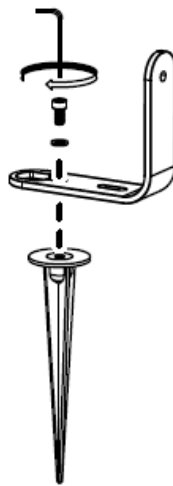
1. Make sure the power to the transformer is turned off.
 - 2* Remove the fixture body for an easier access to the “L” support.
2. Position the “L” support bracket onto the stake and tighten the nut.



1

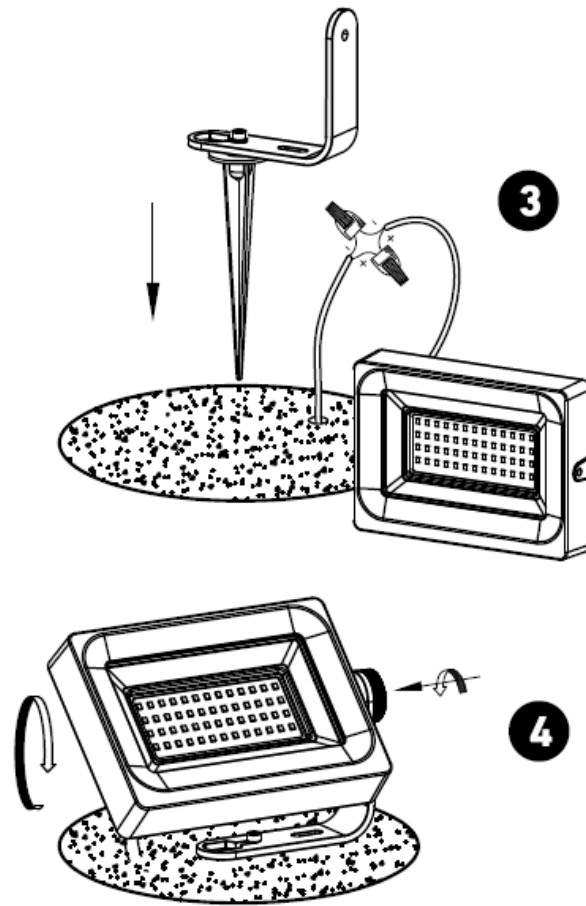


2*



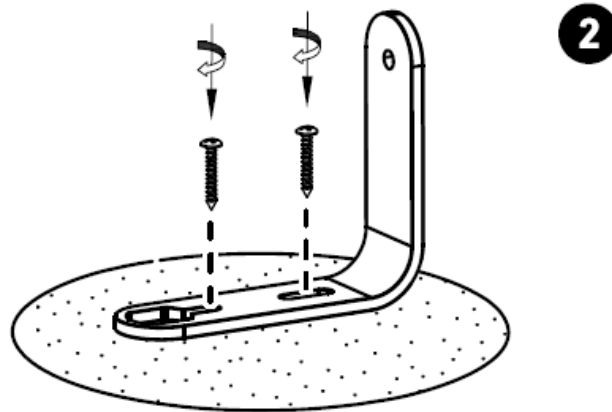
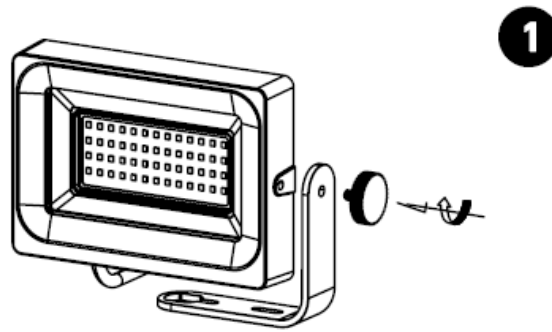
2

3. Make the connections by making sure to respect the polarities (black = positive, white = negative) and then, with your foot, insert the stake into the ground.
4. Rotate the fixture body to the desired orientation. Secure with the adjustment wheel.



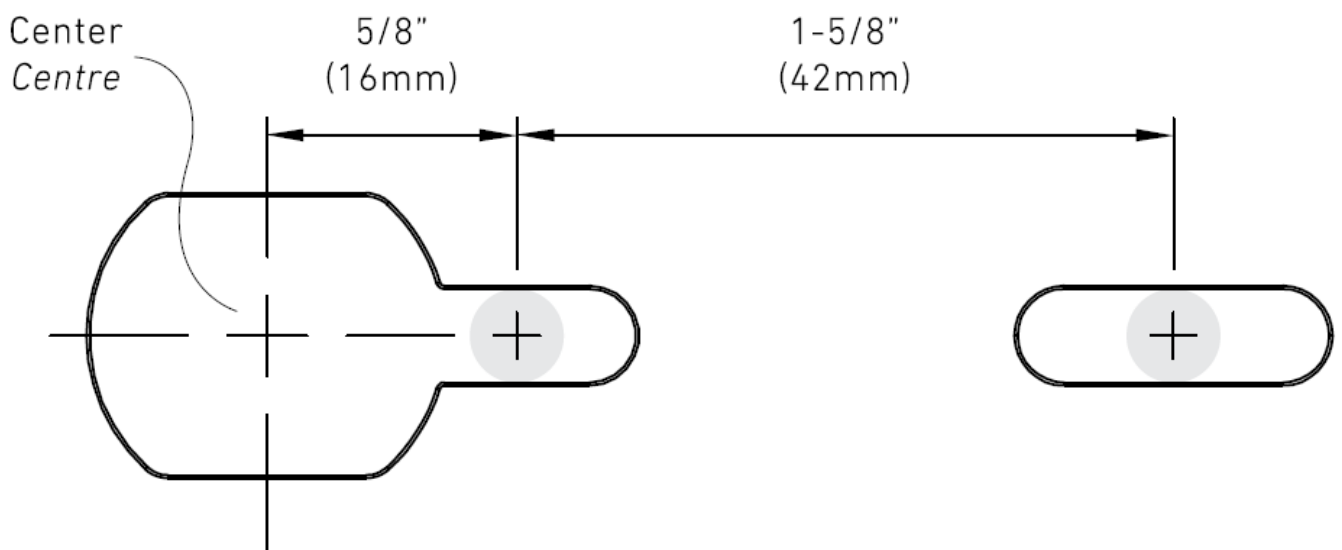
Installation with the “L” bracket

1. Remove the fixture body for easier access to the “L” support.
2. Screw the “L” support on the surface by using the two slots. (Screws not included)



(Screws not included /
Vis non incluses)

Mounting template

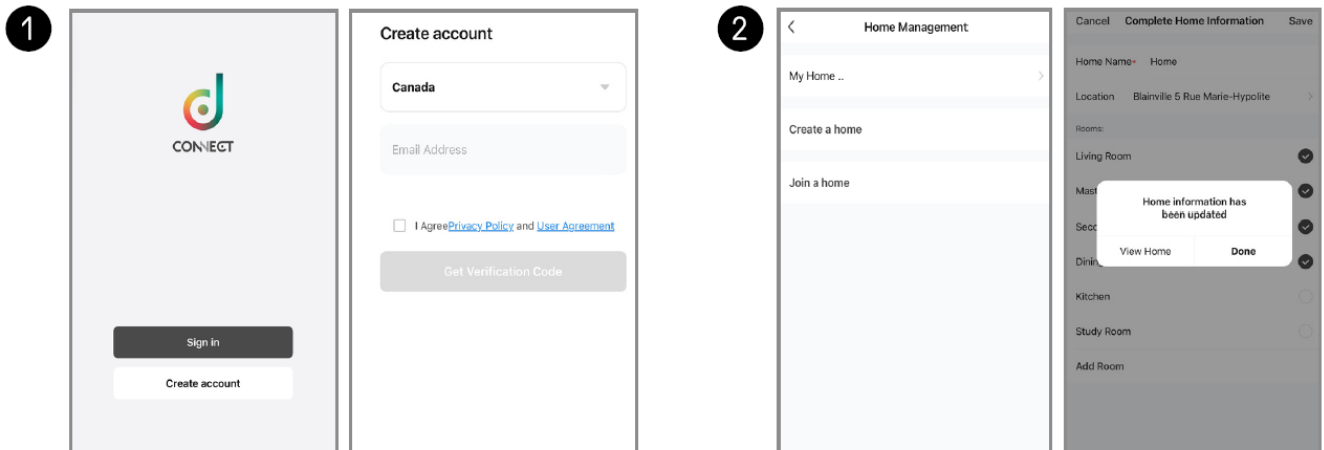


Smart connection guide

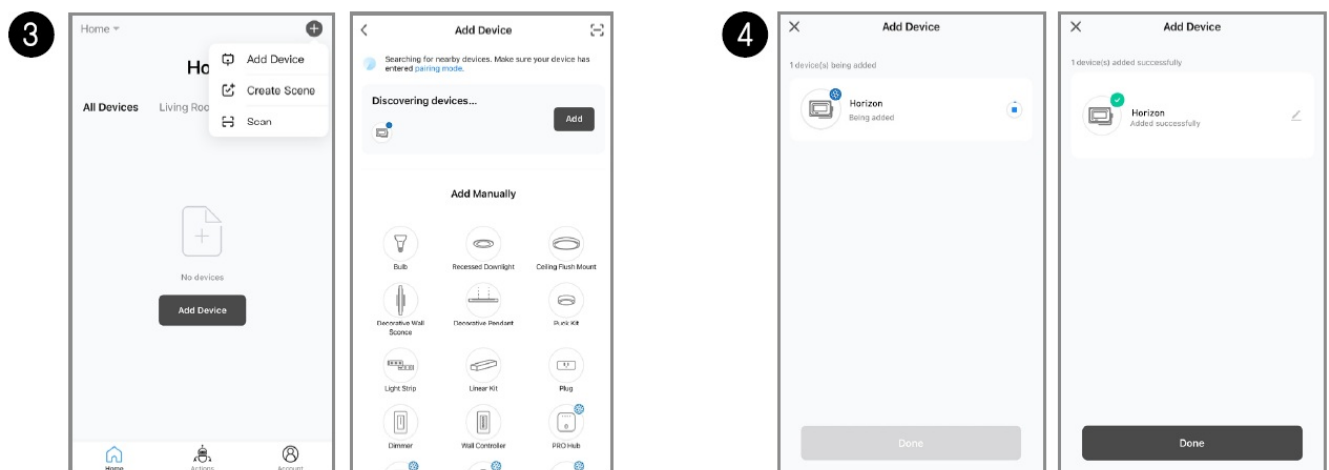
1. Download the Dais Connect app from the Apple App Store or the Google Play Store and register for a new account if this is your first time. The app requires a valid email

address since it will need a verification code for you to log in.

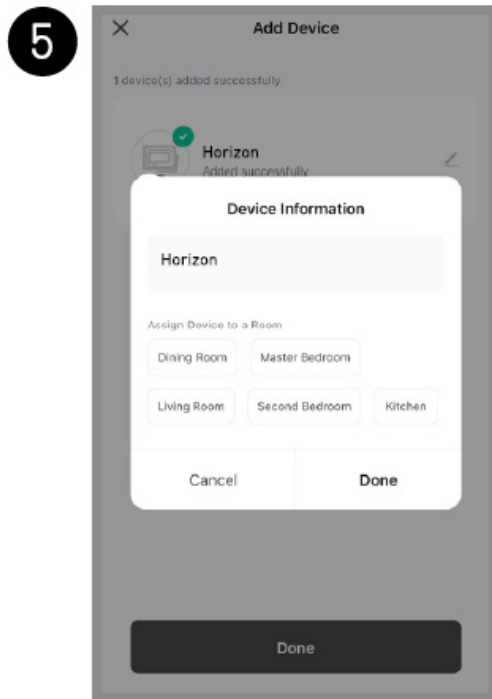
2. Configure your profile and set your home inside the app. This will allow you to control light groups and create advanced automation based on your location.



3. In the Dais Connect app, press on the “+ • sign in the upper right corner and select “Add Device”. If your product support bluetooth pairing, it will show up right away at the top under “Add Device”. If you have an older Wi-Fi product, select the product from the list and follow the instructions from the app.
4. On this next step, your light will be added to the app. If you are connecting multiple products at once, they will be added in a batch. From here you can either click “Done” at the bottom, or click on the “pen” to rename the light.



5. (Optional) Rename your light and add it to one of your rooms.
6. Control your lights! Now that a group has been assigned, use your remote to control your lights.



FCC STATEMENT

1. This device complies with Part 15 of the FCC Rules. Operation is subject to the following two conditions: (1) This device may not cause harmful interference, and (2) This device must accept any interference received, including interference that may cause undesired operation.
2. Changes or modifications not expressly approved by the party responsible for compliance could void the user's authority to operate the equipment.

This equipment has been tested and found to comply with the limits for a Class B digital device, pursuant to part 15 of the FCC Rules. These limits are designed to provide reasonable protection against harmful interference in a residential installation. This equipment generates, uses and can radiate radio frequency energy and, if not installed and used in accordance with the instructions, may cause harmful interference to radio communications. However, there is no guarantee that interference will not occur in a particular installation. If this equipment does cause harmful interference to radio or television reception, which can be determined by turning the equipment off and on, the user is encouraged to try to correct the interference by one or more of the following measures:

- Reorient or relocate the receiving antenna.
- Increase the separation between the equipment and receiver.

- Connect the equipment into an outlet on a circuit different from that to which the receiver is connected.
- Consult the dealer or an experienced radio/ TV technician for help.

FCC Radiation Exposure Statement:

This equipment complies with FCC radiation exposure limits set forth for an uncontrolled environment. In order to avoid the possibility of exceeding the FCC radio frequency exposure limits, Human proximity to the antenna shall not be less than 20cm (8 inches) during normal operation

IC COMPLIANCE – CANICES-5(*)/NMB-5(*)**Industry Canada Notice**

This device contains licence-exempt transmitter(s)/receiver(s) that comply with Innovation, Science and Economic Development Canada's licence-exempt RSS(s). Operation is subject to the following two conditions:

- (1) This device may not cause interference.
- (2) This device must accept any interference, including interference that may cause undesired operation of the device

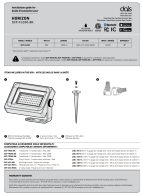
Changes or modifications not expressly approved by the party responsible for compliance could void the user's authority to operate the equipment.

ISED RF Exposure statement

This equipment complies with ISED radiation exposure limits set forth for an uncontrolled environment. In order to avoid the possibility of exceeding the ISED radio frequency exposure limits, Human proximity to the antenna shall not be less than 20cm (7.9 inches) during normal operation

www.dals.com

Documents / Resources



[dals DCP-FLD30 Smart Flood Light \[pdf\]](#) Installation Guide

DCP-FLD30-BK, DCP-FLD30 Smart Flood Light, Smart Flood Light, Flood Light, Light

References

- [User Manual](#)

📎 dals, DCP-FLD30 Smart Flood Light, DCP-FLD30-BK, Flood Light, Light, Smart Flood

📁 dals Light

Leave a comment

Your email address will not be published. Required fields are marked *

Comment *

Name

Email

Website

☐ Save my name, email, and website in this browser for the next time I comment.

Post Comment

Search:

e.g. whirlpool wrf535swhz

Search

[Manuals+](#) | [Upload](#) | [Deep Search](#) | [Privacy Policy](#) | [@manuals.plus](#) | [YouTube](#)

This website is an independent publication and is neither affiliated with nor endorsed by any of the trademark owners. The "Bluetooth®" word mark and logos are registered trademarks owned by Bluetooth SIG, Inc. The "Wi-Fi®" word mark and logos are registered trademarks owned by the Wi-Fi Alliance. Any use of these marks on this website does not imply any affiliation with or endorsement.