



DALI HF LS L Sensor Coupler Instruction Manual

[Home](#) » [DALI](#) » DALI HF LS L Sensor Coupler Instruction Manual 



DALI HF LS LI

Luminaire Integrated Light and Presence Sensor and DALI Coupler

GETTING STARTED

Contents

- 1 OVERVIEW
- 2 PRODUCT SAFETY
- 3 DALI LS LI COUPLER FEATURES
- 4 FACTORY DEFAULT SETTINGS
- 5 SENSOR DETECTION RANGE
- 6 VISIT OUR HELP CENTER
- 7 Documents / Resources
 - 7.1 References
- 8 Related Posts

OVERVIEW

The DALI HF LS LI is a High-Frequency Light Sensing Luminaire Integrated Sensor and Coupler designed to incorporate light and presence sensing control of your DALI luminaire into the Encelium X Lighting Control System. For more information on product specifications and design tools visit [ancelium.com](https://www.ancelium.com).

PRODUCT SAFETY

READ THESE INSTRUCTIONS BEFORE USING THE PRODUCT

When using electrical equipment, basic safety precautions should always be followed, including the following:



Do not mount near gas or electric heaters or let power supply cords touch hot surfaces.



Equipment should be mounted in locations and at heights where it will not readily be subjected to tampering by unauthorized personnel.



The use of accessory equipment is not recommended by Encelium as it may cause an unsafe condition.



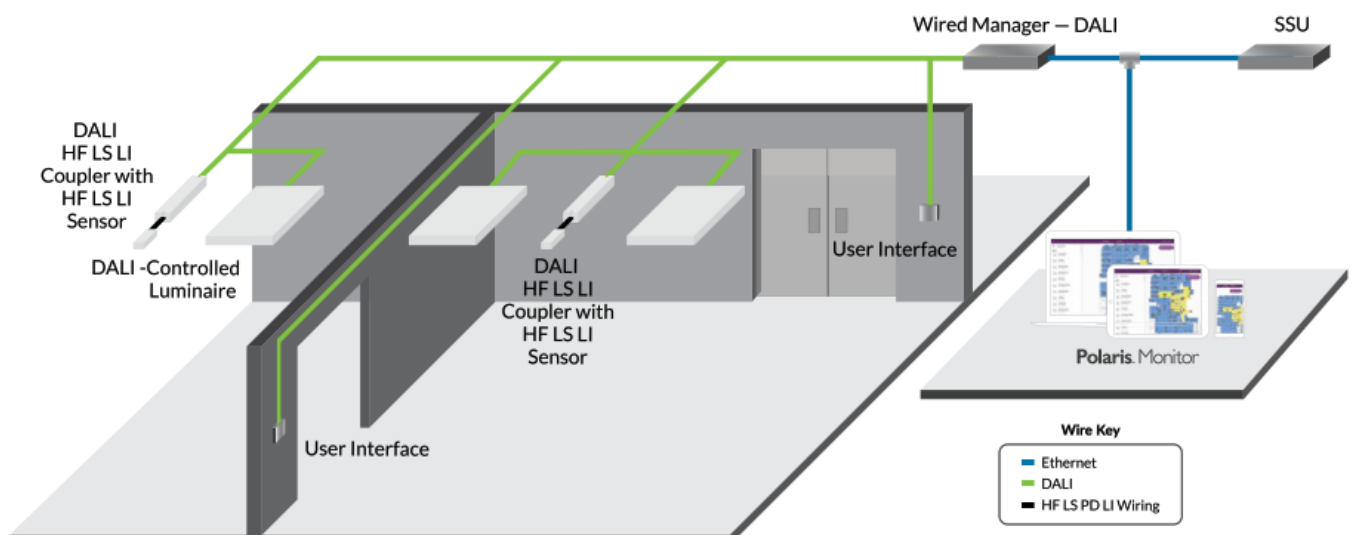
All DALI channels are internally connected together to the control unit. Make sure to consider this when installing.



Do not use this equipment for other than the intended use.

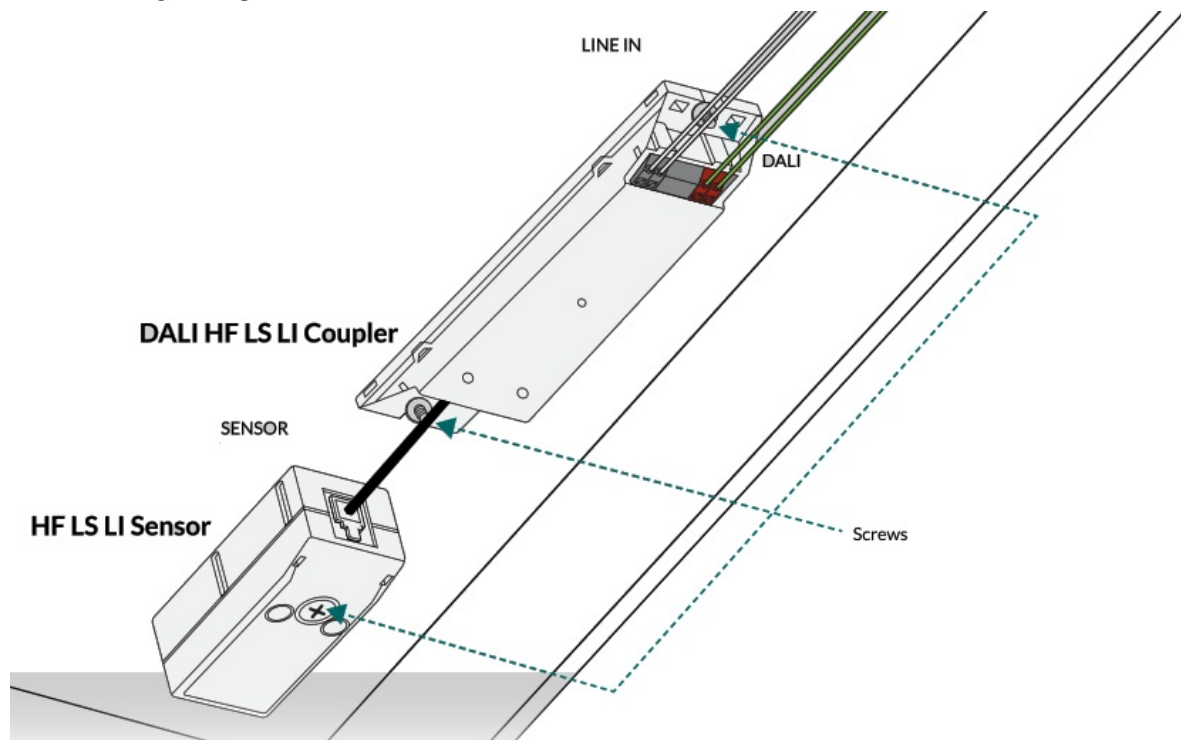
SAVE THESE INSTRUCTIONS.

WIRED SYSTEM OVERVIEW



Encelium X enables you to control DALI devices. With any Encelium wired design, you get a reliable, lighting control system that can be installed quickly and easily.

STEP 1 LUMINAIRE INTEGRATION

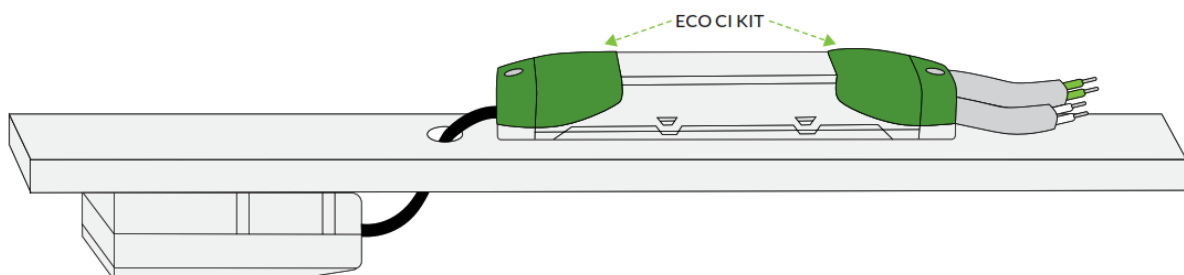


The DALI HF LS LI Coupler is intended for luminaire integration which enables the luminaire to be controlled wirelessly and the Sensor is designed specifically for luminaire integration and requires direct connection to the DALI HF LS LI Coupler. Secure the DALI HF LS LI Coupler and the HF LS LI Sensor to the luminaire using screws (not included). Make sure they are mounted close enough so the included sensor cable can be connected. The DALI HF LS LI is to be installed in dry, indoor locations ONLY. Recommended input voltage is 220 to 240 V, 50/60 Hz. Maximum of 300 m (984 ft) total wire length for DALI and third-party sensor interface.

Note: Once the DALI HF LS LI Coupler is connected to power, press the SELECT button to switch on the LED Indicator. Another short press to the SELECT button will switch off the LED Indicator, otherwise the LED Indicator will switch off after 30 seconds.

Proceed to Step 2 if you are not using Luminaire Integration.

STEP 2 INDEPENDENT CEILING INTEGRATION (OPTIONAL)

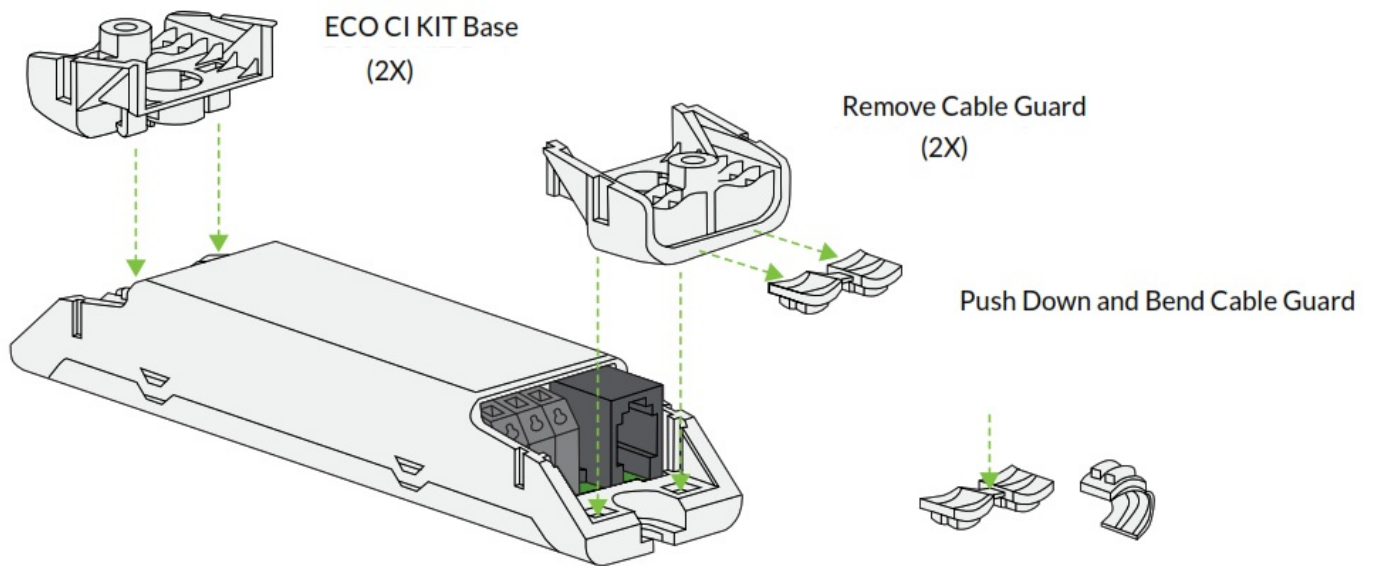


Independent Ceiling Integration is possible with installation of the ECO CI KIT (ordered separately), a strain relief housing kit. The DALI HF LS LI Coupler requires the installation of an ECO CI KIT to ensure protection from electrical contact. The DALI HF LS LI Coupler is to be installed in dry, indoor locations ONLY. Recommended input voltage is 220 to 240 V, 50/60 Hz. Maximum of 300 m (984 ft) total wire length for DALI and third-party sensor interface.

Note: Once the DALI HF LS LI Coupler is connected to power, press the SELECT button to switch on the LED Indicator. Another short press to the SELECT button will switch off the LED Indicator, otherwise the LED Indicator will switch off after 30 seconds.

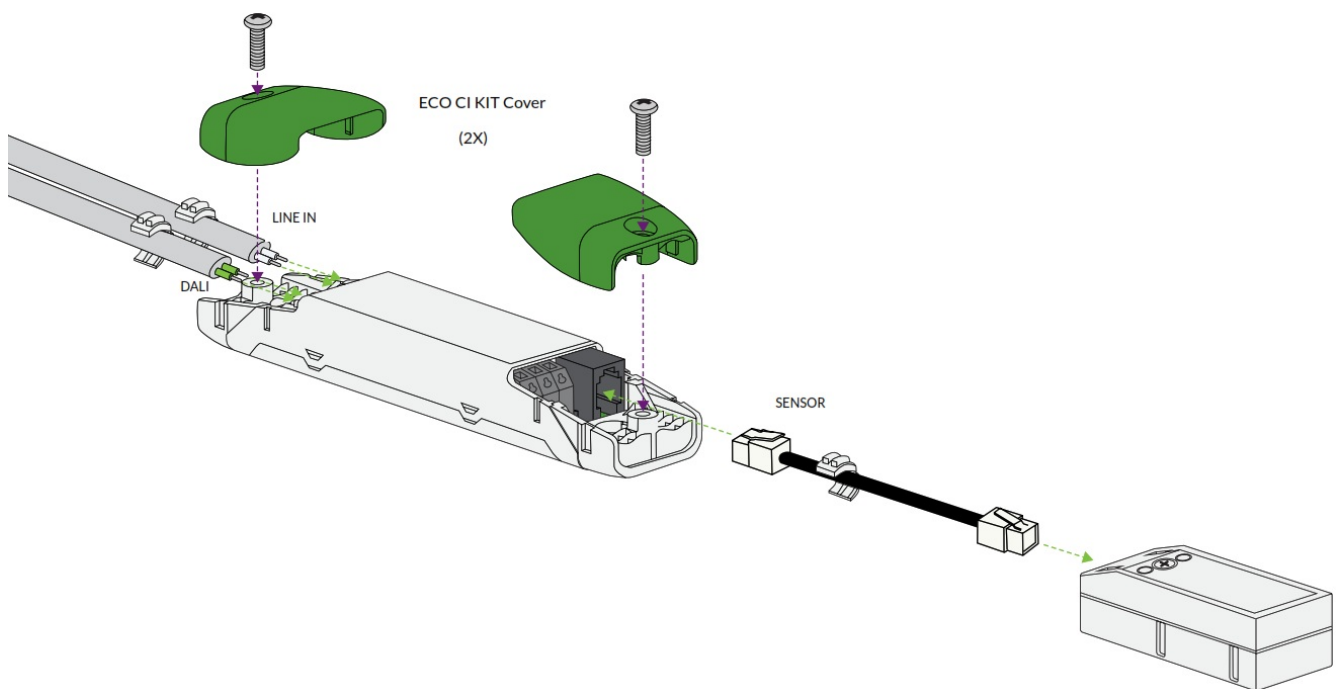
Proceed to DALI HF LS LI Coupler Features if you are not using Independent Ceiling Integration.

STEP 3



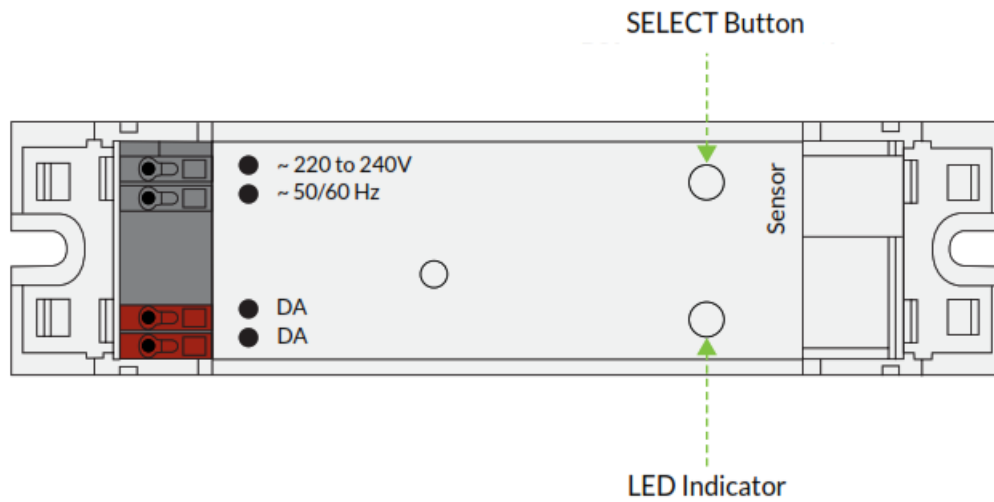
Remove cable guards from the ECO CI KIT bases and place ECO CI KIT bases onto the DALI HF LS LI Coupler. Push the center of the cable guard down and bend, enabling the cable guard to wrap around the cable.

STEP 4



Install the cable guards on the LINE IN, DALI, and SENSOR cables then connect the wires into the DALI HF LS LI Coupler ports. Place the ECO CI KIT covers onto the DALI HF LS LI Coupler and tighten the screws. Connect the HF LS LI Sensor via the 4-pol RJ10 socket (4P4C) marked as 'Sensor' on the housing top. Only one HF LS LI Sensor should be connected to the DALI HF LS LI Coupler.

DALI LS LI COUPLER FEATURES

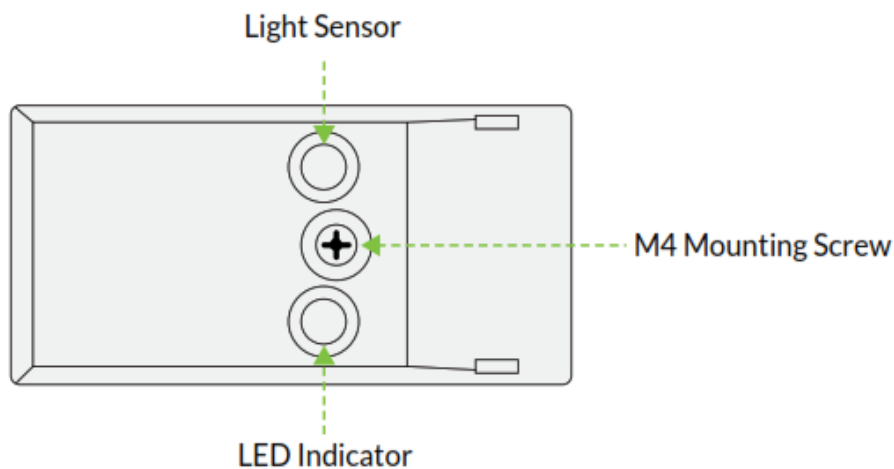


DALI HF LS LI Coupler features a SELECT Button and LED Indicator. The SELECT Button enables you to identify a device and reset to factory default settings. The LED Indicator displays green or red lights (see the DALI HF LS LI Coupler LED Indicator details below).

DALI HF LS LI Coupler LED Indicator Lights

- Green LED Indicator Flashes: Indicates motion detection.
- Red LED Indicator: Indicates a user has entered OSRAM proprietary mode.

HF LS LI SENSOR FEATURES

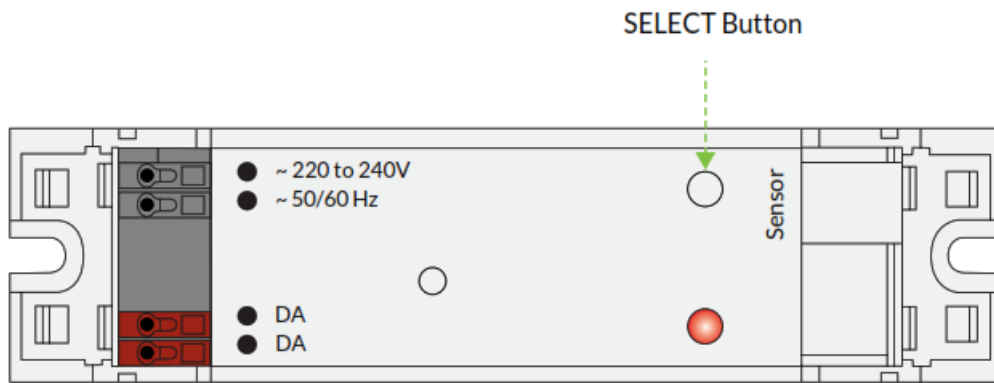


HF LS LI Sensor features a Light Sensor and an LED Indicator that displays green or red light (see the HF LS LI Sensor LED Indicator details below).

HF LS LI Sensor LED Indicator Lights

- Green LED Indicator Flashes: Motion is detected.
- Green LED Indicator Illuminates Continuously: Motion detection is temporarily deactivated.
- Red LED Indicator Flashes 3 Times: IR Signal of remote control has been received.
- Red LED Indicator Flashes 1 Time: Vibration has been detected.
- Red LED Indicator Illuminates Continuously: 100h burn-in is active.

FACTORY DEFAULT SETTINGS



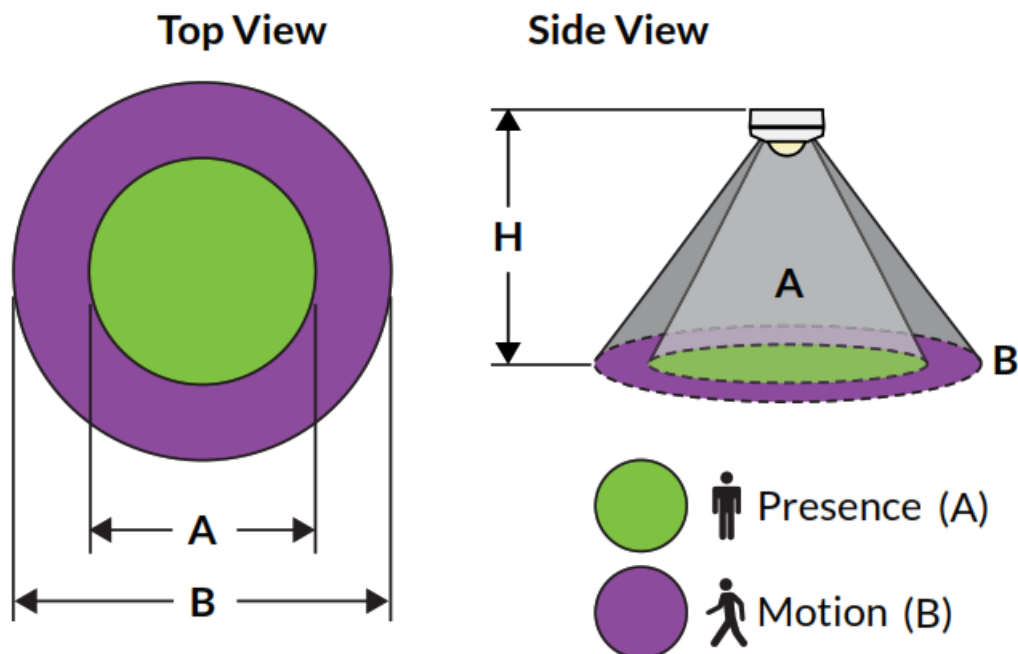
With the power connected to the DALI HF LS LI, press and hold the SELECT Button for about 10 seconds until the LED Indicator blinks red for 4 seconds. The DALI HF LS LI is then reset to the factory default settings.

Note: Resetting to factory default settings will delete the DALI short address and require the device to be re-commissioned.

SENSOR DETECTION RANGE

The detection range of the HF LS LI Sensor must be set before it can detect motion.

Coverage Area



Sensor Detection Range

	Presence	Motion
Mounting Height (H)	8 m (26.2 ft)	13 m (43 ft)
Detection Range	15 m (49.2 ft)	25 m (82 ft)
Coverage Area	35° x 80°	35° x 80°

VISIT OUR HELP CENTER



<https://help.encelium.com/category/zo5v0jr3ss-installation-and-site-readiness>

For instructions to install, configure, test, or use Encelium products or systems, or to contact an Encelium Technical Support Specialist, please scan the QR code or visit help.encelium.com.

Copyright © 2022 Digital Lumens, Incorporated. All rights reserved. Digital Lumens, the Digital Lumens logo, We Generate Facility Wellness, SiteWorx, LightRules, Lightelligence, Encelium, the Encelium logo, Polaris, GreenBus and any other trademark, service mark, or tradename (collectively “the Marks”) are either trademarks or registered trademarks of Digital Lumens, Inc. in the United States and/or other countries, or remain the property of their respective owners that have granted Digital Lumens, Inc. the right and license to use such Marks and/or are used herein as nominative fair use. Due to continuous improvements and innovations, specifications may change without notice.


ENCELIUM

DALI HF LS LI Installation Instructions

DOC-000454-00 Rev B 11-22

[encelium.com](https://help.encelium.com)

Documents / Resources

	<p>DALI HF LS L Sensor Coupler [pdf] Instruction Manual HF LS L Sensor Coupler, HF LS L, Sensor Coupler, Coupler</p>
---	--

References

- [E Encelium - Exceptional Lighting Management](#)
- [E Encelium Help Center](#)