



DALBER C3 Ceiling Lamp Instruction Manual

[Home](#) » [DALBER](#) » DALBER C3 Ceiling Lamp Instruction Manual 

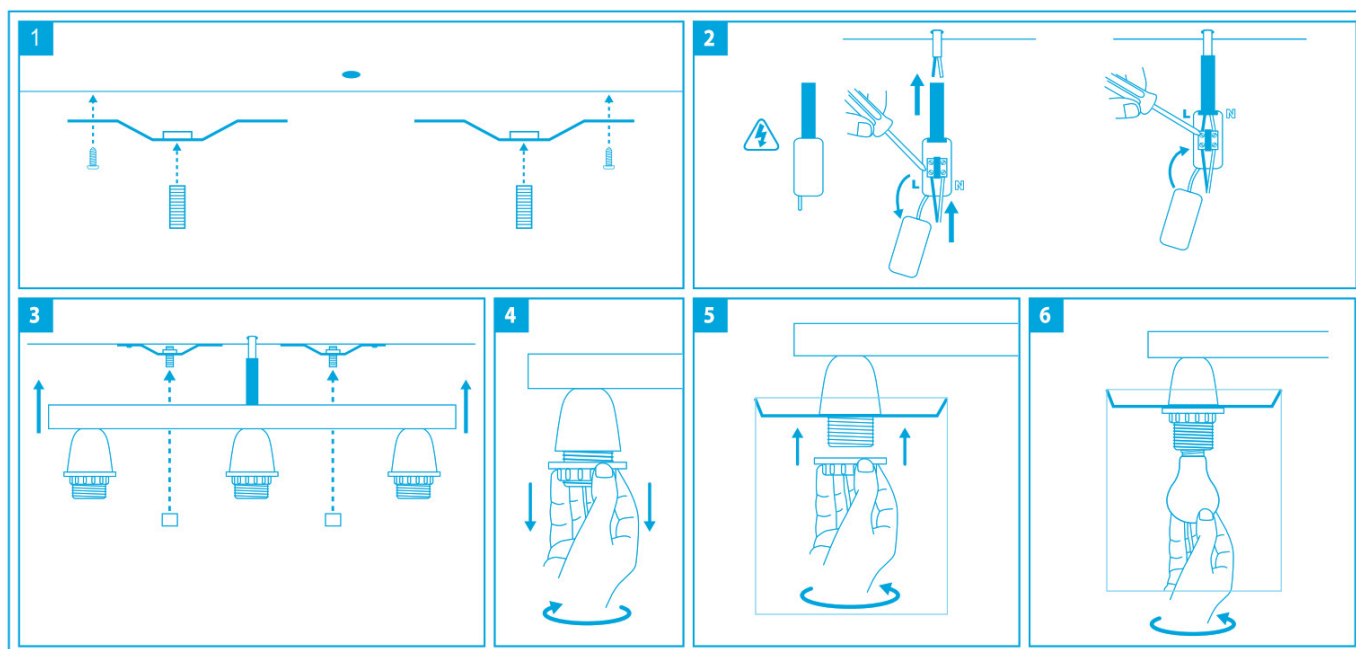


SINCE 1988

Contents

- [1 C3 Ceiling Lamp](#)
- [2 For your health and Safety:](#)
- [3 Environmental protection](#)
- [4 Documents / Resources](#)
- [5 Related Posts](#)

C3 Ceiling Lamp



For your health and Safety:

This product is for indoor use only. Ensure power supply has been disconnected before installation, maintenance or repair. Electrical appliances must only be connected by competent persons. Your national safety regulations must be observed. Ensure you use bulb type recommended. Do not use a bulb which exceeds the maximum recommended wattage. To clean, wipe clean with a soft cloth. Do not allow moisture to come into contact with electrical parts. Please retain these instructions for future reference.

Environmental protection



The symbol on this product dictates that Waste Electrical Products should not be disposed of with household waste. Please recycle where facilities exist. Check with your local authority or retailer for recycling advice.

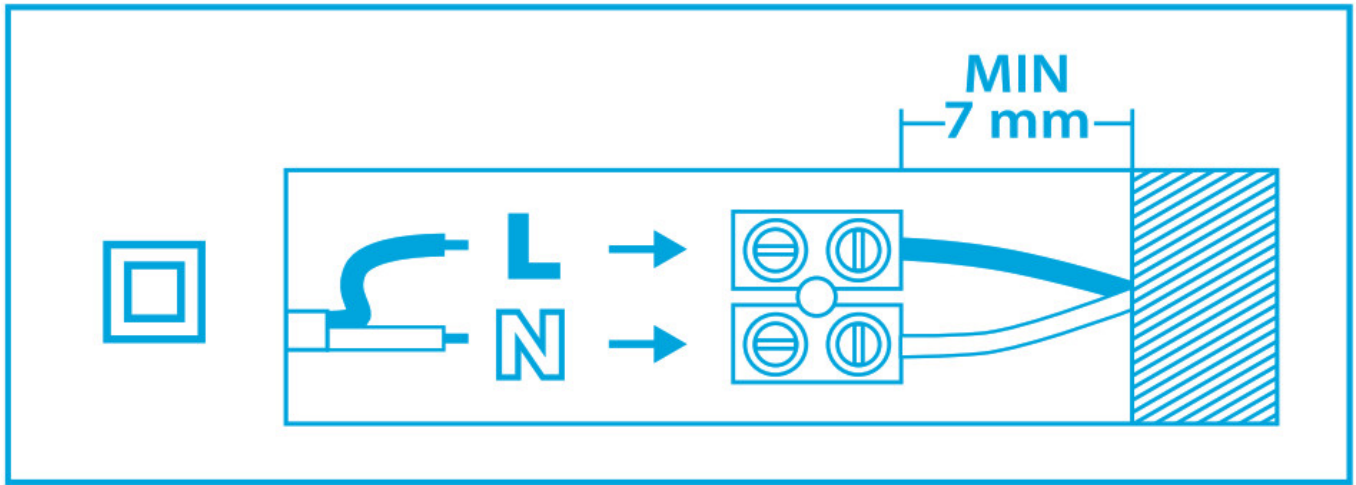
Terminals



Live
Black or brown



Blue



DALBER, S.L. Pol. Ind. nº1
 • Avda. Alemania, 53-55 03420 Castalla (Alicante) SPAIN T 96 556 13 15
info@dalber.com
www.dalber.com

1 x 15W Max LED • E-27 230 V — 50-60 Hz
 Cos p = 1



Documents / Resources

	<p>DALBER C3 Ceiling Lamp [pdf] Instruction Manual C3 Ceiling Lamp, C3, Ceiling Lamp, Lamp</p>
--	---