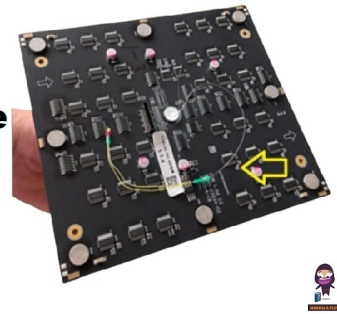


**NPN-4600
Series Remove
Removal Tool
from the
Module**



DAKTRONICS NPN-4600 Series Remove Removal Tool from the Module User Guide

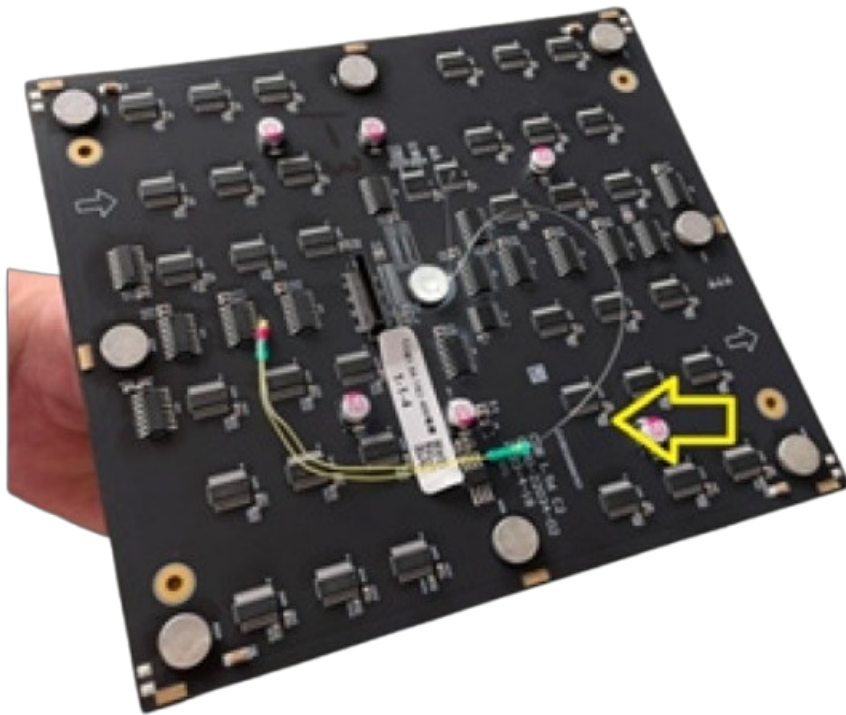
[Home](#) » [DAKTRONICS](#) » DAKTRONICS NPN-4600 Series Remove Removal Tool from the Module User Guide 

Contents

- [1 DAKTRONICS NPN-4600 Series Remove Removal Tool from the Module](#)
- [2 Service](#)
- [3 Hub Board Exchange](#)
- [4 Receiver Card Exchange](#)
- [5 Power Supply Exchange](#)
- [6 Module Lanyard Installation \(Optional\)](#)
- [7 Contact](#)
- [8 FAQ](#)
- [9 Documents / Resources](#)
 - [9.1 References](#)



DAKTRONICS NPN-4600 Series Remove Removal Tool from the Module



Service

Module Removal

1. Disconnect power to the display.
2. Ensure the face of the supplied removal tool is free of dust and metal filings that can damage the modules and LEDs. Refer to Figure 1 and Figure 2.

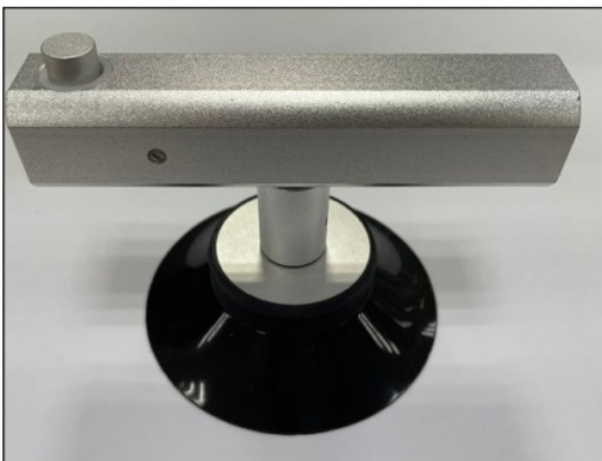


Figure 1: Removal Tool

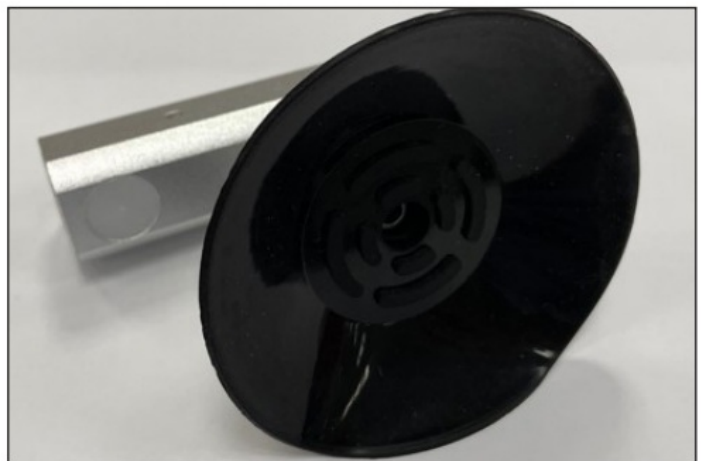


Figure 2: Face of the Tool

3. Place the magnetic removal tool face on the center of the module to be removed. Apply pressure with the removal tool until the suction created can carry the module. Refer to Figure 3.
4. Hold the removal tool by hand and pull the module straight out. Refer to Figure 4 . Do not tilt the module.



Figure 3: Push Removal Tool onto the Module



Figure 4: Pull the Module out by Holding the Removal Tool

5. Holding the module with the removal tool, carry the module to a safe place. Push the button to let air into the cup. Remove the tool from the module. Refer to Figure 5.

Complete all power and signal connections prior to module installation.

Hub Board Exchange

1. Disconnect power to the display.
2. Remove the signal cable, if present.
3. Remove all of the modules from the affected cabinet. Refer to Module Removal (p.1).
4. Disconnect the DC power jumpers, two on the top and two on the bottom, between hub boards.
5. Remove the two screws securing the power supply.
6. Remove the eleven screws securing the hub board and then remove the hub board. When reinstalling a hub board, ensure the four black countersink screws are used in the four outer corners and the seven silver pan head screws are used in the remaining locations. Refer to Figure 6.



Figure 3: Push Removal Tool onto the Module



Figure 4: Pull the Module out by Holding the Removal Tool

Reverse these steps to install a hub board

Receiver Card Exchange

1. Disconnect power to the display.
2. Refer to the Hub Board Exchange (p.1) process as a required step to access the receiver card.
3. Flip the hub board to find the receiver card. Refer to the bottom right of Figure 6.
4. Remove the two screws to release the receiver card. Refer to Figure 7.

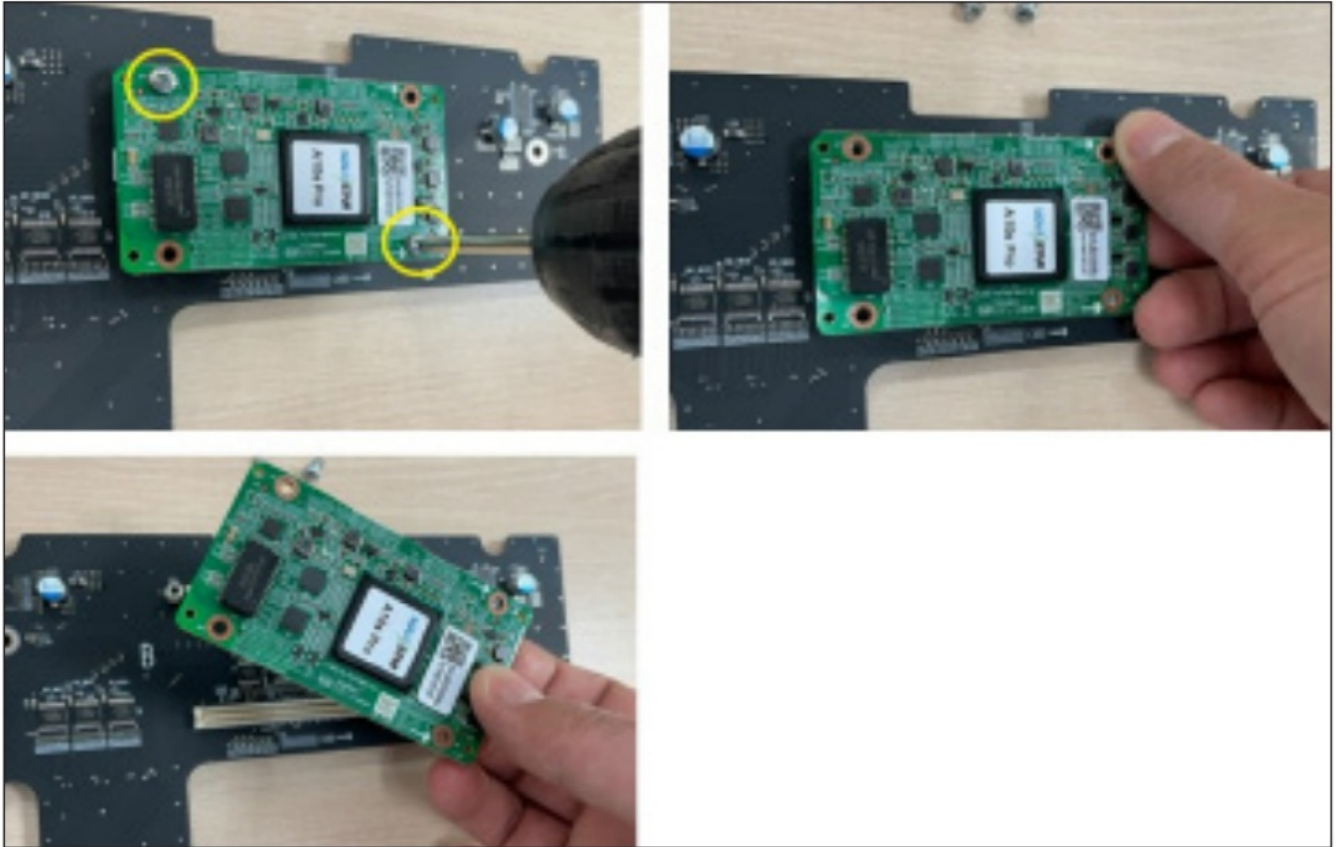


Figure 7: Remove the Receiver Card

Reverse these steps to install a receiver card. Ensure the receiver card is firmly pressed into the hub board and the jacks are fully seated. After the receiver card is replaced, reverse the steps in Module Removal (p.1) to re-install the module(s). Refer to the contract-specific Shop and Riser Drawings for specific routing details.

Note: Check the receiver card's orientation to make sure the jack connector fits the hub board.

Power Supply Exchange

1. Disconnect power to the display.
2. Remove the AC power connector on the power supply. Refer to Figure 8.

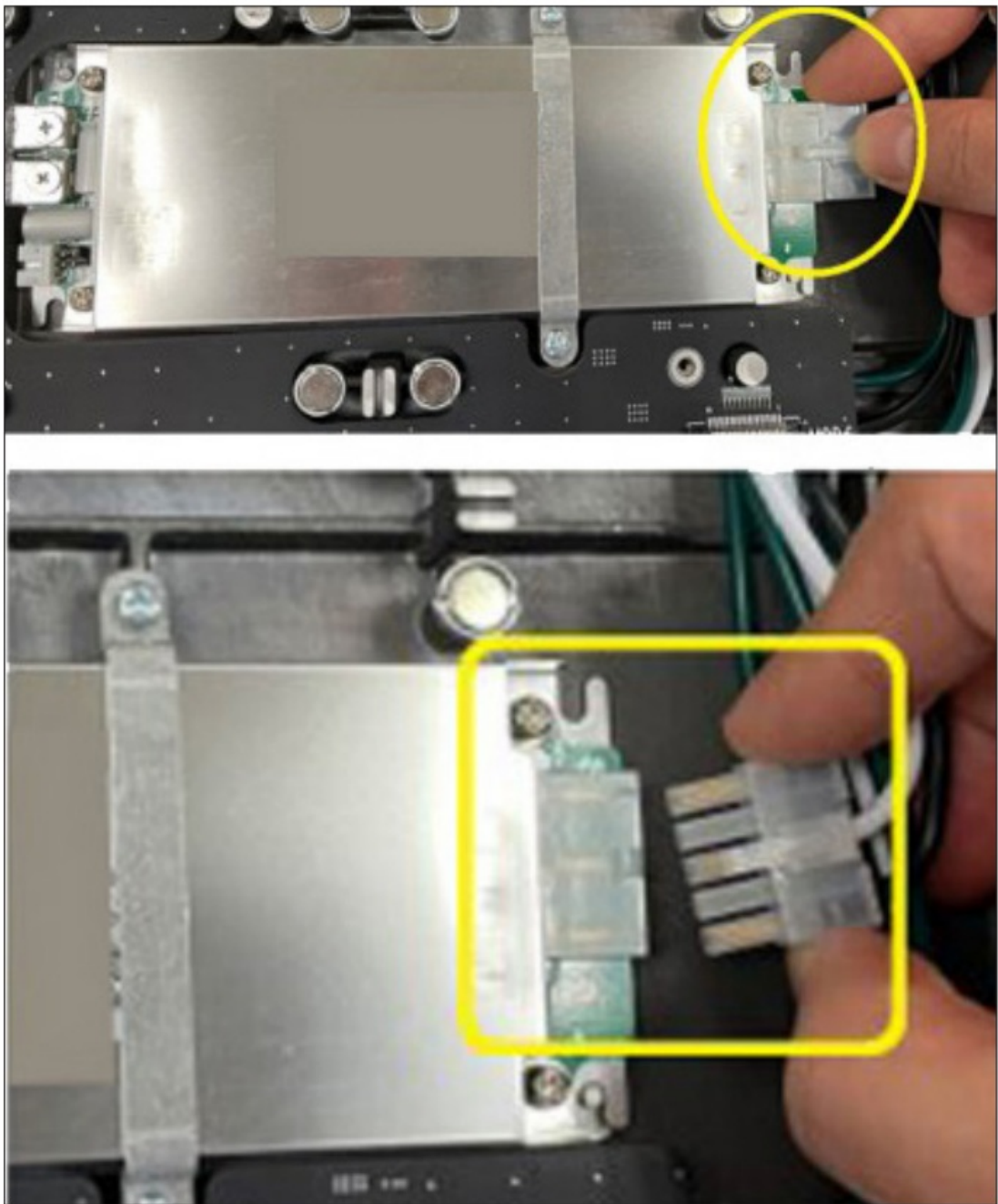


Figure 8: Remove the AC Power Connector

3. Remove the two screws that secure the mounting bracket to the power supply position. Refer to Figure 9.

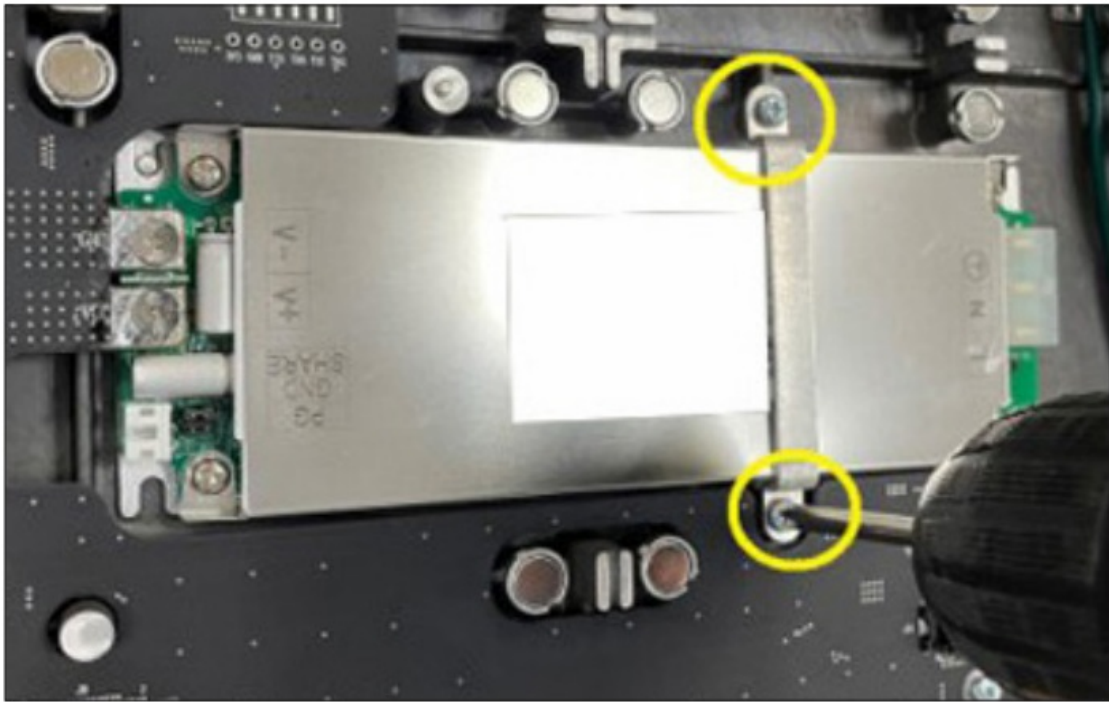


Figure 9: Remove Screws of the Bracket

4. Remove the two screws that secure the DC power connection to the hub board. Refer to Figure 10.

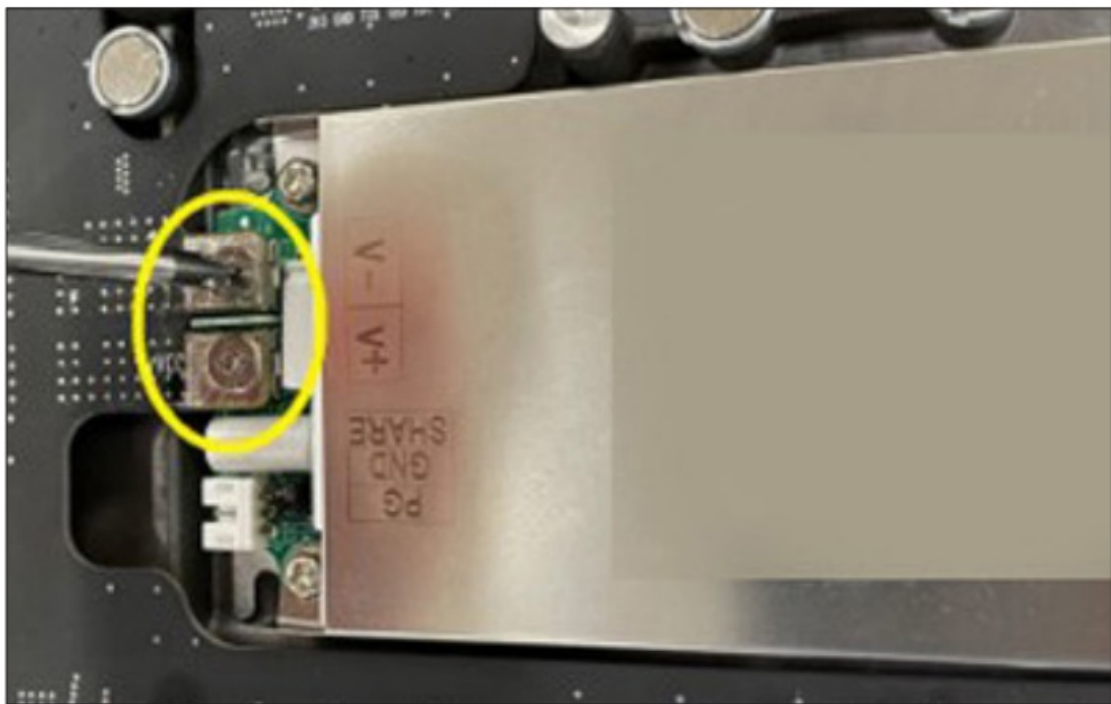


Figure 10: Remove Screws of the DC Power Connection

5. Push the power supply up from the right side. Disengage the hook from the pin on the left side to release the power supply fully. Then, remove the power supply. Refer to Figure 11.

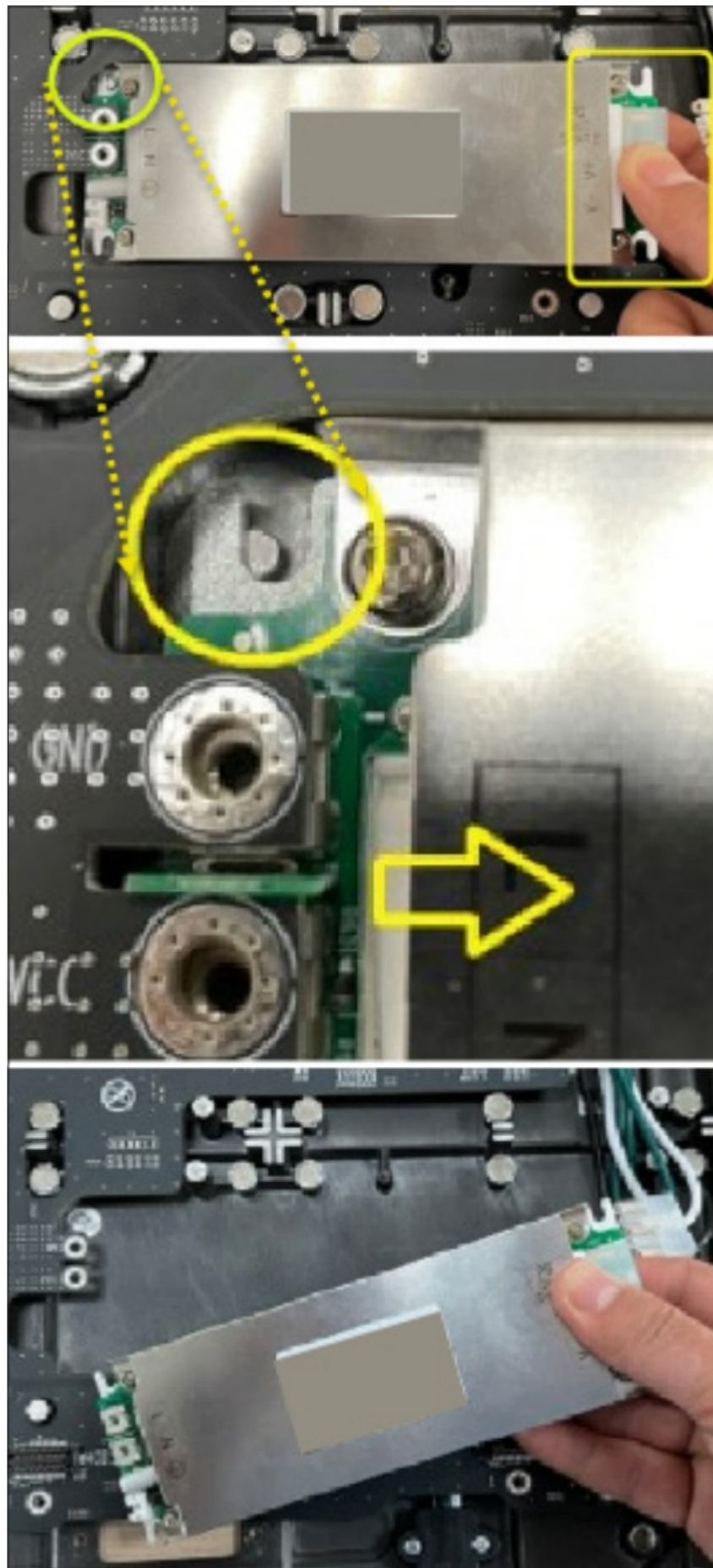


Figure 11: Remove Power Supply

Module Lanyard Installation (Optional)

1. Disconnect power to the display.
2. Remove the modules from the package. The lanyard is already fixed to the module's backside. Refer to Figure 12.

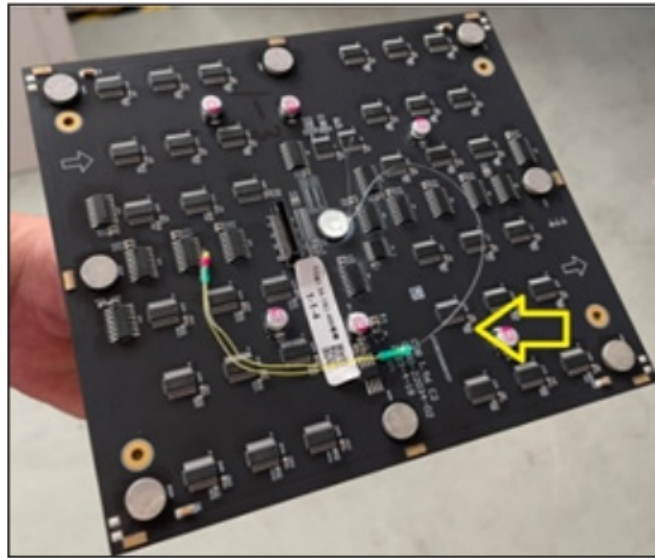


Figure 12: Module Lanyard

3. Take the end of the lanyard and make a ring. Refer to Figure 13.

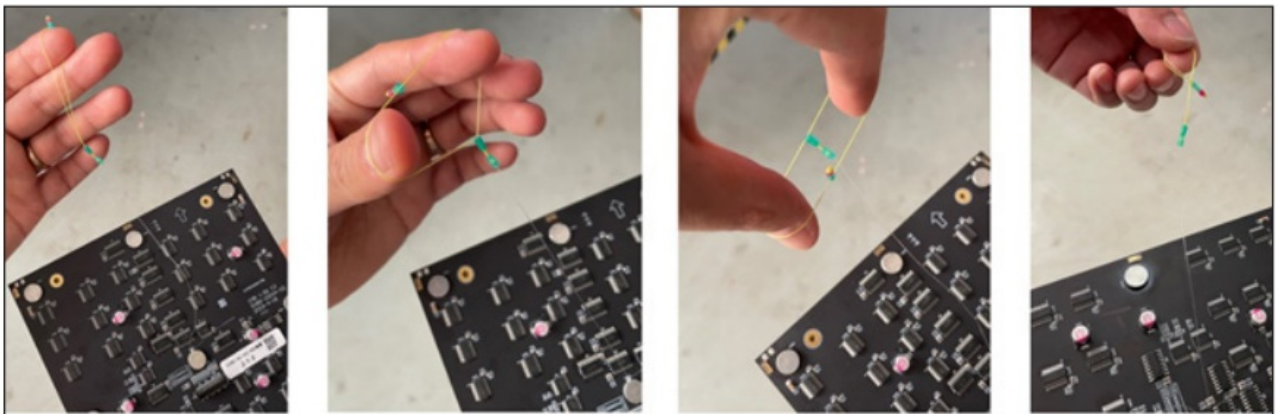


Figure 13: Make a Ring

4. Install the lanyard on the cabinet. Refer to Figure 14.

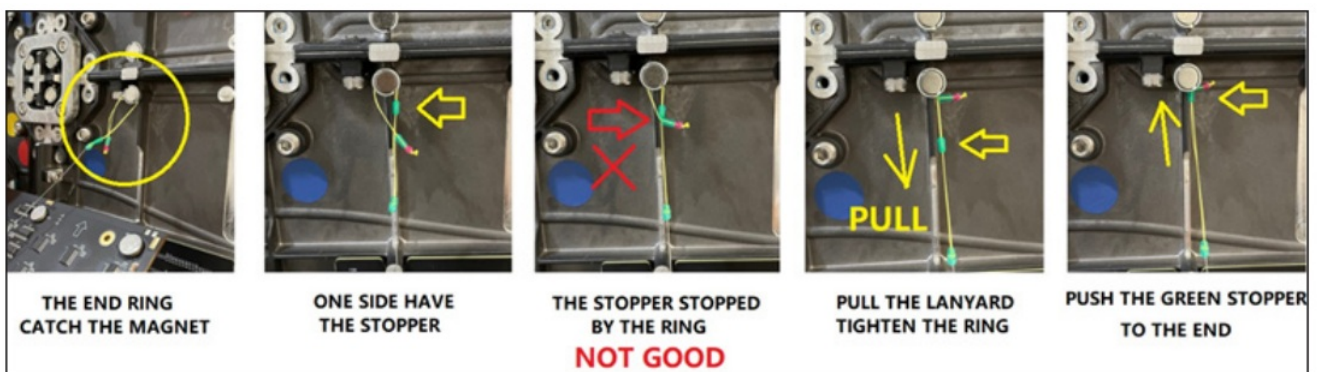


Figure 14: Install the Lanyard

5. For details on module installation and removal, refer to the NPN-4600 Series Speed Frame Substructure and Panel Installation Quick Guide(DD5444737) or NPN-4600 Series Vertical Tube Substructure and Panel Installation Quick Guide (DD5544738).

Contact

- 201 Daktronics Drive
- Brookings, SD 57006-5128
- www.daktronics.com/support
- 800.325.8766

FAQ

- **Q: How do I ensure proper installation of a receiver card?**
 - A: Make sure to firmly press the receiver card into the hub board and ensure that all jacks are fully seated.
- **Q: What should I do before module installation?**
 - A: Complete all power and signal connections before installing any modules.

Documents / Resources



[DAKTRONICS NPN-4600 Series Remove Removal Tool from the Module](#) [pdf] User Guide
NPN-4600, NPN-4600 Series Remove Removal Tool from the Module, Remove Removal Tool from the Module, Removal Tool from the Module, Tool from the Module

References

- [User Manual](#)

Manuals+. Privacy Policy

This website is an independent publication and is neither affiliated with nor endorsed by any of the trademark owners. The "Bluetooth®" word mark and logos are registered trademarks owned by Bluetooth SIG, Inc. The "Wi-Fi®" word mark and logos are registered trademarks owned by the Wi-Fi Alliance. Any use of these marks on this website does not imply any affiliation with or endorsement.