



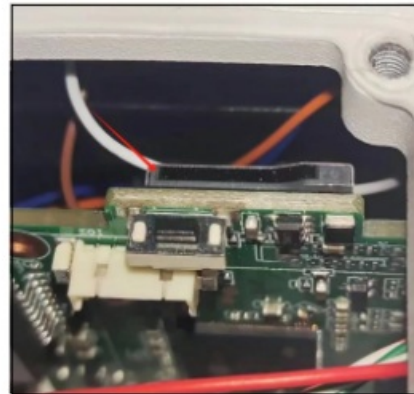
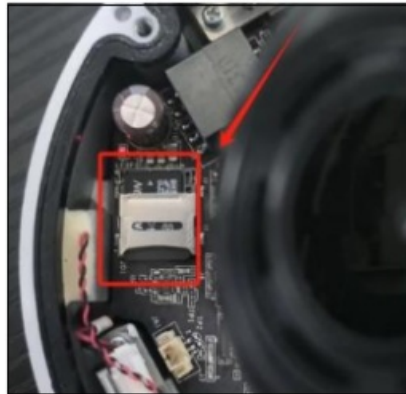
## DAHUA NVR Installation Hard Disk and Recording Settings Instructions

[Home](#) » [Dahua](#) » DAHUA NVR Installation Hard Disk and Recording Settings Instructions 



### DAHUA NVR installation hard disk and recording settings

1. Installing the sd card into the camera.



2. Log in to the camera web page.click"Setting – Storage – Destination -Local".  
Select sd card and click Format.



3. open the overwrite, When the hard disk recording is full, the system will automatically overwrite the oldest

video.


Select record mode. Tick “Auto” at the main stream and sub-stream.



## Contents

- 1 Documents / Resources
- 1.1 References

## Documents / Resources

	<a href="#">DAHUA NVR Installation Hard Disk and Recording Settings</a> [pdf] Instructions NVR Installation Hard Disk and Recording Settings, Installation Hard Disk and Recording Settings, Hard Disk and Recording Settings, Disk and Recording Settings, Recording Settings, Settings
---	--

## References

- [User Manual](#)

Manuals+. Privacy Policy

This website is an independent publication and is neither affiliated with nor endorsed by any of the trademark owners. The "Bluetooth®" word mark and logos are registered trademarks owned by Bluetooth SIG, Inc. The "Wi-Fi®" word mark and logos are registered trademarks owned by the Wi-Fi Alliance. Any use of these marks on this website does not imply any affiliation with or endorsement.