



## DAHUA NVR Hard Disk and Recording Settings User Guide

[Home](#) » [Dahua](#) » DAHUA NVR Hard Disk and Recording Settings User Guide 

### Contents

- [1 DAHUA NVR Hard Disk and Recording Settings](#)
- [2 Product Information](#)
- [3 Product Usage Instructions](#)
- [4 INSTALLATION](#)
- [5 Documents / Resources](#)
  - [5.1 References](#)
- [6 Related Posts](#)



### DAHUA NVR Hard Disk and Recording Settings



## Product Information

### Specifications:

- **Product Name:** DAHUA NVR
- **Function:** Installation of hard disk and recording settings

## Product Usage Instructions

### Installation of Hard Disk

1. Open the NVR shell carefully.
2. Install the hard disk onto the NVR securely.
3. Restart the NVR to ensure the hard disk is recognized.

### Recording Settings

1. Log in to the NVR GUID interface.
2. Click on Main Menu, then navigate to STORAGE and select Disk Manager
3. Check if the hard disk is properly installed on the NVR.
4. Format the hard disk using the options available in Disk Manager.

### Setting Record Mode

1. Select record mode on the NVR interface.
2. Tick 'Auto' for both the mainstream and sub-stream to enable automatic recording.

### Overwrite Setting

1. Enable the overwrite function on the NVR.
2. When the hard disk recording is full, the system will automatically overwrite the oldest video files.

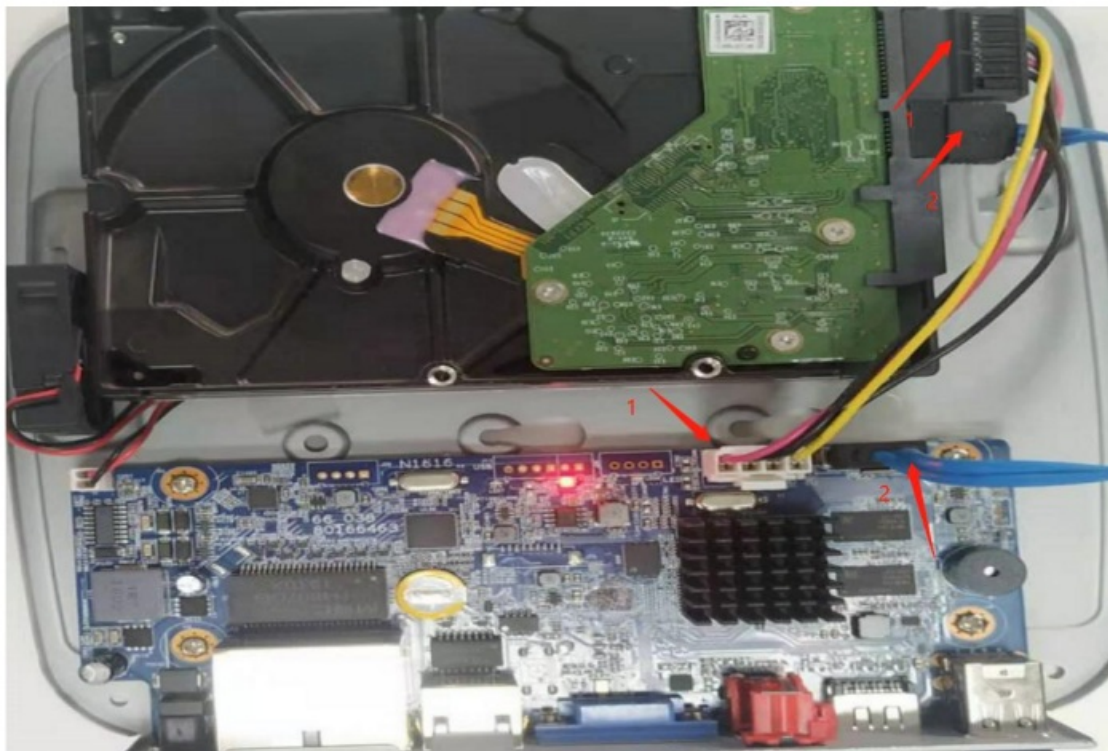
### FAQ

- **Q: What should I do if the hard disk is not recognized by the NVR?**
  - **A:** Ensure that the hard disk is properly installed and securely connected. Restart the NVR and check again in Disk Manager.
- **Q: Can I set specific recording schedules on the NVR?**
  - **A:** Yes, you can set up recording schedules in the NVR settings to suit your requirements.

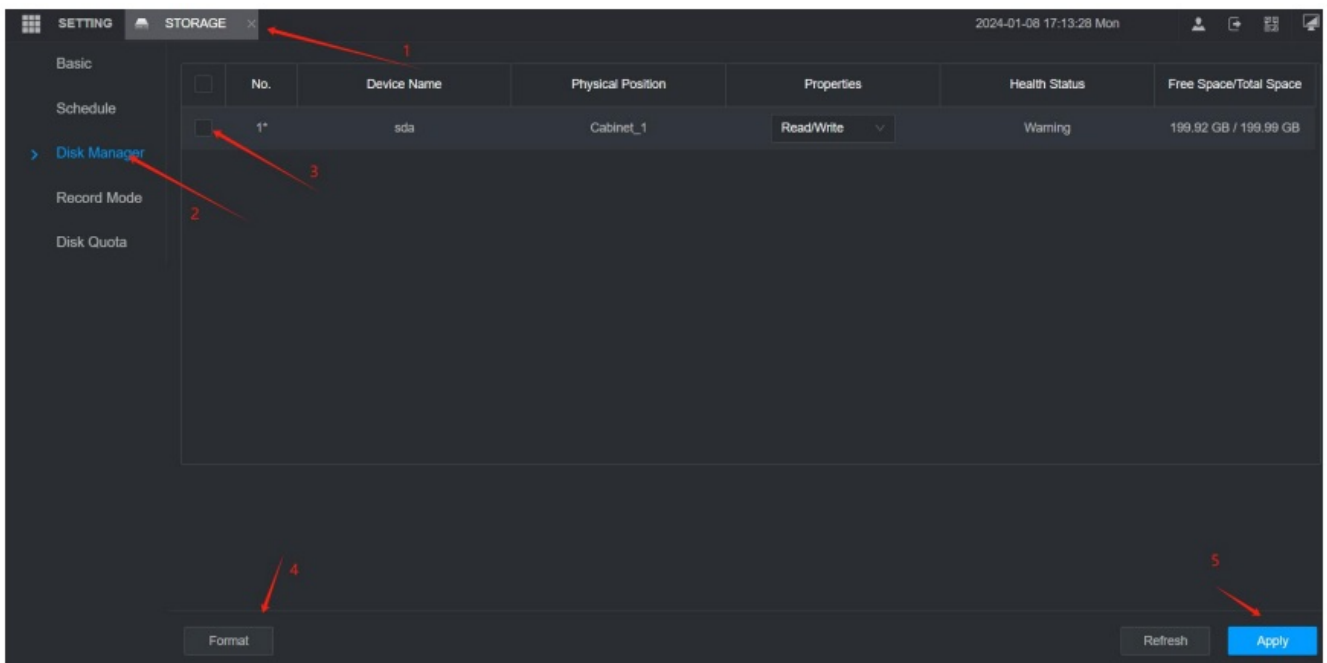
## INSTALLATION

### DAHUA NVR installation hard disk and recording settings

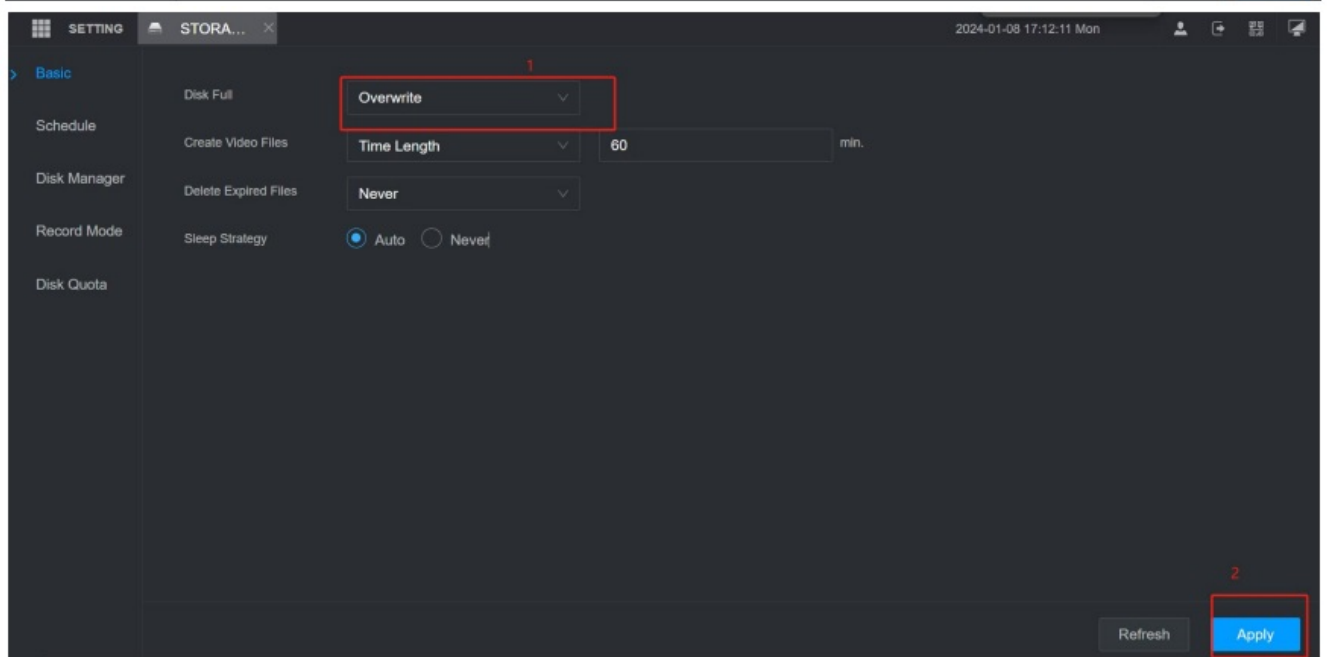
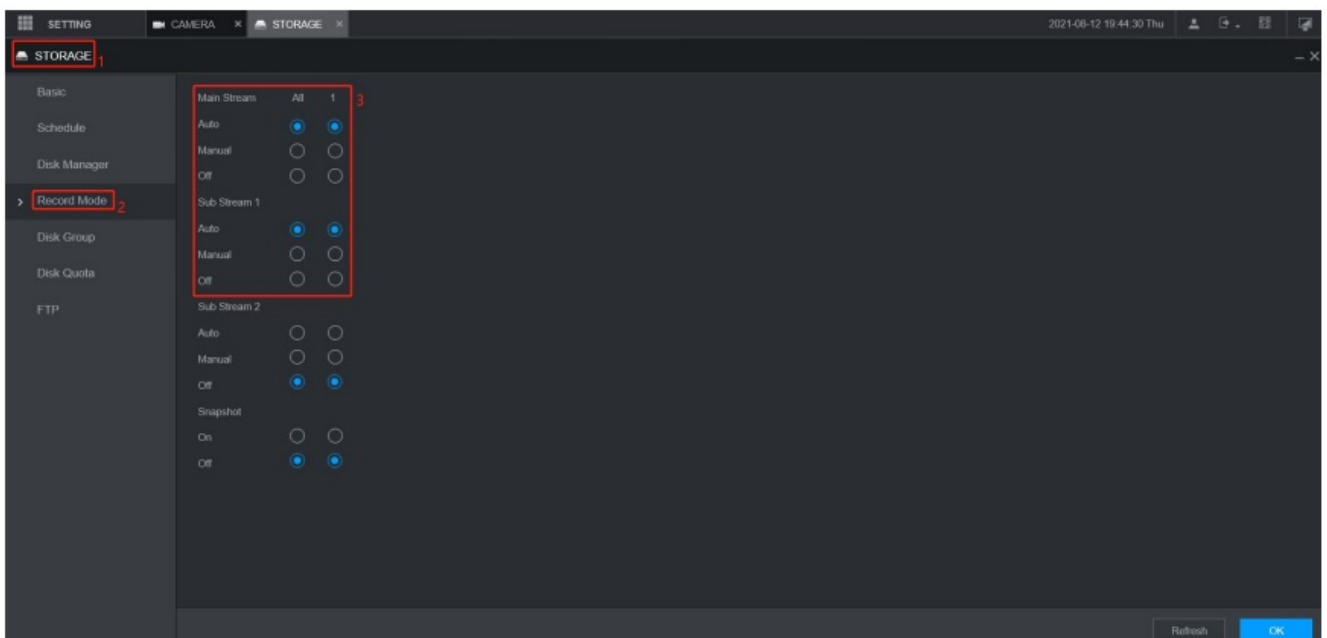
1. Open the NVR shell, install the hard disk on the NVR, and restart the NVR.



2. Log into the NVR GUID, click "Main menu-STORAGE-Disk Manager" to check whether the hard disk is installed on the NVR and format the hard disk.




3. Select record mode. Tick “Auto” at the mainstream and sub-stream.



4. open the overwrite, When the hard disk recording is full, the system will automatically overwrite the oldest video

Documents / Resources

	<p><a href="#">DAHUA NVR Hard Disk and Recording Settings</a> [pdf] User Guide</p> <p>NVR Hard Disk and Recording Settings, NVR, Hard Disk and Recording Settings, Disk and Recording Settings, Recording Settings, Settings</p>
---	--

References

- [User Manual](#)

Manuals+. [Privacy Policy](#)

This website is an independent publication and is neither affiliated with nor endorsed by any of the trademark owners. The "Bluetooth®" word mark and logos are registered trademarks owned by Bluetooth SIG, Inc. The "Wi-Fi®" word mark and logos are registered trademarks owned by the Wi-Fi Alliance. Any use of these marks on this website does not imply any affiliation with or endorsement.