

dahua IPC-HFW1430DT-STW Bullet Network Camera



dahua IPC-HFW1430DT-STW Bullet Network Camera User Guide

[Home](#) » [Dahua](#) » dahua IPC-HFW1430DT-STW Bullet Network Camera User Guide 

Contents

- 1 dahua IPC-HFW1430DT-STW Bullet Network Camera
- 2 Foreword
- 3 Important Safeguards and Warnings
- 4 Maintenance Requirements
- 5 Introduction
- 6 Network Configuration
- 7 Changing the Device IP Address
- 8 Operating with DMSS
- 9 Installation
 - 9.1 Installing the Camera
- 10 Documents / Resources
 - 10.1 References
- 11 Related Posts



dahua IPC-HFW1430DT-STW Bullet Network Camera



Foreword

General

- This manual introduces the functions, configuration, general operation, and system maintenance of network camera.

Safety Instructions

- The following signal words might appear in the manual.

Signal Words	Meaning
WARNING	Indicates a medium or low potential hazard which, if not avoided, could result in slight or moderate injury.
CAUTION	Indicates a potential risk which, if not avoided, could result in property damage, data loss, lower performance, or unpredictable result.
NOTE	Provides additional information as the emphasis and supplement to the text.

Revision History

Version	Revision Content	Release Date
V1.0.1	Updated the installation.	November 2022
V1.0.0	First release.	November 2021

Privacy Protection Notice

As the device user or data controller, you might collect the personal data of others such as their face, fingerprints, and license plate number. You need to be in compliance with your local privacy protection laws and regulations to protect the legitimate rights and interests of other people by implementing measures which include but are not limited: Providing clear and visible identification to inform people of the existence of the surveillance area and provide required contact information.

About the Manual

- The manual is for reference only. Slight differences might be found between the manual and the product.
- We are not liable for losses incurred due to operating of the product in ways that are not in compliance with the manual.
- The manual will be updated according to the latest laws and regulations of related jurisdictions. For detailed information, see the paper User Manual, use our CD-ROM, scan the QR code or visit our official website. The manual is for reference only. Slight differences might be found between the electronic version and the paper version.
- All the designs and software are subject to change without prior written notice. Product updates might result in some differences appearing between the actual product and the manual. Please contact customer service for the latest program and supplementary documentation.
- There might be deviations in the description of the technical data, functions and operations, or errors in the print. If there is any doubt or dispute, we reserve the right of final explanation.
- Upgrade the reader software or try other mainstream reader software if the manual (in PDF format) cannot be opened.
- All trademarks, registered trademarks and the company names in the manual are the properties of their respective owners.
- Please visit our website, contact the supplier or customer service if any problems occur while using the device.
- If there is any uncertainty or controversy, we reserve the right of final explanation.

Important Safeguards and Warnings

This section introduces content covering the proper handling of the device, hazard prevention, and prevention of property damage. Read carefully before using the device, comply with the guidelines when using it.

Transportation Requirements

- Transport the device under allowed humidity and temperature conditions.
- Pack the device with packaging provided by its manufacturer or packaging of the same quality before transporting it.
- Do not place heavy stress on the device, violently vibrate or immerse it in liquid during transportation.

Storage Requirements


- Store the device under allowed humidity and temperature conditions.
- Do not place the device in a humid, dusty, extremely hot or cold site that has strong electromagnetic radiation or unstable illumination.
- Do not place heavy stress on the device, violently vibrate or immerse it in liquid during storage.

Installation Requirements

WARNING

- Strictly comply with the local electrical safety code and standards, and check whether the power supply is

correct before operating the device.

- Please follow the electrical requirements to power the device.
 - When selecting the power adapter, the power supply must conform to the requirements of ES1 in IEC 62368-1 standard and be no higher than PS2. Please note that the power supply requirements are subject to the device label.
 - We recommend using the power adapter provided with the device.
- Do not connect the device to two or more kinds of power supplies, unless otherwise specified, to avoid damage to the device.
- The device must be installed in a location that only professionals can access, to avoid the risk of non-professionals becoming injured from accessing the area while the device is working. Professionals must have full knowledge of the safeguards and warnings of using the device.
- Do not place heavy stress on the device, violently vibrate or immerse it in liquid during installation.
- An emergency disconnect device must be installed during installation and wiring at a readily accessible location for emergency power cut-off.
- We recommend you use the device with a lightning protection device for stronger protection against lightning. For outdoor scenarios, strictly comply with the lightning protection regulations.
- Ground the function earthing portion  of the device to improve its reliability (certain models are not equipped with earthing holes). The device is a class I electrical appliance. Make sure that the power supply of the device is connected to a power socket with protective earthing.
- The dome cover is an optical component. Do not directly touch or wipe the surface of the cover during installation.

Operation Requirements

WARNING

- The cover must not be opened while the device is powered on.
- Do not touch the heat dissipation component of the device to avoid the risk of getting burnt.
- Use the device under allowed humidity and temperature conditions.
- Do not aim the device at strong light sources (such as lamplight, and sunlight) when focusing it, to avoid reducing the lifespan of the CMOS sensor, and causing overbrightness and flickering.
- When using a laser beam device, avoid exposing the device surface to laser beam radiation.
- Prevent liquid from flowing into the device to avoid damage to its internal components.
- Protect indoor devices from rain and dampness to avoid electric shocks and fires breaking out.
- Do not block the ventilation opening near the device to avoid heat accumulation.
- Protect the line cord and wires from being walked on or squeezed particularly at plugs, power sockets, and the point where they exit from the device.
- Do not directly touch the photosensitive CMOS. Use an air blower to clean the dust or dirt on the lens.
- The dome cover is an optical component. Do not directly touch or wipe the surface of the cover when using it.
- There might be a risk of electrostatic discharge on the dome cover. Power off the device when installing the cover after the camera finishes adjustment. Do not directly touch the cover and make sure the cover is not exposed to other equipment or human bodies
- Strengthen the protection of the network, device data and personal information. All necessary safety measures

to ensure the network security of the device must be taken, such as using strong passwords, regularly changing your password, updating firmware to the latest version, and isolating computer networks. For the IPC firmware of some previous versions, the ONVIF password will not be automatically synchronized after the main password of the system has been changed. You need to update the firmware or change the password manually.

Maintenance Requirements

- Strictly follow the instructions to disassemble the device. Non-professionals dismantling the device can result in it leaking water or producing poor-quality images. For a device that is required to be disassembled before use, make sure the seal ring is flat and in the seal groove when putting the cover back on. When you find condensed water forming on the lens or the desiccant becomes green after you disassemble the device, contact after-sales service to replace the desiccant. Desiccants might not be provided depending on the actual model.
- Use the accessories suggested by the manufacturer. Installation and maintenance must be performed by qualified professionals.
- Do not directly touch the photosensitive CMOS. Use an air blower to clean the dust or dirt on the lens. When it is necessary to clean the device, slightly wet a soft cloth with alcohol, and gently wipe away the dirt.
- Clean the device body with a soft dry cloth. If there are any stubborn stains, clean them away with a soft cloth dipped in a neutral detergent, and then wipe the surface dry. Do not use volatile solvents such as ethyl alcohol, benzene, diluent, or abrasive detergents on the device to avoid damaging the coating and degrading the performance of the device.
- The dome cover is an optical component. When it is contaminated with dust, grease, or fingerprints, use degreasing cotton moistened with a little ether or a clean soft cloth dipped in water to gently wipe it clean. An air gun is useful for blowing dust away.
- It is normal for a camera made of stainless steel to develop rust on its surface after being used in a strong corrosive environment (such as the seaside, and chemical plants). Use an abrasive soft cloth moistened with a little acid solution (vinegar is recommended) to gently wipe it away. Afterwards, wipe it dry.

Introduction

Cable

- Waterproof all the cable joints with insulating tape and waterproof tape to avoid short circuit and water damage. For the detailed operation, see FAQ manual.

Figure 1-1 Cables

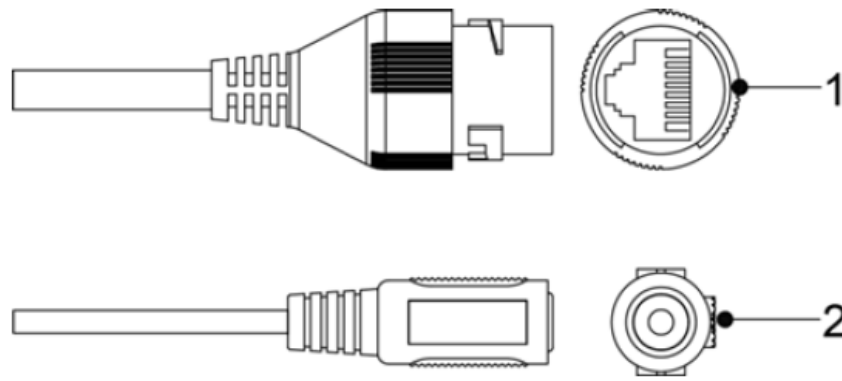




Table 1-1 Cable information

No.	Port Name	Description
1	Ethernet port	<ul style="list-style-type: none"> Connects to network with network cable. Provides power to the device with PoE.  <p>Do not connect both network cable and Wi-Fi at the same time.</p>
2	Power port	<p>Inputs 12 VDC power. Be sure to supply power as instructed in the manual.</p>  <p>Device abnormality or damage might occur if power is not supplied correctly.</p>

LED Status

LED Status	Device Status
Solid green	Working normally.
Fast flashing green	Connecting to Wi-Fi.
Slowly flashing green	Enabling device hotspot.
Solid red	<ul style="list-style-type: none"> Starting/Restarting. Resetting to factory default.

LED Status	Device Status
Slowly flashing red	Wi-Fi disconnected.
Flashing red and green	Updating firmware.

Network Configuration

Device initialization and IP settings can be finished with the ConfigTool or on the web page. For more information, see the web operation manual.

- Device initialization is available on select models, and it is required at first-time use and after the device is reset.
- Device initialization is available only when the IP addresses of the device (192.168.1.108 by default) and the PC stay on the same network segment.
- Plan usable network segments properly to connect the device to the network.
- The following figures are for reference only.

- Step 1 Search for the device that needs to be initialized through ConfigTool.
 1. Double-click ConfigTool.exe to open the tool.
 2. Click Modify IP.
 3. Select the searching way, and then click OK.
 4. Select one or several cameras in uninitialized status, and then click Initialize.
- Step 2 Select the devices to be initialized, and then click Initialize.

Figure 2-1 Password setting

- Step 3 Select Auto-check for updates as needed, and then click OK to initialize the device.If initialization failed, click to see more information.
- Step 4 Click Finish.

- You can change the IP address of one or more devices at a time. This section is based on changing IP addresses in batches.

- Changing IP addresses in batches is available only when the corresponding devices have the same login password.
- **Step 1** Search for the device whose IP address needs to be changed through ConfigTool.
 1. Double-click ConfigTool.exe to open the tool.
 2. Click Modify IP.
 3. Select the searching way, enter the username and password, and then click OK. The username is admin, and the password should be the one you set while initializing the device.
- **Step 2** Select the devices whose IP addresses need to be changed, and then click Modify IP.
- **Step 3** Configure IP address.
 - **Static mode:** When you select Static, you need to enter Start IP, Subnet Mask, and Gateway. The IP addresses of the devices will be modified successively starting from the first IP entered.
 - **DHCP mode:** If the DHCP server is available on the network, when you select DHCP, the IP address of devices will be automatically obtained through the DHCP server. The same IP address will be set for multiple devices if you select the Same IP checkbox.
- **Step 4** Click OK.

Logging in to the Webpage

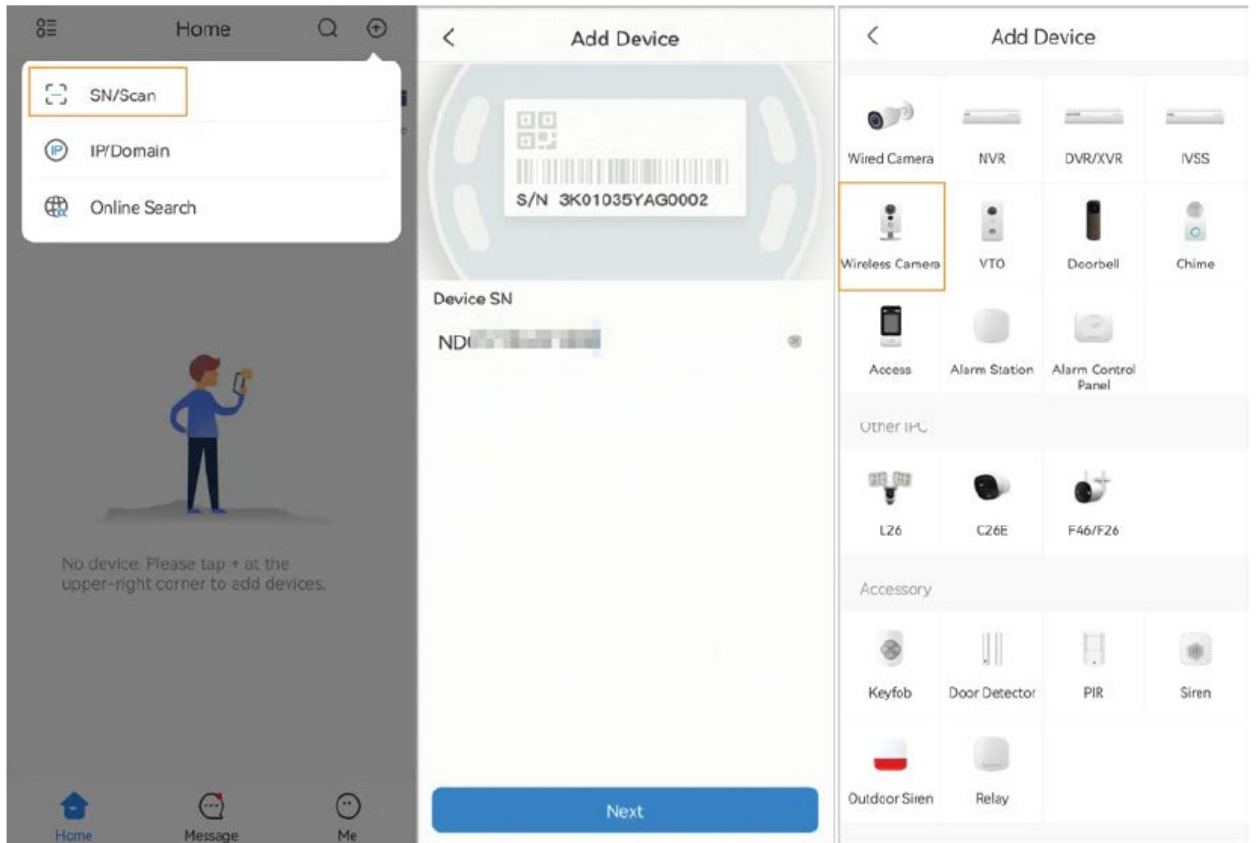
- **Step 1** Open the IE browser, enter the IP address of the device in the address bar, and then press the Enter key. If the setup wizard opens, follow the on-screen instructions to complete it.
- **Step 2** Enter the username and password in the login box, and then click Login.
- **Step 3** (Optional) For first-time login, click Click Here to Download Plugin, and then install the plugin as instructed. The home page opens when installation is complete.

Operating with DMSS

Make sure that there are no obstacles and electromagnetic interference between the device and the router for best possible wireless performance.

- **Step 1** Add the device.
 1. Tap + button on the upper-right corner of the DMSS home page to scan the QR code on the camera. If your DMSS fails to scan the QR code, tap Manually enter SN.
 2. Select Wireless Camera.

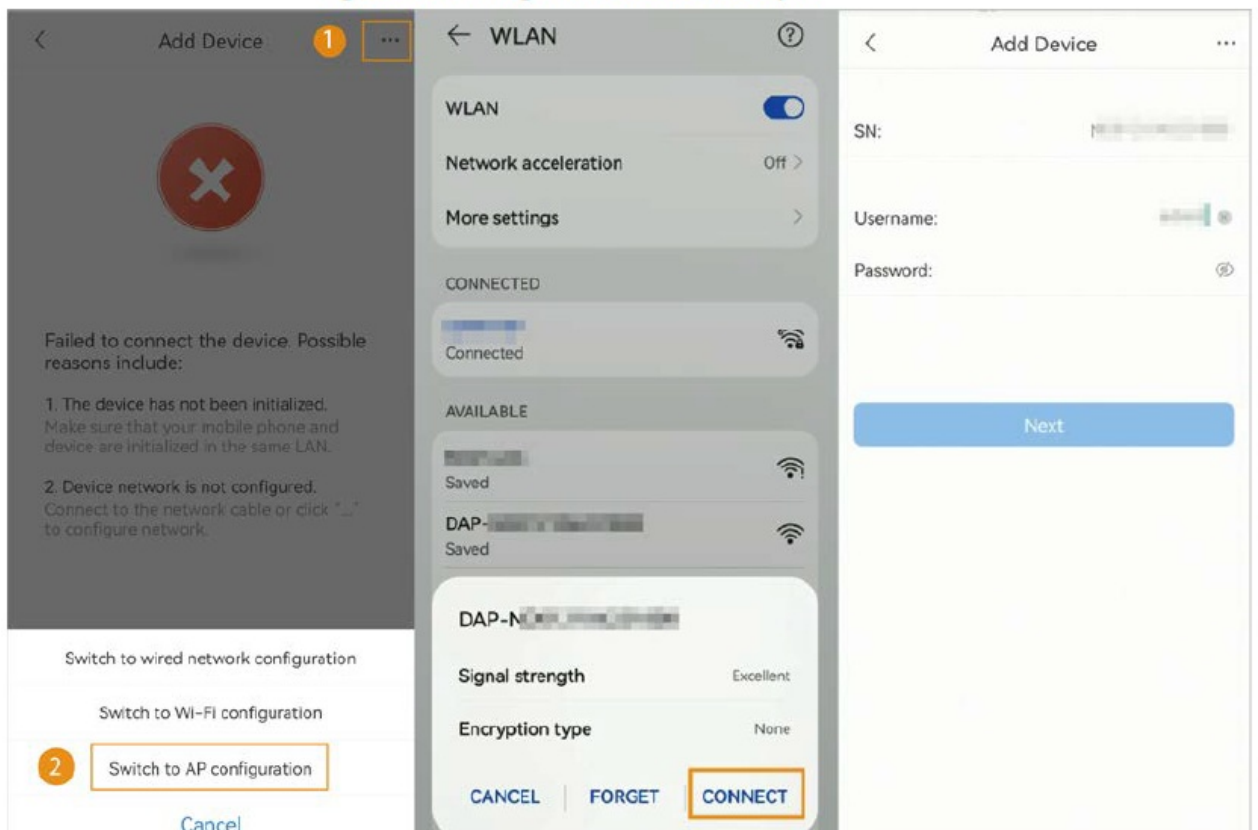
Figure 3-1 Add the device



Step 2 Configure the device hotspot.

- **Step 2** Configure the device hotspot. If you connect the device with an Ethernet cable, jump to Step 4 directly.
 - Click ... on the upper right corner, and then choose Switch to AP configuration.
 - Go to the Wi-Fi settings of your mobile phone, and connect hotspot named DAP-xxxxxxx.
 - Create the username and password for the device and then tap Next.

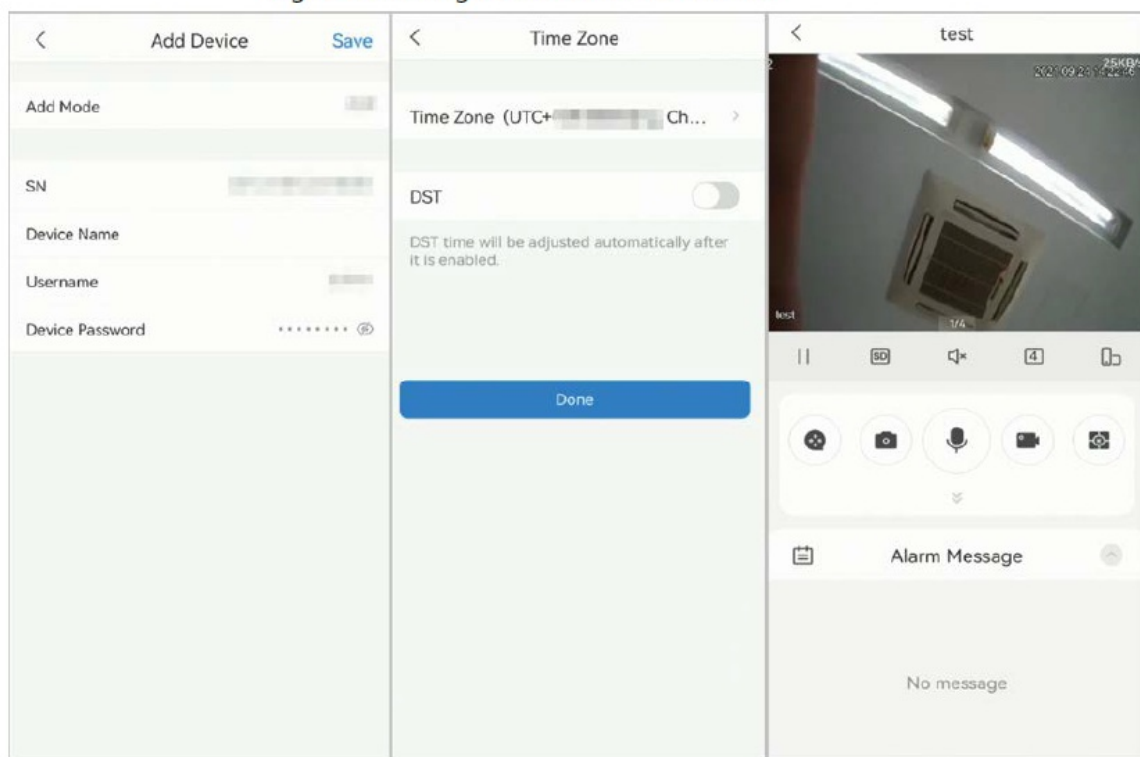
Figure 3-2 Configure the device hotspot



- **Step 3** Configure the Wi-Fi. Select your Wi-Fi network from the SSID list, and then enter the password.

- **Step 4** Configure the device information.
 1. Create the device name and password.
 2. Set the time zone, and then click Done.

Figure 3-3 Configure the device information

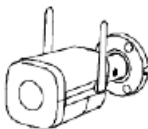




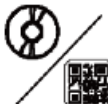



Installation

Packing List

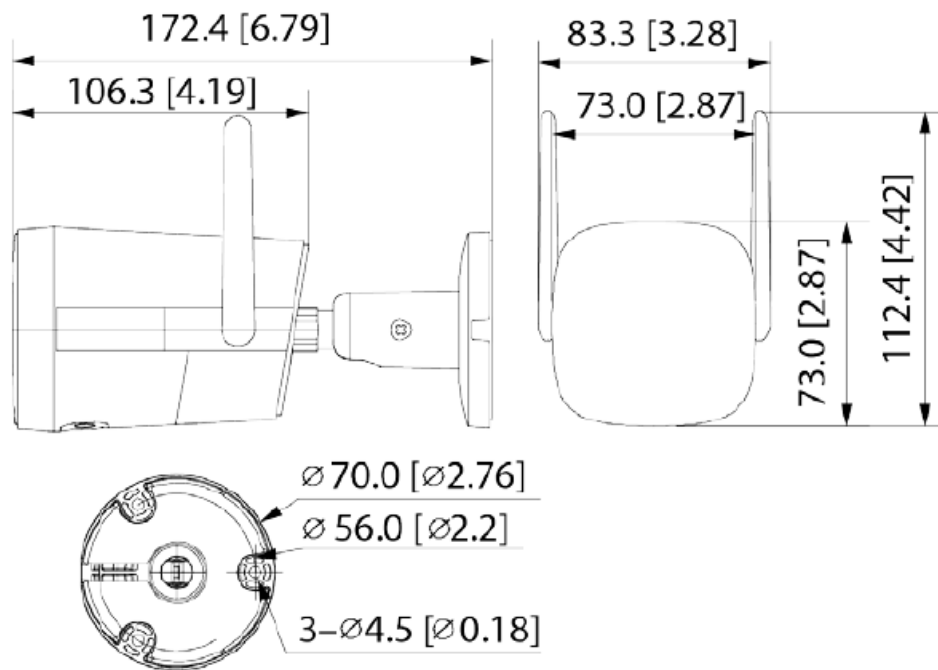
- The tool required for the installation such as an electric drill is not provided in the package.
- The operation manual and related tool information are contained in the disk or the QR code.

Figure 4-1 Packing list

Network Camera × 1	Manual × 2	Adapter × 1	Waterproof Connector × 1
			
Screw Package × 1	CD-ROM or QR code × 1	Positioning Map × 1	
			

Dimensions

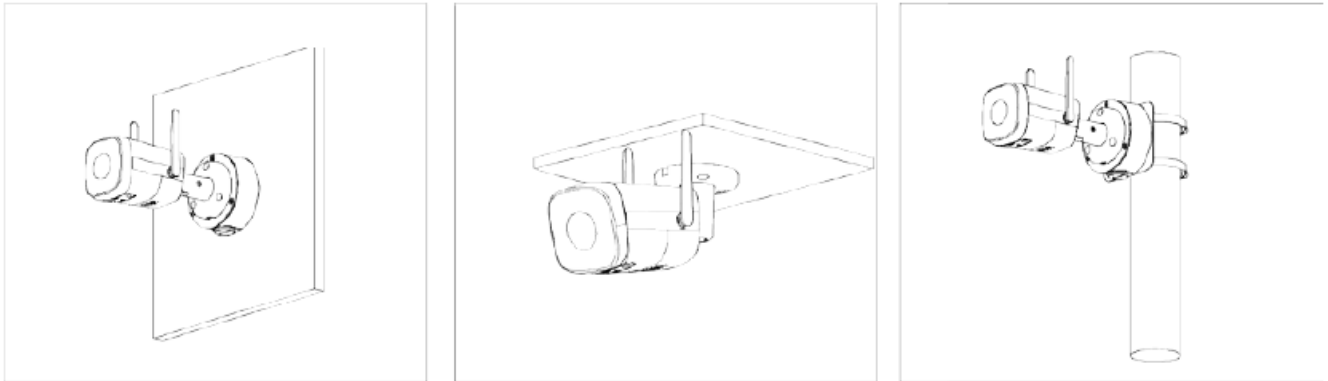
Figure 4-2 Dimensions (mm [inch])



Installing the Camera

Installation Methods

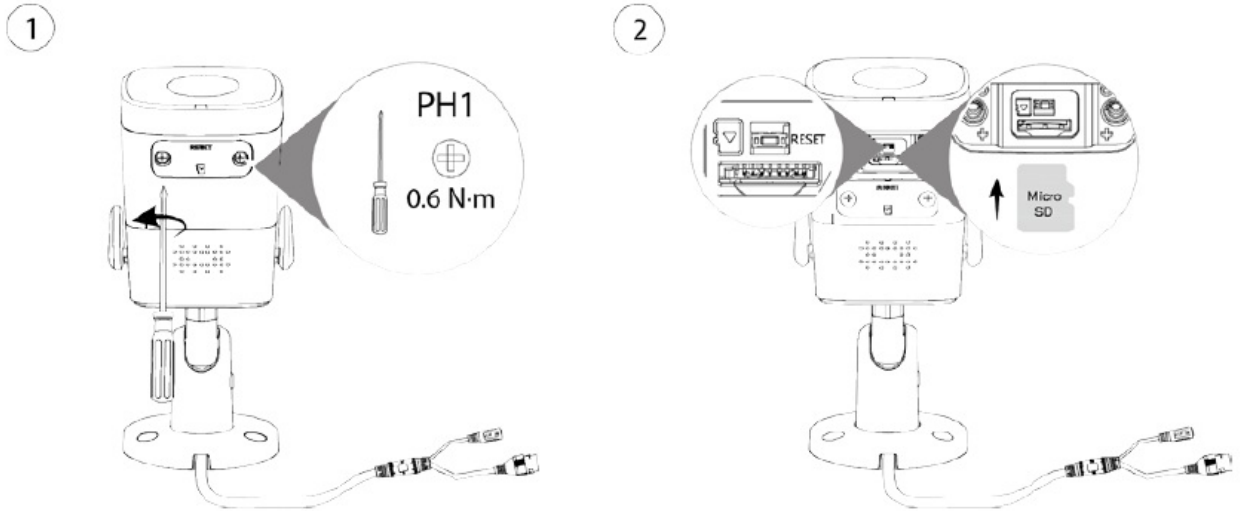
Figure 4-3 Installation methods



Installing the SD Card

- SD card slot is available on select models.
- Disconnect the power before installing or removing the SD card.
- Do not open the cover for a long time to avoid spraying in cameras.
 - Press the reset button for 10 seconds to reset the device.

Figure 4-4 Install the SD card



Attaching the Camera

- Make sure that the mounting surface is strong enough to hold at least three times the weight of the camera and bracket.

Figure 4-5 Cable going through the side cable tray

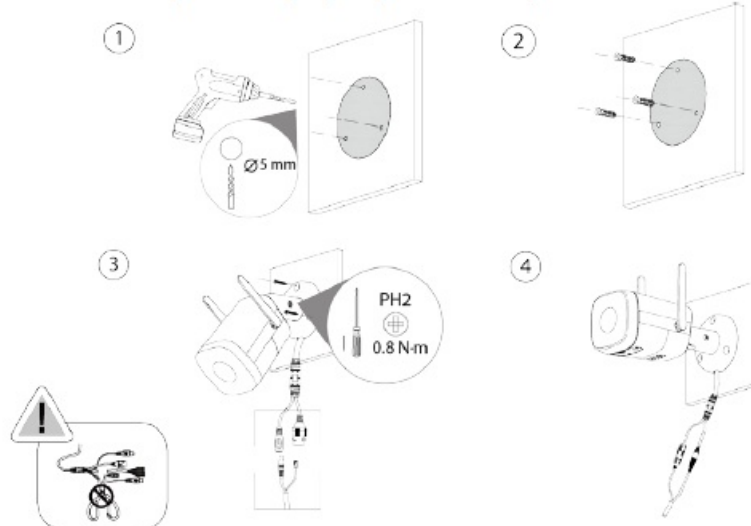
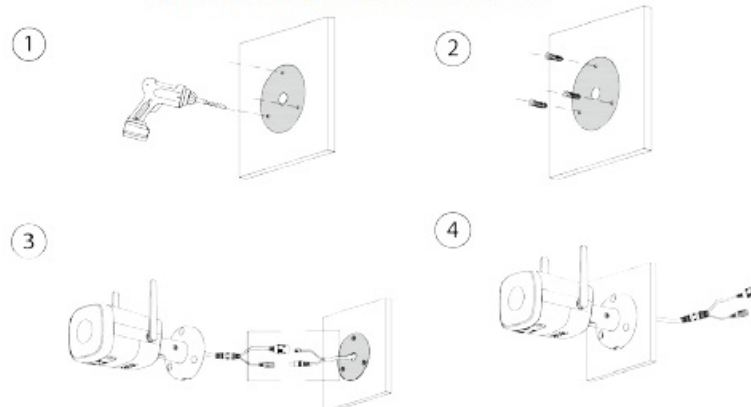


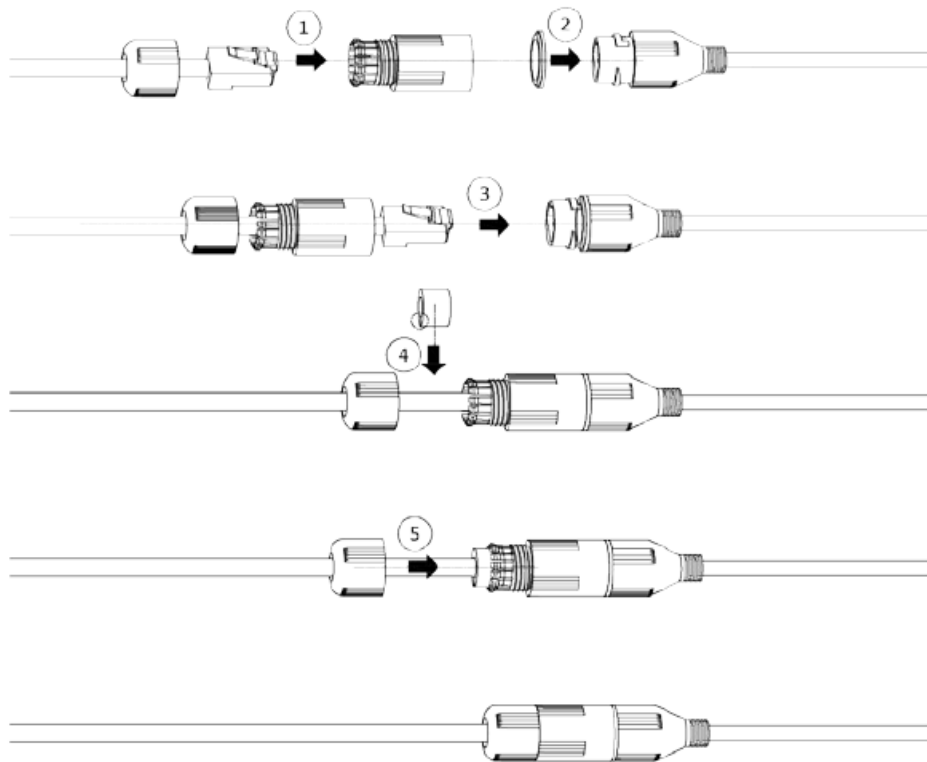
Figure 4-6 Cable going through the mounting surface



(Optional) Installing the Waterproof Connector

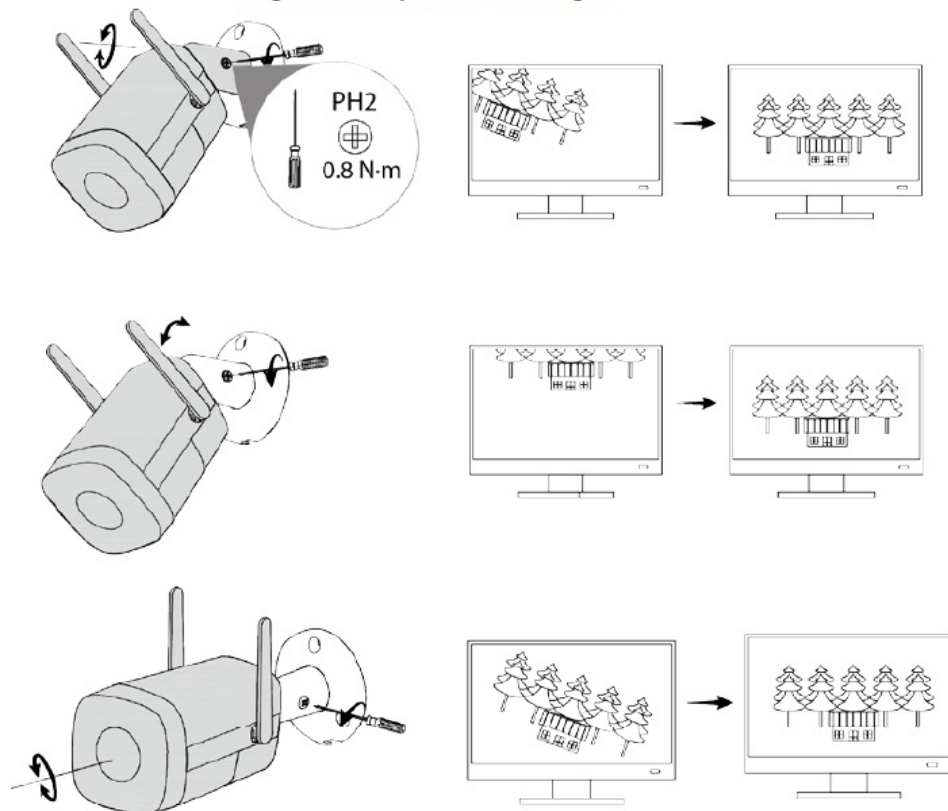
- This part is needed only when a waterproof connector comes with the camera and the camera is used outdoors.

Figure 4-7 Install the waterproof connector



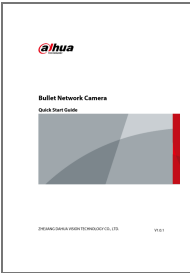
Adjusting the Lens Angle

Figure 4-8 Adjust the lens angle



- **Address:** No. 1399, Binxing Road, Binjiang District, Hangzhou, P. R. China
- **Website:** www.dahuasecurity.com
- **Postcode:** 310053
- **Email:** dhoverseas@dhvisiontech.com
- **Tel:** +86-571-87688888 28933188

Documents / Resources

	dahua IPC-HFW1430DT-STW Bullet Network Camera [pdf] User Guide IPC-HFW1430DT-STW Bullet Network Camera, IPC-HFW1430DT-STW, Bullet Network Camera, Network Camera, Camera
---	---

References

- [User Manual](#)

Manuals+ Privacy Policy

This website is an independent publication and is neither affiliated with nor endorsed by any of the trademark owners. The "Bluetooth®" word mark and logos are registered trademarks owned by Bluetooth SIG, Inc. The "Wi-Fi®" word mark and logos are registered trademarks owned by the Wi-Fi Alliance. Any use of these marks on this website does not imply any affiliation with or endorsement.