



dahua DH-IPC-WFX2 Bullet Network Camera User Guide

[Home](#) » [Dahua](#) » dahua DH-IPC-WFX2 Bullet Network Camera User Guide 



Bullet Network Camera Quick Start Guide

ZHEJIANG DAHUA VISION TECHNOLOGY CO., LTD.

Contents

- [1 Foreword](#)
- [2 Important Safeguards and Warnings](#)
- [3 Introduction](#)
 - [3.1 Cable](#)
- [4 2 Network Configuration](#)
- [5 Initializing Device](#)
- [6 Changing Device IP Address](#)
- [7 Logging in to web Interface](#)
- [8 Operating with DMSS](#)
- [9 Installation](#)
 - [9.1 Packing List](#)
- [10 Dimensions](#)
- [11 Installing Camera](#)
- [12 Installing SD Card](#)
- [13 Documents / Resources](#)
- [14 Related Posts](#)




Foreword

General

This manual introduces the functions, configuration, general operation, and system maintenance of the network camera.

Safety Instructions

The following signal words might appear in the manual.

| Signal Words | Meaning |
|--|--|
|  WARNING | Indicates a medium or low potential hazard which, if not avoided, could result in slight or moderate injury. |
|  CAUTION | This indicates a potential risk which, if not avoided, could result in property damage, data loss, lower performance, or unpredictable result. |
|  NOTE | Provides additional information as the emphasis and supplement to the text. |

Revision History

| Version | Revision Content | Release Date |
|---------|------------------|--------------|
| V1.0.0 | First release. | Sep-21 |

Privacy Protection Notice

As the device user or data controller, you might collect the personal data of others such as their face, fingerprints, and license plate number. You need to be in compliance with your local privacy protection laws and regulations to protect the legitimate rights and interests of other people by implementing measures that include but are not limited: Providing clear and visible identification to inform people of the existence of the surveillance area and provide required contact information.

About the Manual

- The manual is for reference only. Slight differences might be found between the manual and the product.
- We are not liable for losses incurred due to operating of the product in ways that are not in compliance with the manual.
- The manual will be updated according to the latest laws and regulations of related jurisdictions. For detailed information, see the paper User Manual, use our CD-ROM, scan the QR code or visit our official website. The manual is for reference only. Slight differences might be found between the electronic version and the paper version.
- All the designs and software are subject to change without prior written notice. Product updates might result in some differences appearing between the actual product and the manual. Please contact customer service for the latest program and supplementary documentation.
- There might be deviations in the description of the technical data, functions, and operations, or errors in the print. If there is any doubt or dispute, we reserve the right of final explanation.

- Upgrade the reader software or try other mainstream reader software if the manual (in PDF format) cannot be opened.
- All trademarks, registered trademarks, and the company names in the manual are the properties of their respective owners.
- Please visit our website, contact the supplier or customer service if any problems occur while using the device.
- If there is any uncertainty or controversy, we reserve the right of final explanation.

Important Safeguards and Warnings

Electrical Safety

- All installation and operation shall conform to your local electrical safety codes.
- The power supply must conform to the requirements of ES1 in IEC 62368-1 standard and be no higher than PS2. Note that the power supply requirements are subject to the device label.
- Make sure that the power supply is correct before operating the device.
- A readily accessible disconnecting device shall be incorporated in the building installation wiring.
- Prevent the power cable from being trampled or pressed, especially the plug, power socket, and junction extruded from the device.

Environment

- Do not aim the device at strong light to focus, such as lamp light and sunlight; otherwise, it might cause over brightness or light marks, which are not device malfunctions, and affect the longevity of Complementary Metal-Oxide Semiconductor (CMOS).
- Do not place the device in a damp, dusty extremely hot, or cold environment, or locations with strong electromagnetic radiation or unstable lighting.
- Keep the device away from any liquid to avoid damage to the internal components.
- Keep the indoor device away from rain or dampness to avoid fire or lightning.
- Keep sound ventilation to avoid heat accumulation.
- Transport, use, and store the device within the range of allowed humidity and temperature.
- Heavy stress, violent vibration, or water splash are not allowed during transportation, storage, and installation.
- Pack the device with standard factory packaging or the equivalent material when transporting the device.
- Install the device in a location where only the professional staff with relevant knowledge of safety guards and warnings can access it. The accidental injury might happen to the non-professionals who enter the installation area when the device is operating normally.

Operation and Daily Maintenance

- Do not touch the heat dissipation component of the device to avoid scald.
- Carefully follow the instructions in the manual when disassembling operation about the device; otherwise, it might cause water leakage or poor image quality due to unprofessional operations. Make sure that the gasket ring is flat and properly installed in the groove before installing the cover. Contact after-sales service for desiccant replacement if there is condensed fog on the lens after unpacking or when the desiccant turns green (Not all models are included with the desiccant).

- We recommend using the device together with a lightning arrester to improve the lightning protection effect.
- We recommend grounding the device to enhance reliability.
- Do not touch the image sensor (CMOS) directly. Dust and dirt could be removed with air blower, or you can wipe the lens gently with a soft cloth that is moistened with alcohol.
- You can clean the device body with a soft dry cloth, and for stubborn stains, use the cloth with mild detergent. To avoid possible damage on device body coating which could cause performance decrease, do not use volatile solvent such as alcohol, benzene, diluent to clean the device body, nor can strong, abrasive detergent be used.
- Dome cover is an optical component. Do not touch or wipe the cover with your hands directly during installation or operation. For removing dust, grease, or fingerprints, wipe gently with moistened oil-free cotton with diethyl or moistened soft cloth. You can also remove dust with an air blower.



WARNING

- Strengthen the protection of network, device data, and personal information by adopting measures that include but not limited to using strong passwords, changing passwords regularly, upgrading the firmware to the latest version, and isolating the computer network. For some devices with old firmware versions, the ONVIF password will not be changed automatically along with changing the system password, and you need to upgrade the firmware or manually change the ONVIF password.
- Use standard components or accessories provided by the manufacturer and make sure that the device is installed and maintained by professional engineers.
- Do not expose the surface of the image sensor to laser beam radiation in an environment where a laser beam device is used.
- Do not provide two or more power supply sources for the device unless otherwise specified. A failure to follow this instruction might cause damage to the device.

Introduction

Cable



Waterproof all the cable joints with insulating tape and waterproof tape to avoid short circuit and water damage. For the detailed operation, see FAQ manual.

Figure 1-1 Cables

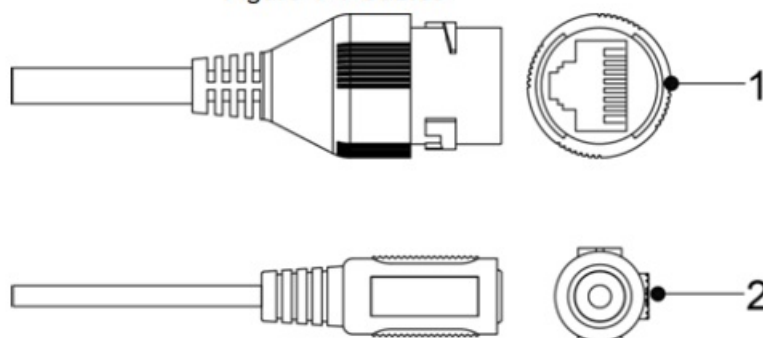




Table 1-1 Cable information

| No | Port Name | Description |
|----|---------------|--|
| 1 | Ethernet port | <ul style="list-style-type: none"> Connects to network with a network cable. Provides power to the device with PoE.  PoE is available on select models. |
| 2 | Power port | <p>Inputs 12 VDC power. Be sure to supply power as instructed in the manual.</p>  <p>Device abnormality or damage might occur if power is not supplied correctly.</p> |

2 Network Configuration

Device initialization and IP setting can be finished with the ConfigTool or on the web interface. For more information, see the web operation manual.



- Device initialization is available on select models, and it is required at first-time use and after the device is being reset.
- Device initialization is available only when the IP addresses of the device (192.168.1.108 by default) and the PC stay on the same network segment.
- Plan usable network segment properly to connect the device to the network.
- The following figures are for reference only.

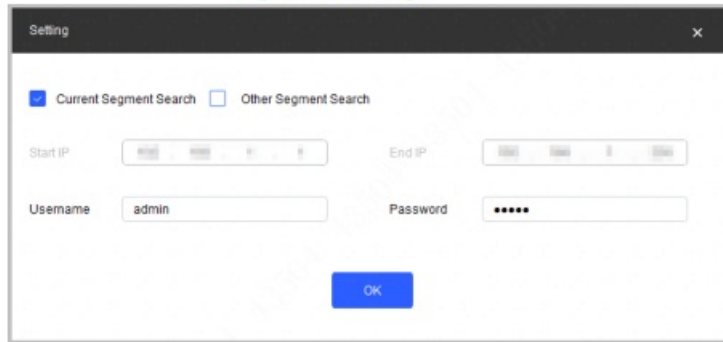
Initializing Device

Step 1 Double-click ConfigTool.exe to open the tool.

Step 2 Click.

Step 3 Click Search Setting.

Figure 2-1 Setting



Step 4 Select the searching way.

- Current Segment Search (default)
Select the Current Segment Search checkbox. Enter the username in the Username box and the password in the Password box. The system will search devices accordingly.
- Other Segment Search
Select the Other Segment Search checkbox. Enter IP address in the Start IP box and End IP box respectively. Enter user name and password. The system will search the devices accordingly.
- If you select the Current Segment Search checkbox and the Other Segment Search checkbox together, the system searches for devices under both conditions.
- Enter username and the password when you want to change IP, configure the system, update the device, restart the device, and more.

Step 5 Click OK.

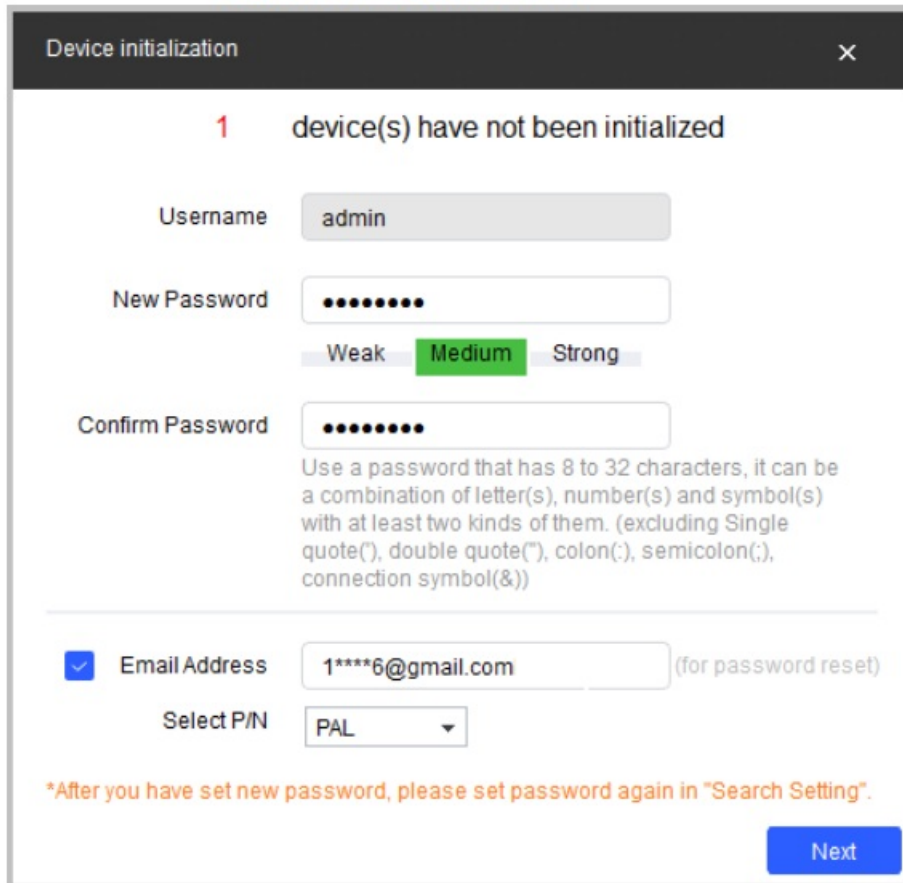
Step 6 Select one or several devices in uninitialized status and then click Initialize.

Step 7 Select the devices to be initialized and then click Initialize.



- If you do not provide the linked information for a password reset, you can reset the password only through an XML file.
- When initializing multiple devices, ConfigTool initializes all devices based on the password reset mode of the first selected device.

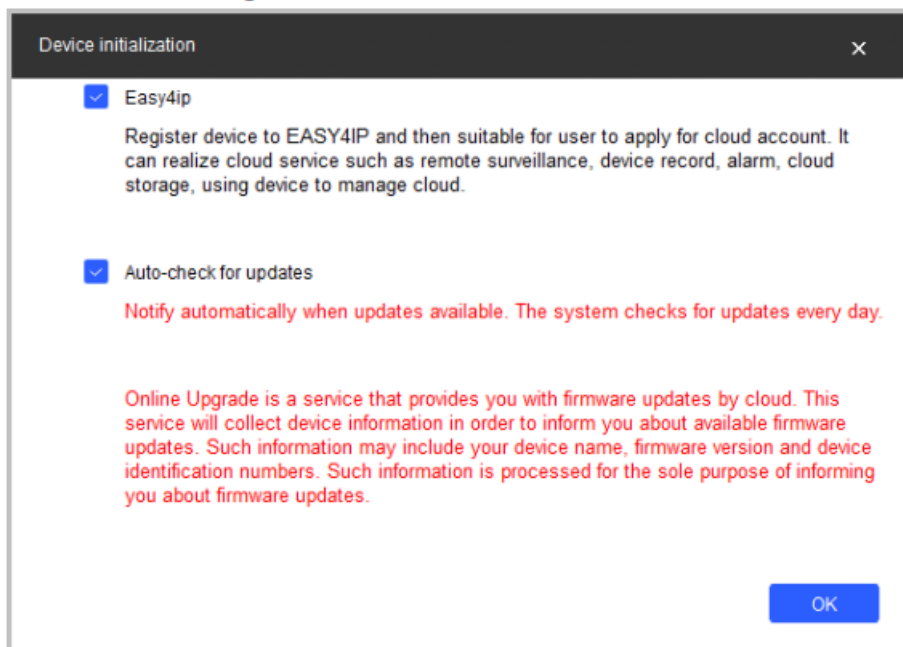
Figure 2-2 Password setting



The screenshot shows a 'Device initialization' window with a close button (X) in the top right corner. The main heading is '1 device(s) have not been initialized'. Below this, there are three input fields: 'Username' with the value 'admin', 'New Password' with masked characters '.....', and 'Confirm Password' with masked characters '.....'. Under the 'New Password' field, there are three radio buttons labeled 'Weak', 'Medium' (which is selected and highlighted in green), and 'Strong'. Below the password fields, there is a text box with the instruction: 'Use a password that has 8 to 32 characters, it can be a combination of letter(s), number(s) and symbol(s) with at least two kinds of them. (excluding Single quote('), double quote("), colon(:), semicolon(;), connection symbol(&))'. Below this, there is a checked checkbox for 'Email Address' with the value '1****6@gmail.com' and a note '(for password reset)'. Below the email address, there is a 'Select P/N' dropdown menu with 'PAL' selected. At the bottom, there is an orange text message: '*After you have set new password, please set password again in "Search Setting".' and a blue 'Next' button.

Step 8 Set and confirm the password of the devices, then enter a valid email address, and then click Next.



Figure 2-3 Device initialization



The screenshot shows a 'Device initialization' window with a close button (X) in the top right corner. There are two checked checkboxes: 'Easy4ip' and 'Auto-check for updates'. Below 'Easy4ip', there is a text description: 'Register device to EASY4IP and then suitable for user to apply for cloud account. It can realize cloud service such as remote surveillance, device record, alarm, cloud storage, using device to manage cloud.' Below 'Auto-check for updates', there is a text description: 'Notify automatically when updates available. The system checks for updates every day.' Below these, there is a red text message: 'Online Upgrade is a service that provides you with firmware updates by cloud. This service will collect device information in order to inform you about available firmware updates. Such information may include your device name, firmware version and device identification numbers. Such information is processed for the sole purpose of informing you about firmware updates.' At the bottom right, there is a blue 'OK' button.

Step 9 Select Easy4ip or select Auto-check for updates according to the actual needs. If neither, leave them unselected.

Step 10 Click OK to initialize the device.

Click the success icon () or the failure icon () for the details.

Step 11 Click Finish.

Changing Device IP Address

- You can change the IP address of one or multiple devices at one time. This section is based on changing IP addresses in batches.
- Changing IP addresses in batches is available only when the corresponding devices have the same login password.

Step 1 Do Step1 to Step5 in “2.1 Initializing Device” to search for devices in your network segment.



After clicking Search Setting, enter the username and password, and make sure that they are the same as what you set during initialization; otherwise, there will be a wrong password notice.

Step 2 Select the devices whose IP addresses need to be modified and then click Batch Modify IP.

Figure 2-4 Modify IP address

Modify IP Address

Mode ☒ Static ☐ DHCP

Start IP Same IP ☐

Subnet Mask

Gateway

Selected number of devices: 11 OK

Step 3 Select Static mode and then enter start IP, subnet mask, and gateway.



- IP addresses of multiple devices will be set to the same if you select the Same IP checkbox.
- If a DHCP server is available in the network, devices will automatically obtain IP addresses from DHCP server when you select DHCP.

Step 4 Click OK.

Logging in to web Interface

Step 1 Open IE browser, enter the IP address of the device in the address bar and then press Enter key. If the setup wizard is displayed, finish the settings as instructed.

Step 2 Enter the username and password in the login box and then click Login.

Step 3 For the first-time login, click Click Here to Download Plugin and then install the plugin as instructed. The main interface is displayed when the installation is finished.

Operating with DMSS

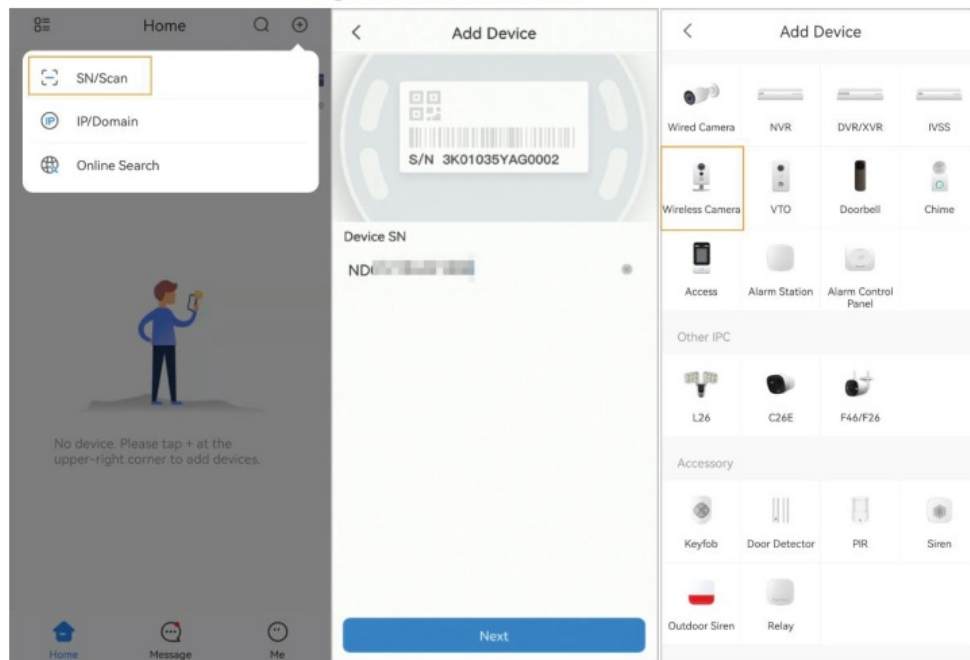


To ensure the best possible wireless performance, make sure that there are no obstacles and electromagnetic interference between the device and the router.

Step 1 Add the device.

1. Tap + button on the upper-right corner of the DMSS home page to scan the QR code on the camera. If your DMSS fails to scan the QR code, tap Manually enter SN.
2. Choose Wireless Camera.

Figure 3-1 Add the device



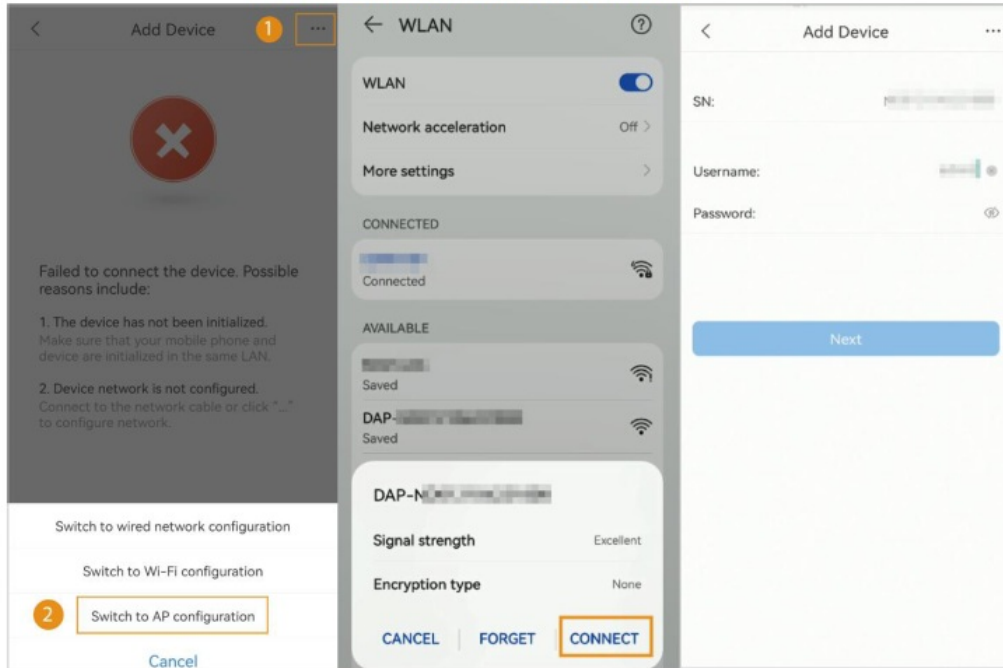
Step 2 Configure the device hotspot.



If you connect the device with an Ethernet cable, please jump to Step4 directly.

1. Click ... on the upper right corner and choose Switch to AP configuration.
2. Go to Wi-Fi settings of your mobile phone, connect hotspot named DAP-xxxxxxx.
3. Create the username and password for the device and then tap Next.

Figure 3-2 Configure the device hotspot



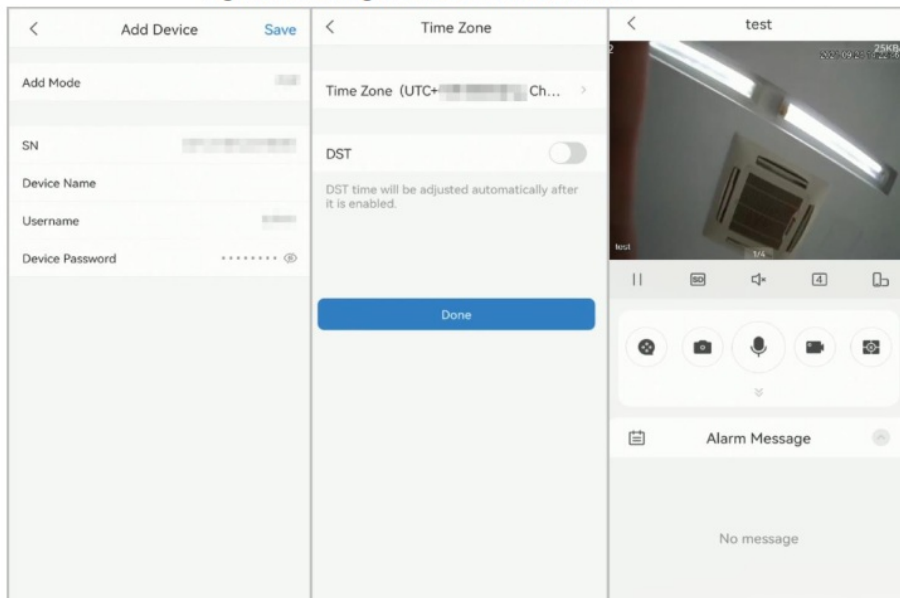
Step 3 Configure the Wi-Fi.

Select your Wi-Fi network from the SSID list and enter the password.

Step 4 Configure the device information.

1. Create the device name and password.
2. Set the time zone and click Done.

Figure 3-3 Configure the device information



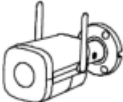






Installation

Packing List



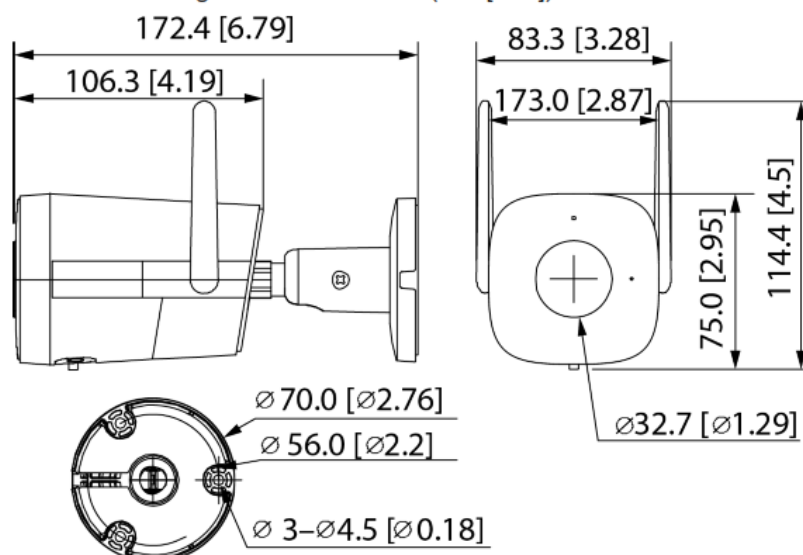
- The tool required for the installation such as an electric drill is not provided in the package.
- The operation manual and related tool information are contained in the disk or the QR code.

Figure 4-1 Packing list

| | | | |
|---|---|---|---|
| Network Camera × 1 | Manual × 2 | Adapter × 1 | Waterproof Connector × 1 |
|  |  |  |  |
| Screw Package × 1 | CD-ROM or QR code × 1 | Positioning Map × 1 | |
|  |  |  | |

Dimensions

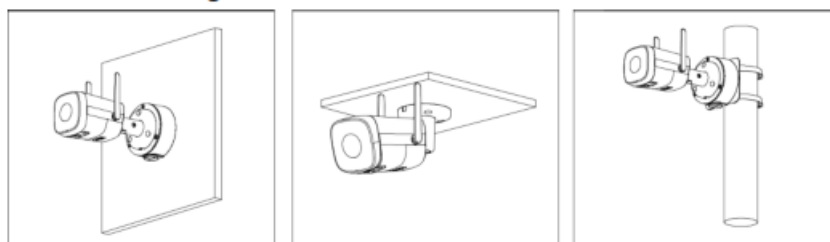
Figure 4-2 Dimensions (mm [inch])



Installing Camera

Installation Method

Figure 4-3 Installation method



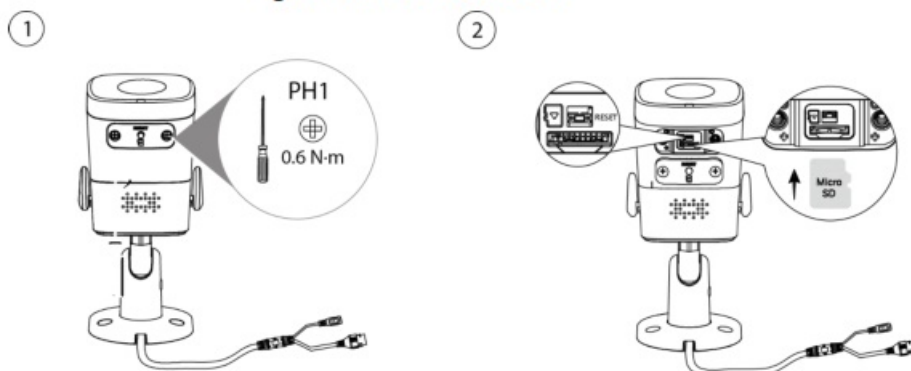
Installing SD Card

- SD card slot is available on select models.
- Disconnect the power before installing or removing the SD card.
- Do not open the cover for a long time to avoid spray in cameras.



Press the reset button for 10 seconds to reset the device.

Figure 4-4 Install SD card



Attaching Camera

- Make sure that the mounting surface is strong enough to hold at least three times the weight of the camera and bracket.
- Remove the protective film after finishing the installation.

Figure 4-5 Cable going through the side cable tray

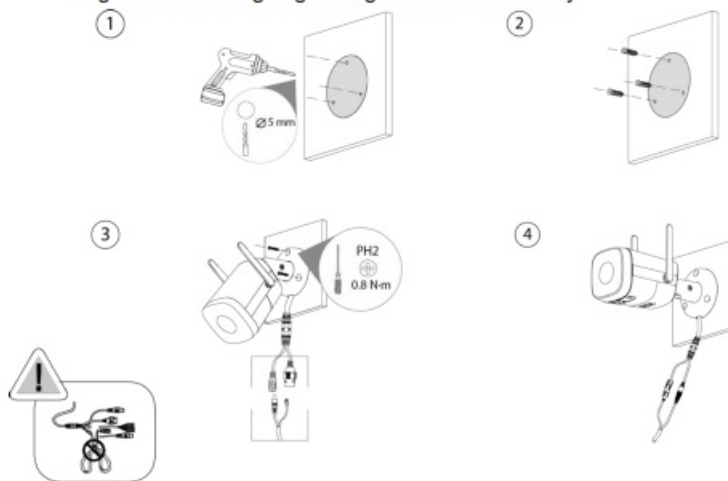
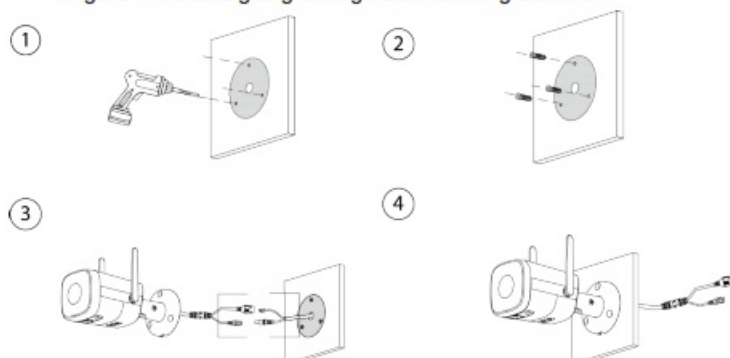


Figure 4-6 Cable going through the mounting surface

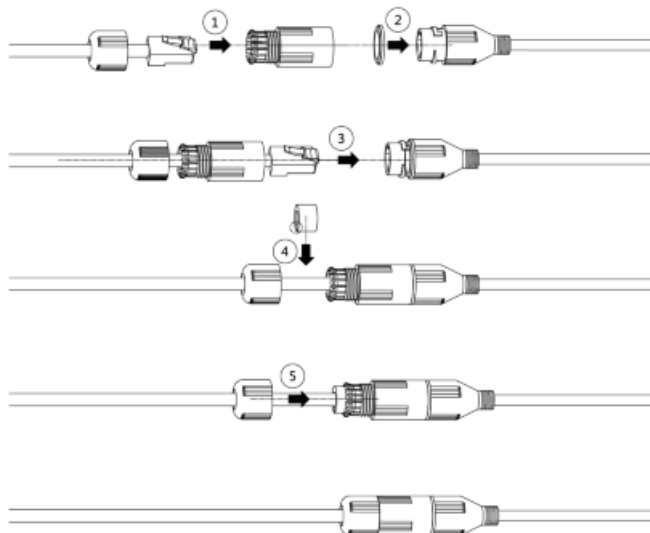


(Optional) Installing Waterproof Connector



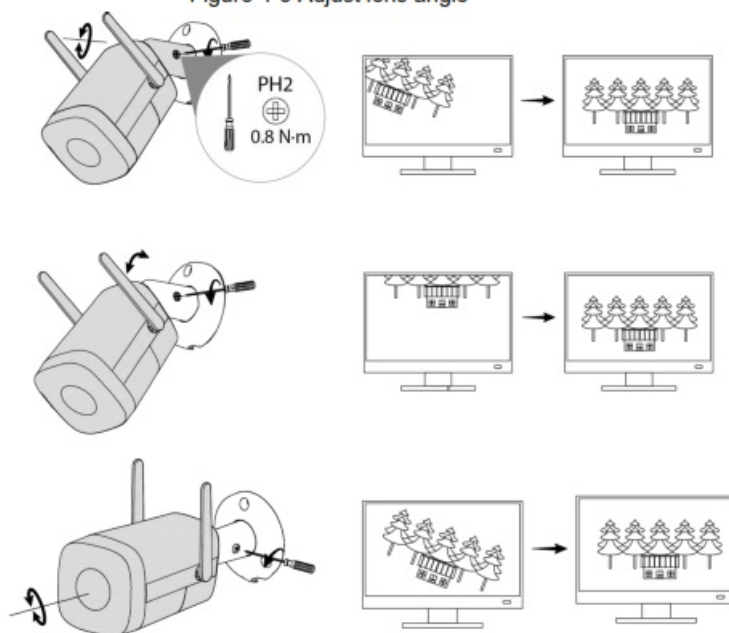
This part is needed only when a waterproof connector comes with the camera and the camera is used outdoors.

Figure 4-7 Install waterproof connector



Adjusting Lens Angle

Figure 4-8 Adjust lens angle



ENABLING A SAFER SOCIETY AND SMARTER LIVING

ZHEJIANG DAHLIA VISION TECHNOLOGY CO., LTD.

Address: No.1199 Bintan Road, IlInflang District, Hangzhou, P. R. China I


Website: www.dahuasecurity.com

Postcode: 310053

Email: overseas@dahuatech.com

Fax: +86-571-876888151

Tel: +86-571-87688883

| | |
|---|---|
|  <p>The image shows the cover of a 'Quick Start Guide' for a Dahua DH-IPC-WFX2 Bullet Network Camera. It features the Dahua logo at the top left, followed by the text 'Bullet Network Camera' and 'Quick Start Guide'. Below this is a stylized graphic of a camera lens or bullet shape in shades of gray and red. At the bottom, it says 'DAHUANG DAHUA VIDEO TECHNOLOGY CO., LTD.' and 'V1.0.0'.</p> | <p>dahua DH-IPC-WFX2 Bullet Network Camera [pdf] User Guide</p> <p>DH-IPC-WFX2, DHIPCWFX2, SVNDH-IPC-WFX2, SVNDHIPCWFX2, DH-IPC-WFX2 IP Camera, IP Camera, Camera, DH-IPC-WFX2 Bullet Network Camera, Bullet Network Camera, Network Camera</p> |
|---|---|