

**dahua**  
TECHNOLOGY  
**B1A21P Bullet  
Camera**



## Dahua B1A21P Bullet Camera User Guide

[Home](#) » [Dahua](#) » Dahua B1A21P Bullet Camera User Guide 

### Contents

- [1 Dahua B1A21P Bullet Camera](#)
- [2 Product Information](#)
- [3 Product Usage Instructions](#)
- [4 System Overview](#)
- [5 Functions](#)
- [6 Technical Specification](#)
- [7 Accessories](#)
- [8 Mounting](#)
- [9 Dimensions \(mm/inch\)](#)
- [10 Dahua Camera reset](#)
- [11 FAQ](#)
- [12 Documents / Resources](#)
  - [12.1 References](#)



### Dahua B1A21P Bullet Camera



## Product Information

### Specifications:

- **Brand:** Dahua
- **Product:** Camera
- **Function:** Resetting to factory default settings

### Product Usage Instructions

1. **Connect the Camera to the Computer:** Ensure the camera is physically connected to the computer.
2. **Download and Install Dahua Search Tool ConfigTool 2:** Visit the Dahua website to download the ConfigTool 2 software and install it on your computer.
3. **Use Search Tool to Query Camera's IP Address:** Open the ConfigTool 2 software, search for connected devices, and note down the camera's IP address.
4. **Access the Camera's Web Interface:** Open a web browser and enter the camera's IP address to access the camera's web interface.
5. **Login and Navigate to Factory Reset Option:** Log in to the camera's interface, go to Setting > System > Default, and then select Factory Default.
6. **Restore Factory Settings:** Enter the required password to confirm and execute the factory reset process.

- Max. 30fps@1080P
- HD and SD output switchable
- 3.6mm fixed lens (6mm optional)
- Max. IR length 20m, Smart IR
- IP67, DC12V



### System Overview

Experience 1080P full HD video and the simplicity of using existing cabling infrastructure with HDCVI. The Cooper series 1080P HDCVI camera features a compact design and offers a high-quality image at a friendly price. It offers various varifocal/fixed lens models with a multi-language OSD and HD/SD switchable output. Its structural flexibility and high cost performance makes the camera an ideal choice for SMB solutions.

### Functions

- **4 Signals over 1 Coaxial Cable**

HDCVI technology supports 4 signals to be transmitted over 1 coaxial cable simultaneously, i.e. video, audio\*, data and power. Dual-way data transmission allows the HDCVI camera to interact with the HCVR, such as sending a control signal or triggering the alarm. Moreover, HDCVI technology supports PoC for construction flexibility.

\* Audio input is available for some models of HDCVI cameras.

- **Long Distance Transmission**

HDCVI technology guarantees real-time transmission at long distance without any loss. It supports up to 800m(1080P)/1200m(720P) transmission via coaxial cable, and up to 300m(1080P)/450m(720P) via UTP cable.\*

\*Actual results verified by real-scene testing in Dahua's test laboratory.

- **Simplicity**

HDCVI technology inherits the born feature of simplicity from traditional analog surveillance system, making itself a best choice for investment protection. HDCVI system can seamlessly upgrade the traditional analog system without replacing existing coaxial cabling. The plug and play approach enables full HD video surveillance without the hassle of configuring a network.

- **Smart IR**

The camera is designed with microcrystalline LED IR illumination for best lowlight performance. Smart IR is a technology to ensure brightness uniformity in B/W image under low illumination. Dahua's unique Smart IR adjusts to the intensity of the camera's infrared LEDs to compensate for the distance of an object, and prevents IR LEDs from overexposing images as the object come closer to the camera.

- **Multi-formats**

The camera supports multiple video formats including HDCVI, CVBS and other two common HD analog formats in the market. The four formats can be switched over through OSD menu or by PFM820(UTC controller). This feature makes the camera to be compatible with not only HCVRs but also most end users' existing HD/SD DVRs.

- **Multi-language OSD**

OSD menu provides multiple image adjustments and function settings to meet the requirements of different monitoring scenes. The OSD menu includes configurations such as backlight mode, day/night, white balance, privacy mask and motion detect. The camera supports 11 languages for OSD menu, namely, Chinese, English, French, German, Spanish, Portuguese, Italian, Japanese, Korean, Russian and Polish.

- **Protection**

The camera's outstanding reliability is unsurpassed due to its rugged design. The camera is protected against water and dust with IP67 ranking, making it suitable for indoor or outdoor environments.

With working temperature range of -40°C to +60°C (-40°F to +140°F), the camera is designed for extreme temperature environments.

Supporting ±30% input voltage tolerance, this camera suits even the most unstable power supply conditions. Its 4KV lightning rating provides protection against the camera and its structure from the effects of lightning.

## **Technical Specification**

### **Camera**

Image Sensor	1/2.7" CMOS
Effective Pixels	1920(H)×1080(V), 2MP
Scanning System	Progressive
Electronic Shutter Speed	PAL: 1/25~1/100000s NTSC: 1/30~1/100000s
Minimum Illumination	0.04Lux/F1.85, 30IRE, 0Lux IR on
S/N Ratio	More than 65dB
IR Distance	Up to 20m (66feet)
IR On/Off Control	Auto / Manual

## Lens

Lens Type	Fixed lens / Fixed iris
Mount Type	Board-in
Focal Length	3.6mm (6mm Optional)
Max Aperture	F1.85
Angle of View	H: 93° ( 54.7°)
Focus Control	N/A
Close Focus Distance	800mm (2000mm) 31.50" (78.74")

## DORI Distance

Note: The DORI distance is a “general proximity” of distance which makes it easy to pinpoint the right camera for your needs. The DORI distance is calculated based on sensor specification and lab test result according to EN 62676-4 which defines the criteria for Detect, Observe, Recognize and Identify respectively.

	DORI Definition	Distance
Detect	25px/m (8px/ft)	3.6mm: 51m(167ft) 6mm: 80m(262ft)
Observe	63px/m (19px/ft)	3.6mm: 20m(66ft) 6mm: 32m(105ft)
Recognize	125px/m (38px/ft)	3.6mm: 10m(33ft) 6mm: 16m(51ft)
Identify	250ppm (76px/ft)	3.6mm: 5m(17ft) 6mm: 8m(26ft)

#### Pan / Tilt / Rotation

Pan/Tilt/Rotation	Pan: 0° ~ 360° Tilt: 0° ~ 90° Rotation: 0° ~ 360°
-------------------	---

#### Video

Resolution	1080P (1920×1080)
Frame Rate	25/30fps@1080P, 25/30/50/60fps@720P
Video Output	1-channel BNC high definition video output / CVBS video output (Can switch)
Day/Night	Auto (ICR) / Manual

OSD Menu	Multi-language
BLC Mode	BLC / HLC / DWDR
WDR	DWDR
Gain Control	AGC
Noise Reduction	2D
White Balance	Auto / Manual
Smart IR	Auto / Manual

## Certifications

Certifications	CE (EN55032, EN55024, EN50130-4) FCC (CFR 47 FCC Part 15 subpartB, ANSI C63.4-2014)
----------------	--

## Interface

Audio Interface	N/A
-----------------	-----

## Electrical

Power Supply	12V DC $\pm$ 30%
Power Consumption	Max. 2.7W (12V DC, IR on)

## Environment

Operating Conditions	-40°C ~ +60°C (-40°F ~ +140°F) / Less than 95% RH * Start up should be done at above -40°C (-40°F)
Storage Conditions	-40°C ~ +60°C (-40°F ~ +140°F) / Less than 95% RH
Ingress Protection & Vandal Resistance	IP67

## Construction

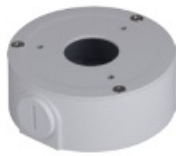
Casing	Plastic
Dimensions	70mm×70mm×149mm (2.76"×2.76"×5.87")
Net Weight	0.14kg (0.31lb)
Gross Weight	0.17kg (0.37lb)

## Ordering Information

Ordering Information		
Type	Part Number	Description
2MP Camera	DH-HAC-B1A21P 3.6mm	2MP HDCVI IR Bullet Camera, PAL
	DH-HAC-B1A21P 6mm	
	DH-HAC-B1A21N 3.6mm	2MP HDCVI IR Bullet Camera, NTSC
	DH-HAC-B1A21N 6mm	
Accessories	PFA134	Junction box (For use alone or with PFA152-E pole mount)
	PFA152-E	Pole mount (For use with PFA134 junction box)
	PFM800-E	Passive HDCVI Balun
	PFM321	12V 1A Power Adapter
	PFM320D-015	12V 1.5A Power Adapter
	PFM300	12V 2A Power Adapter
	PFM820	UTC Controller
Accessories		

## Accessories

Optional:



PFA134  
Junction box



PFA152-E  
Pole mount



PFM800-E  
Passive HDCVI Balun



PFM321  
12V 1A Power Adapter



PFM320D-015  
Power Adapter

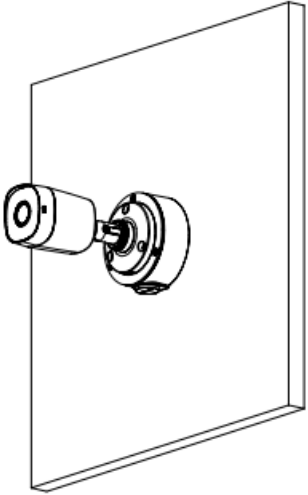
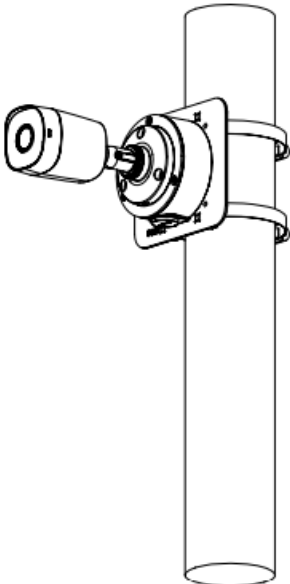


PFM300  
12V 2A Power Adapter



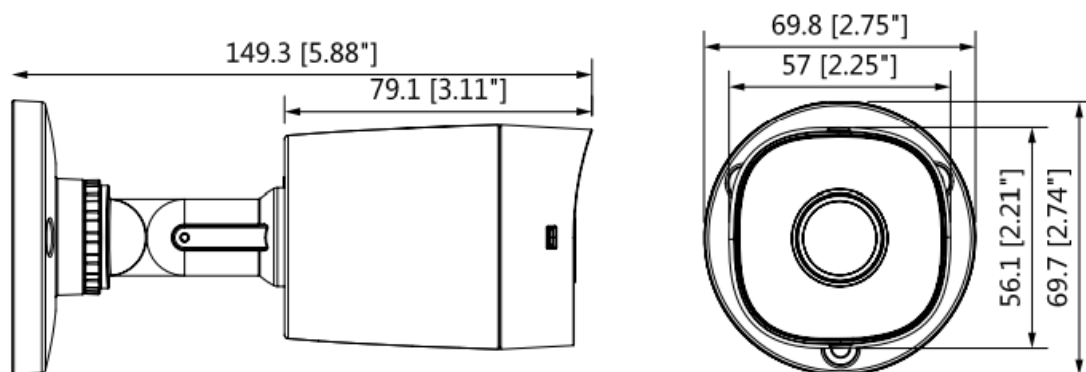
PFM820  
UTC Controller

## Mounting

Junction Mount	Pole Mount
PFA134	PFB134 + PFA152-E
	

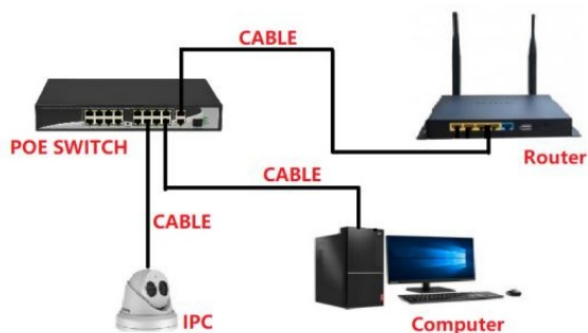


## Dimensions (mm/inch)

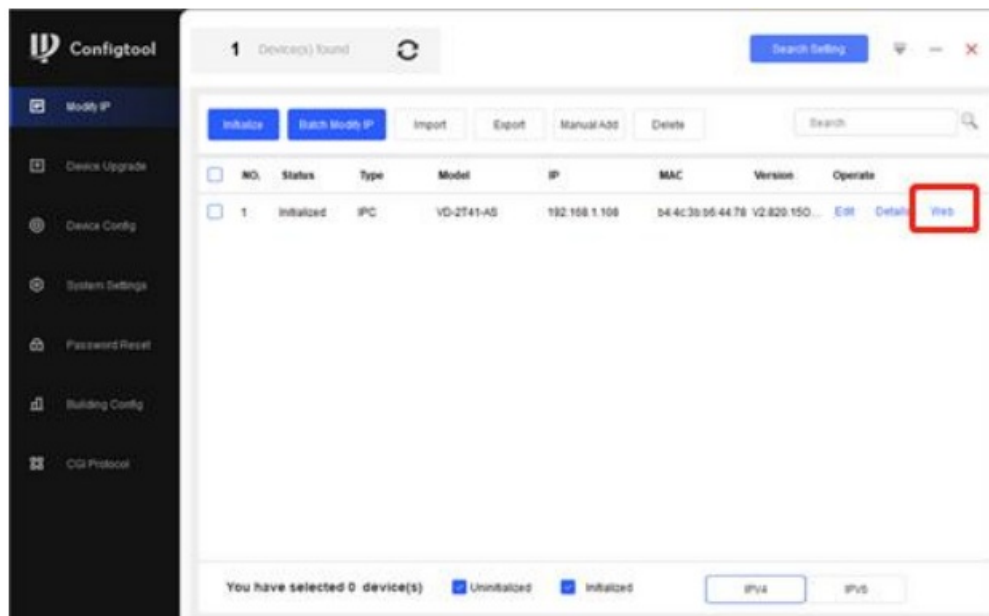


## Dahua Camera reset

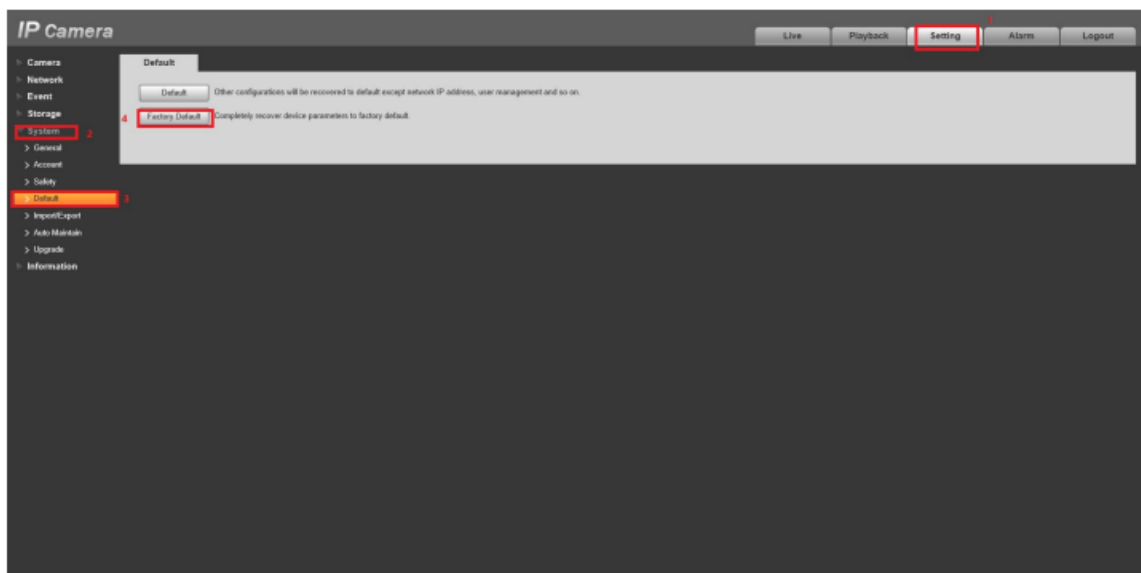
1. Connect the camera to the computer Download and install the Dahua search tool "ConfigTool"



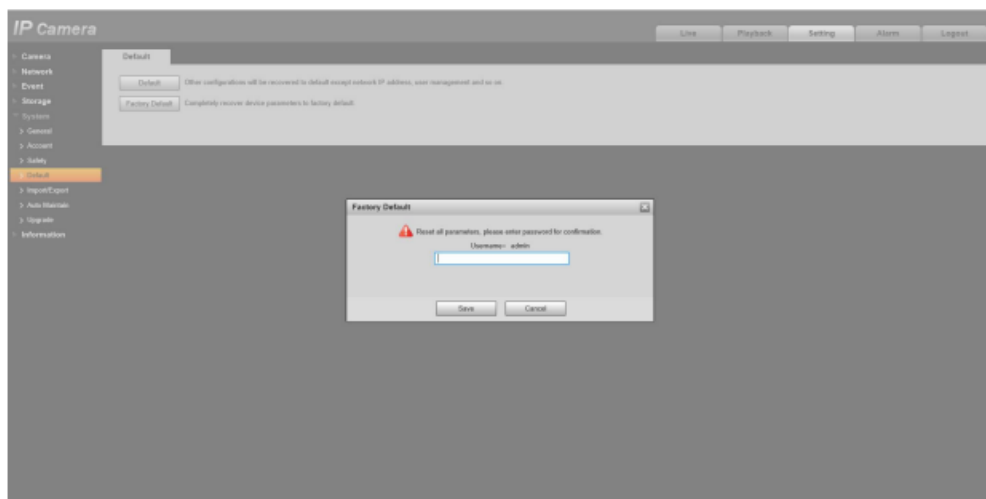
2. By searching tools, query the camera's IP address, click the web webpage



3. Open the camera and log in, click "Setting-System-Default-Factory Default"



4. Enter the password to restore the factory settings



© 2018 Dahua. All rights reserved. Design and specifications are subject to change without notice.

[www.dahuasecurity.com](http://www.dahuasecurity.com)

## FAQ

### Q: What is the default password for Dahua cameras?

A: The default password can vary, but common default passwords for Dahua cameras are usually “admin” or left blank. Refer to the user manual or contact Dahua support for specific information.

### Q: Will resetting my Dahua camera delete all recorded footage?

A: Yes, performing a factory reset will restore the camera to its original settings, which may include deleting recorded footage. Make sure to back up any important recordings before resetting the camera.

## Documents / Resources



[Dahua B1A21P Bullet Camera](#) [pdf] User Guide  
B1A21P Bullet Camera, B1A21P, Bullet Camera, Camera

References

- [User Manual](#)

[Manuals+](#), [Privacy Policy](#)

This website is an independent publication and is neither affiliated with nor endorsed by any of the trademark owners. The "Bluetooth®" word mark and logos are registered trademarks owned by Bluetooth SIG, Inc. The "Wi-Fi®" word mark and logos are registered trademarks owned by the Wi-Fi Alliance. Any use of these marks on this website does not imply any affiliation with or endorsement.