



dahua ARD324-W2 Wireless Door Detector Plus User Guide

[Home](#) » [Dahua](#) » dahua ARD324-W2 Wireless Door Detector Plus User Guide 

Contents

- 1 dahua ARD324-W2 Wireless Door Detector Plus
- 2 Product Information
- 3 Checklist Structure
- 4 Installation
- 5 Replacing the Battery
- 6 Product Usage Instructions
- 7 Checklist
- 8 Structure
- 9 Installation
- 10 Replacing the Battery
- 11 Documents / Resources
- 12 Related Posts



dahua ARD324-W2 Wireless Door Detector Plus



Product Information

- **Product Name:** Wireless Door Detector Plus
- **Model Number:** 1.2.51.32.22169-000
- **Quick Start Guide Version:** V1.0.0
- **Language:** English

Checklist Structure

1. Indicator
2. Peripheral port
3. On/off switch
4. Tamper switch
5. Back cover

Installation

- **Adding the Door Detector to the Hub and Testing Signal Strength:**
 - Make sure that you have added the hub to the DMSS or Dolyнк Care.
 - Ensure that the version of the DMSS app is 1.99.400 or later, and the hub is V1.001.0000005.0 or later.
- **Installing the Door Detector:**

Scan the QR code on the package to receive the user's manual for more information on the device and its installation procedures.

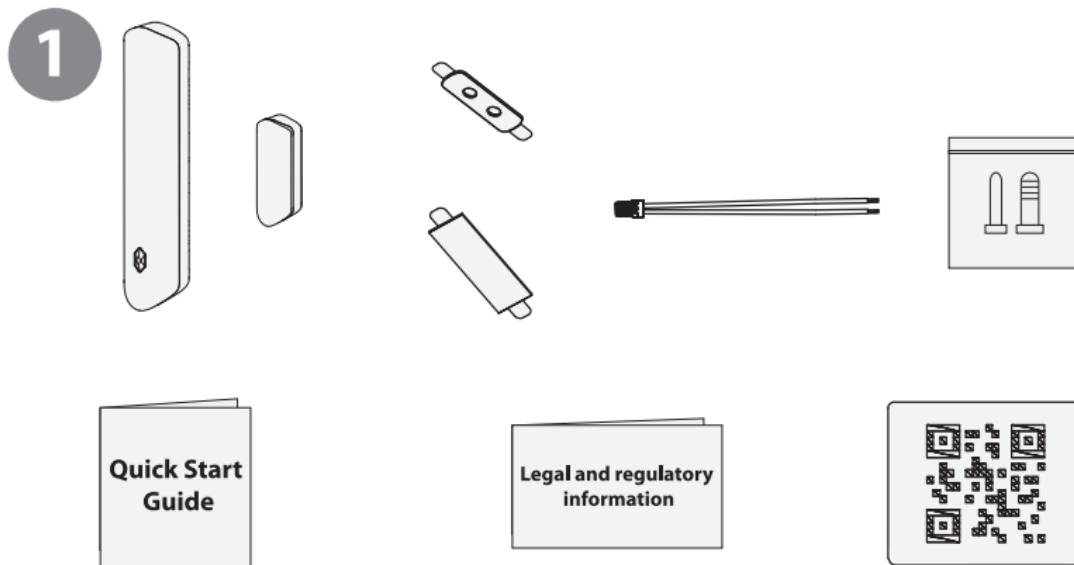
Replacing the Battery

Follow the instructions provided in the user's manual for replacing the battery.

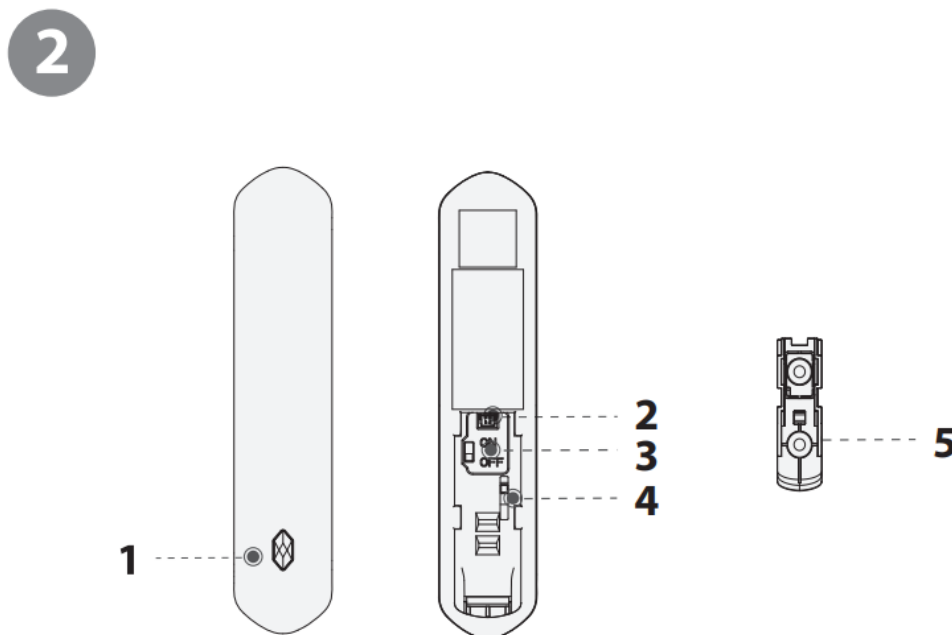
Product Usage Instructions

- **Indicator:** The indicator provides visual feedback about the status of the door detector.
- **Peripheral port:** Connect peripheral devices to this port, if required.
- **On/off switch:** Use this switch to turn the door detector on or off.
- **Tamper switch:** This switch detects any unauthorized tampering with the door detector.
- **Back cover:** Remove the back cover to access the battery compartment or perform any necessary maintenance or installation tasks. Please refer to the user's manual for detailed information on how to add the door detector to the hub, test signal strength, install the door detector, and replace the battery. Note: The information provided is based on the English section of the user manual.

Checklist



Structure



1. Indicator
2. Peripheral port
3. On/off switch

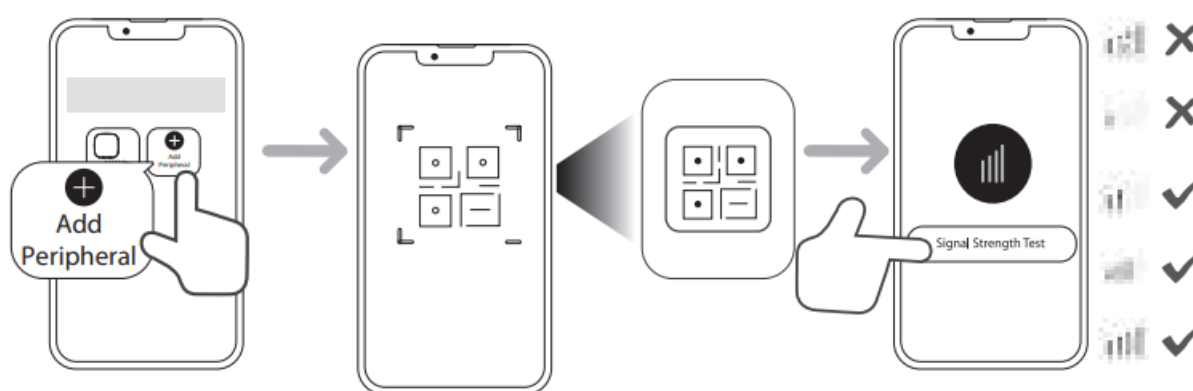
4. Tamper switch
5. Back cover

Installation

1. Adding the Door Detector to the Hub and Testing Signal Strength

- Make sure that you have added the hub to the DMSS or Dolyнк Care.
- Make sure that the version of the DMSS app is 1.99.400 or later, and the hub is V1.001.0000005.0 or later.

3.1

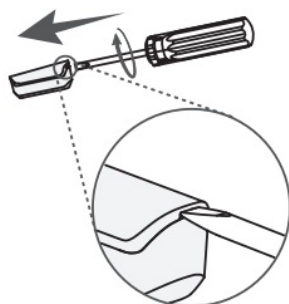


2. Installing the Door Detector

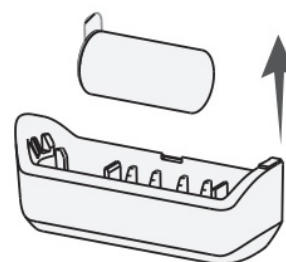
Scan the QR code on the package to receive the user's manual for more information on the device and its installation procedures.

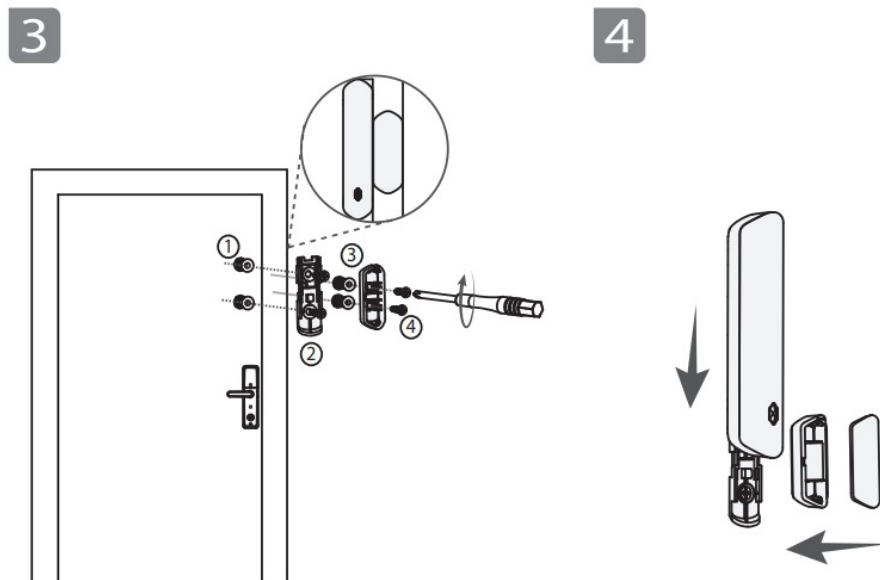
3.2

1

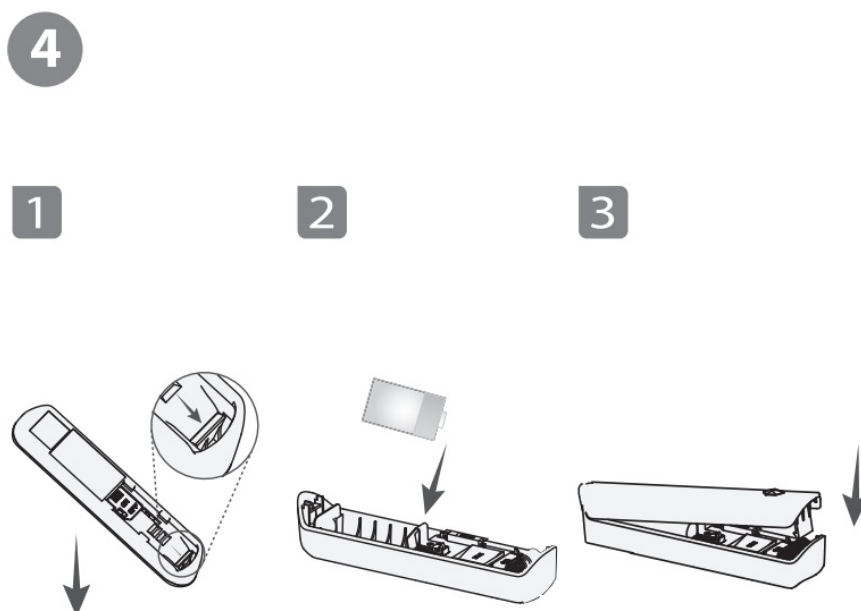


2






Replacing the Battery



Documents / Resources

	<p>dahua ARD324-W2 Wireless Door Detector Plus [pdf] User Guide ARD324-W2 Wireless Door Detector Plus, ARD324-W2, Wireless Door Detector Plus, Door Detector Plus, Detector Plus</p>
---	---