



dahua Alarm Hub User Manual

[Home](#) » [Dahua](#) » dahua Alarm Hub User Manual 

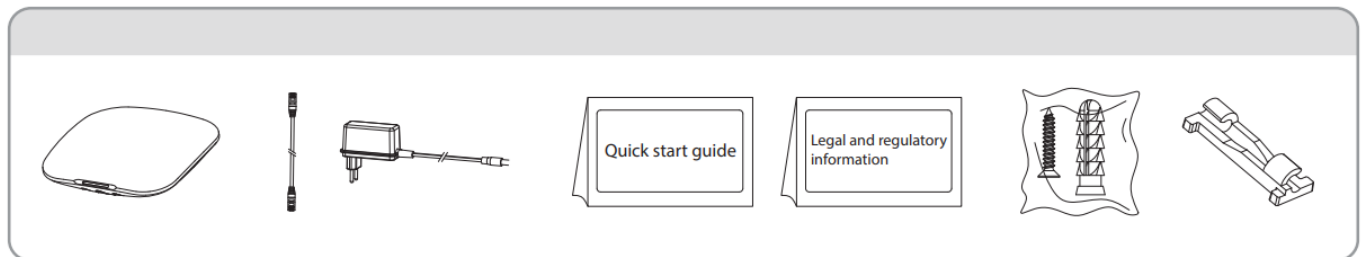
dahua Alarm Hub



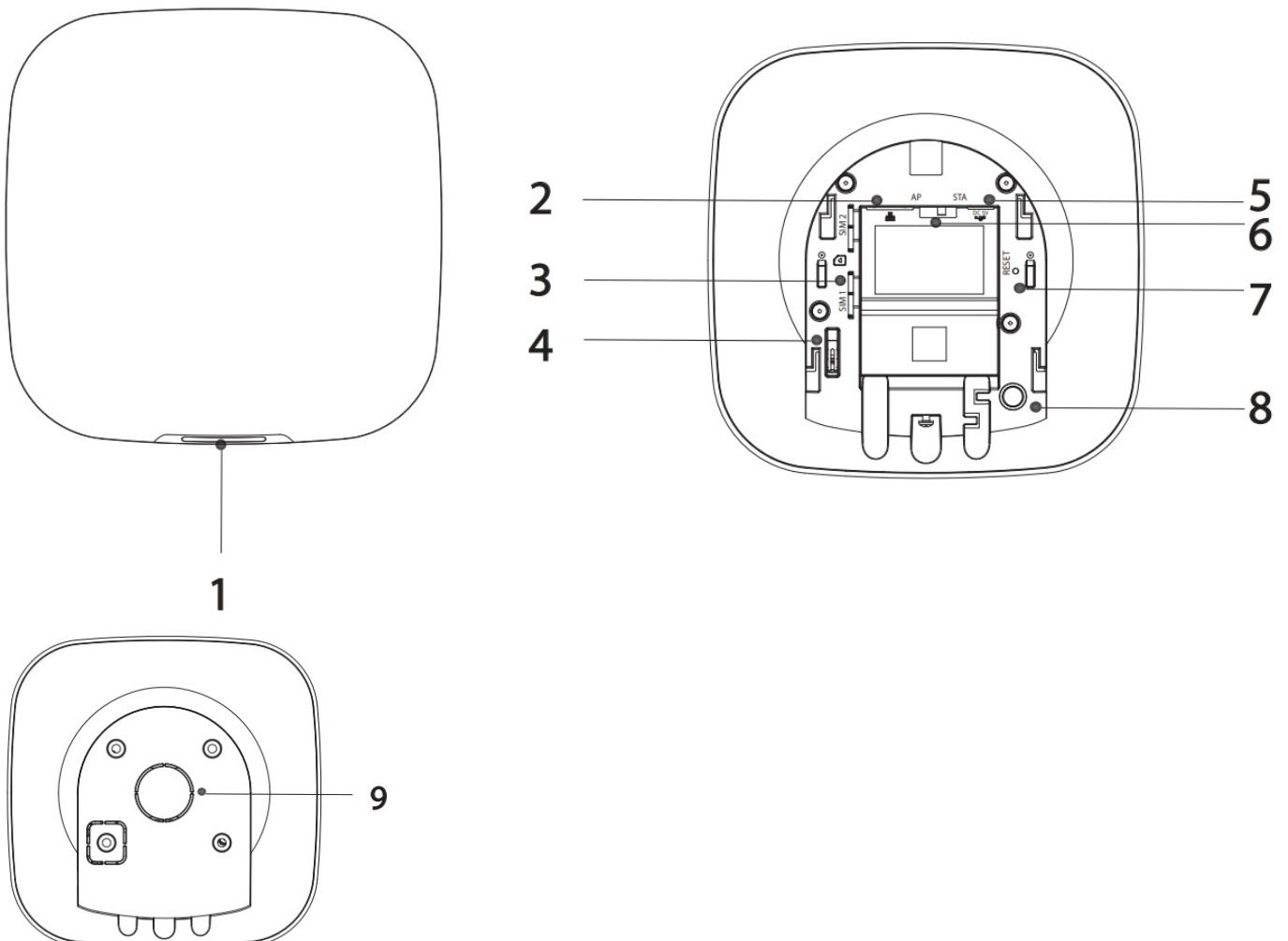
Contents

- [1 Checklist](#)
- [2 Structure](#)
- [3 Installation](#)
- [4 About the Manual](#)
- [5 Important Safeguards and Warnings](#)
- [6 CUSTOMER SERVICE](#)
- [7 Documents / Resources](#)
 - [7.1 References](#)
- [8 Related Posts](#)

Checklist



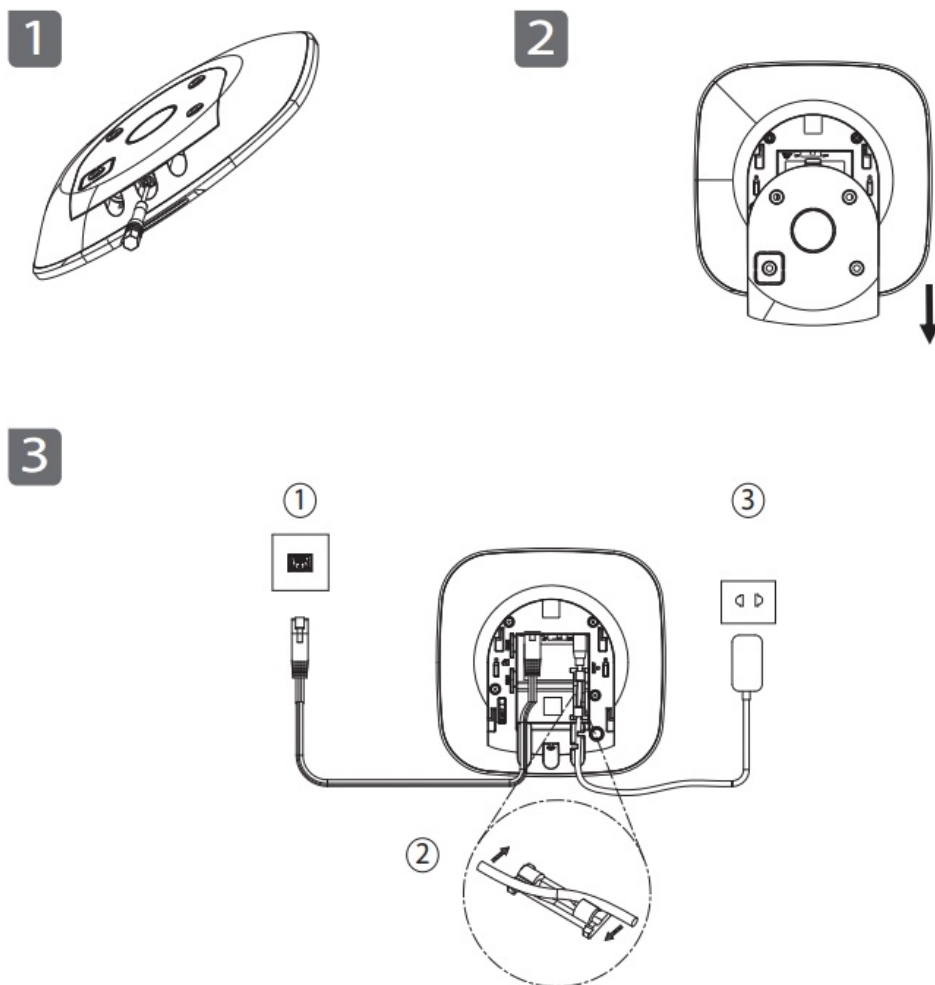
Structure



| No. | Name | No. | Name |
|-----|------------------------|-----|--------------|
| 1 | Indicator | 6 | AP switch |
| 2 | Ethernet cable socket | 7 | Reset switch |
| 3 | Slot for micro SIM 1/2 | 8 | Power switch |
| 4 | Tamper switch | 9 | Back cover |
| 5 | Power cable socket | — | — |

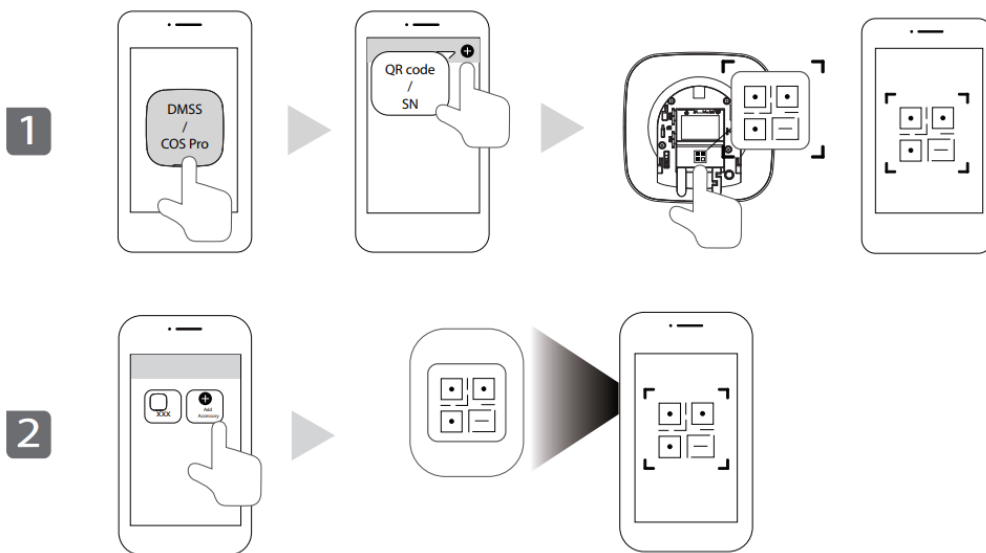
Installation

1. Power on the hub.



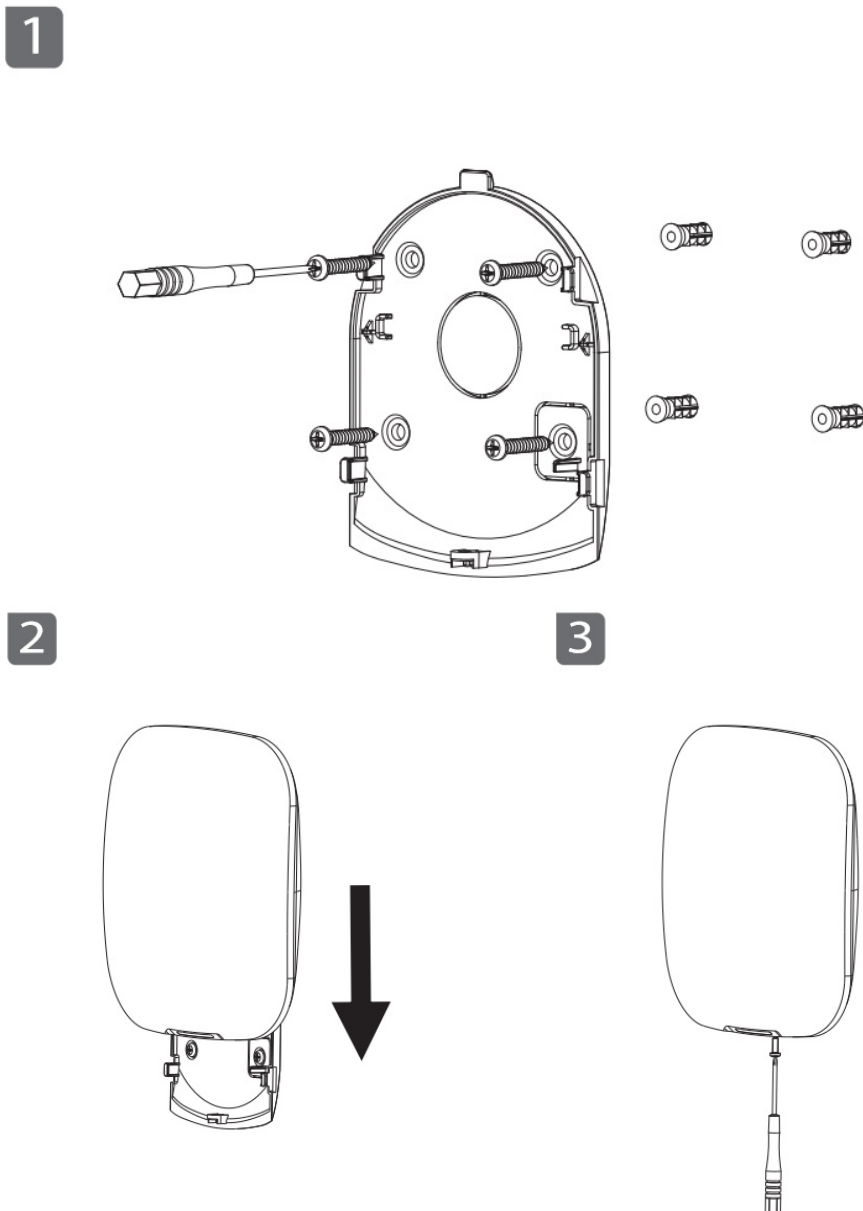
2. Add the hub to the COS Pro and DMSS app.

Add the accessories to the hub.



3. Install the hub

Scan QR code at the package to receive its user's manual for more information on the device and its installation procedures.



- The manual is for reference only. Slight differences might be found between the manual and the product.
- We are not liable for losses incurred due to operating the product in ways that are not in compliance with the manual.
- The manual will be updated according to the latest laws and regulations of related jurisdictions. For detailed information, see the paper user's manual, use our CD-ROM, scan the QR code or visit our official website.
- Important Safeguards and Warnings
- The manual is for reference only. Slight differences might be found between the electronic version and the paper version.
- All designs and software are subject to change without prior written notice. Product updates might result in some differences appearing between the actual product and the manual. Please contact customer service for the latest program and supplementary documentation.
- There might be errors in the print or deviations in the description of the functions, operations and technical data. If there is any doubt or dispute, we reserve the right of final explanation.
- Upgrade the reader software or try other mainstream reader software if the manual (in PDF format) cannot be opened.
- All trademarks, registered trademarks and company names in the manual are properties of their respective owners.
- Please visit our website, contact the supplier or customer service if any problems occur while using the device.
- If there is any uncertainty or controversy, we reserve the right of final explanation.

Important Safeguards and Warnings

This section introduces content covering the proper handling of the Device, hazard prevention, and prevention of property damage. Read carefully before using the Device, comply with the guidelines when using it, and keep the manual safe for future reference.

Operation Requirements


- Make sure that the power supply of the device works properly before use.
- Do not pull out the power cable of the device while it is powered on.
- Only use the device within the rated power range.
- Transport, use and store the device under allowed humidity and temperature conditions.
- Prevent liquids from splashing or dripping on the device. Make sure that there are no objects filled with liquid on top of the device to avoid liquids flowing into it.
- Do not disassemble the device.

Installation Requirements



WARNING

- Connect the device to the adapter before power on.
- Strictly abide by local electrical safety standards, and make sure that the voltage in the area is steady and conforms to the power requirements of the device.
- Do not connect the device to more than one power supply. Otherwise, the device might become damaged.

-  Observe all safety procedures and wear required protective equipment provided for your use while working at heights.
- Do not expose the device to direct sunlight or heat sources.
- Do not install the device in humid, dusty or smoky places.
- Install the device in a well-ventilated place, and do not block the ventilator of the device.
- Use the power adapter or case power supply provided by the device manufacturer
- The power supply must conform to the requirements of ES1 in IEC 62368-1 standard and be no higher than PS2. Note that the power supply requirements are subject to the device label.
- Connect class I electrical appliances to a power socket with protective earthing.

CUSTOMER SERVICE

ZHEJIANG DAHUA VISION TECHNOLOGY CO., LTD.

Address: No.1199 Bin'an Road, Binjiang District, Hangzhou, P. R. China Postcode: 310053

Website: www.dahuasecurity.com


Email: overseas@dahuatech.com

Tel: +86-571-87688883

Fax: +86-571-87688815



Documents / Resources

| | |
|---|--|
|  | <p>dahua Alarm Hub [pdf] User Manual Alarm Hub</p> |
|---|--|

References

-  [Dahua Technology USA Inc - Dahua Technology USA Inc](#)