



Dahua 00282133 Security Camera User Guide

[Home](#) » [Dahua](#) » Dahua 00282133 Security Camera User Guide 

Dahua 00282133 Security Camera User Guide



Contents

- [1 Important Safeguards and Warnings](#)
- [2 Foreword](#)
- [3 Documents / Resources](#)
- [4 Related Posts](#)

Important Safeguards and Warnings

Electrical Safety

- All installation and operation shall conform to your local electrical safety codes,
- Note that the power supply requirement is subject to the device label,
- Make sure that the power supply is correct before operating the device
- A readily accessible disconnecting device shall be incorporated in the building installation wiring.

- Prevent the power cable from being trampled or pressed; especially the plug, power socket and the junction extruded from the device.

Environment

- Do not aim the device at strong light to focus, such as lamp light and sun light; otherwise it might cause over brightness or light marks, which are not the device malfunction, and affect the longevity of Complementary Metal-Oxide Semiconductor (CMOS).
- Do not place the device in damp, dusty, extremely hot or cold environment, and avoid places with strong electromagnetic radiation or unstable lighting.
- Keep the indoor device away from rain or damp to avoid fire or lightning.
- Install the device in a well ventilated place and do not block the ventilation of the device.
- Transport, use and store the device under the allowed humidity and temperature.




Foreword

General

This manual introduces the functions, installation and operations of the camera.

Safety Instructions

The following signal words might appear in the manual.

Signal Words	Meaning
 Warning	Indicates a medium or low potential hazard which, if not avoided, could result in slight or moderate injury
 caution	Indicates a potential risk which, if not avoided, could result in property damage, data loss, lower performance, or unpredictable result
 Note	Provides additional information as a supplement to the text

Privacy Protection Notice

As the device user or data controller, you might collect the personal data of others such as their face, fingerprints, and license plate number. You need to be in compliance with your local privacy protection laws and regulations to protect the legitimate rights and interests of other people by implementing measures which include but are not limited: Providing clear and visible identification to inform people of the existence of the surveillance area and provide required contact information

- Heavy stress, violent vibration or water splash are not allowed during transportation, storage and installation. Use the factory default package or material with equal quality to pack the device when transporting.
- Install the device in the location where only the professional staff with relevant knowledge of safety guards and warnings can access.

Operation and Daily Maintenance

- Do not touch the heat dissipation component of the device to avoid
- Carefully follow the instructions in the manual when performing any disassembly operation about the device, otherwise it might cause water leakage or poor image quality due to unprofessional disassembly. Please contact after-sale service for desiccant replacement if there is condensed fog on the lens after unpacking or when the desiccant turns green (Not all models are included with the desiccant
- It is recommended to use the device together with lightning arrester to improve lightning protection effect.
- It is recommended to ground the device to enhance reliability.
- Do not touch the image sensor directly. Use a dry cloth dampened with alcohol and gently wipe away any dust on the lens
- You can clean the device body with soft dry cloth, and for stubborn stains, use the cloth with mild detergent. To avoid possible damage on device body coating which could cause performance decrease, do not use volatile solvent such as alcohol, benzene, diluent and so on to dean the device body, nor can strong, abrasive detergent be used.

About the Manual

- The manual is for reference only. Slight differences might be found between the manual and the product
- We are not lable for losses incurred due to operating the product in ways that are not in compliance with the manual.
- The manual will be updated according to the latest laws and regulations of related jurisdictions. For detailed information, see the paper user's manual use our CD-ROM, scan the QR code or visit our official website. The manual is for reference only. Slight differences might be found between the electronic version and the paper version
- Upgrade the reader software or try other mainstream reader software if the manual In PDF format) cannot be opened. All designs and software are subject to change without prior written notice Product updates might result in some differences appearing between the actual product and the manual Please contact customer service for the latest program and supplementary documentation.
- There might be errors in the print or deviations in the description of the functions operations and technical data there is any doubt or dispute, we reserve the night of final explanations
- Upgrade the reader software or try other mainstream reader software if the manual lin PDF format) cannot be opened
- All trademarks, registered trademarks and company names in the manual are properties of their respective owners.
- Please visit our website, contact the supplier or customer service any problems occur while using the device.
- If there is any uncertainty or controversy, we reserve the right of final explanation



CAUTION

- Strengthen the protection of network, device data and personal information by adopting measures which include but not limited to using strong password, changing password regularly updating femware to the latest version, and isolating computer network For some device with old firmware versions, the ONVF password will

not be modified automatically along with the modification of the system password, and you need to upgrade the firmware or manually update the ONVF password

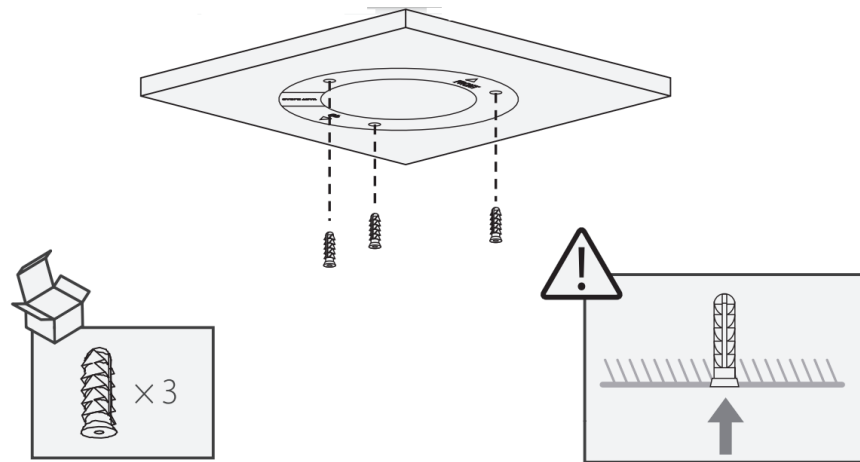
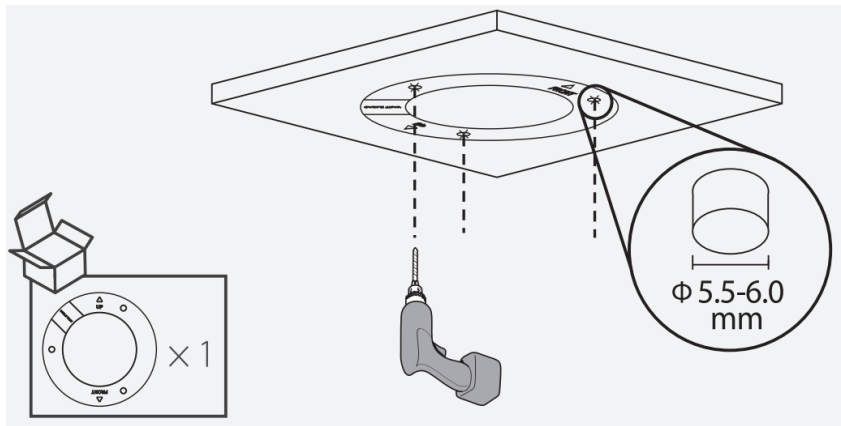
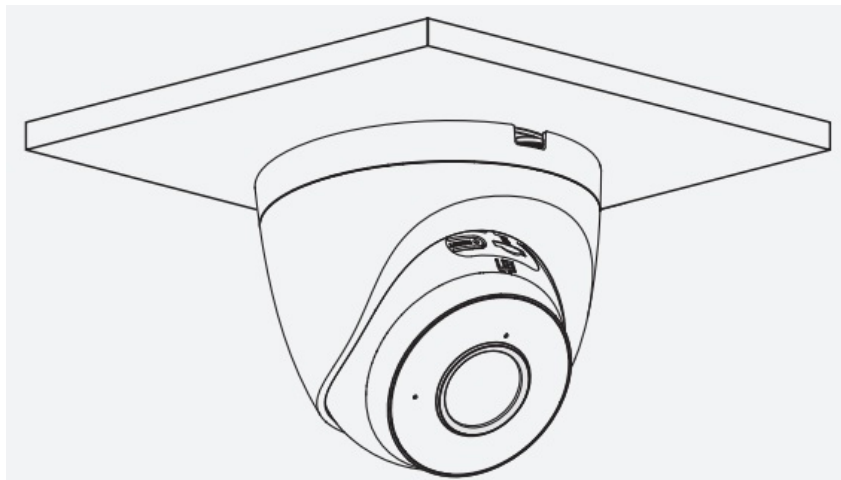
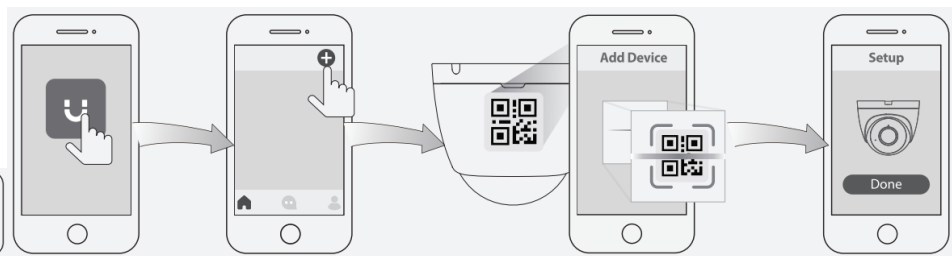
- Use standard components or accessories provided by manufacturer and make sure that the device is installed and maintained by professional engineers
- The surface of the image sensor should not be exposed to laser • Do not provide two or more power supply sources for the device unless otherwise specified. A failure to follow this instruction might Cause damage to the device

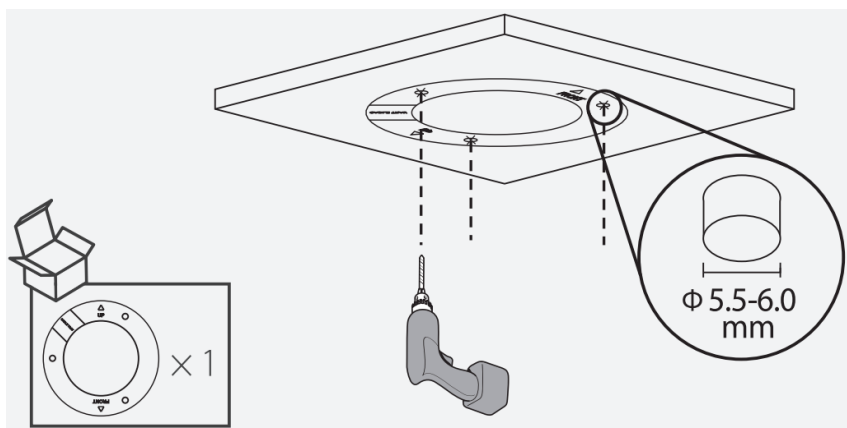
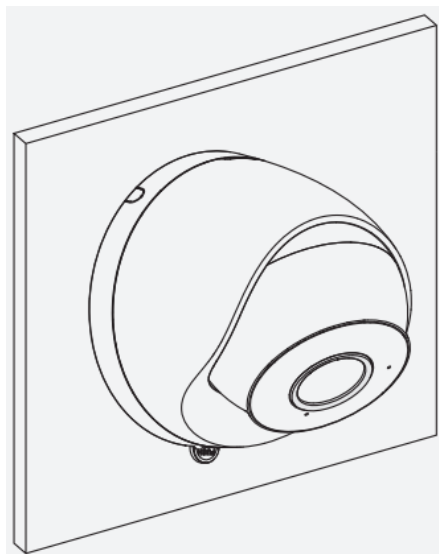
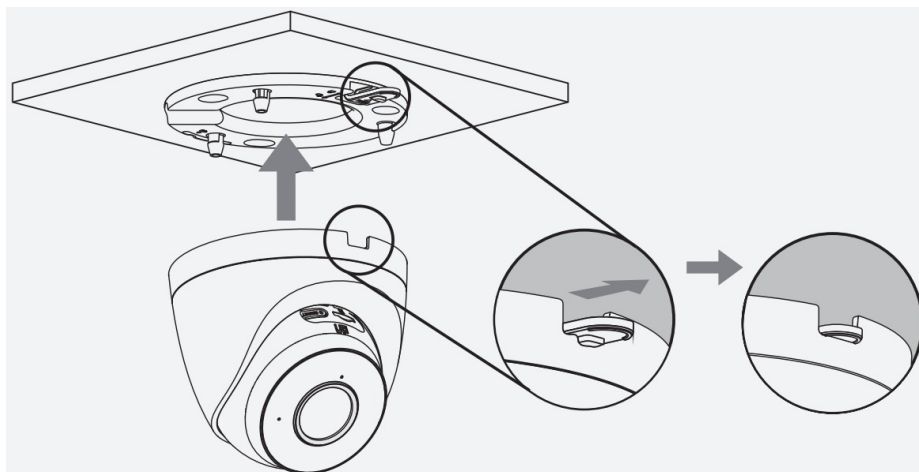
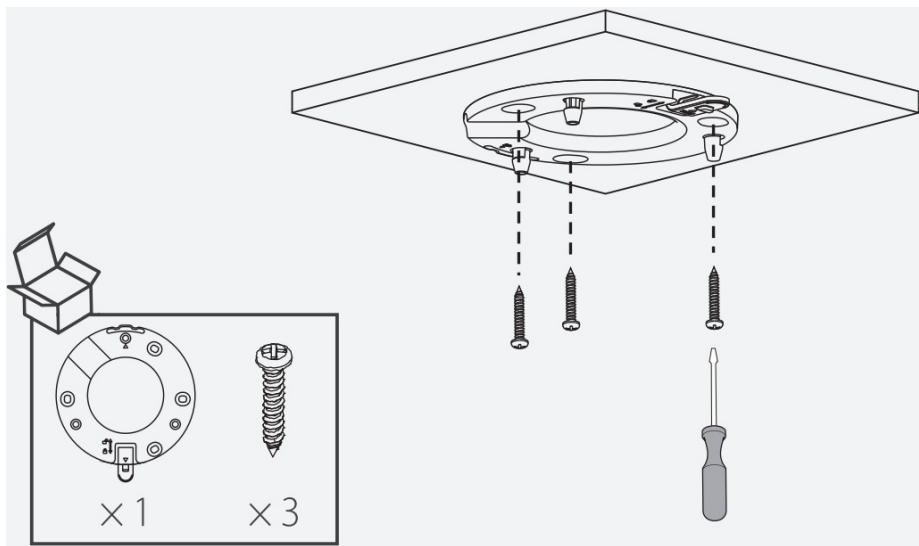
1. Power On the Camera conctone part 1 on the rear page
2. Get the Imou Life App Scan the don part 2 orech download and
3. Set Up the Camera Scan the of code on the body of the device with the app, and then follows to complete the setup see part
4. Install the Camera the weight of the camera Fordelen pocess is see

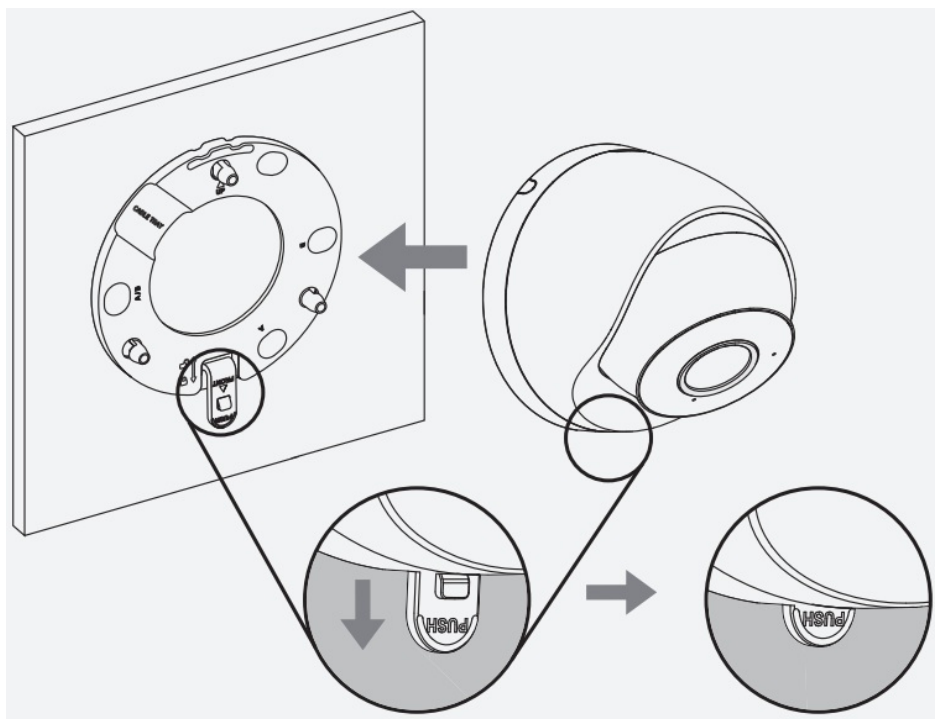
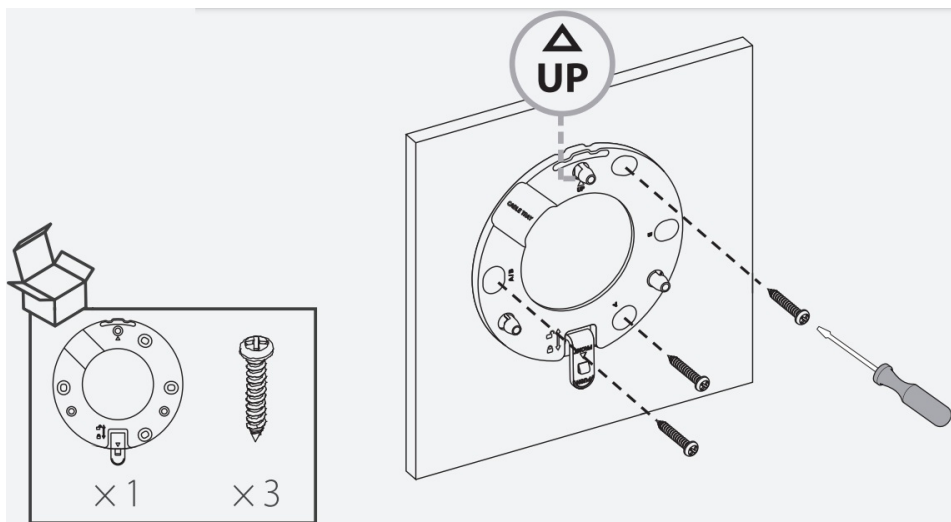
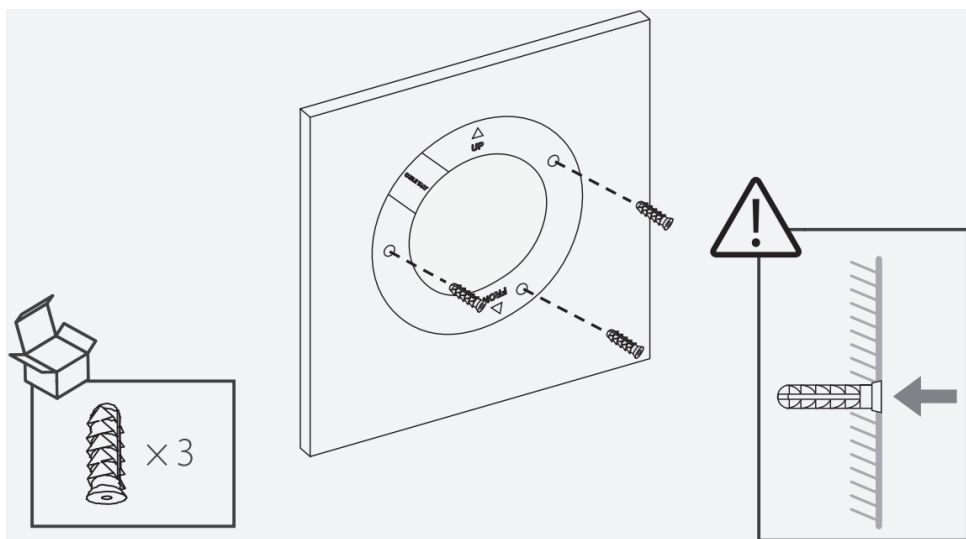
Make sure the mounting surface is strong enough to hold three times the weight of the camera, For detailed installation process, please see part 4

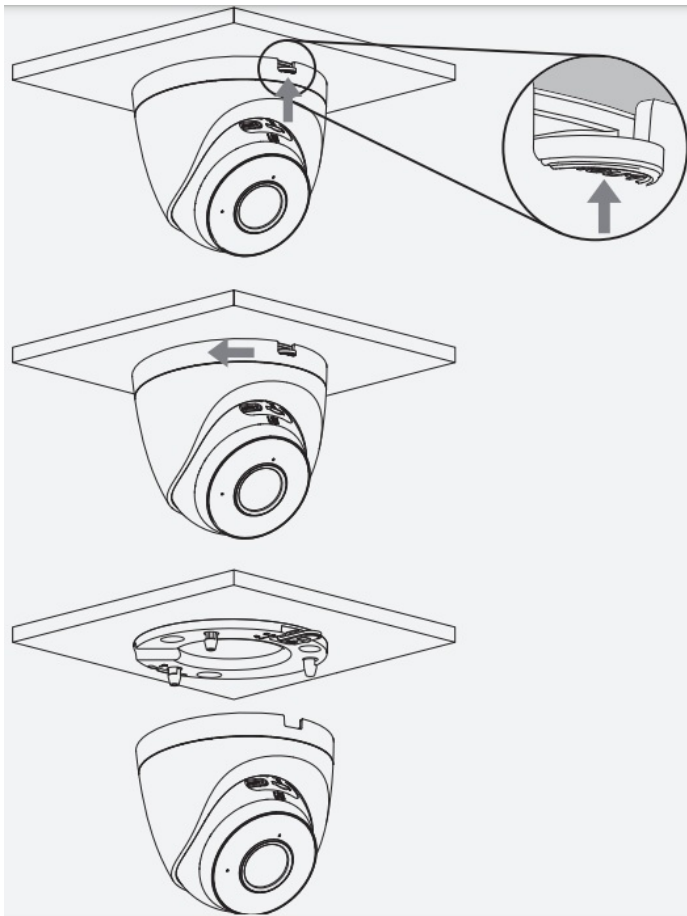
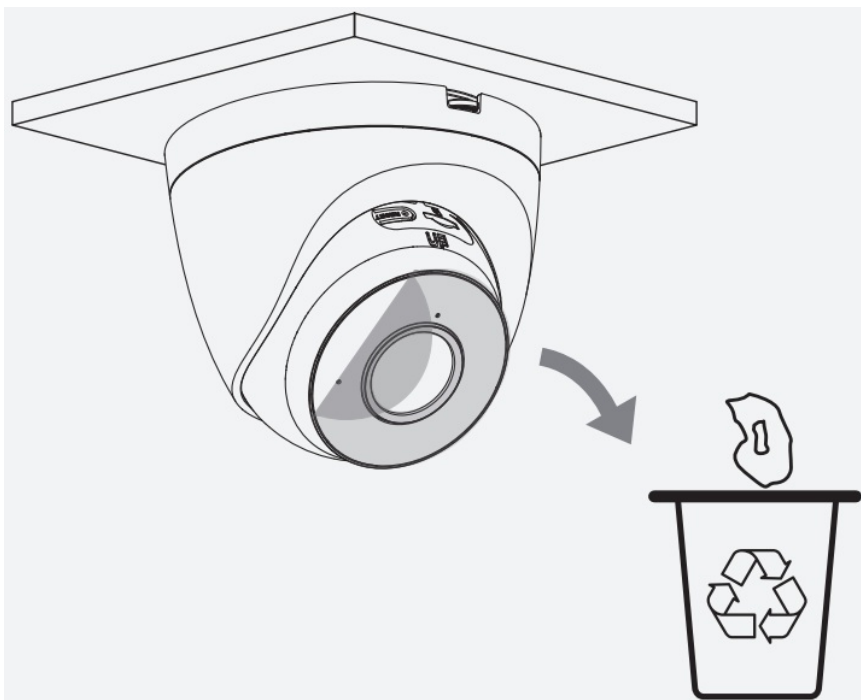
LED Status	Device Status
off	<ul style="list-style-type: none">• Power off• LED turned off
Solid Red	<ul style="list-style-type: none">• Booting
Flashing Green	<ul style="list-style-type: none">• Device malfunction
Solid Green	<ul style="list-style-type: none">• Operating correctly
Flashing Green And RED	<ul style="list-style-type: none">• Updating firmware

In case you need to reset the camera, press and hold the reset button for 10 until the LED tums sold red.









Documents / Resources



[Dahua 00282133 Security Camera](#) [pdf] User Guide
00282133 Security Camera, 00282133, Security Camera, Camera

