

Dahua

Dahua
Technology IPC-
HFW2649S-S-IL
Bullet IP Security
Camera



Dahua Technology IPC-HFW2649S-S-IL Bullet IP Security Camera Installation Guide

[Home](#) » [Dahua Technology](#) » Dahua Technology IPC-HFW2649S-S-IL Bullet IP Security Camera Installation Guide 

Contents

- [1 Dahua Technology IPC-HFW2649S-S-IL Bullet IP Security Camera](#)
- [2 Specifications](#)
- [3 Package Contents](#)
- [4 Installation Steps](#)
- [5 Documents / Resources](#)
 - [5.1 References](#)
- [6 Related Posts](#)

Dahua

Dahua Technology IPC-HFW2649S-S-IL Bullet IP Security Camera

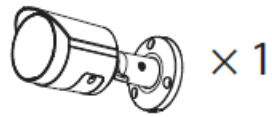
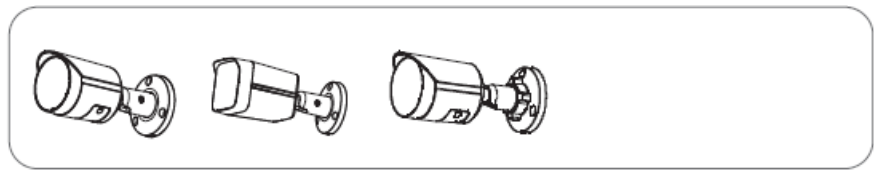


Specifications

Model	1.2.51.32.23710-000
--------------	---------------------

Package Contents

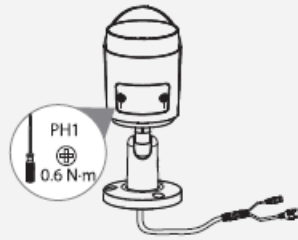
- Bullet Network Camera x1
- Mounting Base x1
- Screws x2
- Optional Accessories x1



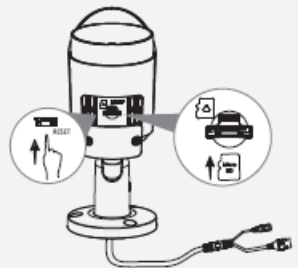
Installation Steps

Step 1: Camera Preparation

1.1

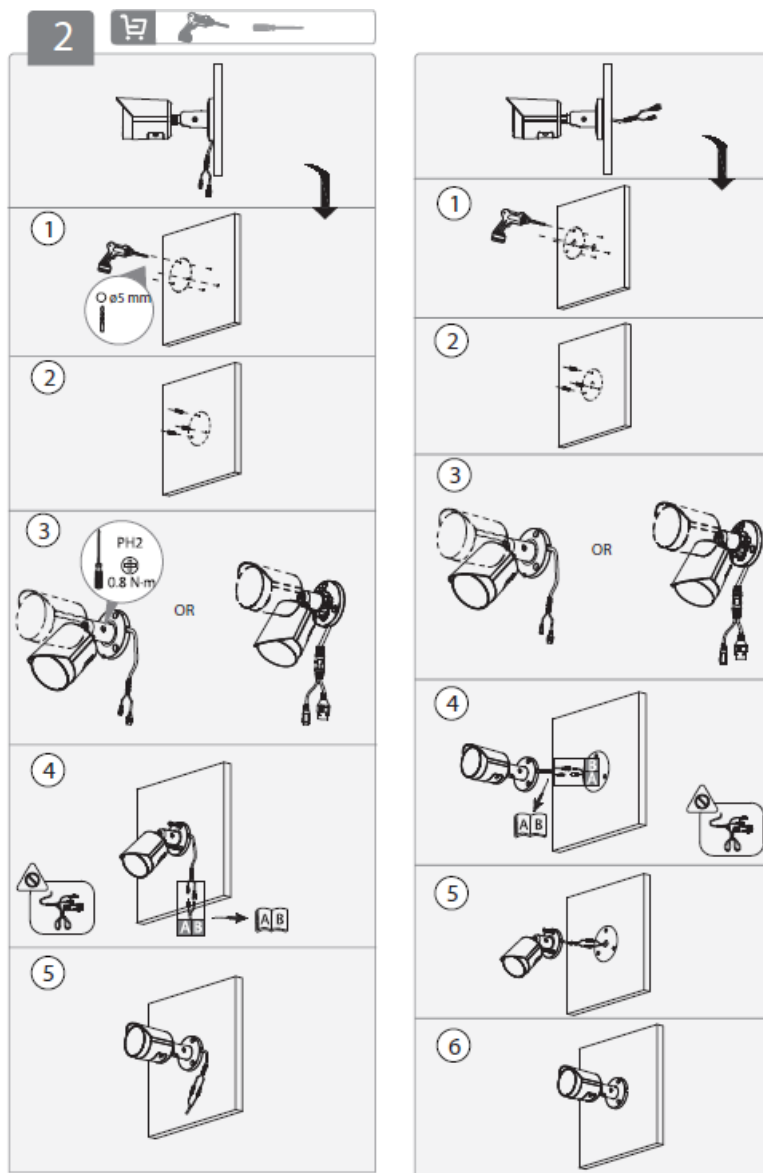


1.2



1. Use a PH1 screwdriver to tighten the screws with a torque of 0.6 N·m.

Step 2: Mounting the Camera

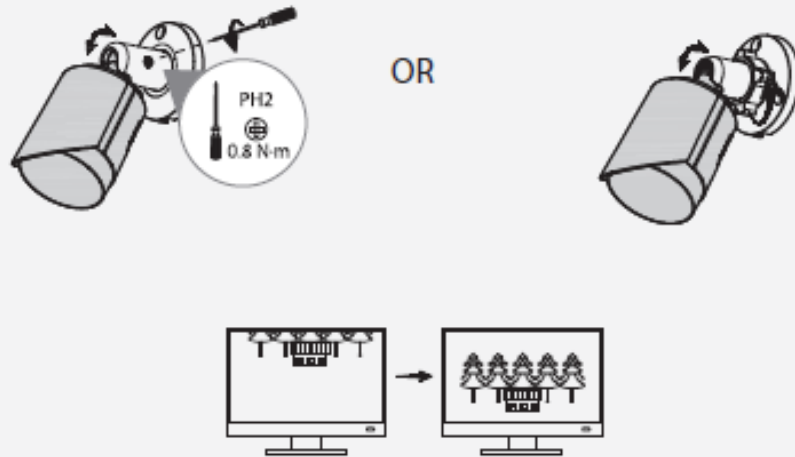


1. Drill holes in the wall using a 6 mm drill bit.
2. Insert wall anchors.
3. Attach the mounting base using a PH2 screwdriver with a torque of 0.8 N·m.
4. Secure the camera to the mounting base.
5. Adjust the camera angle as needed.
6. Ensure all connections are secure.

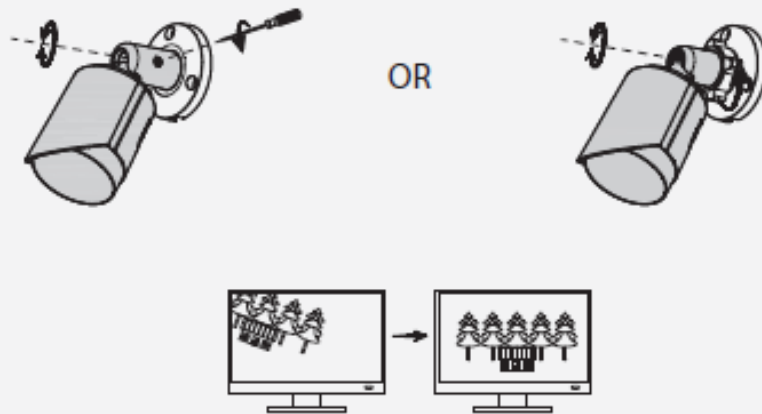
Step 3: Optional Connections

3

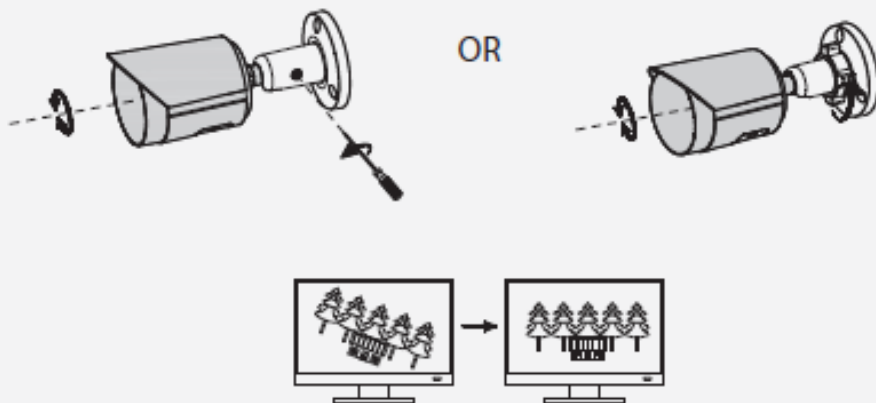
3.1



3.2



3.3

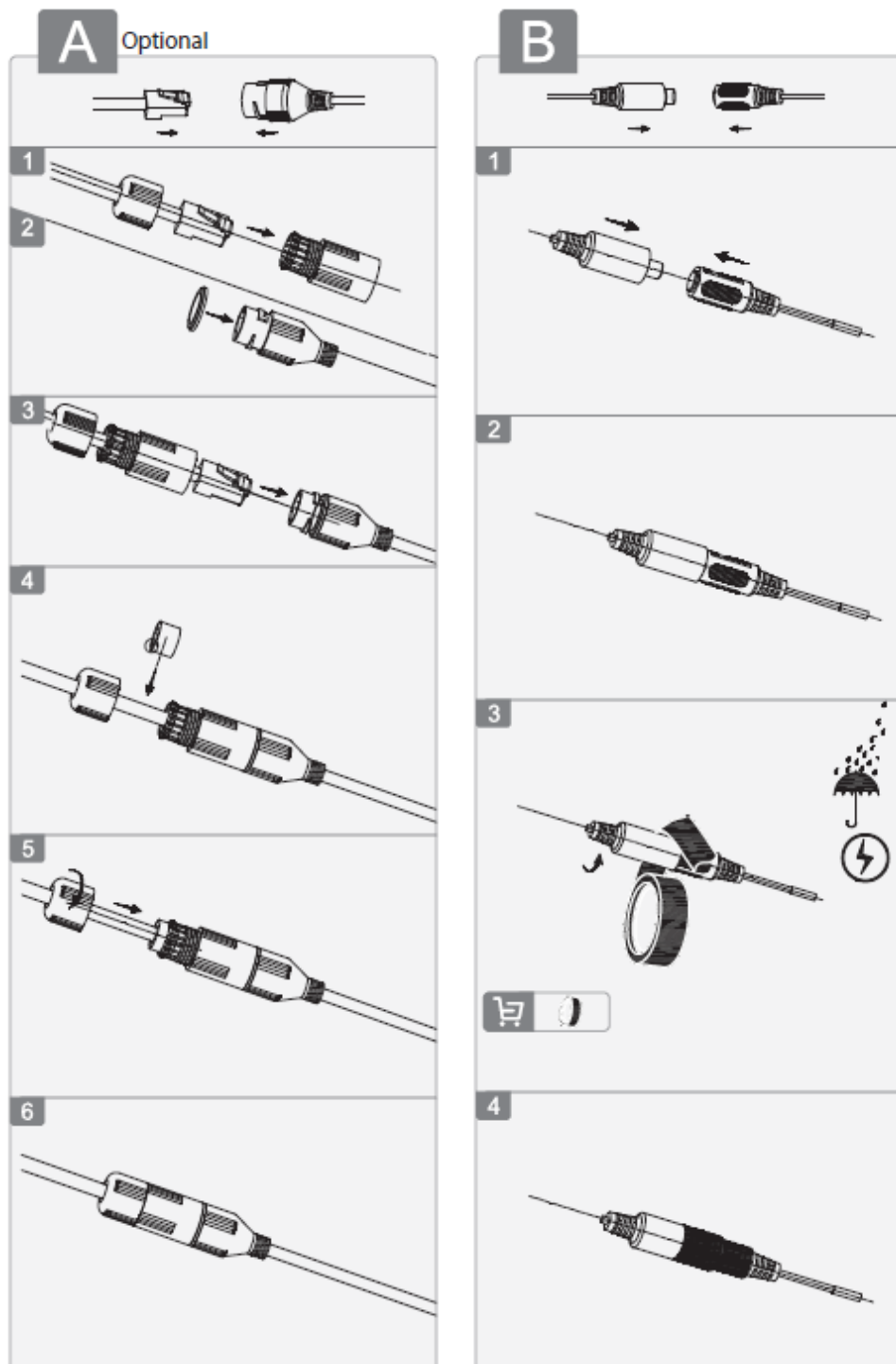


Option A: Cable Connection

1. Connect the cables as shown.
2. Ensure the connectors are securely fastened.
3. Use waterproof tape to protect the connection.

Option B: Additional Setup

1. Connect additional components as needed.
2. Ensure all connections are weatherproofed.



FAQ

1. What tools do I need for installation?

You will need a PH1 and PH2 screwdriver, a drill with a 6 mm bit, and waterproof tape.

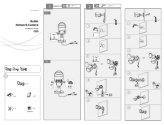
2. Can I adjust the camera angle after installation?

Yes, you can adjust the camera angle using a PH2 screwdriver.

3. How do I ensure the connections are waterproof?

Use waterproof tape to cover all exposed connections.

Documents / Resources



[Dahua Technology IPC-HFW2649S-S-IL Bullet IP Security Camera](#) [pdf] Installation Guide
IPC-HFW2649S-S-IL Bullet IP Security Camera, IPC-HFW2649S-S-IL, Bullet IP Security
Camera, IP Security Camera, Security Camera

References

- [User Manual](#)

[Manuals+](#), [Privacy Policy](#)

This website is an independent publication and is neither affiliated with nor endorsed by any of the trademark owners. The "Bluetooth®" word mark and logos are registered trademarks owned by Bluetooth SIG, Inc. The "Wi-Fi®" word mark and logos are registered trademarks owned by the Wi-Fi Alliance. Any use of these marks on this website does not imply any affiliation with or endorsement.