

Dahua Technology DH-T5A-IL 5MP Fixed Focal Wi-Fi Turret Network Camera User Guide

August 16,
2025



Contents [[hide](#)]

- [1 5MP Fixed-focal Wi-Fi Turret Network Camera](#)
- [2 DH-T5A-IL](#)
 - [2.1 Series Overview](#)
 - [2.2 Upgrade Your Experience with DMSS](#)
 - [2.3 Specifications](#)
 - [2.3.1 Camera](#)
 - [2.3.2 Intelligence](#)
 - [2.3.3 Audio and Video](#)
 - [2.3.4 Network](#)
 - [2.3.5 General](#)
 - [2.4 What's in the box](#)
- [3 Documents / Resources](#)
 - [3.1 References](#)



5MP Fixed-focal Wi-Fi Turret Network Camera

DH-T5A-IL

Series Overview

Driven by industry-leading technology, Dahua Wireless Series network cameras are highly precise and easy to install, producing high-quality images. They have strong wireless connection capabilities and do not require network cables, eliminating the need for a professional construction team. This series of cost-effective cameras supports local storage and is dustproof and waterproof. It is ideal for small and medium-sized scenes such as retail stores, homes, and other small and medium-sized enterprises.



5MP

Clear images with sharp details



Built-in Mic

Provides traceable audio details



Wi-Fi 6

Seamless integration of speed and anti-interference



DMSS App

Easy to use



AI Human Detection

Focuses on what matters and reduces false alarms



Smart Dual Light

Captures color details for post-event review



H.265

Advanced H.265 compression technology



Supports Micro SD Card

Low-cost storage



AI Vehicle Detection

Focuses on what matters and reduces false alarms



IP67 Protection

Withstands harsh environments



Bluetooth Pairing

Fast pairing with Bluetooth



Upgrade Your Experience with DMSS

Intuitive AIoT app for individual security



Remote Management

Live view and recording history



Easy sharing

Safer device sharing with family and friends

Notifications and Alerts

Accurate and timely

High Security

Stay secure with all data encrypted



Available on the
App Store

GET IT ON
Google Play



1. Warm Light
2. Indicator
3. Lens
4. Microphone
5. IR Light

Specifications

Camera

Image Sensor	1/2.7" CMOS
Max. Resolution	2880 (H) × 1620 (V)
Min. Illumination	0.007 lux@F1.6 (Color, 30 IRE) 0.0007 lux@F1.6 (B/W, 30 IRE) 0 lux (Illuminator on)

Illumination Distance	Up to 30 m (98.43 ft) (IR) Up to 30 m (98.43 ft) (Warm light)
Illuminator Number	1 (IR LED); 1 (Warm light)
Angle Adjustment	Pan: 0°-360° Tilt: 0°-78° Rotation: 0°-360°
Lens Type	Fixed-focal
Focal Length	2.8 mm; 3.6 mm
Max. Aperture	F1.6
Field of View	2.8 mm: H: 108°; V: 57°; D: 129° 3.6 mm: H: 89°; V: 48°; D: 104°

Intelligence

Human Detection	Yes
Vehicle Detection	Yes

Audio and Video

Video Compression	H.264B; H.264; H.264H; H.265
Video Frame Rate	Main stream: 2880 × 1620@(125/30 fps) sub stream: 640 × 360@(125/30 fps) *The values above are the max. frame rates of each stream; for multiple streams, the values will be subjected to the total encoding capacity.
Video Bit Rate	H.264: 32 kbps-4096 kbps H.265: 32 kbps-4096 kbps

Day/Night	Auto(ICR)/Color/B/W
WDR	DWDR
Image Rotation	0°/180°
Built-in MIC	Yes, built-in Mic
Audio Compression	G.711a; G.711Mu; PCM

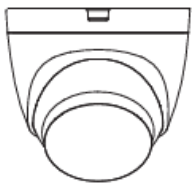
Network

Network Port	RJ-45 (10/100 Base-T)
Wi-Fi	IEEE 802.11b/g/n/ax 2.40002.4835 GHz, 2.4 G, EIRP ≤20 dBm
Wi-Fi Pairing	Bluetooth pairing
Interoperability	ONVIF (Profile S & Profile G & Profile T); CGI
Storage	Micro SD card (support max. 256 GB)
Management Software	Smart PSS Lite; DSS; DMSS
Mobile Client	iOS; Android

General

Certifications	CE-LVD: EN62368-1; CE-EMC: Electromagnetic Compatibility Directive 2014/30/EU; CE-RED: Radio Equipment Directive 2014/53/EU
Power Supply	12 VDC
Power Consumption	Basic: 2.1 W (12 VDC); Max.: 5.1 W (12 VDC) (H.265 + warm light on)
Operating Temperature	-40 °C to +60 °C (-40 °F to +140 °F)
Operating Humidity	≤95% (RH), non-condensing
Protection	IP67
Camera Button	Reset button
Casing Material	Metal + plastic
Product Dimensions	102.2 mm × Φ109.9 mm (4.02" × Φ4.33")
Net Weight	0.32 kg (0.71 lb)

What's in the box



× 1

Tools:



Position Map × 1



Screw Package × 1



Waterproof Connector × 1



Mounting Plate × 1

Documents:



QR Code × 1



Quick Start Guide × 1

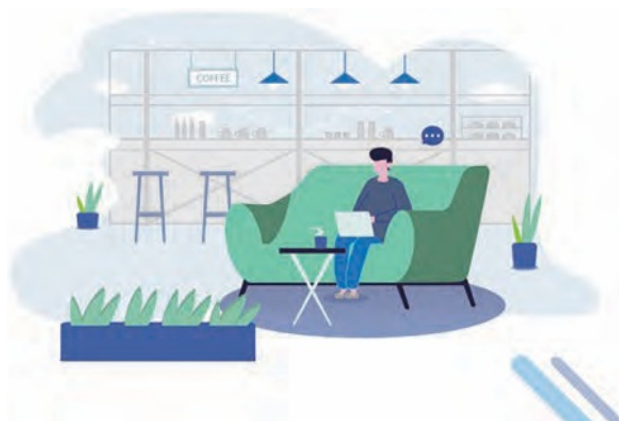


Legal and regulation information × 1

Power:



Power Adapter × 1




Rev 002.000

© 2025 Dahua. All rights reserved. Design and specifications are subject to change without notice.

The images, specifications and information mentioned in the document are only for reference, and might differ from the actual product.

Documents / Resources


	<p>Dahua Technology DH-T5A-IL 5MP Fixed Focal Wi-Fi Turret Network Camera [pdf] User Guide</p> <p>DH-T5A-IL, IPC-T5A-IL-0280B, DH-T5A-IL 5MP Fixed Focal Wi-Fi Turret Network Camera, DH-T5A-IL, 5MP Fixed Focal Wi-Fi Turret Network Camera, Fixed Focal Wi-Fi Turret Network Camera, Focal Wi-Fi Turret Network Camera, Wi-Fi Turret Network Camera, Turret Network Camera, Network Camera</p>
---	--

References

- [User Manual](#)

 Dahua

Technology

 5MP Fixed Focal Wi-Fi Turret Network Camera, Dahua Technology, DH-T5A-IL, DH-T5A-IL 5MP Fixed Focal Wi-Fi Turret Network Camera, Fixed Focal Wi-Fi Turret Network Camera, Focal Wi-Fi Turret Network Camera, IPC-T5A-IL-0280B, Network Camera, Turret Network Camera, Wi-Fi Turret Network Camera

Leave a comment

Your email address will not be published. Required fields are marked *

Comment *

Name

Email

Website

☐ Save my name, email, and website in this browser for the next time I comment.

Post Comment

Search:

e.g. whirlpool wrf535swhz

Search

[Manuals+](#) | [Upload](#) | [Deep Search](#) | [Privacy Policy](#) | [@manuals.plus](#) | [YouTube](#)

This website is an independent publication and is neither affiliated with nor endorsed by any of the trademark owners. The "Bluetooth®" word mark and logos are registered trademarks owned by Bluetooth SIG, Inc. The "Wi-Fi®" word mark and logos are registered trademarks owned by the Wi-Fi Alliance. Any use of these marks on this website does not imply any affiliation with or endorsement.