

# DAB Esybox Mini 3 On Demand Constant Pressure Variable Speed Pump User Guide

[Home](#) » [Dab](#) » DAB Esybox Mini 3 On Demand Constant Pressure Variable Speed Pump User Guide 

## Contents

- 1 DAB Esybox Mini 3 On Demand Constant Pressure Variable Speed Pump
- 2 Specifications
- 3 Product Information
- 4 Product Usage Instructions
- 5 DIMENSION
- 6 HOW TO USE
- 7 MONITOR MENU
- 8 SET POINT
- 9 GROUP OF PUMPS
- 10 CONNECT
- 11 PRECAUTION
- 12 MORE INFORMATION
- 13 FAQ
- 14 Documents / Resources
  - 14.1 References
- 15 Related Posts



**DAB Esybox Mini 3 On Demand Constant Pressure Variable Speed Pump**



## Specifications

- **Max diameter:** 25 mm
- **Max torque:** 15 Nm
- **Priming time:** Max 5 min

## Product Information

DAB PUMPS is a leading manufacturer of high-quality pumps for various applications. With a global presence, DAB PUMPS offers a wide range of pumping solutions to meet different needs.

## Product Usage Instructions

### Fill the Pump:

Ensure the pump is properly filled with the appropriate fluid before operation.

### First Priming:

Perform the initial priming process to prepare the pump for operation. Follow the specific instructions provided in the user manual for priming.

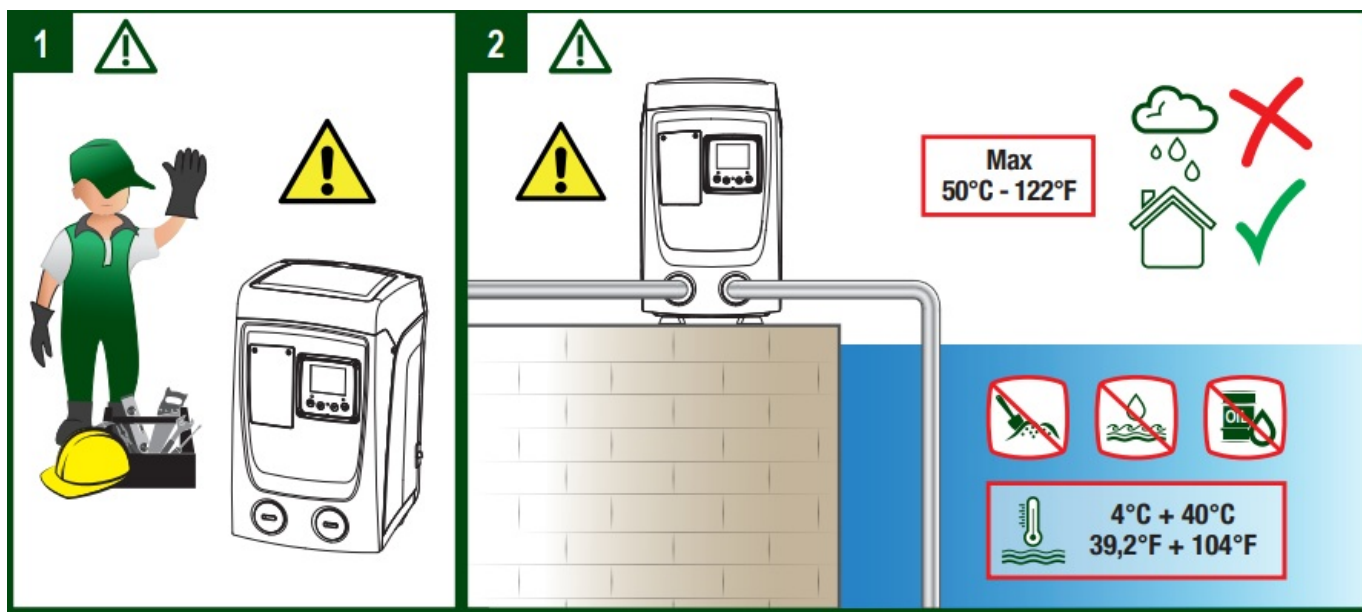
### Operating the Pump:

Switch the pump to the “ON” mode and monitor the pressure and flow rate indicators. Adjust settings as needed to achieve the desired performance.

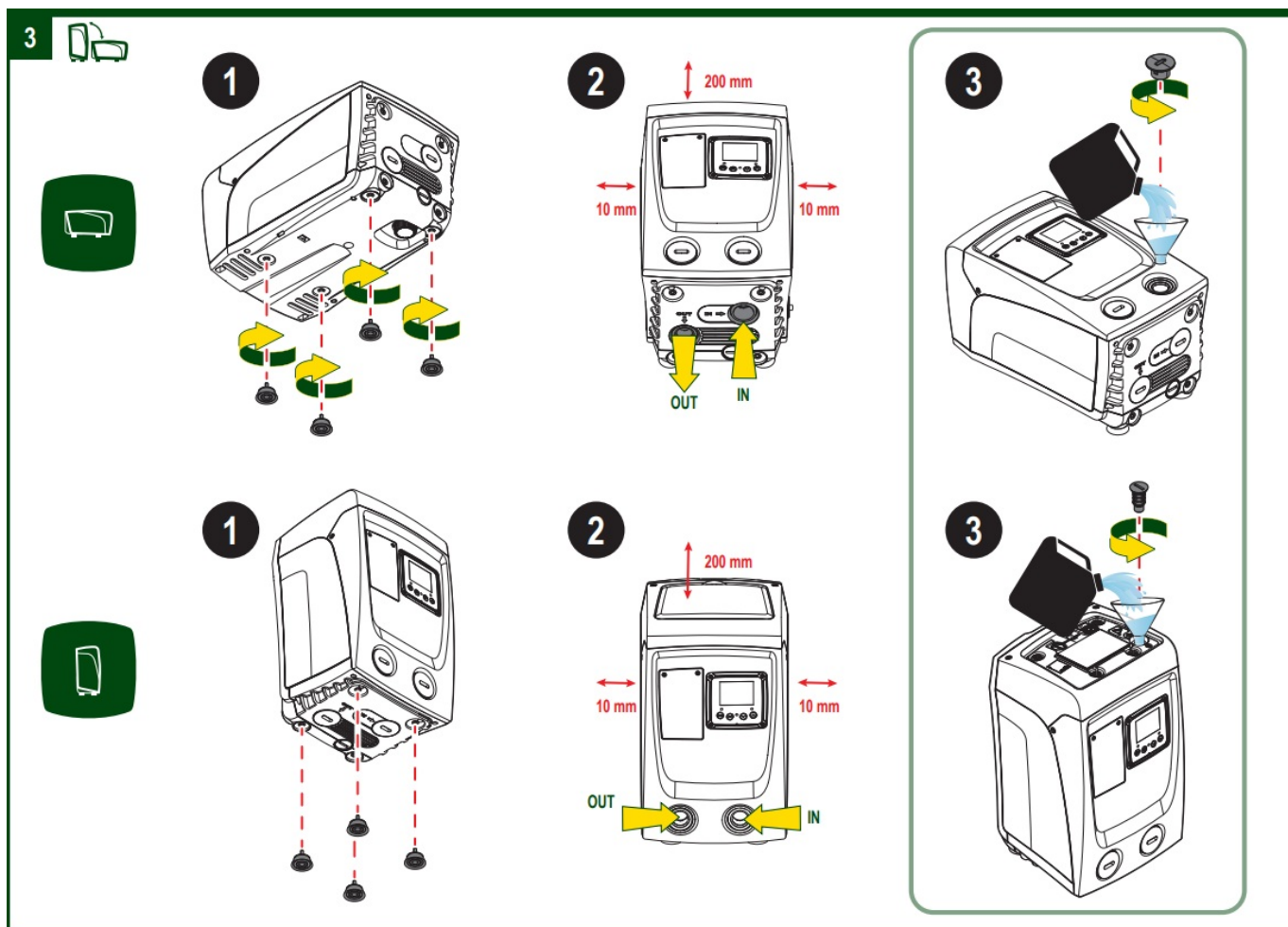
### Troubleshooting:

If any faults occur, refer to the fault display on the pump interface. Check for error messages and follow the recommended steps to address the issue.

## WARNING

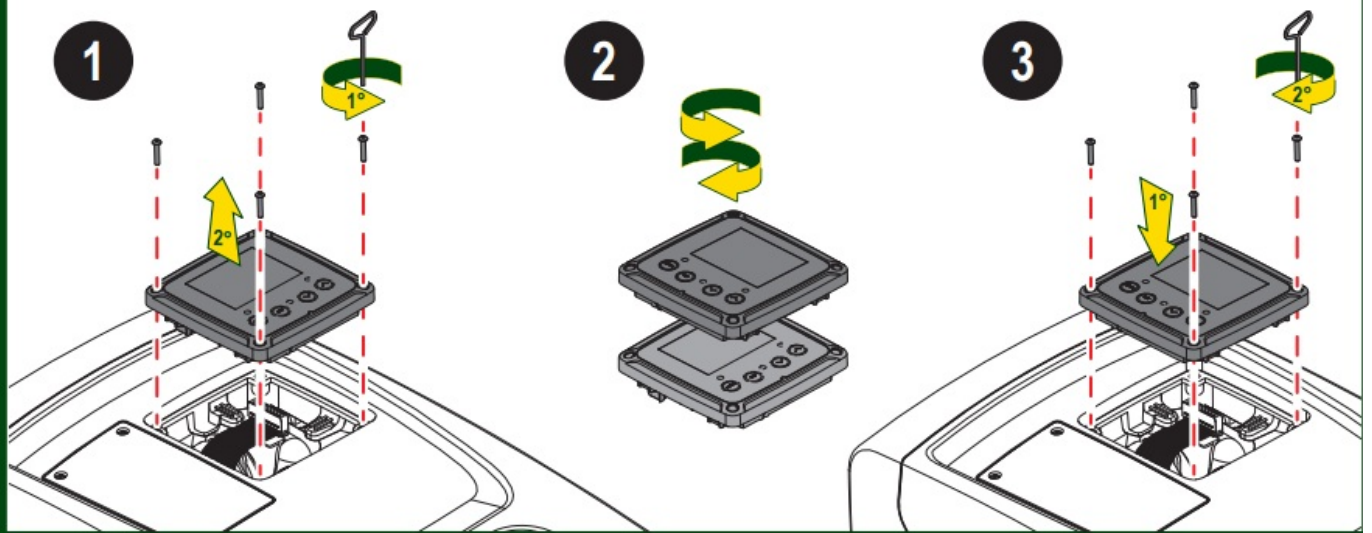


## DIMENSION

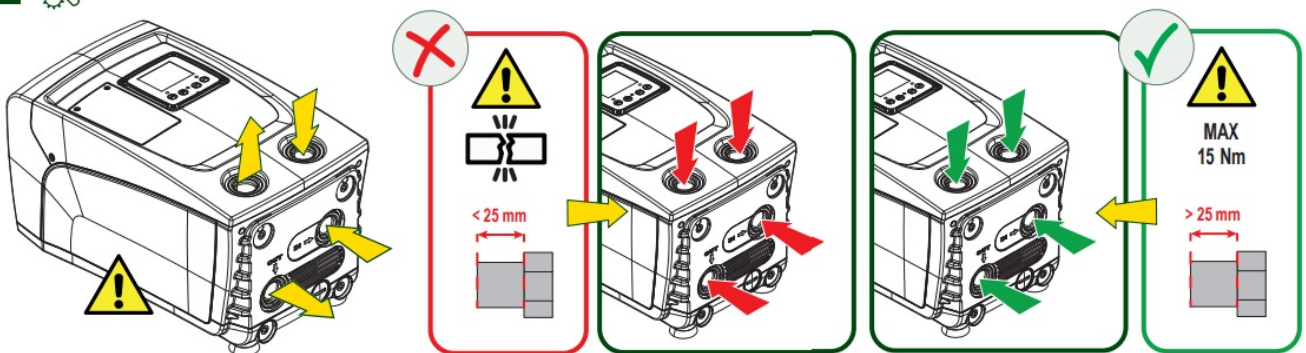


## HOW TO USE

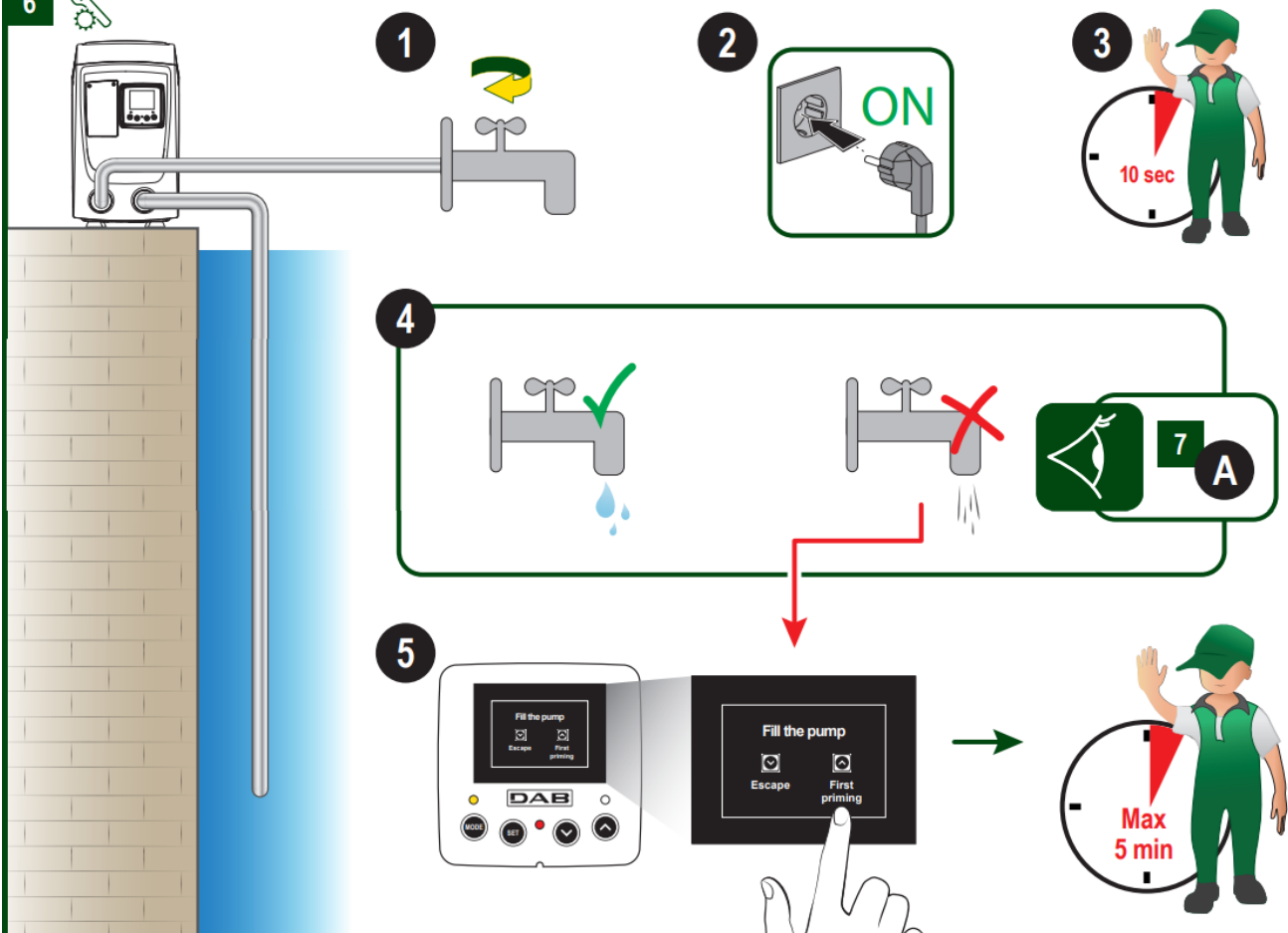
4



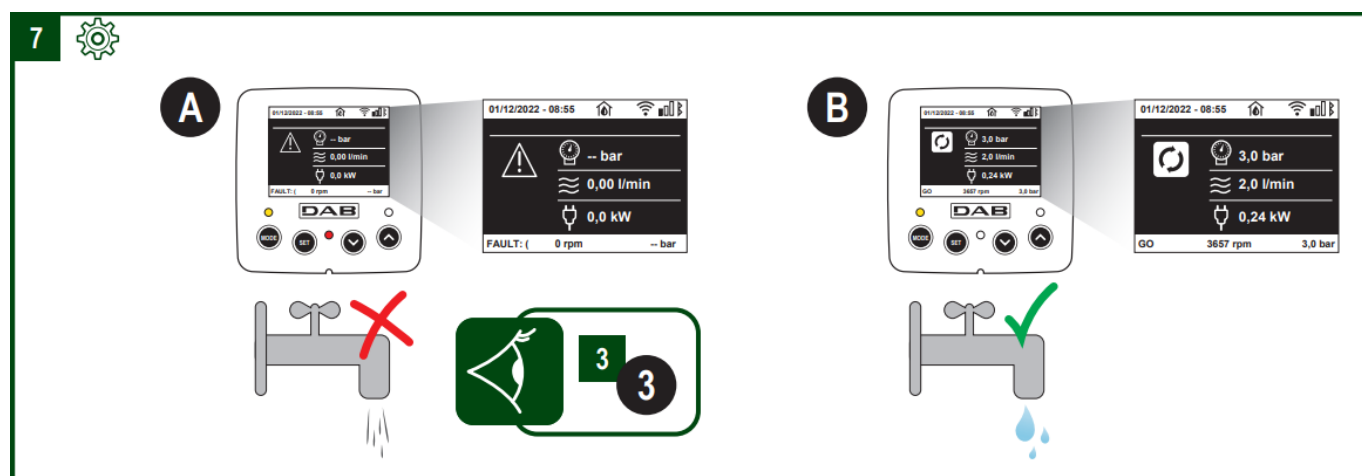
5



6

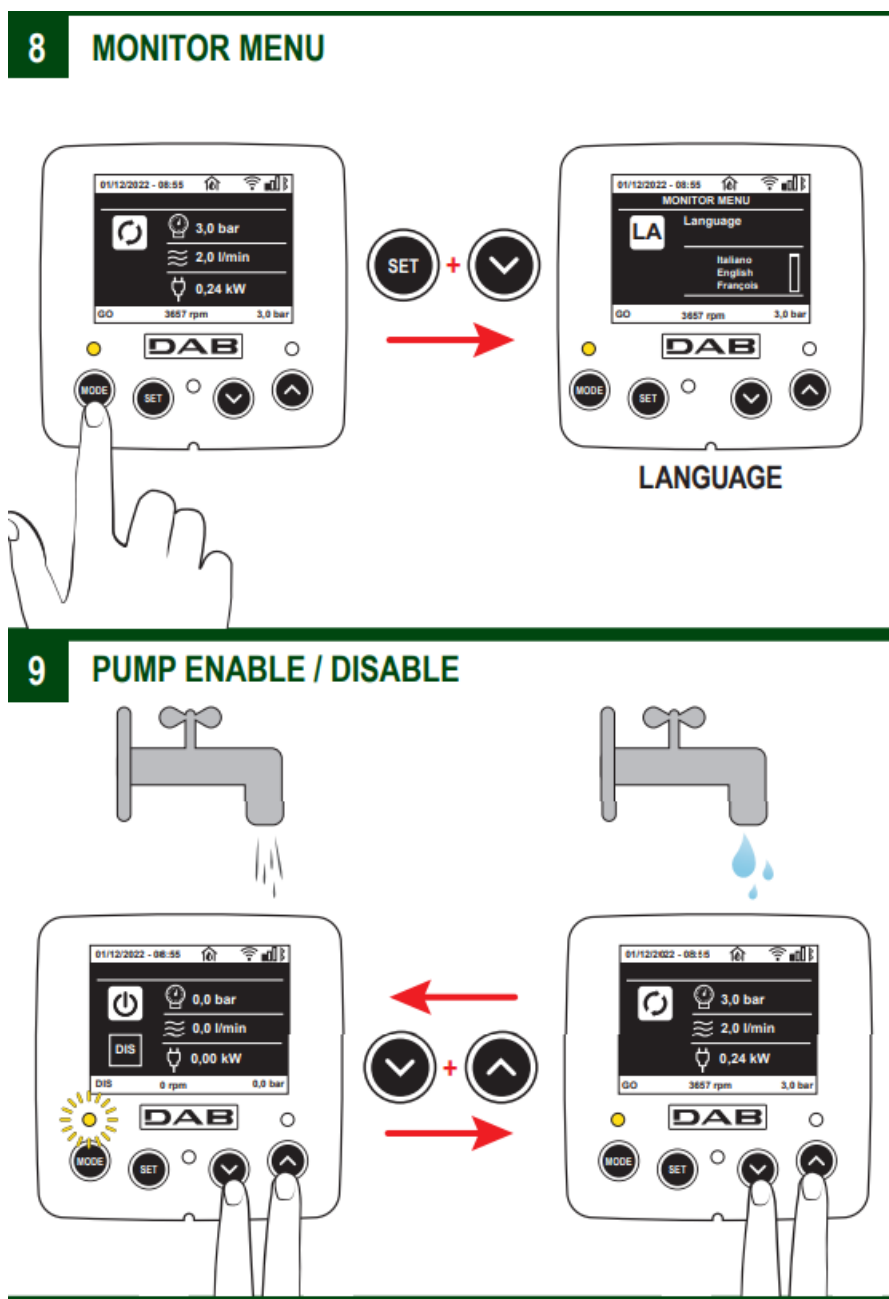


## SETTING

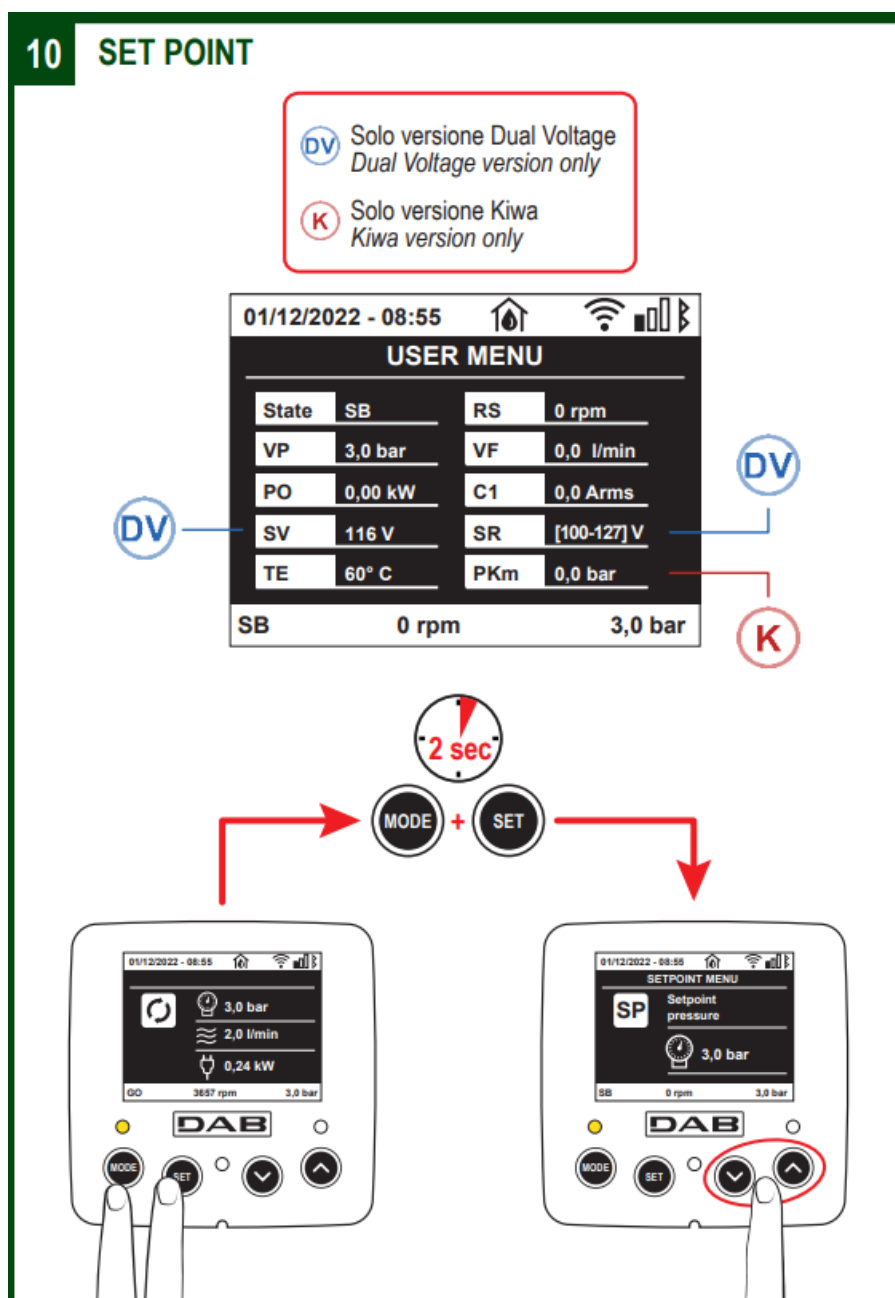


## MONITOR MENU

- PUMP ENABLE/DISABLE



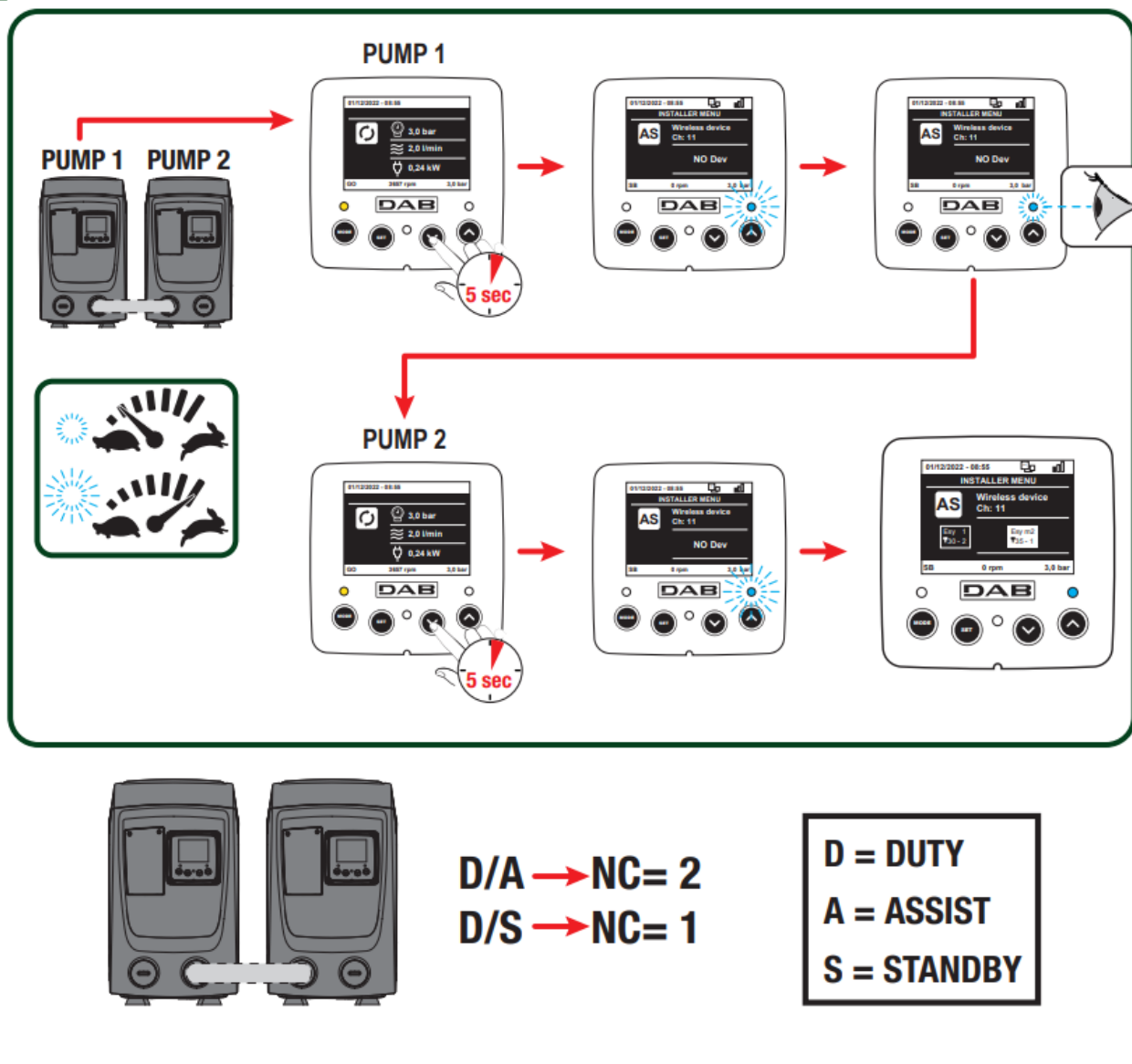
## SET POINT



## GROUP OF PUMPS



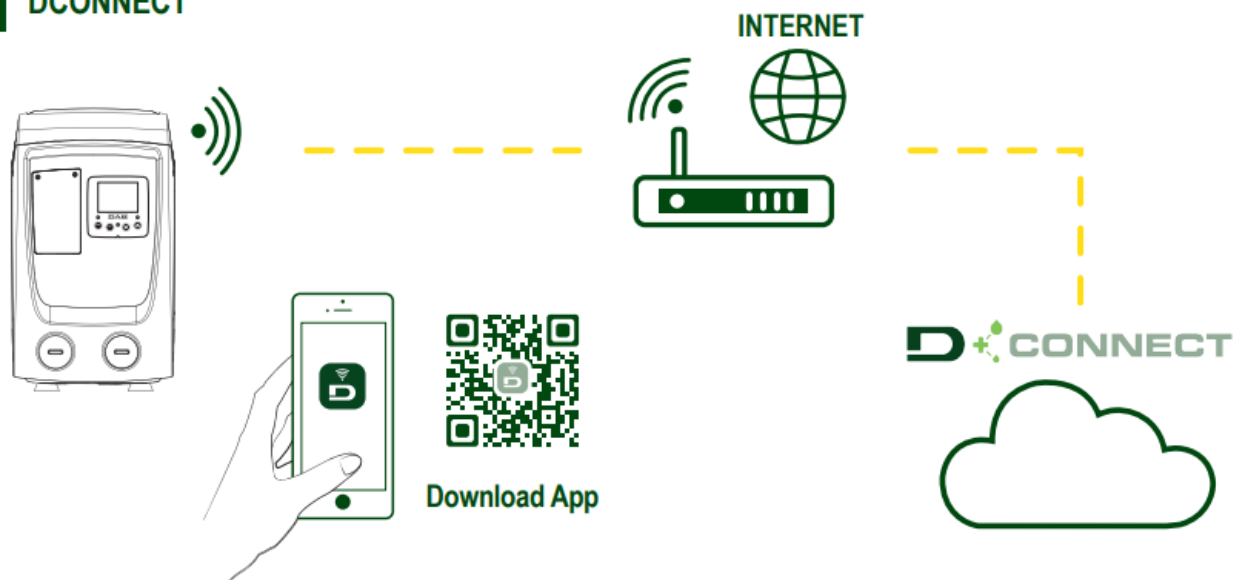
## 11 GROUP OF PUMPS



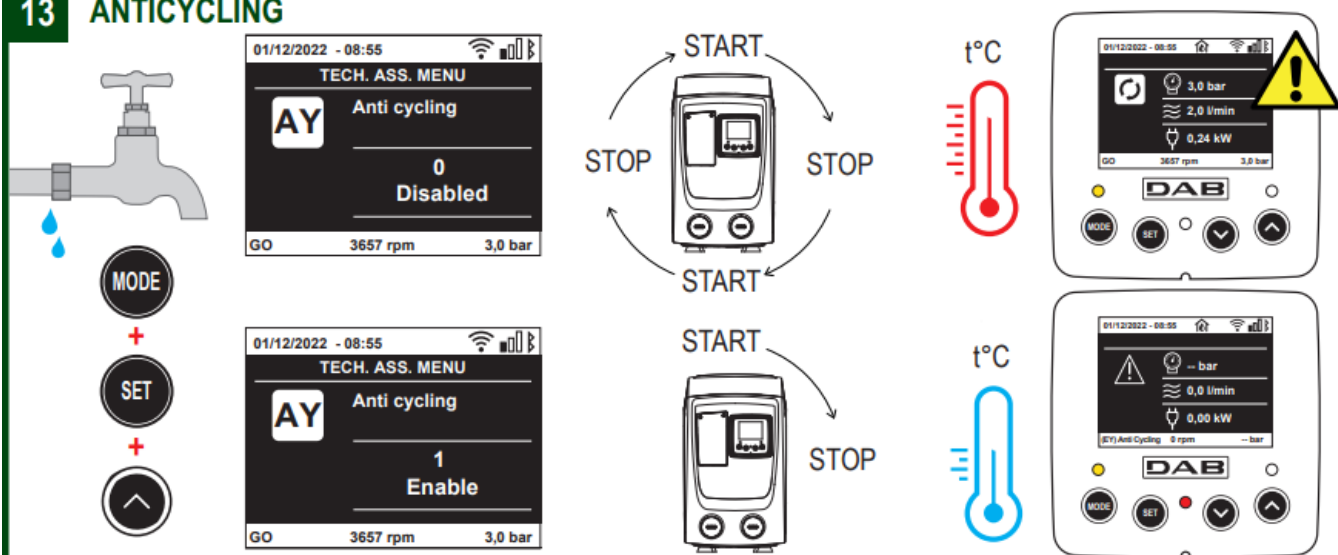
### CONNECT

- ANTICYCLING

## 12 DCONNECT



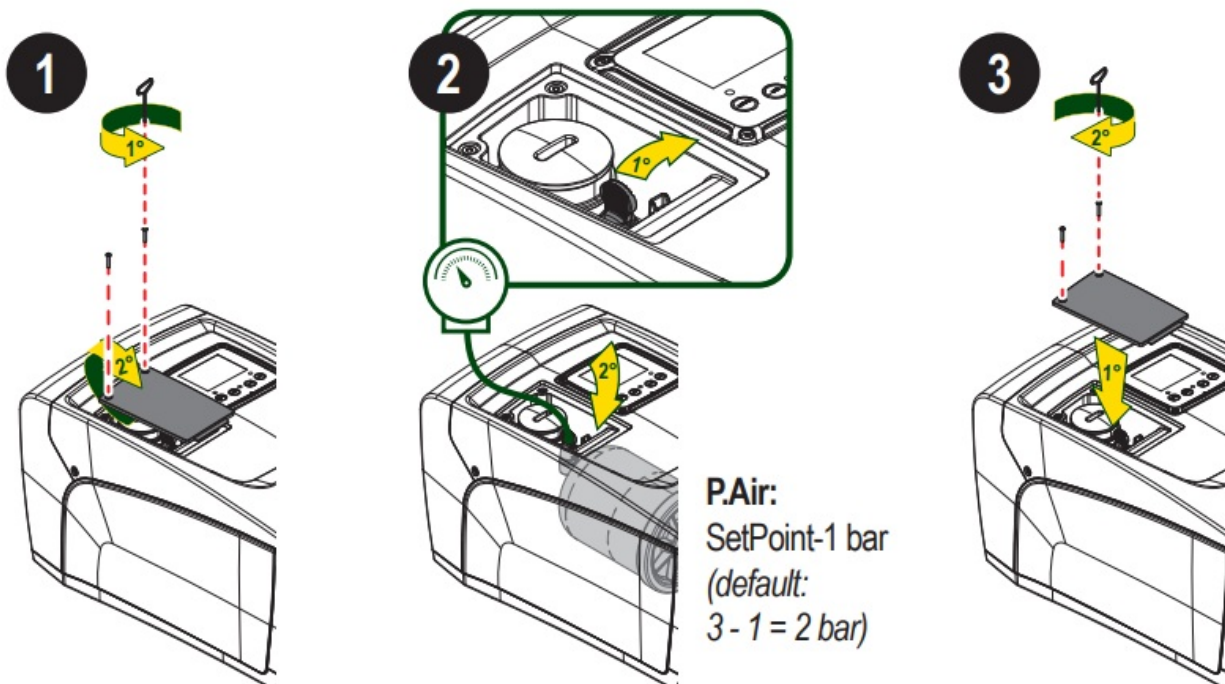
## 13 ANTICYCLING



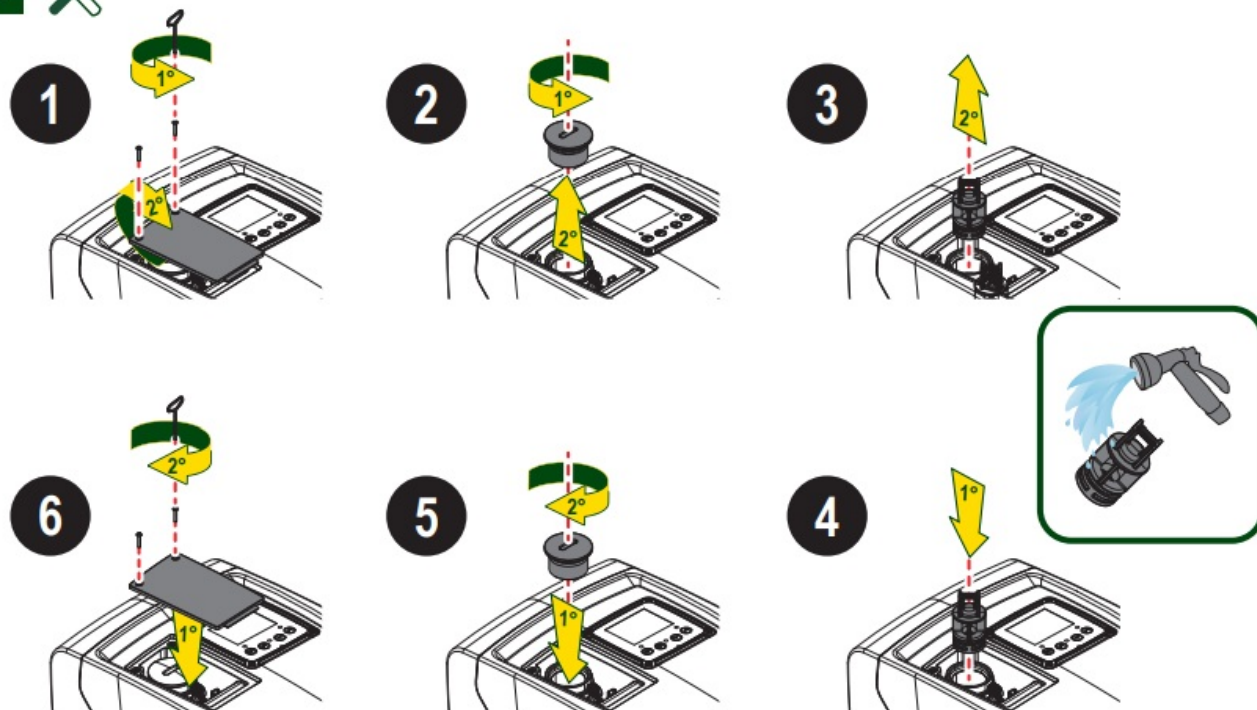
## PRECAUTION

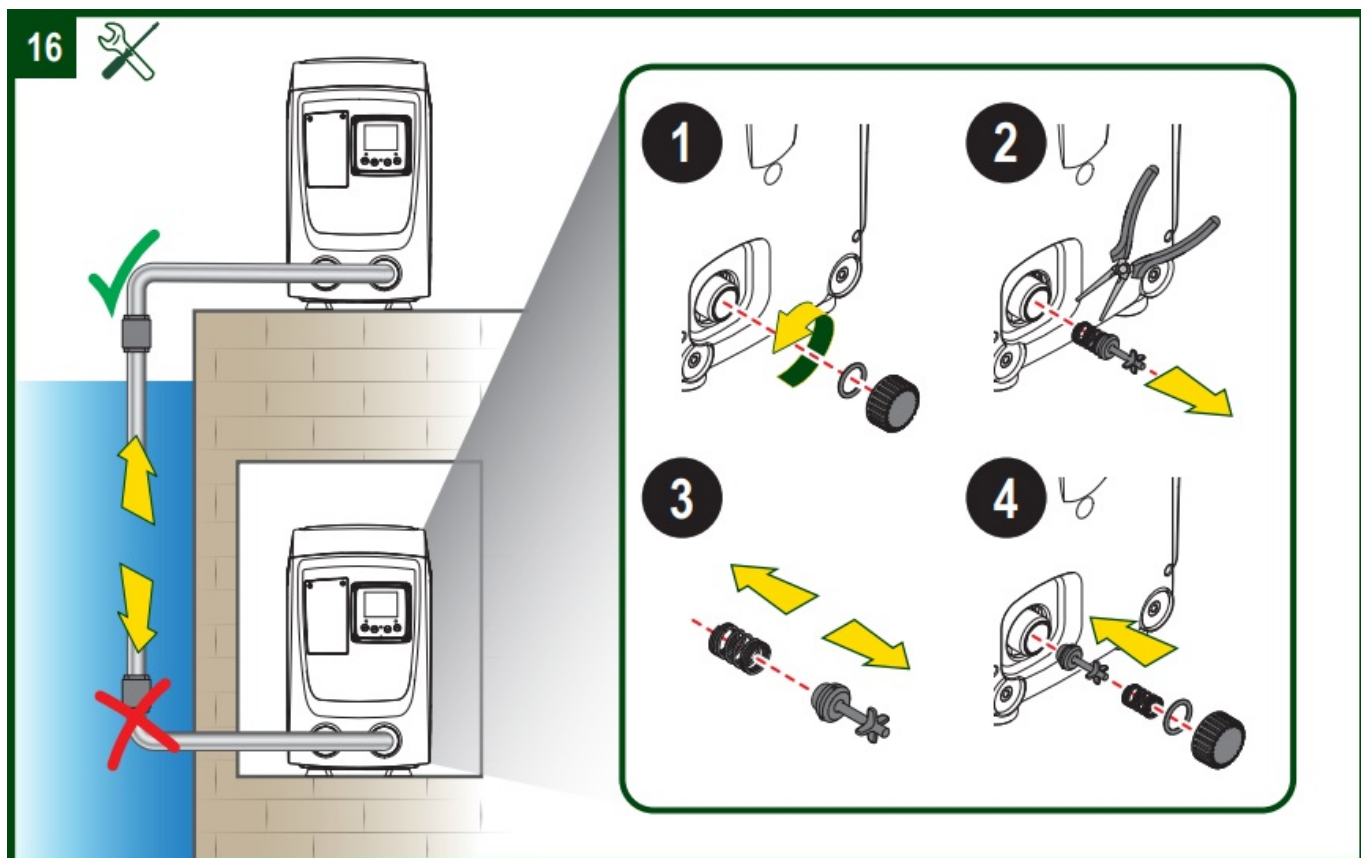


14



15





## SCANNER



## MORE INFORMATION

### DAB PUMPS LTD

- 6 Gilberd Court Newcomen Way
- Severalls Business Park
- Colchester, Essex C04 9WN – UK
- [salesuk@dwtgroup.com](mailto:salesuk@dwtgroup.com)
- Tel.: +44 0333 777 5010
- **ADDRESS:** DAB PUMPS S.p.A. Via M. Polo, 14 – 35035 Mestrino (PD)
- **Italy Tel.** +39 049 5125000 –
- **Fax** +39 049 5125950
- [www.dabpumps.com](http://www.dabpumps.com)

## FAQ

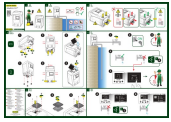
- **Q:** How do I contact DAB PUMPS for support?

- A: You can reach out to DAB PUMPS through their various regional offices listed in the user manual. Contact the office closest to your location for assistance.

- **Q: What should I do if the pump displays a fault?**

- A: When a fault is indicated, refer to the displayed error message for more information. Follow the troubleshooting steps outlined in the user manual to resolve the issue.

## Documents / Resources



[DAB Esybox Mini 3 On Demand Constant Pressure Variable Speed Pump](#) [pdf] User Guide Esybox Mini 3, Esybox Mini 3 On Demand Constant Pressure Variable Speed Pump, On Demand Constant Pressure Variable Speed Pump, Constant Pressure Variable Speed Pump, Pressure Variable Speed Pump, Variable Speed Pump, Speed Pump, Pump

## References

-  [Dab Pumps](#)
- [User Manual](#)

[Manuals+](#), [Privacy Policy](#)

This website is an independent publication and is neither affiliated with nor endorsed by any of the trademark owners. The "Bluetooth®" word mark and logos are registered trademarks owned by Bluetooth SIG, Inc. The "Wi-Fi®" word mark and logos are registered trademarks owned by the Wi-Fi Alliance. Any use of these marks on this website does not imply any affiliation with or endorsement.