




D P R C7500 Roll to Roll System Epson for Printers User Manual

[Home](#) » [D P R](#) » D P R C7500 Roll to Roll System Epson for Printers User Manual 



USER MANUAL
Roll to roll system
for EPSON printers

Please keep the original packaging in case you need to return the unit.
If we receive the system in non-original packaging, the warranty may be void.


Contents

- [1 APPLICATIONS](#)
- [2 POWER SUPPLY](#)
- [3 INSTALLATION](#)
- [4 HOW TO INSTALL THE PRINTER](#)
- [5 HOW TO OPEN THE CORE HOLDER](#)
- [6 WORKING CONDITIONS](#)
- [7 CONTROL PANEL](#)
- [8 Documents / Resources](#)
 - [8.1 References](#)
- [9 Related Posts](#)

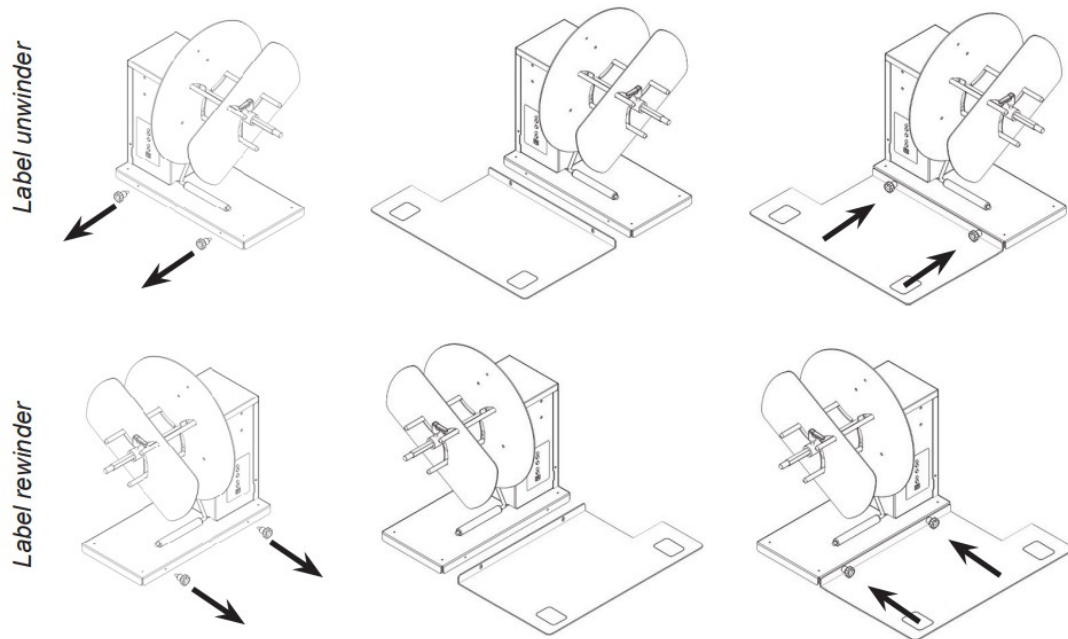
APPLICATIONS

Those units are used to rewind/unwind the labels coming from the input or output of Epson color label printer onto an adjustable core holder from 40mm (1.57") up to 118mm (4.64") or onto the 76mm (3") fixed core holder. The maximum label roll diameter is 250mm (9.84") while the maximum label width is 127mm (5").

POWER SUPPLY

An external power supply 100/240VAC  2.5A at 24V allows an electronic circuit to provide, through the tension arm, the speed and sense of rotation auto adjustment.

INSTALLATION



STEP 1

Unscrew the two knobs.

STEP 2

Set the UW/RW printer plate beside the corresponding unit's base.

STEP 3

Screw both plates with the two knobs.

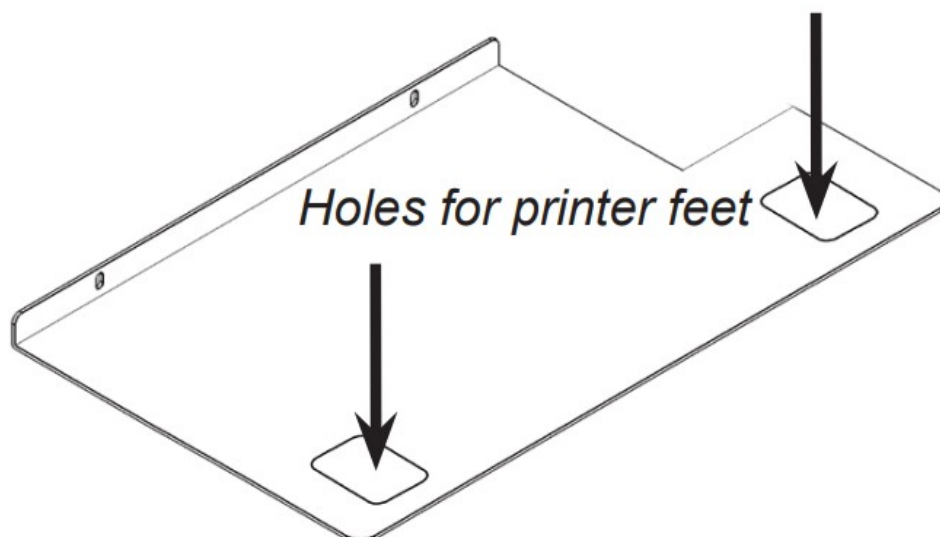
HOW TO INSTALL THE PRINTER

Insert the printer feet into the holes on printer plate.

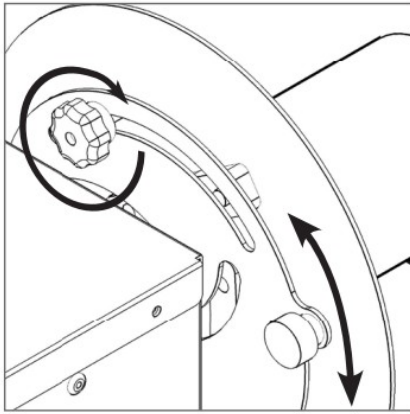
IMPORTANT

This specific printer plate is optional.

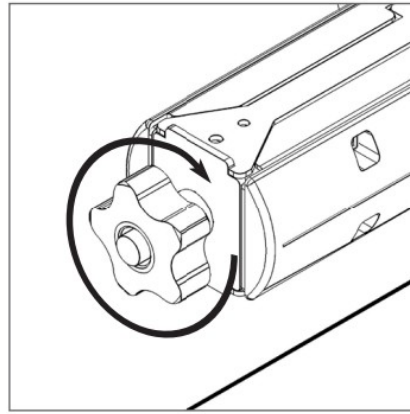
The standard plate has not the holes for the Epson C7500 printer.



HOW TO OPEN THE CORE HOLDER



Adjustable core holder



3" Fixed core holder

WORKING CONDITIONS

Label Unwinder:

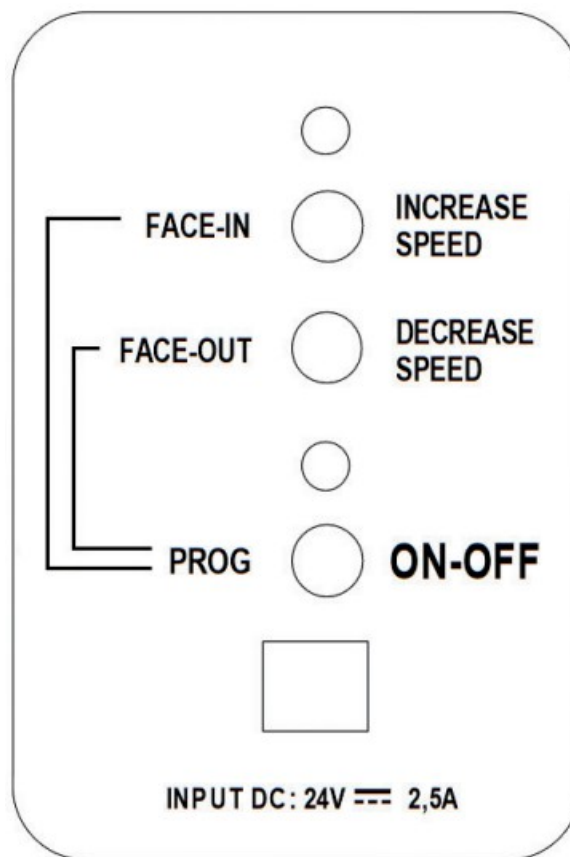
- When the printer forwards the media for printing, the tension arm goes up, the device unwinds the media. Yellow or green led on depending on the selected rewinding mode (face-in or face-out).
- When the tension arm is in the middle position, the device is idle. Both yellow and green leds on.
- When the printer backwards the media, the tension arm goes down, the device rewinds it. Yellow or green led on depending on the selected rewinding mode (face-in or face-out).

Label Rewinder:

- When the printer forwards the media for printing, the tension arm goes down, the device rewinds the media. Yellow or green led on depending on the selected rewinding mode (face-in or face-out).
- When the tension arm is in the middle position, the device is idle. Both yellow and green leds on.
- When the printer backwards the media, the tension arm goes up, the device unwinds it. Yellow or green led on depending on the selected rewinding mode (face-in or face-out).

When the unit is operating but the media is not loaded or it runs out, the tension arm reaches the lowest position and after few seconds the unit will stop by itself, both leds blink and it beeps.

CONTROL PANEL

**ON-OFF**

Push this button to turn On or Off the unit.

INCREASE SPEED

Push this button to increase the rotation speed.

DECREASE SPEED

Push this button to decrease the rotation speed.

LABEL FACE-OUT

Turn the unit off. Keep pushed "FACE OUT" button, push and release "ON-OFF" button while the green led turns on and off. The unit is now ready to operate.

LABEL FACE-IN

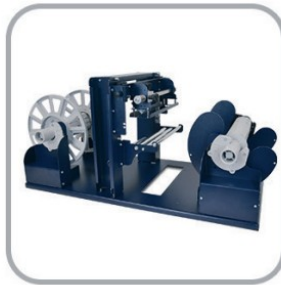
Turn the unit off. Keep pushed "FACE IN" button, push and release "ON-OFF" button while the yellow led turns on and off. The unit is now ready to operate.

SMART SOLUTIONS FUR THE LABELING INDUSTRY

Label rewinder, label unwinder, electronic label dispenser and more...



MATRIX REMOVER AND SLITTER



LONGITUDINAL LABEL SLITTER



EASY LABEL DISPENSER



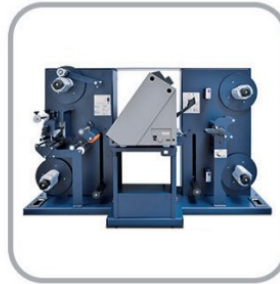
ELECTRONIC
LABEL DISPENSER



SCORPIO SERIES:
DIGITAL LABEL FINISHING SYSTEMS



GEMINI:
DIGITAL DIE CUTTER FOR SHEETS



VIRGO:
DESKTOP DIGITAL FINISHING SYSTEM



MOTORIZED CORE HOLDER
UNWINDER/REWINDER

– FOR MORE INFO CONTACT YOUR RESELLER –



Documents / Resources

	<p>D P R C7500 Roll to Roll System Epson for Printers [pdf] User Manual C7500 Roll to Roll System Epson for Printers, C7500, Roll to Roll System Epson for Printers, R oll System Epson for Printers, System Epson for Printers</p>
--	---

References

- [User Manual](#)

[Manuals+.](#) [Privacy Policy](#)

This website is an independent publication and is neither affiliated with nor endorsed by any of the trademark owners. The "Bluetooth®" word mark and logos are registered trademarks owned by Bluetooth SIG, Inc. The "Wi-Fi®" word mark and logos are registered trademarks owned by the Wi-Fi Alliance. Any use of these marks on this website does not imply any affiliation with or endorsement.