

**D-Link®  
M60 WiFi 6  
Smart Mesh  
Router**



## D-Link M60 WiFi 6 Smart Mesh Router User Guide

[Home](#) » [D-Link](#) » D-Link M60 WiFi 6 Smart Mesh Router User Guide 

### Contents

- [1 D-Link M60 WiFi 6 Smart Mesh Router](#)
- [2 Product Information](#)
- [3 Product Usage Instructions](#)
- [4 How do I log in to the admin page of my M60 Wi-Fi 6 Smart Mesh Router?](#)
- [5 FAQ](#)
- [6 Documents / Resources](#)
  - [6.1 References](#)
- [7 Related Posts](#)

**D-Link®**

### D-Link M60 WiFi 6 Smart Mesh Router



## Product Information

### Specifications

- **Product Name:** M60 Wi-Fi 6 Smart Mesh Router
- **Wi-Fi Standard:** Wi-Fi 6
- **LAN Ports:** Multiple
- **Admin Interface:** Web-based
- **Default Admin Password:** Printed on the label sticker at the back of the router

### Product Usage Instructions

#### Login to Admin Page

1. Connect your computer or device to one of the router's LAN ports using an Ethernet cable or via Wi-Fi.
2. Open your web browser and enter <http://xxx.devicesetup.net/> (replace xxx with the last 4 digits of the MAC address).
3. Enter the Admin Password (default password is on the device label) and click login to start the configuration process.
4. If you have changed the password and cannot remember it, reset the router to factory defaults.
5. Go to System Admin under Management, then click System. If the domain address does not work, try accessing the admin page via the IP address (default is 192.168.0.1).

#### Finding IP Address of D-Link Router

To find the IP address of your D-Link router in Windows OS, follow these steps:

1. Open Command Prompt.
2. Type `ipconfig /all` and press Enter.
3. Look for the Default Gateway under the network adapter connected to your router; this is your router's IP address.

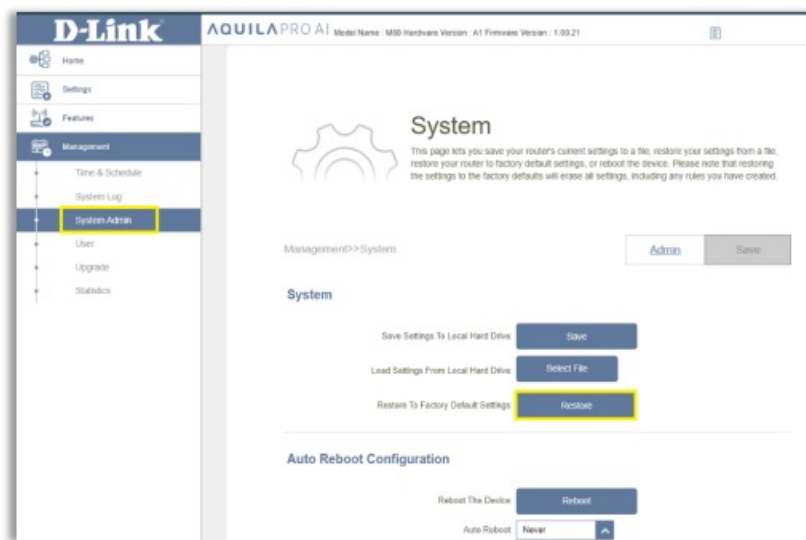
#### How do I log in to the admin page of my M60 Wi-Fi 6 Smart Mesh Router?

1. 1 Connect your computer or device to one of the router's LAN ports using another ethernet cable or via Wi-Fi (By default, Password located on the label sticker at the back of the router)
2. 2 If this is your first time installing the router, open your web browser and enter <http://xxx.devicesetup.net/> into the browser (xxx represents the last 4 digits of the MAC address). Enter the Admin Password and click login to start the configuration process. The web address and default admin password are printed on the device label at the bottom of the device.

**NOTE:** If you have changed the password and cannot remember it, you will need to reset the router to factory defaults.



3. Go to System Admin under Management, then Click System
4. If the domain address does not work, try accessing the router's admin page via the IP address. Typically, the default is 192.168.0.1, but this can change depending on your network configuration



### How to find the IP address of your D-Link router using Command Prompt in Windows OS:

- Press Win + R on your keyboard to open the Run dialog.
- Type CMD and press enter to open the command prompt.
- Run the command window, type ipconfig and press enter.
- Find the Default Gateway entry in the command output. This is the IP address of your Router.

```
Microsoft Windows [Version 10.0.22631.3007]
(c) Microsoft Corporation. All rights reserved.

C:\Users\jasmi>ipconfig

Windows IP Configuration

Ethernet adapter Ethernet:

    Media State . . . . . : Media disconnected
    Connection-specific DNS Suffix  . :

Wireless LAN adapter Local Area Connection* 1:

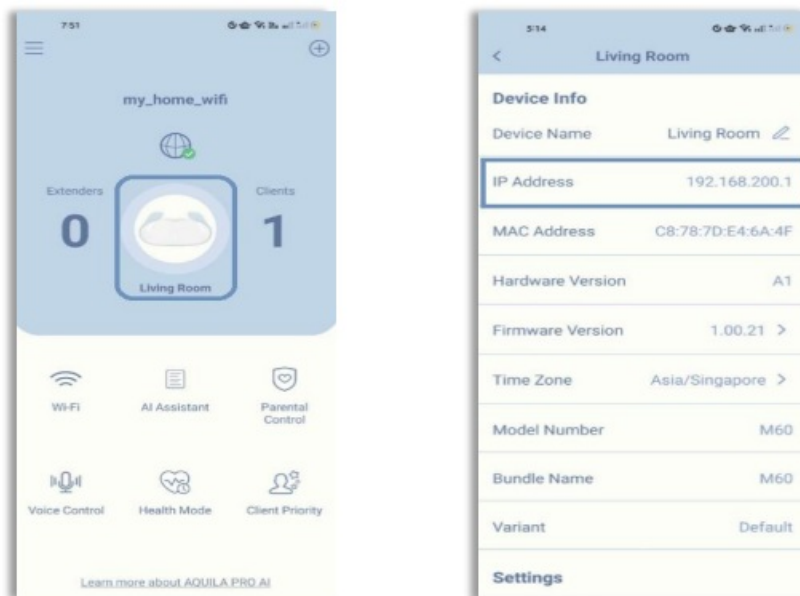
    Media State . . . . . : Media disconnected
    Connection-specific DNS Suffix  . :

Wireless LAN adapter Wi-Fi:

    Connection-specific DNS Suffix  . :
    Link-local IPv6 Address . . . . . : fe80::6d5d:85cc:41ff:f5cb%11
    IPv4 Address. . . . . : 192.168.200.230
    Subnet Mask . . . . . : 255.255.255.0
    Default Gateway . . . . . : 192.168.200.1
```

You can also find the IP address in the app (AQUILA PRO AI app)

- Open the AQUILA PRO AI app.
- Tap your device (M60)
- Look for IP address



## FAQ


### How do I reset my M60 Wi-Fi 6 Smart Mesh Router to factory defaults?

To reset the router to factory defaults, locate the reset button (usually at the back) and press it for about 10 seconds until the router restarts.

### What should I do if I forget my custom admin password?

If you forget your custom admin password, you will need to reset the router to factory defaults as described above.

## Documents / Resources

	<p><a href="#">D-Link M60 WiFi 6 Smart Mesh Router</a> [pdf] User Guide M60, M60 WiFi 6 Smart Mesh Router, M60 WiFi 6, WiFi 6 Router, Smart Mesh Router, M60 Router, Router, Smart Router, Mesh Router</p>
---	--

## References

- [Device Setup Instructions](#)
- [User Manual](#)

[Manuals+.](#) [Privacy Policy](#)

This website is an independent publication and is neither affiliated with nor endorsed by any of the trademark owners. The "Bluetooth®" word mark and logos are registered trademarks owned by Bluetooth SIG, Inc. The "Wi-Fi®" word mark and logos are registered trademarks owned by the Wi-Fi Alliance. Any use of these marks on this website does not imply any affiliation with or endorsement.