

D-Link

D-Link M60 AX6000
WiFi 6 Smart Mesh
Router



D-Link M60 AX6000 WiFi 6 Smart Mesh Router User Guide

[Home](#) » [D-Link](#) » D-Link M60 AX6000 WiFi 6 Smart Mesh Router User Guide 

Contents

- [1 D-Link M60 AX6000 WiFi 6 Smart Mesh Router](#)
- [2 Specifications](#)
- [3 Quick Start Guide](#)
- [4 TOOLS](#)
- [5 FAQs](#)
- [6 Documents / Resources](#)
 - [6.1 References](#)
- [7 Related Posts](#)

D-Link

D-Link M60 AX6000 WiFi 6 Smart Mesh Router



Specifications

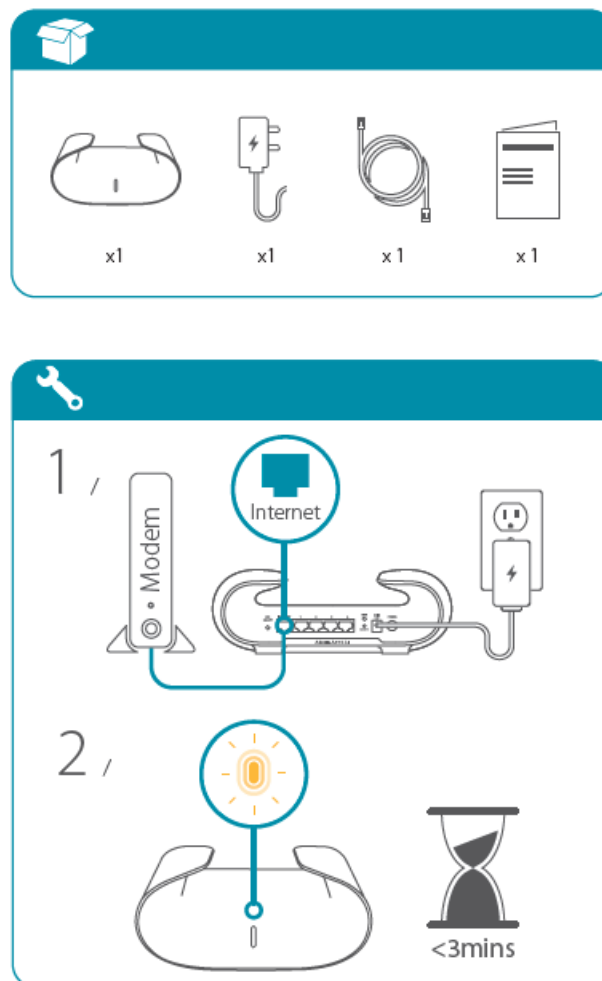
- **Wi-Fi Speed:** AX6000 (Up to 6 Gbps)
- **Bands:** Dual-band (2.4 GHz and 5 GHz)
- **Ports:** 1 x 2.5 Gbps WAN, 4 x Gigabit LAN
- **Mesh Expansion:** Can add more units to increase coverage.
- **Security:** WPA3, parental controls, IoT cybersecurity

Quick Start Guide

M60

AX6000 Wi-Fi 6 Smart Mesh Router

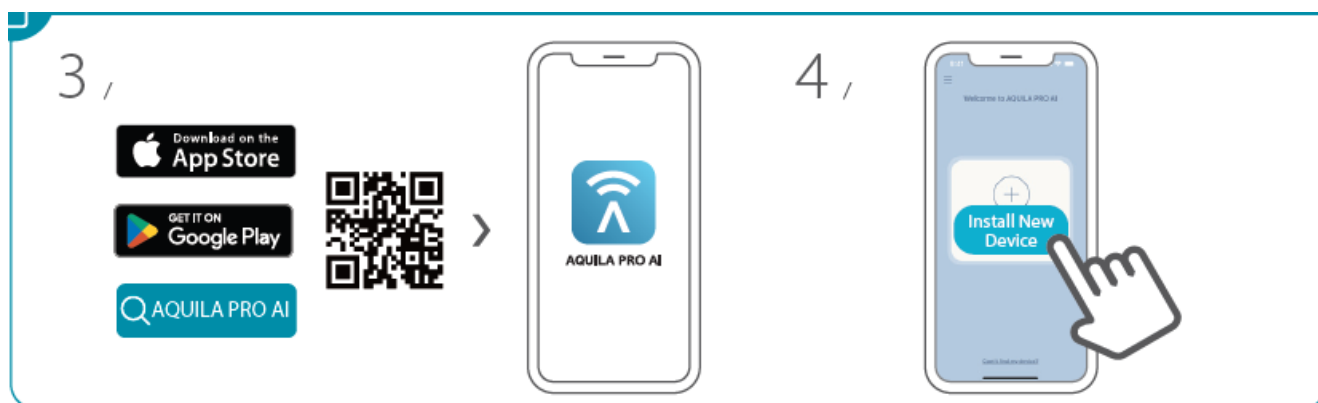
TOOLS



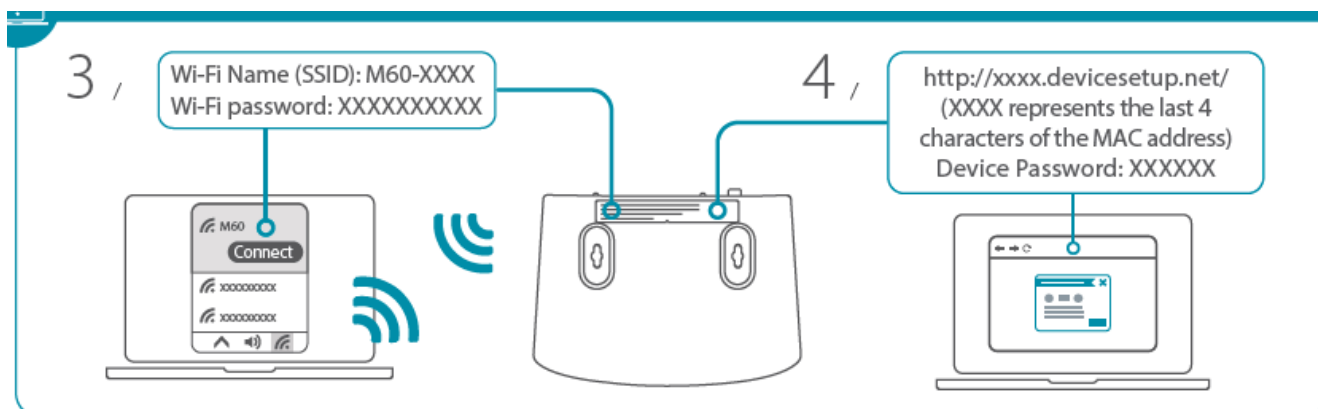
<https://eu.dlink.com/support>

GPL Information <https://tsd.dlink.com.tw/GPL>

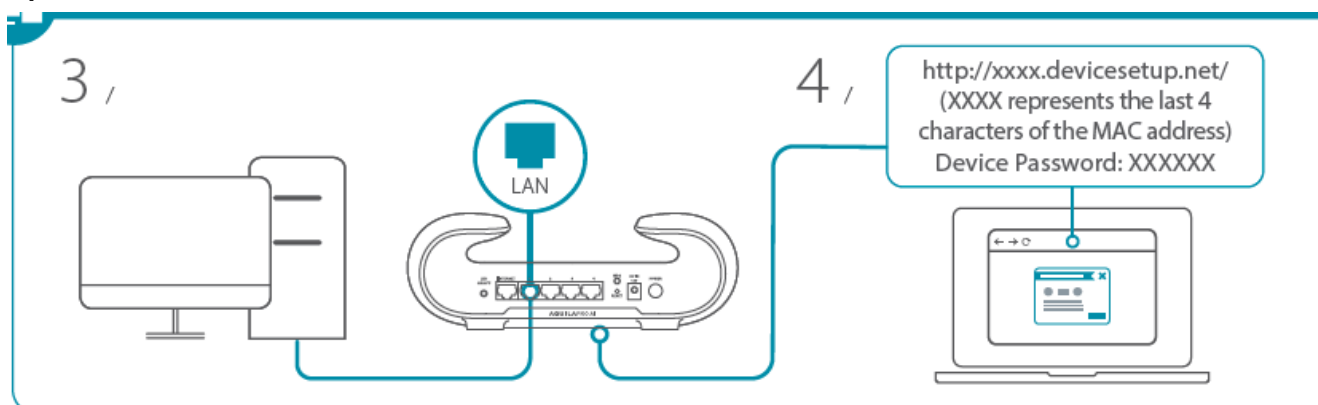
1. Option 1



2. Option 2



3. Option 3



2024/04/09_105x148 v1.00(EU) 4GIM60ZZDLEU1XX

FAQs

1. Can I expand the network with more units?

Yes, you can expand the M60 mesh network by adding more units to cover a larger area, such as multi-story homes or large open spaces D-Link Shop Canada D-Link International Pte Ltd .

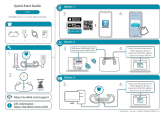
2. What devices are compatible with this router?

The M60 is compatible with all Wi-Fi-enabled devices, including smartphones, laptops, and smart home devices. It is particularly beneficial for devices that support Wi-Fi 6 Dong Knows Tech .

3. How do I set up the M60 router?

The setup is straightforward using the D-Link Aquila Pro AI app, which guides you through the process step-by-step. More advanced configuration options are available through the web interface D-Link International Pte Ltd.

Documents / Resources



[D-Link M60 AX6000 WiFi 6 Smart Mesh Router](#) [pdf] User Guide

M60, M60 AX6000 WiFi 6 Smart Mesh Router, M60, AX6000 WiFi 6 Smart Mesh Router, WiFi 6 Smart Mesh Router, Smart Mesh Router, Mesh Router, Router

References

- [🌐 Device Setup Instructions](#)
- [▶ D-Link | Technical Support | GPL Source Code Support](#)
- [User Manual](#)

Manuals+, [Privacy Policy](#)

This website is an independent publication and is neither affiliated with nor endorsed by any of the trademark owners. The "Bluetooth®" word mark and logos are registered trademarks owned by Bluetooth SIG, Inc. The "Wi-Fi®" word mark and logos are registered trademarks owned by the Wi-Fi Alliance. Any use of these marks on this website does not imply any affiliation with or endorsement.