



D-Link M32 AX3200 Mesh Router Installation Guide

[Home](#) » [D-Link](#) » D-Link M32 AX3200 Mesh Router Installation Guide 

D-Link M32 AX3200 Mesh Router Installation Guide



Contents

- [1 What's in the Box](#)
- [2 Setup Code](#)
- [3 Installation](#)
- [4 Quick Extender Setup](#)
- [5 FAQ](#)
- [6 GPL Code Statement](#)
- [7 FCC Warning](#)
- [8 Technical Support](#)
- [9 Documents / Resources](#)
 - [9.1 References](#)
- [10 Related Posts](#)

What's in the Box

- M32 || AX3200 Mesh Router
- Power Adapter
- Ethernet Cable
- Quick Installation Guide

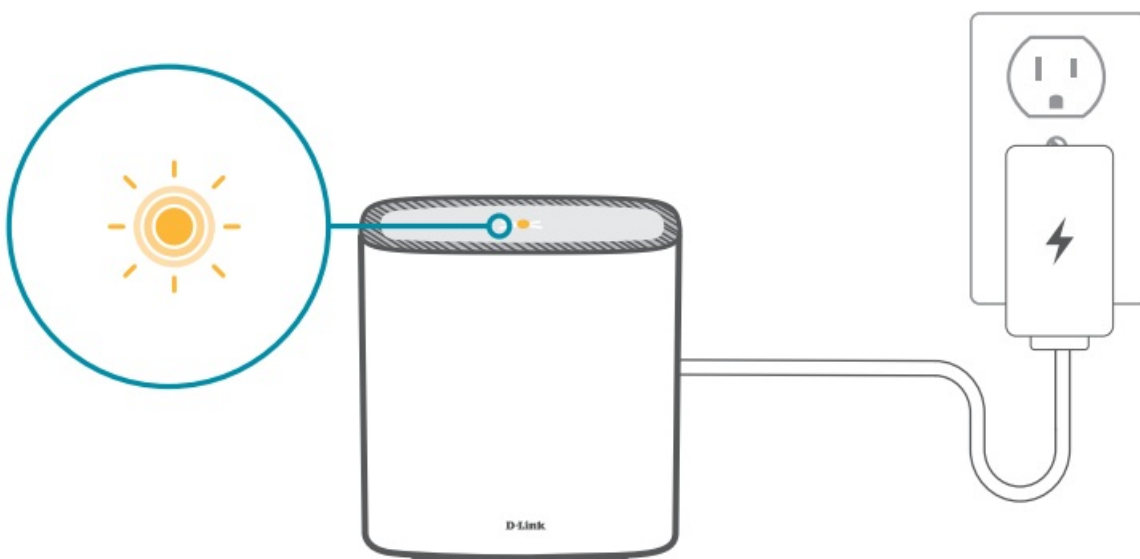
Setup Code



This is a backup of your device's Setup Code. Please keep it as future reference for your device.

Installation

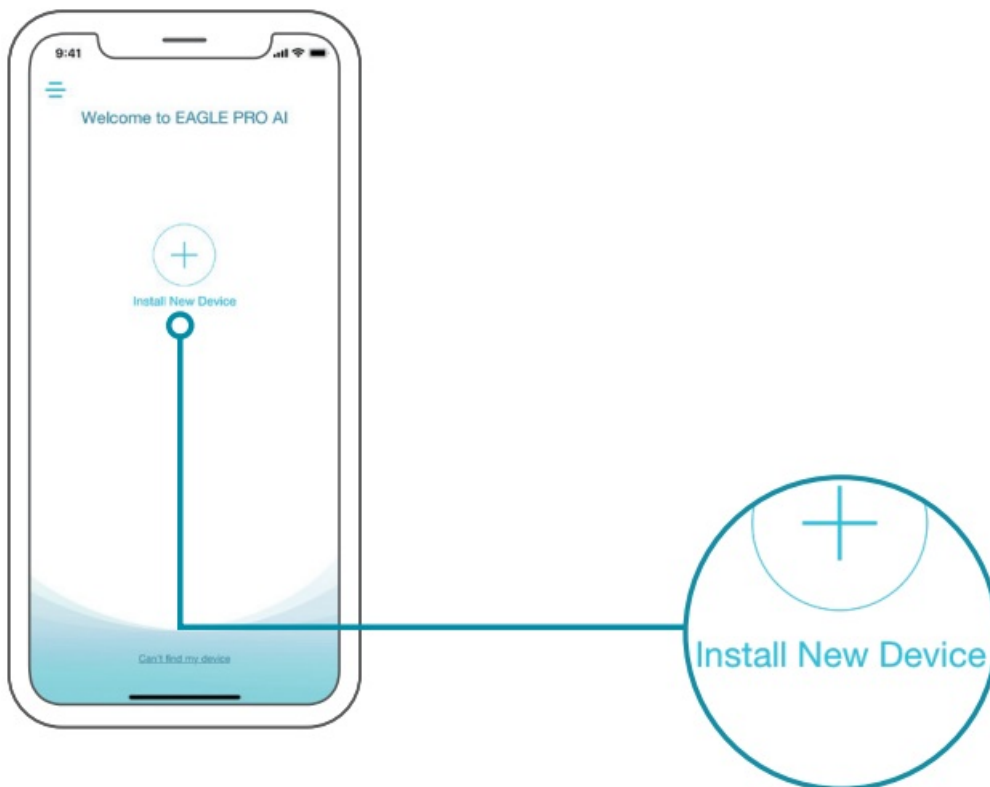
1. Plug the router into a power source. Wait for the status LED to flash orange.



2. Download the EAGLE PRO AI app and launch it.



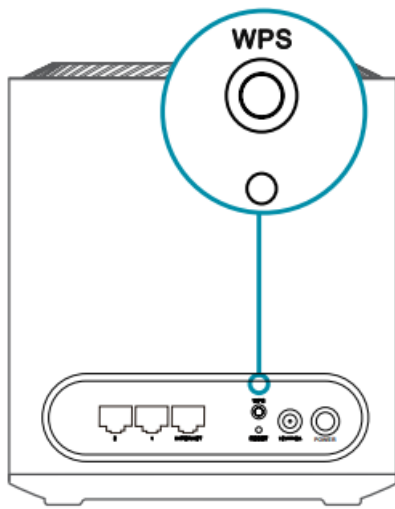
3. Tap Install New Device. Scan the Setup code. Follow the on-screen instructions to complete the setup.



You're all good to go! Connect devices to your network using the Wi-Fi Name (SSID) and Wi-Fi Password that you created during the setup process. Enjoy the Internet!

Quick Extender Setup

You can easily pair your device with any router to extend your wireless coverage.



1. Plug the M32 into a power source near your wireless router. Wait for the status LED to flash orange.
2. Press the WPS button on your router for 3 seconds. Refer to your router's manual for router behaviour.
3. Press the WPS button on your M32 for 3 seconds. The status LED should start to flash white.
4. When the status LED turns solid white (may take up to 3 minutes), this indicates that your M32 is connected to your wireless router.

IMPORTANT

WPS may be disabled on some Routers or Modems. If the WPS Status LED on your Router or Modem does not start blinking when you have pressed the WPS button, try again and hold it a little longer. If it still does not blink, STOP, and configure your M32 using EAGLE PRO AI App Setup.

FAQ

Why can't I access the web-based configuration utility?

Verify that <http://WXYZ.devicesetup.net/> has been correctly entered into the browser (WXYZ represents the last 4 characters of the MAC address). The Wi-Fi Name(SSID), Wi-Fi Password, and device password are printed on the Quick Installation Guide and on the device label.

Why can't I access the Internet?

Power cycle your router and check your Internet access again. If you still can not connect to the Internet, contact your Internet service provider.

What do I do if I forgot my device password or my Wi-Fi Password?

If you forgot your password, you must reset your router. This process will change all your settings back to the factory defaults.

How do I restore the router to its factory default settings?

Locate the reset button. With the router powered on, use a paper clip to hold the button down until the LED turns solid red. Release the button and the router will go through its reboot process.

GPL Code Statement

This D-Link product includes software code developed by third parties, including software code subject to the GNU General Public License ("GPL") or GNU Lesser General Public License ("LGPL"). As applicable, the terms of the GPL and LGPL, and information on obtaining access to the GPL code and LGPL code used in this product, are available to view the full GPL Code Statement at:

<https://tsd.dlink.com.tw/GPL>

The GPL code and LGPL code used in this product is distributed WITHOUT ANY WARRANTY and is subject to the copyrights of one or more authors. For details, see the GPL code and the LGPL code for this product and the terms of the GPL and LGPL.

Written Offer for GPL and LGPL Source Code

Where such specific license terms entitle you to the source code of such software, D-Link will provide upon written request via email and/or traditional paper mail the applicable GPL and LGPL source code files via CD-ROM for a nominal cost to cover shipping and media charges as allowed under the GPL and LGPL.

Please direct all inquiries to:

Snail Mail:

Attn: GPLSOURCE REQUEST
D-Link Systems, Inc.
14420 Myford Road, Suite 100
Irvine, CA 92606

Email:

GPLCODE@dlink.com

FCC Warning

This device complies with Part 15 of the FCC Rules. Operation is subject to the following two conditions:

1. The device may not cause harmful interface, and
2. this device must accept any interface received, including interface that may cause undesired operation.

Technical Support

Having trouble installing your new product? D-Link's website contains the latest user documentation and software updates for D-Link products. Customers can contact D-Link Technical Support through our website by choosing the relevant region.

United States

Website: <http://support.dlink.com>

Telephone: (877) 453-5465

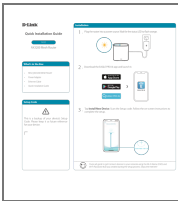
Canada

Website: <http://support.dlink.ca>

Telephone: (800) 361-5265

2021/07/21_90x130 v1.00(US) 4GICOX320DLUS1XX

Documents / Resources



[D-Link M32 AX3200 Mesh Router](#) [pdf] Installation Guide
M32, AX3200 Mesh Router, M32 AX3200 Mesh Router, Mesh Router, Router

References

- [D-Link Support](#)
- [D-Link Support](#)
- [D-Link AI Device Setup](#)
- [D-Link | Technical Support | GPL Source Code Support](#)