



D-Link Internet Connection Failover to 4G LTE USB Adapter Setup Instructions

[Home](#) » [D-Link](#) » D-Link Internet Connection Failover to 4G LTE USB Adapter Setup Instructions 

D-Link®

How to Setup Automatic

Internet Connection Failover to 4G LTE USB Adapter in DSR-1000AC / DSR-500AC

DSR-1000AC / DSR-500AC firmware ver. 3.17B302T

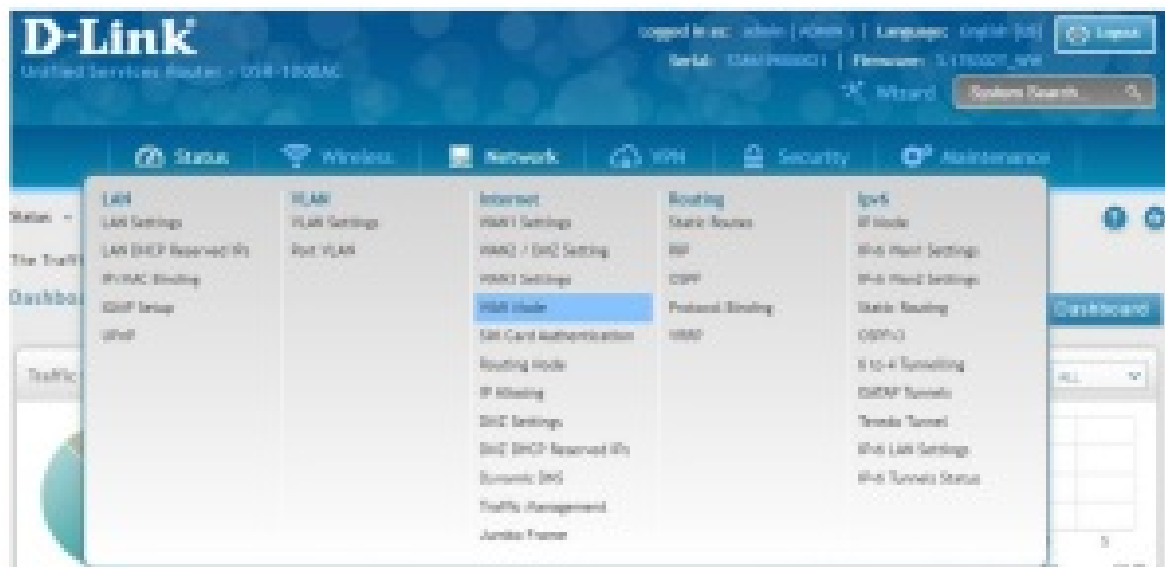


DSR-500AC / DSR-1000AC



DWM-222

Step 1. Go to Network > Internet > WAN Mode:



Under “WAN Mode” choose the “Auto Rollover using WAN port” option.

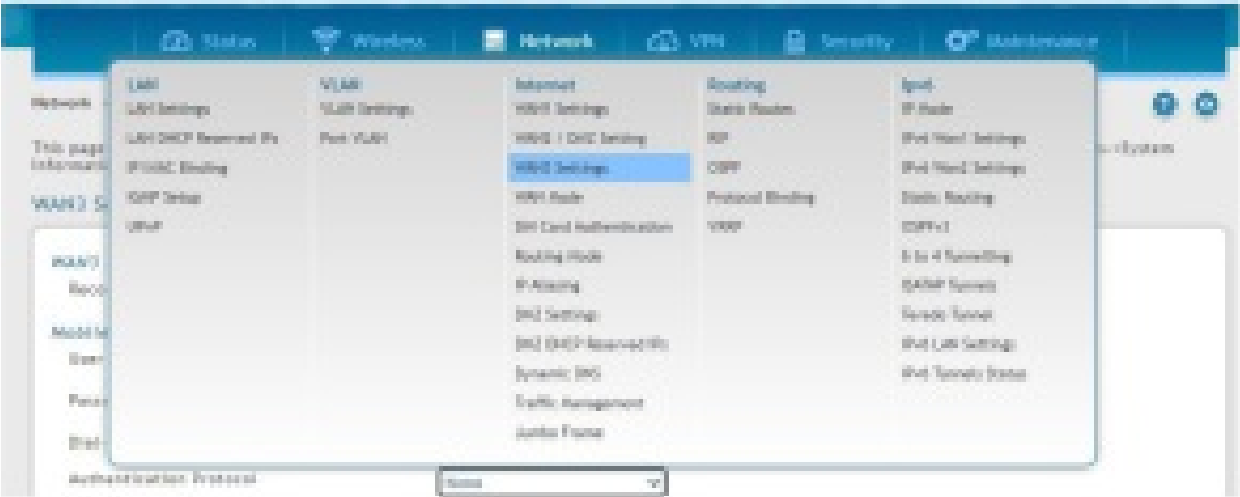
Make sure that “Use Primary WAN port” is set to “WAN1” (if your primary Internet link is connected to WAN1 of the router).

Set “Use Secondary WAN port” to “WAN3” (your USB 4G LTE adapter will be set as WAN3 in the next step).



Step 2. Plug compatible 3G/4G USB adapter into USB port 1 or port 2 of the router. The D-Link DWM-222 is recommended as a compatible adapter.

Go to Network > Internet> WAN3 Settings:



Configure your 3G/4G LTE connection with APN details given by your provider. In our example, we are using Telstra SIM.

WAN2 Settings

WAN2 (Mobile Internet)

Always On ☒ On Demand ☐

Mobile Internet Connection Type

User Name Optional

Password Optional

Dial-In Number

Authentication Protocol

APN Required ☒

APN

Remote Home System (DNS) Servers

DNS Server Source ☒ Get Dynamically from ISP ☐ Use These DNS Servers

Port Setup

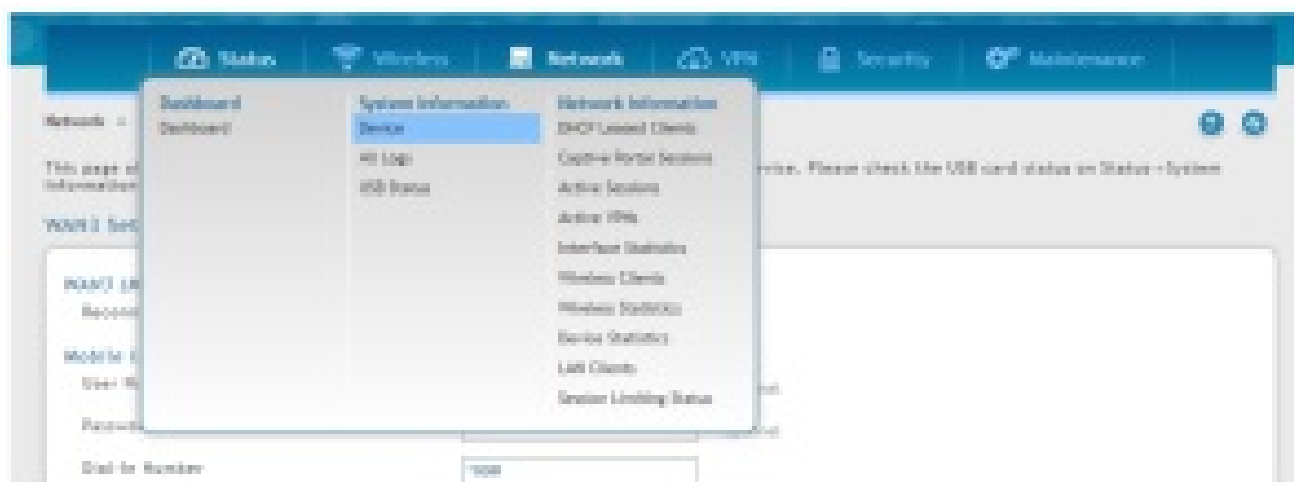
MTU Size ☒ Default ☐ Custom

Click on “Save”.

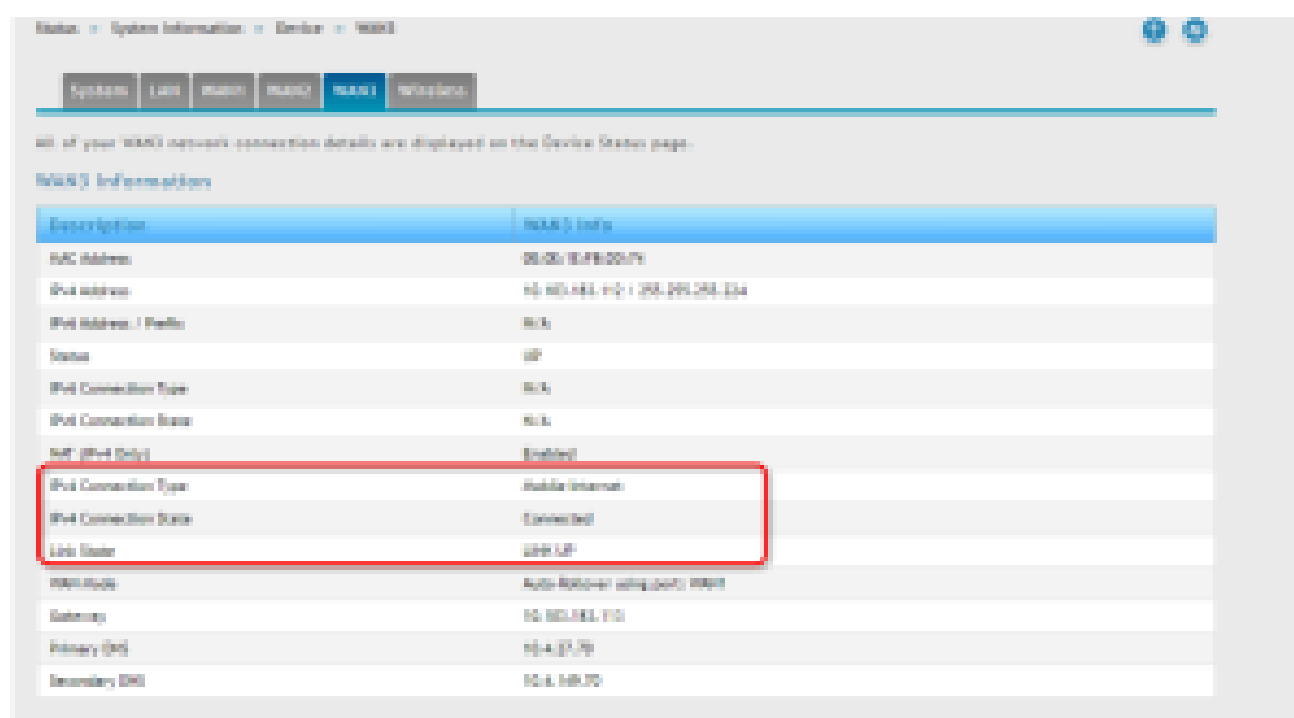
The setup is now complete.

To test your 3G/4G connectivity unplug your primary Internet connection from the router's WAN1. Wait for about 30 seconds and check if your Internet connection has been reestablished via the USB 3G/4G adapter:

Go to Status > System Information > Device



Check the WAN3 connection status:



End of Document




D-Link Technical Support
How to setup DSR-500AC / 1000AC with L2TP Service

Contents

- 1 Documents / Resources
- 2 Related Posts

Documents / Resources

 <p>How to Setup: Advanced Internet Connection Failover to 4G LTE USB Adapter to 4G LTE USB Adapter to 4G LTE USB Adapter</p>	<p>D-Link Internet Connection Failover to 4G LTE USB Adapter Setup [pdf] Instructions</p> <p>D-Link, Internet, Connection, Failover, to, 4G, LTE, USB Adapter, Setup, DSR-1000AC, DSR-500AC</p>
---	--