



D-Link E15 AX1500 Wi-Fi 6 AI Mesh Range Extender Installation Guide

[Home](#) » [D-Link](#) » D-Link E15 AX1500 Wi-Fi 6 AI Mesh Range Extender Installation Guide 

Contents

- [1 D-Link E15 AX1500 Wi-Fi 6 AI Mesh Range Extender](#)
- [2 PACKAGE CONTENTS](#)
- [3 INSTALLATION](#)
- [4 FREQUENTLY ASKED QUESTIONS](#)
- [5 GPL CODE STATEMENT](#)
- [6 TECHNICAL SUPPORT](#)
- [7 FCC WARNING](#)
- [8 Documents / Resources](#)
 - [8.1 References](#)
- [9 Related Posts](#)



D-Link E15 AX1500 Wi-Fi 6 AI Mesh Range Extender



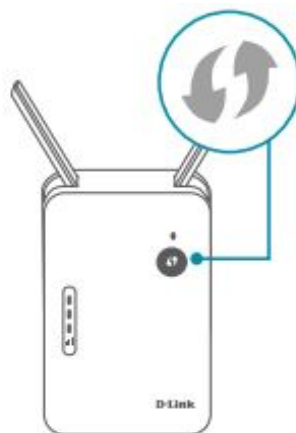
PACKAGE CONTENTS

- E15 || AX1500 Wi-Fi 6 AI Mesh Range Extender
- Ethernet Cable
- Quick Installation Guide
- Quick Installation Card

INSTALLATION

OPTION 1 QUICK WPS SETUP

1. Plug the E15 into a power source near your wireless router. Wait for the Status LED to flash orange.
2. Press the WPS button on your router for 3 seconds. Refer to your router's manual for router behavior.
3. Press the WPS button on your E15 for 3 seconds. The status LED should start to flash white.
4. When the Status LED turns solid white (may take up to 3 minutes), this indicates that your E15 is connected to your wireless router.



Your setup is complete! You can now unplug and move your device to a location between your router and the area where you want wireless coverage. By default, your device will share the same Wi-Fi name and password as your router.

IMPORTANT

WPS may be disabled on some Routers or Modems. If the WPS Status LED on your Router or Modem does

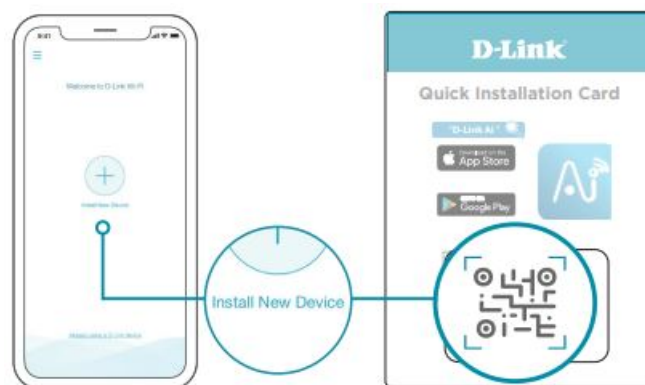
not start blinking when you have pressed the WPS button, try again and hold it a little longer. If it still does not blink, STOP, and configure your E15 using
Option 2: D-Link Ai App Setup.

OPTION 2 D-LINK AI APP SETUP

1. Download the D-Link Ai app and launch it.



2. Tap Install New Device. Scan the Setup code on the Quick Installation Card. Follow the on-screen instructions to complete the setup.



FREQUENTLY ASKED QUESTIONS

Why can't I connect wirelessly or my wireless connection drops?

1. Verify that your Range Extender is within range of your wireless router. Try plugging it into a location closer to the router and verify the Status LED is solid white.
2. Note that when extending a wireless signal from a router or access point, devices connected to the Range Extender will not get the same speed/throughput as when connected directly to the router.

Signal Strength Indicator		
Weak (1 x White)	Good (2 x White)	Strong (3 x White)



Why can't I access the web-based configuration utility?

Verify that <http://WXYZ.devicesetup.net/> has been correctly entered into the browser (WXYZ represents the last 4

characters of the MAC address). The Wi-Fi Name/SSID, Wi-Fi Password, and device password are printed on the Quick Installation Card and on the device label.

Why can't I access the Internet?

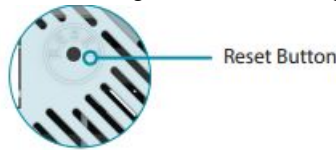
Power cycle your Range Extender and check your Internet access again. If you still can not connect to the Internet, check your wireless router. Refer to your wireless router's manual for troubleshooting.

What do I do if I forgot my device password or my Wi-Fi Password?

1. If you forgot your password, you must reset your Range Extender. This process will change all your settings back to the factory defaults.
2. Set up your Range Extender using your preferred method.

How do I restore the Range Extender to its factory default settings?

Locate the reset button. With the Range Extender powered on, use a paper clip to hold the button down until the LED turns solid red. Release the button and the Range Extender will go through its reboot process.



GPL CODE STATEMENT

This D-Link product includes software code developed by third parties, including software code subject to the GNU General Public License ("GPL") or GNU Lesser General Public License ("LGPL"). As applicable, the terms of the GPL and LGPL, and information on obtaining access to the GPL code and LGPL code used in this product, are available to view the full GPL Code Statement at: <https://tsd.dlink.com.tw/GPL>

The GPL code and LGPL code used in this product is distributed WITHOUT ANY WARRANTY and is subject to the copyrights of one or more authors. For details, see the GPL code and the LGPL code for this product and the terms of the GPL and LGPL.

Written Offer for GPL and LGPL Source Code

Where such specific license terms entitle you to the source code of such software, D-Link will provide upon written request via email and/or traditional paper mail the applicable GPL and LGPL-source code files via CD-ROM for a nominal cost to cover shipping and media charges as allowed under the GPL and LGPL.

Please direct all inquiries to:

Snail Mail:

Attn: GPLSOURCE REQUEST D-Link Systems, Inc.
14420 Myford Road, Suite 100 Irvine, CA 92606
GPLCODE@dlink.com

TECHNICAL SUPPORT

Having trouble installing your new product? D-Link's website contains the latest user documentation and software updates for D-Link products. Customers can contact D-Link Technical Support through our website by choosing the relevant region.

United States

Website: <http://support.dlink.com>

Telephone: (877) 453-5465

Canada

Website: <http://support.dlink.ca>



Telephone: (800) 361-5265

FCC WARNING

This device complies with Part 15 of the FCC Rules. Operation is subject to the following two conditions:

- (1) The device may not cause harmful interface, and
- (2) this device must accept any interface received, including an interface that may cause undesired operation.

Documents / Resources

	D-Link E15 AX1500 Wi-Fi 6 AI Mesh Range Extender [pdf] Installation Guide E15, AX1500 Wi-Fi 6 AI Mesh Range Extender
	D-Link E15 AX1500 Wi-Fi 6 AI Mesh Range Extender [pdf] Installation Guide E15 AX1500 Wi-Fi 6 AI Mesh Range Extender, E15, AX1500 Wi-Fi 6 AI Mesh Range Extender, Wi-Fi 6 AI Mesh Range Extender, Mesh Range Extender, Range Extender, Extender

References

- [D-Link Support](#)
- [D-Link Support](#)
- [D-Link AI Device Setup](#)
- [D-Link | Technical Support | GPL Source Code Support](#)