



## D-Link E15 AX1500 Mesh Wi-Fi 6 Range Extender User Manual

[Home](#) » [D-Link](#) » D-Link E15 AX1500 Mesh Wi-Fi 6 Range Extender User Manual

### Contents [ [hide](#) ]

- [1 D-Link E15 AX1500 Mesh Wi-Fi 6 Range Extender](#)
- [2 PACKAGE CONTENTS](#)
- [3 INSTALLATION](#)
  - [3.1 D-LINK AI APP SETUP](#)
- [4 FREQUENTLY ASKED QUESTIONS](#)
- [5 Documents / Resources](#)
  - [5.1 References](#)
- [6 Related Posts](#)

# D-Link

**D-Link E15 AX1500 Mesh Wi-Fi 6 Range Extender**



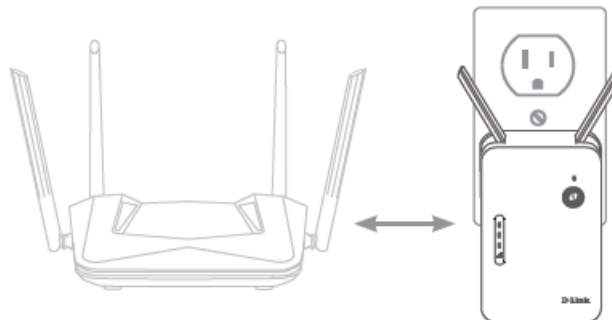
## PACKAGE CONTENTS

- E15 || AX1500 Mesh Wi-Fi 6 Range Extender
- Quick Installation Guide
- Quick Installation Card

## INSTALLATION

### D-LINK AI APP SETUP

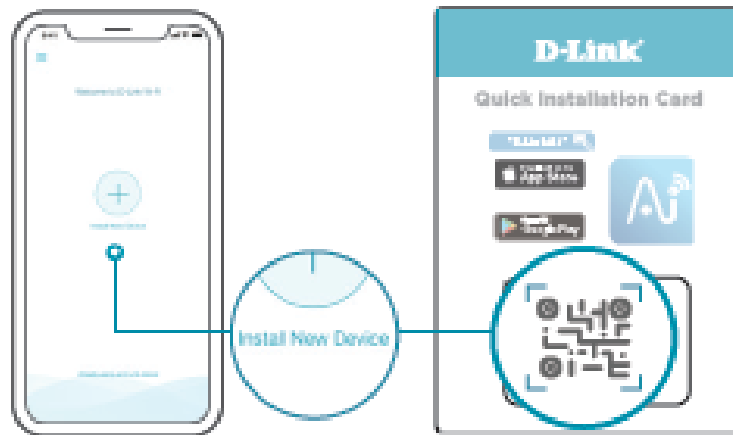
1. Plug the Range Extender into a power outlet next to your router.



2. Download the D-Link Ai app and launch it.



3. Tap Install New Device. Scan the QR code on the Quick Installation Card. Follow the on-screen instructions to complete the setup.



**Tip:** Before you start, make sure you know your current router's Wi-Fi name and password as you will need this info for setup.

## FREQUENTLY ASKED QUESTIONS

### Why can't I connect to my wireless router or my wireless connection drops?

1. Verify that your Range Extender is within range of your wireless router. Try plugging it into a location closer to the router and verify the Status LED is solid white.
2. Note that when extending a wireless signal from a router or access point, devices connected to the Range Extender will not get the same speed/ throughput as when connected directly to the router.

Signal Strength Indicator		
Weak (1 x White)	Good (2 x White)	Strong (3 x White)



### How do I change the wireless settings on my Range Extender?

1. Open a web browser (e.g., Internet Explorer, Firefox, Chrome, or Safari) and go to the URL found on the QIC or on the back of the Range Extender (i.e., <http://dlinkapXXXX.local/>).
2. At the login screen, enter your Admin Password (If WPS Setup was used, the password is "password" by default) and click Log in.
3. Go to Settings > Extender.
4. Enter a new Wi-Fi Network Name (SSID) and modify the security (Wi-Fi password) settings as needed.
5. Click Save.

### What is Mesh Smart Roaming?

With Mesh Smart Roaming, your Wi-Fi device (e.g. SmartPhone, Tablet) will automatically roam to the strongest Wi-Fi signal, eliminating the need to switch between your Router's and Range Extender's Wi-Fi signal as you move around your home.

### Mesh Smart Roaming Requirements:

1. The Wi-Fi device (e.g. SmartPhone, Tablet) must support the 802.11k/v standard.
2. The Wireless Name (SSID) & Wireless Password must be the same on both the Mesh Wi-Fi Range Extender and your Wireless Router.

### What if I forgot my Range Extender's Admin password or want to reset my Range Extender?

1. If you forgot your Admin password or want to reset your Range Extender back to the factory default settings, press and hold the reset button on the bottom of the extender using a paper clip and release after the Status light turns red.

**Note:** This process will erase all your settings.

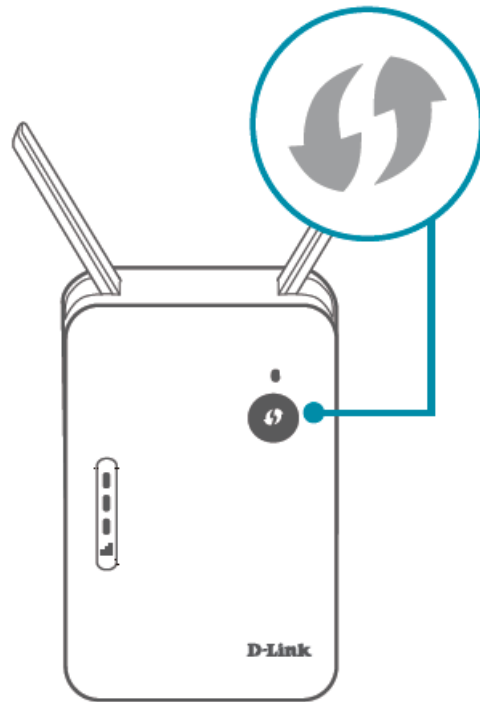
2. Setup your Range Extender using your preferred method.



### How do I setup my Range Extender using WPS?

**IMPORTANT:** WPS may be disabled on some Routers or Modems. If the WPS Status LED on your Router or Modem does not start blinking when you have pressed the WPS button, try again and hold it a little longer. If it still does not blink, STOP, and configure your Range Extender using the D-Link Ai App Setup.

1. Plug your Range Extender into an available outlet near your wireless router and wait until the Status LED is blinking amber (this may take up to 3 minutes). You can move it to a more suitable location after it is set up.
2. Press the WPS (Wi-Fi Protected Setup) button on your wireless router for 3 seconds. An LED should start blinking on your router. If it does not blink, see the important note above.
3. Once confirmed that the WPS light is blinking on your router, within one minute, press the WPS button on your Range Extender for 2-3 seconds. The Status LED should start to blink red / white alternatively.
4. When the Status LED turns solid white (may take up to 3 minutes), this indicates that your Range Extender is securely connected to your wireless router.



Your setup is complete! You can now unplug and move your Range Extender to a location between your Wireless Router and the area where you want wireless coverage. By default, your Range Extender will share the same Wi-Fi name and password as your Router. When using WPS setup, the default Admin Password is "password". If after moving your Range Extender, the signal strength indicator is showing one single white bar or if your Range Extender LED does not turn solid white within 3 minutes, move your Range Extender to a wall outlet closer to your wireless router.

### **D-LINK WI-FI MESH**

You can easily pair your AX1500 Mesh Wi-Fi 6 Range Extender (E15) with any D-Link Wi-Fi Mesh-enabled Router to create a seamless mesh network that covers every corner of your home.

### **TECHNICAL SUPPORT**

Having trouble installing your new product? D-Link's support website contains live chat, video tutorials, commonly asked questions, the latest user documentation and software updates for D-Link products.

#### **Canada**

1-800-361-5265

<https://support.dlink.ca/E15>

[YouTube.com/DLinkTutorials](https://www.youtube.com/DLinkTutorials)

### **GPL CODE STATEMENT**

This D-Link product includes software code developed by third parties, including software code subject to the GNU General Public License ("GPL ") or GNU Lesser General Public License ("LGPL"). As applicable, the terms of the GPL and LGPL, and information on obtaining access to the GPL code and LGPL code used in this product, are available to view the full GPL Code Statement at: <https://tsd.dlink.com.tw/GPL>

The GPL code and LGPL code used in this product is distributed WITHOUT ANY WARRANTY and is subject to the copyrights of one or more authors. For details, see the GPL code and the LGPL code for this product and the terms of the GPL and LGPL.

### **Written Offer for GPL and LGPL Source Code**

Where such specific license terms entitle you to the source code of such software, D-Link will provide upon written

request via email and/or traditional paper mail the applicable GPL and LGPLsource code files via CD-ROM for a nominal cost to cover shipping and media charges as allowed under the GPL and LGPL.

Please direct all inquiries to:

**Snail Mail:**


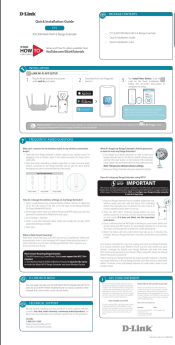
Attn: GPLSOURCE REQUEST D-Link Systems, Inc. 14420 Myford Road, Suite 100 Irvine, CA 92606

**Email:**





[GPLCODE@dlink.com](mailto:GPLCODE@dlink.com)



## Documents / Resources

	<p><a href="#">D-Link E15 AX1500 Mesh Wi-Fi 6 Range Extender</a> [pdf] User Manual E15, AX1500, Mesh, Wi-Fi 6, Range Extender</p>
	<p><a href="#">D-Link E15 AX1500 Mesh Wi-Fi 6 Range Extender</a> [pdf] Installation Guide E15, AX1500 Mesh Wi-Fi 6 Range Extender</p>

## References

-  [D-Link Technical Support](#)
-  [DLinkTutorials - YouTube](#)
-  [D-Link Technical Support](#)
-  [D-Link | Technical Support | GPL Source Code Support](#)