



D-Link DUB-2327 6 In 1 USB-C Hub with HDMI Card Reader Power Delivery User Guide

[Home](#) » [D-Link](#) » D-Link DUB-2327 6 In 1 USB-C Hub with HDMI Card Reader Power Delivery User Guide 

Contents

- [1 D-Link DUB-2327 6 In 1 USB-C Hub with HDMI Card Reader Power Delivery](#)
- [2 Product Information](#)
- [3 Product Usage](#)
- [4 CONNECTIVITY](#)
- [5 Documents / Resources](#)
 - [5.1 References](#)
- [6 Related Posts](#)

D-Link

D-Link DUB-2327 6 In 1 USB-C Hub with HDMI Card Reader Power Delivery



Product Information

The 6-in-1 USB-C Hub with HDMI/Card Reader/Power Delivery (model number DUB-2327) is a versatile device that allows you to connect multiple peripherals to your USB-C-enabled laptop or tablet. The hub includes the following ports:

- One HDMI port for connecting an external display with resolutions up to 4K@30Hz.
- One SD card slot and one microSD card slot for reading/writing data to/from memory cards.
- One USB 3.0 Type-A port for connecting USB peripherals such as external hard drives, flash drives, keyboards, and mice.
- One USB-C port for charging your laptop or tablet with Power Delivery up to 60W.

The hub is compact and lightweight, making it easy to carry with you when you're on the go. It is compatible with Windows, macOS, and Chrome OS, and requires no additional drivers or software to be installed.

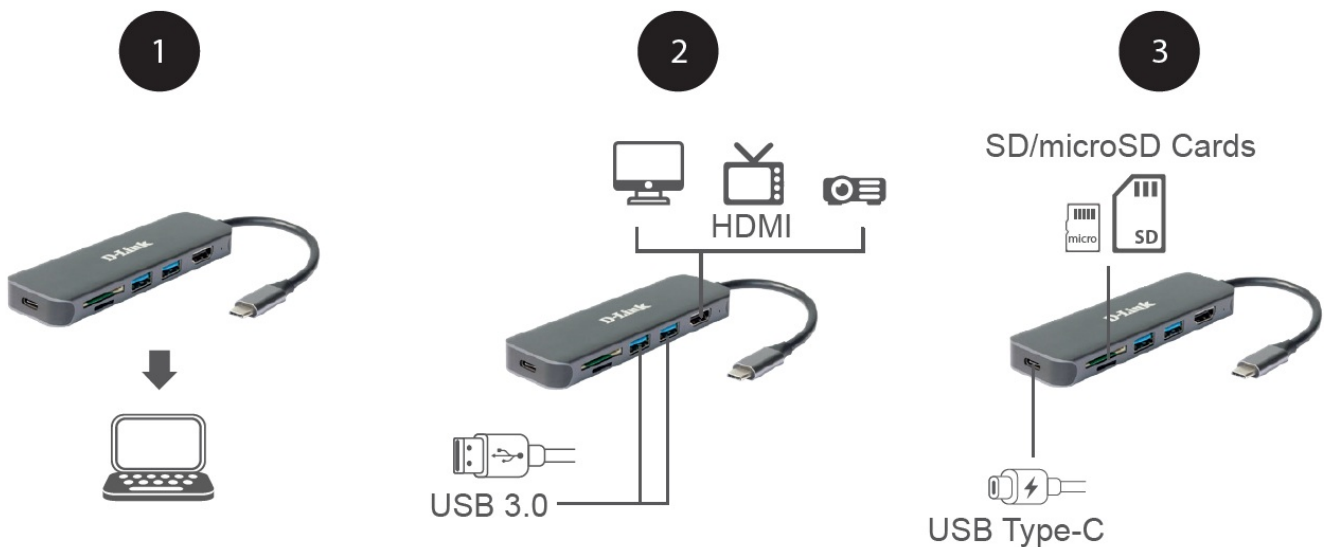
Product Usage

To use the 6-in-1 USB-C Hub with your laptop or tablet, follow these steps:

1. Ensure that your laptop or tablet has a USB-C port that supports DisplayPort Alternate Mode and Power Delivery.
2. Insert the hub's USB-C connector into your laptop or tablet's USB-C port.
3. Connect an HDMI cable (not included) from the hub's HDMI port to an external display's HDMI input.
4. (Optional) Insert an SD or microSD card into the corresponding card slot on the hub.
5. (Optional) Connect USB peripherals to the hub's USB 3.0 Type-A port.
6. (Optional) Connect your laptop or tablet's power adapter to the hub's USB-C port to charge your device.
7. Your laptop or tablet should automatically recognize the external display and peripherals connected to the hub.


Please note that some laptops or tablets may require additional configuration settings to enable display output through the hub. Refer to your device's user manual or manufacturer's website for more information.

CONNECTIVITY



<https://eu.dlink.com/support>
<https://eu.dlink.com/DUB-2327>

Documents / Resources

 The image shows the product packaging for the D-Link DUB-2327. It features a black and white photograph of the USB-C hub, which has a USB-C port, a USB-A port, an HDMI port, and a card reader slot. The text on the box includes '6 In 1 USB-C Hub with HDMI Card Reader Power Delivery', 'DUB-2327', and the D-Link logo.	<p>D-Link DUB-2327 6 In 1 USB-C Hub with HDMI Card Reader Power Delivery [pdf] User Guide</p> <p>DUB-2327 6 In 1 USB-C Hub with HDMI Card Reader Power Delivery, DUB-2327, 6 In 1 USB-C Hub with HDMI Card Reader Power Delivery, Card Reader Power Delivery, Power Delivery</p>
---	--

References

- [D For Home | D-Link](#)
- [D For Home | D-Link](#)