

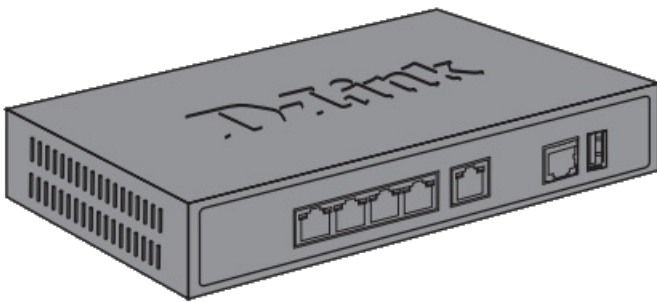
# D-Link DSR-250V2 Unified Services Router Installation Guide



## Quick Installation Guide Unified Services Router

This document will guide you through the basic installation process for your new D-Link Unified Services Router.

DSR-250V2



## About This Guide

This guide gives step by step instructions for setting up D-Link DSR-250V2 Services Router. Please note that the model you have purchased may appear slightly different from those shown in the illustrations.

## Unpacking the Product

Open the shipping carton and carefully unpack its contents. Please consult the packing list located in following information to make sure all items are present and undamaged. If any item is missing or damaged, please contact your local D-Link reseller for replacement.

- One (1) DSR-250V2 Unified Services Router Appliance
- One (1) 12V/1.5A Power Adapter – One (1) Console Cable (RJ45-to-DB9 Cable)
- One (1) Ethernet (CAT5 UTP/Straight Through) Cable

## Product Overview

This chapter provides detailed descriptions of the DSR-250V2 device and its components.

## Front Panel

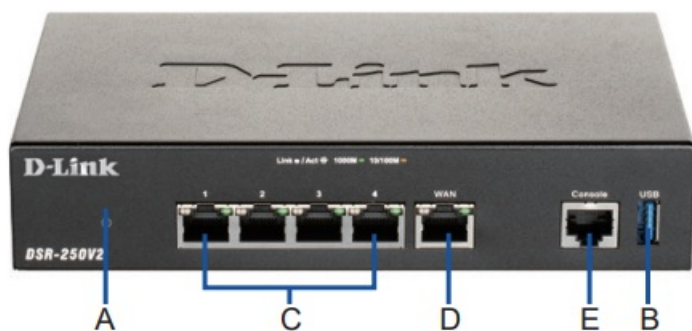


Figure 1. DSR-250V2 Front Panel

Item	Feature	Description
A	LED (Top to bottom)	Power LED: Indicates the Services Router is powered on.
B	USB Port (1)	It can support various USB 2.0, 3.0 devices below: 1.Flash Disk or Hard Disk for network sharing. 2.Printer (It will be supported by future firmware upgrade)
C	Gigabit LAN port (1-4)	Connect Ethernet devices, such as computers, switches and hubs.
D	Gigabit WAN port (1)	One auto MDI/MDIX WAN ports are the connection for the Ethernet cable to the cable or DSL modem.
E	Console Port (1)	Used to access Command Line Interface (CLI) via RJ45-to-DB9 console Cable.

Table 1: DSR-250V2 Front Panel Descriptions

#### Device Status LEDs and Ethernet Port LEDs



Figure 2. Ethernet RJ-45 Port LEDs

1. Link Speed
2. TX/RX Status

The device LEDs show information about current device status. When the device power up, the POWER/STATUS LED will show solid orange during power on process. Startup takes one minute approximately to complete, the LED will change to solid green. If you want to turn the device off and on again, we recommend you wait a few seconds between shutting it down and powering it back. The Ethernet LEDs show the status of each Ethernet port. Table 2 lists the name, color, status and description of each device LED.

LED Indicators	Color	Status	Description
Power / Status	Orange/Green/Red	Solid Orange	Device during power-on process
		Solid Green	Completion of power on
		Solid Red	Factory Reset
		Blinking Red	Firmware upgrade
		Light Off	The device is power-off
TX/RX Status	Green	Light Off	No Link.
		Solid Green	Link present.
		Blinking Green	Port is sending or receiving data.
LINK Speed	Green/Orange	Solid Orange	Port is operating at 10Mbps.
		Solid Orange	Port is operating at 100Mbps
		Solid Green	Port is operating at 1000Mbps

Table 2: Device Status LED Descriptions

#### DSR-250V2 Default Interface Settings

Ethernet Interface	Interface Type	IP Address	Web-Based Management	DHCP Server
LAN(1-4)	Static IP	192.168.10.1	Enabled	Enabled
WAN	DHCP Client	0.0.0.0	Disabled	Disabled

Table 3: Default Interface Settings

**Note:** D-Link Services Routers only allow Web GUI access from LAN interfaces by default for security reason.

#### Installing and Connecting the Device

This chapter describes how to connect cables and power to the device.

##### Before You Begin

Observe the following precautions to help prevent shutdowns, equipment failures and injuries:

- Before installation, always check that the power supply is disconnected
- Ensure that the room in which you operate the device has adequate air circulation and that the room temperature does Not exceed 40°C (104°F)
- Allow 3 inch of clear space to the front and back of the device.
- Do not place the device in an equipment rack frame that blocks the air vents on the sides of the chassis. Ensure that enclosed racks have fans and louvered sides.
- Correct these hazardous conditions before any installation: moist or wet floors, leaks, ungrounded or frayed power cables, or missing safety grounds.

#### Connecting Power and Turn the Device On/Off

The AC/DC Power Adapter shipped with the device connects the device to earth ground when plugged into an AC grounding-type power outlet. The device must be connected to earth ground during normal operation.

To connect power to the device, plug the AC/DC power adapter into the DC power phone jack on the back panel of the device.

Note: We recommend using a surge protector for the power connection.

To power on the DSR-250V2 device, press the DC power switch on the rear panel to the on position. To power off the device, press the power switch to the off position.

## Connecting the Device to a Network

This section provides basic information about physically connecting the DSR-250V2 to a network. To connect the necessary cables as shown in Figure 3.

1. Connect an RJ-45 cable from the port labeled WAN to the external router. The port WAN is pre-allocated to the WAN network segment.
2. Connect an RJ-45 cable from the port labeled LAN (1-4) to a switch in the LAN network segment.
3. Connect an RJ45-to-DB9 cable from the console port for CLI (Command Line Interface) management access.

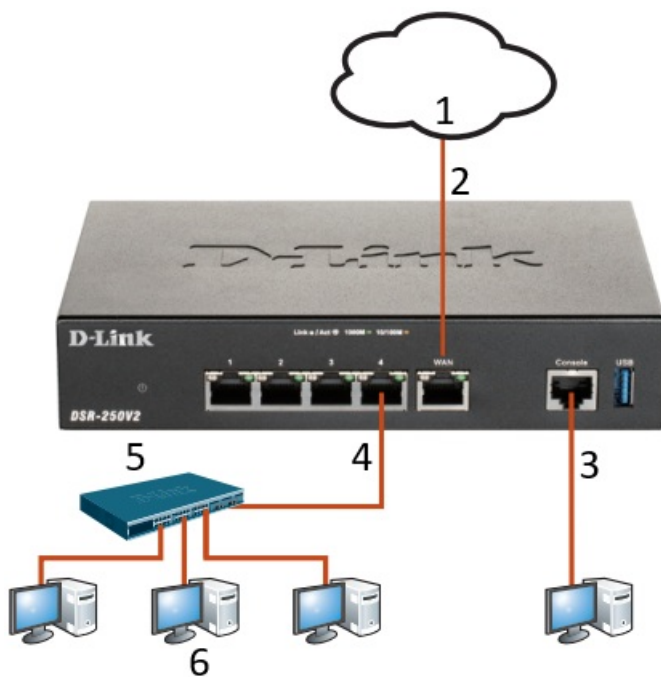


Figure 3. Basic Cabling Example

Internet  
WAN Console LAN

Switch

User

Initially Configure the Device

The services router software is preinstalled on the DSR-250V2 device. When the device is powered on, it is ready

to be configured. While the device has a default factory configuration that allow you to initially connect to the device, you must perform further configuration for your specific network requirements.

## Using the WebUI

To use the WebUI, the workstation from which you are managing the device must initially be on the same subnetwork as the device.

To access the device with the WebUI:

1. Connect your workstation on the port labeled LAN (1-4), which is pre-allocated to the LAN.
2. Ensure your workstation is DHCP Client enabled or configured with a static IP address in the 192.168.10.0/24 subnet.
3. Log on the Services Router Web Interface 192.168.10.1, the default log on information is:  
Username: admin Password: Admin\$123

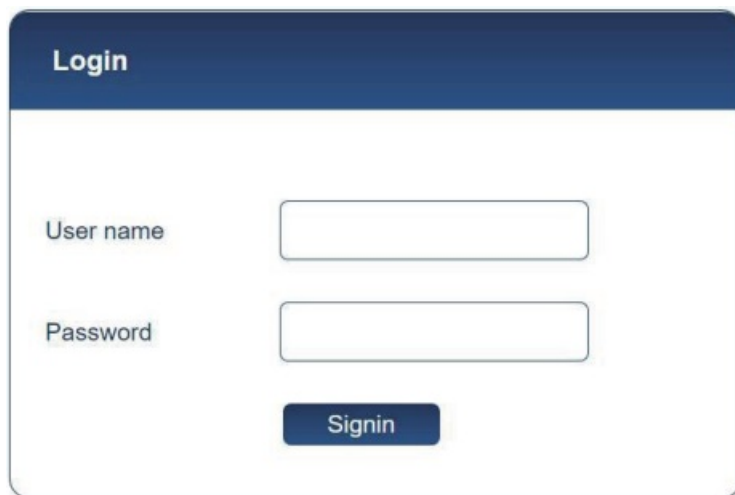
The image shows a web browser window with a login form. The title bar of the window is dark blue with the word "Login" in white. The form itself has a white background with a thin blue border. It contains two input fields: "User name" and "Password", each with a light blue border. Below the password field is a dark blue button with the word "Signin" in white text.

Figure 4. WebUI login

## Using a Console Connection (RJ45-to-DB9 DCE)

The Services Router provides an serial port that enables a connection to a computer or terminal for monitoring and configuring the device. This port is a RJ-45 connector, implemented as a data communication terminal equipment (DCE) connection.

To use the console port connection, you need the following equipment:

1. A terminal or a computer with both a serial port and the ability to emulate a terminal.
2. A RJ45-to-DB9 RS-232 with female connector. (Already included in packing list)
3. If your Laptop or PC doesn't have RS-232 connector, a converter is required.

Note: DSR-250V2 does not come with RS-232 converter and these must be purchased separately.

To establish a console connection:

1. Plug the RJ-45 connector of the supplied RJ45-to-DB9 cable directly to the console port on the Services Router.
2. Connect the other end of the cable to a terminal or to the serial connector of a computer running terminal

emulation software. Set the terminal emulation software as following:

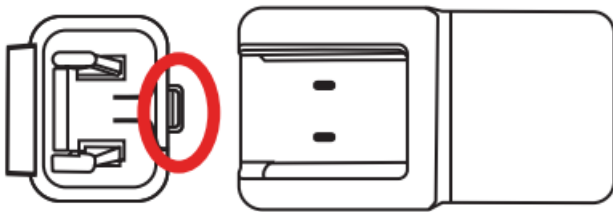
Baud rate: 115200   Parity: None   Flow control: None  
Data bits: 8   Stop bits: 1

3. When you have correctly set up the terminal, having previously followed the instructions in section “Connecting Power and Turn the Device On/ Off” then switch on your device. The boot sequence appears in the terminal.

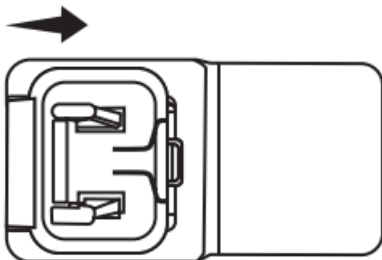
4. Once the boot sequence completes, the command prompt is displayed, the device is ready to be configured.

#### Instruction and Cautionary Statement

The AC adapter plug of this product is detachable. If an abnormal force is applied to the AC adapter such as by cable tripping, it may generate a gap between AC plug and AC adapter, or the plug may be separated from the adapter. In addition, if the AC plug is broken and you keep using it, there may be a risk of a spark, ignition or smoke. If the AC plug is not attached property or broken as stated above, stop using the product immediately.



Align the pin assembly with the adapter body.



Slide the pin assembly into the adapter body until it snaps into place.

#### Technical Support and Warranty Policy



<http://www.dlink.com/support>

<http://www.dlink.com/warranty>

#### Federal Communication Commission

#### Interference Statement

This device complies with Part 15 of the FCC Rules. Operation is subject to the following two conditions: (1) This device may not cause harmful interference, and (2) this device must accept any interference received, including interference that may cause undesired operation.

This equipment has been tested and found to comply with the limits for a Class B digital device, pursuant to Part 15 of the FCC Rules. These limits are designed to provide reasonable protection against harmful interference in a residential installation. This equipment generates, uses and can radiate radio frequency energy and, if not installed and used in accordance with the instructions, may cause harmful interference to radio communications. However, there is no guarantee that interference will not occur in a particular installation. If this equipment does cause harmful interference to radio or television reception, which can be determined by turning the equipment off and on, the user is encouraged to try to correct the interference by one of the following measures:

- Reorient or relocate the receiving antenna.
- Increase the separation between the equipment and receiver.
- Connect the equipment into an outlet on a circuit different from that to which the receiver is connected.
- Consult the dealer or an experienced radio/TV technician for help.

FCC Caution: Any changes or modifications not expressly approved by the party responsible for compliance could void the user's authority to operate this equipment.

#### Industry Canada statement

This device complies with ISSED's licence-exempt RSSs. Operation is subject to the following two conditions: (1) This device may not cause harmful interference, and (2) this device must accept any interference received, including interference that may cause undesired operation.


#### Contents

##### [1 Documents / Resources](#)

##### [1.1 References](#)

##### [2 Related Posts](#)

## Documents / Resources

	<b><a href="#">D-Link DSR-250V2 Unified Services Router</a></b> [pdf] Installation Guide DSR-250V2 Unified Services Router, DSR-250V2, Unified Services Router, Services Router, Router
---	--

## References

- [D-Link Support](#)
- [dlink.com/warranty](#)