




D-Link DSG-1520 Series Firmware Instructions

[Home](#) » [D-Link](#) » D-Link DSG-1520 Series Firmware Instructions 

D-Link DSG-1520 Series Firmware Instructions

D-Link®

DGS-1520 Series Firmware Release Notes



Firmware Version: V1.00.029
Prom Code Version: V1.00.011
Published: 2020/08/06

These release notes include important information about D-Link DGS-1520 Series firmware revisions. Please verify that these release notes are correct for your switch:

- If you are installing a new switch, please check the hardware version on the device label; make sure that your switch meets the system requirement of this firmware version. Please refer to [Revision History and System Requirement](#) for detailed firmware and hardware matrix.
- If the switch is powered on, you can check the hardware version by typing “show version” command or by checking the device information page on the web graphic user interface.
- If you plan to upgrade to the new firmware release, please refer to the [Upgrade Instructions](#):
D-Link switches support firmware upgrade via TFTP server. You can download the firmware from D-Link web site

<http://tsd.dlink.com.tw>, and copy the downloaded firmware to the TFTP server folder. Please make sure that the TFTP server is accessible from the switch via networks.

For more detailed information regarding DGS-1520 Series switch products, please refer to [Related Documentation](#). You can also download the switch firmware, D-View and technical documentation from <http://tsd.dlink.com.tw>.

Contents

- 1 Revision History and System Requirement
- 2 Upgrade Instructions:
 - 2.1 Upgrade using CLI (RJ-45 console port)
 - 2.2 Upgrading by using Web-UI
- 3 New Features
- 4 Changes of MIB & D-View Module
- 5 Changes of Command Line Interface
- 6 Problem Fixed
- 7 Known Issues
- 8 Related Documentation
- 9 Documents / Resources
 - 9.1 References
- 10 Related Posts

Revision History and System Requirement

Firmware Version	Date	Model	Hardware Version
Runtime: v1.00.029 PROM: v1.00.011	2020/08/06	DGS-1520	A1

Upgrade Instructions:

D-Link switches support firmware upgrade via TFTP server. You can download the firmware from D-Link web site <http://tsd.dlink.com.tw>, and copy the downloaded firmware to the TFTP server folder. Please make sure that the TFTP server is accessible from the switch via networks.

Upgrade using CLI (RJ-45 console port)

Connect a workstation to the switch console port and run any terminal program that can emulate a VT-100 terminal. The switch console port default settings are as follows:

- Baud rate: 115200
- Data bits: 8
- Parity: None
- Stop bits: 1

The switch will prompt the user to enter his/her username and password. The default username and password are as below:

Username: **admin**

Password: **admin**

To upgrade the switch firmware, execute the following commands:

Command

```
copy tftp://location/filename flash: filename
boot image URL(filename)
show boot
reboot
```

Function

Download firmware file from the TFTP server to the switch.
Change the boot up image file.
Display the information of current boot image and configuration.
Reboot the switch.

Example:

DGS-1520#copy tftp: //192.168.0.27/firmware.had flash: run.had

Address of remote host [192.168.0.27]
Source filename [firmware.had]
Destination filename [run.had]
Accessing tftp://192.168.0.27/ firmware.had...
Transmission start...
Transmission finished, file length 5156864 bytes.
Please wait, programming flash... Done

DGS-1520 Series Firmware Release Notes

DGS-1520#configure terminal DGS-1520(config)#boot image c:/switch-image1.had

DGS-1520#show boot

Unit 1

Boot image: /c:/1.00.029

Boot config: /c:/config.cfg

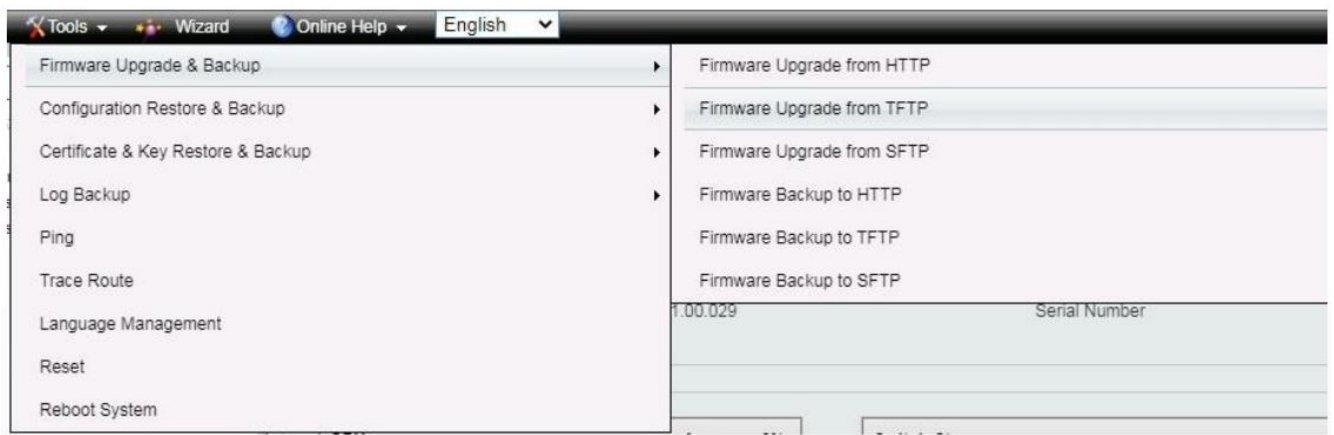
DGS-1520#reboot

Are you sure you want to proceed with the system reboot? (y|n) y

Please wait, the switch is rebooting...

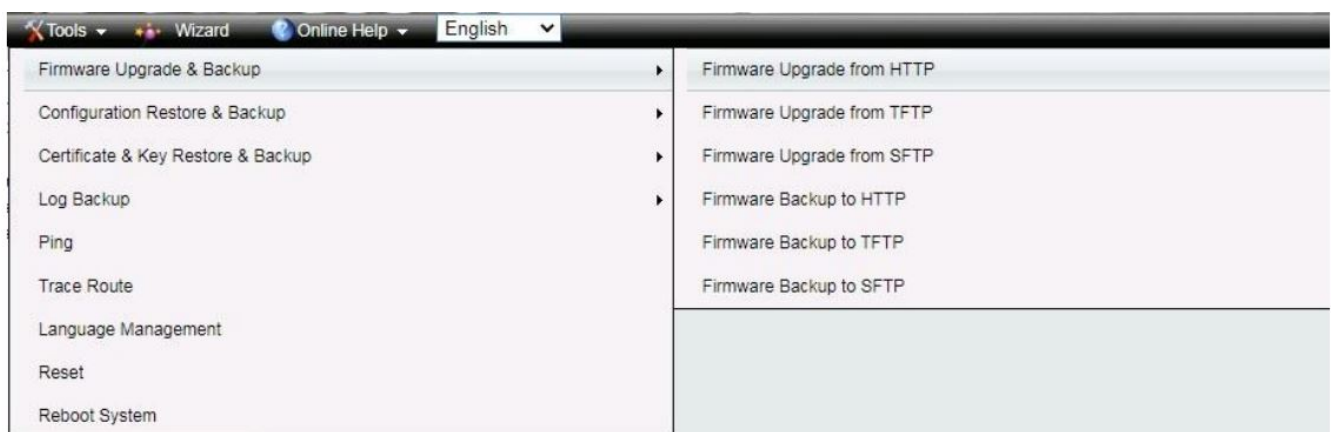
Upgrading by using Web-UI

1. Connect a workstation installed with java SE runtime environment to management port of the device and also connect console cable to switch's console port.
2. Open the web browser from the workstation and enter the IP address of the switch. The switch's default IP address is **10.90.90.90**
3. Enter administrator's username and password when prompted. **It should be noted starting from R1.20 formal firmware release the default login settings are as below:**
Username: admin
Password: admin
4. To update switch's firmware or configuration file via TFTP, select **Tools > Firmware Upgrade & Backup > Firmware Upgrade from TFTP.**



5. Enter the TFTP Server IP address.
6. Enter the name of the firmware file located on the TFTP server.
7. Enter the destination path and the desired file name.
8. Click “**Upgrade**” button.

9. Transmission will start and wait until the status is completed by displaying 100% complete.
10. Alternatively, the switch’s firmware or configuration file can also be upgraded via HTTP, select Tools > Firmware Upgrade & Backup > Firmware Upgrade from HTTP.



11. Enter the source and destination file.
12. Click “**Upgrade**” button.

Firmware Upgrade from HTTP

Source File	<input type="button" value="Choose File"/> DGS-1520_...0_029.had
Destination File	<input type="text" value="FW_v1.00.029"/>

13. Transmission will start and wait until the status is completed by displaying **100%** complete.
14. To select the boot up image used for next reboot, click **Management > Flash System** in the function tree and then click the C: drive name. When you see the files list, click corresponding **Boot Up** button to specify the firmware that will be used for next and subsequent boot up.



File System

Path

Drive	Media Type	Size (MB)	File System Type	Label
C:	Flash	59	FFS	

File System

Path

Index	Info	Attr	Size (byte)	Update Time	Name	
1	RUN(*)	-rw	14915216	Mar. 25 2019 02:40:50	DGS-1520_Run_1_00_02...	<input type="button" value="Boot Up"/> <input type="button" value="Rename"/> <input type="button" value="Delete"/>
2	CFG(*)	-rw	1751	Jan. 01 2019 02:03:01	config.cfg	<input type="button" value="Boot Up"/> <input type="button" value="Rename"/> <input type="button" value="Delete"/>
3		d--	0	Jan. 01 2019 00:00:09	system	<input type="button" value="Delete"/>

62283264 bytes total (46456320 bytes free)
 (*) -with boot up info

15. To reboot the switch, select **Tools > Reboot System** from the banner.

Tools **English**

- Firmware Upgrade & Backup
- Configuration Restore & Backup
- Certificate & Key Restore & Backup
- Log Backup
- Ping
- Trace Route
- Language Management
- Reset
- Reboot System**

16. Select Yes and click Reboot button to reboot the switch.

Reboot System

Reboot System

Do you want to save the settings ? ☒ Yes ☐ No

If you do not save the settings, all changes made in this session will be lost.

New Features

Firmware Version

V1.00.029

New Features

First release, please refer to datasheet and manual for detail function support

Changes of MIB & D-View Module

The new features of MIB file are also included in the corresponding D-View module. Please download the D-View module on <http://tsd.dlink.com.tw>. For detailed changes of MIB content, please refer to the modification history in each MIB file.

Firmware Version

V1.00.029

MIB File

First release, please refer to external specification for detail MIB support

Changes of Command Line Interface

The section below only shows command line changes that may bring backward compatibility issues with configuration settings for previous version of firmware. Any new feature commands that do not have backward compatibility issues are not included in the below section.

Firmware Version

V1.00.029

Changes

First release

Problem Fixed**Firmware Version**

V1.00.029

Problems

First release

* D-Link tracking number is enclosed in ()

Known Issues**Firmware Version**

V1.00.029

Issues

None


Workaround

* D-Link tracking number is enclosed in ()

Related Documentation

- DGS-1520 Series Web UI Manual Release
- DGS-1520 Series CLI Manual Release
- DGS-1520 Series H/W Installation Guide Release

Documents / Resources

	<p>D-Link DSG-1520 Series Firmware [pdf] Instructions</p> <p>DSG-1520 Series Firmware</p>
---	---

References

- [D-Link | Technical Support | Downloads](#)