



D-Link DMS-106XT 6-Port Multi-Gigabit Unmanaged Switch Installation Guide

[Home](#) » [D-Link](#) » D-Link DMS-106XT 6-Port Multi-Gigabit Unmanaged Switch Installation Guide 



6-PORT MULTI-GIGABIT UNMANAGED SWITCH
DMS-106XT

QUICK INSTALLATION GUIDE

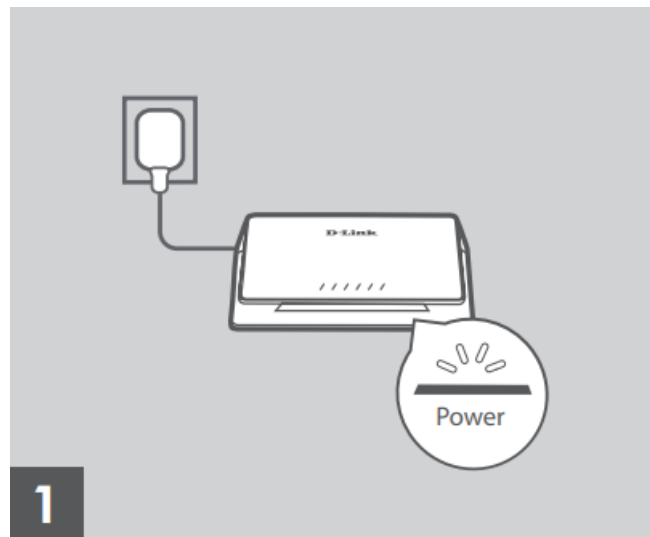
INSTALLATIONSANLEITUNG

Contents

- [1 Connect the Switch to Your Network](#)
- [2 Cables and Speeds](#)
- [3 Rear Panel Description](#)
- [4 TECHNICAL SUPPORT](#)
- [5 Documents / Resources](#)
- [6 Related Posts](#)

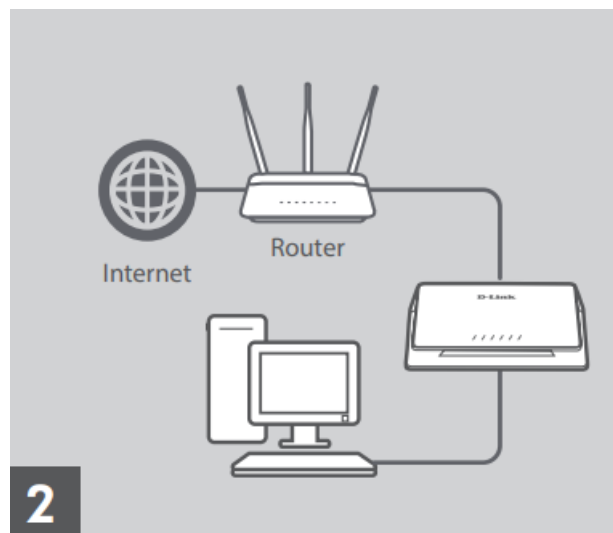
Connect the Switch to Your Network

Installation & Setup



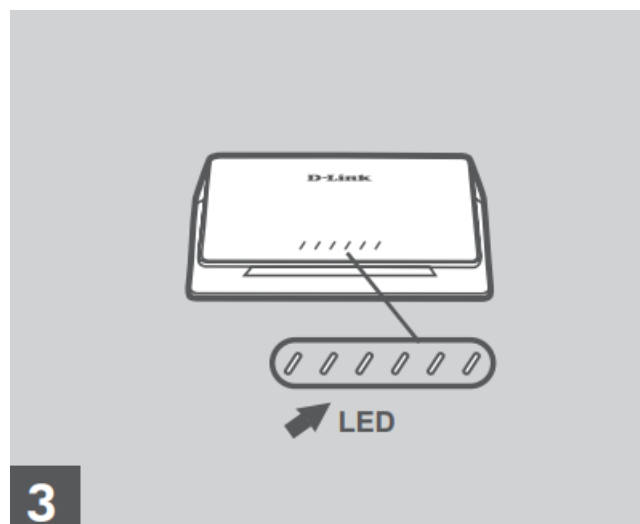
Step 1

Plug the supplied power adapter into the DMS-106XT and the other end into a power outlet, power strip, or surge protector (recommended). Verify that the Power indicator is lit on the switch.



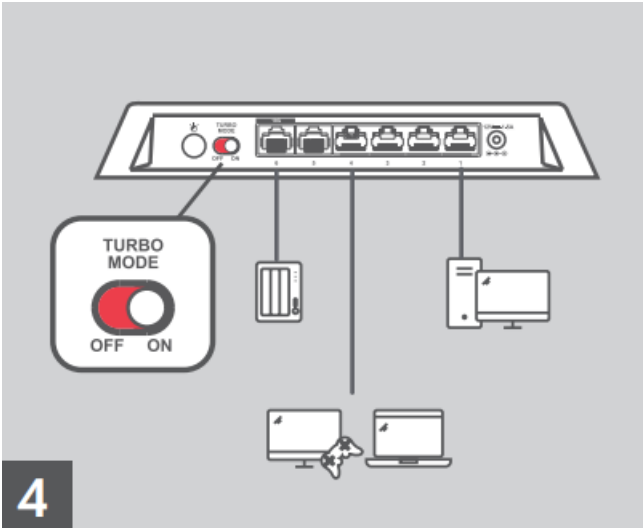
Step 2

If your switch will be up-linking to your existing gateway/router/ firewall, connect another Ethernet cable from your gateway/router/ firewall LAN port to an available port on your switch.



Step 3

Connect one end of an Ethernet cable into the device you want to connect to the switch and the other end into one of the Ethernet ports on the switch. Check the Link lights (LEDs) on the switch to verify a proper connection.



Step 4 (optional)

Turn on TURBO mode to enable low latency and multicast function to make your network efficient for multi-media applications (e.g. gaming, video streaming or file download.. etc).

The port-based QoS will be activated as well when TURBO mode is on. The user may connect the device to the desired port. Port 1 & Port 6> Port 2> Port 3> Port 4>Port 5
(Port 6 10GE uplink port has the highest priority as Port 1).

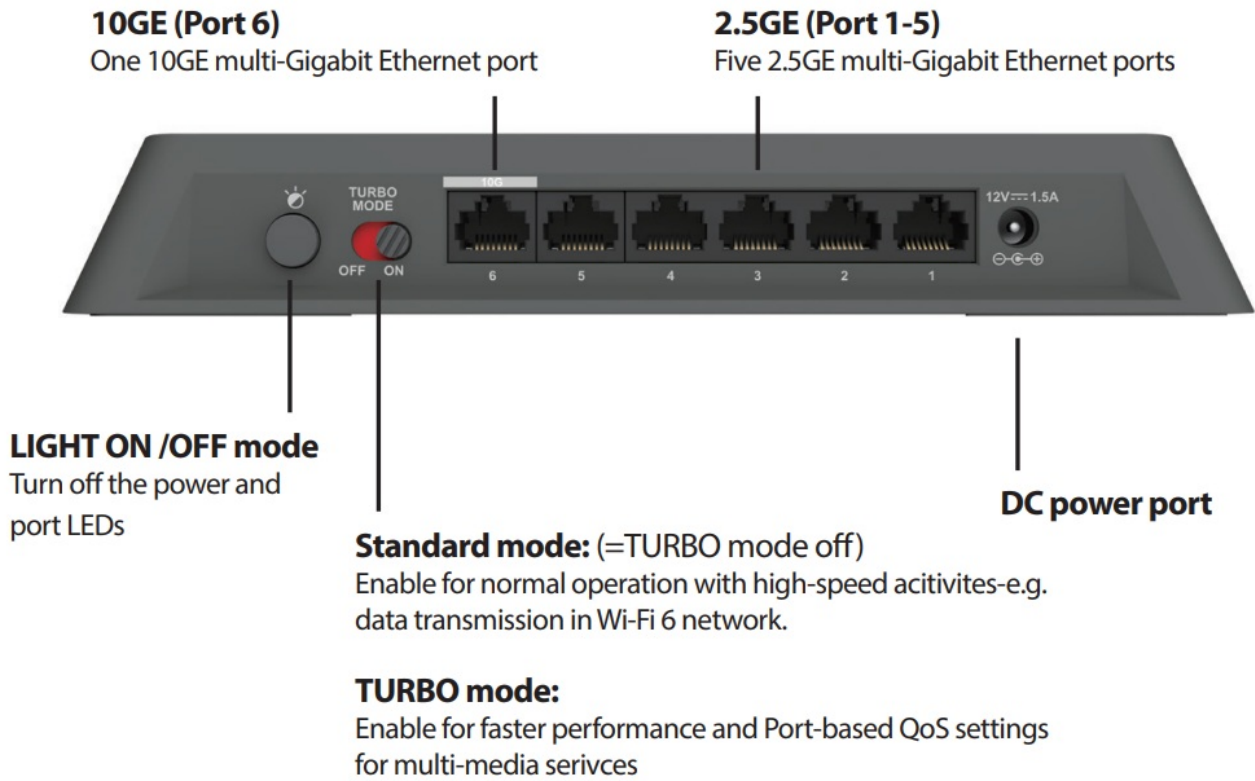
If you just need normal data transmission, leave the switch in standard mode to enable excellent performance in a Wi-Fi 6 network.

Cables and Speeds

The following table describes the network cables that you can use for the switch connections and the speeds that these cables can support, up to 328 feet (100 meters).

Speed	Cable Type
100 Mbps	Category 5 (Cat 5) or higher rated
1 Gbps, 2.5 Gbps, or 5 Gbps	Category 5e (Cat 5e) or higher rated
1 Gbps, 2.5 Gbps, or 5 Gbps	Category 6A (Cat 6A) or higher rated

Rear Panel Description



DC Power Jack:

Power is supplied through an external AC power adapter. Check the technical specification section for information about the AC power input voltage.

TURBO mode:

This button is to enable advanced functions, including low latency mode, multicast function, and Port-based QoS for multi-media services.

LED ON/OFF:

This is to turn off the POWER and LAN status LEDs.

LAN Ports:

Port 1 to 5 supports 2.5G Multi-gigabit Ethernet. Port 6 supports 10G Multi-gigabit Ethernet.



<http://www.dlink.com/support>



<http://www.dlink.com/warranty>



<http://www.dlink.com/resources/business>

TECHNICAL SUPPORT

dlink.com/support

DMS-106XT

Ver. 1.00(WW)_130x183 2021/04/20

Documents / Resources

 <p>D-Link 6-PORT MULTIGIGABIT UNMANAGED SWITCH DMS-106XT QUICK INSTALLATION GUIDE</p>	<p>D-Link DMS-106XT 6-Port Multi-Gigabit Unmanaged Switch [pdf] Installation Guide DMS-106XT, 6-Port Multi-Gigabit Unmanaged Switch</p>
---	---