



# D-Link DAP-1320 Wireless Range Extender Installation Guide

[Home](#) » [D-Link](#) » D-Link DAP-1320 Wireless Range Extender Installation Guide 

## Contents

- 1 D-Link DAP-1320 Wireless Range Extender
- 2 Apps
- 3 CONTENTS OF PACKAGING
- 4 INTRODUCTION
- 5 PRODUCT SETUP
  - 5.1 SETUP
- 6 PRODUCT SETUP
- 7 TROUBLESHOOTING
- 8 TECHNICAL SUPPORT
- 9 Documents / Resources
  - 9.1 References

# D-Link®

## D-Link DAP-1320 Wireless Range Extender



## Apps



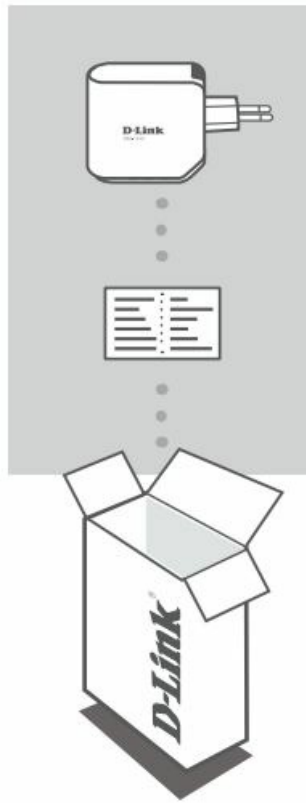
QRS  
Mobile App



QRS  
Mobile App



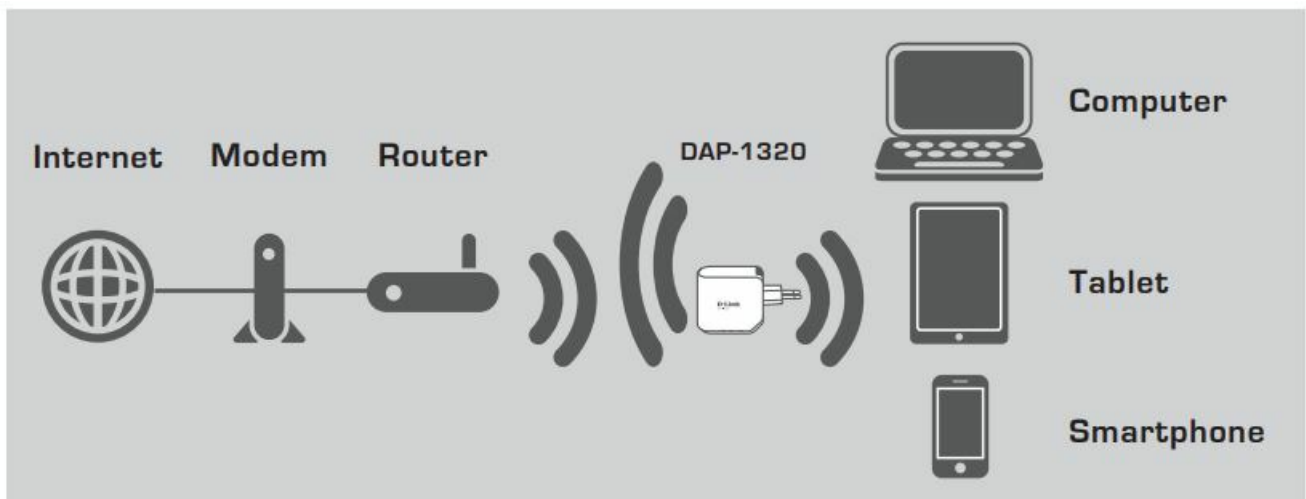
**CONTENTS OF PACKAGING**



- WIRELESS RANGE EXTENDER N300 DAP-1320
- WI-FI CONFIGURATION CARD
- If any of these items are missing from your packaging, contact your reseller.

## INTRODUCTION

The DAP-1320 extends the wireless coverage of an AP (access point) or wireless router, allowing you to extend the wireless network in your home.



## PRODUCT SETUP

### SETUP

#### SELECT YOUR METHOD

You can set up the DAP-1320 by two ways – the QRS Mobile App and One-Touch AP Configuration.

## SET UP DAP-1320 WITH QRS MOBILE APP



- First, please make sure that QRS Mobile app is installed on your phone or tablet. Then connect to the DAP-1320 from your mobile device's Wireless Utility. Select the DAP-1320 network name (SSID) and enter the password (both the SSID and password are on your Wi-Fi Configuration Card).
- Open QRS Mobile and the Setup Wizard will appear. Click Start to begin. The DAP-1320 will first scan for wireless networks from nearby wireless routers or APs. Select the wireless network that you wish to extend and enter the password if required.
- You can either keep the current network name (SSID) and password for the extended Wi-Fi network, or enter a new network name (SSID) and password. Then, you can choose to create an admin password to access the DAP-1320 Web-based configuration utility.
- A summary of the network settings will then be displayed. Once you are satisfied, click Save, and the Setup Wizard will reboot the DAP-1320 for the new settings to take effect. The DAP-1320 can now extend the Wi-Fi network for you.

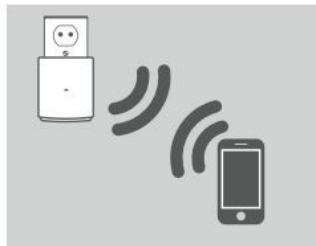
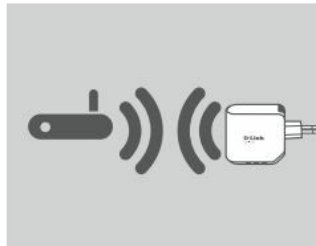
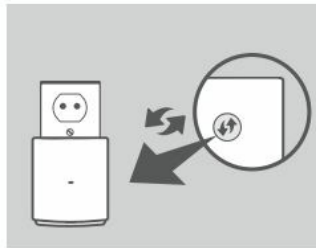


## PRODUCT SETUP

### SET UP DAP-1320 WITH ONE-TOUCH AP CONFIGURATION

**NOTE:** To connect to a wireless router or AP to extend the Wi-Fi network in your home, please make sure the router or AP features a WPS Push Button.

- Plug the DAP-1320 into a wall outlet and wait until the power LED is blinking amber. Push the WPS button on the wireless Router or AP, and then push and hold the WPS button on the DAP-1320 for about 5 seconds until the green LED starts to flash.
- Please allow up to two minutes for the process to finish. The LED will become solid green when the DAP-1320 has connected successfully to the wireless router or AP.
- The DAP-1320 is then ready for you to share a Wi-Fi network with your PCs and mobile devices by using the network name (SSID) and password located on your Wi-Fi Configuration Card.

**NOTE:**

The DAP-1320 can also be configured in the Web GUI. After you have plugged the DAP-1320 into a wall outlet and the power LED is blinking amber, go to Wireless Utility on your computer, select the DAP-1320 network, and enter the password (this is on your Wi-Fi Configuration Card). Then open a web browser and type <http://dlinkap.local>. Follow the onscreen instructions to complete the setup.

**TROUBLESHOOTING****SETUP AND CONFIGURATION PROBLEMS****HOW DO I RESET MY DAP-1320 WIRELESS RANGE EXTENDER N300 TO FACTORY DEFAULT SETTINGS?**

- Ensure the product is powered on.
- Press and hold the reset button on the bottom of the device for 5 seconds.

**Note:** Resetting the product to the factory default will erase the current configuration settings. The default Wi-Fi network name (SSID) and password are printed on the D-Link DAP-1320 Wireless Range Extender N300's Wi-Fi Configuration Card.

**HOW DO I ADD A NEW WI-FI CLIENT OR PC IF I HAVE FORGOTTEN MY WI-FI NETWORK NAME (SSID) OR WI-FI PASSWORD?**

- If you haven't changed the extended Wi-Fi network's settings, you can use the network name (SSID) and Wi-Fi password on the Wi-Fi Configuration Card.
- If you did change the network name (SSID) or Wi-Fi password and you did not record this information on the Wi-Fi Configuration Card or somewhere else, you must reset the device as described in Question 1 above.
- Make sure you write down these settings so that you can enter them into each wirelessly connected PC. You can use the included Wi-Fi Configuration Card to record this important information for future use.

## TECHNICAL SUPPORT

United Kingdom (Mon-Fri) website: <http://dlink.com>

Home Wireless/Broadband 0871 873 3000 (9.00am–06.00pm, Sat 10.00am-02.00pm) Managed, Smart, & Wireless Switches, or Firewalls 0871 873 0909 (09.00am- 05.30pm) (BT 10ppm, other carriers may vary.)

### Ireland (Mon-Fri)

All Products 1890 886 899 (09.00am-06.00pm, Sat 10.00am-02.00pm) Phone rates: €0.05ppm peak, €0.045ppm off peak times


## WIRELESS NETWORK REMINDER

- Wireless Network Name (SSID)
- Wireless Network Password

## TECHNICAL SUPPORT

- UK
  - [www.dlink.com](http://www.dlink.com)

## Documents / Resources

	<p><a href="#">D-Link DAP-1320 Wireless Range Extender</a> [pdf] Installation Guide DAP-1320, DAP-1320 Wireless Range Extender, Wireless Range Extender, Range Extender, E xtender</p>
---	--

## References

- [D For Home | D-Link](#)
- [D For Home | D-Link](#)
- <sup>MH</sup> [Search - Manual-Hub.com](#)