



D-Link DWL-2100AP Wireless G Access Point Quick Installation Guide

[Home](#) » [Support](#) » D-Link DWL-2100AP Wireless G Access Point Quick Installation Guide 

Contents

- [1 D-Link DWL-2100AP Wireless G Access Point](#)
- [2 Before You Begin](#)
- [3 Check Your Package Contents](#)
- [4 Using the Setup Wizard](#)
- [5 Appendix](#)
- [6 Technical Support](#)
- [7 FAQ's](#)
- [8 Related Posts](#)

D-Link

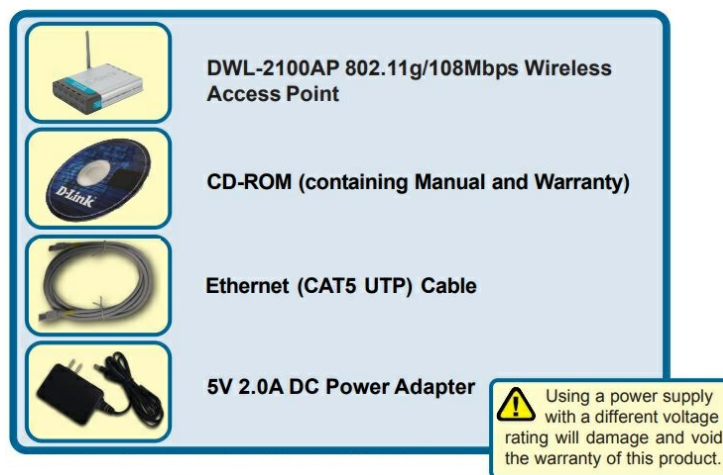
D-Link DWL-2100AP Wireless G Access Point



Before You Begin

It's best to use a computer (with an Ethernet adapter) that is connected to a switch for configuring the DWL-2100AP. The default IP address for the DWL-2100AP is 192.168.0.50 with a Subnet Mask of 255.255.255.0. You will need to assign your computer a Static IP address within the same range as the DWL-2100AP's IP address for the purpose of configuring the DWL-2100AP. See the Appendix if you need assistance in assigning a Static IP address for your network adapter.

Check Your Package Contents



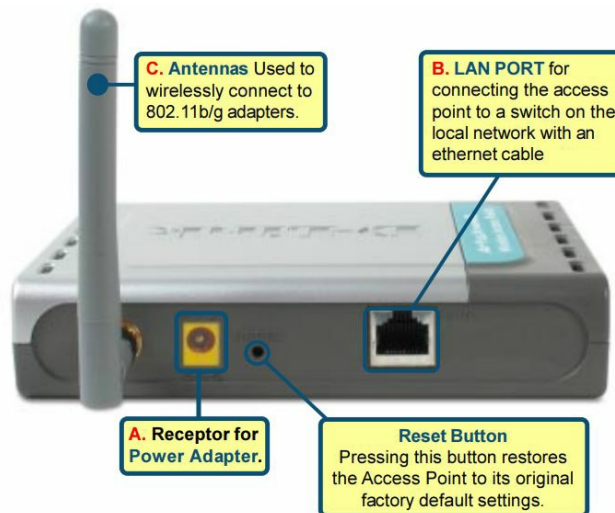
If any of the above items are missing, please contact your reseller.

Connecting the DWL-2100AP Wireless Access Point to Your Network

- A. First, connect the power adapter to the receptor at the back panel of the DWL-2100AP and then plug the other end of the power adapter to a wall outlet or power strip. The Power LED will turn ON to indicate proper operation.
- B. Insert one end of the cable to the Ethernet port on the back panel of the DWL-2100AP and the other end of the cable to an Ethernet Broadband Router (i.e., D-Link DI-604) or Switch (i.e., D-Link DSS-5+). **Note:** You also

have the option of connecting the DWL-2100AP directly to the computer that will be used for configuration. The Link LED light will illuminate to indicate a proper Ethernet connection. (**Note:** The Ethernet Port on the DWL-2100AP is Auto-MDI/MDIX. This means you can use a straight-through or crossover-Ethernet cable to connect to the Ethernet port on the DWL-2100AP.)

- C. The DWL-G650 AirPlus Xtreme G Wireless Cardbus Adapter and the DWL-G520 AirPlus Xtreme G Wireless PCI Adapter will connect, out of the box, with the DWL-2100AP, using their default wireless settings. Computers with 802.11b wireless adapters can also connect to the DWL-2100AP.



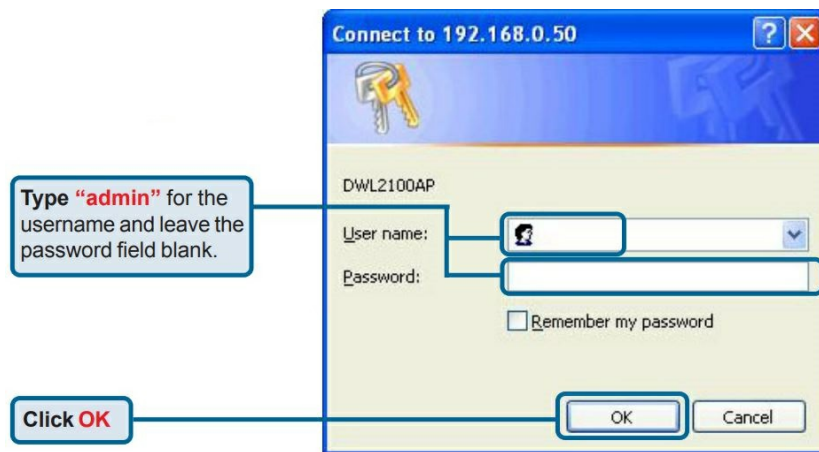
When you have completed the steps in this Quick Installation Guide, your connected network should look similar to this:



Using the Setup Wizard



The login pop-up screen will appear.



Once you have logged in, the Home screen will appear.



You will see the following screens.



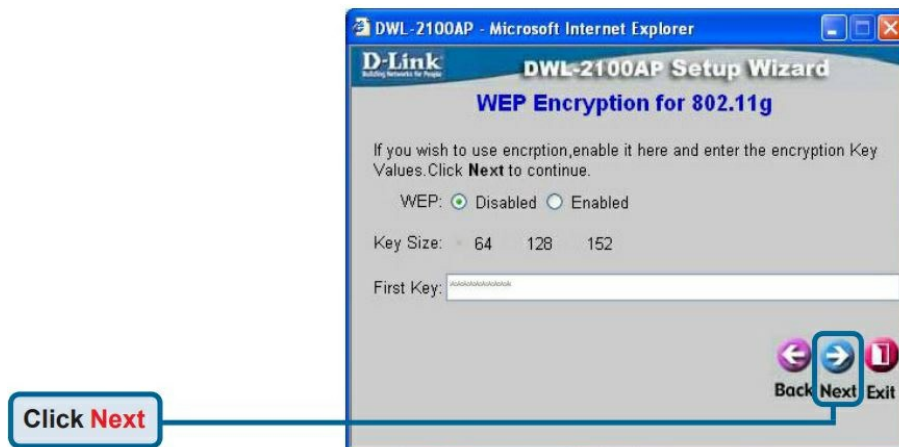
- **Step 1** – Set up your new password. You have the option to establish a password.



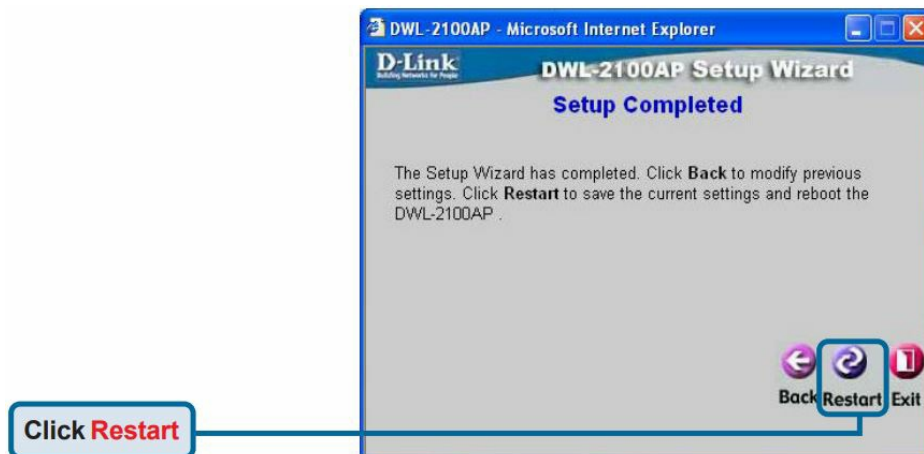
- **Step 2** – Wireless Setup The default wireless settings are: SSID = default Channel = 6 You can change these settings to match an existing wireless network.

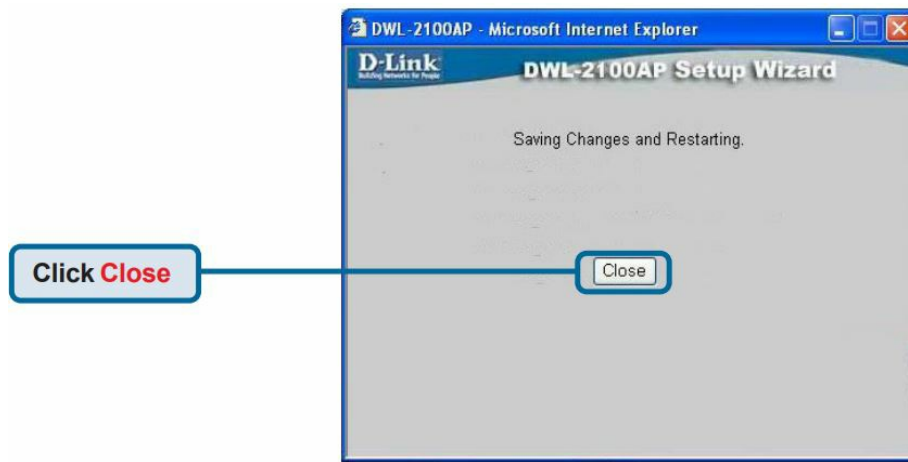


- **Step 3** – Encryption The DWL-2100AP is capable of two levels of wireless encryption 64-bit and 128-bit. By default the encryption is disabled. You can change the encryption settings for more secure wireless communication.

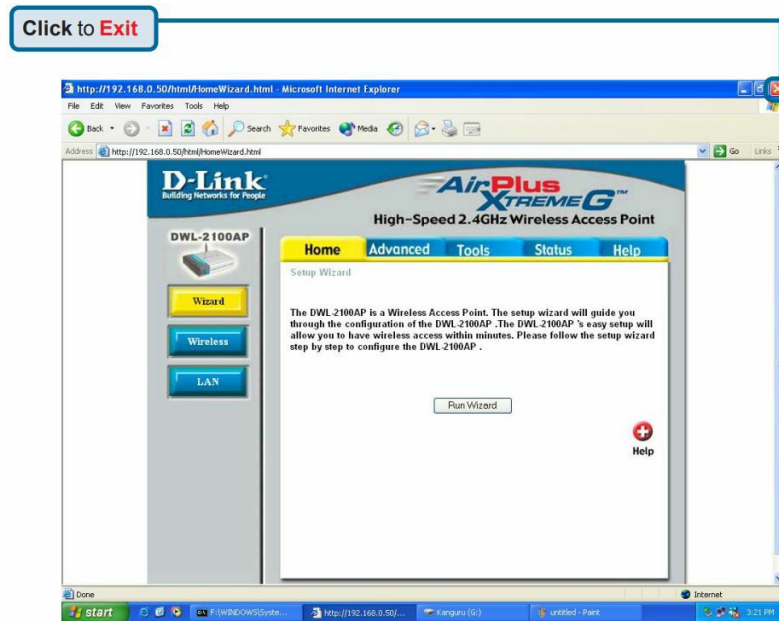


Your Setup is Complete!





You will be returned to the Home tab.

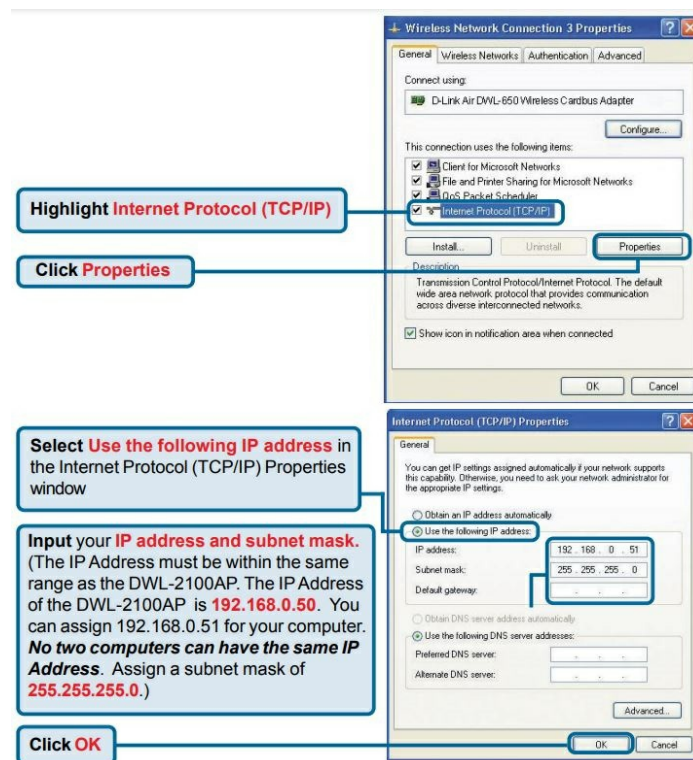


For additional settings or information, refer to the Advanced, Tools, or Status tabs on the web-management interface; or to the manual located on the CD-ROM.

Appendix

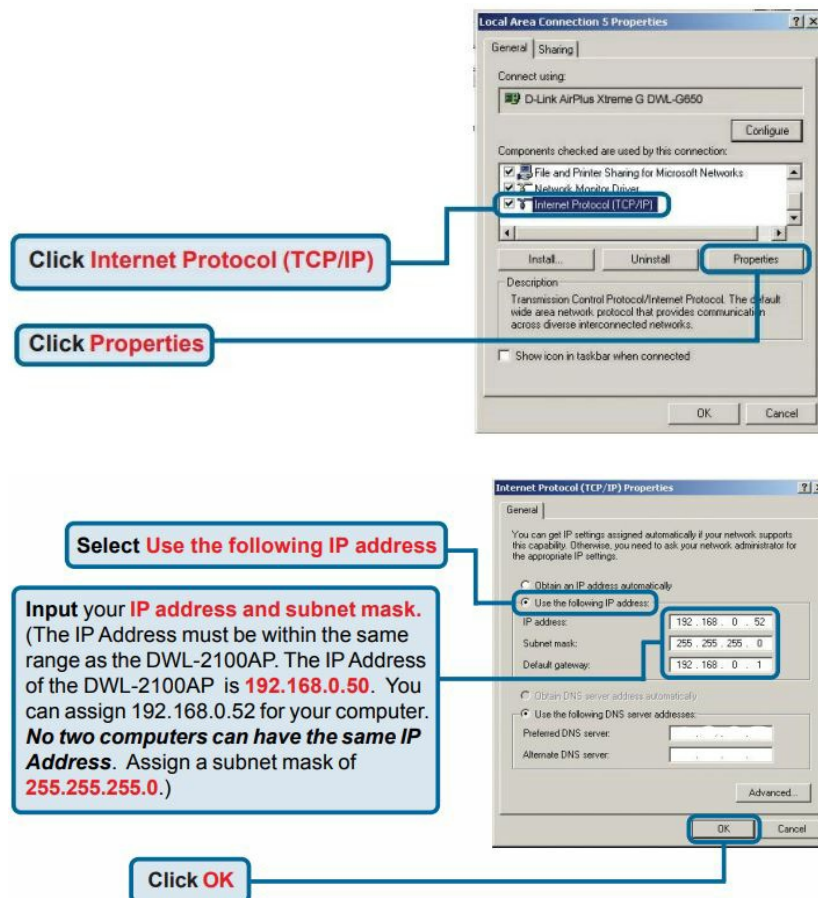
Assigning a Static IP Address in Windows To assign a Static IP Address to the laptop or computer that you are using to configure the DWL-2100AP, please do the following:

Go to Start > Double-click on Control Panel > Double-click on Network Connections > Right-click on Local Area Connections > Click Properties



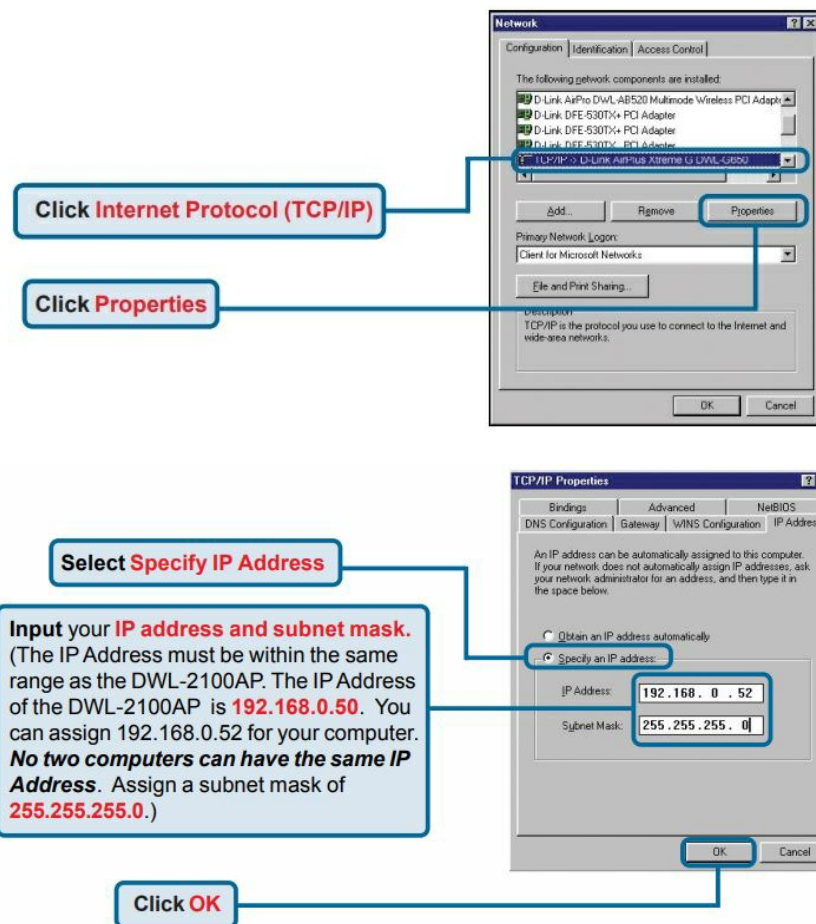
For Windows 2000 users:

Go to Start > Settings > Network and Dial-up Connections > Double-click on the Local Area Connection associated with the Network Adapter installed on your system> select Properties



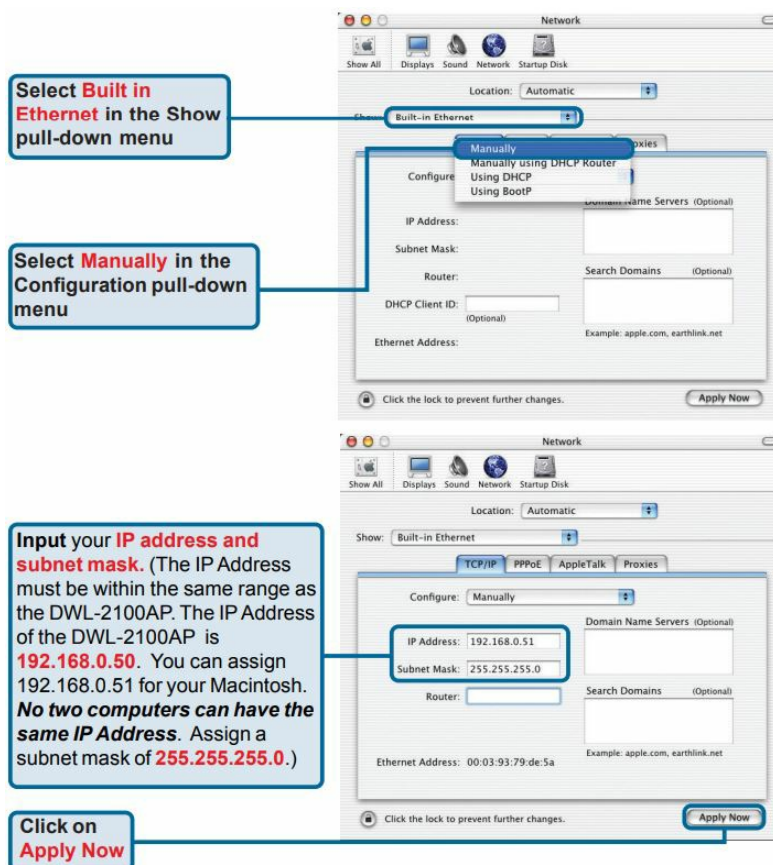
For Windows Me and 98se users:

Click Internet Protocol (TCP/IP) Go to Start > Settings > Control Panel > Double-click on the Local Area Connection associated with the Network Adapter installed on your system > select Properties



For Apple Macintosh OS X:

Go to the Apple Menu Click on Network and Select System Preferences



You can find software updates and user documentation on the D-Link website. D-Link provides free technical support for customers within the United States and within Canada for the duration of the warranty period on this product. U.S. and Canadian customers can contact D-Link technical support through our website, or by phone.

Tech Support for customers within the United States:

- **D-Link Technical Support over the Telephone:** (877) 453-5465 24 hours a day, seven days a week.
- **D-Link Technical Support over the Internet:** <http://support.dlink.com>
- **Email:** support@dlink.com

FAQ's

What is the D-Link DWL-2100AP Wireless G Access Point?

The D-Link DWL-2100AP is a Wireless G Access Point designed to provide wireless connectivity in homes and small businesses, allowing devices to connect to a wired network wirelessly.

What wireless standards does the DWL-2100AP support?

The DWL-2100AP supports the 802.11g wireless standard, providing fast wireless data transfer speeds up to 54 Mbps.

Can I use the DWL-2100AP to extend my existing wireless network?

Yes, the DWL-2100AP can be used as a wireless range extender to extend the coverage of your existing wireless network.

What security features are available with the DWL-2100AP?

The DWL-2100AP offers various security features, including WPA and WPA2 encryption, MAC address filtering, and support for RADIUS authentication to enhance network security.

Is it compatible with older 802.11b devices?

Yes, the DWL-2100AP is backward compatible with 802.11b devices, allowing older devices to connect to the network.

How many devices can the DWL-2100AP support simultaneously?

The DWL-2100AP can typically support multiple concurrent wireless connections, but the exact number may vary depending on network conditions and usage.

Can I configure the DWL-2100AP via a web interface?

Yes, the DWL-2100AP can be configured through a web-based interface, making it easy to set up and

manage.

What types of antennas does the DWL-2100AP have?

The DWL-2100AP typically features detachable external antennas, which can be upgraded or replaced to improve wireless coverage.

What is the maximum wireless range of the DWL-2100AP?

The wireless range of the DWL-2100AP can vary depending on factors like interference and obstructions, but it is designed for extended coverage within homes and small businesses.

Is the DWL-2100AP compatible with Power over Ethernet (PoE)?

Yes, some versions of the DWL-2100AP offer Power over Ethernet (PoE) support, allowing both data and power to be supplied through a single Ethernet cable for convenient installation.

Does the DWL-2100AP support Quality of Service (QoS)?

Yes, the DWL-2100AP typically supports Quality of Service (QoS) features to prioritize network traffic and ensure a better user experience for applications like video streaming and online gaming.

What is the warranty for the DWL-2100AP?

The DWL-2100AP usually comes with a manufacturer's warranty to provide assurance of product quality. Be sure to check the specific warranty details provided with your purchase.

Can I use multiple DWL-2100AP devices to create a wireless mesh network?

No, the DWL-2100AP is not designed for mesh networking. However, you can use multiple units to extend your wireless network's coverage.

References: [D-Link DWL-2100AP Wireless G Access Point – Device.report](#)