



# D-Link DWA-556 Xtreme N Desktop PCI Express Adapter Quick Install Guide

[Home](#) » [D-Link](#) » D-Link DWA-556 Xtreme N Desktop PCI Express Adapter Quick Install Guide 

## Contents

- [1 D-Link DWA-556 Xtreme N Desktop PCI Express Adapter](#)
- [2 System Requirements](#)
- [3 Package Contents](#)
- [4 Installation Considerations](#)
- [5 Hardware Installation](#)
- [6 Software Installation](#)
- [7 Connect to a Wireless Network](#)
- [8 Windows® XP Configuration Utility](#)
- [9 Technical Support](#)
- [10 FAQ's](#)
- [11 Related Posts](#)



**D-Link DWA-556 Xtreme N Desktop PCI Express Adapter**



## System Requirements

- A desktop computer with an available PCI Express slot
- Windows® 2000 (Service Pack 4) or XP (Service Pack 2)
- 300MHz processor and at least 64MB of RAM
- A draft 802.11n or 802.11g access point (for Infrastructure mode), or another draft 802.11n or 802.11g wireless adapter (for Ad-Hoc networking mode.)

## Package Contents



D-Link DWA-556  
Xtreme N™ Desktop Adapter



Manual, QIG, software,  
and warranty on CD

If any of the above items are missing, please contact your reseller.

## Installation Considerations

The D-Link wireless adapter lets you access your network using a wireless connection from virtually anywhere within the operating range of your wireless network. Keep in mind, however, that the number, thickness and

location of walls, ceilings, or other objects that the wireless signals must pass through, may limit the range. Typical ranges vary depending on the types of materials and background RF (radio frequency) noise in your home or business. The key to maximizing wireless range is to follow these basic guidelines:

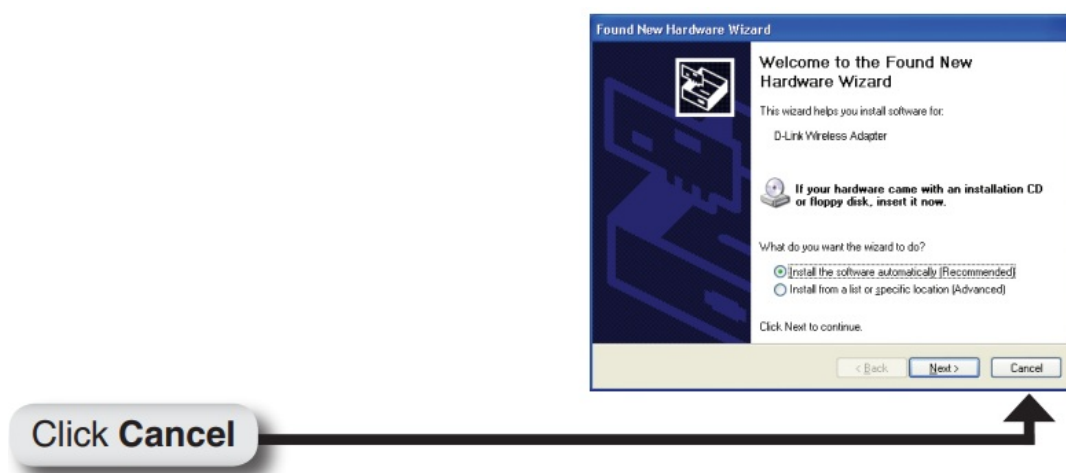
1. Keep the number of walls and ceilings between the D-Link adapter and other network devices to a minimum – each wall or ceiling can reduce your adapter's range from 3-90 feet (1-30 meters.) Position your devices so that the number of walls or ceilings is minimized.
2. Be aware of the direct line between network devices. A wall that is 1.5 feet thick (.5 meters), at a 45-degree angle appears to be almost 3 feet (1 meter) thick. At a 2-degree angle it looks over 42 feet (14 meters) thick! Position devices so that the signal will travel straight through a wall or ceiling (instead of at an angle) for better reception.
3. Building Materials make a difference. A solid metal door or aluminum studs may have a negative effect on range. Try to position access points, wireless routers, and computers so that the signal passes through drywall or open doorways. Materials and objects such as glass, steel, metal, walls with insulation, water (fish tanks), mirrors, file cabinets, brick, and concrete will degrade your wireless signal.
4. Keep your product away (at least 3-6 feet or 1-2 meters) from electrical devices or appliances that generate RF noise.
5. If you are using 2.4GHz cordless phones or X-10 (wireless products such as ceiling fans, lights, and home security systems), your wireless connection may degrade dramatically or drop completely. Make sure your 2.4GHz phone base is as far away from your wireless devices as possible. The base transmits a signal even if the phone is not in use.

## Hardware Installation

You will need to turn off your PC to install the card. Once your computer is turned off, unplug the power cord from the computer. Open the case and insert the D-Link adapter into an available PCI Express slot. Once inserted, close the case and insert the power cable into the computer. Turn on your computer.

**Note:** Before installing, write down the serial number and hardware revision (e.g. A1) in case you need to contact technical support.

When your computer boots up you may see the Found New Hardware wizard screen.



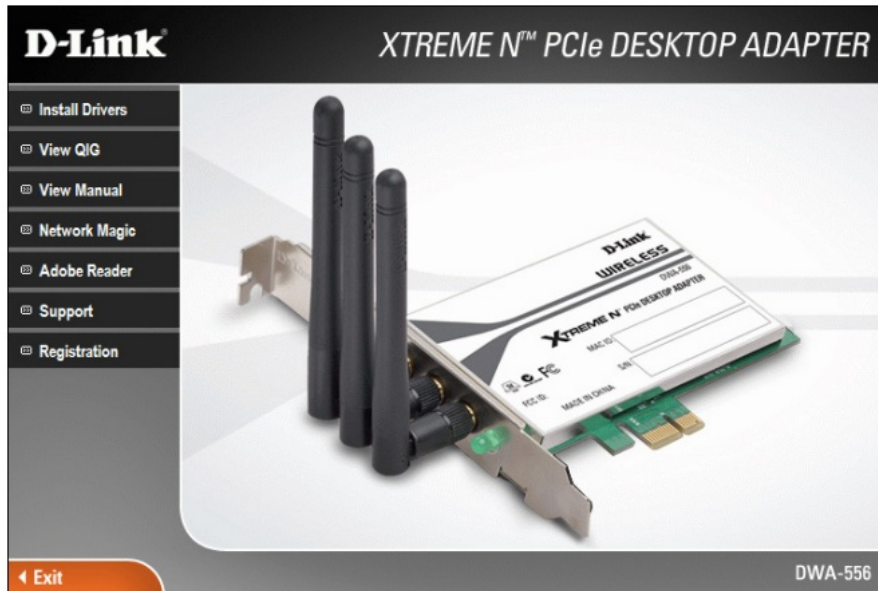
## Software Installation

**Note:** Please install the DWA-556 Desktop Adapter into your computer before installing the driver software from

the D-Link CD. Refer to page 5. When the “Add New Hardware” wizard appears, click Cancel.

Insert the D-Link DWA-556 Driver CD in the CD-ROM drive. The step-by-step instructions that follow are shown in Windows® XP. The steps and screens are similar for the other Windows operating systems. If the CD Autorun function does not automatically start on your computer, go to Start > Run. In the run box type “D:\DWA556.exe” (where D: represents the drive letter of your CD-ROM drive).

When the autorun screen appears, click Install Drivers.



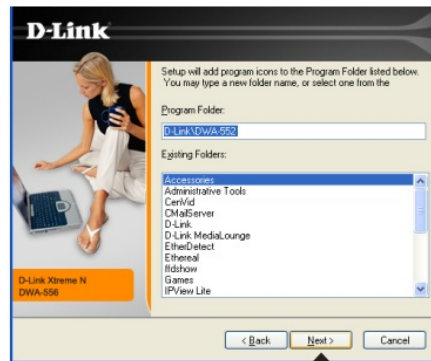
The InstallShield Wizard window will appear.



Setup will install to the default location: C:\Program Files\D-Link\ DWA-556, where C: represents the drive letter of your hard drive. To install to a different location click Browse and specify the location.



Click **Next**



Click **Next**

For Windows® XP: This Software Installation alert screen will appear.

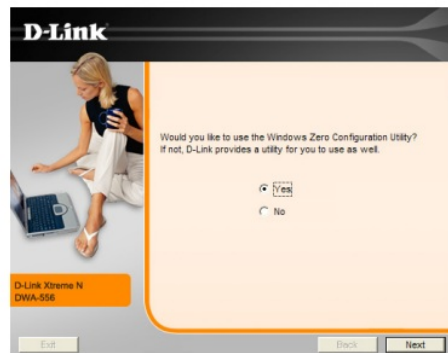


Click **Continue Anyway**



Click **Finish**

The D-Link Configuration Wizard will now appear. If you are using Windows® XP (SP2), you will have the option to use either the D-Link utility or the built-in Windows® Wireless utility.



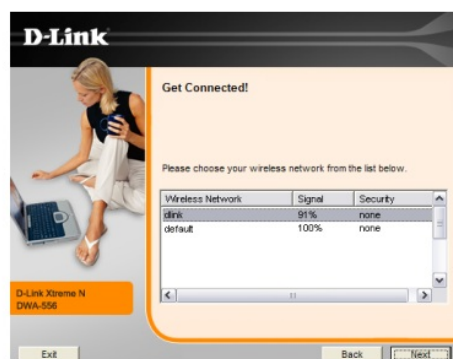
Click **Next**

Enter the network name (SSID) manually. If you enter the SSID incorrectly, you will automatically be brought to the site survey page. Click Scan to display the site survey page.



Click **Next**

Click on the network name (SSID) and click Next.



Click **Next**

Click Yes, I want to restart my computer now to finalize the installation.





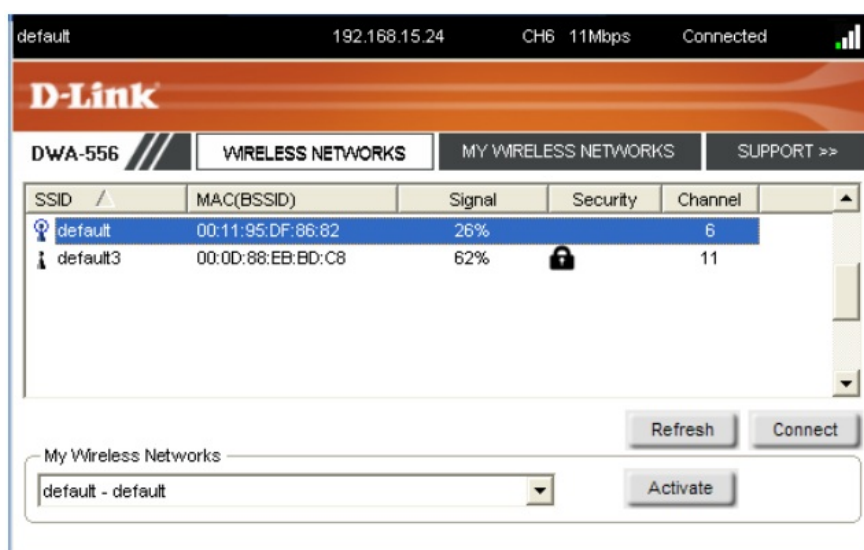
## Connect to a Wireless Network

The D-Link DWA-556 uses the Wireless Connection Manager as the management software. The manager provides the user an easy interface to change any settings related to the wireless adapter. After you have completed the installation of the DWA-556, the Wireless Connection Manager is loaded on your desktop. Double-click on the icon to start the Wireless Connection Manager.



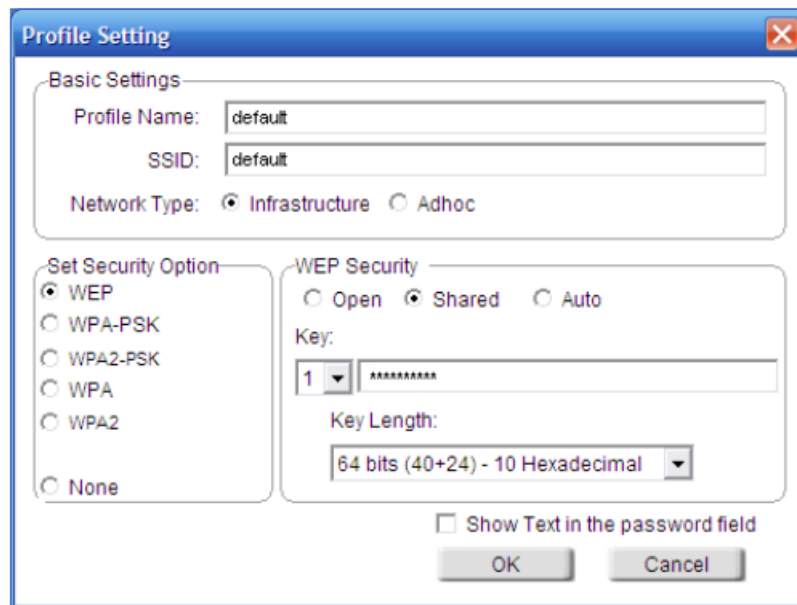
### If you are using Windows® XP.

This window will allow you to see available wireless networks in your area. Simply click the network (SSID) you want to connect to and click the Connect button.

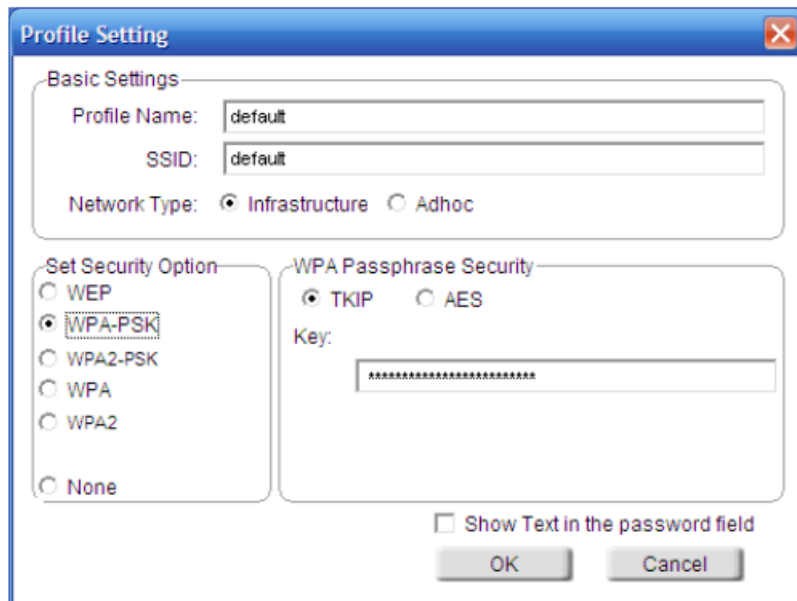


If you are attempting to connect to a secure network, You must supply the encryption key that is on the router or access point you are trying to connect to. Please refer to the manual on the CD for more information on Wireless Security.

If the network you are connecting to is using WEP, enter the WEP key for the network and click OK.



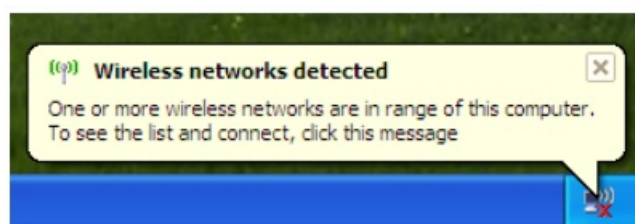
If the network you are connecting to is using WPA-PSK or WPA2-PSK, enter the passphrase for the network and click OK.



## Windows® XP Configuration Utility

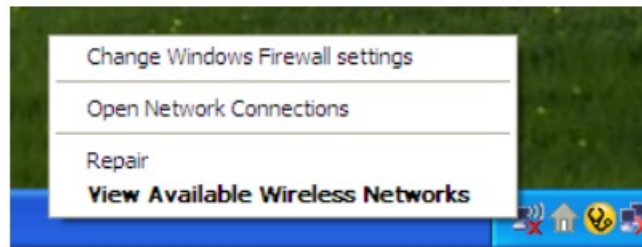
Windows® XP users may use the built-in wireless utility. The following instructions are for Service Pack 2 users. If you are using Windows® 2000, you must use the D-Link Wireless Connection Manager.

If you receive the Wireless Networks Detected bubble, click on the center of the bubble to access the utility.

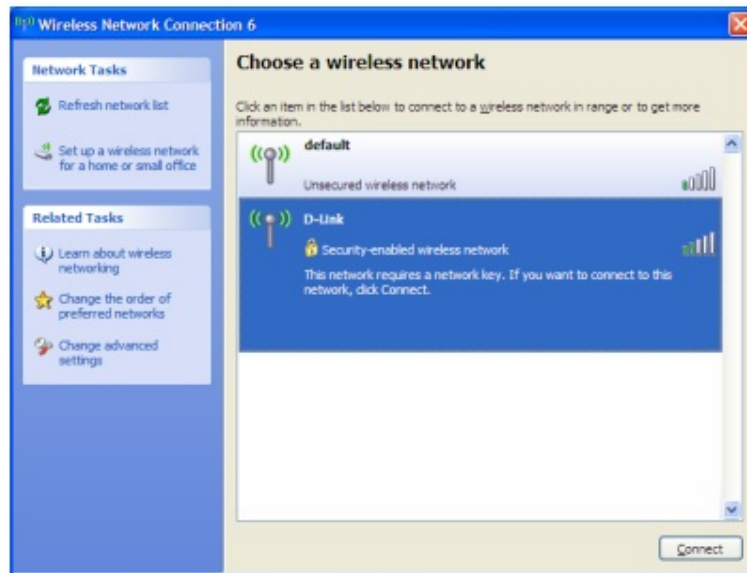


You may also right-click on the wireless computer icon in your system tray (lower-right corner next to the time). Select View Available Wireless Networks.





The utility will display any available wireless networks in your area. Click on a network and click the Connect button. Refer to the Wireless Security section in the manual for information on connecting to a secure network.



If you want to use the D-Link Wireless Connection Manager instead of the Windows® XP wireless utility, refer to page 23 in the user manual.

## Technical Support

D-Link's website contains the latest user documentation and software updates for D-Link products. U.S. and Canadian customers can contact D-Link Technical Support through our website or by phone.

### United States

- **Telephone:** (877) 453-5465
- **World Wide Web:** <http://support.dlink.com>

### Canada

- **Telephone:** (800) 361-5265
- **World Wide Web:** <http://support.dlink.com>

## Trademarks

Copyright ©2006 D-Link Corporation/D-Link Systems, Inc. All rights reserved. D-Link and the D-Link logo are registered trademarks of D-Link Corporation or its subsidiaries in the United States and other countries. Other trademarks are the property of their respective owners. This product is based on IEEE draft 802.11n specifications and is not guaranteed to be forward-compatible with future versions of IEEE 802.11n specifications.

Compatibility with draft 802.11n devices from other manufacturers is not guaranteed. All references to speed and range are for comparison purposes only. Product specifications, size, and shape are subject to change without notice, and actual product appearance may differ from that depicted herein.

## FAQ's

What is the D-Link DWA-556 Xtreme N Desktop PCI Express Adapter?

The D-Link DWA-556 Xtreme N Desktop PCI Express Adapter is a network adapter card designed to provide high-speed wireless connectivity for desktop computers. It allows desktop PCs to connect to Wi-Fi networks for internet access and local network connectivity.

What are the key features of the D-Link DWA-556 adapter?

The D-Link DWA-556 typically features Wireless N technology for faster wireless speeds, compatibility with various Wi-Fi standards, WPA/WPA2 encryption for security, and an easy-to-install PCI Express interface for desktop computers.

Is this adapter compatible with both Windows and Mac computers?

The D-Link DWA-556 adapter is often designed for Windows-based desktop computers. Mac compatibility may vary, so it's advisable to check the manufacturer's website for specific Mac driver availability.

What is the maximum wireless speed supported by this adapter?

The maximum wireless speed supported by the D-Link DWA-556 Xtreme N adapter can vary depending on factors like your Wi-Fi router's capabilities and network conditions. It often supports Wireless N speeds, which can reach up to 300 Mbps.

Does this adapter support dual-band Wi-Fi?

No, the D-Link DWA-556 Xtreme N adapter typically operates on the 2.4GHz band and does not support dual-band Wi-Fi (2.4GHz and 5GHz).

Is it compatible with older Wi-Fi standards like 802.11g and 802.11b?

Yes, this adapter is often backward compatible with older Wi-Fi standards like 802.11g and 802.11b, allowing it to connect to older Wi-Fi networks if needed.

What is the range of this wireless adapter?

The wireless range of the D-Link DWA-556 adapter can vary based on factors like interference and obstacles in your environment. In general, it can provide reliable wireless connectivity within a typical home or office environment.

Does it support WPA3 encryption for enhanced security?

WPA3 support may not be available on older models of this adapter. However, newer models or firmware updates may introduce WPA3 compatibility. Check the product documentation for specific security features.

Is there a driver CD included for installation?

Many D-Link DWA-556 adapters often come with a driver CD or include instructions for downloading drivers from the D-Link website. Proper installation of drivers is essential for the adapter to work correctly.

Does it support Wi-Fi Protected Setup (WPS) for easy network configuration?

Yes, this adapter often supports Wi-Fi Protected Setup (WPS), which simplifies the process of connecting to secure Wi-Fi networks by pressing a button or entering a PIN.

Can I use this adapter with a desktop computer that doesn't have a PCI Express slot?

No, the D-Link DWA-556 Xtreme N adapter is designed specifically for desktop computers with an available PCI Express slot. It cannot be used with computers that lack this slot.

Is there a warranty provided with this network adapter?

This network adapter often comes with a limited warranty. The duration and terms of the warranty may vary depending on your location and the retailer. Check the warranty information included with your purchase for details.

Can this adapter be used for gaming and streaming?

Yes, the D-Link DWA-556 Xtreme N adapter can be used for online gaming and streaming, provided your Wi-Fi network and internet connection support the required bandwidth and low latency for these activities.

**References:** [D-Link DWA-556 Xtreme N Desktop PCI Express Adapter – Device.report](#)