

D-Link DSR-250N Wireless N Unified Service Router



D-Link DSR-250N Wireless N Unified Service Router Quick Installation Guide

[Home](#) » [Support](#) » D-Link DSR-250N Wireless N Unified Service Router Quick Installation Guide 

Contents

- 1 D-Link DSR-250N Wireless N Unified Service Router
- 2 Product Overview
- 3 Default Interface Settings
- 4 Installing and Connecting the Device
- 5 Initially Configure the Device
- 6 Finalizing the Configuration
- 7 Additional Information
- 8 Technical Support
- 9 FAQs
- 10 Related Posts

D-Link

D-Link DSR-250N Wireless N Unified Service Router



About This Guide

This guide gives step by step instructions for setting up D-Link DSR-250 Services Router. Please note that the model you have purchased may appear slightly different from those shown in the illustrations.

Unpacking the Product

Open the shipping carton and carefully unpack its contents. Please consult the packing list located in following information to make sure all items are present and undamaged. If any item is missing or damaged, please contact your local D-Link reseller for replacement.

- One (1) DSR-250 Unified Services Router

Appliance

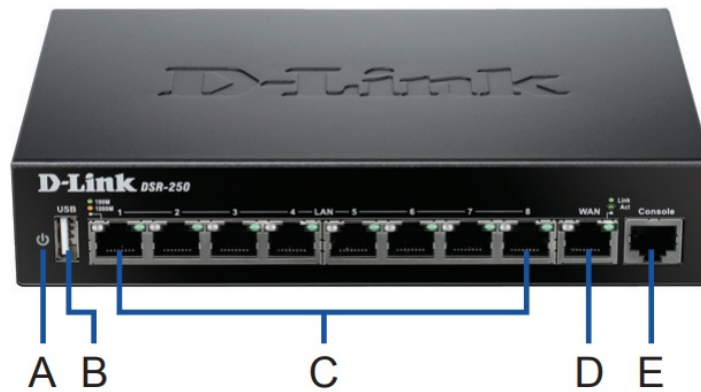
- One (1) 12V/1.5A Power Adapter
- One (1) Console Cable (RJ45-to-DB9 Cable)
- One (1) Ethernet (CAT5 UTP/Straight Through)

Cable

- One (1) Reference CD (CD-ROM containing product documentation in PDF format)

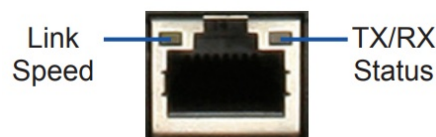
Product Overview

This chapter provides detailed descriptions of the DSR-250 device and its components.



Item	Feature	Description
A	LED (Top to bottom)	Power LED: Indicates the Services Router is powered on.
B	USB Port (1)	It can support various USB 1.1 or 2.0 devices below: 1. Flash Disk or Hard Disk for network sharing. 2. WCN Configuration (It will be supported by future firmware upgrade) 3. Printer (It will be supported by future firmware upgrade)
C	Gigabit LAN port (1-8)	Connect Ethernet devices, such as computers, switches and hubs.
D	Gigabit WAN port (1)	One auto MDI/MDIX WAN ports are the connection for the Ethernet cable to the cable or DSL modem.
E	Console Port (1)	Used to access Command Line Interface (CLI) via RJ45-to-D B9 console Cable.

Device Status LEDs and Ethernet Port LEDs



The device LEDs show information about current device status. When the device power up, the POWER/STATUS LED will show solid orange during power on process. Startup takes one minute approximately to complete, the LED will change to solid green. If you want to turn the device off and on again, we recommend you wait a few seconds between shutting it down and powering it back. The Ethernet LEDs show the status of each Ethernet port. Table 2 lists the name, color, status and description of each device LED.

LED Indicators	Color	Status	Description
Power / Status	Orange/ Green	Solid Orange	Device during power-on process
		Solid Green	Completion of power on
		Blinking Orange	Device is crashed and under recovery mode
		Blinking Green	The system is defective, such firmware upgrades fail.
		Light Off	The device is power-off
TX/RX Status	Green	Light Off	No Link.
		Solid Green	Link present.
		Blinking Green	Port is sending or receiving data.
LINK Speed	Green/ Orange	Light Off	Port is operating at 10Mbps.
		Solid Green	Port is operating at 100Mbps
		Solid Orange	Port is operating at 1000Mbps

Default Interface Settings

Ethernet Interface	Interface Type	IP Address	Web-Based Management	DHCP Client
LAN(1-8) / WLAN	Static IP	192.168.10.1	Enabled	Enabled
WAN	DHCP Client	0.0.0.0	Disabled	Disabled

Note: D-Link Services Routers only allow Web GUI access from LAN and WLAN interfaces by default for security reason.

Installing and Connecting the Device

This chapter describes how to connect cables and power to the device.

Before You Begin

Observe the following precautions to help prevent shutdowns, equipment failures and injuries:

Before installation, always check that the power supply is disconnected

- Ensure that the room in which you operate the device has adequate air circulation and that the room temperature does Not exceed 40°C (104°F)
- Allow 1 meter (3 feet) of clear space to the front and back of the device.
- Do not place the device in an equipment rack frame that blocks the air vents on the sides of the chassis. Ensure that enclosed racks have fans and louvered sides.
- Correct these hazardous conditions before any installation: moist or wet floors, leaks, ungrounded or frayed power cables, or missing safety grounds.

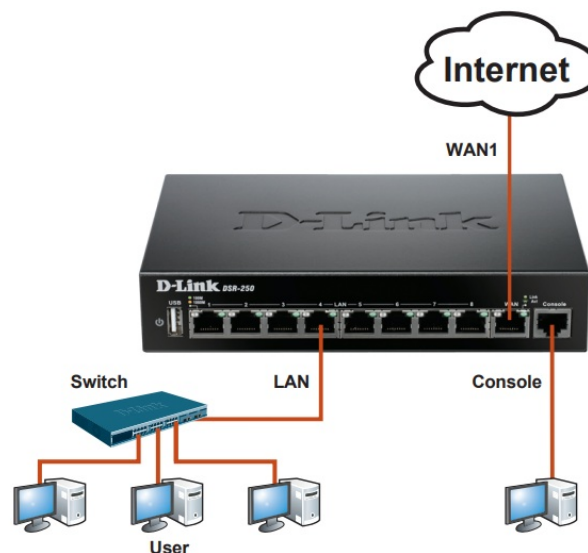
Connecting Power and Turn the Device On/Off

The AC/DC Power Adapter shipped with the device connects the device to earth ground when plugged an AC grounding-type power outlet. The device must be connected to earth ground during normal operation. To connect power to the device, plug the AC/DC power adapter into the DC power phone jet on the back panel of the device. Note: We recommend using a surge protector for the power connection. To power on the DSR-250 device, press the DC power switch on the rear panel to the on position. To power off the device, press the power switch to the off position.

Connecting the Device to a Network

This section provides basic information about physically connecting the DSR-250 to a network. To connect the necessary cables as shown in Figure 3.

1. Connect an RJ-45 cable from the port labeled WAN to the external router. The port WAN is pre-allocated to the WAN network segment.
2. Connect an RJ-45 cable from the port labeled LAN (1-8) to a switch in the LAN network segment.
3. Connect an RJ45-to-DB9 cable from the console port for CLI (Command Line Interface) management access.








Initially Configure the Device

The services router software is preinstalled on the DSR-250 device. When the device is powered on, it is ready to be configured. While the device has a default factory configuration that allow you to initially connect to the device, you must perform further configuration for your specific network requirements.

Using the WebUI

To use the WebUI, the workstation from which you are managing the device must initially be on the same subnetwork as the device.

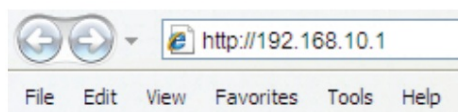
Browser		Version
	Microsoft Internet Explorer	6.0 and Later
	Mozilla Firefox	3.5 and Later
	Netscape Navigator	9.0 and Later
	Apple Safari	4.0 and Later
	Google Chrome	3.0 and Later

To access the device with the WebUI:

1. Connect your workstation on the port labeled LAN (1-8), which is pre-allocated to the LAN.
2. Ensure your workstation is DHCP Client enabled or configured with a static IP address in the 192.168.10.0/24 subnet.

Note: Disable pop-up blocking software or add the management IP address <http://192.168.10.1> to your pop-up blocker's allow list.

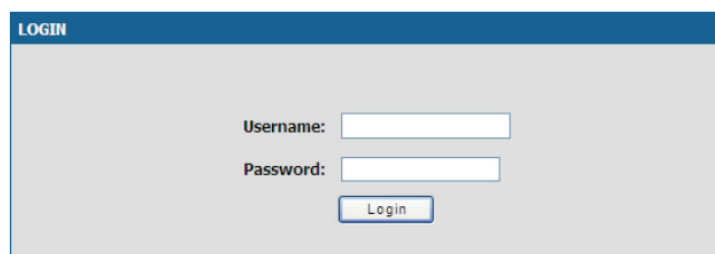
3. Launch your browser; enter the IP address for the LAN interface. (The factory default IP address is <http://192.168.10.1>), then press Enter.



4. Log on the Services Router Web Interface The default log on information is:

Username: admin

Password: admin

A screenshot of the Services Router Web Interface login page. The page has a blue header with the word "LOGIN" in white. Below the header, there is a light gray background. In the center, there are two input fields: "Username:" and "Password:". Below the "Password:" field, there is a blue "Login" button.

Using a Console Connection (RJ45-to-DB9 DCE)

The Services Router provides an serial port that enables a connection to a computer or terminal for monitoring

and configuring the device. This port is a RJ-45 connector, implemented as a data communication terminal equipment (DCE) connection.

To use the console port connection, you need the following equipment:

1. A terminal or a computer with both a serial port and the ability to emulate a terminal.
2. A RJ45-to-DB9 RS-232 with female connector. (Already included in packing list)
3. If your Laptop or PC doesn't have RS-232 connector, a converter is required.

Note: DSR-250 does not come with RS-232 converter and these must be purchased separately.

To establish a console connection:

1. Plug the RJ-45 connector of the supplied RJ45-to-DB9 cable directly to the console port on the Services Router.
2. Connect the other end of the cable to a terminal or to the serial connector of a computer running terminal emulation software. Set the terminal emulation software as following:
 - **Baud rate:** 115200
 - **Data bits:** 8
 - **Parity:** None
 - **Stop bits:** 1
 - **Flow control:** None
3. When you have correctly set up the terminal, having previously followed the instructions in section "Connecting Power and Turn the Device On/Off" then switch on your device. The boot sequence appears in the terminal.
4. Once the boot sequence completes, the command prompt is displayed, the device is ready to be configured.

Finalizing the Configuration

After initial setup, you should refer to the companion publications found in PDF format on the accompanying master CD for more information on how to begin to configure the DSR-250 device.

D-Link Services Router User Manual

This document describes the general operation and control of the Services Router firmware which drives and controls the Services Router series hardware. It includes examples of how to carry out typical administrative tasks such as setting up a VPN and how to use Services Router series in various scenarios.

D-Link Service Router Log Reference Guide

This document describes all log messages that might be generated by Services Router during system operation.

D-Link Services Router CLI Reference Guide

This document describes all available text-based commands that can be used on RJ45-to-DB9 Console or SSH interface to configure Services Router during system operation.

Additional Information

Additional help is available through D-Link worldwide offices listed at the appendix of the User Manual or online. To know more about D-Link security product products or marketing information, please visit the website <http://mydsr.dlink.com.tw>; for any support issue, please visit the website <http://support.dlink.com.tw>, which will redirect you to appropriate local D-Link website.

Technical Support

United Kingdom (Mon-Fri)

website: <http://www.dlink.co.uk>

FTP: <ftp://ftp.dlink.co.uk>

Home Wireless/Broadband 0871 873 3000 (9.00am–06.00pm, Sat 10.00am-02.00pm) Managed, Smart, & Wireless Switches, or Firewalls 0871 873 0909 (09.00am- 05.30pm) (BT 10ppm, other carriers may vary.) Ireland (Mon-Fri) All Products 1890 886 899 (09.00am-06.00pm, Sat 10.00am-02.00pm)

Phone rates: €0.05ppm peak, €0.045ppm off peak times

FAQs

What is the D-Link DSR-250N router?

The D-Link DSR-250N is a Wireless N Unified Service Router designed for small to medium-sized businesses. It provides network connectivity, security, and management features.

What is the main purpose of the DSR-250N router?

The main purpose of the DSR-250N router is to serve as a central networking device that provides internet connectivity, routing, security, and VPN (Virtual Private Network) capabilities for your business network.

What wireless standard does the DSR-250N support?

The DSR-250N supports the Wireless N (802.11n) standard, providing wireless connectivity for your devices with improved speed and coverage.

Is the DSR-250N suitable for home use?

The DSR-250N is primarily designed for business use due to its advanced networking and security features. It may be more than what is required for a typical home network.

Can I set up a Virtual Private Network (VPN) with the DSR-250N?

Yes, the DSR-250N supports VPN functionality, allowing you to create secure and encrypted connections for remote users or branch offices to access your network.

What security features does the DSR-250N offer?

The DSR-250N includes a range of security features, such as firewall protection, intrusion prevention, content filtering, and VPN support to safeguard your network against threats.

How many LAN ports does the router have?

The DSR-250N router typically has multiple LAN ports, usually four or more, to connect wired devices to your network.

Is the DSR-250N rack-mountable?

The DSR-250N is not typically rack-mountable. It is designed to be placed on a desktop or shelf.

What kind of management features does the router provide?

The router usually offers web-based management features that allow you to configure and monitor your network settings, security, and connected devices.

Is there a warranty for the DSR-250N router?

The D-Link DSR-250N router typically comes with a warranty of limited lifetime from the date of purchase.

Can I use the DSR-250N router as a VPN server?

Yes, the DSR-250N can act as a VPN server, allowing remote clients to securely connect to your network over the internet.

Does the router support Quality of Service (QoS)?

Yes, the DSR-250N typically supports QoS features, allowing you to prioritize certain types of network traffic for better performance, such as VoIP calls or video streaming.

Download This PDF Link: [D-Link DSR-250N Wireless N Unified Service Router Quick Installation Guide](#)
