

D-Link DSL-G664T Wireless ADSL Router



# D-Link DSL-G664T Wireless ADSL Router Quick Installation Guide

[Home](#) » [Support](#) » D-Link DSL-G664T Wireless ADSL Router Quick Installation Guide 

## Contents

- [1 D-Link DSL-G664T Wireless ADSL Router](#)
- [2 Before You Begin](#)
- [3 Check Your Package Contents](#)
- [4 Connecting the Router to your Computer](#)
- [5 Configure IP Settings](#)
- [6 Web Configuration Utility](#)
- [7 Configuring the WAN Connection](#)
- [8 Wireless Configuration](#)
- [9 FAQs](#)
- [10 References](#)



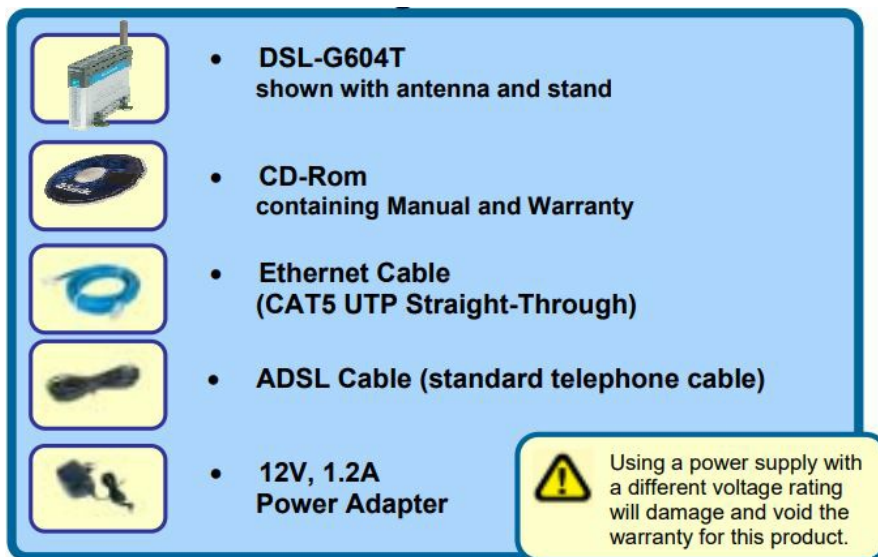
**D-Link DSL-G664T Wireless ADSL Router**



## **Before You Begin**

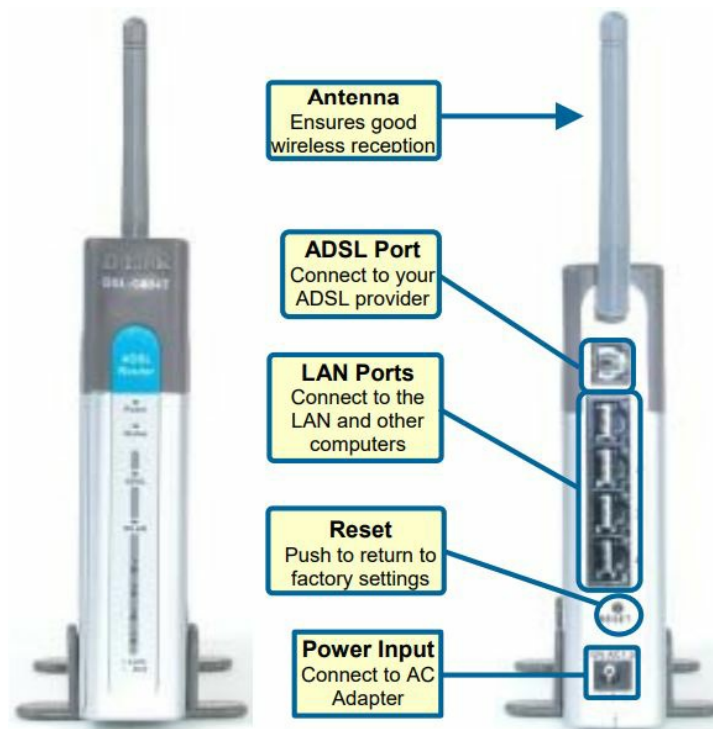
1. If you purchased this Router to share your high-speed Internet connection with other computers, you must have an established Internet account from an Internet Service Provider (ISP).
2. It's best to use the same computer that is connected to your router for configuring the DSL-G604T Wireless ADSL Router. The DSL-G604T acts as a DHCP server and will assign all the necessary IP address information on your network. See at the Quick Installation Guide or the Manual on the CD-ROM for setting each network adapter to automatically obtain an IP address.

## **Check Your Package Contents**



If any of the above items is missing, please contact your reseller.

## Connecting the Router to your Computer



- A. First, connect the power adapter to the power input at the back panel of the DSL-G604T and then plug the other end of the power adapter to a wall outlet or power strip. On the front of the device, the Power LED will turn ON to indicate proper operation.
- B. Insert one end of the cable into an Ethernet (LAN) port on the back panel of the DSL-G604T and the other end of the cable to an Ethernet Adapter or available Ethernet port on your computer.
- C. Insert the telephone cable included with the Router into the ADSL port, then connect the cable to your telephone line.
- D. Check the LED display on the front of the Router to confirm that the connections have been made.

## Configure IP Settings

To connect to the network, make sure the network adapter in your computer is configured properly. Here's how to configure the network adapter to obtain an IP address automatically for the DSL-G604T Wireless ADSL Router.

### For Microsoft Windows XP

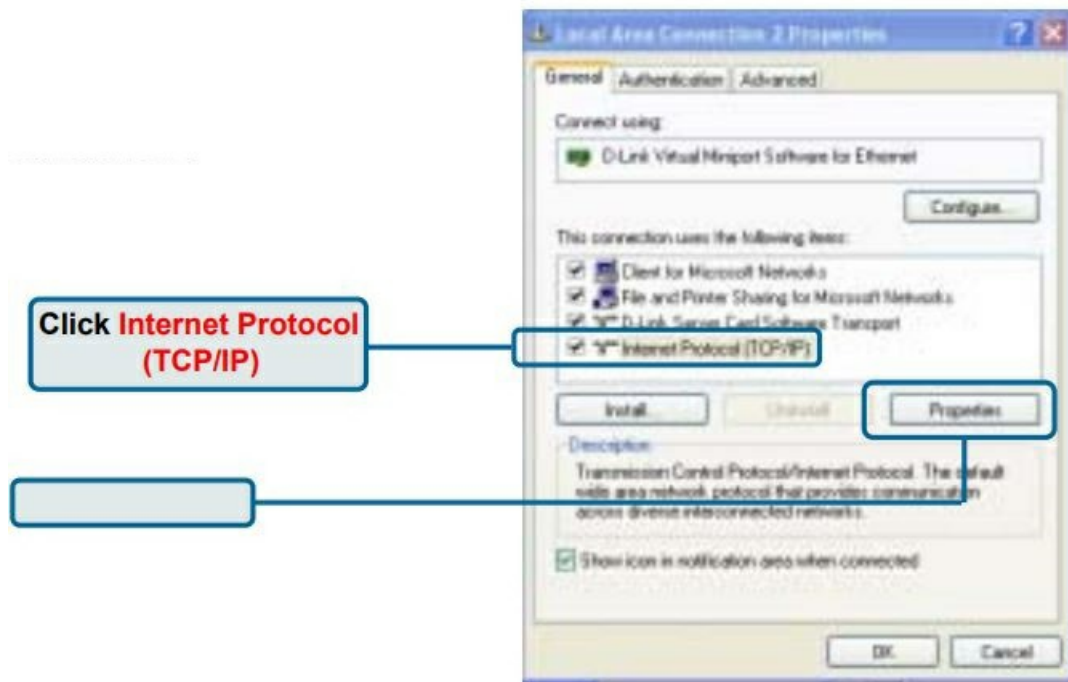
Go to Start > select Settings > click Control Panel > Double-click on the Network Connections icon



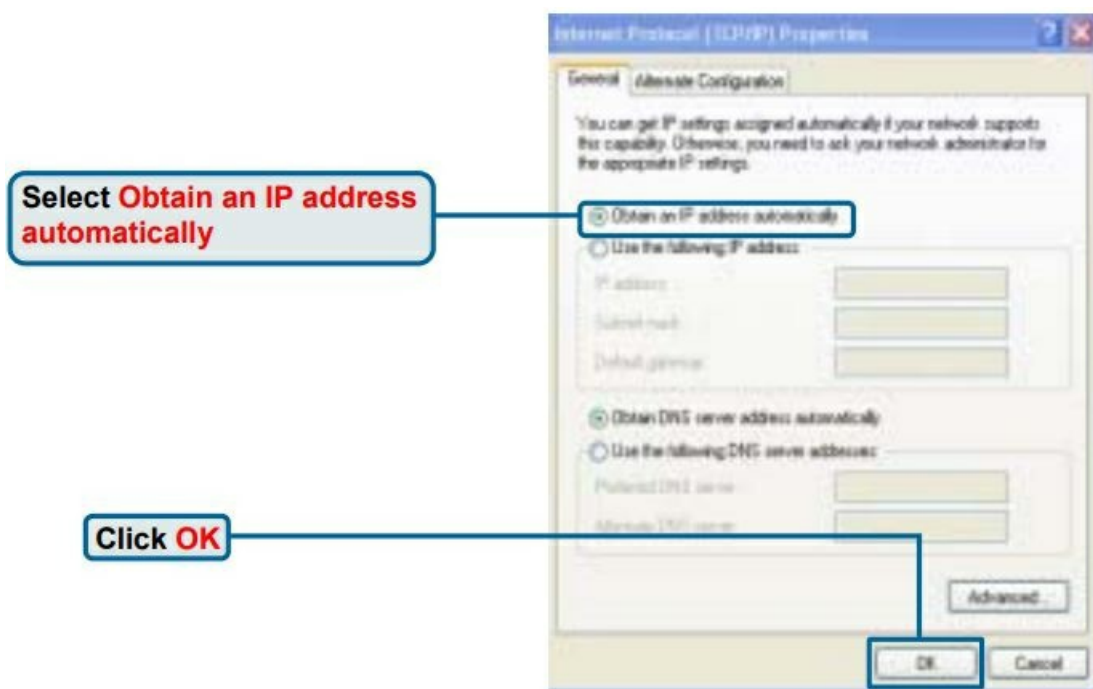
Right-click the Local Area Connection icon, and then select Properties.



The dialog box displays with a list of currently installed network items.



Make the choice to get IP settings assigned automatically.

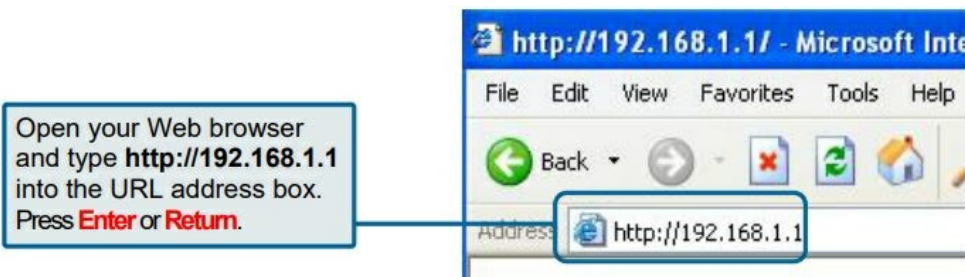


### Connecting Additional Computers To The DSL-G604T Wireless ADSL Router

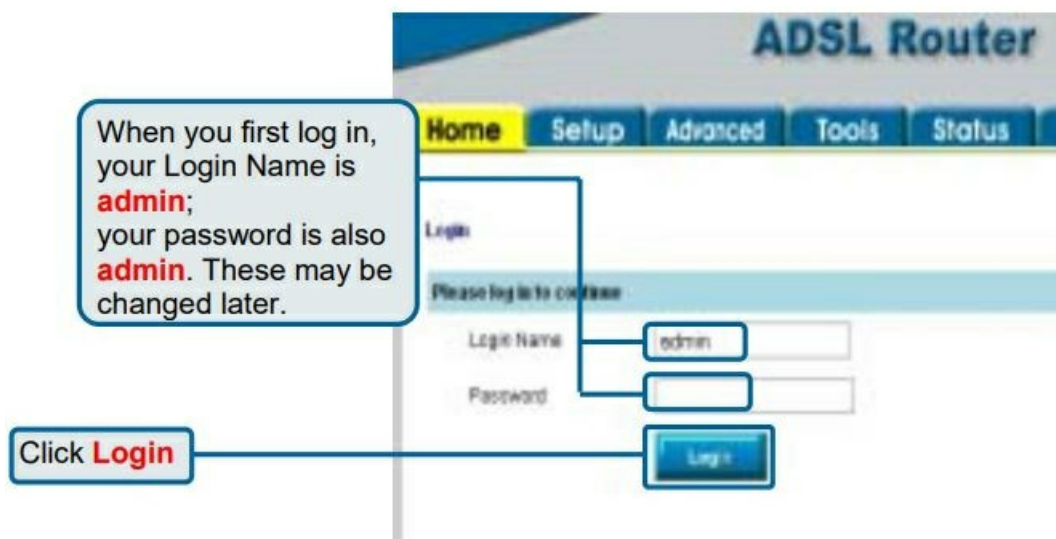
Using additional Ethernet (CAT5 UTP) cables, connect your Ethernet-equipped computers to the LAN ports on the back panel of the DSL-G604T. When you have completed the steps in this Quick Installation Guide, your connected network should look similar to this:



## Web Configuration Utility



The Home/Login page appears.



The Home screen appears. Click on the Setup tab to bring up the Setup menu.





Click the Connection 1 button to go to the configuration menu to make the Internet connection.



## Configuring the WAN Connection

In the Connection 1 window, type the Username and Password used to verify the identity of your ISP account. Click the Apply button when you have entered the information.



## Configure Connection 1 for PPPoE

PPP or Point-to-Point protocol is a standard method of establishing a network connection/session between networked devices. It may be worthwhile for the user to change the default name of Connection 1 to something that states what connection type is being used, for example, WAN\_PPPoA, the name used in the example below. Notice the VPI and VCI values are included in the name. It is not functionally necessary to change the name of the connection, this is done merely to provide descriptive reference.

The screenshot shows the D-Link ADSL Router web interface. The top navigation bar includes 'Home', 'Setup' (highlighted), 'Advanced', 'Tools', 'Status', and 'Help'. On the left sidebar, there are buttons for 'Wireless', 'LAN Setup', 'WAN Setup', 'Connection 1', and 'Logout'. The main content area is titled 'PPPoE Connection Setup'. It contains the following fields and options:

- Name:** WAN\_PPPoA
- Type:** PPPoE (selected from a dropdown)
- Options:** ☒ NAT ☒ Firewall
- PPP Settings:**
  - Username:** username
  - Password:** \*\*\*\*
  - Idle Timeout:** 300 min
  - Keep Alive:** 10 min
  - MTU:** 1452 bytes
  - Set Router:** ☒
  - Enable MTU:** ☐ Debug ☐
- PVC Settings:**
  - VPI:** 8
  - VCI:** 35
  - QoS:** UBR
  - PCR:** type
  - SCR:** type

At the bottom of the form are three buttons: 'Apply' (green checkmark), 'Delete' (red X), and 'Cancel' (orange X).

To configure Connection 1 for PPPoE, follow the steps listed below. Some of the settings do not need to be changed the first time the device is set up, but can be changed later if you choose.

1. Click the Connection 1 button under WAN Setup to view the default PPPoA Connection Setup configuration menu.
2. Select PPPoE from the Type: pull-down menu. The menu will blink momentarily
3. Type in a Name: for the connection or use the default name in the space provided (WAN\_PPPoA used in the above example).
4. Under Options, enable NAT and/or Firewall by selecting the corresponding selection box.
5. If you are told to change the VPI or VCI values, type in the values given to you by your service provider. Many users will be able to use the default settings.
6. Leave the default QoS values if you are unsure or the ISP did not provide this information.
7. Do not change the PCR or SCR values unless you are required to do so. If you are told to change these, type in the values given to you by your service provider.
8. Type the Username and Password used to verify the identity of your account. Typically, the Username is an account number assigned by your ISP and appears in the form account#@ [serviceprovider.com](#), while the Password may have been chosen by the account holder. For most users, the remaining settings will not need to be changed. See your ISP for further information.
9. Click the Apply button when you have entered all the information. The web browser will briefly go blank. You are now finished changing setting for the primary WAN connection known as Connection 1. It is now necessary to save the changes you just made and restart the Router.
10. To save the changes made to Connection 1, click the Tools tab and then click on the System Commands

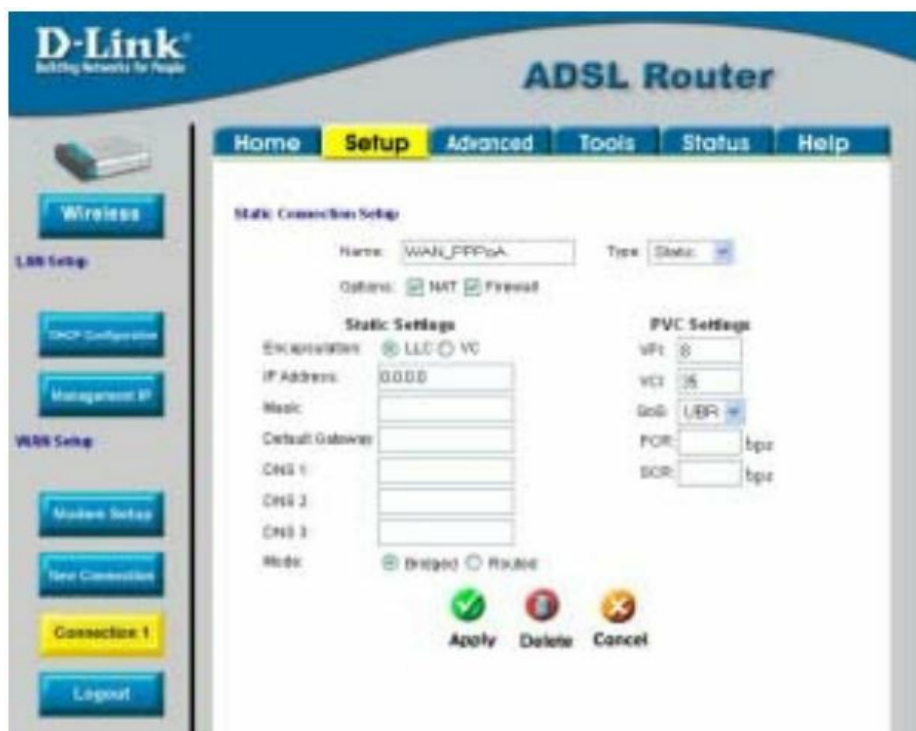


button. Click on the Save All button to store the configuration settings. Click on Back button to return to the System Commands menu.

Check the WAN connection status. Click the Status tab and then the Connection Status button. Look under WAN to view the State of Connection 1, it should read Connected. If the WAN connection state does not appear to Connected after a few minutes, go back to the Connection 1 Setup menu, check the settings and make sure they are correct.

### Configure Connection 1 for PPPoA

PPP or Point-to-Point protocol is a standard method of establishing a network connection/session between networked devices. Different forms of PPP include PPPoA and PPPoE (discussed below) involve an authentication process that requires a username and password to gain access to the network. PPPoA (PPP over ATM) as described in RFC 2364, is a method of using PPP on an ATM network. ATM is used for many types of telecommunications services including ADSL. To configure the WAN connection for PPPoA, perform the steps listed below. Some of the settings do not need to be changed the first time the device is set up, but can be changed later if you choose.



To configure the default connection type (PPPoA) for Connection 1, follow the steps listed below. To change the connection type of Connection 1 to an alternative type follow the instructions according to the desired type as described below in Change the Connection Type.

1. Click the Connection 1 button under WAN Setup to view the PPPoA Connection Setup menu pictured in the example above.
2. Type in a Name (WAN\_PPPoA has been entered here) for the connection or use the default name in the space provided.
3. Under Options, enable NAT and/or Firewall by selecting the corresponding selection box.
4. If you are told to change the VPI or VCI values, type in the values given to you by your service provider. Many users will be able to use the default settings.
5. Leave the default QoS values if you are unsure or the ISP did not provide this information.
6. Do not change the PCR or SCR values unless you are required to do so. If you are told to change these, type in the values given to you by your service provider.

7. Type the Username and Password used to verify the identity of your account. Typically, the Username is an account number assigned by your ISP and appears in the form account#@ [serviceprovider.com](#), while the Password may have been chosen by the account holder. For most users, the remaining settings will not need to be changed. See your ISP for further information.
8. Click the Apply button when you have entered all the information. The web browser will briefly go blank. You are now finished changing setting for the primary WAN connection known as Connection 1. It is now necessary to save the changes you just made and restart the Router.
9. To save the changes made to Connection 1, click the Tools tab and then click on the System Commands button. Click on the Save All button to store the configuration settings. Click on Back button to return to the System Commands menu.
10. Check the WAN connection status. Click the Status tab and then the Connection Status button. Look under WAN to view the State of Connection 1, it should read Connected. If the WAN connection state does not appear to be Connected after a few minutes, go back to the Connection 1 Setup menu, check the settings and make sure they are correct.

### Change the Connection Type

The default connection protocol used for the Router is Point-to-Point Protocol over ATM (PPPoA). The menu used to configure a PPPoA connection is the first menu to appear when you click on the Connection 1 button in the Setup menu. The alternative connection types supported by the Router are the PPPoE (PPP over Ethernet), CLIP (Classical IP over ATM or IPoA), DHCP (for WAN), Static (IP for WAN), and Bridge connection types. There are two ways you may configure the WAN connection to use these alternative types. You can create a New Connection using the alternative connection type or you may configure the Connection 1 settings to use the connection type of choice.

### Wireless Configuration

Now, click on the Wireless button. This window will appear.



For first-time setup, accept the default settings for SSID and Channel, and bypass security by clicking None. These settings may be changed later by following the instructions as given in the User's Guide.

**Important Note:** This Quick Installation Guide is designed to allow a first-time user to install and operate the Router easily, in order to ensure that everything is in working order. For more advanced configuration settings, particularly to do with security parameters, please consult the User's Guide that accompanies the Router.

### Trademarks

©2004 D-Link Systems, Inc. All rights reserved. Trademarks or registered trademarks are the property of their

respective holders. Software and specifications are subject to change without notice. DSL-G604T Wireless ADSL Router

## FAQs

What is the wireless standard supported by the D-Link DSL-G664T Router?

The D-Link DSL-G664T supports the 802.11g wireless standard.

Does the D-Link DSL-G664T come with built-in ADSL modem?

Yes, it has a built-in ADSL modem to connect directly to a DSL broadband service.

How many Ethernet ports does the D-Link DSL-G664T have?

Typically, the D-Link DSL-G664T comes with four Ethernet LAN ports for wired connections.

Can I set up a secure Wi-Fi network with the D-Link DSL-G664T?

Yes, the router allows you to set up a secure Wi-Fi network with WPA/WPA2 encryption.

Does the D-Link DSL-G664T support VPN pass-through?

Most D-Link routers support VPN pass-through for secure remote connections, but please check this model's specifications for confirmation.

Is the D-Link DSL-G664T router suitable for online gaming?

The router is suitable for online gaming, providing a stable connection through both wired and wireless connections.

Can I control bandwidth or prioritize traffic with the D-Link DSL-G664T?

This router may offer Quality of Service (QoS) settings to control bandwidth and prioritize traffic, depending on the firmware version.

What is the range of the D-Link DSL-G664T wireless signal?

The wireless range can vary based on environmental factors, but the 802.11g standard typically covers up to 120 feet indoors.

Can I use the D-Link DSL-G664T as a repeater or bridge?

Some D-Link routers have repeater or bridge mode capabilities. You'll need to check the specifications for

this particular model.

Does the D-Link DSL-G664T support guest Wi-Fi access?

Guest network capabilities depend on the router's firmware features. Please review the product's user guide for details.

Is the D-Link DSL-G664T compatible with DSL-AC services?

Compatibility with DSL-AC services should be confirmed with the service provider and by checking the router's specifications.

What kind of firewall is included with the D-Link DSL-G664T?

The router includes a built-in NAT firewall to protect your network from potential threats.

**Download This PDF Link:** [D-Link DSL-G664T Wireless ADSL Router Quick Installation Guide](#)

---

## References

- [User Manual](#)