



D-Link DP-301U Fast Ethernet USB Print Server Quick Installation Guide

[Home](#) » [Support](#) » D-Link DP-301U Fast Ethernet USB Print Server Quick Installation Guide 

Contents

- [1 D-Link DP-301U Fast Ethernet USB Print Server](#)
- [2 Before You Begin](#)
- [3 Check Your Package Contents](#)
- [4 Connecting The DP-301U To Your Network](#)
- [5 Your Setup is Complete!](#)
- [6 Technical Support](#)
- [7 FAQ's](#)
- [8 Related Posts](#)



D-Link DP-301U Fast Ethernet USB Print Server

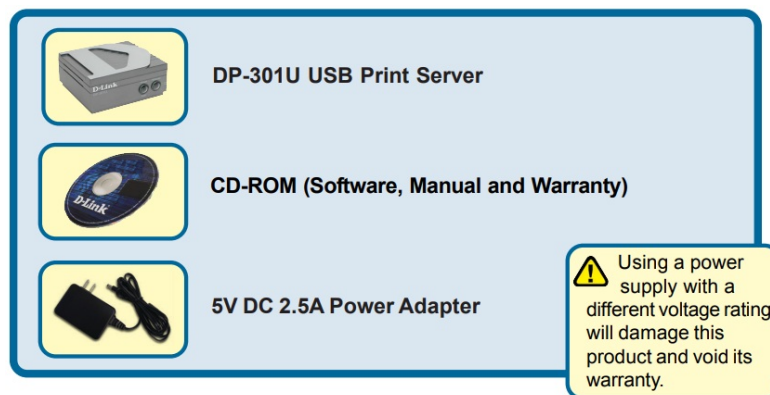


Before You Begin

You will need an Ethernet-enabled device, such as a laptop or desktop computer and a USB or parallel-port printer that will connect to the DP-300U.

Important: TURN OFF the power to the printer before installing the DP-301U.

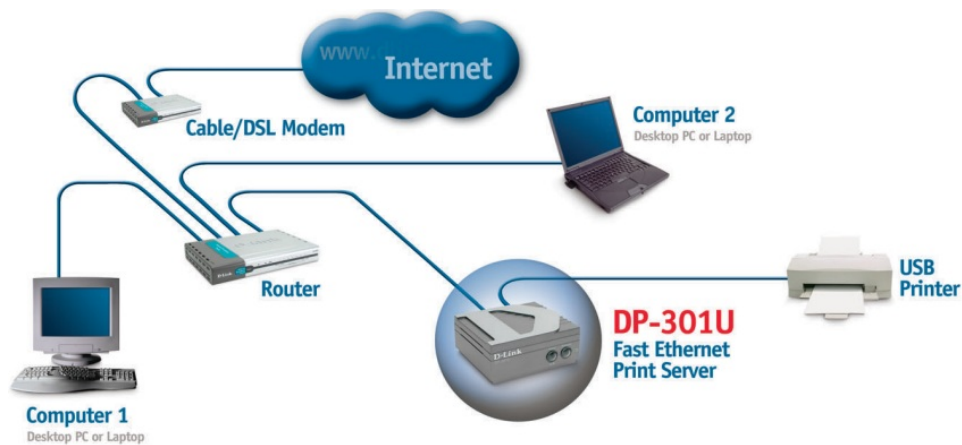
Check Your Package Contents



If any of the above items are missing, please contact your reseller.

Connecting The DP-301U To Your Network

First, insert one end of a straight-through CAT5 Ethernet RJ-45 cable into the “Network Port” (shown below.) Connect the other end of the cable to the LAN port of the gateway or switch. Note: Do not connect the power cord to the DP-301U until you are advised to do so.



Warning! Only a USB printer may be connected to the USB port of the DP-301U. Do not connect any other USB device to the USB port; to do so may damage the unit, voiding the warranty for this product.

Next, make sure that the Printer is turned OFF. Using the USB cable, connect one end of the cable to the USB port of the DP-301U (shown below) and the other end to the USB port of the printer. Turn ON the printer.



Then, plug one end of the power adapter into the DP-301U and the other end into your electric outlet. The DP-301U will turn on and begin a self-test.

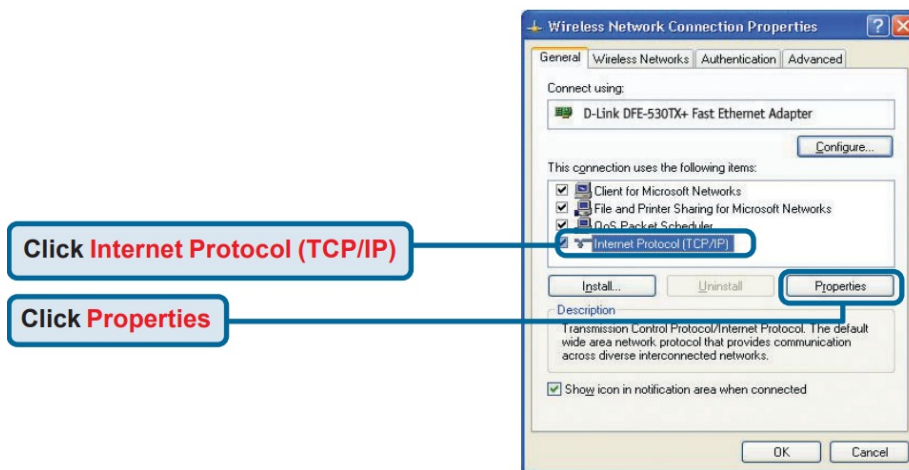
Warning: For Mac OS printing, please refer to manual (.pdf) located on the CD-ROM.

Setting up your DP-301U for network printing in Windows XP

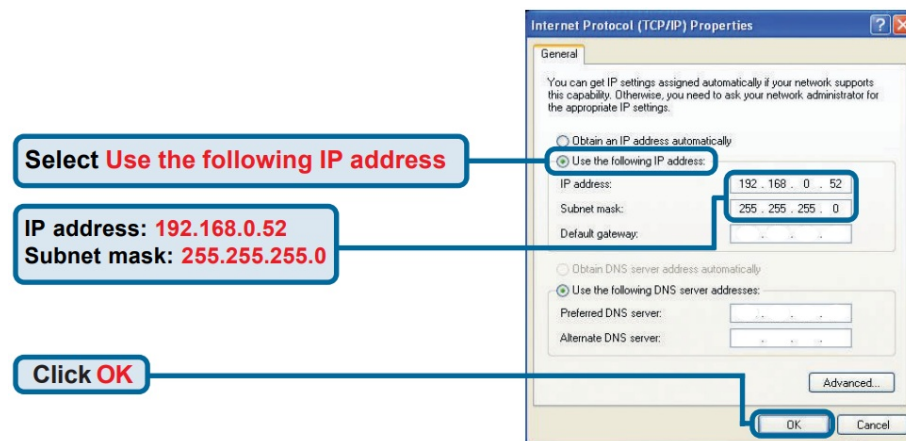
For additional Windows operating system setup or information on the web management interface, refer to the manual located on the CD-ROM.

The factory default IP address of the DP-301U is 192.168.0.10. In order to network to the printer through the DP-301U, the DP-301U must have the same IP network settings as your network. IP address can be assigned manually or automatically by DHCP, BOOTP or RARP. To access the print server's web configuration, manually assign an IP address on one of the PC's on your network to the same subnet as the print server.

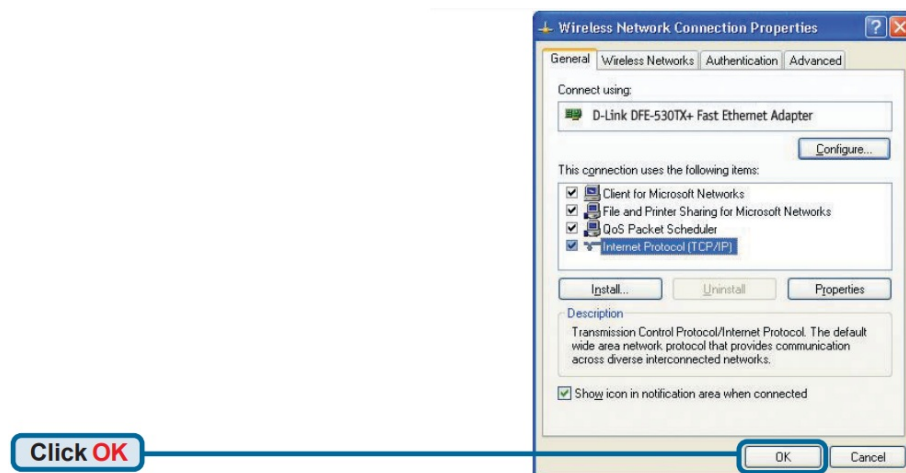
Go to Start > right click on My Network Places > select Properties > Double-click on the Network Connection associated with your Network Adapter.



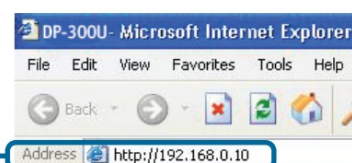
Input a static IP address in the same range as the print server.



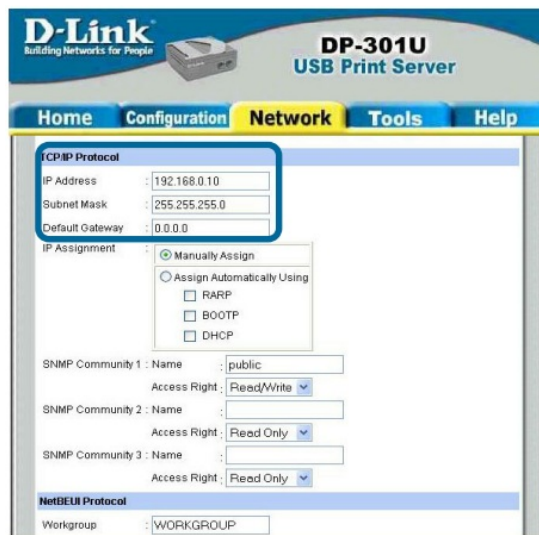
Click OK to apply IP address settings.



Using your web browser enter the IP address of the DP-301U. By default the IP address is set to 192.168.0.10



The IP address of the DP-301U can be modified on the Network tab of the web configuration menu. The following instructions use the print server's default IP address as an example. Make the appropriate changes if you modify the DP-301U's IP address.



D-Link
Building Networks for People

DP-301U
USB Print Server

Home Configuration **Network** Tools Help

ICP/IP Protocol

IP Address : 192.168.0.10
Subnet Mask : 255.255.255.0
Default Gateway : 0.0.0.0

IP Assignment : ☒ Manually Assign
☐ Assign Automatically Using
☐ RARP
☐ BOOTP
☐ DHCP

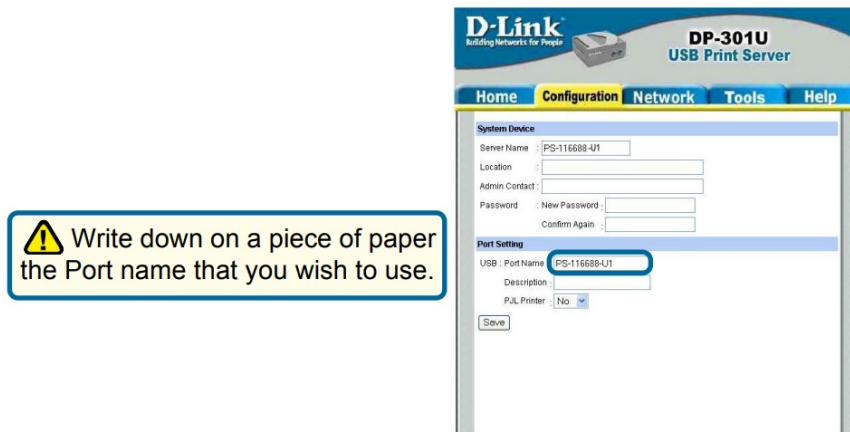
SNMP Community 1 : Name : public
Access Right : Read/Write
SNMP Community 2 : Name :
Access Right : Read Only
SNMP Community 3 : Name :
Access Right : Read Only

NetBEUI Protocol

Workgroup : WORKGROUP

Click on the Configuration tab to view the current Port Settings.

Warning: Write down on a piece of paper the Port name that you wish to use.



D-Link
Building Networks for People

DP-301U
USB Print Server

Home Configuration **Network** Tools Help

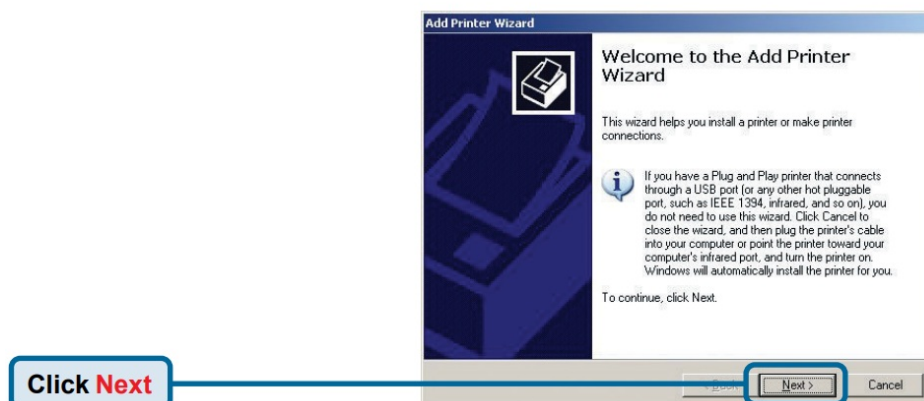
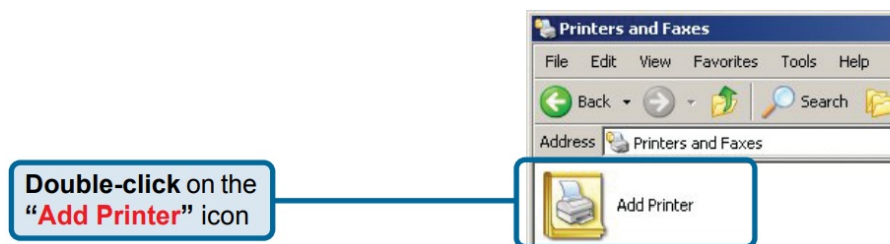
System Device

Serial Name : PS-116688-U1
Location :
Admin Contact :
Password : New Password :
Confirm Again :
Port Setting
USB : Port Name : PS-116688-U1
Description :
PUL Printer : No
Save

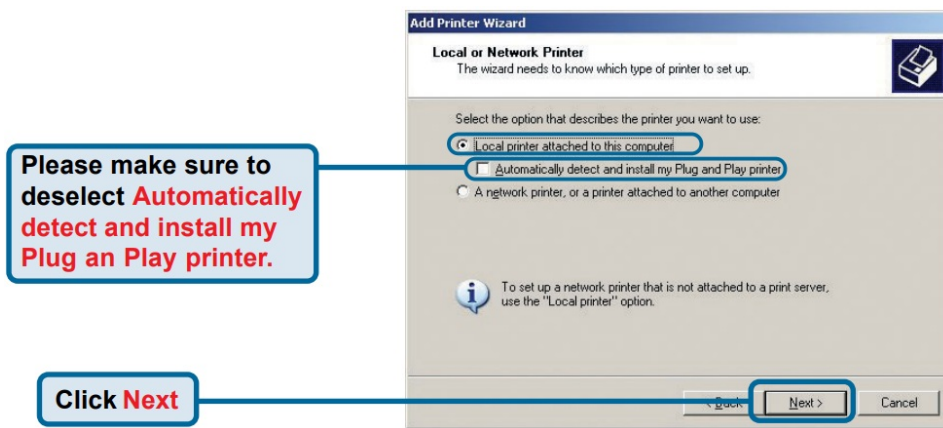
Write down on a piece of paper the Port name that you wish to use.

For Windows XP:

Go to Start>Printers and Faxes>Add a Printer or Go to Start>Control Panel> Printers and Faxes



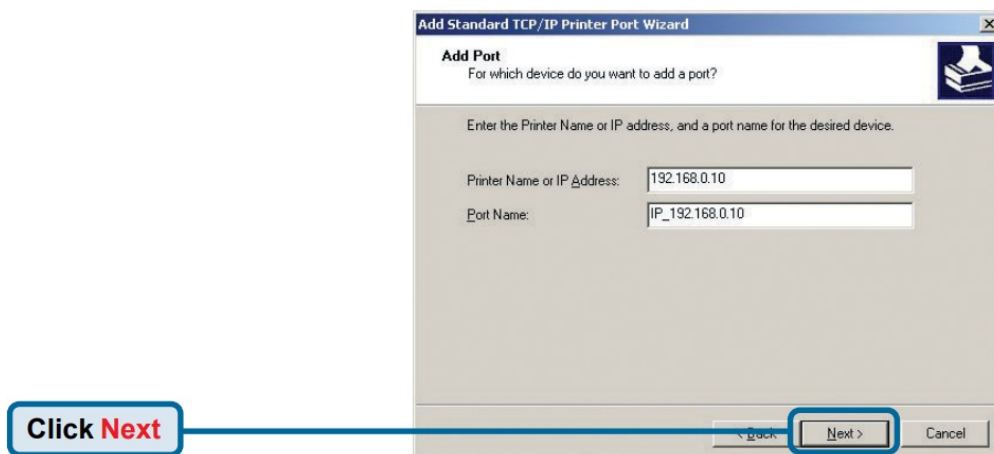
Select "Local Printer."



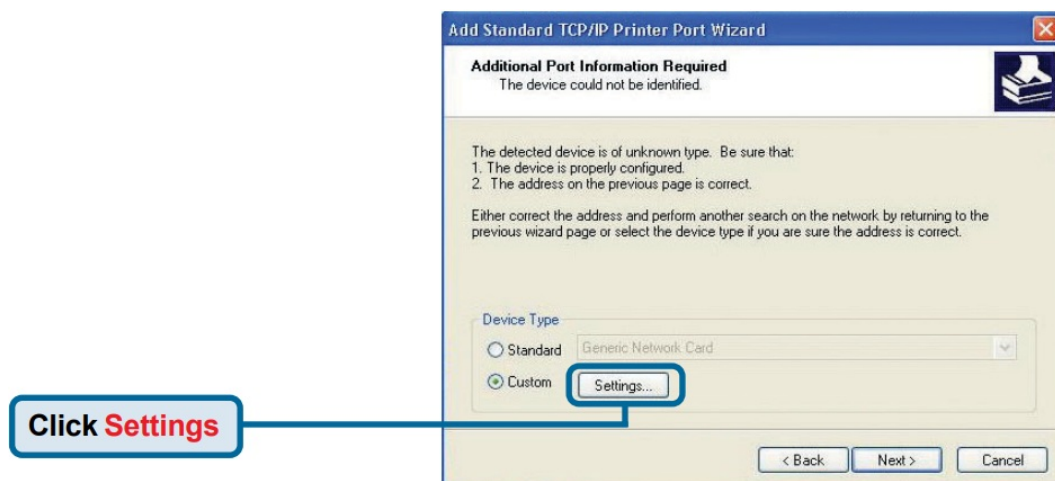
Select "Create a new port." At the pull-down menu, highlight "Standard TCP/IP Port."



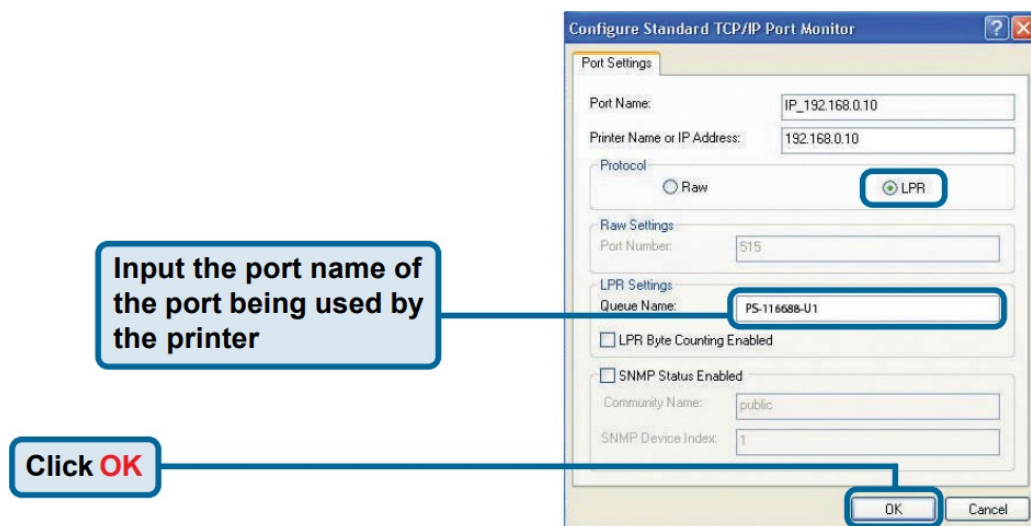
Type in the IP address of the print server. (i.e. 192.168.0.10) The port name will automatically be filled in.

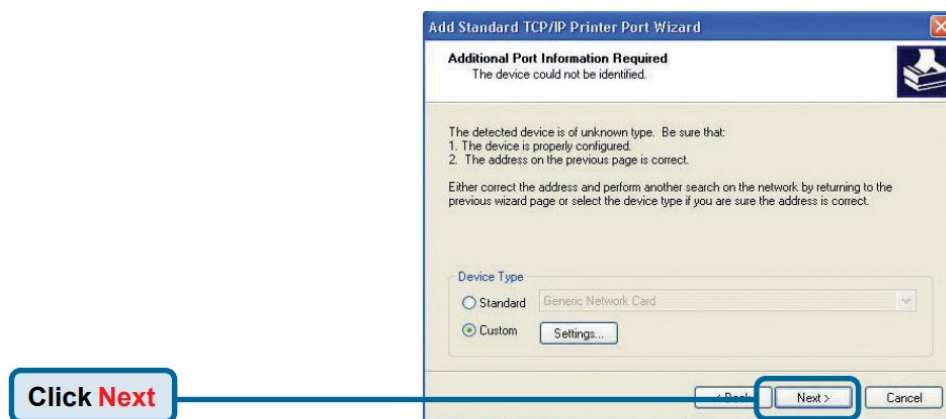


Warning: This may take a few seconds
Select “Custom” Then click on Settings.

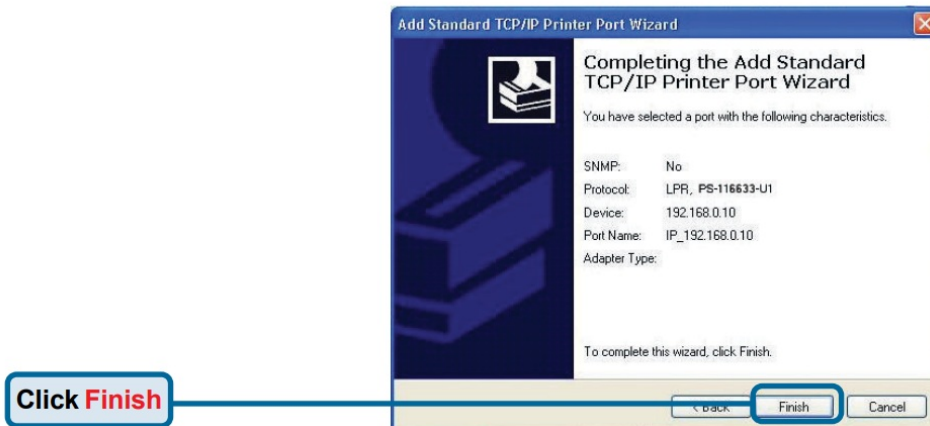


Select “LPR”



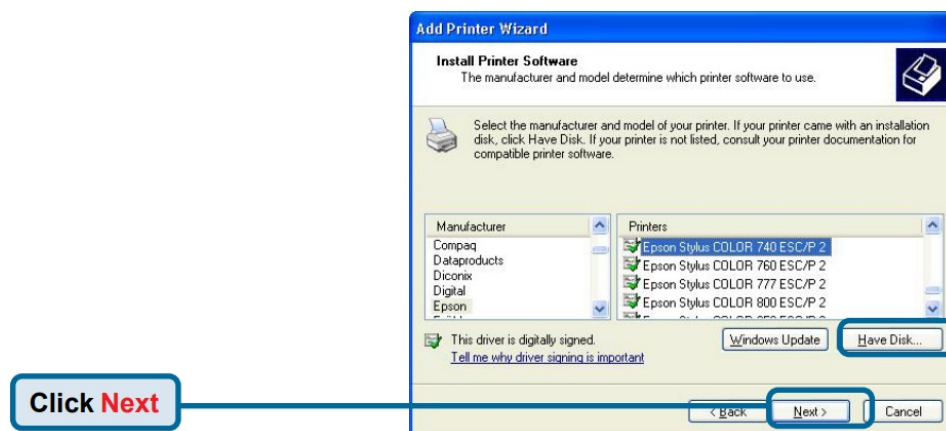


Click **Next**



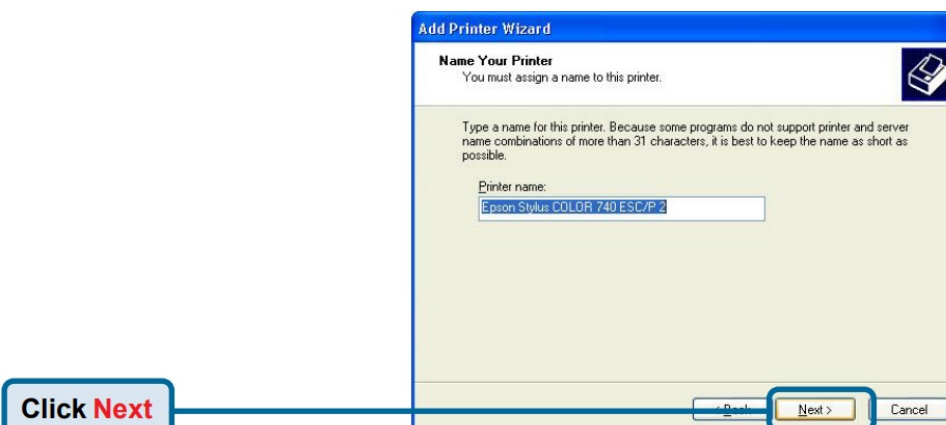
Click **Finish**

In this window, scroll down to find your printer. (If it is not listed, insert the driver CD or diskette that came with your printer.) Click on "Have Disk..." Then, scroll down and highlight the printer.



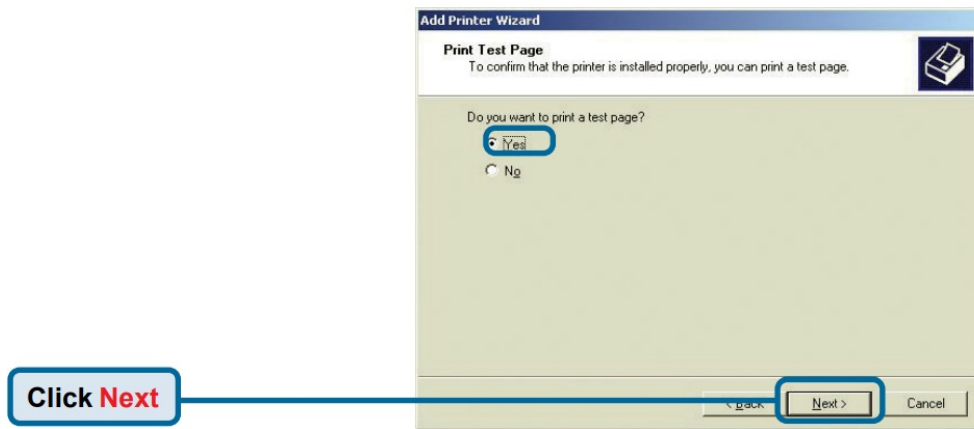
Click **Next**

At this screen, you can input a name for this printer.



Click **Next**

Select "Yes" to print a test page



Your Setup is Complete!

The printer is now ready for printing with Windows XP, on your network.



Technical Support

You can find the most recent software and user documentation on the D-Link website. D-Link provides free technical support for customers within the United States and within Canada for the duration of the warranty period on this product. U.S. and Canadian customers can contact D-Link technical support through our website or by phone.

Tech Support for customers within the United States:

- **D-Link Technical Support over the Telephone:** (877) 453-5465 24 hours a day, seven days a week
- **D-Link Technical Support over the Internet:** <http://support.dlink.com>
- **Email:** support@dlink.com

FAQ's

What is the D-Link DP-301U Fast Ethernet USB Print Server?

The D-Link DP-301U is a print server that allows you to share a USB printer over a network, making it accessible to multiple users.

What types of USB printers are compatible with this print server?

The DP-301U is compatible with most USB printers, including inkjet and laser printers. It's important to check the compatibility list provided by D-Link for specific models.

How do I set up the DP-301U Print Server on my network?

Setting up the DP-301U involves connecting it to your network and installing the necessary drivers and software on your computers. Refer to the user manual for detailed setup instructions.

Can I use the DP-301U with both Windows and Mac computers?

Yes, the DP-301U is compatible with both Windows and Mac operating systems, making it versatile for different user environments.

Does this print server support wireless printing?

No, the DP-301U is a wired print server that connects to your network via Ethernet. It does not support wireless printing directly.

What are the benefits of using a print server like the DP-301U?

Using a print server allows you to centralize printer management, share a single printer among multiple users, and reduce the need for individual printer connections to each computer.

Can I manage and monitor print jobs with the DP-301U?

Yes, the DP-301U typically offers print job management features, allowing you to monitor and manage print queues and settings.

What security features are available for the DP-301U?

The DP-301U may offer security features such as password protection and access control to ensure that only authorized users can use the printer.

Is the DP-301U compatible with older USB printers?

In most cases, the DP-301U is compatible with older USB printers. However, it's advisable to check the compatibility list to confirm.

What is the maximum distance between the DP-301U and the printer?

The maximum distance between the DP-301U and the printer depends on the length of the USB cable you use. Typically, USB cables have a maximum length of 16 feet (5 meters).

Can I use the DP-301U with multiple printers simultaneously?

No, the DP-301U is designed to share one USB printer at a time. If you need to share multiple printers, you may require additional print servers.

What is the warranty for the DP-301U Print Server?

The warranty for the DP-301U may vary, so it's essential to check the warranty terms provided by D-Link or the retailer when purchasing the product.

Is technical support available for setting up and troubleshooting the DP-301U?

Yes, D-Link typically provides technical support and resources to assist with setup and troubleshooting of their products. You can visit their website or contact their support team for assistance.

References: [D-Link DP-301U Fast Ethernet USB Print Server – Device.report](#)