



D-BOX G5 Haptic Motion System User Guide

[Home](#) » [D-BOX](#) » D-BOX G5 Haptic Motion System User Guide 



Contents




- [1 PACKAGE CONTENTS](#)
- [2 OPTIONAL COMPONENTS](#)
- [3 OVERVIEW](#)
- [4 Documents / Resources](#)
 - [4.1 References](#)
- [5 Related Posts](#)

PACKAGE CONTENTS

	1x Haptic Bridge	
	1x USB A to USB B Cable	
	1x Power Supply	
	Mounting Screws (4 per actuator)	
	1 to 4 Haptic Actuator(s)	
	1 to 5 IEC Plug-Lock Insert(s)	
	Power Cables & “Y” Splitters	
	125Oi	2x Power Cables
	225Oi	2x Power Cables + 1x “Y” Splitters
	325Oi	3x Power Cables + 1x “Y” Splitters
	425Oi	3x Power Cables + 2x “Y” Splitters

OPTIONAL COMPONENTS

(SELECTED AT ORDER)

	Endings (captive or non captive)
	Brackets ("L" or "U" shape)
	Pivot Delrin

OVERVIEW

Thank you for purchasing your G5 haptic system! Please make sure to follow each step one by one to make your system operational.

- Unboxing
- Inventory
- Voltage Selection
- Haptic Actuator Endings
- Brackets Installation
- System Connection
- D-BOX Connect Account Creation
- D-BOX Motion Core Installation
- System Configuration
- Test & Play

Complete G5 User Guide is available [G5 haptic system documentation \(d-box.com\)](https://d-box.com/g5-haptic-system-documentation)

1. UNBOXING

1. Unpack the product from the box.
2. Visually inspect the product for damage.
3. If any part appears to be broken, contact the D-BOX Support Team*.

2. INVENTORY

Ensure that you have all the components necessary to assemble your system.
Refer to the "Package Contents" section if needed.

3. VOLTAGE SELECTION

Set all haptic actuators to meet your region power voltage by using the switch selector located underneath the casing:



4. HAPTIC ACTUATOR ENDINGS NON-CAPTIVE ENDINGS

G5 haptic actuators come native with non-captive endings. Once the actuators are installed on your platform, simply drop the actuators into the provided metal cups:



CAPTIVE ENDINGS (optional)

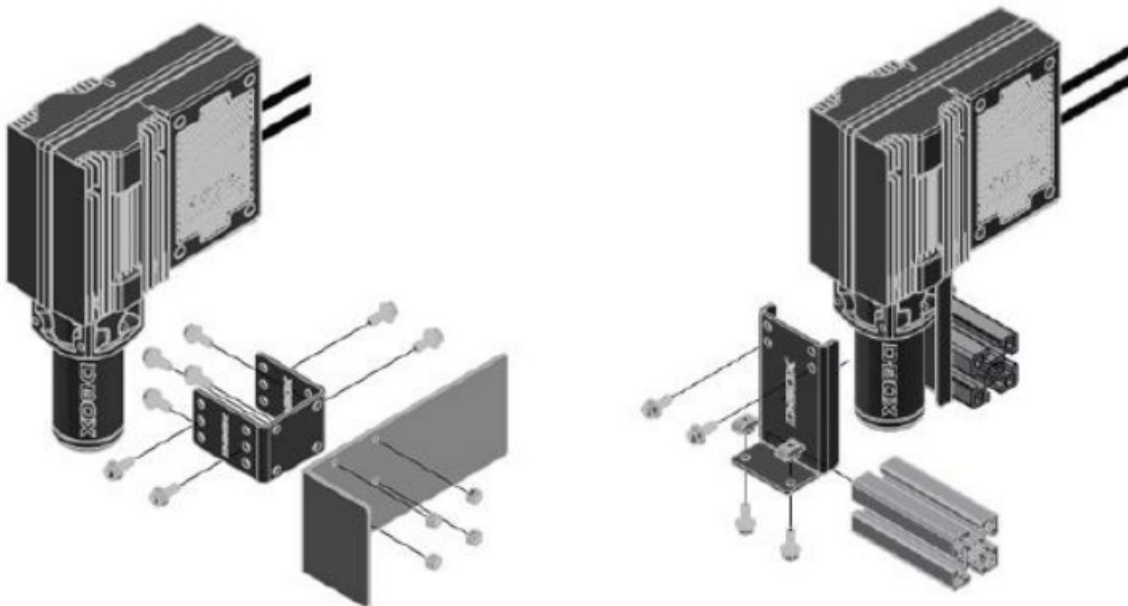
Please refer to the G5 User Guide for detailed instructions.

Never operate the haptic actuator(s) without the ending installed. This may lead to irreparable damages to the actuator:



5. BRACKETS INSTALLATION

Attach your haptic actuators to your platform using either the brackets provided by D-BOX or your reseller. “U” brackets should be mounted first on your platform:

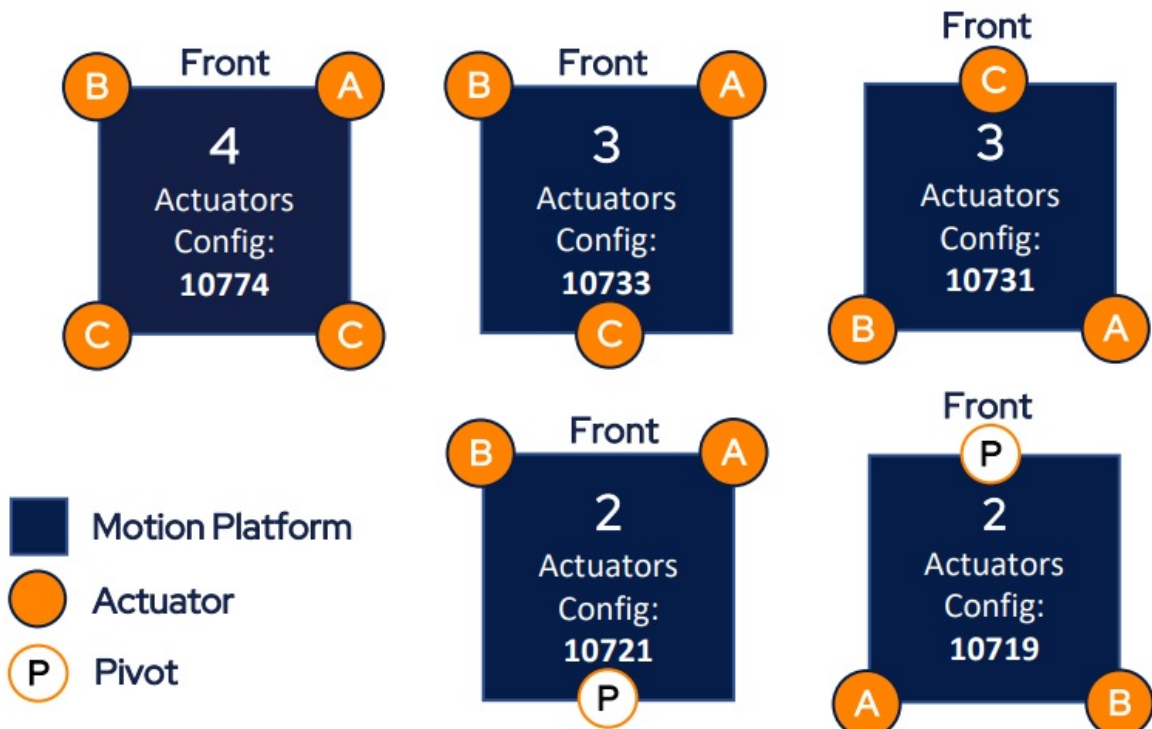
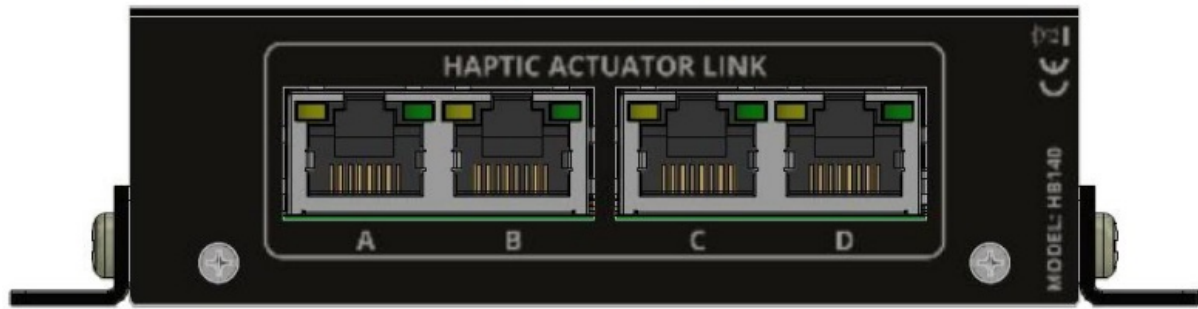


Reseller brackets could be attached in a different way depending on the model. Please refer to the reseller instructions.

6. SYSTEM CONNECTION

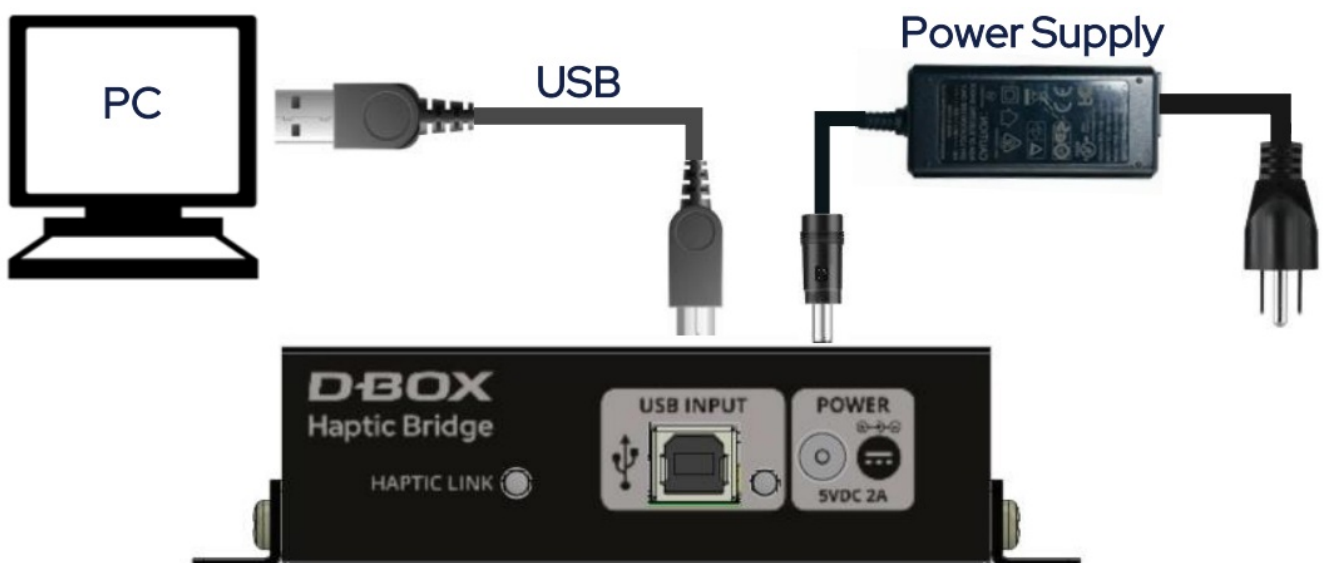
1. Connect each actuator RJ45 cable to the Haptic Bridge port lettered as per the plan below. See [G5 haptic system documentation \(d-box.com\)](https://d-box.com/g5-haptic-system-documentation) for detailed wiring diagrams.

HAPTIC BRIDGE



Configuration number to be entered in the D-BOX System Configurator at Step 9

- Connect the Haptic Bridge to your PC using the USB cable provided with your haptic system. Connect the power supply to the Haptic Bridge as well as to a power outlet:



Do not connect your Haptic Bridge to a USB hub.

- Connect all actuator power cables to a power outlet. Use the "Y" splitter(s) to simplify the connection. Install an IEC Plug-Lock insert to each IEC female connector and make sure that all power cables are firmly inserted:



7. D-BOX CONNECT ACCOUNT CREATION

Create your D-BOX account [here](#).

This is mandatory to install haptic codes for games (D-BOX Coded Gaming mode) and to have access to D-BOX Coded Video mode.

You will be prompted later to log in when opening the D-BOX Game Center or the HaptiSync app.

8. D-BOX MOTION CORE INSTALLATION

1. Download D-BOX Motion Core [here](#).
2. Extract & install Motion Core on the computer (PC) that will be connected to your haptic system.

D-BOX Motion Core includes system drivers in addition to a complete software suite including the following software and utilities:

- D-BOX Control Panel
- D-BOX Game Center
- D-BOX Adaptive Gaming Configurator
- D-BOX HaptiSync App
- D-BOX System Monitor
- D-BOX Stimuli Presenter

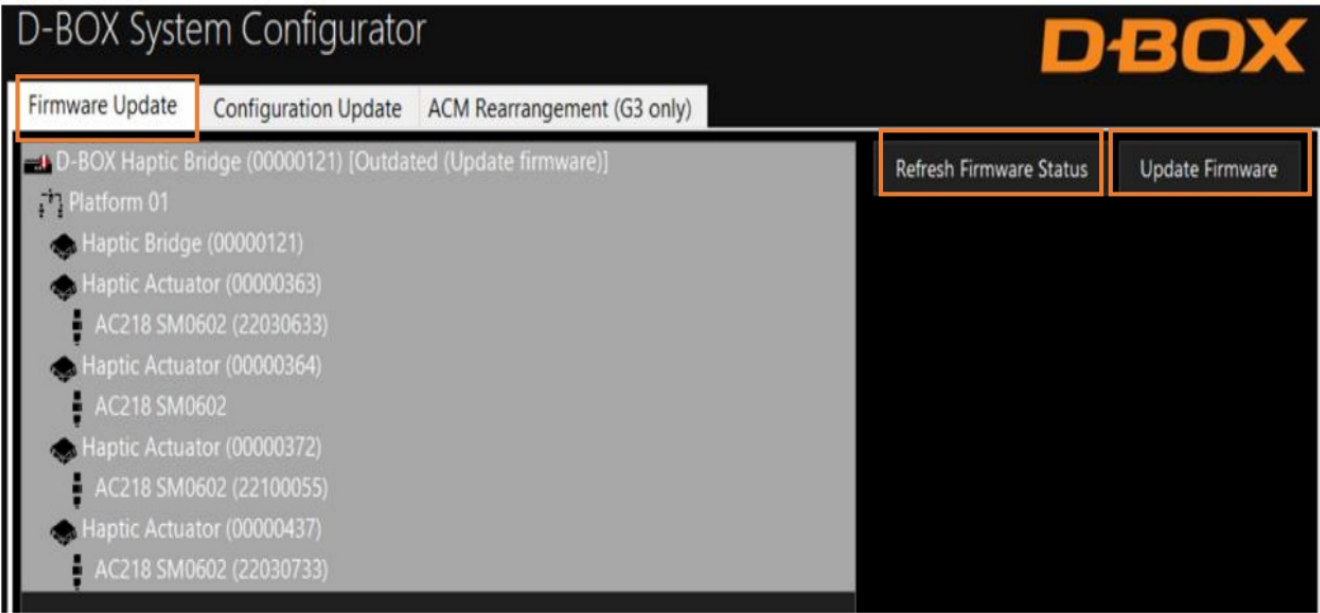
Take note that this software cannot be used until you complete your system configuration at step 9.

9. SYSTEM CONFIGURATION

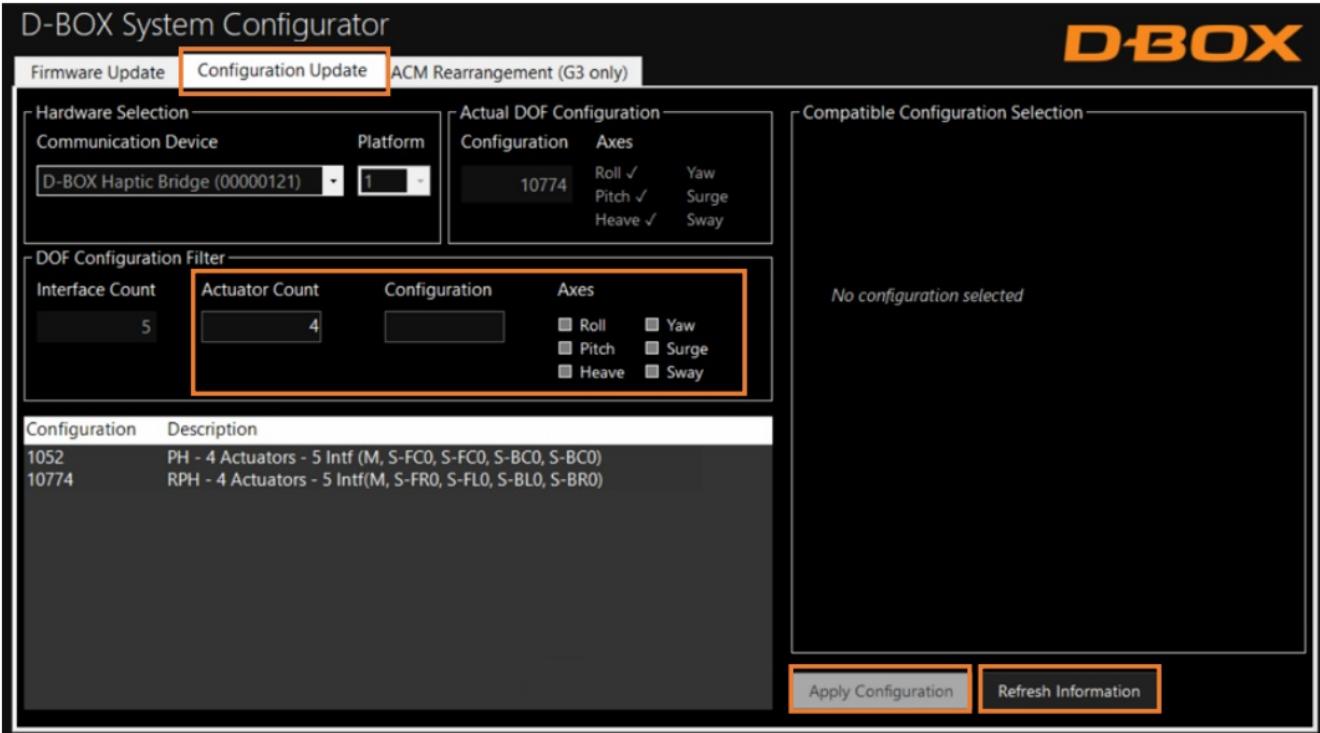
Your Haptic Bridge comes with a blank configuration. You need to configure your Haptic Bridge to match your haptic system configuration using the D-BOX System Configurator.

1. Download D-BOX System Configurator [here](#)
2. Extract the compressed file and run the installer. Take note that the User Guide is located into the Windows Start menu/D-BOX folder.
3. Firmware update:
 - a) Make sure your haptic system is powered on.

- b) Open the D-BOX System Configurator from the Windows Start menu/D-BOX folder. From the Firmware Update tab, click Refresh Firmware Status.
- c) If the system shows “Outdated (Update firmware)”, click Update Firmware and follow the on-screen instructions:




4. Configuration update:
 - a) Select the Configuration Update tab. Click Refresh Information. Make sure the Actuator Count matches with your system. If not, make sure that all power cables and RJ45 are firmly connected.
 - b) Enter the configuration number matching your system (see section 6) or select the axes you want for your system. Click Apply Configuration:

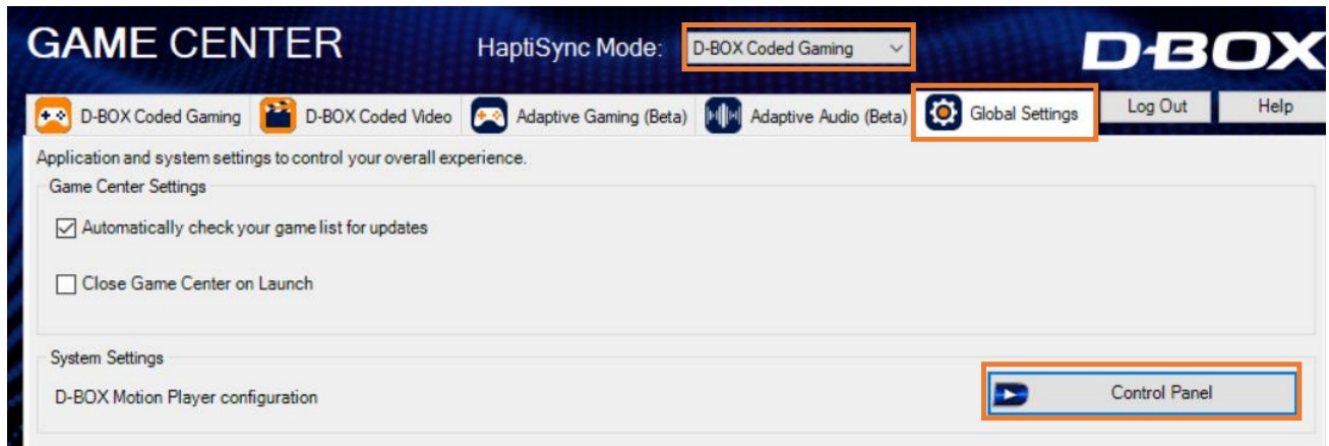


Close the System Configurator when completed.

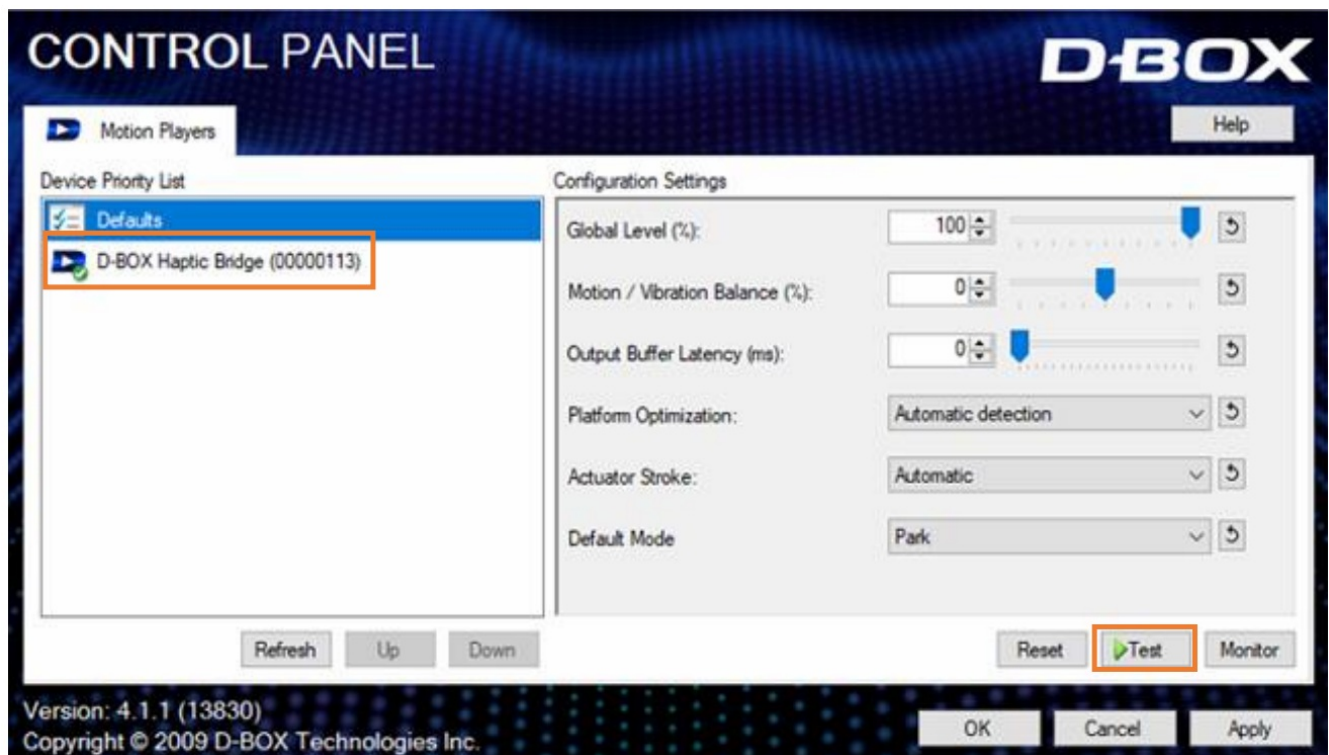
10. TEST & PLAY

1. **Testing your system:** From the Windows Start menu, open the  D-BOX Game Center application and enter your D-BOX Connect account credentials. Make sure your HaptiSync Mode is set to D-BOX Coded

Gaming. Click on the Global Settings tab then click on the Control Panel button:



From the Device Priority List, select your Haptic Bridge then click the Test button. Your haptic system should start moving and vibrate following a factory haptic pattern:



Click the Test button again to stop the test.

2. **D-BOX Game Center:** It's now the time to enjoy your new haptic system with your favorite game or movie! Make sure to select the appropriate HaptiSync Mode from the Game Center drop down menu:

- D-BOX Coded Gaming: Premium haptic experiences for D-BOX coded apps, simulators & games. Use the Adaptive Gaming mode if your title is not in the list. Click [D-BOX Coded Video Mode \(Computer & Game Center\)](#) for more details.
- D-BOX Coded Video: Premium haptic experiences for D-BOX coded movies, TV shows, using audio synchronization. Click [D-BOX Coded Video Mode \(Computer & Game Center\)](#) for more details.
- Adaptive Gaming: Haptic experiences using real-time events from game controller or keyboard. Click [D-BOX Coded Video Mode \(Computer & Game Center\)](#) for detailed instructions on how to use this feature.
- Adaptive Audio: Automated haptic experiences for any movie, music, TV show and games using audio processing. Click [D-BOX Coded Video Mode \(Computer & Game Center\)](#) for more details.

* **D-BOX** SUPPORT

Address: 2172 de la Province, Longueuil, QC Canada J4G 1R7

Email: support@d-box.com

Phone: US: 1 888 442-3269 ext.931

Other regions: +1 450 442-3003 ext.931

Monday to Friday: 8:00AM to 8:30PM (GMT-5)

Saturday & Sunday: 8:30AM to 5:00PM (GMT-5)

231-914-0004-EN7

January 2023

Documents / Resources



[D-BOX G5 Haptic Motion System](#) [pdf] User Guide
G5 Haptic Motion System, G5, Haptic Motion System, Motion System

References

- [box — Secure Cloud Content Management, Workflow, and Collaboration](#)
- [connect.d-box.com/](#)
- [D Adaptive Audio Mode \(Computer & Game Center\)](#)
- [D Adaptive Gaming Mode \(from the Game Center\)](#)
- [D D-BOX Coded Gaming Mode \(from the Game Center\)](#)
- [D D-BOX Coded Video Mode \(Computer & Game Center\)](#)
- [D G5 haptic system documentation](#)
- [D D-BOX Software Downloads | Motion Core, App and More](#)

[Manuals+](#)