



SOLUTION X i-FIX Child Car Seat



cybex SOLUTION X i-FIX Child Car Seat Instruction Manual

[Home](#) » [CYBEX](#) » **cybex SOLUTION X i-FIX Child Car Seat Instruction Manual** 

Contents

- [1 cybex SOLUTION X i-FIX Child Car Seat](#)
- [2 IMPORTANT INFORMATION](#)
- [3 PRODUCT PARTS](#)
- [4 INITIAL ASSEMBLY](#)
- [5 RECLINING HEADREST](#)
- [6 ADJUSTING THE HEADREST](#)
- [7 SECURING THE CHILD](#)
- [8 Using Instruction](#)
- [9 Contact](#)
- [10 FAQ](#)
- [11 Documents / Resources](#)
 - [11.1 References](#)



cybex SOLUTION X i-FIX Child Car Seat



CERTIFICATION

- R129/04
- CBX Solution X i-Fix
- Size range: 100 – 150 cm
- Recommended from approx. 3 years to 12 years

Thank you for deciding on the Solution X i-Fix when choosing your car seat. Carefully read this user guide before installing the car seat in your vehicle and always keep it to hand for future reference.

IMPORTANT INFORMATION

- Without the approval of the Type Approval Authority, the car seat may not be modified or added to in any way.
- In order to keep your child properly protected, it is absolutely essential that you use the car seat as described in this user guide.
- This car seat may only be installed on vehicle seats which are approved for the use of child restraint systems according to the user guide.
- Only suitable for vehicle seats with automatic three-point belts approved in accordance with UN Regulation No.16 or a comparable standard.
- Do not use any load bearing contact points other than those described in the instructions and marked on the child restraint.
- The full surface of the backrest of the car seat must make contact with the backrest of the vehicle.
- The shoulder belt must run upwards and back at a recline. It must never run forward to the upper belt point in your vehicle.
- The vehicle belt buckle must never cross the belt guide of the seat. If the belt whip is too long, the child seat is not suitable for use in this position in the vehicle. In case of doubt please contact the child restraint

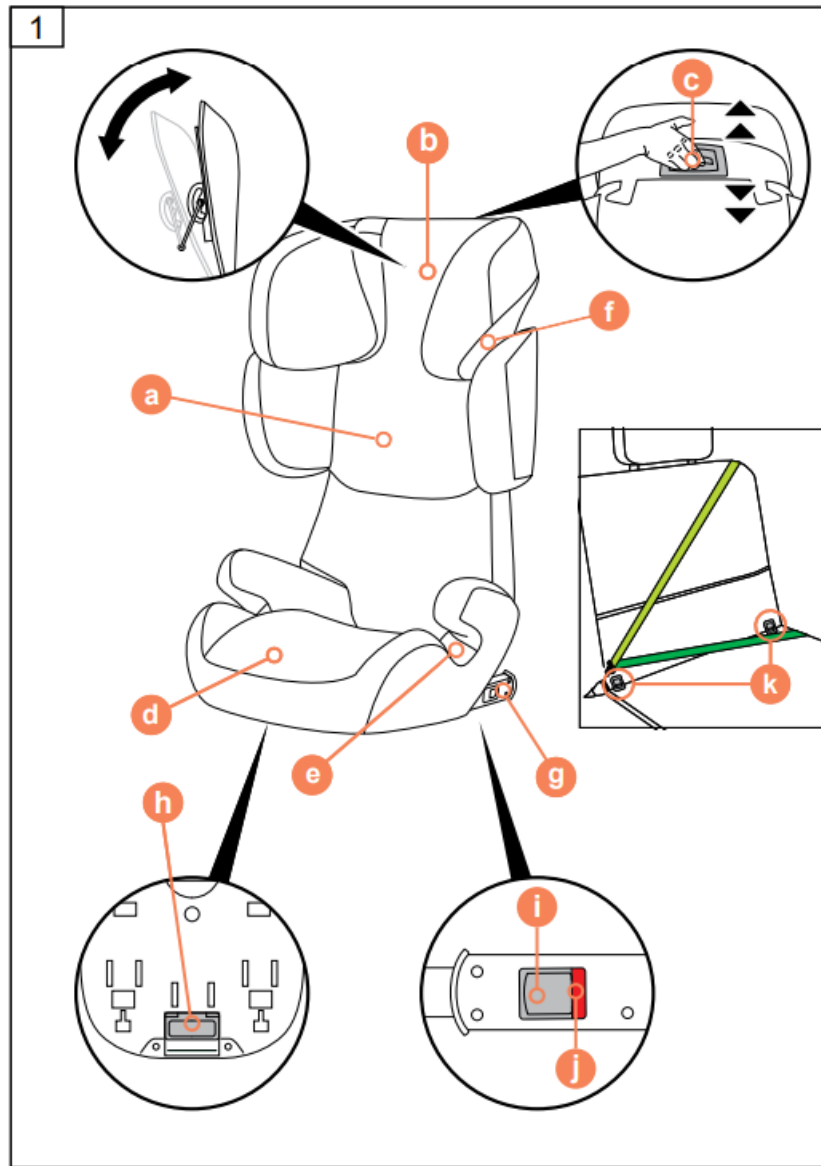
manufacturer.

- The three-point vehicle belt must only be passed through the designated routings. The belt routings are described in detail in this manual and are marked in green on the car seat.
- The lap belt must run as low as possible across your child's groin to have optimum effect in the event of an accident.
- Before each use make sure that the automatic three-point vehicle belt is correctly adjusted and fits tightly to the child's body. Never twist the belt!
- Only an optimally adjusted headrest can offer your child maximum protection and comfort while ensuring that the shoulder belt can be fitted smoothly.
- The car seat must always be secured correctly with the vehicle belt in the vehicle even when not in use.
- Always ensure that the car seat is never jammed when closing the car door or adjusting the back seat.
- Luggage or any other objects present in the vehicle must always be firmly secured. Otherwise, they may be thrown within the car, which could cause fatal injuries.
- The car seat must never be used without the seat cover. Ensure that only an original seat cover is used, as the cover is a key element of the seat's function.
- Never leave your child unattended in the car.
- The parts in the child restraint system heat up in the sun and could potentially burn your child's skin. Protect your child and the car seat from direct sun exposure.
- An accident may cause damage to the car seat that is not identifiable with the naked eye. Please replace the seat after an accident. In case of doubt, please consult your dealer or the manufacturer.
- Do not use this car seat for more than 9 years. The car seat is exposed to high stress during its product life span, which leads to changes in the quality of the material with increasing age.
- The plastic parts can be cleaned with a mild cleaning agent and warm water. Never use harsh cleaning agents or bleaches!
- On some vehicle seats made of sensitive materials, the use of car seats may leave marks and/or cause discolouration. To prevent this, you can place a blanket or towel or similar underneath the car seat to protect the vehicle seat.

PRODUCT

PRODUCT PARTS

- (a) Backrest
- (b) Reclining Headrest
- (c) Headrest Height Adjuster
- (d) Booster
- (e) Lap Belt Guide
- (f) Shoulder Belt Guide
- (g) ISOFIX Locking Arms
- (h) ISOFIX Adjustment Handle
- (i) ISOFIX Release Button
- (j) ISOFIX Safety Indicator
- (k) ISOFIX Anchorage Points



INITIAL ASSEMBLY

Connect the backrest (a) to the booster (d) by hooking the guide lug on the axis of the booster. The backrest (a) is then folded forward.

THE CORRECT POSITION IN THE VEHICLE

With retracted ISOFIX Locking arms (g) the car seat can be used on vehicle seats which are equipped with an automatic three-point belt. For using ISOFIX, please refer to the vehicle type list for approved vehicles. You can obtain the most up-to-date version from qr.cybex-online.com/solution-x-i-fix-carcompatibility. Above a child's stature of 135 cm, the compatibility between the Solution X i-Fix and your vehicle might be reduced. Please review the vehicle type list to check whether the car seat can be used in all headrest positions without restrictions. In exceptional cases, the car seat may also be used on the front passenger seat. Always comply with the recommendations of the vehicle manufacturer.

INSTALLING THE CAR SEAT IN THE VEHICLE

1. Always ensure that...

- the backrests in the vehicle are locked in their upright position.
- when installing the car seat on the front passenger seat, adjust the vehicle seat as far back as possible

without affecting the belt routing.

2. Use the ISOFIX adjustment handle (h) under the booster (d) and pull the two ISOFIX locking arms (g) to their furthest extent.
3. Now twist the ISOFIX locking arms (g) 180° so that they are facing the direction of the ISOFIX anchorage points (k).
4. Place the car seat on the appropriate seat in the vehicle.
5. Push the two ISOFIX locking arms (g) into the ISOFIX anchorage points (k) until these lock into place with an audible "CLICK".
6. Use the ISOFIX adjustment handle (h) and push the car seat against the vehicle seat.
7. Ensure that the entire surface of the backrest (a) of the car seat is placed against the backrest of the vehicle seat.
? If the headrest of the vehicle is in the way, pull it upwards to its furthest extent or remove it completely (except in rear-facing vehicle seats).
8. Ensure the seat is secure by trying to pull it out of the ISOFIX anchorage points (k). The green safety indicators (j) must be clearly visible on both sides of the seat.
9. In case the seat is used without ISOFIX, it can be stored away on the bottom of the seat.
? By using ISOFIX, a connection to the vehicle is created which increases your child's safety. Your child still needs to be secured with the three-point belt of the vehicle.

REMOVING THE CAR SEAT FROM THE VEHICLE

Perform the installation steps in the reverse order.

1. Unlock the ISOFIX locking arms (g) on both sides by pushing the ISOFIX release buttons (i) and pulling them back simultaneously.
2. Pull the seat away from the ISOFIX anchorage points (k).
3. Remove the car seat and store the ISOFIX System in reverse order to installation.

RECLINING HEADREST

The Reclining Headrest (b) helps to prevent the child's head from dangerously tipping forward during sleep. It can be set to one of 3 positions. Push the Reclining Headrest (b) forward until the desired position is reached. To return it to the original position, the reclining headrest (b) must be lifted and pulled back.

? The child's head should always be in contact with the Reclining Headrest.

ADJUSTING THE HEADREST

The headrest (b) can be adjusted by using the headrest height adjuster (c) at the back of the headrest (b). There are 11 height positions that can be set. Adjust the headrest (b) so that max. 2 cm (approx. 2 finger's width) remain between the child's shoulder and the headrest (b).

The height of the headrest can still be adjusted while the seat is installed in the vehicle.

SECURING THE CHILD

1. Route the vehicle seat belt around your child and insert the belt tongue into the belt buckle. It must lock into

place with an audible "CLICK".

2. Place the lap belt in the green coloured lap belt guides (e) of the car seat.
3. Pull the shoulder belt to tighten the lap belt.
4. On the side of the car seat next to the belt buckle, the shoulder belt and the lap belt must be inserted together in the lap belt guide (e).
5. Feed the shoulder belt through the shoulder belt guide (f) until it is inside the belt guide.
6. Ensure that the shoulder belt runs across your child's clavicle and does not touch your child's neck. If necessary, adjust the height of the headrest (b) to change the position of the belt.

REMOVING AND REATTACHING THE SEAT COVER

The cover of the car seat consists of 3 parts. These are held in position at several places by press-studs, velcro and elastic tapes. Once all have been released, the single parts of the cover can be removed. In order to put the covers back on the seat, follow the removal instructions in the reverse order.

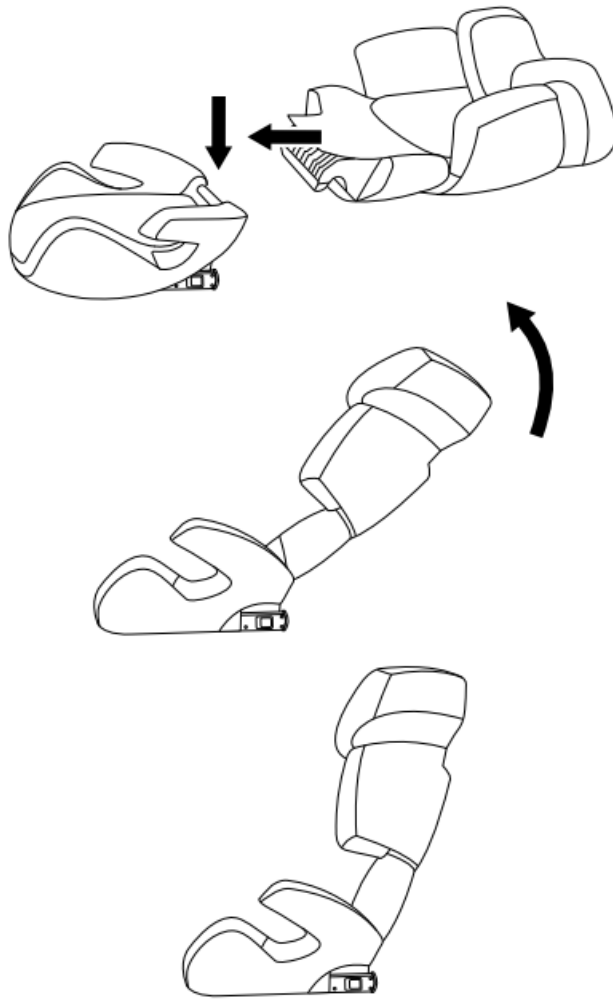
? The cover may only be washed at 30 °C with a delicate wash program otherwise it may result in discolouration of the cover fabric. Please wash the cover separately from other laundry and do not dry in the dryer or in direct sunlight!

MANUFACTURER'S WARRANTY AND DISPOSAL REGULATIONS

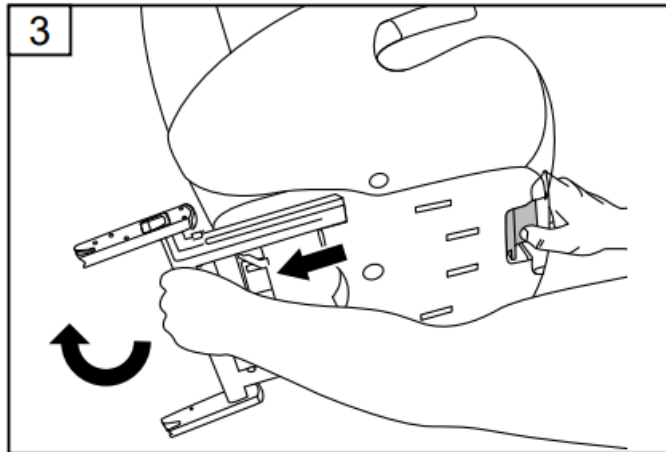
CYBEX GmbH (Riedingerstr. 18, 95448 Bayreuth, Germany) gives you 3 years warranty on this product. The warranty is valid in the country, where this product was initially sold by a retailer to a customer. The contents of the warranty and all essential information required for the assertion of the warranty can be found on our homepage, go.cybex-online.com/manufacturervarranty-car-seats. If a warranty is shown in the article description, your legal rights against us for defects remain unaffected. Please observe the waste disposal regulations in your country.

Using Instruction

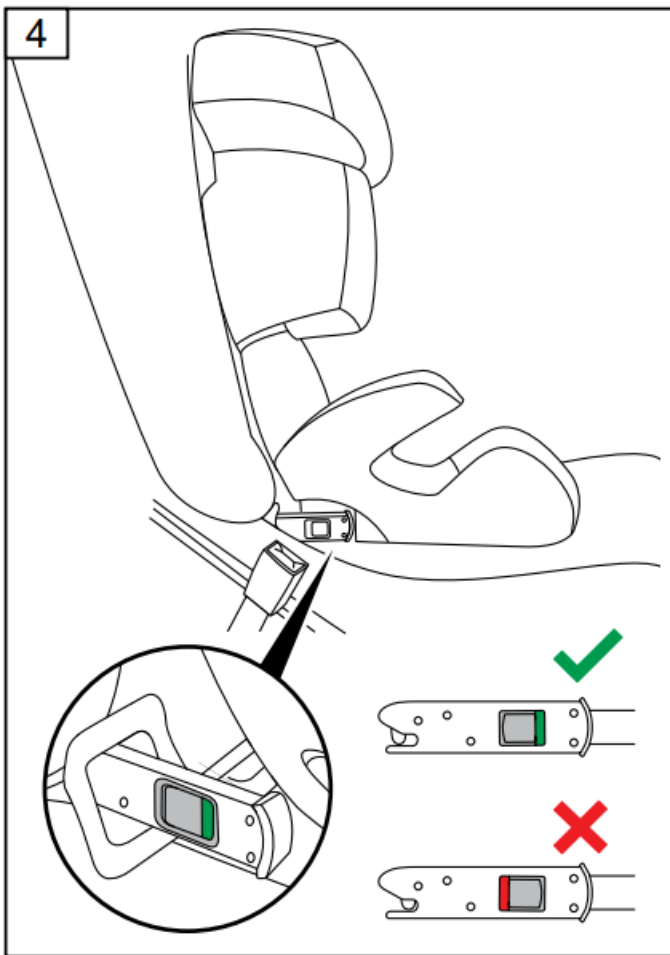
2

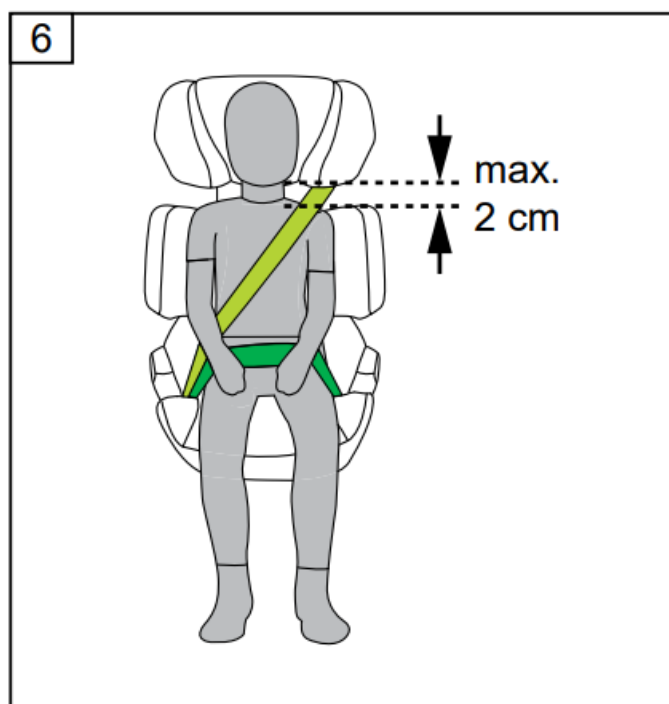
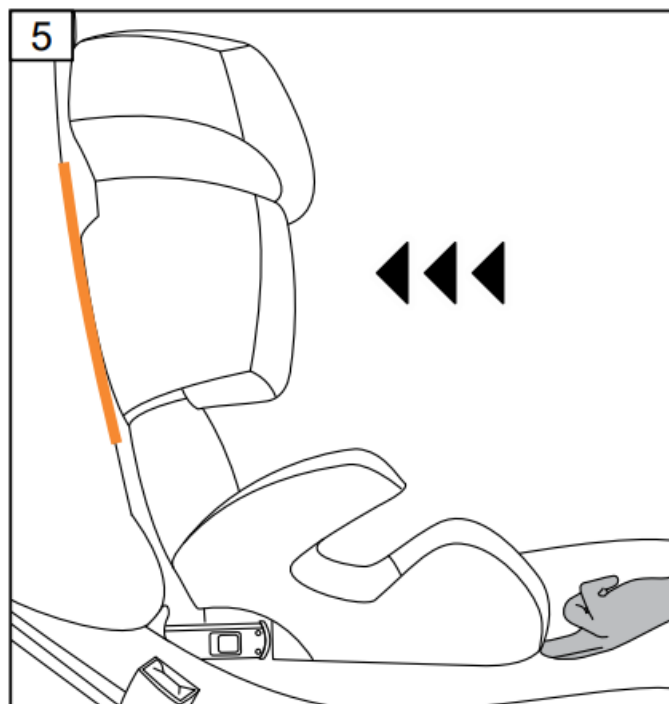


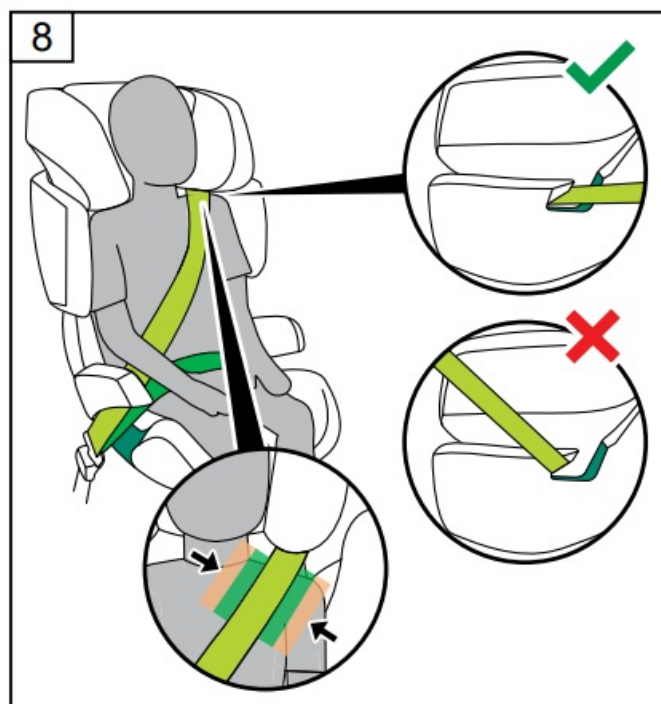
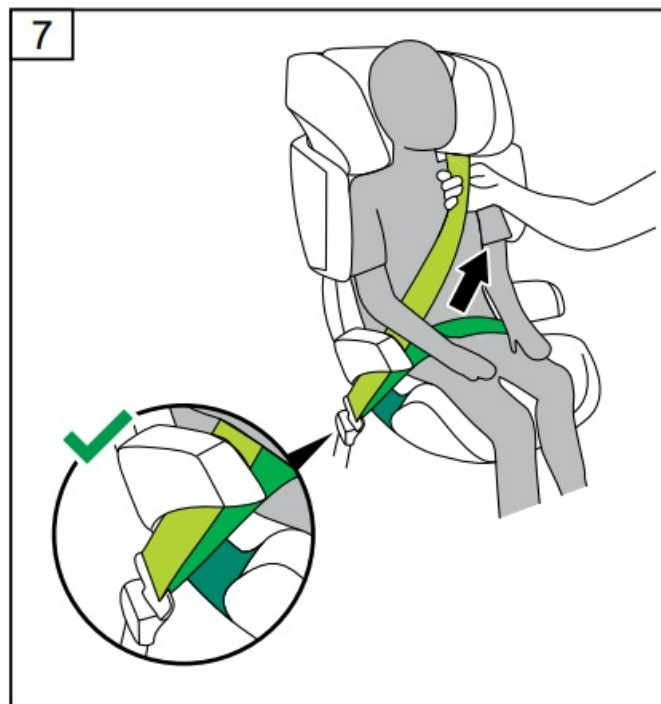
3



4







Contact

- CYBEX GmbH
- Riedingerstraße 18
- 95448 Bayreuth, Germany
- +49 (0) 921-78 511 – 0
- info@cybex-online.com


QR Code



FAQ

- **Q: Can I use the car seat without ISOFIX?**
 - A: Yes, you can use the seat without ISOFIX by securing it with the vehicle seat belt.
- **Q: What should I do if the seat cover gets damaged?**
 - A: Replace the seat cover with an original one to ensure proper function and safety.
- **Q: How do I know if the seat is suitable for my child?**
 - A: Check the age recommendations and ensure that the seat is correctly adjusted and securely fastened.

Documents / Resources

	cybex SOLUTION X i-FIX Child Car Seat [pdf] Instruction Manual SOLUTION X i-FIX Child Car Seat, SOLUTION X i-FIX, Child Car Seat, Car Seat, Seat
---	---

References

- [User Manual](#)

Manuals+ Privacy Policy

This website is an independent publication and is neither affiliated with nor endorsed by any of the trademark owners. The "Bluetooth®" word mark and logos are registered trademarks owned by Bluetooth SIG, Inc. The "Wi-Fi®" word mark and logos are registered trademarks owned by the Wi-Fi Alliance. Any use of these marks on this website does not imply any affiliation with or endorsement.