



Cybex SOLUTION B3 i-Fix Isofix Car Seat User Guide

[Home](#) » [CYBEX](#) » Cybex SOLUTION B3 i-Fix Isofix Car Seat User Guide 

Cybex SOLUTION B3 i-Fix Isofix Car Seat User Guide

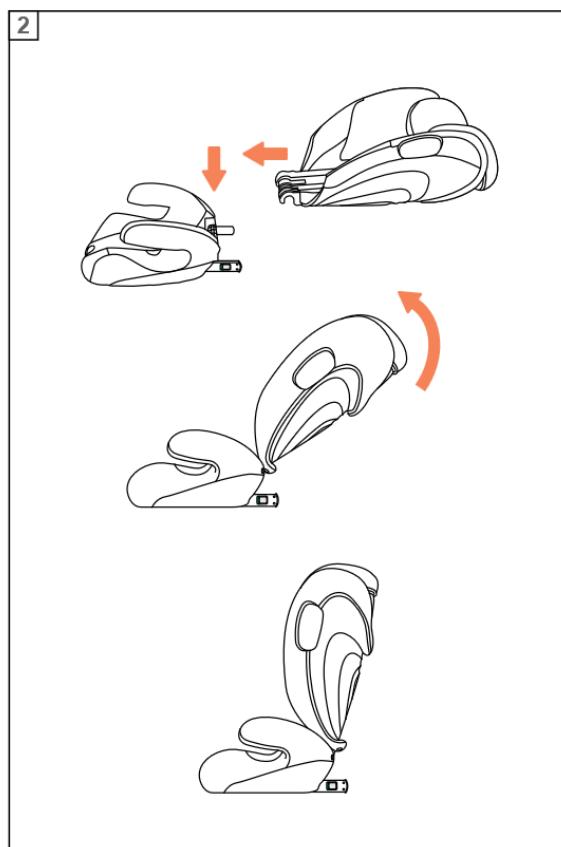
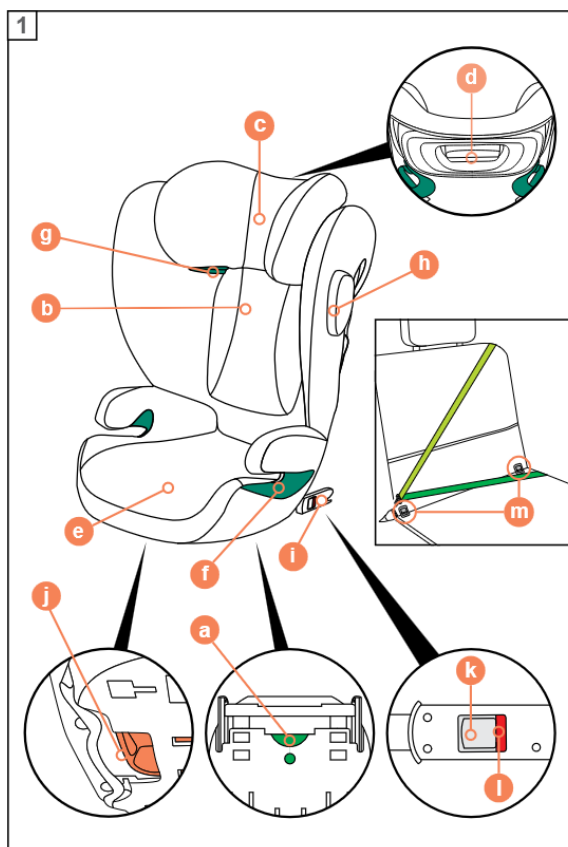
cbx | by
cybex

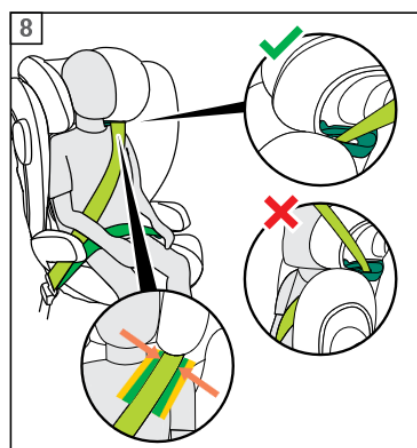
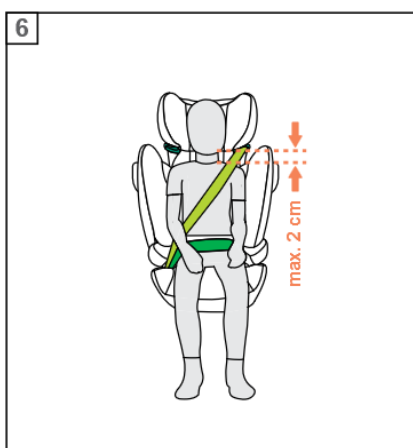
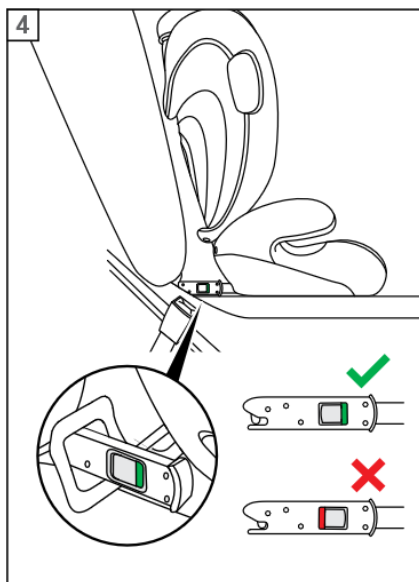
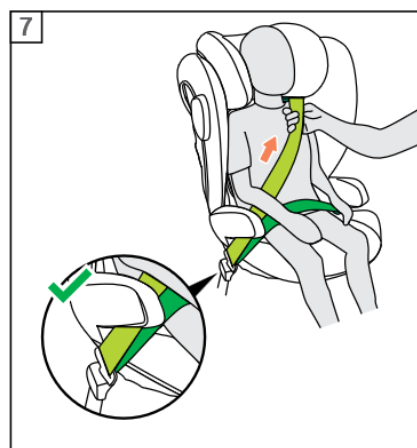
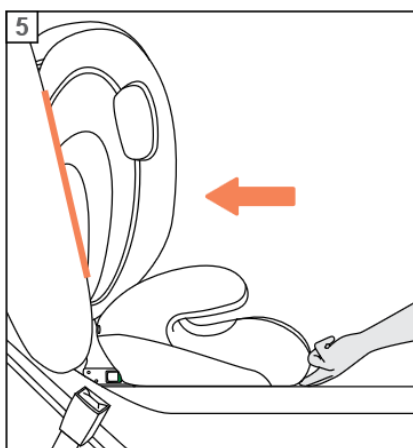
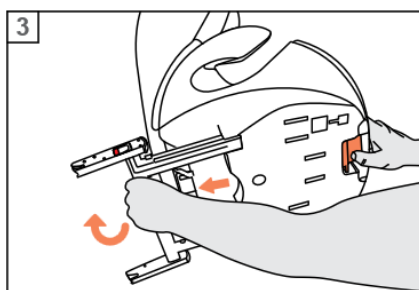


SOLUTION B3 i-FIX

UN R129/04, 100-150 cm

User guide





<https://qr.cybex-online.com/solution-b3-i-fix-instructional-video>

CERTIFICATION

R129/04

CBX Solution B3 i-Fix

Size range: 100 – 150 cm

Recommended from approx. 3 years to 12 years

Thank you for deciding on the **Solution B3 i-Fix** when choosing your car seat.

Carefully read this user guide before installing the car seat in your vehicle and always keep it to hand for future reference.

Contents

1 IMPORTANT INFORMATION AND WARNINGS

2 PRODUCT PARTS

3 INITIAL ASSEMBLY

4 THE CORRECT POSITION IN THE VEHICLE

5 INSTALLING THE CAR SEAT IN THE VEHICLE

6 REMOVING THE CAR SEAT FROM THE VEHICLE

7 ADJUSTING THE HEADREST

8 SECURING THE CHILD

9 REMOVING AND REATTACHING THE SEAT COVER

10 MANUFACTURER'S WARRANTY AND DISPOSAL REGULATIONS

11 Documents / Resources

11.1 References

IMPORTANT INFORMATION AND WARNINGS

- Without the approval of the Type Approval Authority, the car seat may not be modified or added to in any way.
- In order to keep your child properly protected, it is absolutely essential that you use the car seat as described in this user guide.
- This car seat may only be installed on vehicle seats which are approved for the use of child restraint systems according to the vehicle manual.
- Only suitable for vehicle seats with automatic three-point belts approved in accordance with UN regulation 16 or a comparable standard.
- Do not use any load bearing contact points other than those described in the instructions and marked on the child restraint.
- The full surface of the backrest of the car seat must make contact with the backrest of the vehicle.
- The shoulder belt must run upwards and back at a recline. It must never run forward to the upper belt point in your vehicle.
- The vehicle belt buckle must never cross the belt guide of the seat. If the belt whip is too long, the car seat is not suitable for use in this position in the vehicle. In case of doubt please contact the child restraint manufacturer.
- The three-point vehicle belt must only be passed through the designated routings. The belt routings are described in detail in this user guide and are marked in green on the car seat.
- The lap belt must run as low as possible across your child's groin to have optimum effect in the event of an accident.
- Before each use make sure that the automatic three-point vehicle belt is correctly adjusted and fits tightly to the child's body. Never twist the belt!
- Only an optimally adjusted headrest can offer your child maximum protection and comfort while ensuring that the shoulder belt can be fitted smoothly.
- The car seat must always be secured correctly with the vehicle belt in the vehicle even when not in use.
- Always ensure that the car seat is never jammed when closing the vehicle door or adjusting the back seat.
- The car seat is also tested and homologated without the Linear Side impact Protectors (L.S.P.).
- Luggage or any other objects present in the vehicle must always be firmly secured. Otherwise, they may be thrown within the car, which could cause fatal injuries.
- The car seat must never be used without the seat cover. Ensure that only an original seat cover is used, as the

cover is a key element of the seat's function.

- Never leave your child unattended in the vehicle.
- The parts in the child restraint system heat up in the sun and could potentially burn your child's skin. Protect your child and the car seat from direct sun exposure.
- An accident may cause damage to the car seat that is not identifiable with the naked eye. Please replace the seat after an accident. In case of doubt, please consult your dealer or the manufacturer.
- Do not use this car seat for more than 9 years. The car seat is exposed to high stress during its product life span, which leads to changes in the quality of the material with increasing age.
- The plastic parts can be cleaned with a mild cleaning agent and warm water. Never use harsh cleaning agents or bleaches!
- On some vehicle seats made of sensitive materials, the use of car seats may leave marks and/or cause discolouration. To prevent this, you can place a blanket or towel or similar underneath the car seat to protect the vehicle seat.

PRODUCT PARTS

- (a) User Guide Storage Compartment
- (b) Backrest
- (c) Adjustable Headrest
- (d) Headrest Height Adjuster
- (e) Booster
- (f) Lap Belt Guide
- (g) Shoulder Belt Guide
- (h) Linear Side-impact Protection (L.S.P.)
- (i) ISOFIX Locking Arms
- (j) ISOFIX Adjustment Handle
- (k) ISOFIX Release Button
- (l) ISOFIX Safety Indicator
- (m) ISOFIX Anchorage Points

INITIAL ASSEMBLY

Connect the backrest **(b)** to the booster **(e)** by hooking the guide lug on the axis of the booster. The backrest **(b)** is then folded forward.


THE CORRECT POSITION IN THE VEHICLE


With retracted ISOFIX locking arms (i) the car seat can be used on vehicle seats which are equipped with an automatic three point belt. For using ISOFIX please refer to the list of compatible vehicles on [qr.cybex-online.com/solution- b3-i-fix-car-compatibility](https://www.cybex-online.com/solution-b3-i-fix-car-compatibility).


Above a child's stature of 135cm, the compatibility between the Solution B3 i-Fix and your vehicle might be reduced. Please review the list of compatible vehicles to check whether the car seat can be used in all headrest positions without restrictions.

In exceptional cases, the car seat may also be used on the front passenger seat. Always comply with the recommendations of the vehicle manufacturer.

INSTALLING THE CAR SEAT IN THE VEHICLE

1. Always ensure that...
 - the backrests in the vehicle are locked in their upright position.
 - when installing the car seat on the front passenger seat, adjust the vehicle seat as far back as possible without affecting the belt routing.
 2. Use the ISOFIX adjustment handle **(j)** under the booster **(e)** and pull the two ISOFIX locking arms **(i)** to their furthest extent.
 3. Now twist the ISOFIX locking arms **(i)** 180° so that they are facing the direction of the ISOFIX anchorage points **(m)**.
 4. Place the car seat on the appropriate seat in the vehicle.
 5. Push the two locking arms **(i)** into the ISOFIX anchorage points **(m)** until these lock into place with an audible "CLICK".
 6. Use the ISOFIX adjustment handle **(j)** and push the car seat against the vehicle seat.
 7. Ensure that the entire surface of the backrest **(b)** of the car seat is placed against the backrest of the vehicle seat.
-  If the headrest of the vehicle is in the way, pull it upwards to its furthest extent or remove it completely (except in rear-facing vehicle seats).
8. Ensure the seat is secure by trying to pull it out of the ISOFIX anchorage points **(m)**. The green safety indicators **(l)** must be clearly visible on both sides of the car seat.
 9. In case the seat is used without ISOFIX, it can be stored away on the bottom of the car seat.

 By using ISOFIX, a connection to the vehicle is created which increases your child's safety. Your child still needs to be secured with the three-point belt of the vehicle.

 If the Linear Side-impact Protection (L.S.P.) is in conflict with the vehicle door or if it affects the space on the passenger seat, it is possible to detach it. Proceed the following steps: Pull off the cover of the car seat on the sides of the backrest. Press the hooks that fix the Linear Side Impact Protection (L.S.P.) to the car seat and pull the Linear Side-impact Protection (L.S.P.) out of the opening. In order to put the Linear Side-impact Protection (L.S.P.) back on the car seat, clip it onto the marked area on the side of the car seat and push until it clicks into the slot.

REMOVING THE CAR SEAT FROM THE VEHICLE

Perform the installation steps in the reverse order.

1. Unlock the ISOFIX locking arms **(i)** on both sides by pushing the release buttons **(k)** and pulling them back simultaneously.
2. Pull the car seat away from the ISOFIX anchorage points **(m)**.
3. Remove the car seat and store the ISOFIX in reverse order to installation.

ADJUSTING THE HEADREST

The headrest **(c)** can be adjusted by using the headrest height adjuster **(d)** at the back of the headrest **(c)**. Adjust the headrest **(c)** so that max. 2 cm (approx. 2 finger's width) remain between the child's shoulder and the headrest **(c)**.

 The height of the headrest can still be adjusted while the car seat is installed in the vehicle.

SECURING THE CHILD

1. Route the vehicle seat belt around your child and insert the belt tongue into the belt buckle. It must lock into place with an audible “CLICK”.
2. Place the lap belt in the green coloured lap belt guides **(f)** of the car seat.
3. Pull the shoulder belt to tighten the lap belt.
4. On the side of the car seat next to the belt buckle, the shoulder belt and the lap belt must be inserted together in the lap belt guide **(f)**.
5. Feed the shoulder belt through the shoulder belt guide **(g)** until it is inside the belt guide.
6. Ensure that the shoulder belt runs across your child's clavicle and does not touch your child's neck. If necessary, adjust the height of the headrest **(c)** to change the position of the belt.

REMOVING AND REATTACHING THE SEAT COVER

The cover of the car seat consists of 3 parts (headrest, backrest and booster). These are held in position at several places by press-studs. Once all studs have been released, the single parts of the cover can be removed. In order to put the covers back on the car seat, follow the removal instructions in the reverse order.



The cover may only be washed at 30 °C with a delicate wash program otherwise it may result in discolouration of the cover fabric. Please wash the cover separately from other laundry and do not dry in the dryer or in direct sunlight!

MANUFACTURER'S WARRANTY AND DISPOSAL REGULATIONS

CYBEX GmbH (Riedingerstr. 18, 95448 Bayreuth, Germany) gives you 3 years warranty on this product. The warranty is valid in the country, where this product was initially sold by a retailer to a customer. The contents of the warranty and all essential information required for the assertion of the warranty can be found on our homepage go.cybex-online.com/manufacture-warranty-car-seats. If a warranty is shown in the article description, your legal rights against us for defects remain unaffected.

Please observe the waste disposal regulations in your country.

REVISION INDEX

Pos.	Document code	Version	Date of issue
1	CY_172_1436_A1024	A	10.2024

CYBEX GmbH

Riedingerstraße 18
95448 Bayreuth, Germany
+49 (0) 921-78 511 – 0
info@cybex-online.com



Documents / Resources



[Cybex SOLUTION B3 i-Fix Isofix Car Seat](#) [pdf] User Guide
CY_172_1436_A1024, SOLUTION B3 i-Fix Isofix Car Seat, SOLUTION B3 i-Fix, Isofix Car Seat, Car Seat

References

- [User Manual](#)

Manuals+. [Privacy Policy](#)

This website is an independent publication and is neither affiliated with nor endorsed by any of the trademark owners. The "Bluetooth®" word mark and logos are registered trademarks owned by Bluetooth SIG, Inc. The "Wi-Fi®" word mark and logos are registered trademarks owned by the Wi-Fi Alliance. Any use of these marks on this website does not imply any affiliation with or endorsement.