



cybex Sensor Safe Infant Safety Kit User Guide

[Home](#) » [CYBEX](#) » cybex Sensor Safe Infant Safety Kit User Guide 

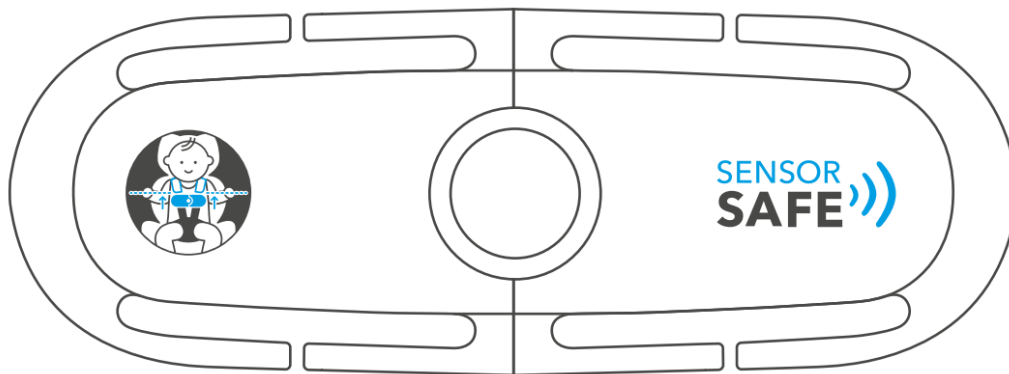


Sensor Safe Infant Safety Kit User Guide

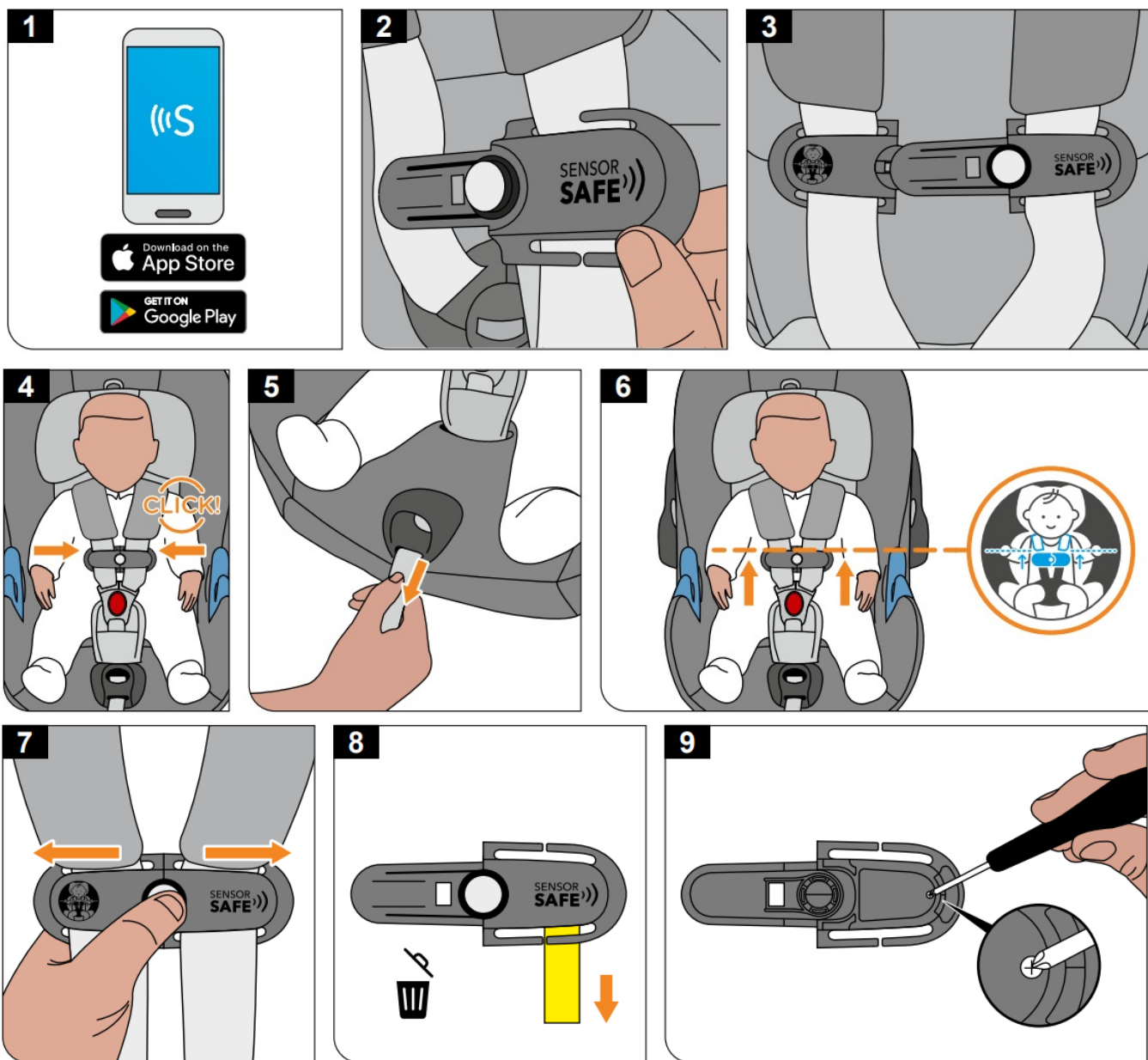
Contents

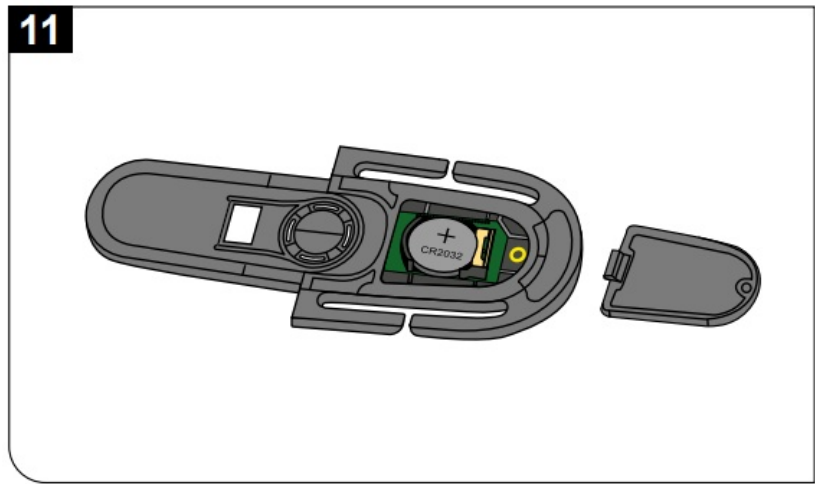
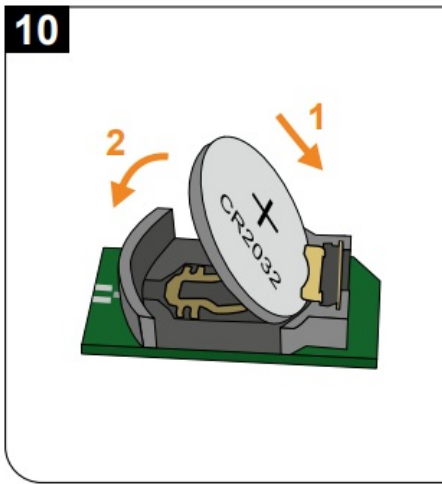
- 1 Sensor Safe Infant Safety Kit
- 2 IMPORTANT INFORMATION
- 3 INSTALLATION AND DE-INSTALLATION
- 4 RESTRAINING THE CHILD WITH A HARNESS AND CLIP
- 5 SENSORSAFE APP
- 6 FUNCTIONAL PRINCIPLE
- 7 REPLACING THE BATTERY
- 8 PRODUCT INFORMATION
- 9 DISPOSAL
- 10 Documents / Resources
 - 10.1 References
- 11 Related Posts

Sensor Safe Infant Safety Kit



CLOUD Z LINE





Approved for:

Cybox Cloud Z Line
Cybox Aton M i-Size
Cybox Aton B Line

Dear customer, thank you for purchasing a SENSOR SAFE clip. This product is manufactured under special quality surveillance and complies with the strictest safety requirements.

IMPORTANT INFORMATION

- The following short instruction is intended to provide only an overview. To achieve maximum security and comfort for your child it is imperative that you read the entire user guide of the car seat carefully.
- SENSOR SAFE cannot be used with seats other than the ones listed. The application of other products can lead to serious danger for your child.
- It is essential to use and install SENSOR SAFE per the instructions provided in this manual. In particular pay attention to the correct positioning of the clip!
- SENSOR SAFE is a monitoring system attached to the car seat and connected to your smartphone via Bluetooth (Bluetooth class 2). It will alert you of unsafe situations for the child. The system consists of the following two components:
 1. Smart Chest Clip: e.g. measurement of ambient temperature, state of an open or closed clip.
 2. Smartphone: SENSOR SAFE only works with the SENSOR SAFE application, which is available in the Apple App Store or Google Play Store (1).
- Even when used properly and in accordance with its intended purpose SENSOR SAFE serves only as a supplementary safety support system. The functionality depends on several factors and cannot be guaranteed. The ultimate responsibility for the safety of a child resides with the child's parents or caregivers. SENSOR SAFE does not represent any event to circumvent, mitigate nor represent a substitution for parental legal duties.
- **WARNING!** The full function of SENSOR SAFE is based on communication to the smartphone. Please take it with you every time and activate all functions of the smartphone needed for SENSOR SAFE.
- **WARNING!** Never leave your child unattended in the car.
- Keep plastic packaging material out of your child's reach: danger of suffocation!
- Used electronic devices do not belong in household garbage.



Please always have the instruction manual at hand close to the car seat.

INSTALLATION AND DE-INSTALLATION

The SENSOR SAFE clip needs to be attached to the harness system of the seat. Both parts of the clip have slots for connecting it to the harness system.

For the installation of both parts please proceed as follows:

- Grasp the harness under the shoulder pads and guide it from back to front through the upper slot of the clip (2).
- Guide the harness behind the clip and insert it from back to front in the lower slot.



Make sure the harness straightly runs through both slots and is not twisted (3). To uninstall the clip, push the harness together and guide it out of the slots.

RESTRAINING THE CHILD WITH A HARNESS AND CLIP

Adjust the seat according to the instructions in the user guide of the seat. Restrain your child as described in the user guide of the seat (see chapter: “STRAPPING WITH HARNESS SYSTEM”). After closing the belt buckle please proceed with the following additional steps:

- Close the clip with an audible CLICK (4).
- Push the closed clip down first – towards the buckle.
- Pull cautiously on central adjustment belt in order to tighten shoulder belts until they fit your child’s body (5).
- Position the clip directly beneath the shoulder pads (6).



Please make sure the harness system is tightened and not twisted. To open the clip please press the button in the middle and pull both parts apart (7).

SENSORSAFE APP

Download and setup

The SENSOR SAFE App can be downloaded in the Apple App Store or Google Play Store for free. To use the SENSOR SAFE clip connected to the SENSOR SAFE App please ensure that:

- the app is installed on your smartphone.
- Bluetooth is turned on.
- the clip is buckled and your smartphone is connected to it.
- the SENSOR SAFE App is given permission to send notifications and the volume is turned on (Do Not Disturb is disabled).

Before first use

Before using SENSOR SAFE for the first time, the clip must be registered to your smartphone account. In the future, the system will awake automatically, when the clip is closed and Bluetooth is activated on your smartphone as long as the app is running in the background and not closed on your phone.

For connecting, proceed as follows:

1. Pull the battery pull a tag from the SENSOR SAFE chest clip and discard it (8).
2. Activate Bluetooth on your smartphone, open the SENSOR SAFE application and follow the instructions for registration. Close the clip. An LED will light up when the clip starts to send information and will turn blue when successfully connected to the application. Now you can see the SensorSafe clip in the list of devices on the SensorSafe mobile app.
3. Test out the SensorSafe system alerts prior to using it with a child to familiarize yourself with how the safety notifications are triggered.

Registering several clips with one smartphone

You can register multiple clips to one smartphone and account and be connected to them simultaneously. To do so, connect your smartphone with each clip one after another by clicking “add new device” and following the instructions. Leave all other clips in the area unbuckled when registering a new clip for the first time.

Registering several smartphones with one clip

One clip can be registered with more than one smartphone but only one smartphone can actively be connected at a time. Please perform the registration steps for one smartphone at a time. To switch between connected users, the connected user must select “Disconnect” in Settings to allow someone else to connect.

FUNCTIONAL PRINCIPLE

After the SENSOR SAFE clip has been installed on the seat and connected to the App, it will communicate with your smartphone when it is closed. The LED on the clip will light up blue when it successfully connects to the SensorSafe mobile app on your smartphone. A red light indicates that the clip is not connected to the App. The following information will be sent to the application by the closed clip when connected via Bluetooth:

- status of the clip (open or closed)
- ambient temperature around the clip
- battery status

Furthermore, SENSOR SAFE will send alarms of possible unsafe situations. You will be notified when:

- ambient temperature around the clip approaches a critical level (too high or too low).
- the clip has been buckled for more than two hours.
- the clip has become unbuckled.
- you leave a certain range around your car and the clip is still closed.

If you stay outside of the range for too long and the clip is still closed, family emergency contacts, that you designated in the App, will be notified. To ensure these crucial safety notifications are received, please designate at least 2 family emergency contacts. You can find detailed information about the SENSOR SAFE App on www.cybexonline.com.

The SENSOR SAFE clip is designed to go into sleep mode after 12 hours to conserve battery life. To wake it up, open the clip and buckle it again.



The SENSOR SAFE clip should be stored in the unbuckled position while it is not in use to conserve battery life.

REPLACING THE BATTERY

The SENSOR SAFE app shows the battery status of the clip. Also, the LED on the clip will flash rapidly after closing when the battery is running low and the LEDs will not flash at all if the battery is dead. Please replace the battery in time to be able to connect to SENSOR SAFE.

To replace the battery please open the compartment located at the rear of the clip with a Philips head screwdriver (9). Remove the circuit board and old battery. Insert a new CR2032 battery (10) and re-insert the circuit board into the chest clip with the battery facing up (11). After changing the battery, you should be able to connect to the clip in the SENSOR SAFE application.

Please consider the following when replacing the battery:

- Keep all batteries out of reach of children.
- Only use the recommended type CR2032 batteries (Panasonic or Energizer).
- An empty battery always must be removed in order to protect the product from escaping liquids.
- Never expose this product or the battery to fire.
- Do not use old batteries or batteries that show signs of leakage or cracks.
- Only use high-quality new batteries.
- Pay attention to the correct polarity (+/-).

PRODUCT INFORMATION

If you have any questions, contact your retailer first. You should have the following details ready:

- Serial number of the seat (see a sticker on the bottom of the car seat) and type of the clip (embossing on the tongue of the clip)
- Weight, age, and height of the child Further information about our products can be found at www.cybexonline.com

DISPOSAL

To protect the environment, we ask the user to separate and dispose of the waste arising at the start (packaging) and the end (product parts) of the SENSORSafe clip's lifespan. Waste removal is arranged differently depending on the local authorities. To ensure that the clip is disposed of in accordance with regulations, contact your area's waste removal agency or local authority. Always observe your country's waste disposal regulations.

If you do not want to use the clip any longer, return it free of charge to a recycling depot for used electric appliances.

EU DECLARATION OF CONFORMITY

The object of the declaration: Cybex SensorSafe (Model: clip SOSR3)

The object of the declaration described above is in conformity with the relevant Community harmonization legislation:

- 2014/35/EU: Low Voltage Directive (LVD)
- 2014/30/EU: Electromagnetic Compatibility (EMC)
- 2014/53/EU: Radio Equipment Directive (RED)
- 2011/65/EU: Restriction of the use of certain hazardous substances in electrical and electronic equipment (RoHS)
- 2012/19/EU: Waste Electrical and Electronic Equipment (WEEE)
- SI 2017/1206 (UK): Radio Equipment Regulations



Bluetooth:

SensorSafe (Clip: SOSR3) Bluetooth 2.402-2.48 GHz, 1mW

<https://fccid.io/2ABS2-SOSR3>

<https://cybex-online.com/en-en/sensorsafe>



CYBEX GmbH

Riedingerstr. 18

95448 Bayreuth

Germany


INFO@CYBEX-ONLINE.COM

WWW.CYBEX-ONLINE.COM

WWW.FACEBOOK.COM/CYBEX.ONLINE

CY_171_8163_A0621

Documents / Resources

	<p>cybex Sensor Safe Infant Safety Kit [pdf] User Guide Sensor Safe Infant Safety Kit, Sensor Safe, Infant Safety Kit, Safety Kit</p>
---	---

References

- [Sensorsafe—Smart technology for child safety in the car](#)
- [CYBEX Online Shop | Child Car Seats, Strollers, Baby Carriers and Furniture from CYBEX](#)
- [Sensorsafe—Smart technology for child safety in the car](#)