

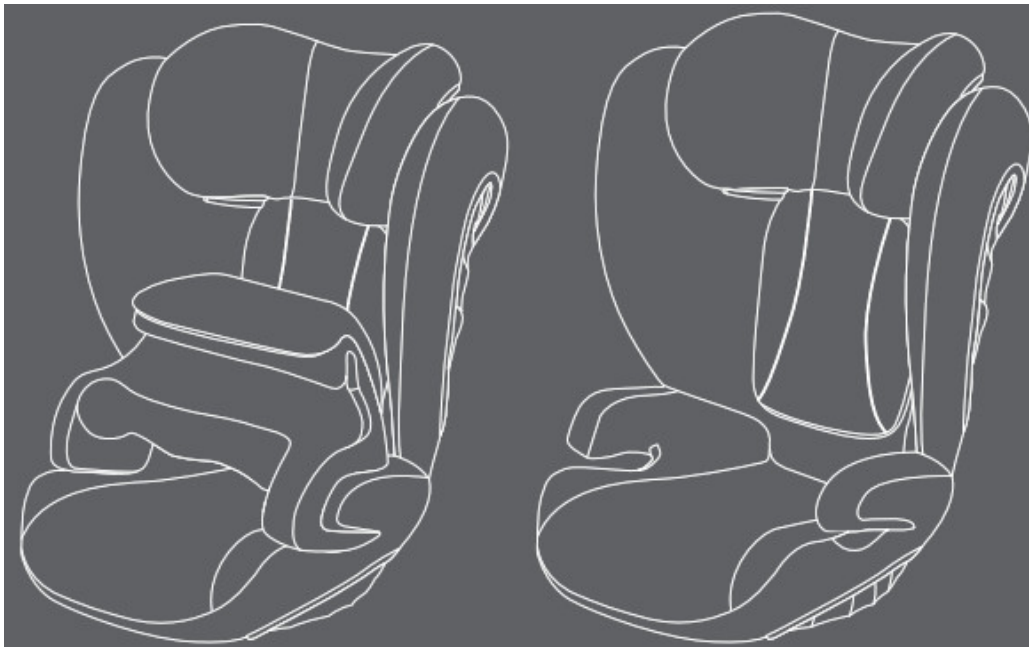


## cybex Pallas B-Fix User Guide

[Home](#) » [CYBEX](#) » cybex Pallas B-Fix User Guide 



**PALLAS B-FIX**  
**UN R44/04, Gr. 1-2-3 | 9-36 kg**  
**User guide**

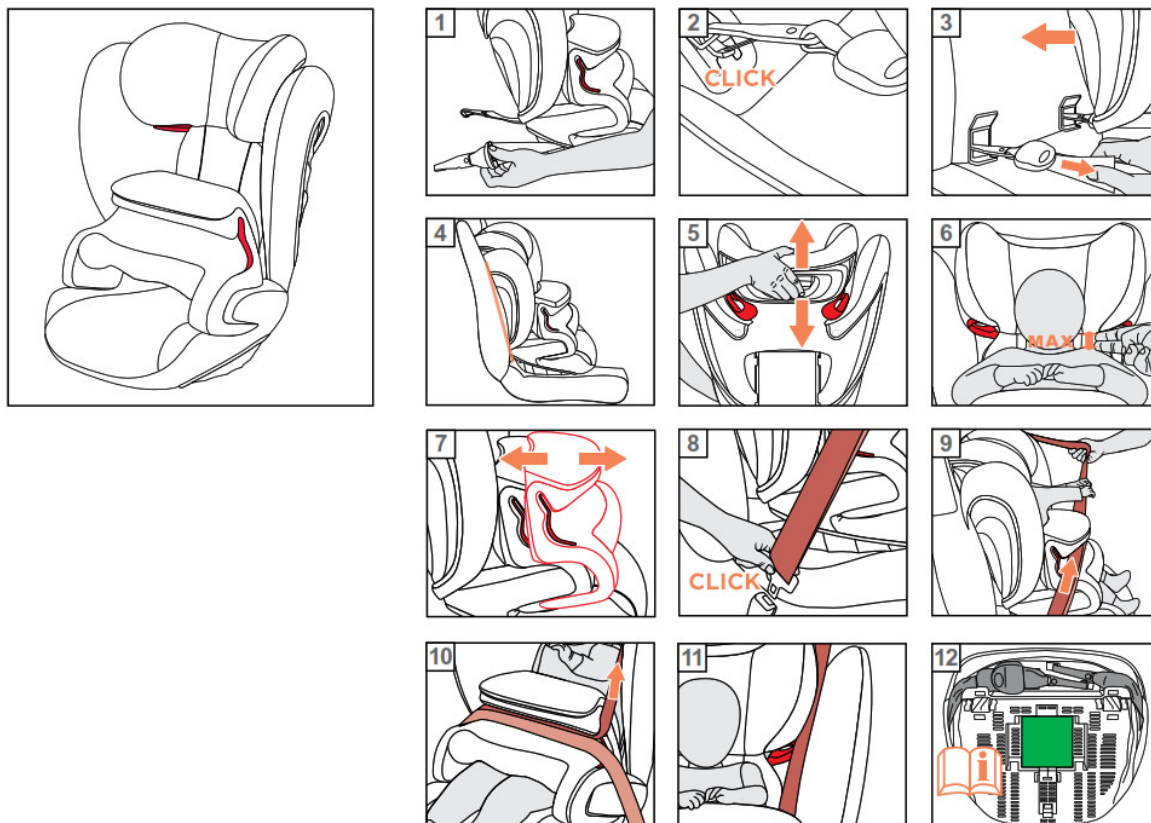


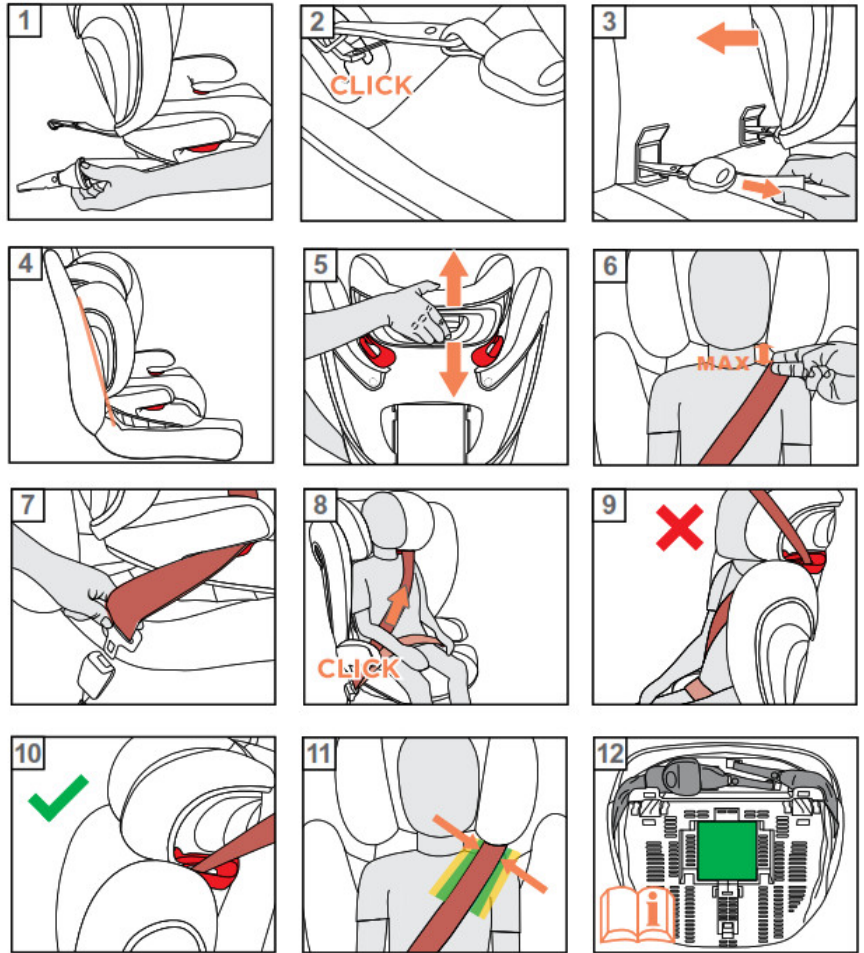
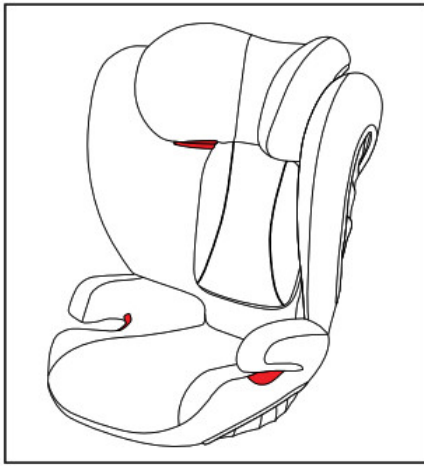
## Contents

- 1 Pallas B-Fix
- 2 CERTIFICATION
- 3 FIRST INSTALLATION
- 4 POSITIONING THE SEAT CORRECTLY IN THE VEHICLE
- 5 SAFETY IN THE VEHICLE
- 6 PLACING THE SEAT IN THE VEHICLE
- 7 SECURING THE CHILD SEAT USING THE LATCHCONNECT SYSTEM
- 8 REMOVAL OF THE CHILD SEAT
- 9 ADAPTING TO BODY SIZE
- 10 REMOVING THE SEAT COVER
- 11 CLEANING
- 12 CARE & MAINTENANCE
- 13 HOW TO ACT FOLLOWING AN ACCIDENT
- 14 PRODUCT LIFESPAN
- 15 DISPOSAL
- 16 WARRANTY CONDITIONS
- 17 Documents / Resources
  - 17.1 References
- 18 Related Posts

## Pallas B-Fix

**WARNING!** Without the approval of the Type Approval Authority, the child seat may not be modified or added to in any way. Repairs may only be performed by person authorised to this effect. Only original parts and accessories may be used for repairs. Failure to comply with the above will result in the protective function of the child seat no longer being guaranteed. Warning! The child seat only offers optimum protection for your child if you follow the usage instructions precisely.





Brief instructions Group 2/3 (15-36 kg)



## CERTIFICATION

UN R-44/04

CYBEX Pallas B-fix – group 1, 9 to 18 kg

CYBEX Solution B-fix – group 2/3, 15 to 36 kg

Seat elevator with backrest and headrest, with impact shield in group 1.

Recommended for:

Age: from approx. 9 months to 12 years Weight: 9-36 kg

Only suitable for vehicle seats with automatic three-point belts approved in accordance with UN regulation 16 or a comparable standard.

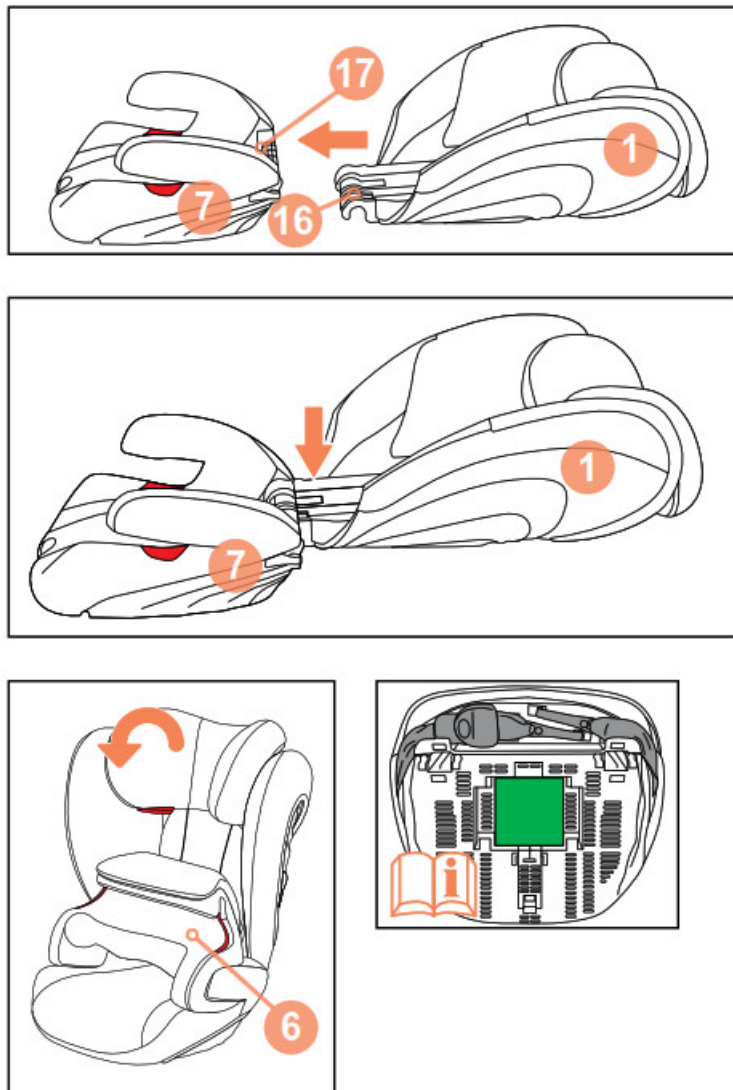
### DEAR CUSTOMER

Thank you for buying the Pallas B-fix. We can assure you that safety, comfort and ease of use were our highest priorities when developing the child seat. This product is manufactured under exceptional quality control and meets the strictest safety requirements.

**i WARNING!** In order to keep your child properly protected it is absolutely essential that you use the child seat as described in this manual.

**NOTE!** Due to country-specific requirements (e.g. colour labelling on the child seat), the product features may vary in their external appearance. This, however, does not affect the correct functioning of the product.

**NOTE!** Always keep this Instruction Manual at hand in the compartment that has been provided for that purpose on the child seat.



## FIRST INSTALLATION

The child seat consists of a booster seat (7), a backrest (1) and an impact shield (6). Only the combination of these three parts provides best protection and comfort to your child.

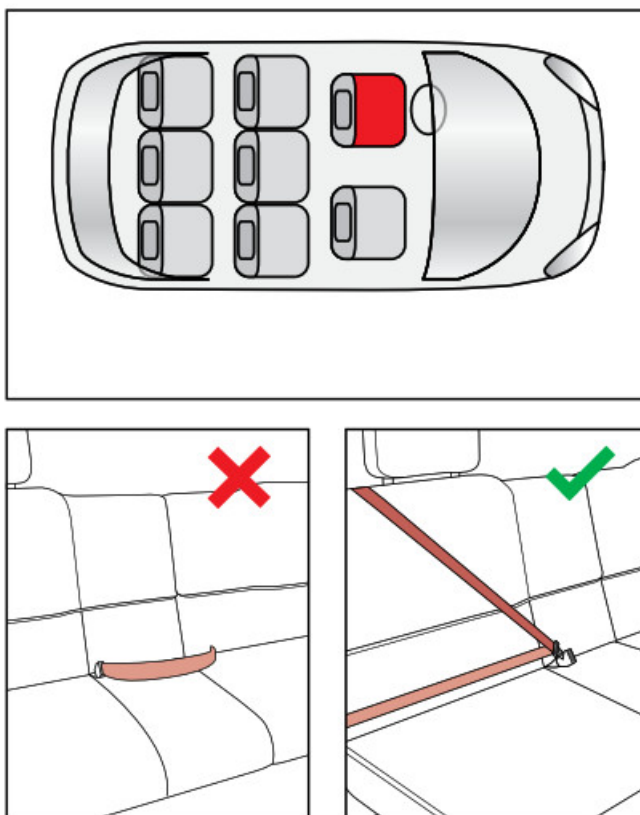
**i WARNING!** The parts of the CYBEX Pallas B-fix must not be used alone or in combination with boosters, backrests, impact shield or headrests from other manufacturers or from different product series. In such instances, the certification expires immediately.

Connect the backrest (1) to the booster (7) by hooking the guide lug (16) on the axis (17) of the booster (7). Place

the impact shield (6) on the booster.

**i WARNING!** Always ensure that the individual components of the child seat are never compressed or jammed (e.g. by jamming in the car door or when adjusting the back seat).

**NOTE!** Always keep these instructions to hand (e.g. in the designated compartment on the bottom of the booster seat).



## POSITIONING THE SEAT CORRECTLY IN THE VEHICLE



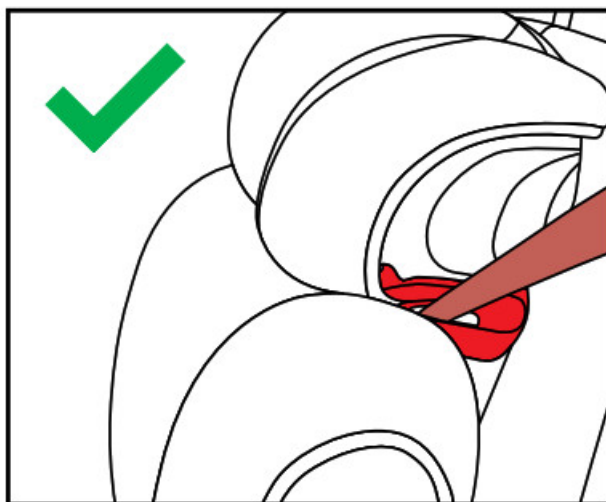
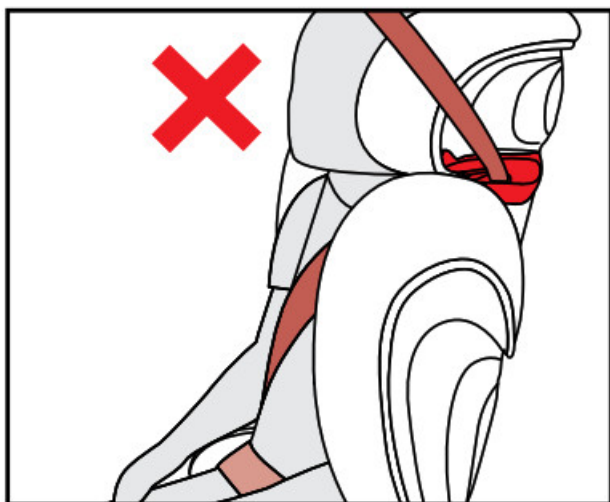
The child seat with stored Latch-Connect System system can be used on all vehicle seats with automatic three-point safety belts approved in the vehicle manual for “universal” use.

**i WARNING!** The seat is not suitable for use with a two-point or lap belt. If the seat is secured using a two-point belt, an accident may result in severe or even fatal injuries to the child.

A “semi-universal” certification is given to restraint systems that are connected to the car through the Latch-Connect-System.

For this reason, the Latch-Connect System can only be used in certain vehicles. Please refer to the enclosed vehicle type list for approved vehicles. You can obtain the most up-to-date version from [www.cybex-online.com](http://www.cybex-online.com). In exceptional cases, the child seat may also be used on the front passenger seat. Please note the following in this case:

- In cars with airbags, you should push the passenger seat back as far as possible. When doing so, however, ensure that the upper pivot point of the safety belt is behind the belt feed point of the child seat, that the belt can retract correctly.
- Always comply with the recommendations of the vehicle manufacturer.



**i WARNING!** The diagonal belt must run back at a recline and must never run forward to the upper belt point in your vehicle. If it is not possible to adjust the seat in this way, e.g. by pushing the child seat forward or using it on another seat, this child seat is not suitable for your vehicle.

**i WARNING!** Luggage or other objects present in the vehicle that may cause injury in the event of an accident must always be firmly secured. Otherwise, they may be thrown, causing fatal injuries.

**i WARNING!** The child seat may not be used on child seats facing to the side of the direction of travel. Use of the child seat is permitted on rear-facing seats, e.g. in a van or minibus, provided that the seat is permitted for transporting an adult. Please note that the vehicle headrest must not be removed when fitting on a rear-facing seat! Even if not in use, the child seat must always be secured with the safety belt.

**NOTE!** Never leave your child unattended in the vehicle.





## SAFETY IN THE VEHICLE

**i WARNING!** The child seat must always be secured correctly with the vehicle belt in the vehicle even when not in use. In case of an emergency brake or accident, an unsecured child seat may injure other passengers or you. In order to guarantee the best possible safety for all passengers make sure that...

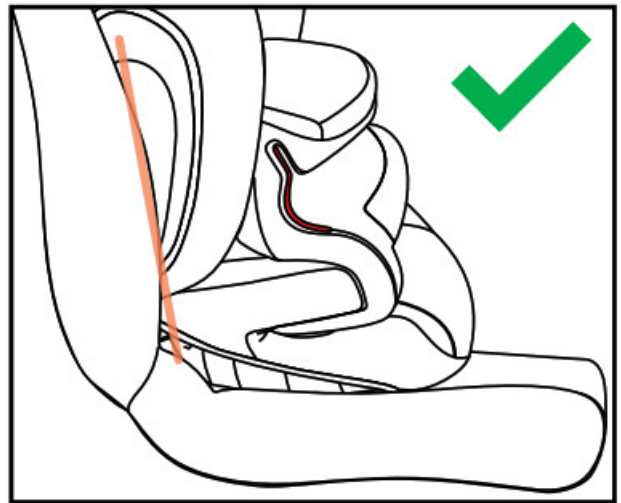
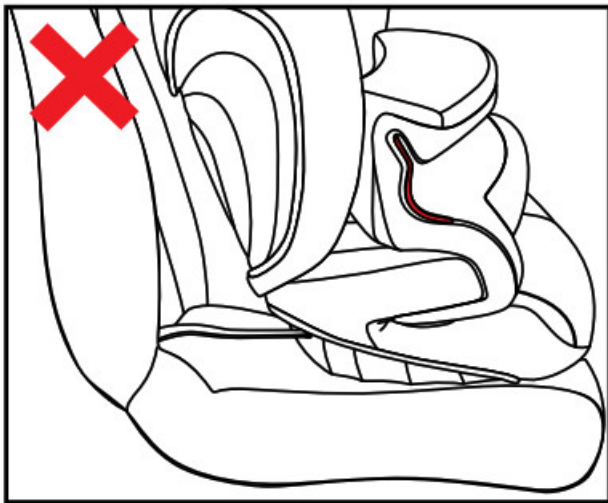
- the foldable backrests in the vehicle are locked in their upright position.
- when installing the child seat on the front passenger seat, adjust the vehicle seat in rearmost position.
- you properly secure all objects likely to cause injury in the case of an accident.
- all passengers in the vehicle are buckled up.

## PLACING THE SEAT IN THE VEHICLE

Place the child seat on the appropriate seat in the car.

- Always ensure that the entire surface of the backrest (1) of the CYBEX Pallas B-fix is placed against the backrest of the vehicle seat. When using the Latch-Connect System, you can adjust the distance using the adjuster (2).
- If the headrest of the vehicle is in the way, pull it out all the way or remove it completely (for exceptions to this,

please refer to the section (“POSITIONING THE SEAT CORRECTLY IN THE VEHICLE”).

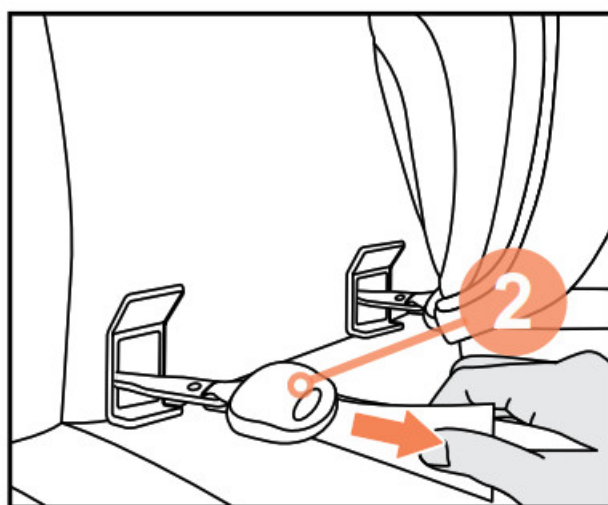
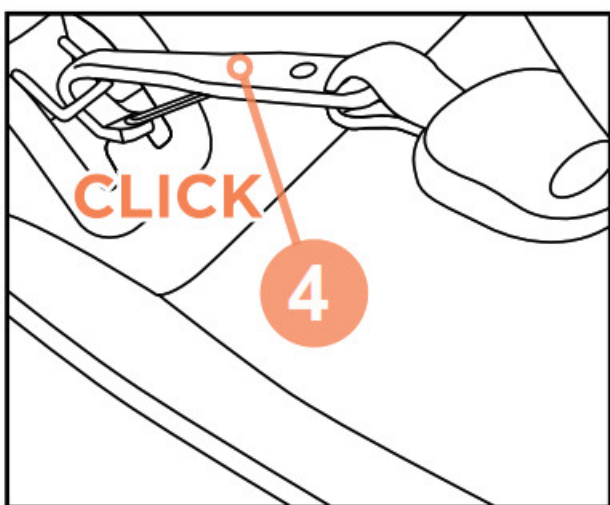
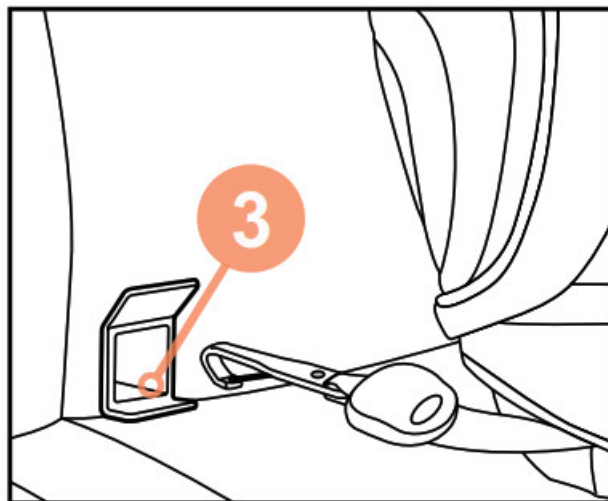
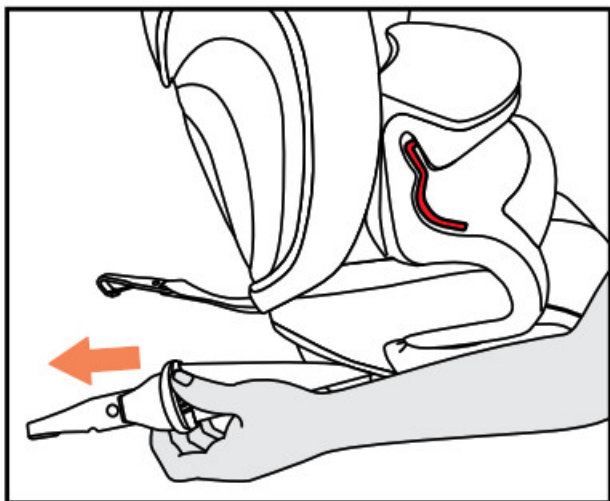


**i WARNING!** The full surface of the backrest of the CYBEX child seat must be against the backrest of the vehicle. To ensure maximum protection for your child, the seat must be in a normal upright position!

**NOTE!** On some car seats made of sensitive materials (e.g. suede, leather etc.), the use of child seats may leave marks and/or cause discolouration. To prevent this, you can place a blanket or towel underneath it, for example. Please also refer in this connection to our cleaning advises in these usage instructions; these cleaning instructions must be observed prior to using the seat for the first time.

**i WARNING!** Do not use any load bearing contact points other than those described in the instructions and marked on the child restraint.





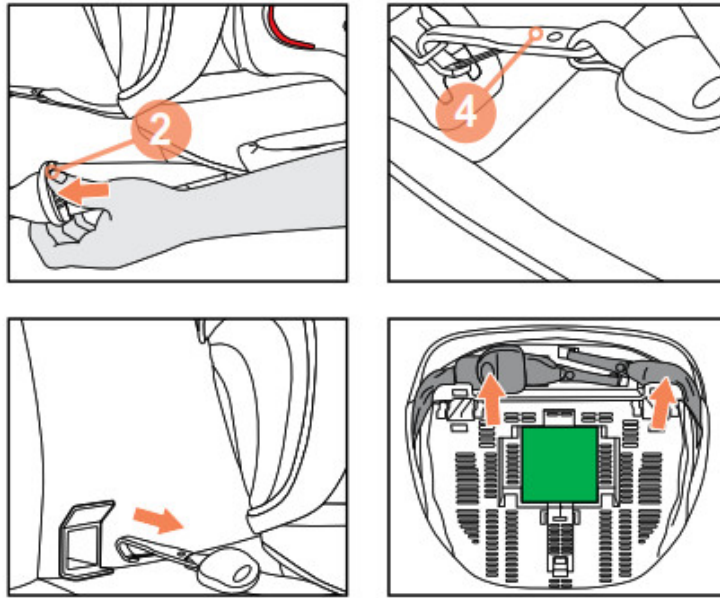
## SECURING THE CHILD SEAT USING THE LATCHCONNECT SYSTEM

Using the Latch-Connect System system, you can fix the CYBEX Pallas B-fix to the vehicle, thereby increasing your child's safety. The child still needs to be secured with the three-point belt of your vehicle and the impact shield for Group 1.

**NOTE!** The ISOFIX fixture points (3) are two metallic clips for each seat and are positioned between the backrest and the seating surface of the vehicle seat. In case of doubt, please refer to the driver's manual of your vehicle.

- Elongate the straps of the Latch-Connect System by using the adjuster (2).
- Attach the Latch-Connect hooks (4) to the ISOFIX attachment points (3).
- Tighten the Latch-Connect System by pulling the strap on the adjuster until the position of the child seat is adjusted correctly.
- Ensure that the seat is secure by trying to pull it out of the ISOFIX fixture points (3).

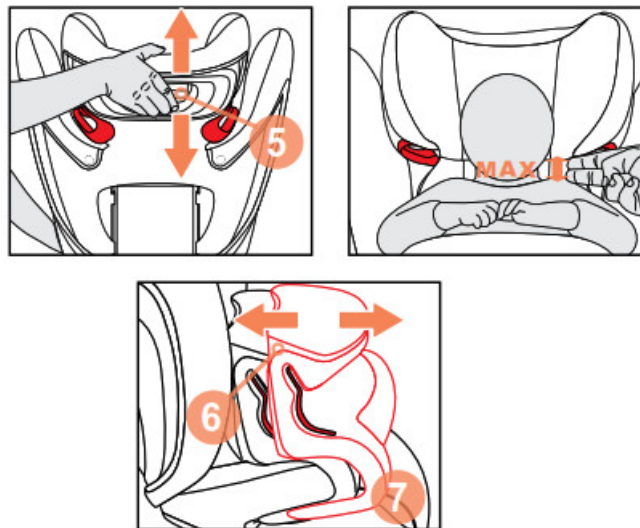
**NOTE!** Note the information in the section "PLACING THE SEAT IN THE VEHICLE".



## REMOVAL OF THE CHILD SEAT

Perform the installation steps in the reverse order.

- Release the tightened straps using the adjuster (2).
- Disconnect the latches (4) on both sides.
- Remove the child seat.
- You can store the Latch-Connect system in the booster of the child seat.



## ADAPTING TO BODY SIZE

### Adjustment of the headrest

- The headrest must be adjusted so that max. 2cm (ca. two finger's width) or less remains free between the child's shoulder and the headrest.
- Push the adjustment button (5) on the rear side of the headrest and move it into the desired position.

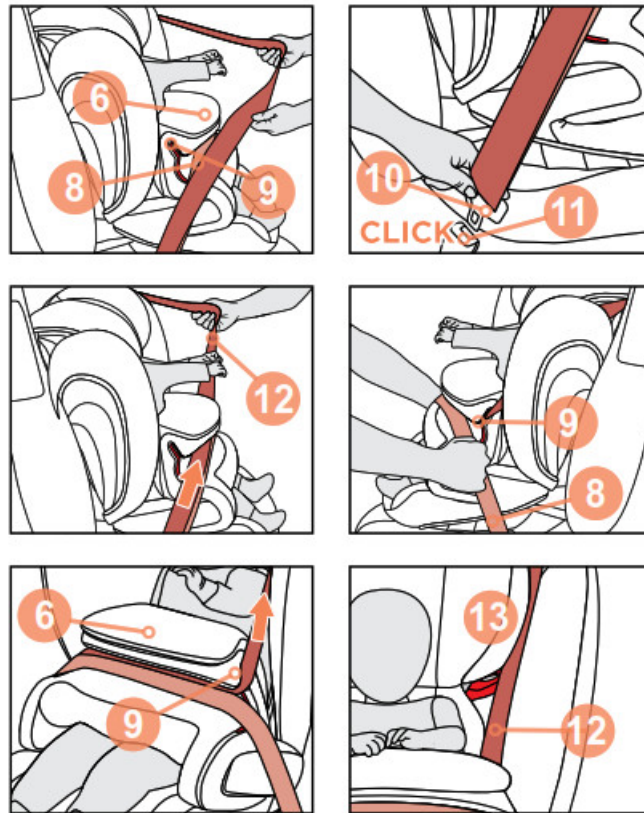
**NOTE!** Only an optimally adjusted headrest can offer your child maximum protection and comfort while ensuring

that the diagonal belt can be fitted smoothly. The height of the CYBEX Pallas B-fix can be adjusted to one of twelve positions.

**ADJUSTING THE IMPACT SHIELD – GROUP 1 (9-18 KG)** The side flaps of the impact shield (6) fit exactly between the arm rests and seating surface of the booster (7) and are used to support the impact shield (6) on the seat.

Adjust the impact shield (6) so that it rests against the child without pushing against the child's body.

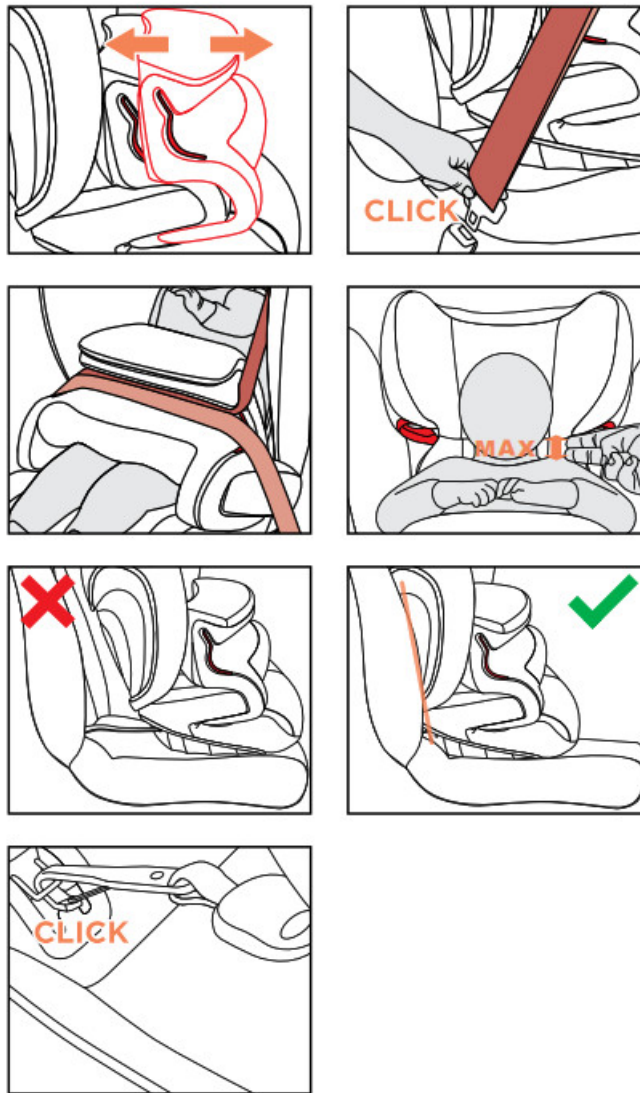
**i WARNING!** The impact shield (6) may only be used in conjunction with the child seat up to a maximum of 18 kg!



### **STRAPPING WITH THE IMPACT SHIELD – GROUP 1 (9-18 KG)**

- Insert the impact shield (6) (refer to the section “ADJUSTING THE IMPACT SHIELD”).
- Pull out the entire length of the vehicle seat belt. Take the lap belt (8) and place it over the designated red belt routing (9) on the impact shield (6).
- Lock the vehicle seat belt (10) into the belt buckle (11). It must lock into place with an audible “CLICK”.
- Tighten the lap belt (8) by pulling the diagonal belt (12).
- Now feed the diagonal belt (12) in parallel with the lap belt (8) back into the belt routing (9).
- Pull the diagonal belt (12) tight and ensure that both parts of the belt cover the entire width of the impact shield (6) in the belt routing (9).
- Now feed the diagonal belt (12) tightly through the belt routing (9) of the impact shield (6) until it is clamped inside the belt guide. Then put the diagonal belt between headrest (13) and shoulder rest. The diagonal belt does not need to be guided through the headrest belt guide for group 2/3.

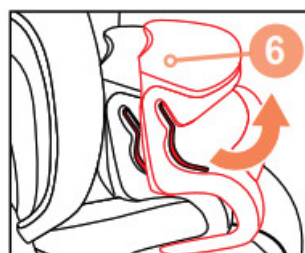
**i WARNING!** Always check the tightness and the right adjustment of the restraint system to the child's body. Never twist the belt!



#### IS YOUR CHILD CORRECTLY SECURED? – IMPACT SHIELD GROUP (9-18KG)

To ensure optimum safety for your child, please always check before commencing travel that

- the impact shield is correctly adjusted.
- the belt tongue has locked into place in the belt buckle.
- the lap belt and the shoulder belt are running taut through the belt routing of the impact shield and are not twisted.
- the headrest is adjusted correctly.
- the backrest of the child seat lies completely flush with the backrest of the child seat.
- if the Latch-Connect System is used: the seat has locked into place on both sides with the latches into the ISOFIX anchorage points and the system is tightened.

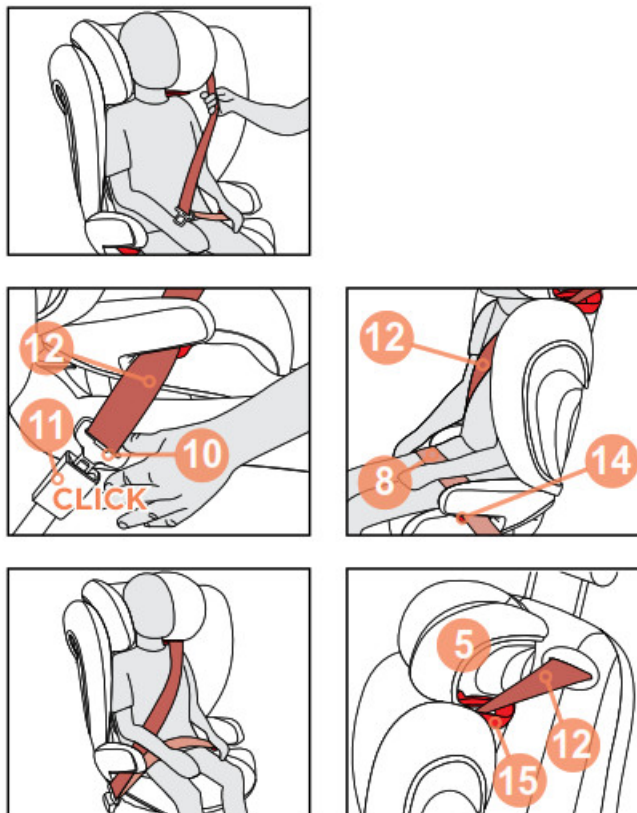


#### SWITCHING FROM PALLAS B-FIX TO SOLUTION B-FIX (GROUP 1 TO GROUP 2/3)

- Remove the impact shield (6).
- Note the information in the section “FASTENING YOUR CHILD’S SEATBELT GROUP 2/3 (15-36 KG)”

**NOTE!** Keep the impact shield in a safe and secure place.

**i WARNING!** For usage in Group 1 (9-18 kg) the impact shield must be used.



### FASTENING YOUR CHILD’S SEATBELT GROUP 2/3 (15-36 KG)

- Place your child in the child seat. Pull the three-point belt right out and feed it along the belt buckle (11) in front of your child.

**NOTE!** The three-point belt must only be passed through the designated routings. The belt routings are described in detail in this manual and are marked in red on the child seat.

**i WARNING!** Never twist the belt.

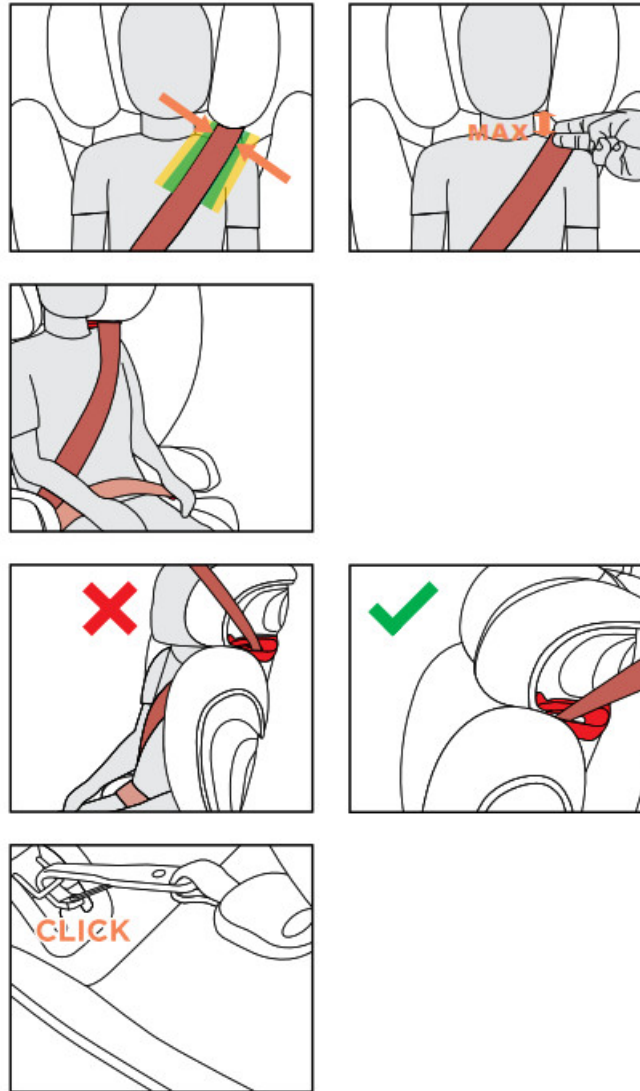
- Insert the belt tongue (10) into the belt buckle (11). It must lock into place with an audible “CLICK”.
- Next, place and tighten the lap belt (8) in the red colored lower belt guides (14) of the child seat.
- Now pull the diagonal belt (12) firmly to tighten the lap belt (8). The tighter the belt sits, the better it provides protection from injury. On the side of the belt buckle (11), the diagonal belt (12) and the lap belt (8) must be inserted together in the lower belt guide (14).
- The lap belt (8) should have been fed through the lower belt guides (14) on both sides of the booster seat.
- Now feed the diagonal belt (12) through the upper belt guide (15) in the headrest (5) until it is inside the belt guide.



**NOTE!** Teach your child from the start to always ensure that the belt is tight and, if necessary, how to tighten the belt themselves.

**i WARNING!** The lap belt (8) must run as low as possible on both sides along your child's groin to have optimum effect in the event of an accident.

Ensure that the diagonal belt (12) runs between the outside of the shoulder and the neck of your child. If necessary, adjust the height of the headrest to change the position of the belt. The height of the headrest (5) can still be adjusted while in the car.



### IS YOUR CHILD CORRECTLY SECURED? – VEHICLE BELT GROUP 2/3 (15-36 KG)

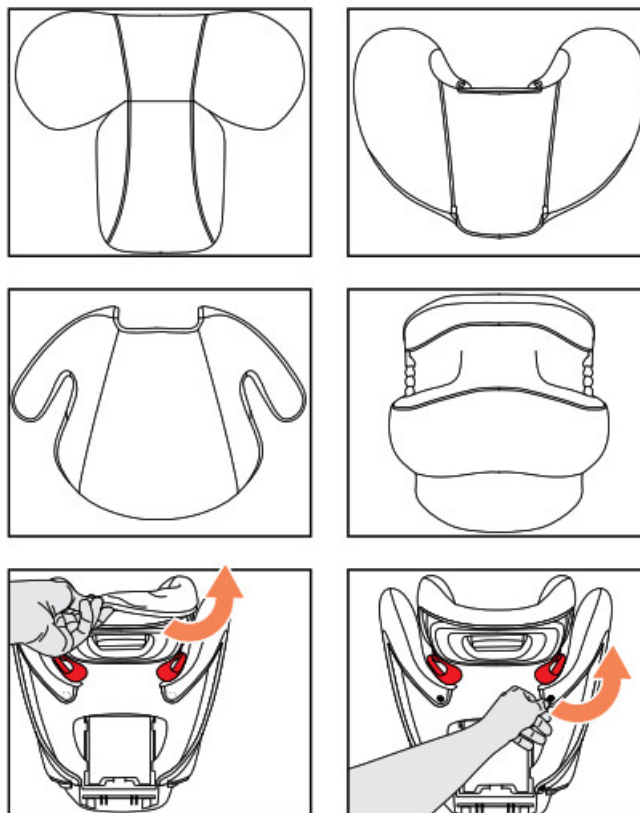
To ensure optimum safety for your child, please always check before commencing travel that...

- the headrest is adjusted correctly
- the lap belt has been fed through the lower red belt guides on both sides of the booster seat.
- the diagonal belt on the belt buckle side has also been fed through the lower red belt guide of the seat.
- the diagonal belt has been fed through the upper belt guide marked red in the headrest.
- the diagonal belt is at a recline backwards.
- the entire belt is tightly against your child's body and is not twisted.
- if the Latch-Connect System is used: the seat has locked into place on both sides with the latches into the ISOFIX anchorage points and the system is tightened.



**i WARNING!** The vehicle belt buckle must never cross the arm rest. If the belt whip is too long, the child seat is not suitable for use in this position in the vehicle. In case of doubt, please consult the manufacturer.

**i WARNING!** Never leave your child unattended in the car. The plastic parts in the child restraint system heat up in sun and the child may sustain burns. Protect your child and the child seat from direct sun exposure (e.g. by covering it with a light colored cloth).



## REMOVING THE SEAT COVER

The cover of the child seat consists of four parts (headrest, shoulder part, booster, impact shield). The four covers of the seat are held in position at several places by press-studs (see image). Once all studs have been released, the single parts of the cover can be removed. In order to put the covers back on the seat, proceed in the reversed order as removing them.

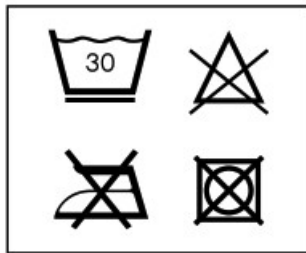
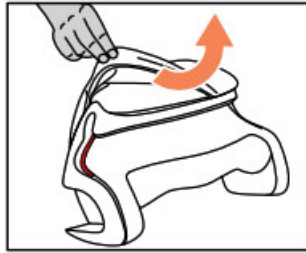
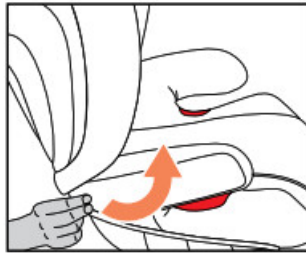
**i WARNING!** The child seat must never be used without the cover.

### Removing the cover from the head support

Remove the cover by pulling it forwards.

Removing the cover from the shoulder part

Release the four press-studs on the rear side of the child seat. Remove the cover.



### Removing the cover from the booster

Release the 2 press-studs of the seat cover at the front and the back. Now, pull off the cover over the armrests and along the seat surface.

### Removing the cover from the impact shield

Pull off the cover around the cushion.

## CLEANING

**NOTE!** Please wash the cover before you use it the first time. The cover may only be washed at 30 °C with a delicate wash program. Washing at more than 30°C may result in discolouration of the cover fabric. Please wash the cover separately from other laundry and do not dry in the dryer! Never dry the cover in direct sunlight! The plastic parts can be cleaned with a mild cleaning agent and warm water.



**WARNING!** Never use harsh cleaning agents or bleaches!

## CARE & MAINTENANCE

To ensure that your child seat provides maximum protection, it is imperative that you note the following:

- All major parts of the child seat should be checked regularly for damage. The mechanical components must be free of defects.
- It is absolutely necessary to ensure that the child seat is not jammed between hard elements such as the vehicle door or seat rail, which could potentially damage it.
- When exposed to extreme shock, e.g. after a crash, the child seat must be checked by the manufacturer.

Ensure that only an original CYBEX seat cover is used, as the cover is a key element of the seat's function. Spare covers can be obtained from a specialist retailer.

## HOW TO ACT FOLLOWING AN ACCIDENT

**i** **WARNING!** An accident may cause damage to the child seat that is not identifiable with the naked eye. Please replace the seat after an accident. In case of doubt, please consult your dealer or the manufacturer.

## PRODUCT LIFESPAN

This child seat has been designed to be able to fulfill its intended functions by ordinary use for a product life span of approx. 11 years. Gradual wear of the plastic, for example caused by exposure to sunlight (UV), can cause slight deterioration of the product's properties. Since very high temperature fluctuations and other unforeseeable stresses are common in vehicles, it is necessary to observe the following points:

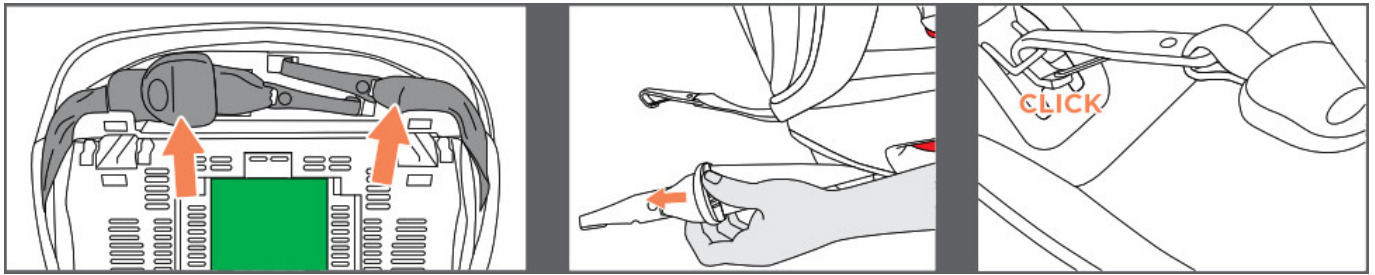
- If the vehicle is directly exposed to strong sunlight for long periods, the child seat must be removed from the vehicle or covered with a light cloth.
- Check all plastic and metal parts of the seat regularly for damage or change of shape or colour. If you notice any change in the child seat, the seat must be disposed or checked and possibly replaced by the manufacturer.
- Changes to the fabric, especially fading, are normal when used in a vehicle and do not impair the seat's function.

## DISPOSAL

At the end of the child seat's service life, it must be disposed of correctly. The separation of waste may be handled differently from place to place. To ensure that the child seat is disposed of in accordance with regulations, please contact your local waste disposal institution or local council. Always observe the waste disposal regulations of your country.

## WARRANTY CONDITIONS

The following warranty conditions only apply to the country in which this product was first sold through retail channels to a consumer. This warranty covers all manufacturing and material defects that existed at the time of purchase or which manifest themselves within three (3) years of first sale of this product via retail channels to a consumer (manufacturer warranty). If a manufacturing or material defect arises during the warranty period, the product will be repaired at no charge or – at our discretion – may be replaced by a new one. In order to make a claim on this warranty, the product must be returned to the retailer that first sold it and the original proof of purchase (receipt or invoice), containing the date of purchase, name and address of the retailer, and the product name, must be presented. No claims may be made on this warranty if the product is sent to the manufacturer or any other person than the retailer having first sold it for the purpose of making a claim on the warranty. The warranty only applies if the product was checked for completeness, manufacturing defects and material defects immediately upon purchase. If the product was purchased by way of a mail order outlet, it must be checked for completeness, manufacturing defects and material defects immediately upon receipt. If damage arises, the product may no longer be used and must be returned to the retailer that originally sold it. When claiming on the warranty, the product must be returned in a complete and clean state. Please read the usage instructions carefully before contacting the retailer. The warranty does not cover damage caused by misuse, external influences (water, fire, traffic accidents etc.) or normal wear and tear. Claims on the warranty will only be honoured if the product is treated and used in accordance with the usage instructions, repairs and modifications are only performed by persons authorised to do so, and only original parts and accessories are used. This warranty does not nullify or limit in any way any consumer rights or rights against the seller based on infringement of the purchase agreement granted by applicable legislation.



CYBEX GmbH

Riedingerstr. 18 | 95448 Bayreuth | Germany

[INFO@CYBEX-ONLINE.COM](mailto:INFO@CYBEX-ONLINE.COM)

[WWW.CYBEX-ONLINE.COM](http://WWW.CYBEX-ONLINE.COM)

[WWW.FACEBOOK.COM/CYBEX.ONLINE](https://WWW.FACEBOOK.COM/CYBEX.ONLINE)




<https://cybex-online.com/en-en/car-seats/pallasbfix>

GO TO [WWW.CYBEX-ONLINE.COM](http://WWW.CYBEX-ONLINE.COM)

TO WATCH AN INSTRUCTIONAL VIDEO

CY\_171\_6452\_A0919

## Documents / Resources

	<a href="#">cybex Pallas B-Fix</a> [pdf] User Guide Pallas B-Fix
---	---

## References

- [CYBEX Online Shop | Child Car Seats, Strollers, Baby Carriers and Furniture from CYBEX](#)