



cybex Gi I-SIZE Newborn Inlay Instruction Manual

[Home](#) » [CYBEX](#) » **cybex Gi I-SIZE Newborn Inlay Instruction Manual** 

Contents

- [1 cybex Gi I-SIZE Newborn Inlay](#)
- [2 Product Information](#)
- [3 Product Usage Instructions](#)
- [4 Installation of the Newborn Inlay](#)
- [5 PRODUCT PARTS](#)
- [6 OVERVIEW](#)
- [7 INSTALLATION OF THE OPTIONAL ADDITIONAL INSERT](#)
- [8 Documents / Resources](#)
 - [8.1 References](#)
- [9 Related Posts](#)



cybex Gi I-SIZE Newborn Inlay



Product Information

The Sirona Gi i-Size newborn inlay is a product designed to be used with the CYBEX Sirona Gi i-Size car seat. The product includes a newborn inlay, an optional additional insert (comfort inlay), shoulder belts, belt buckle, headrest of the newborn inlay, side pads of the newborn inlay, lap belts, and seat surface of the newborn inlay. The usage of this product is permitted with the CYBEX Sirona Gi i-Size car seat only. The optional additional insert must only be used in combination with the newborn inlay. The optional additional insert must be removed after the child exceeds a height of 48 cm.

Product Usage Instructions

1. Loosen the shoulder belts and open the belt buckle.
2. Move the headrest into a higher position.
3. Put the optional additional insert onto the seating surface below the soft goods cover after flipping the cover to the front.
4. Put the cover back and push it into the gap behind the optional additional insert.
5. Adjust the headrest to the lowest position. Make sure that it is guided behind the optional additional insert.
6. Take the newborn inlay and place it in the child seat as described in the chapter Installation of the newborn inlay.

Installation of the Newborn Inlay

The Newborn inlay allows the Sirona Gi i-Size to be used from 40 cm. When your child reaches a height of 60 cm, it should be removed again.

1. To use the Newborn Inlay with the child seat, loosen the shoulder belts and open the belt buckle.
2. Now take the newborn inlay and place it in the child seat.
3. Place the shoulder belts right and left next to the headrest of the newborn inlay, above the side pads of the newborn inlay. Then, guide the lap belts on the right and left through the cut-outs provided between the side pads and the seat surface of the newborn inlay.
4. The seat can now be used for your baby. The restraining process is described in the user guide of the car seat.

CERTIFICATION

Sirona Gi i-Size
UN R129/03
with Newborn inlay
Size range: 40 – 105 cm



Thank you for choosing the Sirona Gi i-Size newborn inlay (1).

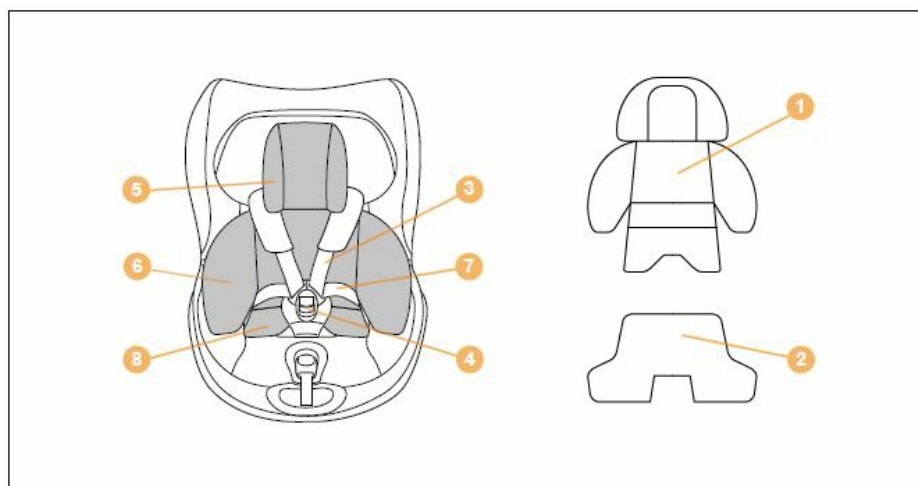
Carefully read this user guide before installing the newborn inlay (1) on the Sirona Gi i-Size car seat. Always keep the guide to hand in the designated compartment of the Sirona Gi i-Size.

The usage of this newborn inlay (1), as well as the enclosed optional additional insert (comfort inlay) (2), is permitted with the CYBEX Sirona Gi i-Size car seat only.

PRODUCT PARTS

- Newborn inlay (1)
- Optional additional insert (2)
- Shoulder belts (3)
- Belt buckle (4)
- Headrest of the newborn inlay (5)
- Side pads of the newborn inlay (6)
- Lap belts (7)
- Seat surface of the newborn inlay (8)

OVERVIEW

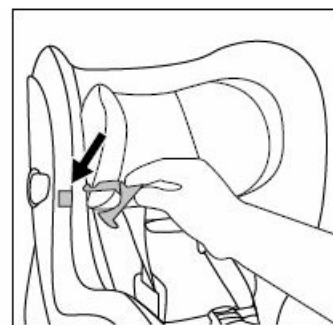
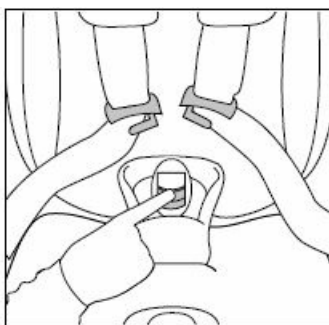
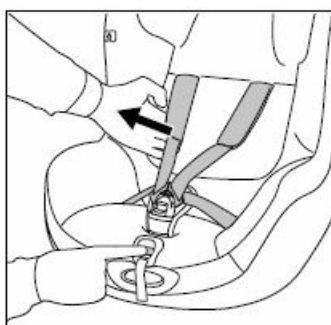


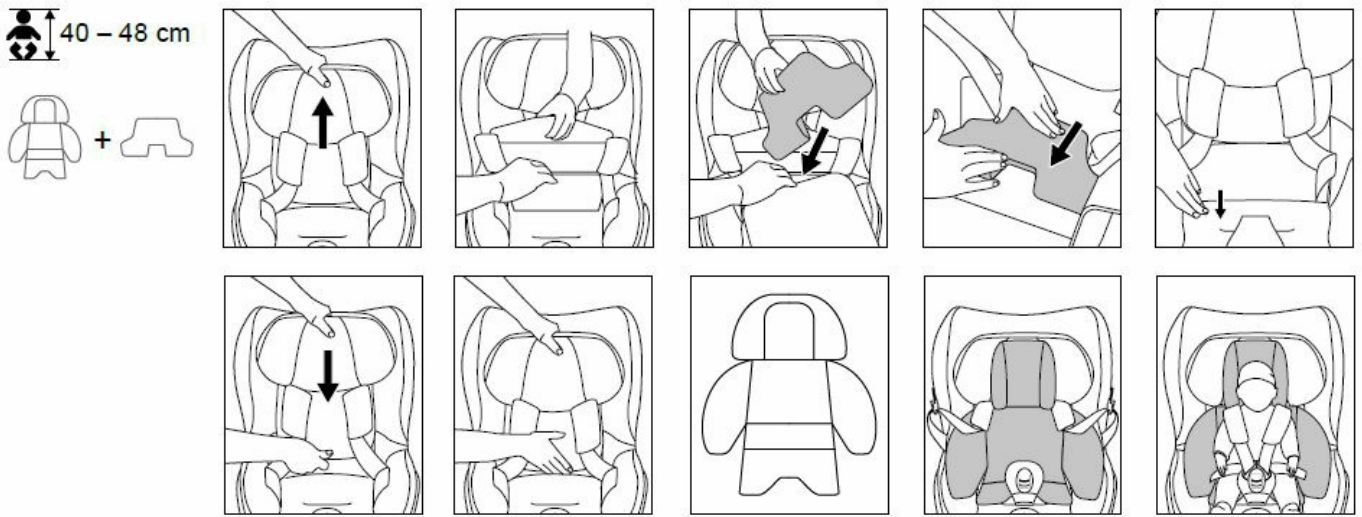
		
 40 – 48 cm	✓	✓
 48 – 60 cm	✓	✗
 61 – 105 cm	✗	✗

INSTALLATION OF THE OPTIONAL ADDITIONAL INSERT

The package contains an optional additional insert (2) for small Newborns. It is designed to improve the seating position of premature and newborn children. It must be removed from the child seat once the child reaches a height of 48 cm. If your baby is above 48 cm when first using the car seat, the insert is not needed and you can directly proceed reading the chapter “Installation of the newborn inlay”.

1. To use the optional additional insert (2) with the child seat loosen the Shoulder belts (3) and open the Belt buckle (4).
2. Move the headrest into a higher position.
3. Put the optional additional insert (2) onto the seating surface below the soft goods cover after flipping the cover to the front.
4. Put the cover back and push it into the gap behind the optional additional insert (2).
5. Adjust the headrest to the lowest position. Make sure that it is guided behind the optional additional insert (2).
6. Now take the newborn inlay (1) and place it in the child seat as described in the chapter “Installation of the newborn inlay”.





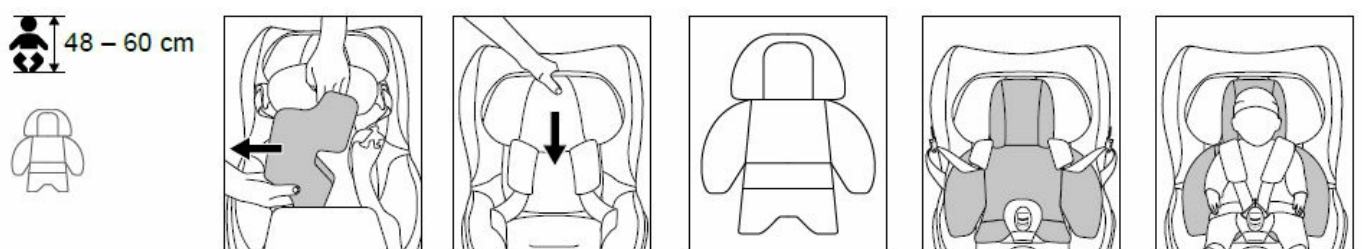
The optional additional insert must only be used in combination with the newborn inlay.

The optional additional insert must be removed after the child exceeds a height of 48 cm.

INSTALLATION OF THE NEWBORN INLAY

The Newborn inlay (1) allows the Sirona Gi i-Size to be used from 40 cm. When your child reaches a height of 60 cm, it should be removed again.

1. To use the Newborn Inlay (1) with the child seat loosen the Shoulder belts (3) and open the Belt buckle (4) .
2. Now take the Newborn inlay (1) and place it in the child seat.
3. Place the Shoulder belts (3) right and left next to the Headrest of the newborn inlay (5), above the Side pads of the newborn inlay (6). Then, guide the Lap belts (7) on the right and left through the cut-outs provided between the Side pads (6) and the Seat surface of the newborn inlay (8).
4. The seat can now be used for your baby. The restraining process is described in the user guide of the car seat.



Adjusting the headrest in an upward position makes it easier to insert the newborn inlay. Make sure that the headrest has been returned to the appropriate position before starting to drive.

CLEANING OF THE COVER

Before you wash the Newborn inlay (1), both foams must be removed. There are openings in the fabric for this purpose.

The cover may only be washed at 30°C with a delicate wash program otherwise it may result in discolouration of the cover fabric. Please wash the cover separately from other laundry and do not dry it in the dryer or in direct sunlight!

MANUFACTURER'S WARRANTY AND DISPOSAL REGULATION

CYBEX GmbH (Riedingerstr. 18, 95448 Bayreuth, Germany) gives you 3 years warranty on this product. The warranty is valid in the country where this product was initially sold by a retailer to a customer. The contents of the warranty and all essential information required for the assertion of the warranty can be found on our homepage: go.cybex-online.com/manufacturervarranty – car-seats. If a warranty is shown in the article description, your legal rights against us for defects remain unaffected. Please observe the waste disposal regulations in your country.


CYBEX GmbH

Riedingerstr. 18 | 95448 Bayreuth | Germany

INFO@CYBEX-ONLINE.COM / WWW.CYBEX-ONLINE.COM

WWW.FACEBOOK.COM/CYBEX.ONLINE

Documents / Resources

	cybex Gi I-SIZE Newborn Inlay [pdf] Instruction Manual CY_171_9953_A0323, Gi I-SIZE, Gi I-SIZE Newborn Inlay, Newborn Inlay, Inlay
---	---

References

- go.cybex-online.com/manufacturervarranty-car-seats
- [CYBEX Online Shop | Child Car Seats, Strollers, Baby Carriers and Furniture from CYBEX](#)