

[Skip to content](#)

Manuals+

User Manuals Simplified.



CYBEX ATON User Guide

[Home](#) » [CYBEX](#) » CYBEX ATON User Guide

Contents [hide](#)

[1 CYBEX ATON](#)

[2 Contents](#)

[3 INSTALLING THE SEAT](#)

[4 PRODUCT CARE](#)

[5 WARRANTY](#)

[6 Documents / Resources](#)

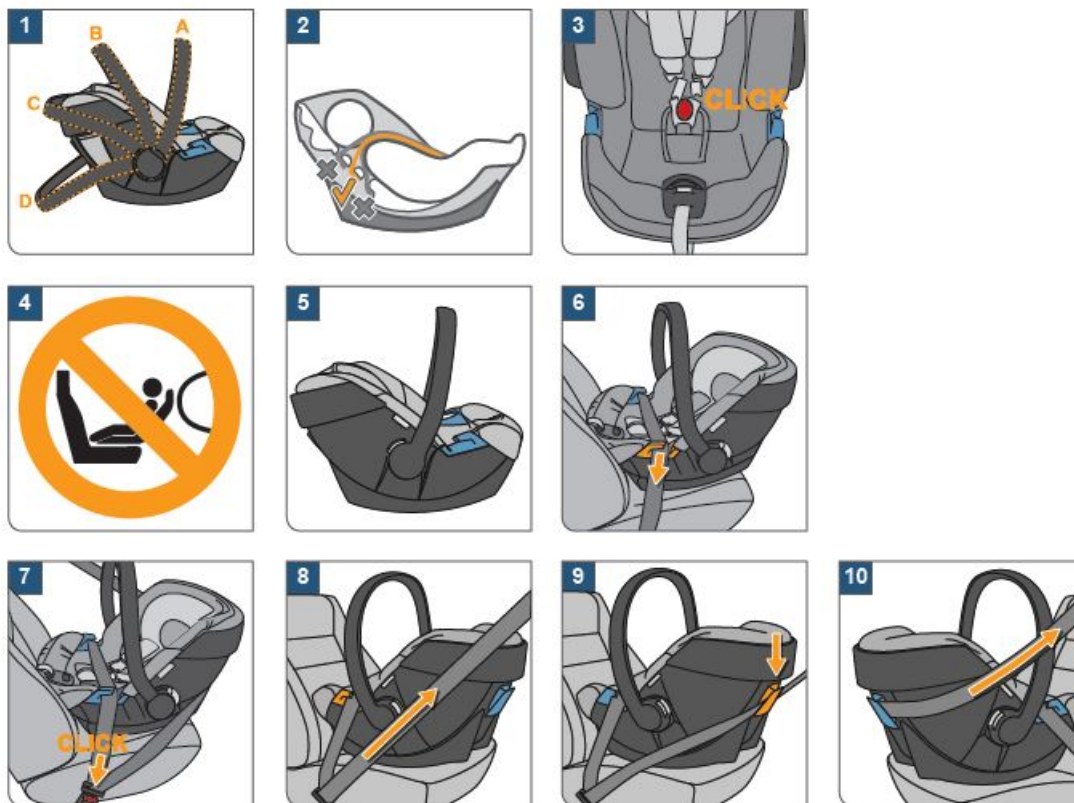
[7 Related Posts](#)



CYBEX ATON



WARNING! This short manual serves as an overview only. For maximum protection and best comfort for your child it is essential to read and follow the entire instruction manual carefully. Correct **Order**: Baby seat initial setup – fasten child – fasten baby seat in the car.



Contents

APPROVAL CYBEX ATON – baby car seat ECE R44/04 group 0+

Age: To approximately 18 months

Weight: Up to 13 kg

RECOMMENDED FOR: For vehicle seats with three-point automatic retractor belt according to ECE R16

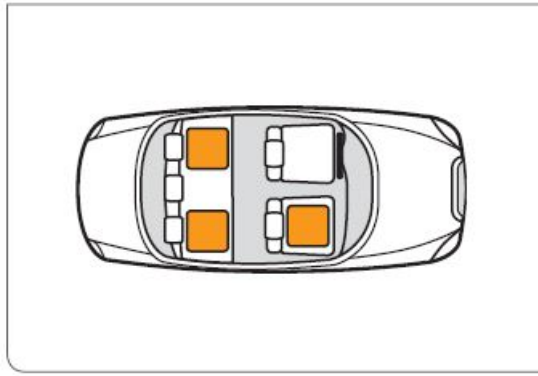
DEAR CUSTOMER

Thank you very much for purchasing the CYBEX ATON. We assure you that in the development process of the CYBEX ATON we focused on safety, comfort and user friendliness. The product is manufactured under special quality surveillance and complies with the strictest safety requirements.

WARNING! For proper protection of your child, it is essential to use and install the CYBEX ATON according to the instructions given in this manual.

NOTE! According to local codes the product characteristic can be different.

NOTE! Please always have the instruction manual at hand and store it in the dedicated slot under the seat.



THE BEST POSITION IN THE CAR

WARNING! Approval of the seat expires immediately in case of any modification!

NOTE! High volume front-airbags expand explosively. This can result in the death or injury of the child.

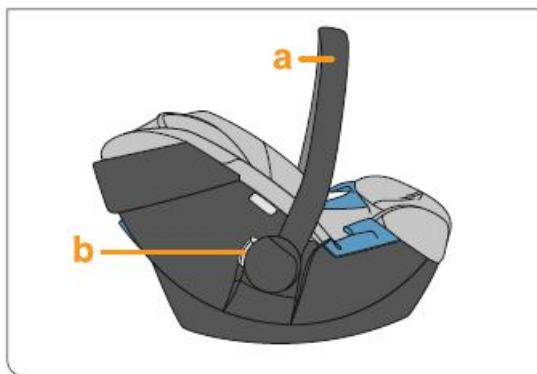
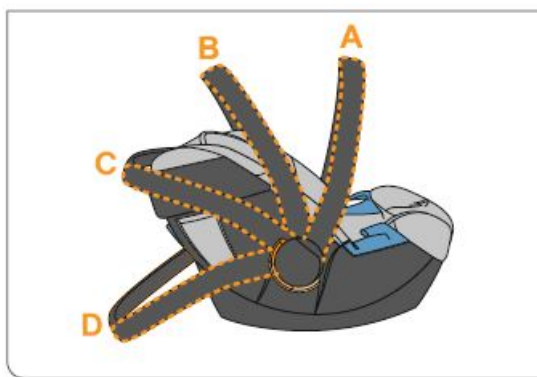
WARNING! Do not use the ATON in front seats equipped with activated front-airbag. This does not apply to so-called side-airbags.

NOTE! If the baby seat is not stable or sits too steeply in the car, you can use a blanket or a towel to compensate. Alternatively, you should choose another place in the car.

WARNING! Never hold a baby on your lap while driving. Due to the enormous forces released in an accident, it will be impossible to hold onto the baby. Never use the same seat belt to secure yourself and the child.

FOR THE PROTECTION OF YOUR CAR

On some car seat covers which are made of a sensitive material (e.g. velour, leather etc.) the use of child seats may lead to traces of wear and tear. In order to avoid this, you should put a blanket or a towel underneath the child seat.



CARRYING HANDLE ADJUSTMENT.

WARNING! Always secure the baby with the integrated harness system.

The carrying handle can be adjusted into four different positions:

A: Carrying/Driving-Position.

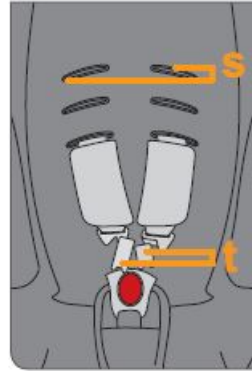
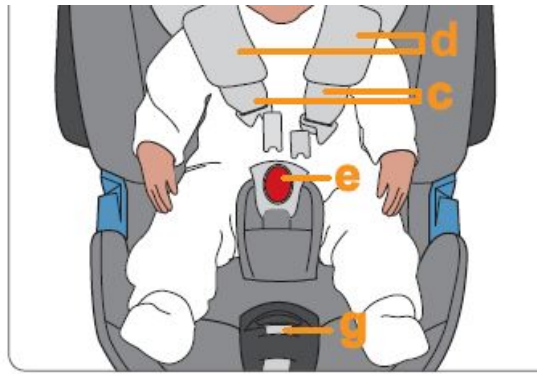
B+C: For placing the baby in the seat.

D: Safe sitting position outside the car.

NOTE! When using ATON in combination with ATON Base or ATON Base-fix the driving-position of the handle changes from A to B.

WARNING! In order to avoid unwanted tilting of the seat whilst carrying, make sure that the handle is locked in the carrying position A.

- In order to adjust the handle press buttons b on left and right side on the handle a.
- Adjust the carrying handle a to the desired position by pressing the buttons b.



ADJUSTING THE SHOULDER BELTS

NOTE! Only if the shoulder belts c are adjusted correctly optimum security can be provided.

- When the baby is approximately 3 months the seat insert can be removed to provide enough space for the child (see page 26).
- The height of the shoulder belts c must be adjusted in such a way that they run through the belt slots s directly above the baby's shoulders.

To adjust the height of the shoulder belts c please follow the next steps:

- Press the red button to open the buckle e.
- Pull the shoulder pads d over the belt tongues t to remove them.
- First pull one buckle tongue t through the cover and out of the belt slot s. Now insert it again through the next higher slot. Repeat this step to adjust the other side as well.

NOTE! Please make sure that the shoulder belts c are not twisted but should lie flat against the main seat, run evenly through the belt slots s and down to the buckle e.



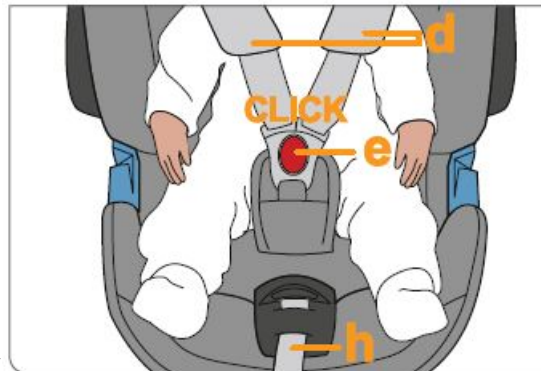
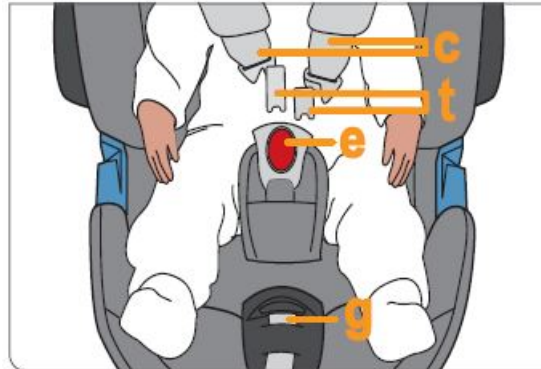
SAFETY FOR YOUR BABY

NOTE! Always secure the baby in the child seat and never leave your child unattended when putting the ATON on elevated surfaces (e.g. diaper changing table, table, bench ...).

WARNING! Plastic parts of ATON heat up in the sun. Your baby may get burnt. Protect your baby and the car seat from intense exposure to the sun (e.g. putting a white blanket over the seat).

- Take your baby out of the car seat as often as possible in order to relax its spine.
- Interrupt longer journeys. Remember this as well, when using the ATON outside the car.

NOTE! Never leave your child in the car unattended.



SECURING THE BABY

NOTE! Please remove all toys and other hard objects from the car seat.

- Open the buckle e.
- To loosen pull up the shoulder belts c while pushing the central adjuster button g and pulling the shoulder belts c up. Please always pull the belt tongues t and not the belt pads d.
- Place your baby into the seat.
- Put the shoulder belts c straight over the baby's shoulders.

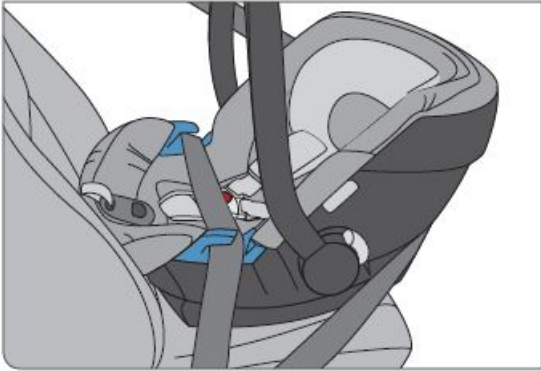
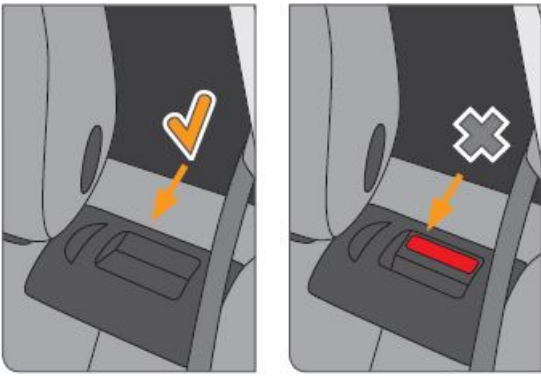
NOTE! Make sure that the shoulder belts c are not twisted.

- Join the buckle tongue sections t together and insert them into the buckle e with an audible **CLICK**. Pull the central adjuster belt h until the shoulder belts fit the baby's body snugly.
- Push the red button to open the buckle e.

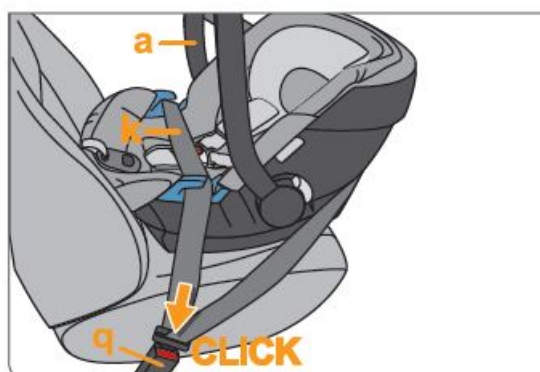
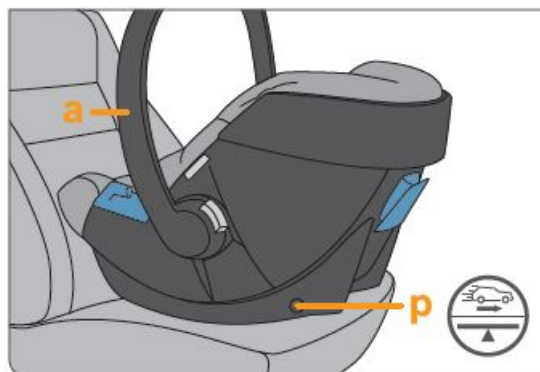
NOTE! Leave a maximum space of one finger between the baby and the shoulder belts.

SAFETY IN THE CAR

In order to guarantee the best possible safety for all passengers make sure that ...



- foldable backrests in the car are locked in their upright position.
- when installing the ATON on the front passenger seat, adjust the car seat in rearmost position.
WARNING! Never use the ATON on a car seat equipped with a front-airbag. This does not apply to so-called side airbags.
- you properly secure all objects likely to cause injury in the case of an accident.
- all passengers in the car are buckled up.
WARNING! The child seat must always be secured with the seat belt even if not in use. In case of an emergency brake or accident, an unsecured child seat may injure other passengers or yourself.



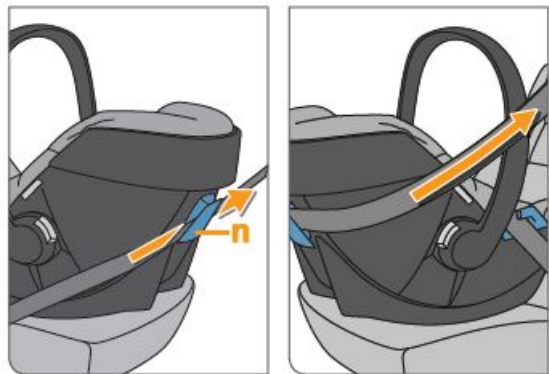
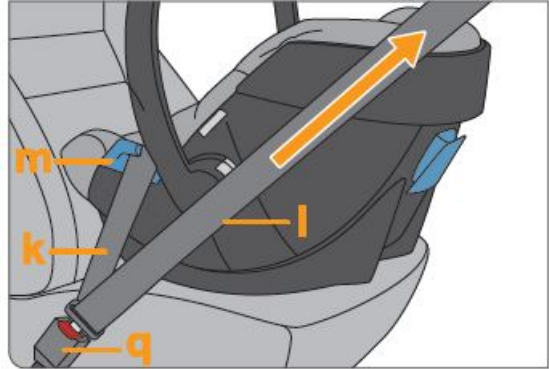
INSTALLING THE SEAT

- Make sure that the carrying handle a is in the upper position A. (see page 9)

- Place the seat against driving position on the car seat. (The feet of the baby point in the direction of the backrest of the car seat).
- CYBEX ATON can be used on all seats with a three-point automatic retractor belt. We generally recommend to use the seat in the back of the vehicle. In the front, your child is usually exposed to higher risks in case of an accident.

WARNING! The seat must not be used with a two-point belt or a lap belt. When securing your child with a two-point belt, this may result in injuries or death of the child.

- Make sure that the horizontal marking on the safety sticker p is parallel to the floor.
- Pull the three-point belt over the child seat.
- Insert the belt tongue into the car belt buckle q.
- Insert the lap belt k into the blue belt guides m on both sides of the car seat.
- Pull the diagonal belt l in driving direction to tighten the lap belt k.



- Pull the diagonal belt l behind the top end of the baby seat.

NOTE! Do not twist the car belt.

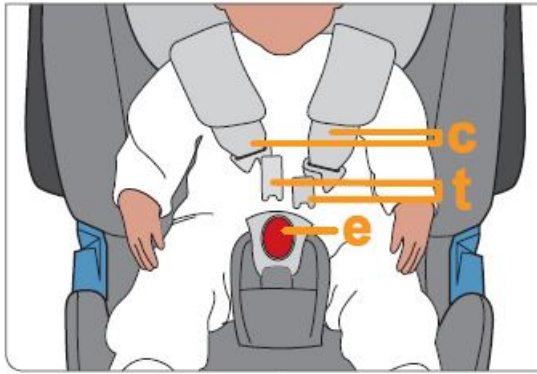
- Bring the diagonal belt l into the blue belt slot n on the back.
- Tighten the diagonal belt l.

WARNING! In some cases the buckle q of the car safety belt may be too long and reach into the belt slots of the CYBEX ATON, making it difficult to install the ATON securely. If this is the case please choose another position in the car.

REMOVING THE CAR SEAT

- Take the seat belt out of the blue belt slot n in the back.
- Open the car buckle q and take the lap belt k out of the blue belt slots m.

SECURING YOUR CHILD CORRECTLY



For the safety of your child please check ...

- if the shoulder belts c fit well to the body without restricting the baby.
- that the headrest is adjusted to the correct height.
- if the shoulder belts c are not twisted.
- if the buckle tongues t are fastened in the buckle e.

SECURING YOUR CHILD CORRECTLY

For the safety of your child please make sure ...

- that the ATON is positioned against driving direction (the feet of the baby point in the direction of the backrest of the car seat).
- if the car seat is installed in front, that the front airbag is deactivated.
- that ATON is secured with a 3-point belt.
- that the lap belt k is running through the belt slots m on each side of the baby seat.
- that the diagonal belt l is running through the blue belt hook n on the back of the baby seat marking).

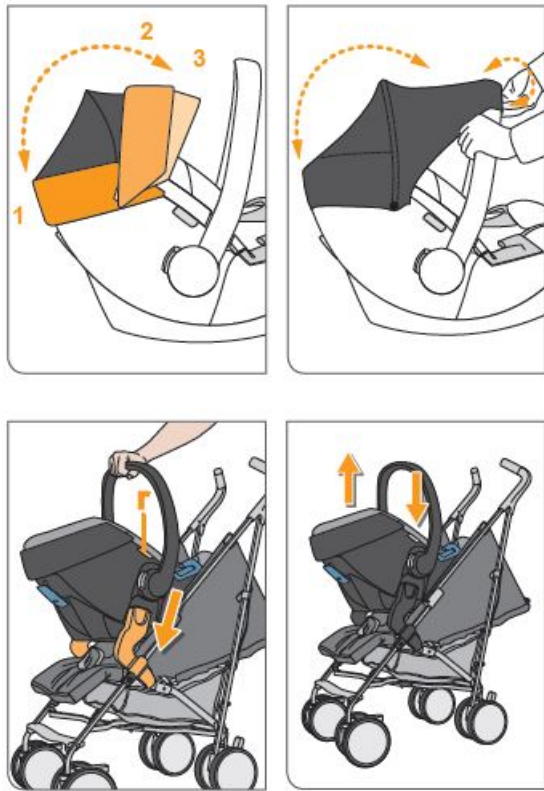
NOTE! The CYBEX ATON is exclusively made for forward facing car seats, which are equipped with a 3-point belt system according to ECE R16.

REMOVING THE INSERT

- The insert, which is preinstalled when purchased, helps to support lying comfort and fit for the smallest babies. In order to remove the insert please loosen the cover in the baby seat, lift the insert a little bit and take it out of the seat.
- The insert may be removed after approx. 3 months to provide more space.
- The adjustable insert x (left picture top of page 34) enhances the comfort of the child up to approx. 9 months. Later the insert can be removed to give the child additional space.

OPENING THE CANOPY

Pull the canopy panel away from the seat and turn the canopy up. To fold away the canopy turn it back to its basic



position.

OPENING THE ATON BASIC CANOPY

Pull the canopy cover over the carrying handle adjustment. Affix the cover on both sides of the handle adjustment via velcro. To fold away the canopy cover release the velcro and pull it over the top end of the baby seat.

CYBEX TRAVEL-SYSTEM

Please follow the instruction manual supplied with your push chair.

In order to attach the CYBEX ATON please place it against driving direction on the adapters of the CYBEX buggy.

You will hear an audible CLICK when the baby seat is locked into the adapters.

Always double check if the baby seat is securely fastened to the buggy.

DEMOUNTING

To unlock the baby seat keep the release buttons pressed and then lift the shell up.

PRODUCT CARE

In order to guarantee the best possible protection for your child, please take note of the following:

- All important parts of the child seat should be examined for damages on a regular basis.
- The mechanical parts must function flawlessly.
- It is essential that the child seat does not get jammed between hard parts like the door of the car, seat rail etc. which might cause damage to the seat.
- The child seat must be examined by the manufacturer after e.g. having been dropped or similar situations.

NOTE! When you buy a CYBEX ATON it is recommended to buy a second seat cover. This allows you to clean and dry one whilst using the other one in the seat.

WHAT TO DO AFTER AN ACCIDENT

In an accident the seat can sustain damages which are invisible to the eye. Therefore the seat should be replaced immediately in such cases. If in doubt please contact your retailer or the manufacturer.

CLEANING

It is important to use only an original CYBEX ATON seat cover since the cover is an essential part of the function. You may obtain spare covers at your retailer.

NOTE! Please wash the cover before you use it the first time. Seat covers are machine washable at max. 30°C on delicate cycle. If you wash it at higher temperature, the cover fabric may lose colour. Please wash the cover

separately and never dry it mechanically! Do not dry the cover in direct sunlight! You can clean the plastic parts with a mild detergent and warm water.

WARNING! Please do not use chemical detergents or bleaching agents under any circumstances!

WARNING! The integrated harness system cannot be removed from the baby seat. Do not remove parts of the harness system.

The integrated harness system can be cleaned with a mild detergent and warm water.

REMOVING THE COVER

The cover consists of 5 parts. 1 seat cover, 1 adjustable insert, 2 shoulder pads and 1 buckle pad. To remove the



cover please follow these steps:

- Open the buckle e.
- Remove the shoulder pads d from shoulder belts c.
- Pull the cover over the seat rim.
- Pull the shoulder belts c with the buckle tongues t out of the cover parts.
- Pull the buckle e through the seat cover.
- Now you can remove the cover part.

WARNING! The child seat must never be used without the cover.

NOTE! Use CYBEX ATON covers only!

ATTACHING THE SEAT COVERS

In order to put the covers back onto the seat, proceed in the reverse order as shown above.

NOTE! Do not twist the shoulder straps.

DURABILITY OF PRODUCT

Since plastic materials wear out over time, e.g. from exposure to direct sunlight, the product characteristics may vary slightly. As the car seat may be exposed to high temperature differences as well as other unforeseeable forces please follow the instructions below.

- If the car is exposed to direct sunlight for a longer period of time, the child seat must be taken out of the car or covered with a cloth.
- Examine all plastic parts of the seat for any damages or changes to their form or color on a yearly basis.
- If you should notice any changes, you must dispose of the seat. Changes to the fabric – in particular the fading of color – are normal and do not constitute a damage.

DISPOSAL

For environmental reasons we kindly ask our customers to dispose of the beginning (packing) and at the end (seat parts) of the lifetime of the child seat all incidental waste properly. Waste disposal regulations may vary regionally. In order to guarantee a proper disposal of the child seat, please contact your communal waste management or administration of your place of residence. In any case, please take note of the waste disposal regulations of your country.

WARNING! Keep all packing materials away from children. There is a risk of suffocation!

PRODUCT INFORMATION

If you have questions please contact your dealer first. Please collect the following information before:

- Serial number (see sticker).
- Brand name and type of car and the position where the seat is mounted normally.
- Weight (age, size) of child.

For further information about our products please visit WWW.CYBEX-ONLINE.COM

WARRANTY

The following warranty applies solely in the country where this product was initially sold by a retailer to a customer. The warranty covers all manufacturing and material defects, existing and appearing, at the date of purchase or appearing within a term of three (3) years from the date of purchase from the retailer who initially sold the product to a consumer (manufacturer's warranty). In the event that a manufacturing or material defect should appear, we will – at our own discretion – either repair the product free of charge or replace it with a new product. To obtain such warranty it is required to take or ship the product to the retailer, who initially sold this product to a customer and to submit an original proof of purchase (sales receipt or invoice) that contains the date of purchase, the name of the retailer and the type designation of this product.

This warranty shall not apply in the event that this product is taken or shipped to the manufacturer or any other person other than the retailer who initially sold this product to a consumer. Please check the product with respect to completeness and manufacturing or material defects immediately at the date of purchase or, in the event that the product was purchased in distance selling, immediately after receipt. In case of a defect stop using the product and take or ship it immediately to the retailer who initially sold it. In a warranty case the product has to be returned in a clean and complete condition. Prior to contacting the retailer, please read this instruction manual carefully.

This warranty does not cover any damages caused

by misuse, environmental influence (water, fire, road accidents etc.) or normal wear and tear. It does solely apply in the event that the use of the product was always in compliance with the operating instructions, if any and all modifications and services were performed by authorized persons and if original components and accessories were used. This warranty does not exclude, limit or otherwise affect any statutory consumer rights, including claims in tort and claims with respect to a breach of contract, which the buyer may have against the seller or the manufacturer of the product.

CONTACT

CYBEX GmbH

Riedinger Str. 18, 95448 Bayreuth, Germany

Tel.: +49 921 78 511-0,

Fax.: +49 921 78 511- 999

Documents / Resources



[CYBEX CYBEX ATON](#) [pdf] User Guide
CYBEX, ATON

[Manuals+](#),

- [home](#)
- [privacy](#)