



cybex BOUNCER Click
and Fold High Chair



cybex BOUNCER Click and Fold High Chair User Guide

[Home](#) » [CYBEX](#) » cybex BOUNCER Click and Fold High Chair User Guide 

Contents

- [1 cybex BOUNCER Click and Fold High Chair](#)
- [2 Product Specifications](#)
- [3 Product Usage Instructions](#)
- [4 Detailed online user guide](#)
- [5 TOOLS](#)
- [6 SAFETY](#)
- [7 INSTALLATION](#)
- [8 Documents / Resources](#)
 - [8.1 References](#)
- [9 Related Posts](#)



cybex BOUNCER Click and Fold High Chair



Product Specifications

- Brand: BOUNCER
- Model: Lemo Bouncer
- Max Weight Capacity: 9 kg (20 lbs)

Product Usage Instructions

Preparing the Chair

Follow these steps to prepare the bouncer for use:

1. Assemble the chair according to the provided instructions.
2. Ensure all parts are securely attached.

Harness Setup

Properly secure your child with the harness by following these steps:

1. Adjust the harness straps to fit your child snugly.
2. Ensure the harness buckle is securely fastened.
3. Perform a safety check to ensure the harness is correctly= installed.

Bouncer Adjust Backrest

Adjust the backrest of the bouncer for your child's comfort:

1. Find the adjustment mechanism on the chair.

2. Modify the backrest position as needed.

Disassembling

When not in use or for storage purposes, follow these steps to disassemble the bouncer:

1. Detach all parts carefully.
2. Store components in a safe place for future use.

Frequently Asked Questions (FAQ)

Q: What is the maximum weight capacity of the Lemo Bouncer?

A: The Lemo Bouncer has a maximum weight capacity of 9 kg (20 lbs).












Detailed online user guide

WARNING

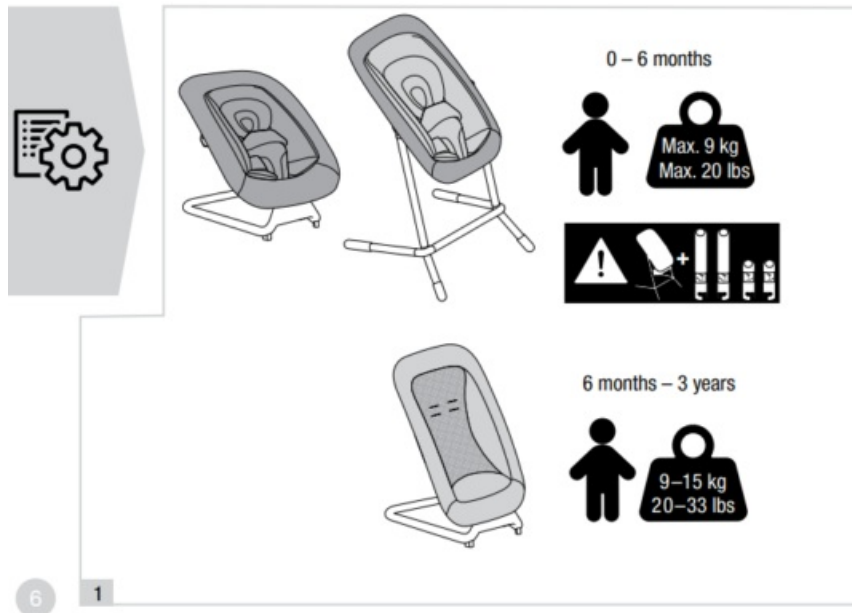
Tutorial video



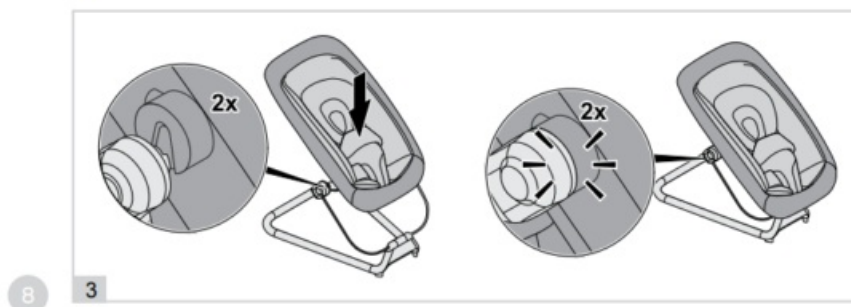
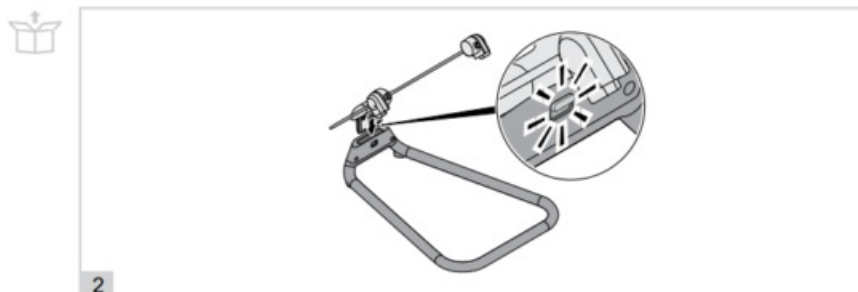
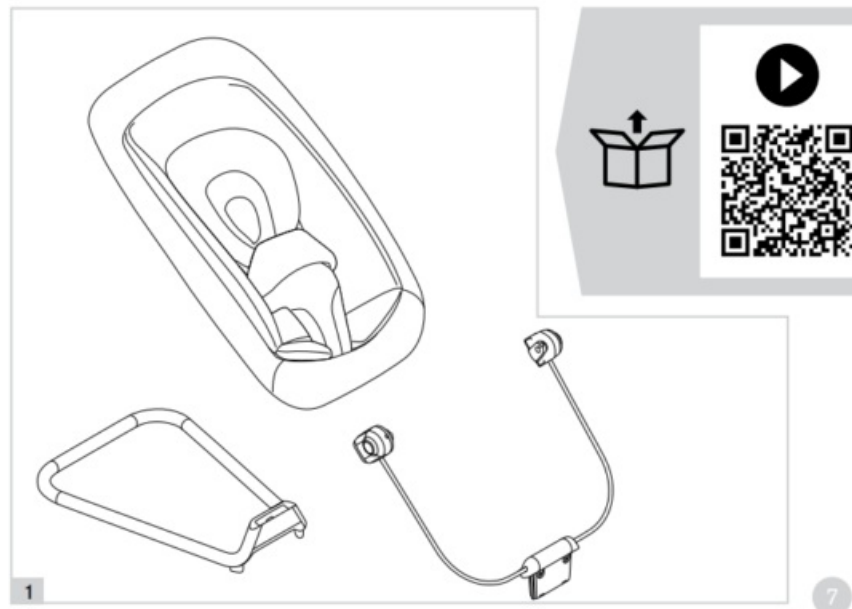
TOOLS

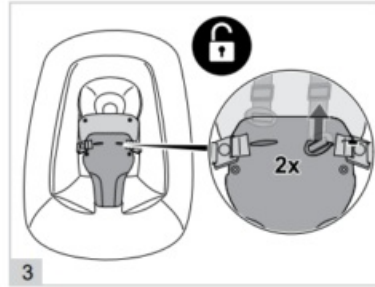
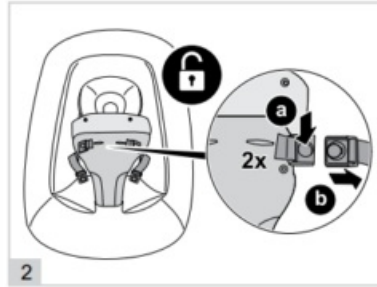
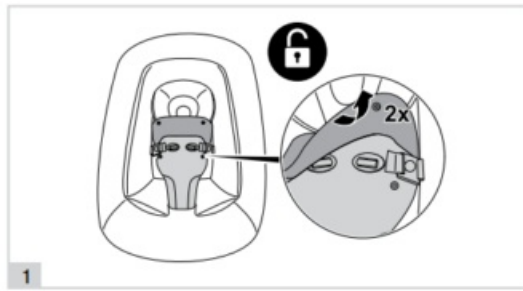
	 = 6		 = 12
	 = 7		 = 13
	 = 9		 = 26

SAFETY



INSTALLATION

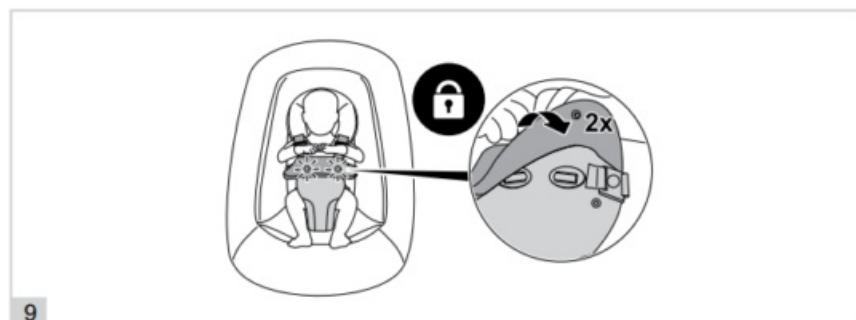
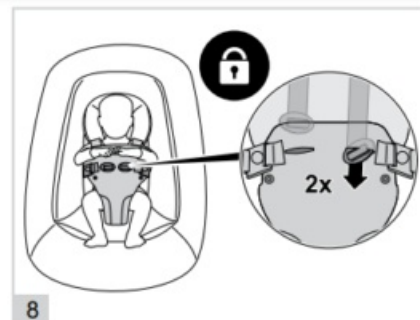
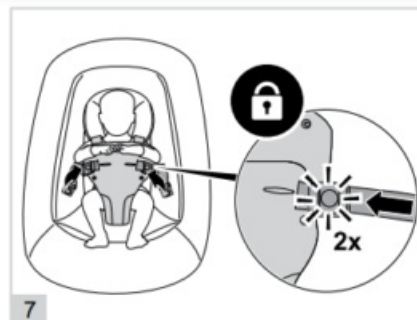
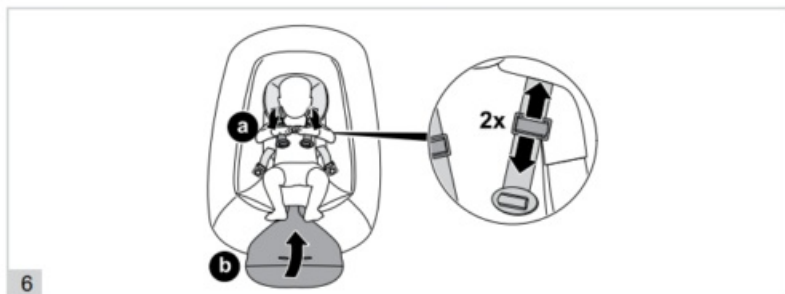




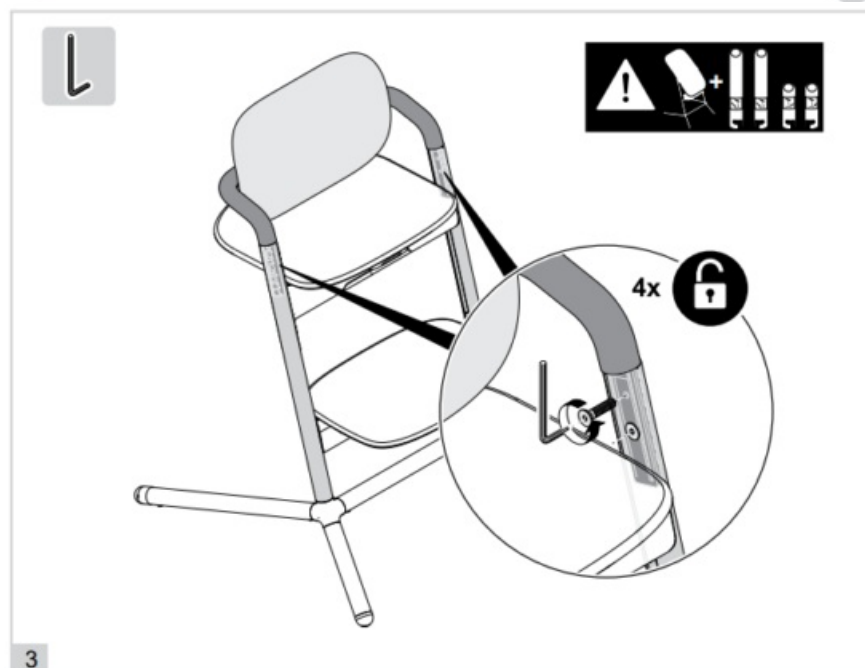
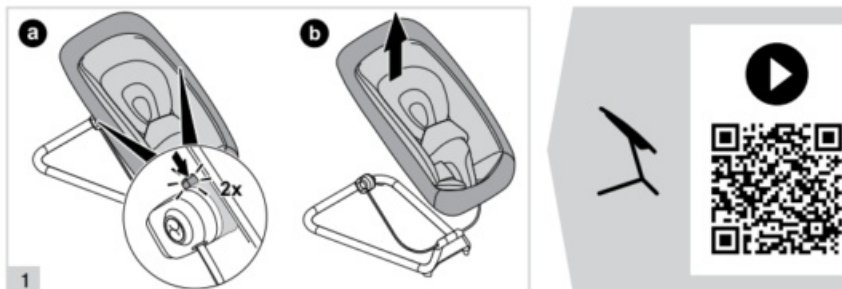
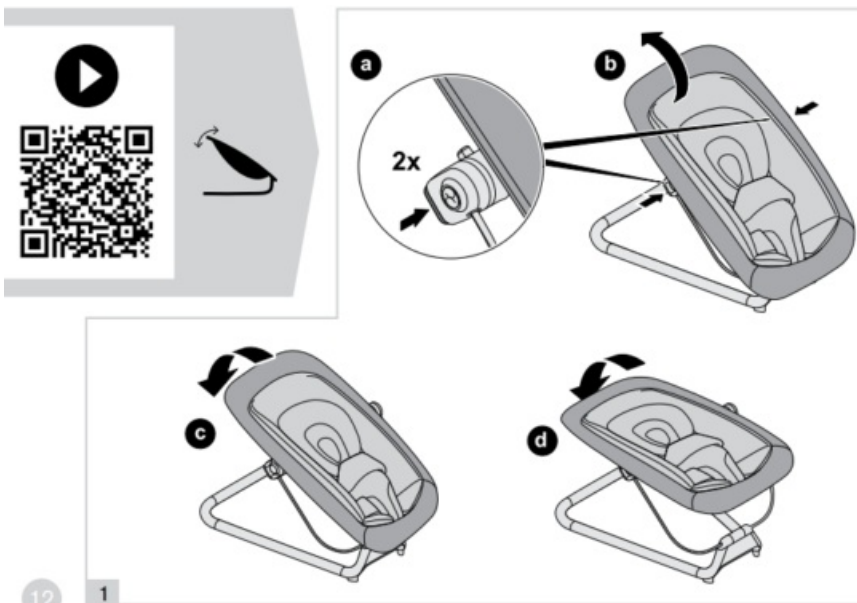
9

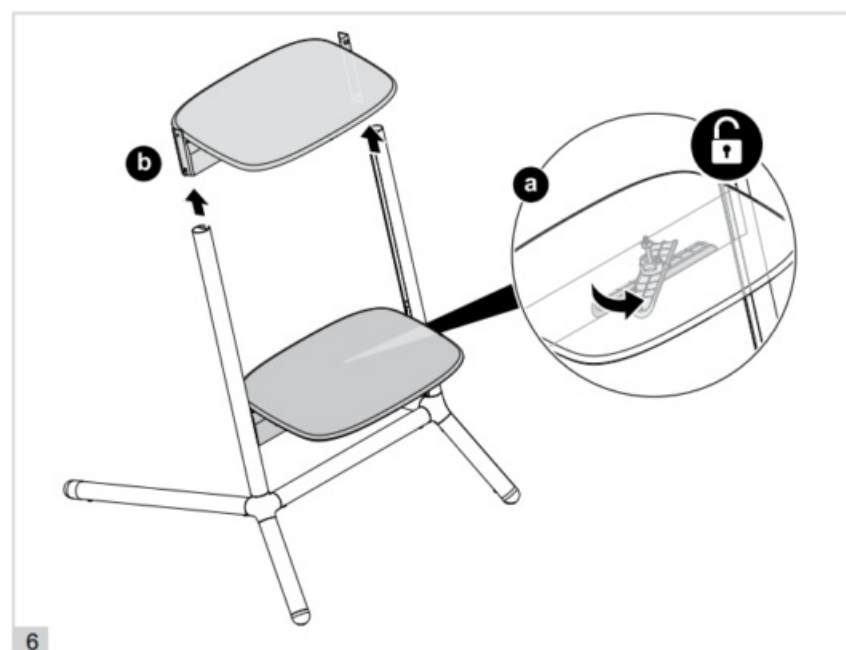
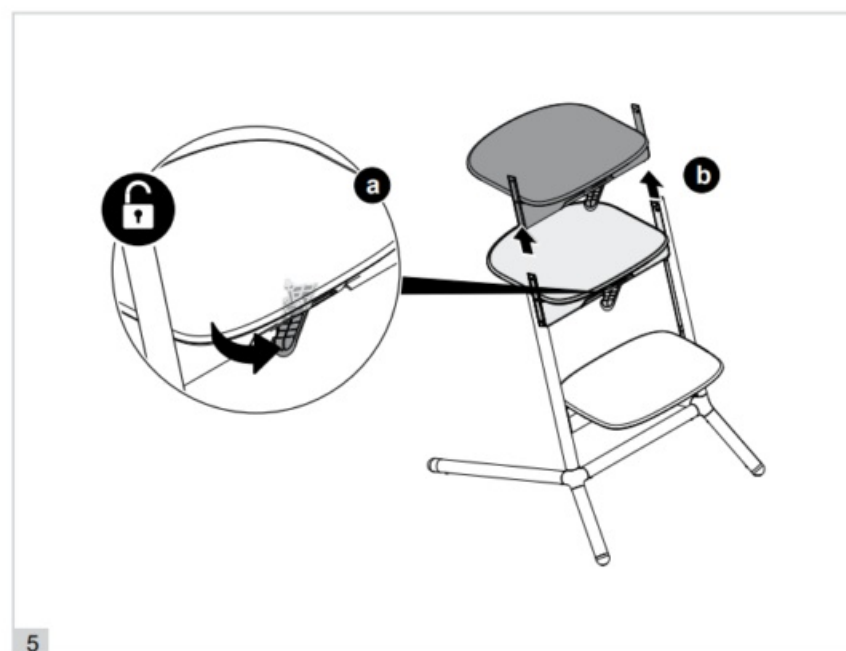
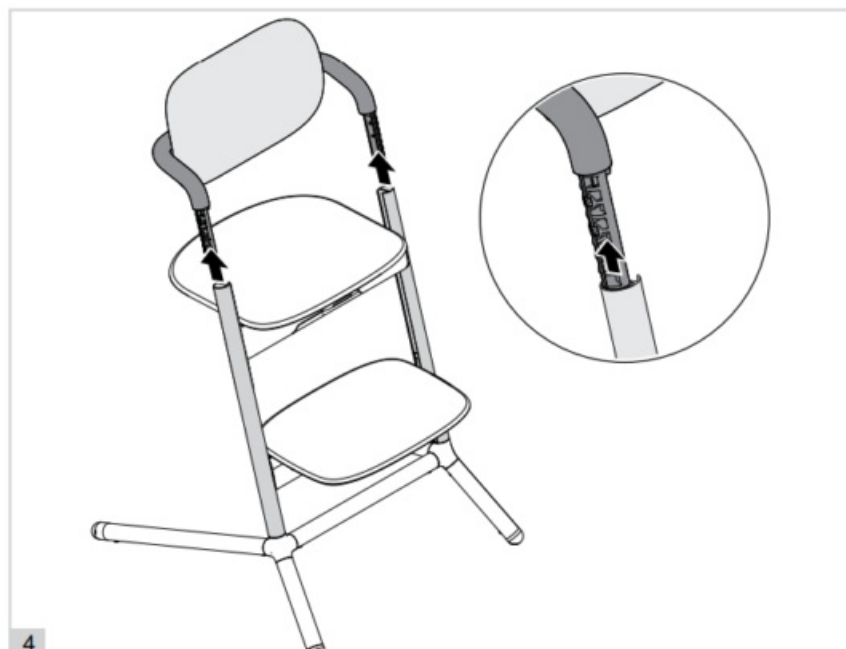


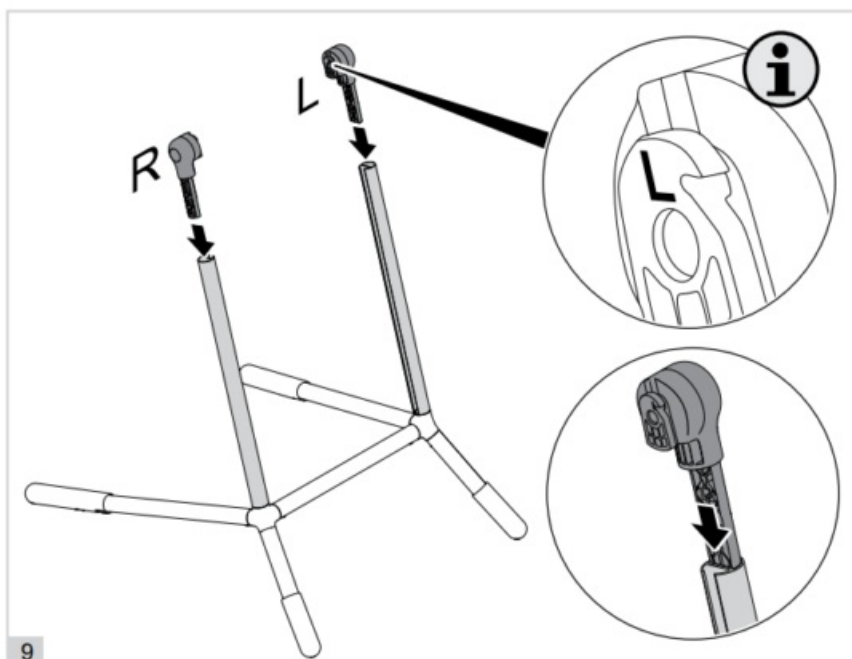
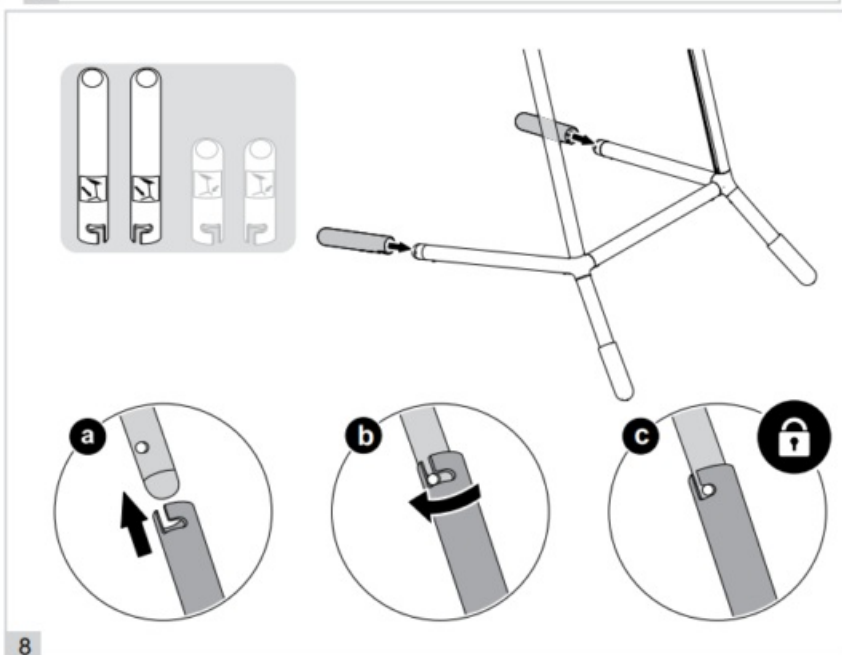
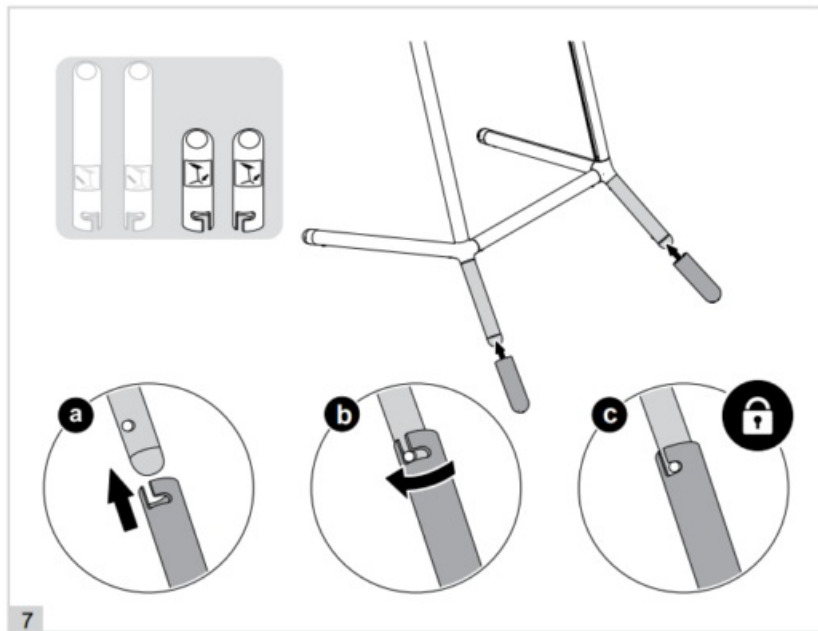
10

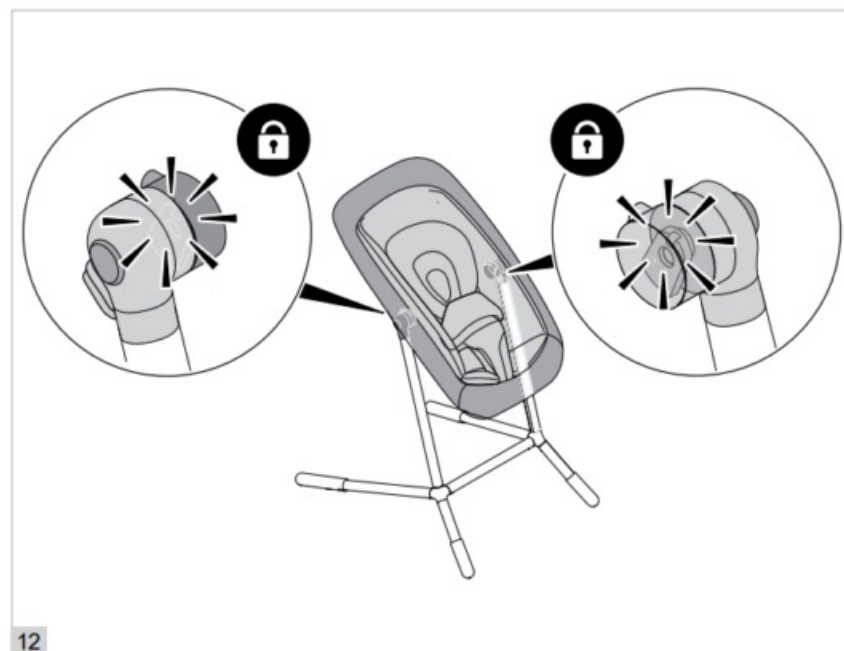
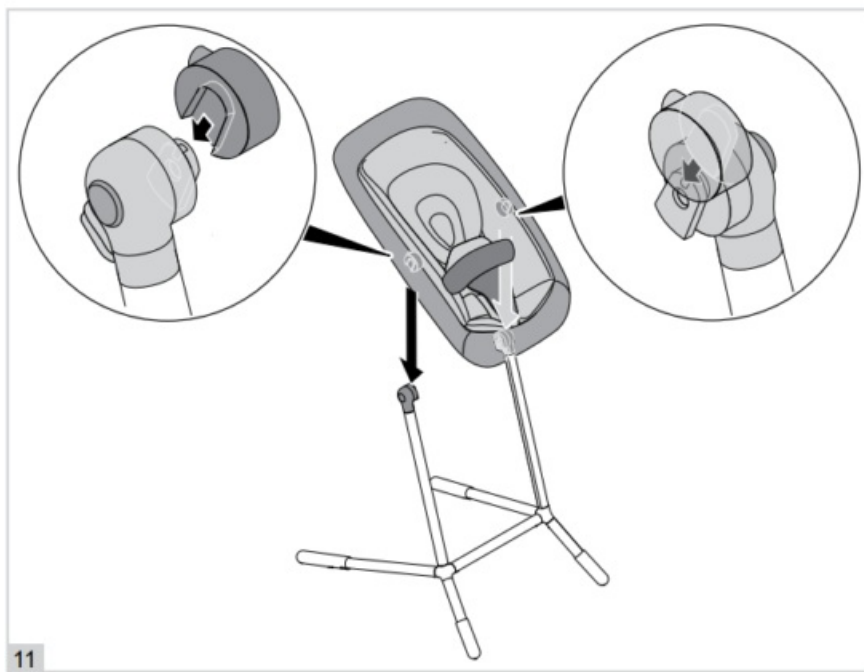


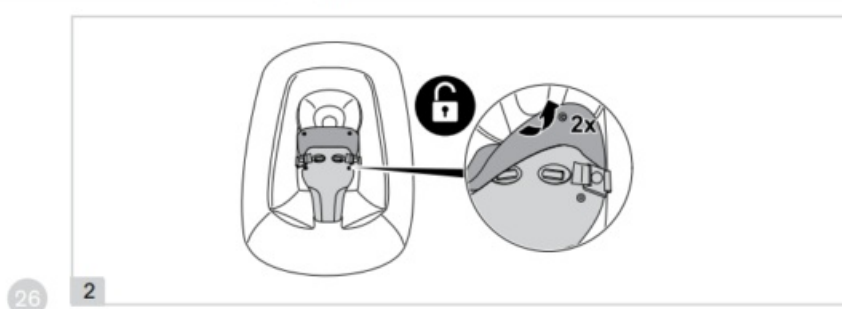
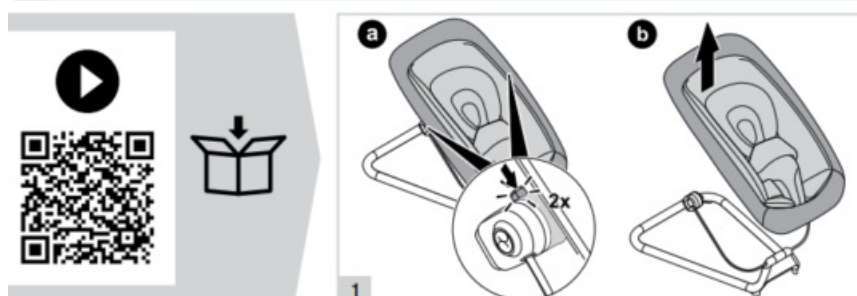
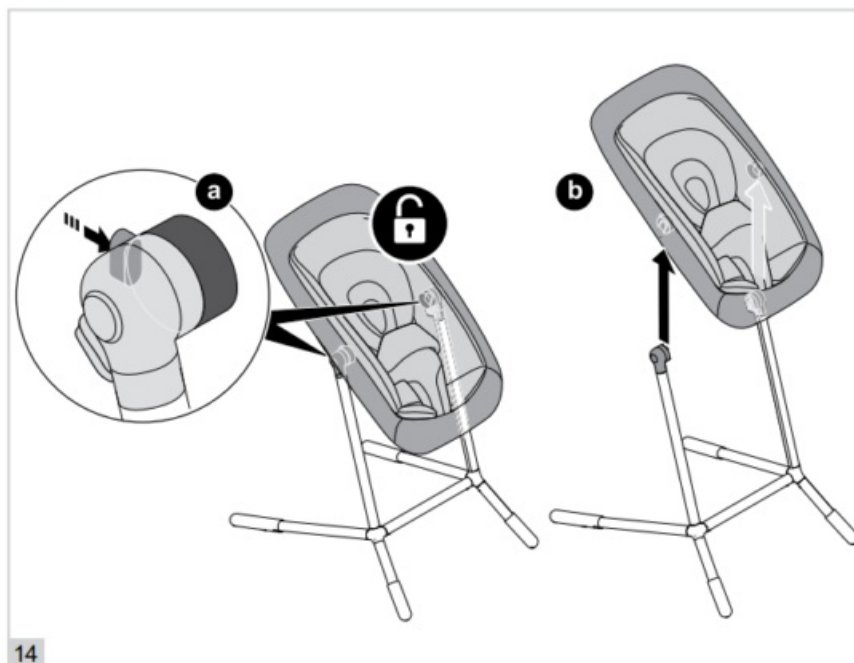
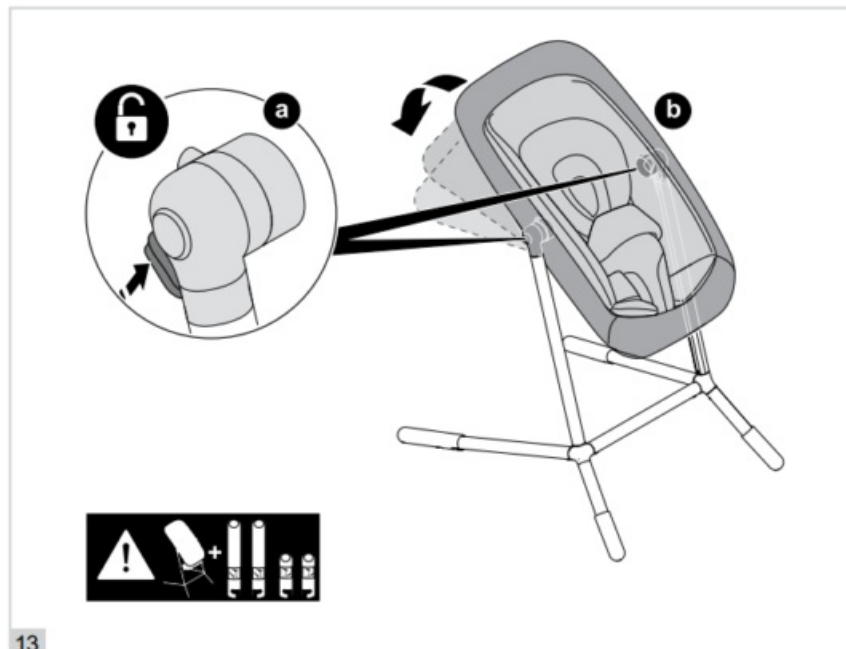
9

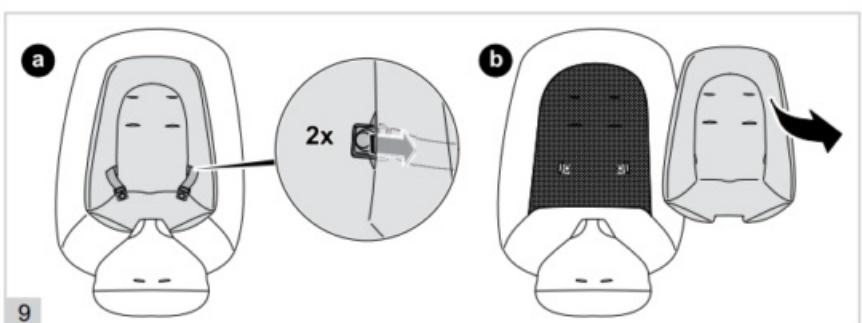
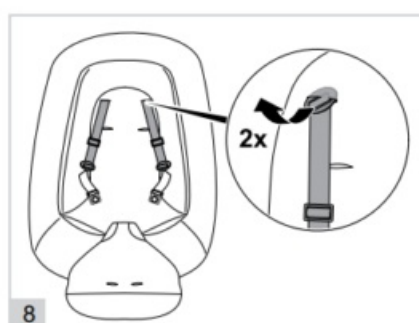
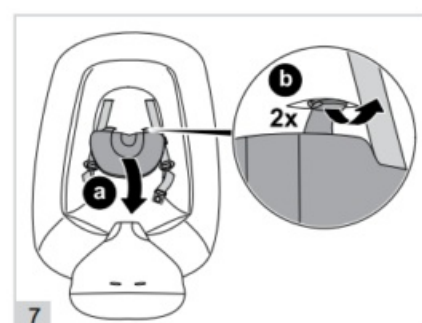
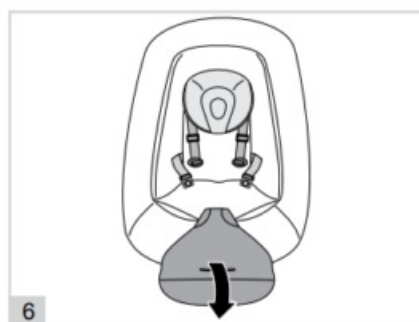
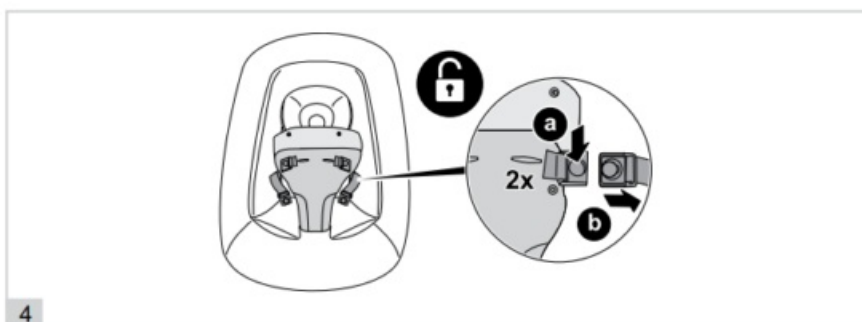
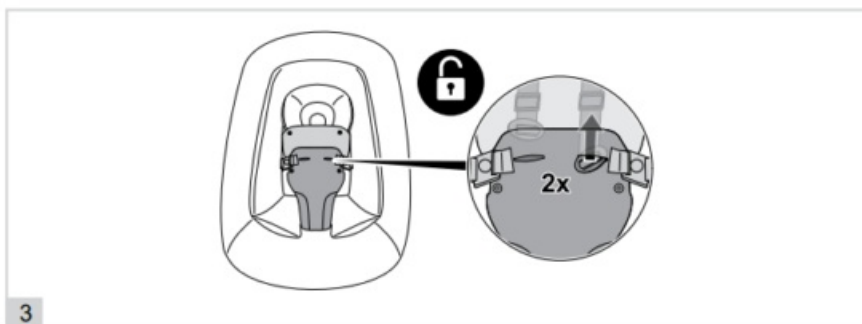


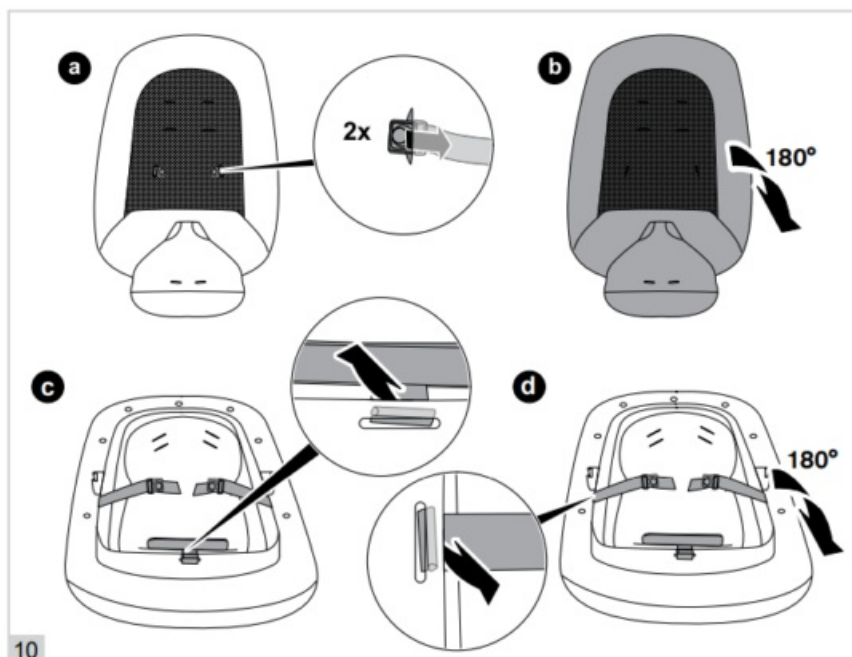




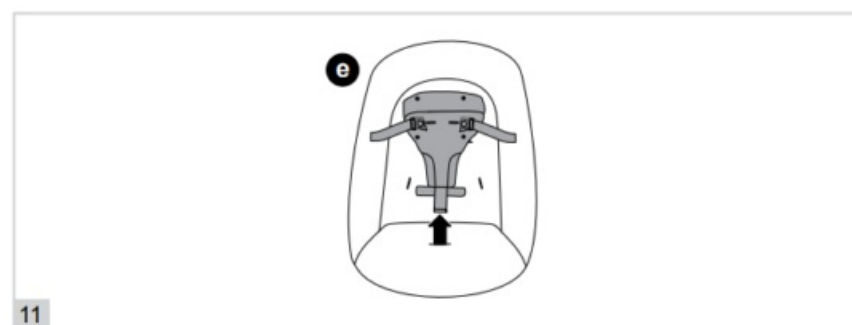




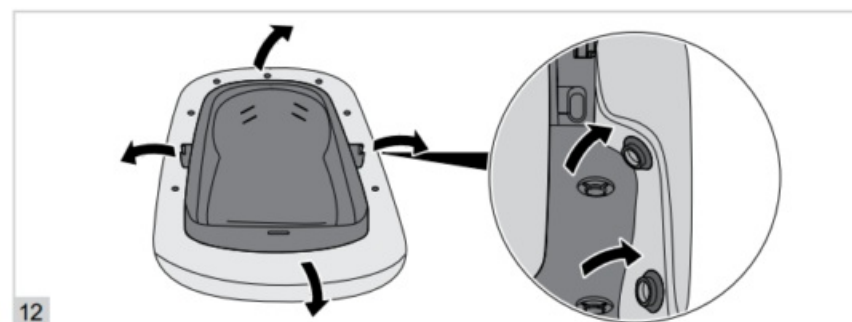




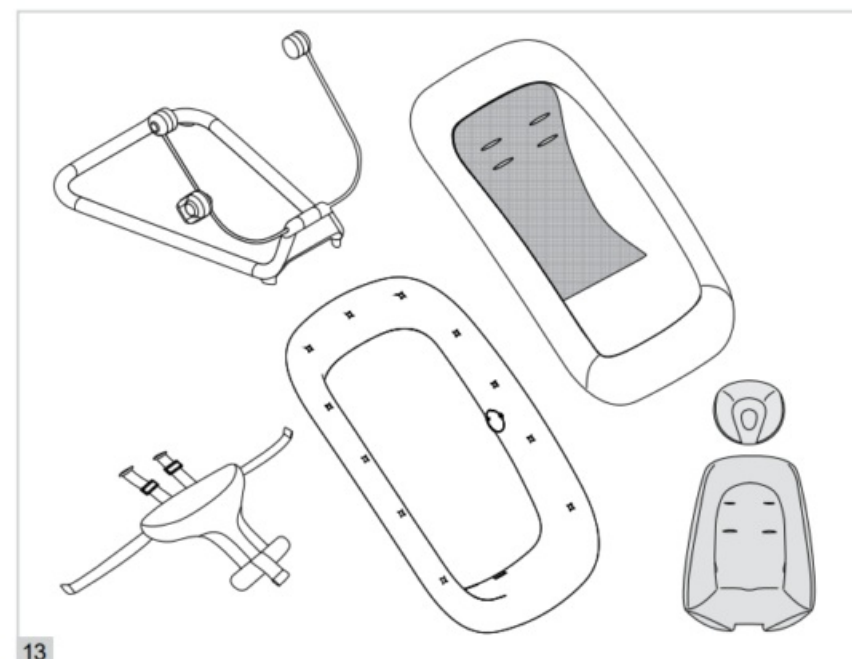
10



11



12




13



CYBEX GmbH

Riedingerstr. 18 | 95448 Bayreuth | Germany+49 (0) 921-78 511-0 | info@cybex-online.com www.cybex-online.com

Documents / Resources

	<p>cybex BOUNCER Click and Fold High Chair [pdf] User Guide</p> <p>Lemo Bouncer, CY_171_8520_H0724, BOUNCER Click and Fold High Chair, BOUNCER, Click and Fold High Chair, Fold High Chair, High Chair, Chair</p>
---	---

References

-  [CYBEX Online | Discover Strollers & Car Seats Online](#)
- [User Manual](#)

Manuals+, Privacy Policy

This website is an independent publication and is neither affiliated with nor endorsed by any of the trademark owners. The "Bluetooth®" word mark and logos are registered trademarks owned by Bluetooth SIG, Inc. The "Wi-Fi®" word mark and logos are registered trademarks owned by the Wi-Fi Alliance. Any use of these marks on this website does not imply any affiliation with or endorsement.