

 **B0424 Click and Fold
Comfort Inlay**



cybex B0424 Click and Fold Comfort Inlay Installation Guide

[Home](#) » [CYBEX](#) » cybex B0424 Click and Fold Comfort Inlay Installation Guide 

Contents

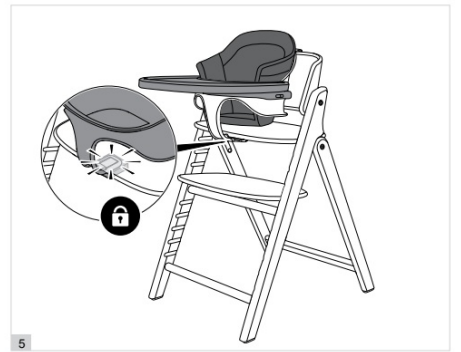
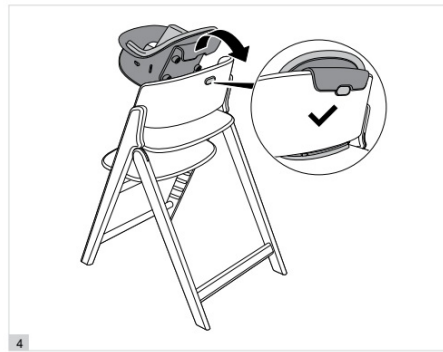
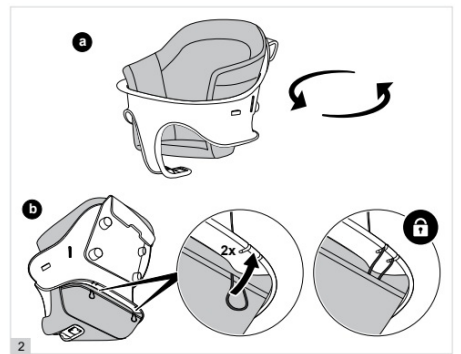
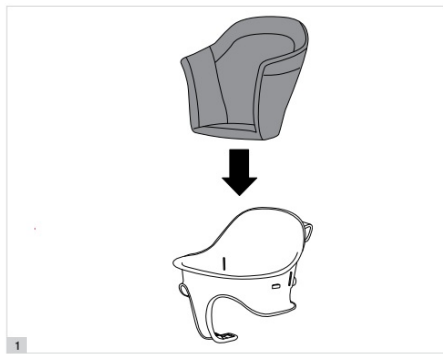
- [1 cybex B0424 Click and Fold Comfort Inlay](#)
- [2 INSTALLATION INSTRUCTION](#)
- [3 Specifications](#)
- [4 Product Usage Instructions](#)
- [5 Frequently Asked Questions \(FAQ\)](#)
- [6 Documents / Resources](#)
 - [6.1 References](#)
- [7 Related Posts](#)

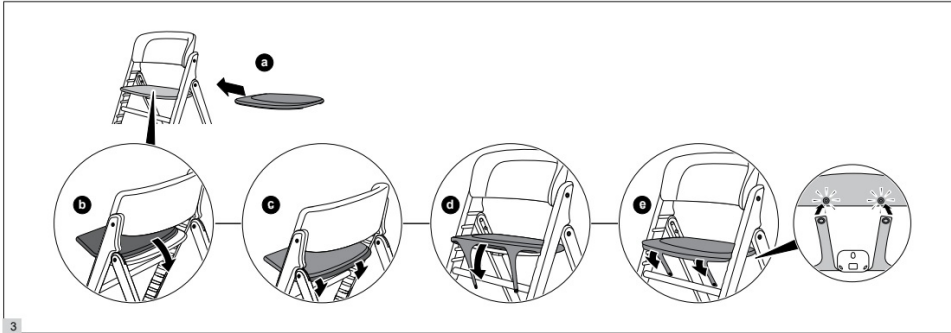
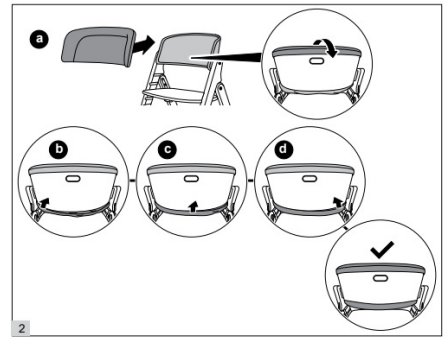
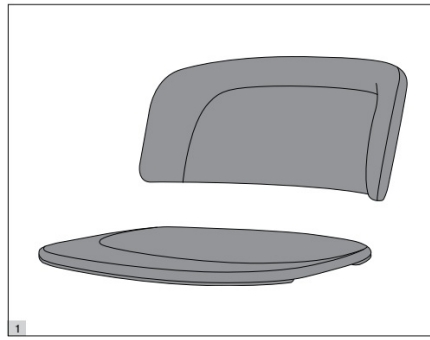
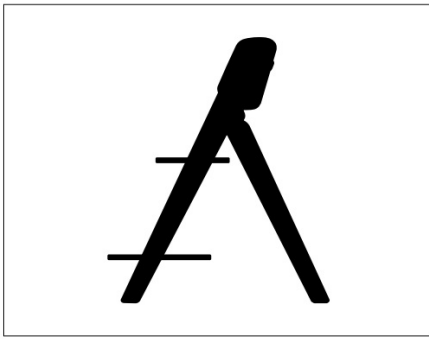


cybex B0424 Click and Fold Comfort Inlay



INSTALLATION INSTRUCTION





Specifications

- **Product Name:** Click & Fold Comfort Inlay
- **Regions Available:** Europe, Asia, Americas

Product Usage Instructions

Unfolding the Comfort Inlay

To use the Click & Fold Comfort Inlay, follow these steps:

1. Locate the designated unfolding mechanism on the product.
2. Gently press or pull the mechanism to unfold the inlay completely.

Placing the Comfort Inlay

After unfolding the inlay, place it on the desired surface ensuring a secure fit.

Folding and Storing

When not in use, fold the inlay back using the folding mechanism for compact storage.

Frequently Asked Questions (FAQ)

Q: Can the Comfort Inlay be washed?

A: Yes, the Comfort Inlay can be washed following the manufacturer's washing instructions provided in the user manual.

Q: Is the Comfort Inlay suitable for all ages?

A: The Comfort Inlay is designed for specific age ranges as mentioned in the product specifications. Ensure to use it within the recommended age limits.

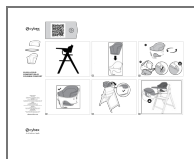
Q: How can I contact customer service for product assistance?

A: Refer to the manufacturer contacts section in the user manual for customer service details specific to your region.

Manufacturer Contacts:

- **USA:** Columbus Trading-Partners USA Inc., 2915 Whitehall Park Drive, Suite 300, Charlotte, NC 28273, Customer Service: 1-[877-242-5676](tel:877-242-5676), info.us@cybex-online.com
- **Canada:** Goodbaby Canada Inc., 2 Robert Speck Parkway, Suite 750 Mississauga, ON L4Z 1H8, Customer Service: 1-[877-242-5676](tel:877-242-5676), info.us@cybex-online.com
- **Australia:** Anstel Brands Pty Ltd, Sunline Drive 36, 3029 Truganina, Victoria, Phone: 03 9131 6545, support@anstel.com.au
- **New Zealand:** Anstel Brands Pty Ltd, Sunline Drive 36, 3029 Truganina, Victoria, Phone: 09 886 0028, support@anstel.com.nz

Documents / Resources



[cybex B0424 Click and Fold Comfort Inlay](#) [pdf] Installation Guide
B0424 Click and Fold Comfort Inlay, B0424, Click and Fold Comfort Inlay, Fold Comfort Inlay, Comfort Inlay, Inlay

References

- [CYBEX Online Shop | Buy Pushchairs & Car Seats Online](#)
- [User Manual](#)

Manuals+, Privacy Policy

This website is an independent publication and is neither affiliated with nor endorsed by any of the trademark owners. The "Bluetooth®" word mark and logos are registered trademarks owned by Bluetooth SIG, Inc. The "Wi-Fi®" word mark and logos are registered trademarks owned by the Wi-Fi Alliance. Any use of these marks on this website does not imply any affiliation with or endorsement.