




CyberView X5-MS Slide Scanner User Manual

[Home](#) » [CyberView](#) » CyberView X5-MS Slide Scanner User Manual 

CYBERVIEW

Power Slide X Plus
User's Manual

Contents

- 1 X5-MS Slide Scanner
- 2 GETTING STARTED
- 3 QUICK INSTALLATION GUIDE
- 4 GENERAL INFORMATION
- 5 HOW TO SCAN SLIDES
- 6 CONFIGURING SCAN SETTINGS
- 7 USER INTERFACE
- 8 SCAN DPI SETTINGS – Additional Information
- 9 HASSLE FREE SCAN TIPS
- 10 TECHNICAL SUPPORT
- 11 Documents / Resources
 - 11.1 References

X5-MS Slide Scanner



FEDERAL COMMUNICATIONS COMMISSION (FCC) STATEMENT

This Equipment has been tested and found to comply with the limits for a class B digital device, pursuant to Part 15 of the FCC rules. These limits are designed to provide reasonable protection against harmful interference in a residential installation. This equipment generates uses and can radiate radio frequency energy and, if not installed and used in accordance with the instructions, may cause harmful interference to radio communications. However, there is no guarantee that interference will not occur in a particular installation. If this equipment does cause harmful interference to radio or television reception, which can be determined by turning the equipment off and on, the user is encouraged to try to correct the interference by one or more of the following measures:

- Re-orient or relocate the receiving antenna.
- Increase the separation between the equipment and receiver.
- Connect the equipment into an outlet on a circuit different from which the receiver is connected to.
- Consult the dealer or an experienced radio/TV technician for help.

Warning:

Use only shielded signal cables to connect I/O devices to this equipment. You are cautioned that changes or modifications not expressly approved by the party responsible for compliance could void your authority to operate the equipment.

GETTING STARTED

Check the package content before getting started.

For Quick Installation please refer to Quick Installation Guide. (Ref. Pg. 6)

Important! Save the original box, receipt and packing material for future shipping needs.

Package Contents

Slide Scanner

50 Slide Magazine

Power Adapter (comes in 2 pcs)

USB Cable

Warning!

Using any other power adapter or slide trays may severely damage the scanner and will void the product warranty.

GENERAL GUIDANCE:

Connect the scanner directly using the USB cable provided.

Do not use a hub or USB extension cable. Only use the USB ports on the rear of desktop computers.

If there are any other devices (multifunction device, printers, scanners, webcam) connected to the computer through USB, disconnect or power them off.

A minimum of 2GB RAM (Win/Mac) is required.

Operating Ambient Temperature Range 50° to 104°F (10° to 40°C)

Note: Do not turn on the scanner unless it is within this range. If the scanner has been stored or transported outside of this range, allow it to return to within this range before turning it on.

Operating Ambient Humidity Range 15% to 76%

Relative humidity (non-condensing)

Note: If the scanner is stored or to be transported in cold temperature and then brought into a warm / humid environment condensation may occur

This device is designed solely for private use and is not intended for commercial use.

QUICK INSTALLATION GUIDE

INSTALLING – Cyber View X5- for PC (Windows) User

a. Download the driver/Software to operate the scanner from this link [SCANNER SOFTWARE](#)

Click link or copy and paste: <https://www.scanace.com/sd.php?pid=&cid=&pcid=21>

Once downloaded go to the folder where you saved the download and double click the file to install follow the onscreen prompts to complete the installation process.

Cyber View X5- for MAC

a. Download the driver/Software to operate the scanner from this link [SCANNER SOFTWARE](#)

Click link or copy and paste: <https://www.scanace.com/sd.php?pid=&cid=&pcid=21>

Once downloaded go to the folder where you saved the download and double click the file to install follow the onscreen prompts to complete the installation process.

NOTE: Apple systems may display a warning that the software was from unidentified developer because it was not downloaded from the Apple Store, once you run the installer, if you see this warning, next click on the Apple icon – System Preferences – Security & Privacy – Look for the message Cyber View attempted to run, Select Open Anyways



NOTE: Make sure the scanner is NOT connected to the computer during the Cyber View driver installation.

b. Restart computer once the installation process is complete.

Installing the Hardware

a. Connect the slide scanner to a power source. The hardware drivers automatically loaded with the Cyber View X5 installation process.

1. Locate the power switch on the lower left side of the scanner. Make sure the scanner is TURNED OFF.



Circle in OFF / Line in ON

2. Plug the AC adapter into an AC power source FIRST before plugging it into the scanner.

3. Attach the USB cable to the computer using the standard USB adapter end. Attach the USB adapter end of the cable to back panel of the scanner.

3a. When using USB 3.0, Mini Port (USB-C) it may be necessary to use a hub if you experience connectivity issues i.e. Scanner hangs on calibrating please wait or if it freezes mid-scan, please see this [document for more information](#)

b. Ensure the scanner does NOT have a slide magazine loaded, turn the scanner ON.

The calibration cycle on the scanner will start automatically and will take several minutes to complete. A green light will flash while the calibration is in progress.

The slide transport arm will move in and out of the scanner.

MAKE SURE THERE IS ENOUGH ROOM IN FRONT OF THE SCANNER FOR THE SLIDE TRANSPORT ARM TO EXTEND FULLY; DO NOT PUSH THE ARM BACK DURING CALIBRATION.

GENERAL INFORMATION

ALL Trays: Load slides with the SHINY side facing the right side of the tray, this will result in a backwards scanned image, but due to the hardware design this is necessary to obtain the best scan quality. Images can be flipped using 3rd party image editing software

Supported Slide Trays:

PIE Dark gray tray (bundled), the aftermarket Braun PAXIMAT Magazine 50 (Gray- for Glassless Slides up to 2mm Thick – MFR #15062)

CS Magazine (European) for CS/CS2-mounted slides (European design) 50 slide maximum version ONLY)

NO OTHER BRANDS OF TRAYS OR CAROUSELS SUPPORTED

Glass slides that are attached to glass frames may cause complications due to the hard edges and thickness and cannot be batch scanned, no slides with mounts that are thicker than 3mm can be scanned.

METAL SLIDES: Cardboard slides mounted into metal frames, these not supported, they MUST be un-mounted from the metal frames

Loading slide(s) into the magazine(s)

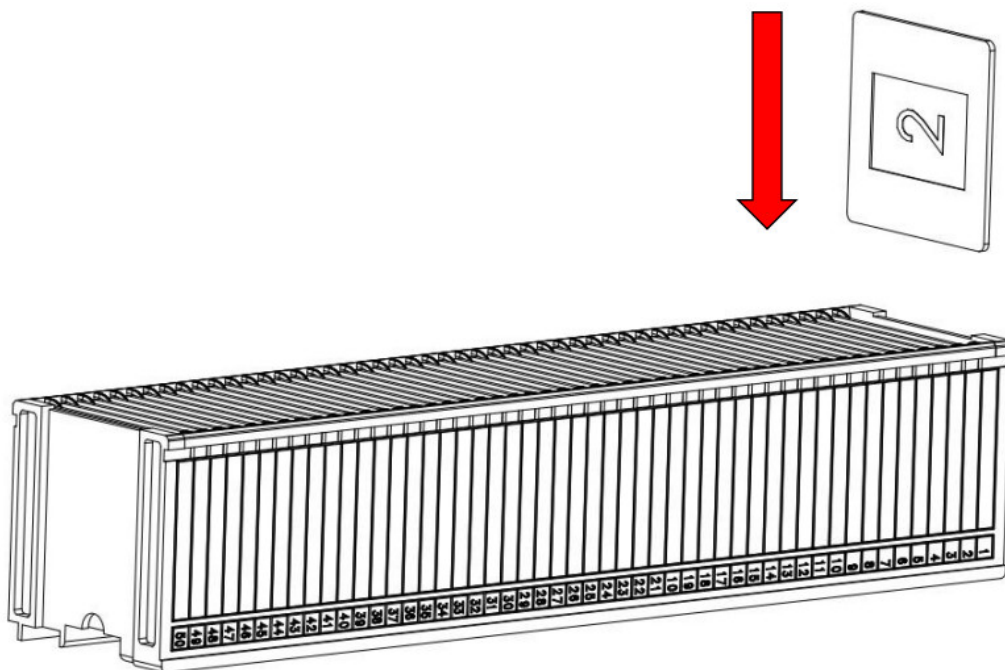
Gray Magazine (Bundled tray) or aftermarket Paxamate Magazine (gray)

a. Locate the numbering sequence text on the top of the slide magazine indicating the slide order. The numbers should be facing up and starting from the left.

b. Hold the slide right side up, facing forward so the image is NOT reversed. Rotate the slide as illustrated below (180 deg) and Insert each slide, one at a time, into the magazine slots. Essentially they will be inserted upside down and backwards, they will require flipping in an image editing program

PIE & Braun Paximat Magazines

#2 on the slides in this drawing represents the emulsion side of the slide film, this faces the #50 in the tray This method of insertion will result in backward image scans due to the mechanical design of the unit, they will need to be flipped using an image editing program back to the proper orientation

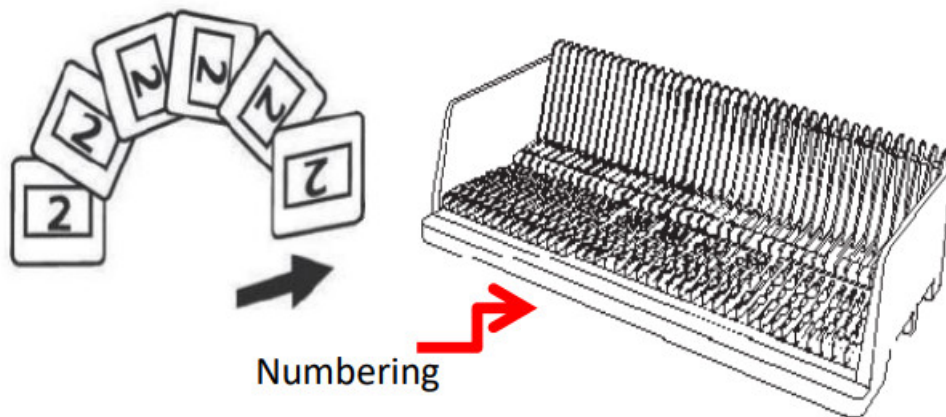


WARNING: Load slides into the magazine properly and make sure the slide mounts are in good condition. Improperly inserted slides or slides with distorted/damaged slide mounts may cause the scanner to jam and potentially damage both the slide and the scanner.

Loading slide(s) into aftermarket magazines

CS Magazine (European 50 slides ONLY)

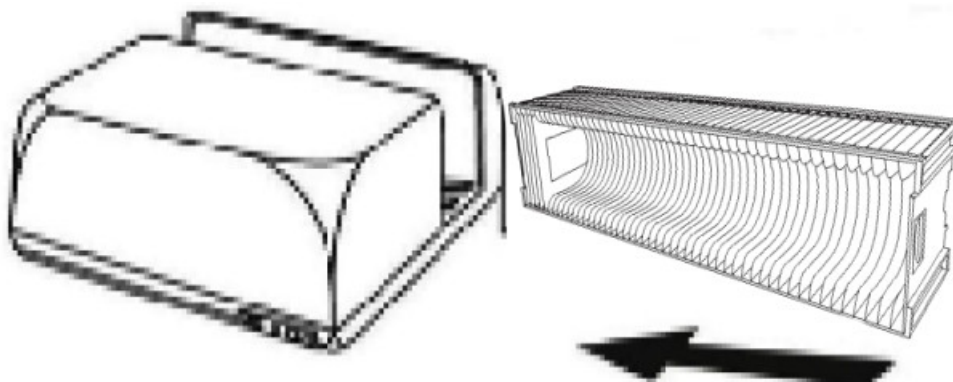
- Locate the numbering sequence text on the CS slide magazine indicating the slide order. The numbers should be facing up and starting from the left.
- Hold the slide right side up, facing forward so the image is NOT reversed. Rotate the slide as illustrated and Insert each slide, one at a time, into the magazine



NOTE: Orientation of scanner in these diagrams is viewed from the back of the unit. Take note that the magazine slide opening also faces towards the back of the scanner for correct orientation when loading into the scanner.

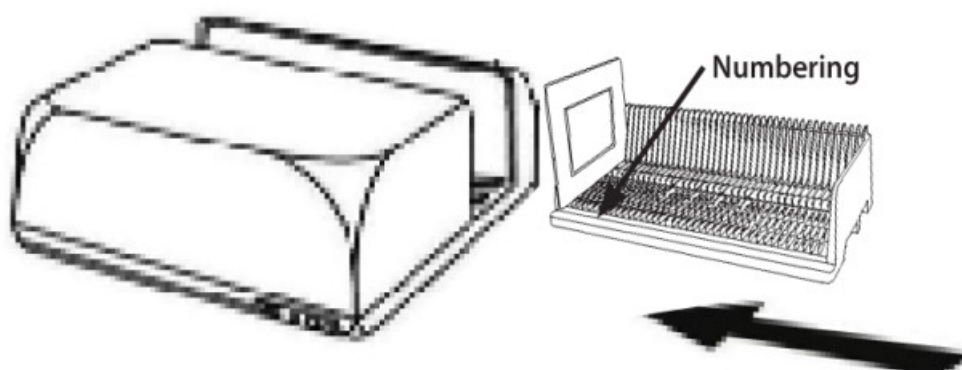
Inserting the trays – Bundled & Braun Paxamate Magazines

Slide order numbers printed on top of magazine the large opening you load the slides into faces the back of the device., This tray needs to be level otherwise it will not insert and appear to be blocked by a small black tab on the bottom of the tray area, if it hits this the tray is not level, it needs to be guided in straight and touch the “Slide Transport” Tappet scanning arm



CS Magazine (European 50 slides ONLY)

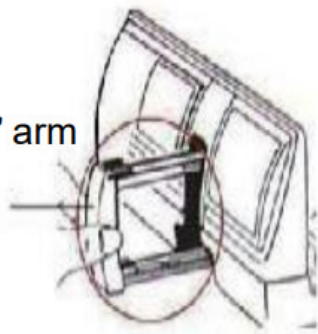
Slide order numbers printed on magazine facing towards the back of the scanner.



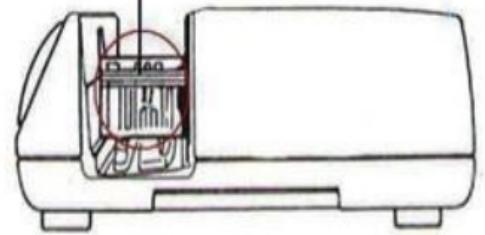
- Place the slide magazine into the scanner from the left side until it touches the slide transport arm and the

magazine “clicks” into place.


Slide Transport “Tappet” arm



Slide Tray holder area



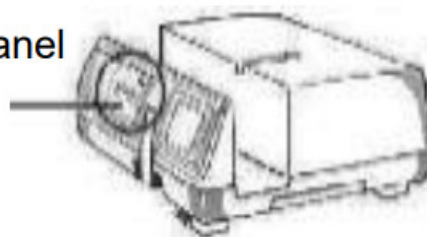
Additional hardware features....

Manual Front Control Panel – Push buttons on the front of the scanner 

a. You can advance or reverse the slide tray by pressing the navigation buttons or scan manually using the scan button to perform one button scanning, Cyber View X must be open to use this button.


NOTE: When installing your new scanner onto a Windows system that already has another USB Flatbed scanner or All-in-one Scan/Copier/Printer device installed, it may be necessary for you to power off or even disconnect or the other scanner from the USB port for the Film scanner to work properly,

Manual Control Panel



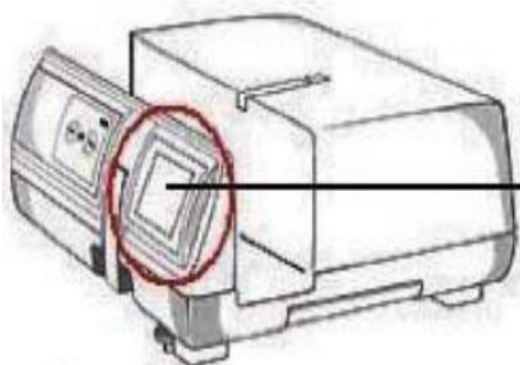
One Button Scan (PC ONLY)

1. Open the Cyber View X application (Ref. page 16 to acquire the Cyber View software)
2. Configure Scan Settings (see Page 17)

Configure the scan settings: Select the Scan to directory, file format (TIF or JPG) Magic Touch/Auto Color etc., once configured, Press the scanner button () to begin scanning.

NOTE: If you do not open CyberView FIRST, the scan button will not function.

c. Slide Viewer – Backlit slide viewer (Not scanning display) The scanner has a built in mini light panel which allows the slides to be manually previewed with a backlight before inserting into the tray for scanning. Insert the slide into the slide viewer for previewing. The scanner has to be switched on. Gently press down on the top of the slide to engage the back light for viewing the slide.



Mini light table **VIEWING Panel** does not display prescanned/scanned image

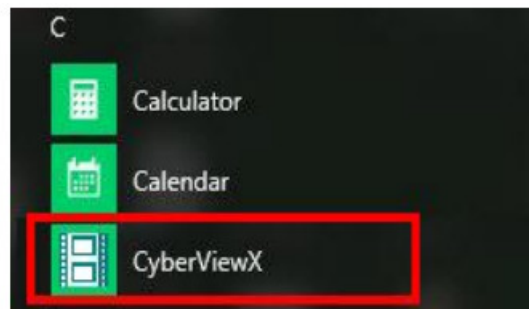


HOW TO SCAN SLIDES

STEP 1 – Acquire Driver

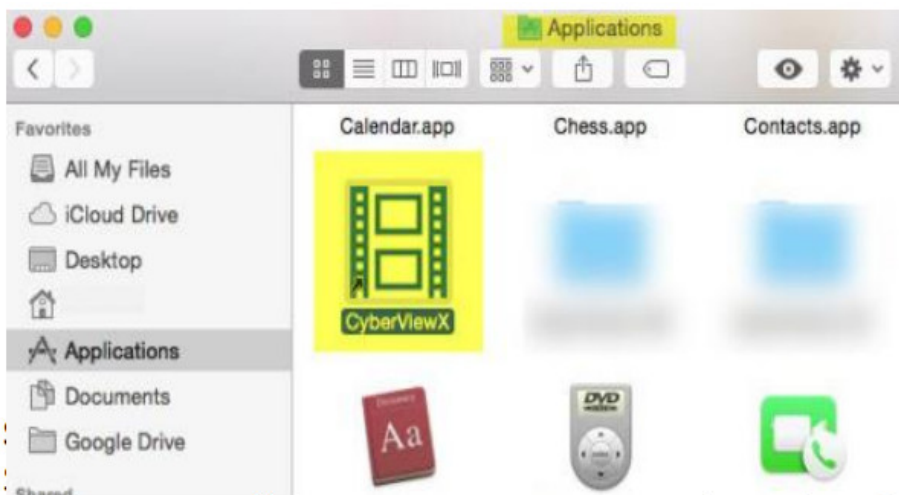
(For PC Users)

Open Cyber View from the desktop icon Alternatively Start button Scroll to the letter C category look for Cyber View X – Start – All Programs – Cyber ViewX



(For MAC Users)

Open Macintosh Hard drive – Applications – Cyber View



mounted B &W negatives (Black and White). tive (mounted negatives) or

STEP 3 – Optional Prescan

Select the “Prescind Current Frame” to rescan the slide currently loaded into the scanner or “Prescan...” to prescan slide or slides at specific positions in the magazine.

Pre-Scanning should be used to manually adjust color/crop area, exposure settings etc. for each slide before doing the final scan. It's possible to set different settings for each slide to be scanned.

Please note: With older cardboard mounts the optional Pre-Scan can put a lot of wear and tear on already decaying slide mounts, pre-scan is ONLY required if you plan to pre-edit all or some of the images manually before final scanning, otherwise use the available automatic correction features to do it for you, and skip prescinding altogether

STEP 4 – Set Scan Settings

a. Resolution (Scan dpi)

The default scanning resolution is 1000dpi, additional resolution options are listed below.

Notice: Higher scanning resolutions result in greater scanning time and hard disk space requirements.

Examples of resolution to use:

Here are the minimum resolutions to display slide shows on an HDTV with high quality 1080p TV = 1500 dpi minimum to achieve a 1920 x 1279 pixel image, 4K TV = 2840 minimum to achieve a 3840 x 2558 pixel image, 4K TV resolution is 3840 x 2160

8K TV = 5700 minimum to achieve a 7730 x 5113 pixel image, 8K TV Resolution is 7680x 4320 (for additional resolution information regarding printing see page 30)

b. Color Depth

The Film Scanner color depth is 48 bit true color

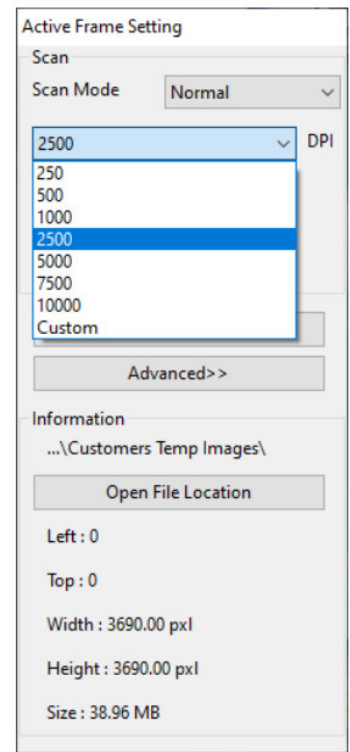
The scanning software has the capability of selecting 8 bit color mode or 16 bit color mode when scanning, This will produce 24 or 48 bit color images, 8 bits or 16 bits per Red, Green and Blue color channels

Example:

8 bit mode = 8 Red, 8 Green, and 8 Blue for a total of 24 bit color 16 bit mode = 16 Red, 16 Green, and 16 Blue for a total of 48 bit color

Note: Color image file size of different resolutions and color depths:


Scanning Resolution	Color Depth (by RGB Channel)	Color Mode	File Size TIFF (no compression)
300dpi	8 bit	24-bit	~370Kb
600dpi	8 bit	24-bit	~1.4MB
1800dpi	8 bit	24-bit	~12.9MB
3600dpi	8 bit	24-bit	~52MB
5000dpi	8 bit	24-bit	~100MB
7200dpi	8 bit	24-bit	~208MB
10000dpi	8 bit	24-bit	~402MB

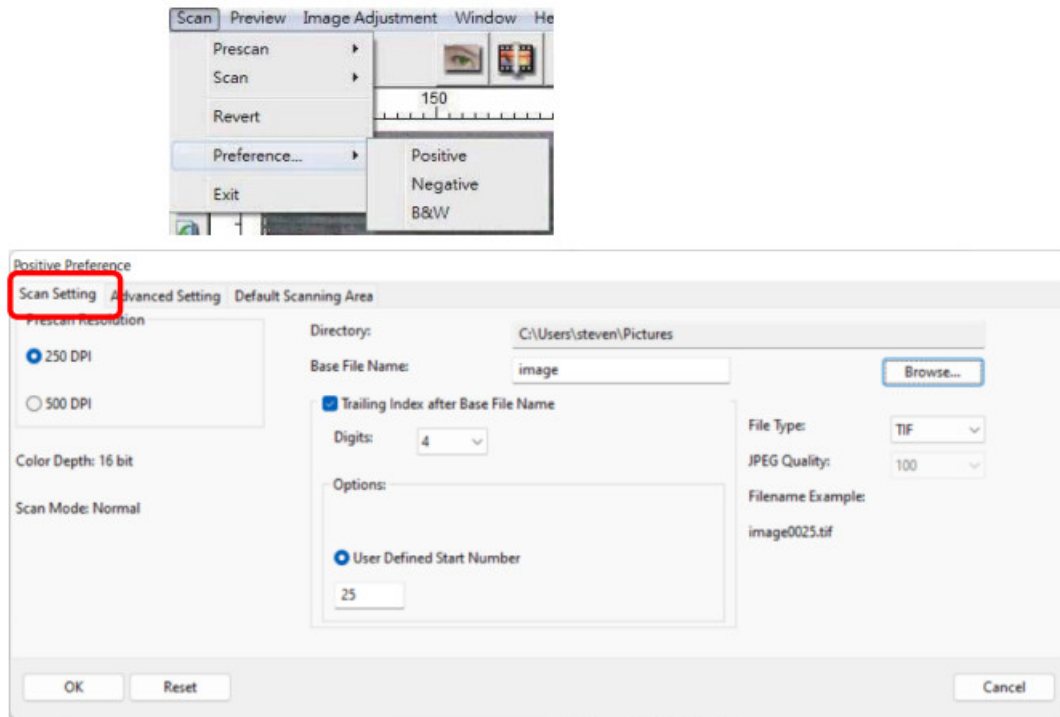


Scan Mode – Normal: Produces a scan in jpeg format

Quality Mode– produces a non-compressed, “loss-less” TIFF image.

STEP 5 – Setting Scan Preferences (for reference explanation of these features see page 19-21)

Select Scan – Preference – Positive – Scan Setting or click the Cog wheel too icon on the toolbar  To enter the Scan Settings area (Negative and B&W options are only for negative strips that have been cut and mounted into slide holders)



“Prescan Resolution” – Default pre-scan resolution, if you select the optional prescan to pre-edit slides before scanning the higher the pre-scan resolution the larger sample you have to work with for pre-editing before the final scan.

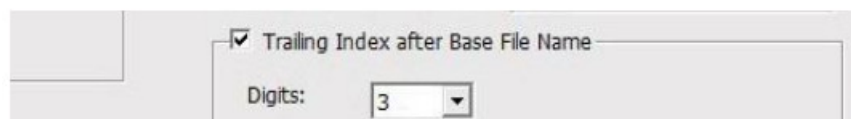
(Please note with older cardboard mounts the optional Pre-Scan can put a lot of wear and tear on already decaying slide mounts, pre-scan is ONLY required if you plan to pre-edit all or some of the images manually before final scanning.)

“Color Depth” – 8 bit (24bit) or 16 bit (48bit) Default color depth

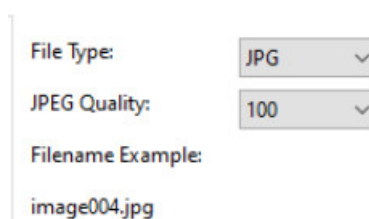
“Scan Mode” – Default scan mode while scanning. Quality mode is for x-rays, medical slides etc., normal is for standard slide images

CONFIGURING SCAN SETTINGS

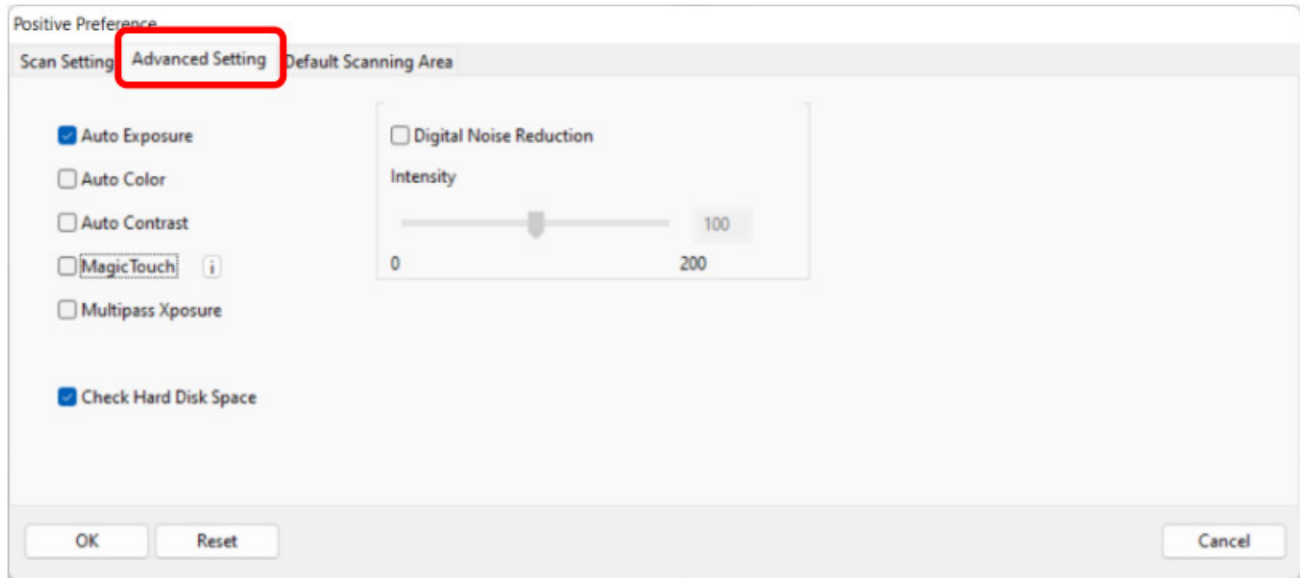
1. Select Browse and choose the designated folder to save the scanned image to
2. Enter the file name, Making sure not to use any unusual characters (Example: \ / & # = etc.
3. Trailing Index after Base File Name Digits X: Defines the length of the file name and numbering sequence up to 6 digits Example Digits 3 (Default) results in a file name image 001 by selecting digits 1-6 your filename will change accordingly image 000001



4. Options – User Defined Start Number: Enter a specific start number, better for archiving and keeping track of your own sequential scan numbers
5. Choose the file type, “TIF” or “JPG”. (TIF= un-compressed or JPG = Compressed – Choose image quality for JPG. (20-100) 100 offers the least amount of compression, best quality, JPG only outputs to an 8bit formatted image even when scanned using 16bit mode



Advanced Settings



Magic Touch Is a powerful dust and scratch removal technology that does away with the hassle of learning complex and tedious software techniques. Being hardware-based, it works seamlessly with the scanning process to ensure the best possible results when bringing images into the computer.

Dust, scratches and other flaws are intelligently detected and eliminated, restoring the image to its original beauty. Scanning with Magic Touch requires longer scanning times, the feature is turned off by default.

Auto Color takes the guesswork out of the scanning process to streamline the workflow and achieve the best results. Proprietary color enhancement technology is applied to scanned images to provide the most accurate color adjustment, resulting in vibrant images with optimal brightness, contrast and saturation.

Auto Exposure – Attempts to find the correct exposure to get the widest range of whites and blacks while putting the middle grays at around the middle of the data range.

Auto Balance – Using the image histogram to balance RGB channels. It estimates images' color cast and adjust the images accordingly

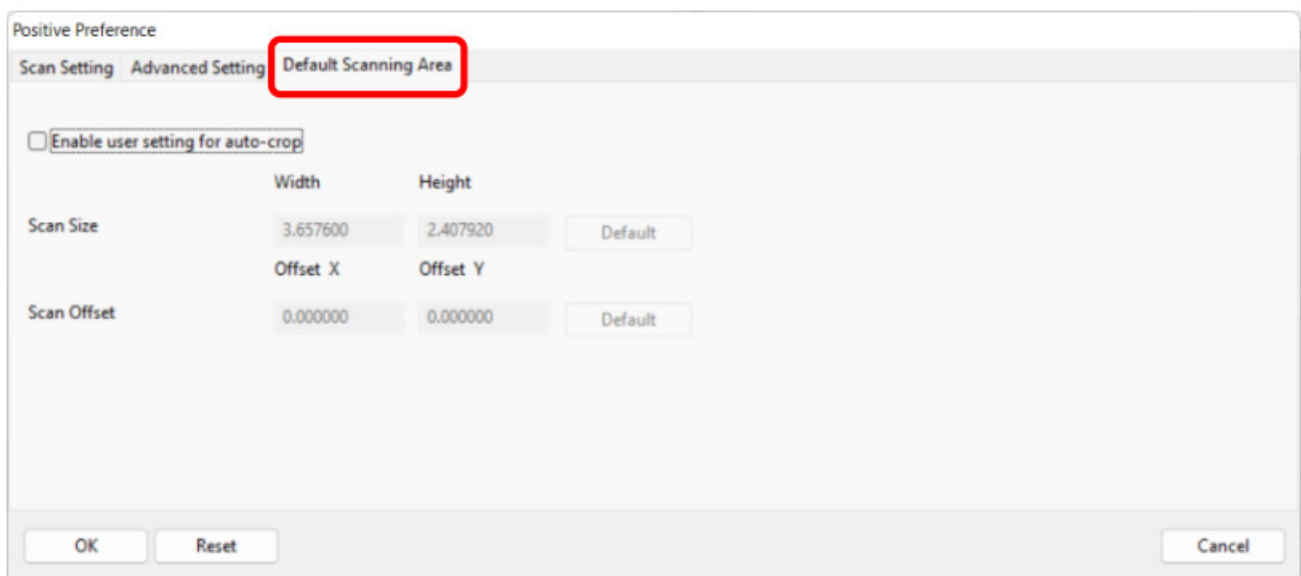
Auto Contrast – The scanner software analyzes the data and automatically adjusts the Setting for the White and Black Points.

Digital Noise Reduction – Applies a filter, reducing the film grain.

Check Hard Disk Space – Checks save to disk for space to determine if the scan to location has enough space for scanning

Default Scanning Area

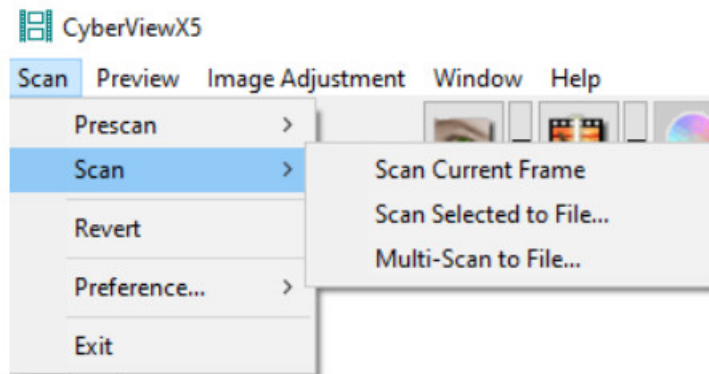
Adjust the scanning size as well as adjust the “Scan Offset” setting to move the image position of slide.



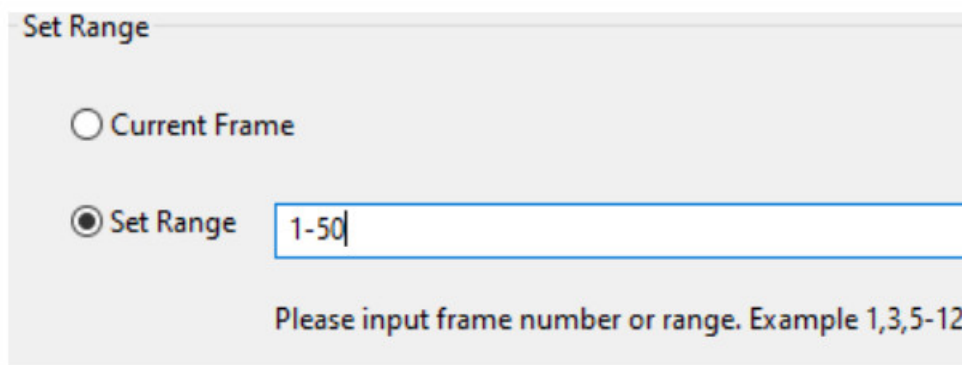
STEP 6 – Scan

To Scan a Single slide – Choose “Scan Current Frame” to scan the slide loaded into the scanner or “Multi-Scan...”

to input the number of slides to be scanned based on their location in the magazine.



1. Scan Current Frame > Scan the current slide, slide already loaded into the scan area using the Forward button in the software or on the front of the unit
2. Scan Selected to File > Scan the selected slide(s) to a specified path. (Pre-scanning required)
3. Multi-Scan to File... > Scan slide(s) numbers and/or range. Set this for 1-50 slides, if you have less slides in the tray, count how many then enter 1-? Of the number of slides currently in the tray, Example 10, then enter 1-10

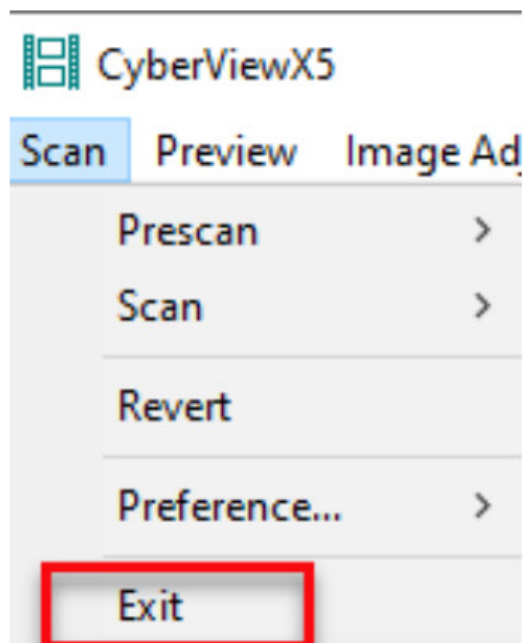


STEP 7 – Exit

All scanned images will be saved to the directory location set previously, the factory default locations are:

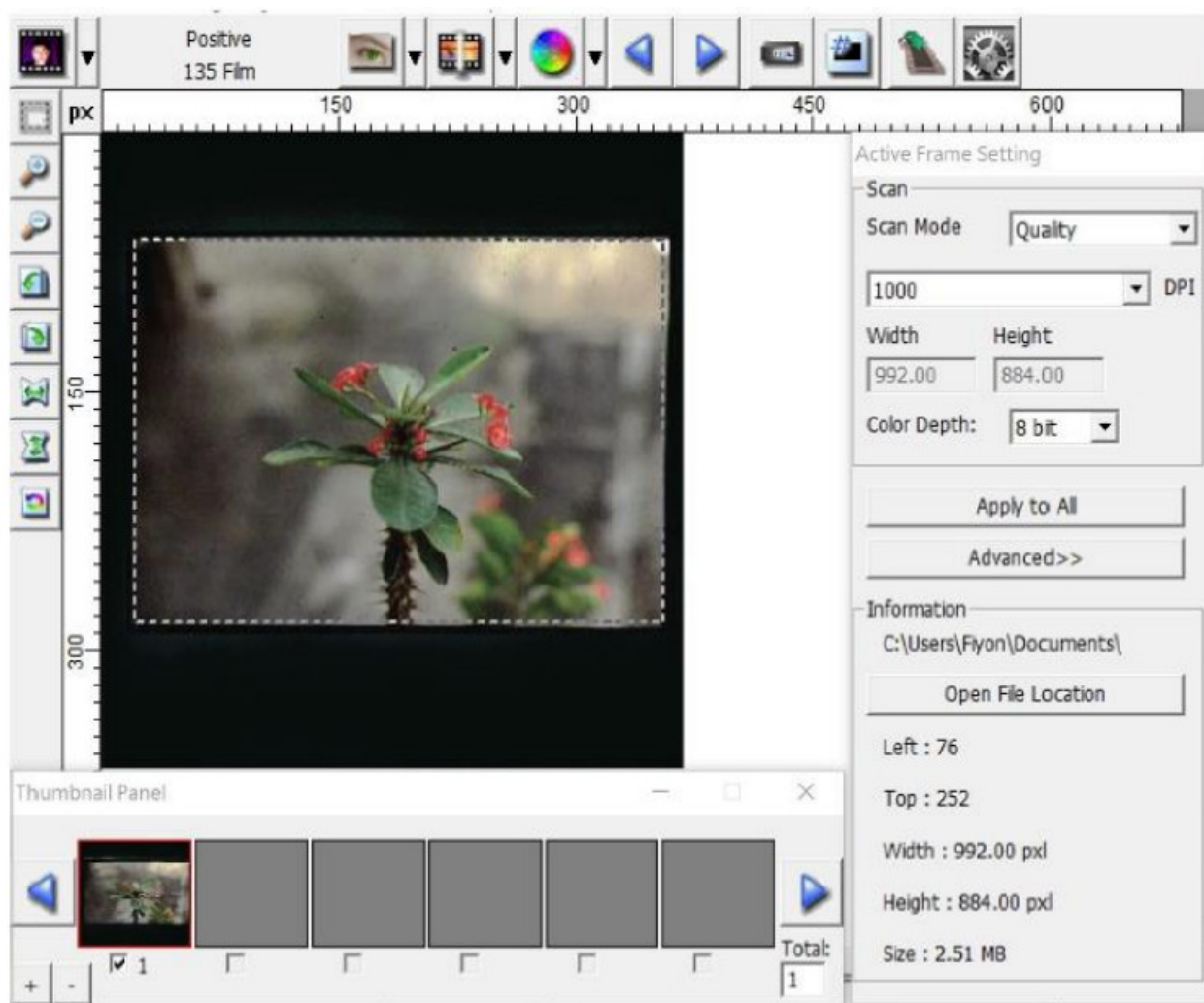
Windows: C:\Users\[YOUR NAME]\Pictures;

MAC: Mac HD\Users\[YOUR NAME] Select "Scan > Exit" to close the software. Scanned image files can be open/edited with any image editing software.

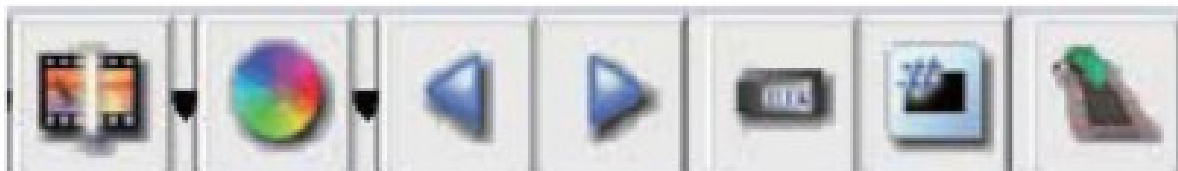


USER INTERFACE

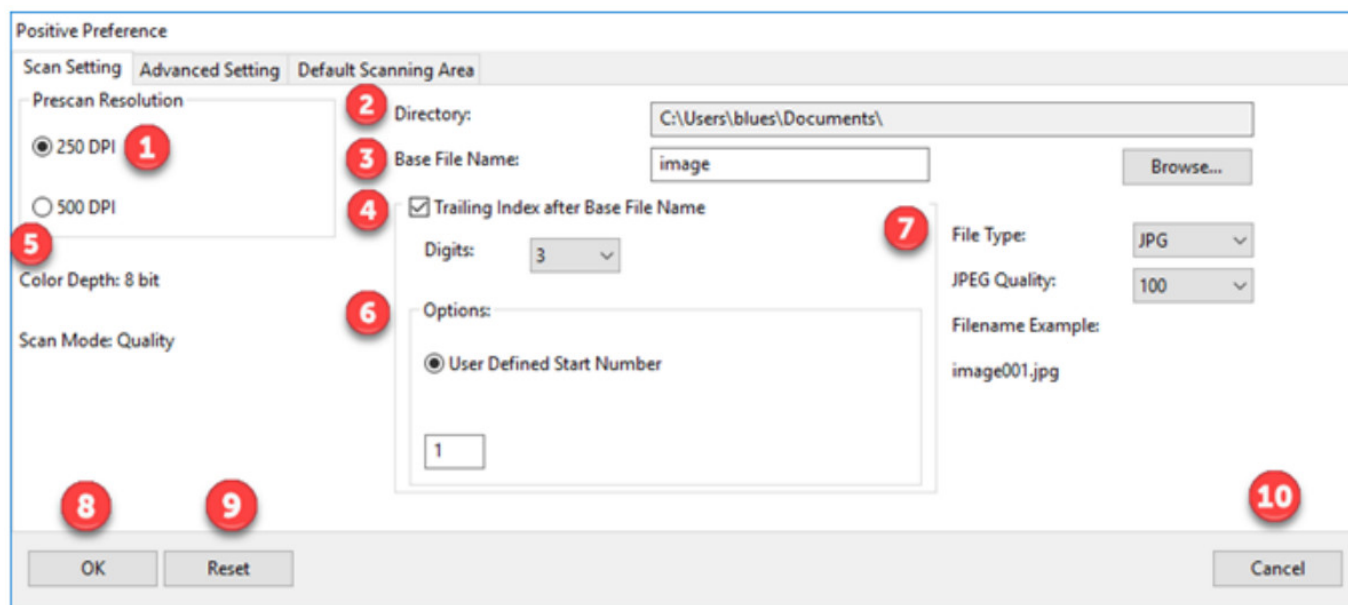
I. Main Window Area



Menu Commands – Preview



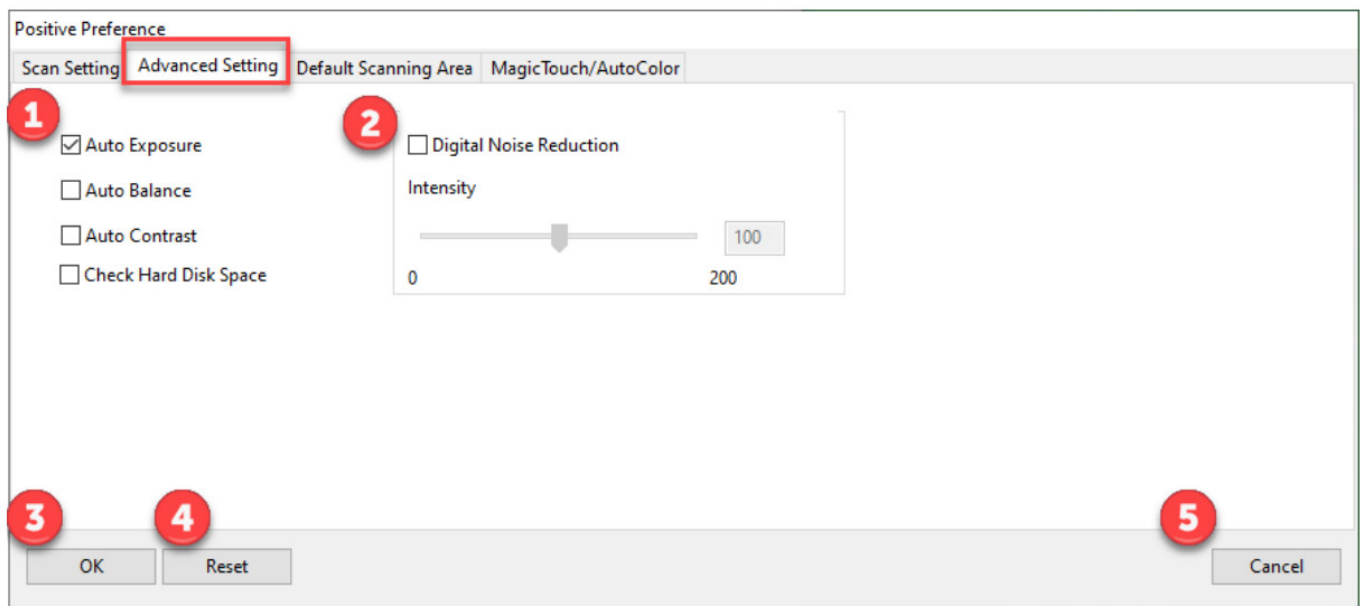
	1. Zoom In: Magnify image.
	2. Zoom Out: Reduce image.
	3. Rotate 90 Left: Turn the image 90° counter clockwise.
	4. Rotate 90 Right: Turn the image 90° clockwise.
	5. Fib Horizontal: Flip the image horizontally.
	6. Flip Vertical: Flip the image vertically.
	7. Revert: Discard all modifications and restores the image back to the original state in preview windows.



1. Rescan Resolution: use this when rescanning only, the 500 dpi setting produces a larger rescan view when in full screen mode
2. Directory: Select where the files are saved to, Documents is the default setting, to change select Browse and choose a different location
3. Base File Name: This is the file name applied to every image which will then have a number after it, image is the default
4. Trailing Index after Base File Name: Tis is the number length, digits 3 default file name example image001, you

can select 1-6 digits for the number length

5. Color Depth: These can be configured in the Active Frame settings window 8 bit is 8 bits per RGB channel = 24 bit color mode, 16 bit is 16 bits per color channel = 48 bit color modes can Mode: Normal for standard photographic images, Quality for high definition images such as x-rays, Quality mode results in a slower scan speed
6. Options: User Defined Start Number: Allows for more custom numbering of the files
7. File Type: Users can choose TIFF, JPG, or DNG.
8. OK: Saves the settings applied and closes this window
9. Reset: Resets the software to ALL Factory Defaults
10. Cancel: Closes this window and no settings will be saved



1. Auto Exposure: Automatically adjusts the image exposure, on by default
Auto Color: Corrects image colors when activated
Auto Contrast: Adjusts image contrast when enabled
Magic Touch: Removes dust and scratches when enabled
2. Digital Noise Reduction: This reduces digital film grain on higher speed films, do not use on 100 aa or slower as it will cause image degradation
3. OK: Saves settings and returns to main interface
4. Reset: Restores factory defaults on ALL Settings
5. Cancel: Closes settings and returns to main interface without saving changes

Positive Preference

Scan Setting Advanced Setting **Default Scanning Area** MagicTouch/AutoColor

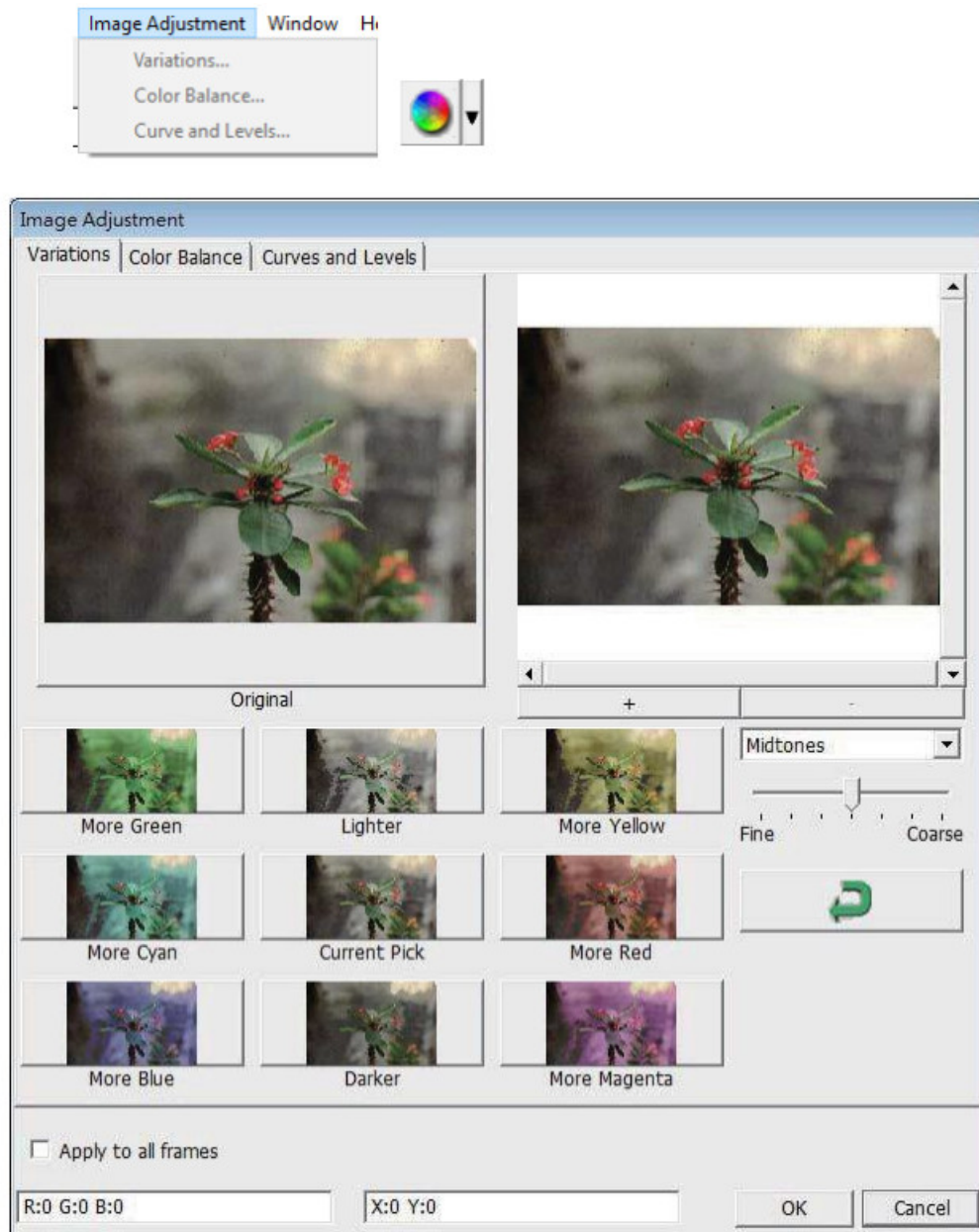
1 ☐ Enable user setting for auto-crop

	Width	Height	
Scan Size	3.749548	3.749548	Default
Scan Offset	Offset X 0.000000	Offset Y 0.000000	Default

2 3 4

OK Reset Cancel

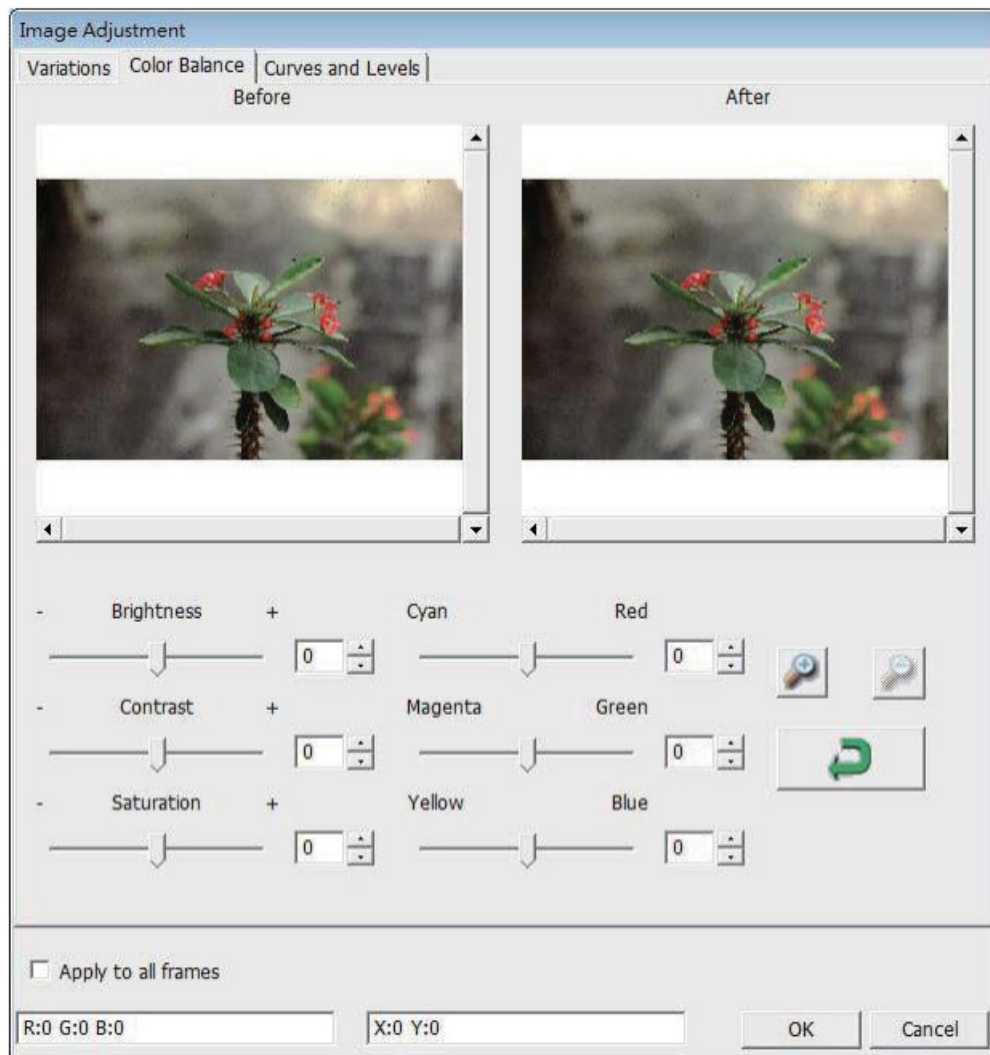
1. Enable user setting for auto-crop: This allows you to configure a smaller than standard 35mm scan area so it applies the same to every scan, this can be useful when scanning 110 slides, it cannot be set outside the 36.5 x 24.5 maximum scanning area, so there is no ability to capture the film sprocket area outside these dimensions
 2. OK: Returns you back to the main software interface and saves your settings
 3. Reset: Restores ALL settings back to factory defaults
 4. Cancel: Returns you back to the main software interface without saving your settings
- a. Image Adjustment — These tools are ONLY available in PRESCAN MODE ONLY
1. Variations: Generates different views of image with options to make changes to highlights, mid-tones, etc.



2. Color Balance

To adjust the brightness, contrast, saturation, and color (CMY or RGB) of the image.

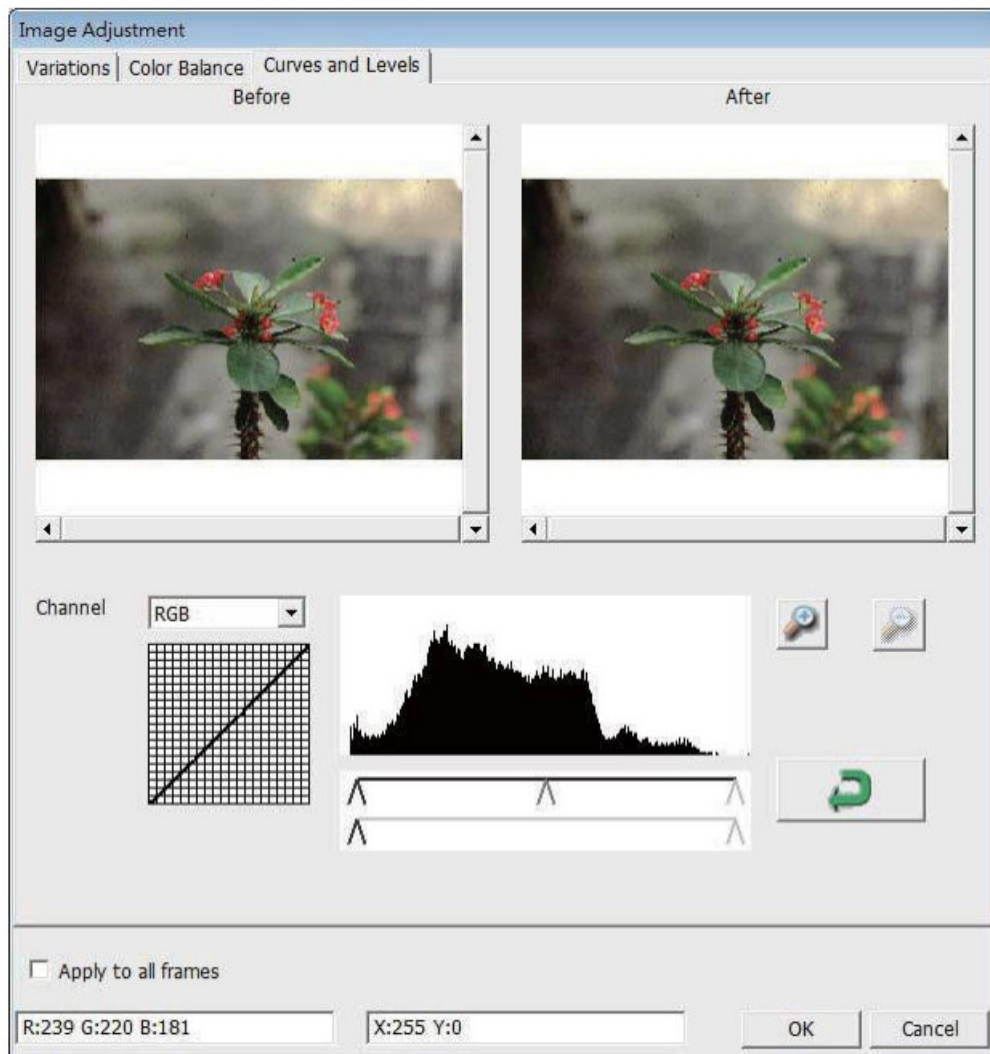
Comparisons between before and after adjusted images are shown for reference.



Example: If a previewed image appears too dark, use the “Brightness” slider in the “Color Balance” window to adjust the image by selecting the slider in the center and moving it to the right. The image’s “After” view becomes lighter. Select “OK” to accept the changes which will be sent to the scanning hardware. This can also be used to adjust each of the functioning “Color Balance” by contrast, saturation and specific color ranges of cyan, magenta and yellow.

3. Curves and Levels

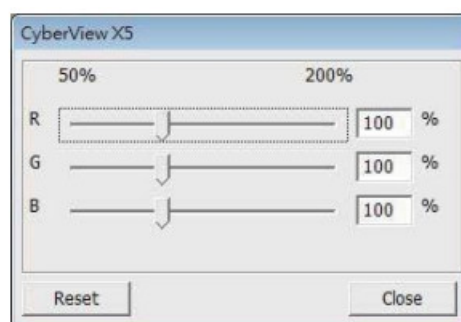
Adjust image settings by moving Curve and Levels settings. Comparison between before and after adjustment is displayed for reference.



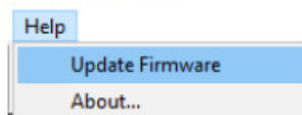
Example: When the previewed image appears to be too dark, adjustments with the Input slider in the Curves and Levels window can be made to correct the image. Selecting the Gray slider in the center and moving it to the left will result in changes in the “After” view resulting in a lighter image. Once the adjusted image is acceptable select “OK” to send changes to the scanning hardware. The same method can also be used to adjust each color channel independently, using the channel drop down menu “RGB = All colors” R =Red, G = Green, and B = Blue.

Menu Commands – Windows

1. Exposure Setting: To adjust the exposure time (R, G, B) press “Reset” to restore to the default setting.



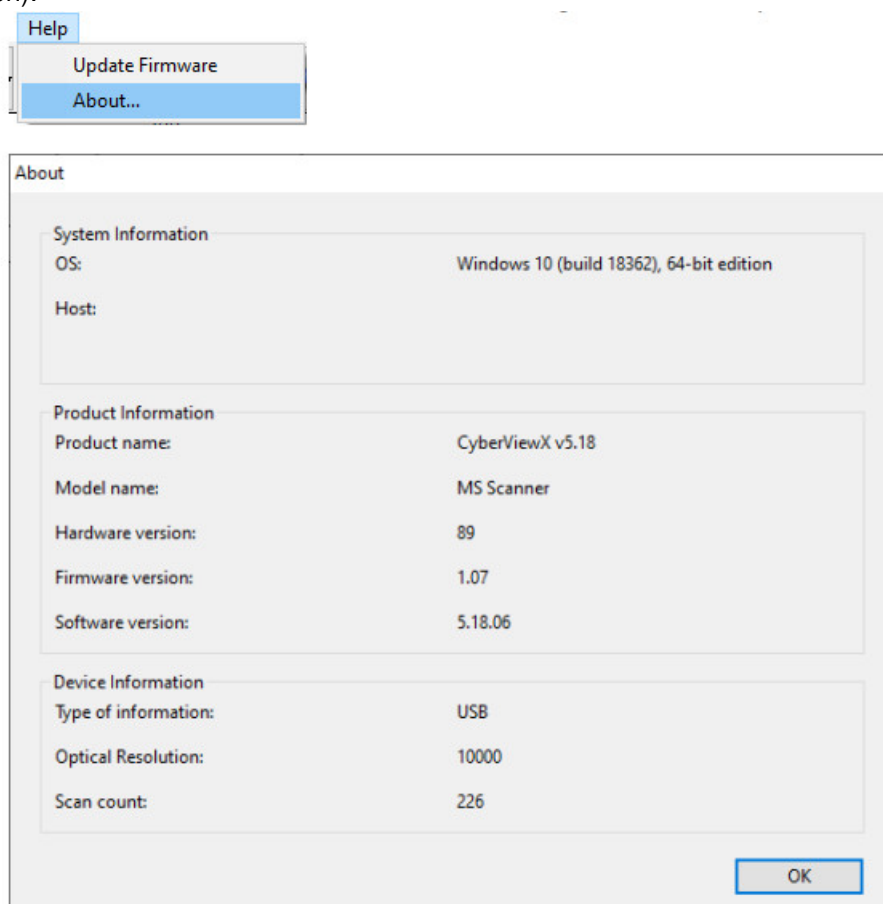
Menu Commands – Help



Update Firmware: Upgrade the firmware version, select the path where the file of firmware has been saved.

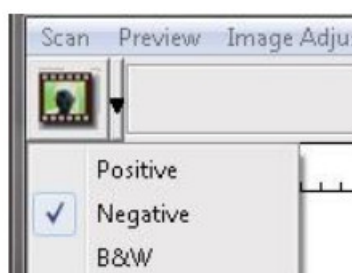
(These files may be downloaded from our) For step by step directions on updating the firmware see Troubleshooting area in this manual

About: Displays system information (including operation system, CPU), product information (including product name, model name, hardware version, firmware version, software version, device information including interface and optical resolution).




Function Bar Diagram

In order to optimize scanned image quality, please select your film type and brand from the toolbar: Negative, Positive (also known as Slide film) Black and White

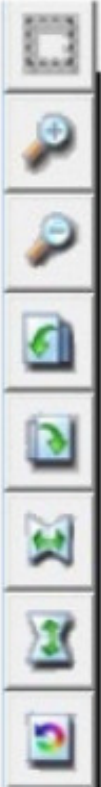


NOTE: This model can only scan negatives that have been cut into individual frames mounted into slide mounts

	Prescind: Pre-scan the current film, press drop down for more options.
	Scan: Scan film, press drop down button for more options.
	Image Adjustment: Press drop down button for more options.
	Backward One Frame: Moves film back one frame.
	Forward One Frame: Moves film forward one frame.
	Reload Magazine: Reset the frame number, the location number will be returned to 1
	Set Current Position: Change the current slide position number in the magazine.
	Go to: A pop-up dialogue box will prompt to enter which frame to change to.

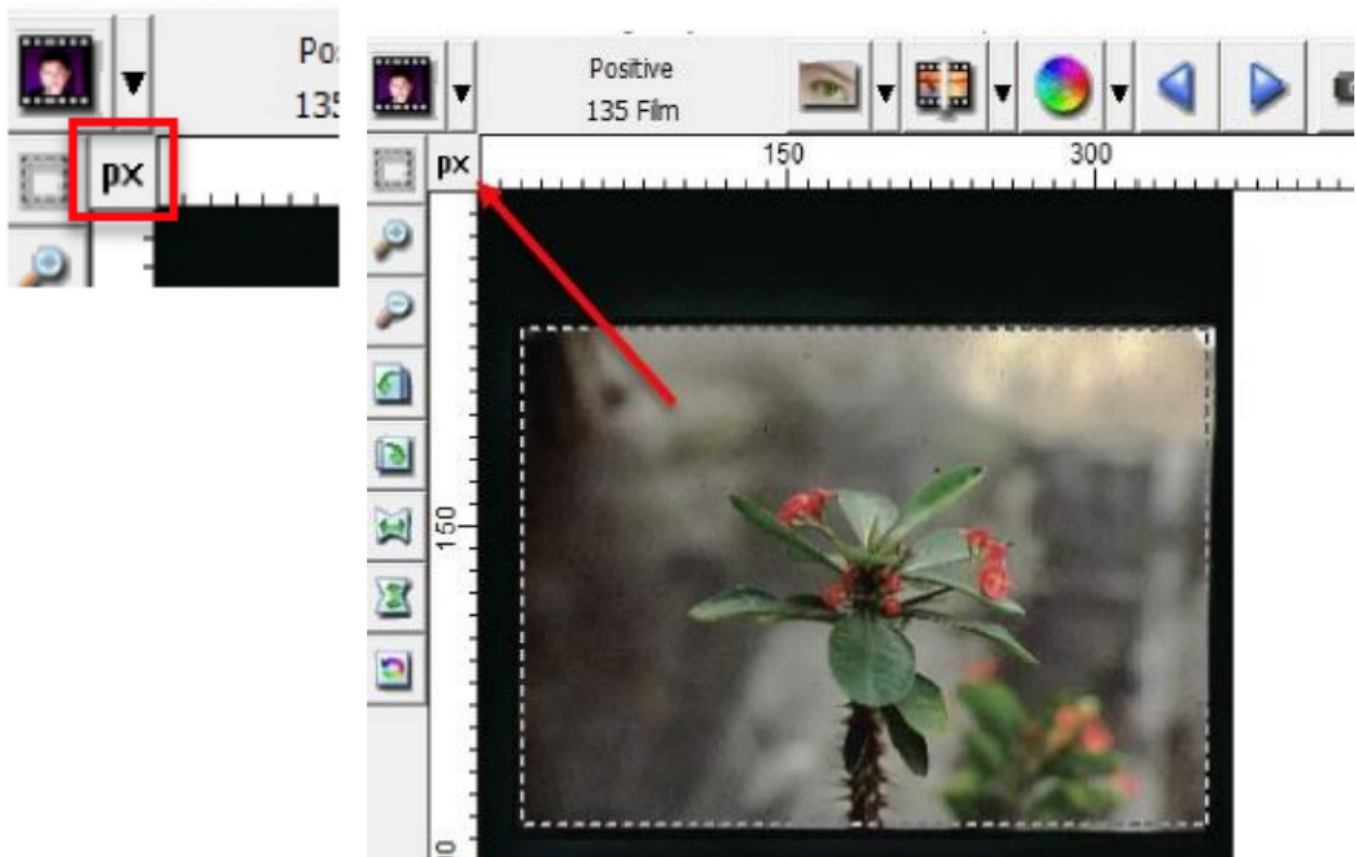
II. Preview Window Area [Fixed Windows]

Toolbar Diagram

	Select scan area: more than one selection can be made at a time.
	Zoom In: To magnify the image where the cursor is currently located. The image will be magnified with every click until the maximum multiple (1000%) is reached.
	Zoom Out: To reduce the size of the viewed image click the Zoom Out cursor to the desired area, the image will reduce by half with every click until the lowest multiple (25%) is reached.
	Rotate 90 Left: To rotate the image counter clockwise 90 degrees.
	Rotate 90 Right: To rotate the image clockwise 90 degrees.
	Flip Horizontal: To Flip the image 180 degrees horizontally.
	Flip Vertical: To Flip the image 180 degrees vertically.
	Revert: Discard all modifications and restores the image back to the original state in preview windows.

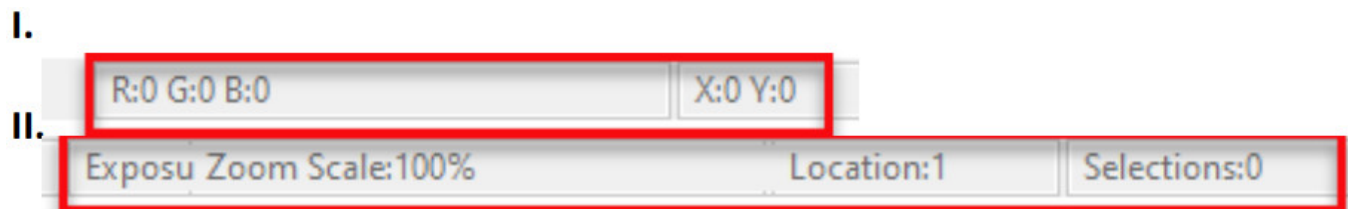
Preview Window

Preview the image you pre-scan, you can select the measurement unit “in the upper-left corner. cm“- “px“ by clicking



Status Line

In the lower left hand corner, the color level (RGB: red, green, blue) Displays the RGB (Red, Green, Blue) values in the image at the current pointer location [ex: 1]. The zoom scale, the current slide magazine location and how many areas selected to scan (2 or higher indicates: Multiple scan areas on one slide [ex: II].

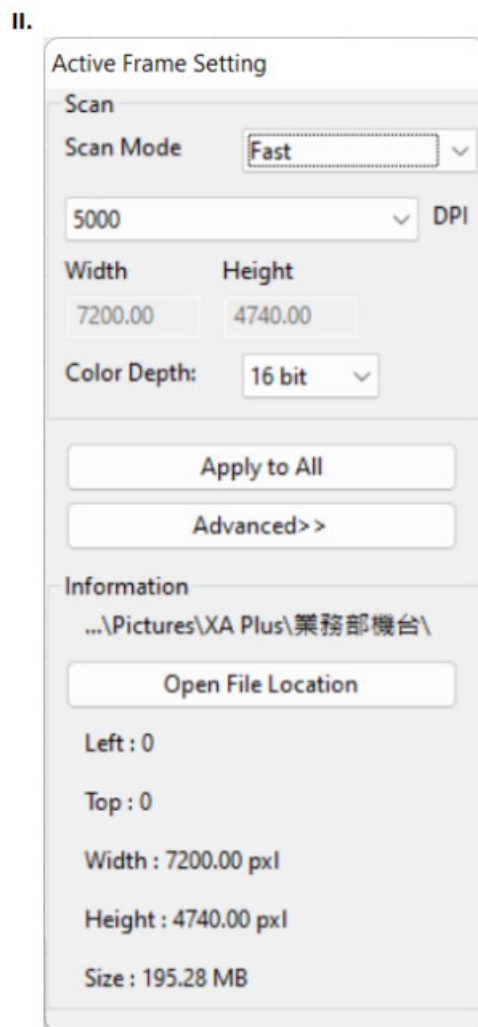
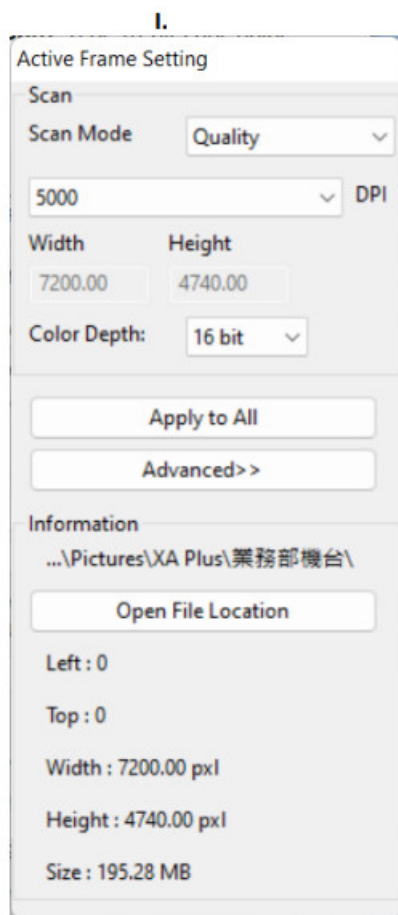


11I Active Frame Setting Area [Floating Windows]

A comprehensive advanced mode is available to allow for more user defined adjustments.

Fast mode [ex: I] : Scans 30% faster (including scan resolution, film size, color depth).

Quality mode [ex: II]: Scans slower for more detailed images such as optical and dental x-rays

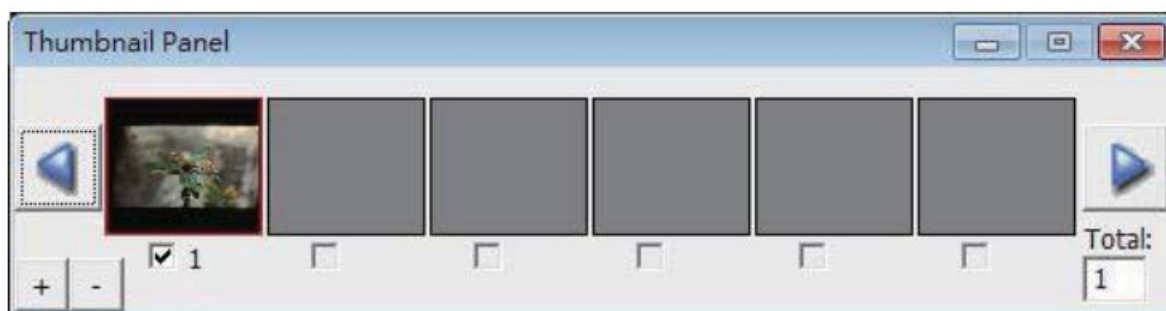


The “Active Frame Setting” only imitates in the current preview image, click “Apply to All” to set parameters in all previewed images, does not apply to direct scanning to file.

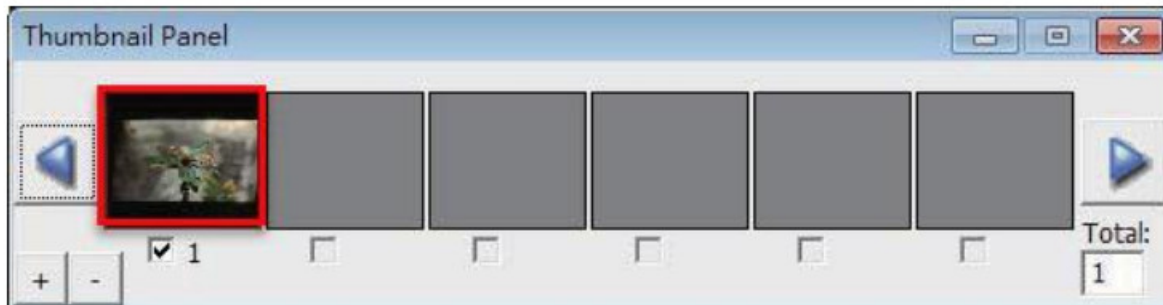
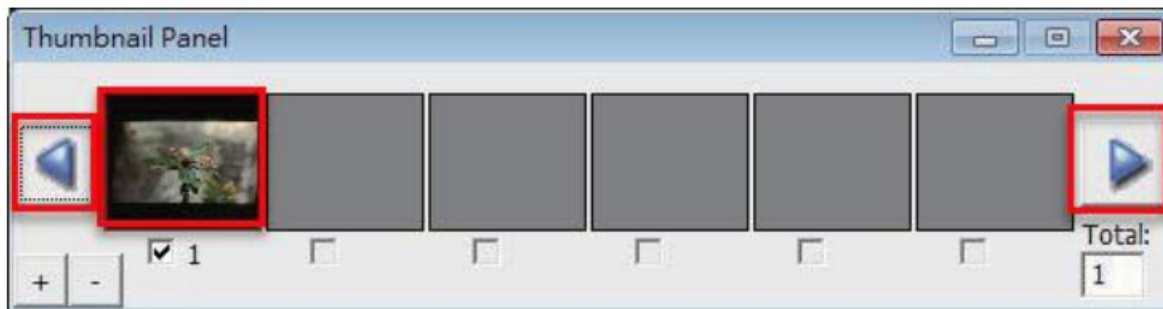
IV. Thumbnail Panel Area [Floating Windows]

Images only appear here in Prescind mode ONLY, scan to file goes directly to the hard drive, this window remains blank as does the main Cyber View window.

Displays thumbnail view of pre-scanned images. By default all pre-scanned images are selected. Note the small check mark below each image.



When scanning more than 6 frames (6 at a time are viewable in the thumbnail panel) you may scroll to view more by clicking on the right arrow button. The left/ right arrow buttons allow you to scroll through pre-scanned images with ease. To de-select frames you do not wish to scan click on the check mark box to remove selection.



SCAN DPI SETTINGS – Additional Information

Image sizes based on 36 x 24 mm area (your file sizes will differ based on cropping area)

Scan Resolution	Color Depth	Color Mode	File Size TIFF (no compression)		Color Depth	Color Mode	File Size TIFF (no compression)		Pixel Dimensions
300 dpi	8-bit	24-bit	0.362	MB	16-bit	48-bit	0.723	MB	415 x 267
500 dpi	8-bit	24-bit	1.004	MB	16-bit	48-bit	2.009	MB	692 x 446
600 dpi	8-bit	24-bit	1.446	MB	16-bit	48-bit	2.893	MB	830 x 535
1000 dpi	8-bit	24-bit	4.018	MB	16-bit	48-bit	8.035	MB	1384 x 892
1800 dpi	8-bit	24-bit	12.965	MB	16-bit	48-bit	25.930	MB	2492 x 1607
2500 dpi	8-bit	24-bit	25.110	MB	16-bit	48-bit	50.220	MB	3461 x 2232
3600 dpi	8-bit	24-bit	52.068	MB	16-bit	48-bit	104.136	MB	4954 x 3214
5000 dpi	8-bit	24-bit	100.440	MB	16-bit	48-bit	200.880	MB	6922 x 4464
7200 dpi	8-bit	24-bit	208.273	MB	16-bit	48-bit	416.546	MB	9968 x 6429
10,000 dpi	8-bit	24-bit	401.761	MB	16-bit	48-bit	803.522	MB	13,845 x 8929

Print output sizes				
Resolution	1000 Dpi	2400 Dpi	3200 Dpi	5000 dpi
Print Output sizes	3 x 5	7 x 10	9 x 14	14 x 20
Print output dpi	267 dpi	310 dpi	293 dpi	325 dpi
Scanned Image pixel size needed	1332 x 860 Pixels	3197 x 2064	4262 x 2752	6541 x 4421
To Print at 300 dpi				
4 x 6	5 x 7	8 x 10	11 x 14	16 x 20
1200 x 1800	1500 x 2100	2400 x 3000	3300 x 4200	4800 x 6000
*Scan at 1200	*Scan at 1500	*Scan at 2400	*Scan at 3300	*Scan at 4800
*Approximate resolution needed				

HASSLE FREE SCAN TIPS

Screen images differ slightly but commands identical for PC and MAC Basic Quick Scanning or once you have everything configured to your liking

1. Turn on scanner wait for green light to come on solid, indicating it is fully warmed up
2. Open Cyber View and click on Reload Magazine icon on the toolbar, to rest the scanners internal counter back to ZERO, this will alleviate it stopping for no apparent reason mid tray

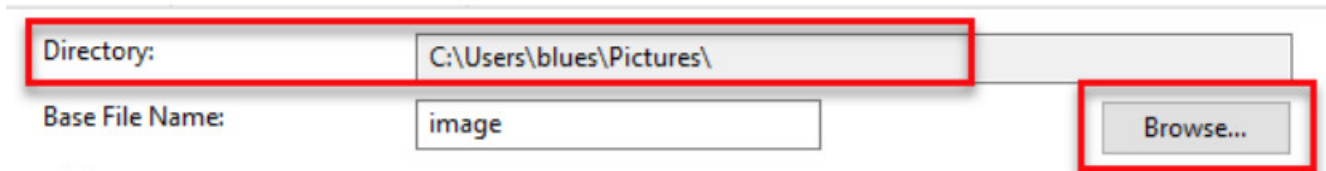


3. Load the tray full of slides, and then begin your scanning
4. Go to Scan — Scan — Multi-Scan to file — set Range 1-50 more detailed information below
NOTE: If the scanner sits quietly for 10-15 minutes it will go to sleep and loose communication
EXAMPLE: You set it up to scan a tray, then walk away, it then finishes and has been sitting, the software will then produce “Unable to communicate” errors
TO FIX: You must Close Cyber View, Turn off the scanner, wait 10 seconds, turn on the scanner and then wait for the full warm up to a solid green light before starting the Cyber View software again.

Advanced Tips

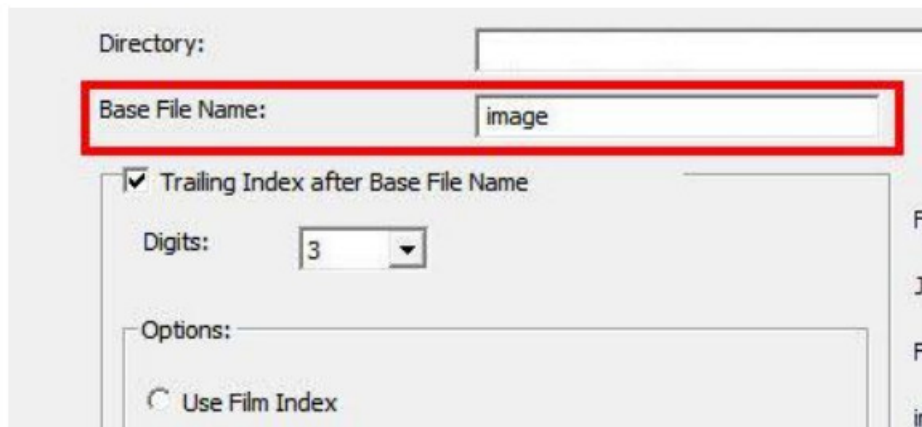
Slide numbering tips

Go to Scan — Preference — Positive Film — This is where you will set up your desired configuration settings
Directory — This is where the files will be saved to



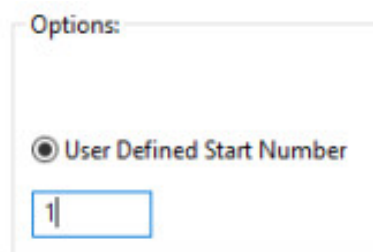
A screenshot of a software interface showing two input fields. The first field is labeled 'Directory:' and contains the text 'C:\Users\blues\Pictures\'. The second field is labeled 'Base File Name:' and contains the text 'image'. To the right of the 'Base File Name:' field is a button labeled 'Browse...'. Red rectangular boxes highlight the 'Directory:' field, the 'Base File Name:' field, and the 'Browse...' button.

To change the Default Save to location select BROWSE
Base File Name is the name each file will be given with a number following



A screenshot of a software interface showing the 'Base File Name' field with the text 'image'. Below this field is a checkbox labeled 'Trailing Index after Base File Name' which is checked. To the right of the checkbox is a dropdown menu labeled 'Digits:' with the value '3' selected. Below the 'Digits:' dropdown is a section labeled 'Options:' with a radio button labeled 'Use Film Index' which is not selected. Red rectangular boxes highlight the 'Base File Name' field and the 'Trailing Index after Base File Name' checkbox.

Trailing Index after base file name – Is the number of digits you would like in your file naming sequence, default number is 3 – Image001, you can select 1-6 digits for this which would result in naming as follows Image1, Image01, Image001, Image0001, Image00001, Image000001 — this can be changed at any time
Example Image001 is the default so the files will be named Image001, Image002 and so on
You can customize this to a name of your choosing to aid in organization
Examples: Germany_ would result in file names Germany_001, Germany_002 Or
Slides_ then the names would be Slides_001, Slides_002 the underscore leaves a nice separation from the number of the file, another option is to use years 1970_ file names would be 1970_001, 1970_002, 1970_003 etc.
User Define Start number — This allows custom numbering and when selecting SAVE on exit will keep track of where you left off, on what slide number next in the sequence, Film index counts the slot #'s and can get tricky if you scan less than full trays or have to start in the middle after a jam.

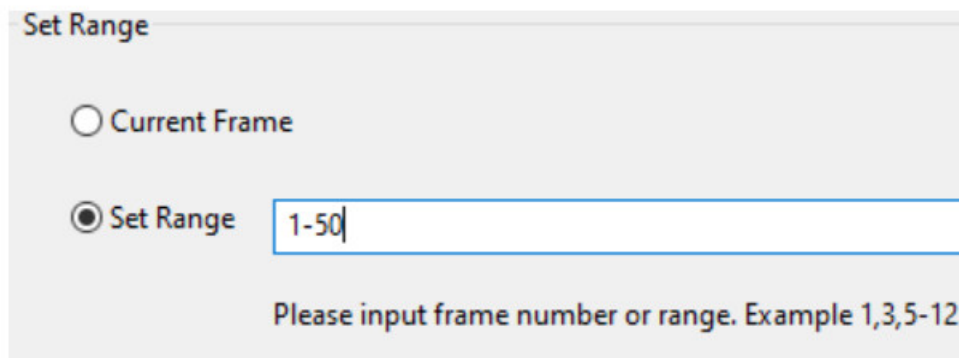


A screenshot of a software interface showing the 'Options:' section. It contains a radio button labeled 'User Defined Start Number' which is selected. Below the radio button is a text input field containing the number '1'.

NOTE: When batch scanning the included tray holds 50 slides, therefore when selecting Scan — Multi-Scan to File – Set Range it will be the PHYSICAL number of slides in the tray 1-50 if full, or 1- however many you have in the tray



Current Frame applies to scanning a single slide inserted into the tray and using the Forward button loading the slide inside the scanner

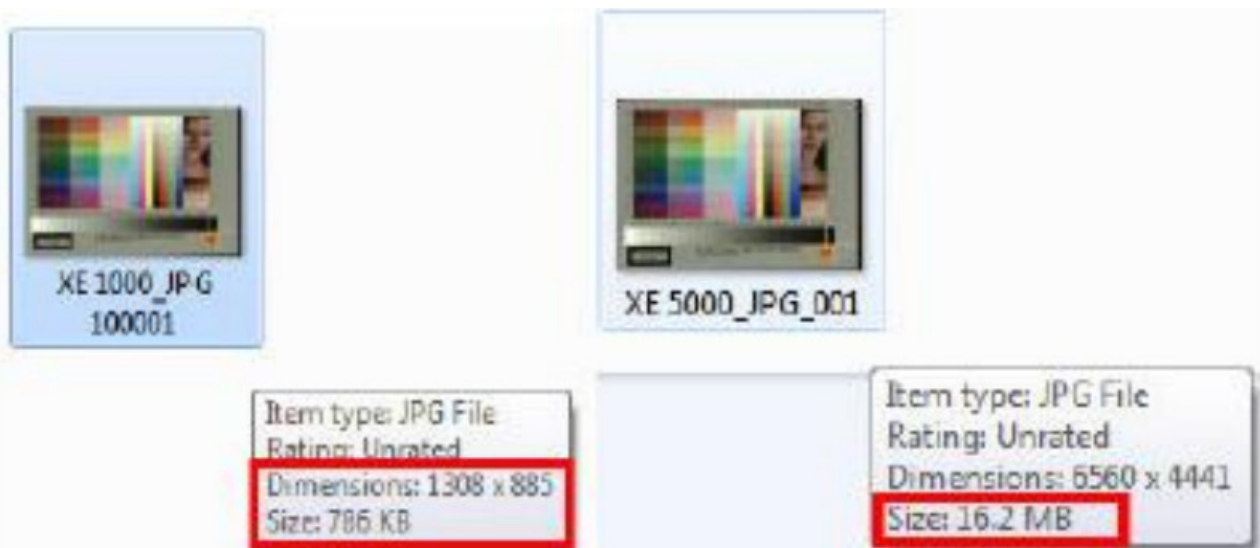


File Type

TIF – Uncompressed best quality — Best used when you want to post edit the scans before burning to DVD etc. provides the most data to work with when editing

JPG – Compressed — compression is advanced making the files small —compresses and discards much of the original scanned image data during the save process EXAMPLE an 1000 dpi, 8 bit (billions of colors) TIF image is approximately 3.83 MB, selecting the JPG 100 will give you a less than 786 kb image from that original 3.83 MB and if you select 16 bit color (trillions of colors) the TIF would be 7.87 MB vs the same 786 kb for JPG, because JPG compression does not support 16 bit color option. For the best possible images for editing use TIF – 16 bit For Archiving for just burning to disk making slide shows etc. no editing involved, JPG is a good choice Also if you scan at 5000 dpi the TIF would be 196.7 MB and the resulting JPG will be of much higher quality at 16.2 MB

NOTE: The scanner can only physically scan TIF images, the JPG conversion is all handled by the software, so scanning in TIF vs JPG using the same resolution settings will not result in longer scan times, only DPI settings can affect this.



Removing a jammed slide from inside the scanner

1. Close the Cyber View scanning software
2. Turn off the scanner power, disconnect the power cable from the back of the unit
3. Remove the cap from the slide retrieval area (Fig. 1)
4. Next remove the inner slide aligner (Fig 2.) by lifting straight up and out

Fig. 1

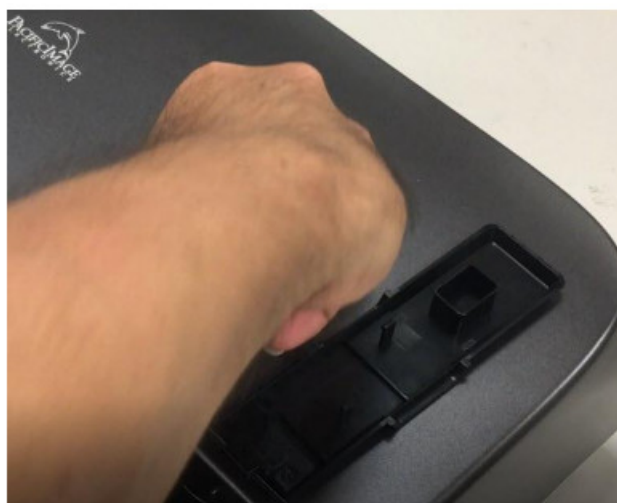
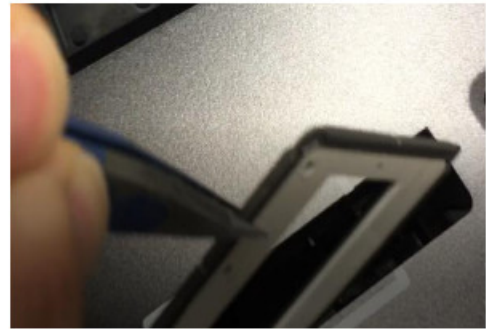
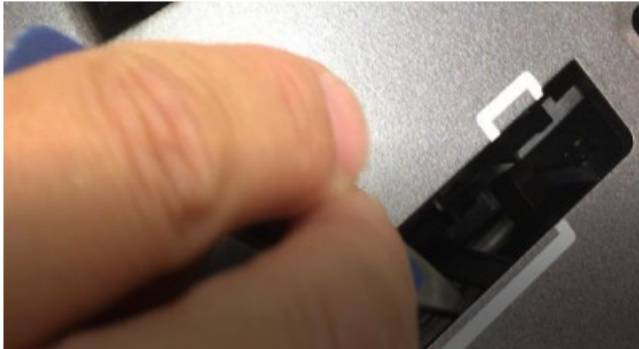


Fig. 2 Lift up and out



5. Now you have access to the inside, using thin tweezers reach inside and grab the stuck slide (Fig. 3)

Fig. 3



6. Once stuck slide has been retrieved, replace slide aligner, and cover back onto the scanner.

TECHNICAL SUPPORT

Cyber View

For information regarding the film scanner and Cyber View driver, please visit <https://www.scanace.com>

For additional Troubleshooting an tips click here


Transporting the device

For safety purposes, follow the procedure below before transporting the scanner (i.e. before moving the scanner from one location to another or packing and shipping the unit):

1. Plug in the power adapter Turn on the power switch.
2. Wait for the scanner to warm up (around 3 minutes). The LED indicator will always blink during warm up.
3. After LED indicator turns ON solid, turn off the power switch.

CYBERVIEW

Documents / Resources

	<p>CyberView X5-MS Slide Scanner [pdf] User Manual X5-MS, X5-MS Slide Scanner, Slide Scanner, Scanner</p>
---	---

References

- [Pacific Image Electronics Co., Ltd](#)
- [scanace.com/product/troubleshooting](https://www.scanace.com/product/troubleshooting)

- scanace.com/sd.php?pid=&cid=&pcid=21
- [User Manual](#)

Manuals+.