



CyberPower OL5KRTHDL Smart UPS User Guide

[Home](#) » [CyberPower](#) » CyberPower OL5KRTHDL Smart UPS User Guide 

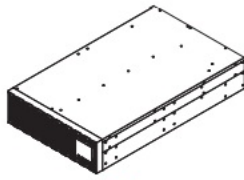
CyberPower®

OL5KRTHDL/OL6KRTHDL
QUICK START GUIDE

Contents

- 1 UNPACKING
- 2 RACKMOUNT INSTALLATION
- 3 TOWER INSTALLATION
- 4 CONNECTING INTERNAL BATTERY
- 5 UPS INPUT ELECTRICAL CONNECTION
- 6 POWER ON THE UPS SYSTEM
- 7 Documents / Resources
 - 7.1 References

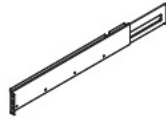
UNPACKING



1



2



3



4



5



6



7



8



9



10



11



12



13



14



15



16



17



18



19



20



21

ITEM	CONTENT	QTY
1	UPS	1
2	Rackmount left rail	1
3	Rackmount right rail	1
4	Left hanging bracket	1
5	Right hanging bracket	1
6	Serial Interface Cable (RS-232)	1
7	USB communication cable	1
8	Quick Start Guide	1
9	Installation and Operation Manual	1
10	Registration warranty card	1
11	PowerPanel Management Software Download Card	1
12	Rackmount ears	2
13	Black M5X7L Flat Head Screws	8
14	Black M5X8L Pan Head Screws	12
15	Silver M5X6L Pan Head Screws	6
16	Plastic washers	8
17	Screw hole dust covers	18
18	Rubber pads	12
19	Stand	2
20	Input bottom cover	1
21	Screwdriver	1

Need Additional Help? See Operation and Installation Manual provided and also available to download at www.cyberpowersystems.com.

Still Need Help? Please contact our Tech Support department with installation, troubleshooting, or general product questions.

CyberPower Technical Support | 1-877-297-6937 | tech@cpsww.com | cyberpowersystems.com

4241 12th Avenue E, Suite 400, Shakopee, MN 55379, USA

Hours of Operation: Monday – Friday, 7:00am – 6:00pm (CST)

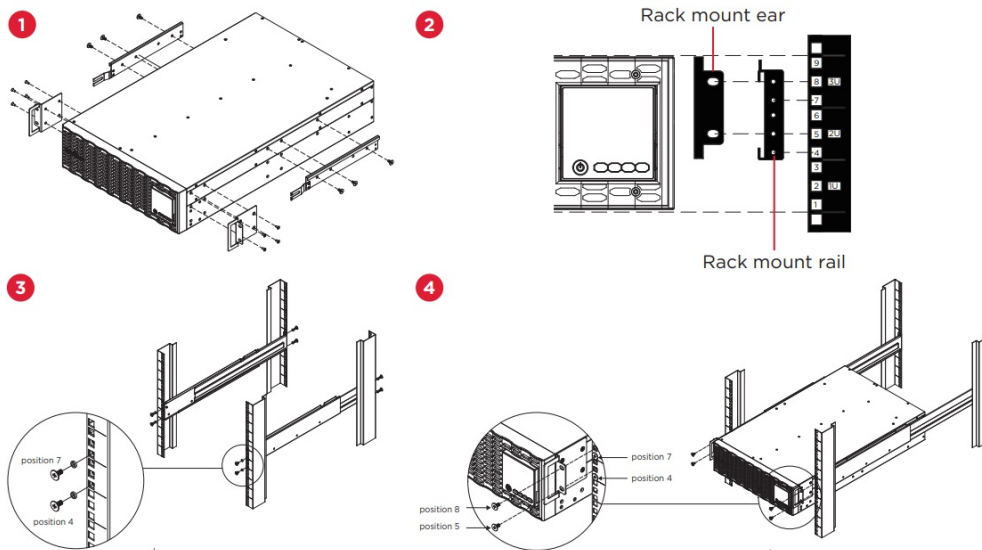
This document is believed to be accurate, but CyberPower reserves the right to change or correct the contents and does not assume any responsibility for omissions or errors. Entire contents copyright © 2023 Cyber Power Systems, Inc. All rights reserved.

Reproduction in whole or in part without permission is prohibited. K01-0001041-00

RACKMOUNT INSTALLATION

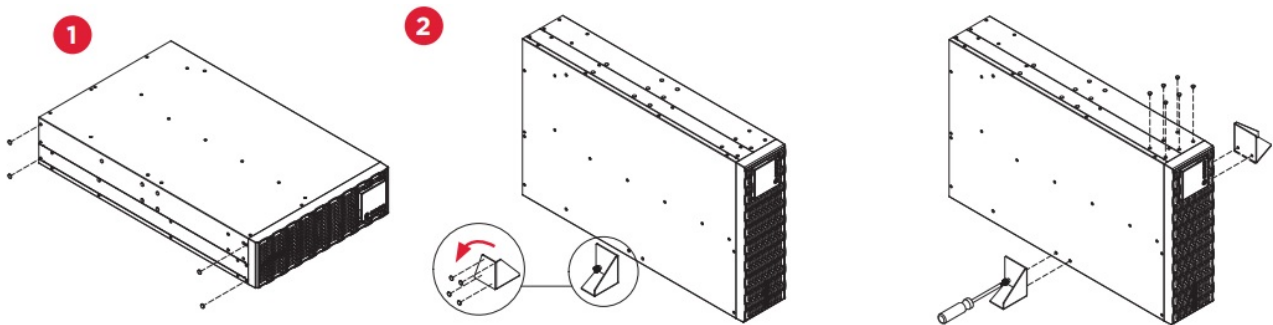
1. Install rack mount ears using eight black M5X7L fat head screws and hanging brackets using six silver M5X6L pan head screws.
2. Locate space where the UPS will be installed in the rack.

3. Install rack mount rails using eight M5X8L pan head screws with plastic washers and adjust rails to necessary rack depth.
4. Place and secure the UPS on to the rack mount rails using four black M5X8L pan head screws.



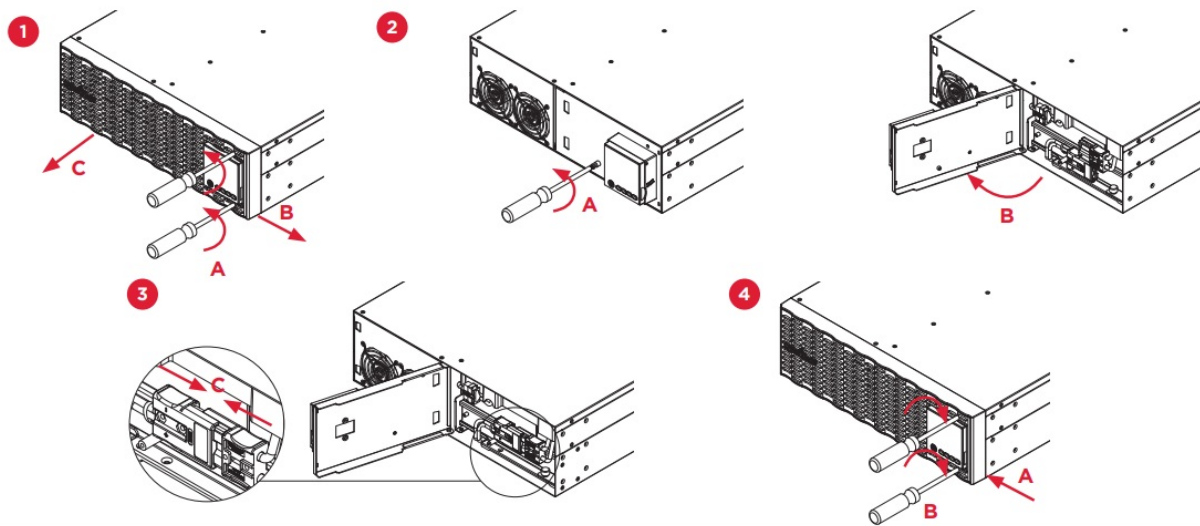
TOWER INSTALLATION

1. Adhere twelve circular rubber pads to the stands and to the left hand side of the UPS as shown below. This will become the bottom of the UPS.
2. Stand the UPS system on its side and tighten the screws on the tower stands onto the bottom of the UPS as shown below. Insert the dust covers into the open screw holes on top.



CONNECTING INTERNAL BATTERY

1. Unscrew and push the front panel to left side to remove it.
2. Unscrew and open the battery access door. This screw is designed to be fixed on the door, do not remove it from the metal cover.
3. Connect the internal battery connector. Ensure it is seated properly (connector will click into place).
4. Tighten the screw of battery access cover and install the front panel.



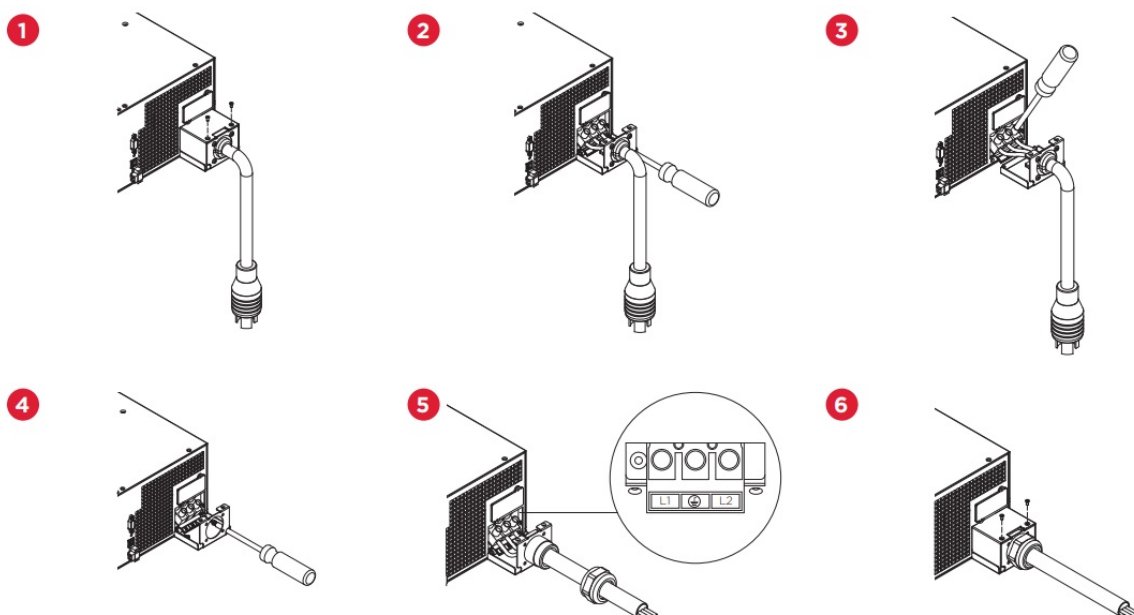
UPS INPUT ELECTRICAL CONNECTION

OL5KRTHDL and OL6KRTHDL PRE-INSTALLED L6-30P INPUT POWER CORD CONNECTION:

Connect the NEMA L6-30P input power cord directly to utility power.

OL5KRTHDL and OL6KRTHDL INPUT TERMINAL BLOCK CONNECTION:

1. Remove the top section of the input terminal cover by removing the top two screws.
2. Remove the bottom section of the input terminal cover by removing the bottom two screws.
3. Disconnect the three wires from input terminal block.
4. Fix the input bottom cover on the rear panel by tightening two screws.
5. Insert the input cable through the appropriate cable gland (not included). Connect the three wires to the input terminal block.
6. Fix the top cover on the bottom cover by tightening two screws.
7. After the unit is powered up, use the LCD to enter the Setup menu. Select "Main Menu" than "Set Up" and fnally "With Power Cord" and change it to "Disable" and save the update.



IMPORTANT! Make sure the utility circuit breaker feeding the UPS input is in the OFF position.

IMPORTANT! OL5KRTHDL and OL6KRTHDL are pre-installed L6-30P INPUT POWER CORD, the UPS will be

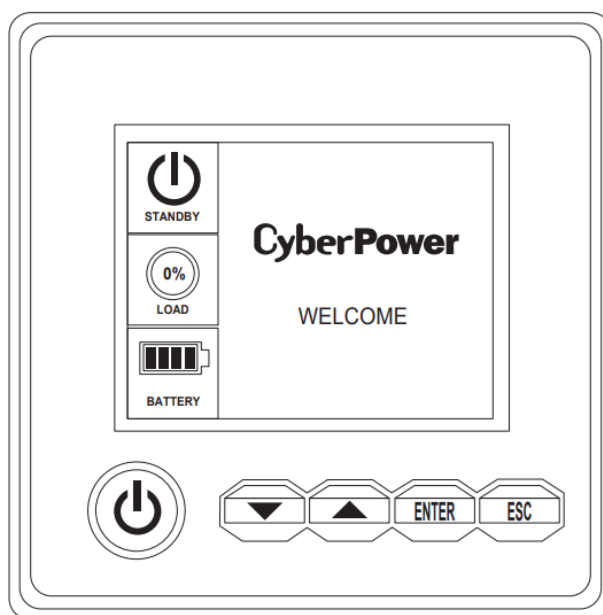
derated base on input voltage, UPS need to change to Hardwire connection to have full power rating.

IMPORTANT! Verify the input branch circuit breaker and wiring meet the recommended sizing:

UPS CAPACITY	BRANCH CIRCUIT BREAKER	WIRING AWG	WIRING 2 mm	SCREW TORQUE lbf-in	WIRING TYPE
5KVA 6KVA	50A	8 AWG	8.0 mm 2	18 lbf-in	Copper wire minimum 90°C

POWER ON THE UPS SYSTEM

1. Switch the utility circuit breaker feeding the UPS to the ON position.
2. Turn the UPS ON – push and hold the ON/OFF power button for 3 seconds; you will hear continuous beeps.
3. UPS will perform a brief self-test lasting about 15 seconds then the UPS is operating in Battery Mode 0% first then transfer to Line Mode if Input power is qualification and powering the output.
4. Customize UPS system configuration settings as needed. See User's Manual for complete details. User Manual is available to download on www.cyberpowersystems.com.
5. Connect equipment load to the UPS system.



CyberPower®



CyberPower OL5KRTHDL Smart UPS [pdf] User Guide

OL5KRTHDL Smart UPS, OL5KRTHDL, Smart UPS, UPS

References

- [CP CyberPower UPS Systems, Battery Backup, PDUs, USB Surge Protectors](#)
- [CP CyberPower UPS Systems, Battery Backup, PDUs, USB Surge Protectors](#)
- [CP CyberPower UPS Systems, Battery Backup, PDUs, USB Surge Protectors](#)
- [User Manual](#)

[Manuals+](#), [Privacy Policy](#)

This website is an independent publication and is neither affiliated with nor endorsed by any of the trademark owners. The "Bluetooth®" word mark and logos are registered trademarks owned by Bluetooth SIG, Inc. The "Wi-Fi®" word mark and logos are registered trademarks owned by the Wi-Fi Alliance. Any use of these marks on this website does not imply any affiliation with or endorsement.