



Cyber Power B007NMSULE Environmental Sensor User Manual

[Home](#) » [Cyber Power](#) » Cyber Power B007NMSULE Environmental Sensor User Manual 

Contents

- [1 Cyber Power B007NMSULE Environmental Sensor](#)
- [2 USER MANUAL](#)
- [3 OVERVIEW](#)
- [4 FEATURES](#)
- [5 PACKAGE CONTENTS](#)
- [6 SPECIFICATIONS](#)
- [7 INSTALLATION GUIDE](#)
- [8 TROUBLESHOOTING](#)
- [9 FOR MORE INFORMATION](#)
- [10 CONFORMANCE APPROVALS](#)
- [11 Documents / Resources](#)
 - [11.1 References](#)
- [12 Related Posts](#)



Cyber Power B007NMSULE Environmental Sensor



Product Information

Specifications

- **Model Number:** Environmental Sensor
- **Input Voltage:** Not specified
- **Power Dissipation:** Not specified
- **Temperature:** Not specified
- **Humidity:** Not specified
- **Connection Port:** RJ45 Port
- **Input Dry Contact:** Open/Short Circuit
- **Dimensions:** Not specified
- **Weight:** Not specified
- **Safety Approvals:** Not specified
- **Warranty:** Not specified

Product Usage Instructions

Method 1: Hook and Loop Tape Mounting

1. Clean the surface where the sensor will be installed.
2. Apply one side of the hook and loop tape to the bottom of the sensor and the other side to the sensor location.
3. Attach the sensor on the surface and hold for about 5 seconds to ensure cohesion.
4. To connect the sensor with RMCARD/PDU, use the attached RJ45 Ethernet Cable. Plug one end into the RJ45 Port and the other end into the RMCARD/PDU.

Method 2: Fixed Mounting

1. Drill a hole compatible with the anchor and insert the included anchor.
2. Insert and tighten the screw into the anchor, leaving enough exposed for the sensor to be mounted.
3. Hang the sensor horizontally or vertically.
4. To connect the sensor with RMCARD/PDU, use the attached RJ45 Ethernet Cable. Plug one end into the RJ45 Port and the other end into the RMCARD/PDU.

FAQ

Troubleshooting

Problem	Solution
The RMCARD/PDU is not able to acquire environmental sensor's information.	Check the LED. Ensure correct connection of the RJ45 Ethernet cable between RMCARD/PDU and sensor.
The Input Dry Contact does not function correctly.	Ensure correct wiring of Input Dry Contact and check settings on connected devices.

YOUR ULTIMATE ALLY IN POWER ENVIRONMENTAL SENSOR ENVIROSENSOR

USER MANUAL

Cyber Power Systems (USA), Inc.

4241 12th Avenue East, Suite 400 | Shakopee, MN 55379 CyberPowerSystems.com

OVERVIEW

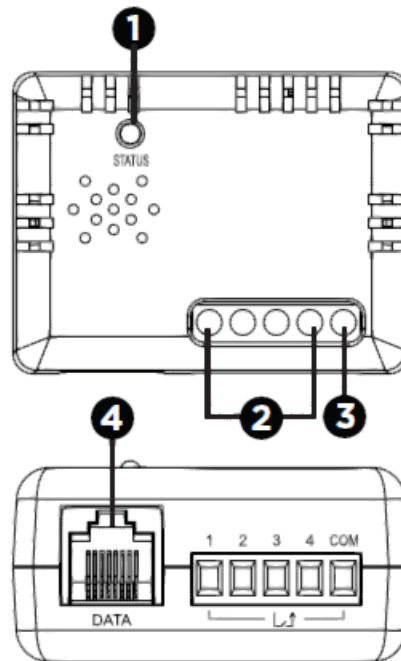
The CyberPower environmental sensor (ENVIROSENSOR) along with selected Remote Management Cards (RMCARDXXX) or most Switched and Monitored PDUs enables users to monitor the temperature and humidity of a server closet and/or data center remotely. With CyberPower's PowerPanel® Business software, users can establish thresholds that will automatically notify users when an event has occurred via email, SMS and SNMP traps. Additionally, the ENVIROSENSOR provides four input dry contacts that enable users to monitor the status of connected devices, such as door switch sensors.

FEATURES

- Real time environment monitoring
- Remote management and configuration of the sensor via Web Browsers or NMS
- Automatic events notification via email, SMS and SNMP traps
- 4 input dry contacts application interface provided
- Displays the name and location of the sensor and connected devices

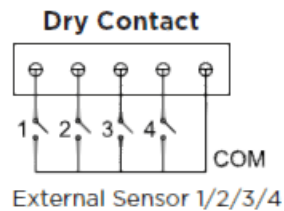
1. LED

2. Input Dry Contact 1-4
3. Common Connection
4. RJ45 Port (connect to RMCARD/PDU)



Input Dry Contact Application

Do not input signals that carry voltage into the input dry contacts. The input dry contacts only allow for open/short circuit.



PACKAGE CONTENTS

1. ENVIROSENSOR
2. Hook and loop tape
3. User Manual
4. Flat Head Screw (M3x20) with plastic nylon anchors
5. CAT5 RJ45 Ethernet Cable (10 ft. / 3.0 m)

SPECIFICATIONS

- Model Number: ENVIROSENSOR
- Input Voltage: 7V – 28V
- Power Dissipation:
- Halt mode 72 mW Normal mode 110 mW (Default 12V input)

- Temperature: 32-158°F with accuracy +/- 1.8°F 0-70°C with accuracy +/- 1°C
- Humidity: 10-90 RH with accuracy +/- 2%
- Connection Port: RJ45 Port
- Input Dry Contact: 4
- Dimensions: 2.32 x 1.77 x 1.14 in. 59 x 45 x 29 mm
- Weight: 1.46 oz / 41.5 g
- Safety Approvals: FCC Class B / CE / EAC
- Warranty: 3-Year Limited

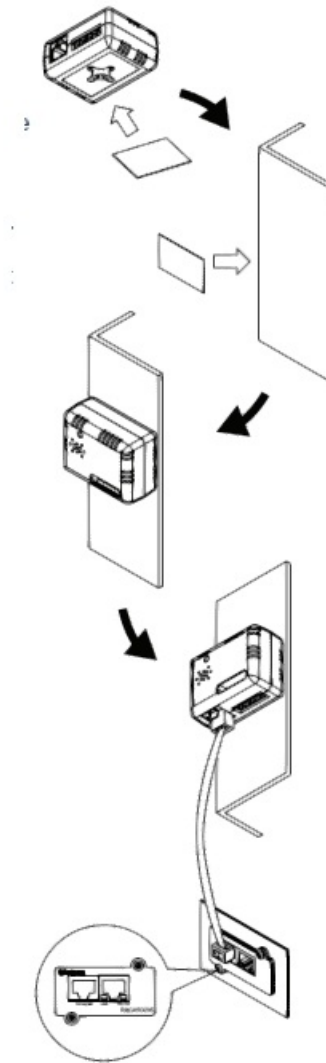
WARNING: This product can expose you to chemicals including bisphenol A (BPA) and styrene (ABS), which is known to the State of California to cause reproductive harm and cancer. For more information, go to www.P65Warnings.ca.gov.

INSTALLATION GUIDE

Method 1: Hook and Loop Tape Mounting

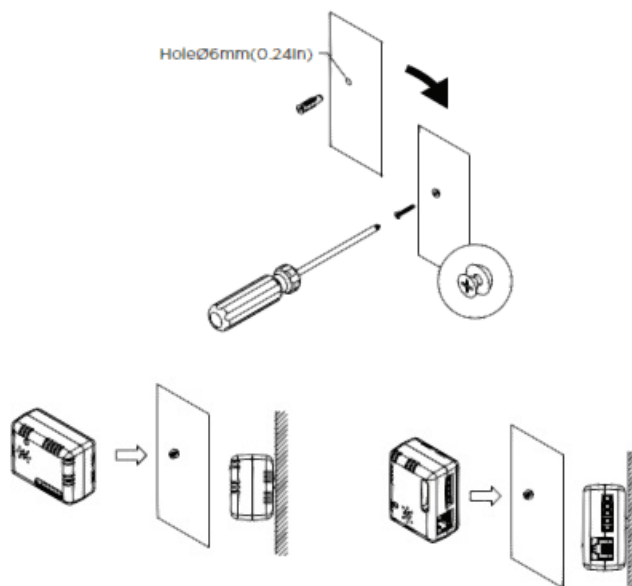
1. Step 1. Clean the surface of the area where the sensor will be installed. Apply one side of the hook and loop tape to the bottom of the sensor and the other side to the sensor location.
2. Step 2. Attach the sensor on the surface and hold for about 5 seconds to ensure cohesion.
NOTE: Once the sensor is installed, you will want to leave it in place to ensure the the hook and loop tape maintains its adhesiveness.
3. Step 3. To connect the sensor with RMCARD/PDU, use the attached RJ45 Ethernet Cable. Plug one end into the RJ45 Port and the other end into the RMCARD/PDU.

NOTE: If the distance of RMCARD/PDU and the sensor is longer than 10 feet/3.05 m, use a standard RJ45 Ethernet Cable as needed (max 50 feet/15 m).



Method 2: Fixed Mounting

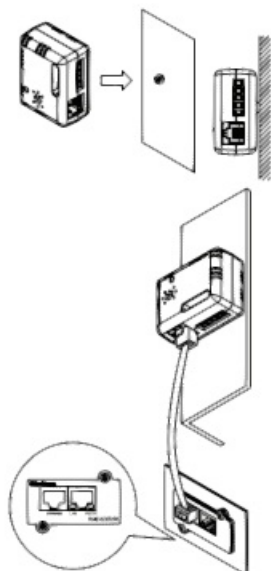
1. Step 1. Drill a hole that is compatible with the anchor and insert the included anchor.
2. Step 2. Insert and tighten the screw into the anchor. Leave enough of the screw exposed for the sensor to be mounted to
3. Step 3. Hang the sensor horizontally or vertically.
- 4.



Step 4. To connect the sensor with RMCARD/PDU, use the attached RJ45 Ethernet Cable. Plug one end into

the RJ45 Port and the other end into the RMCARD/PDU.

For further configuration information, please refer to the RMCARD/PDU user’s manual.



TROUBLESHOOTING

Problem	Solution
The RMCARD/PDU is not able to acquire environment sensor’s information	<p>Check the LED.</p> <p>When the connection is ok, the LED should always be on; otherwise, ensure the RJ45 Ethernet cable is correctly connected to the RMCARD/PDU and sensor.</p> <p>Note: Do not use a crossover cable which is for Tx/Rx.</p>
The Input Dry Contact does not function correctly	<p>Ensure the Input Dry Contact wires are correctly connected and make sure the open/short circuit setting of the connected devices is the same as the setting on the Web Interface.</p>

FOR MORE INFORMATION

Visit [CyberPowerSystems.com](https://www.cyberpowersystems.com) for more information regarding:

- Product information and certifications
- Product warranty
- Connected equipment guarantee

TECHNICAL SUPPORT

Visit: [CyberPowerSystems.com/support](https://www.cyberpowersystems.com/support)

Toll-Free: 1-877-297-6937

© 2024 Cyber Power Systems (USA), Inc. All rights reserved. All other trademarks are the property of their respective owners.

CONFORMANCE APPROVALS

This device complies with Part 15 of the FCC Rules. Operation is subject to the following two conditions:

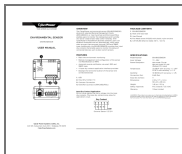
1. this device may not cause harmful interference, and
2. this device must accept any interference received, including interference that may cause undesired operation.

This equipment has been tested and found to comply with the limits for a Class B digital device, pursuant to Part 15 of the FCC Rules. These limits are designed to provide reasonable protection against harmful interference in a residential installation. This equipment generates, uses, and can radiate radio frequency energy and, if not installed and used in accordance with the instructions, may cause harmful interference to radio communications. However, there is no guarantee that interference will not occur in a particular installation. If this equipment does cause harmful interference to radio or television reception, which can be determined by turning the equipment off and on, the user is encouraged to try to correct the interference by one or more of the following measures:

- Reorient or relocate the receiving antenna.
- Increase the separation between the equipment and receiver.
- Connect the equipment into an outlet on a circuit different from that to which the receiver is connected.
- Consult the dealer or an experienced radio/TV technician for help.

WARNING: Changes or modifications not expressly approved by the party responsible for compliance could void the user's authority to operate the equipment.

Documents / Resources



[Cyber Power B007NMSULE Environmental Sensor](#) [pdf] User Manual
B007NMSULE Environmental Sensor, B007NMSULE, Environmental Sensor, Sensor

References

- [CP CyberPower UPS Systems, Battery Backup, PDUs, USB Surge Protectors](#)
- [CP Support | CyberPower](#)
- [P65Warnings.ca.gov](#)
- [User Manual](#)

[Manuals+](#), [Privacy Policy](#)

This website is an independent publication and is neither affiliated with nor endorsed by any of the trademark owners. The "Bluetooth®" word mark and logos are registered trademarks owned by Bluetooth SIG, Inc. The "Wi-Fi®" word mark and logos are registered trademarks owned by the Wi-Fi Alliance. Any use of these marks on this website does not imply any affiliation with or endorsement.