

Custom MYshade ZigBee Bridge Motorized Roller Shade Installation Guide

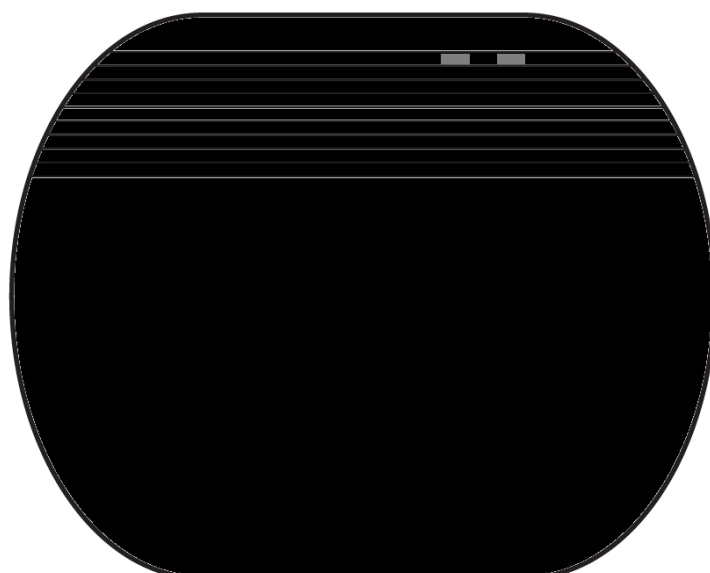
[Home](#) » [Custom MYshade](#) » Custom MYshade ZigBee Bridge Motorized Roller Shade Installation Guide 

Contents

- [1 Custom MYshade ZigBee Bridge Motorized Roller Shade](#)
- [2 Product Information](#)
- [3 Product Usage Instructions](#)
- [4 FAQ](#)
- [5 Product Introduction](#)
- [6 Factory Reset](#)
- [7 FCC statement](#)
- [8 Documents / Resources](#)
 - [8.1 References](#)
- [9 Related Posts](#)

Custom MYshade

Custom MYshade ZigBee Bridge Motorized Roller Shade



Product Information

Specifications:

- ZigBee Bridge
- Converts WiFi into ZigBee
- Allows control of ZigBee devices
- Enables remote on/off control
- Supports scheduling
- Allows family control

Product Usage Instructions

Power on the device: When powering on the device for the first time, it will enter the quick pairing mode (Touch). The WiFi LED indicator will flash two short and one long flashes in a cycle. Note that the device will exit the quick pairing mode if not paired within 3 minutes.

1. Press and hold the pairing button for about 5 seconds.
2. Release the button when the WiFi LED indicator changes in a cycle of two short and one long flashes.

Resetting the device: To reset the device, press and hold the pairing button for approximately 5 seconds until the WiFi LED indicator flashes in a cycle of two short flashes followed by one long flash. Release the button to complete the reset process. After the reset, the device will enter the quick pairing mode (Touch).

Changing the WiFi network: To change the WiFi network, it is recommended to reset the device to factory defaults and then reconnect to the new network.

Adding a blind to the ZB Bridge-01: Use a pin or ballpoint pen to press and hold the motor settings button (P1) for 6 seconds until the motor rotates up and down twice. Release the motor settings button (P1), and the buzzer will beep twice, indicating that the device has entered pairing mode.

Power Switch

The device has a power switch for turning it on/off. Charging Port P1: This port is used for charging the device. Using the Gateway: The gateway ZB Bridge-01 with ZigBee protocol allows remote control of smart blinds, turning them on/off, scheduling power on/off, and creating smart scenes.

FAQ

To check the FAQ section on eWeLink:

1. Locate the icon on the eWeLink application and tap it.
2. From the drop-down menu that appears, select the FAQ option.
3. The FAQ section will be displayed, allowing you to browse through a list of frequently asked questions and their corresponding answers.

Adding a ZigBee Bridge:

To add a ZigBee Bridge, follow these instructions:

1. Connect your phone to a 2.4 GHz WiFi network.
2. Turn on Bluetooth.
3. Tap the + button and select Bluetooth Pairing.
4. Follow the prompts on the App to complete the setup.

Adding a ZigBee sub-device to the ZigBee Bridge:

To add a ZigBee sub-device to the ZigBee Bridge, follow these instructions:

1. Set the ZigBee Bridge to pairing mode before adding the sub-device.
2. Tap the + button and pair the sub-device with the ZigBee Bridge.

Please note that the ZigBee Bridge can currently support up to 32 sub-devices. However, more sub-devices will be supported in the future.

Checking third-party platform compatibility:

Open the device and tap the button on the upper right to check how many third-party platforms your device can link to.

FAQ

Q: How many sub-devices can the ZigBee Bridge support?

A: The ZigBee Bridge can currently support up to 32 sub-devices. However, more sub-devices will be supported in the future.

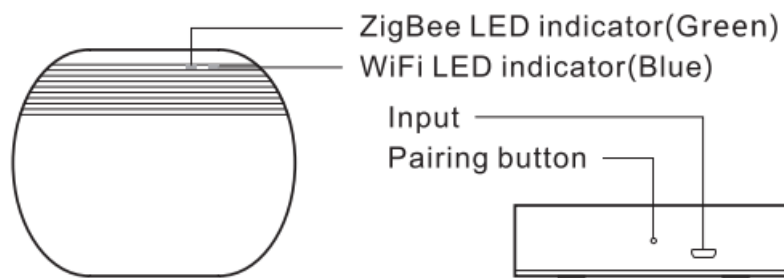
Specifications

Model	ZBBridge-01
Input	5V === 1A
Wireless connections	IEEE 802.11 b/g/n 2.4GHz , ZigBee 3.0
Operating systems	Android 4.1 & iOS 9.0 or higher
Working temperature	-10°C~40°C
Material	PC
Dimension	76×61×20mm

Features

The ZigBee Bridge provided with this product enables you to control various ZigBee devices by converting WiFi into ZigBee. With this feature, you can easily turn connected ZigBee devices on/off remotely, set schedules for turning them on/off, and even allow your family to control them together.

Product Introduction

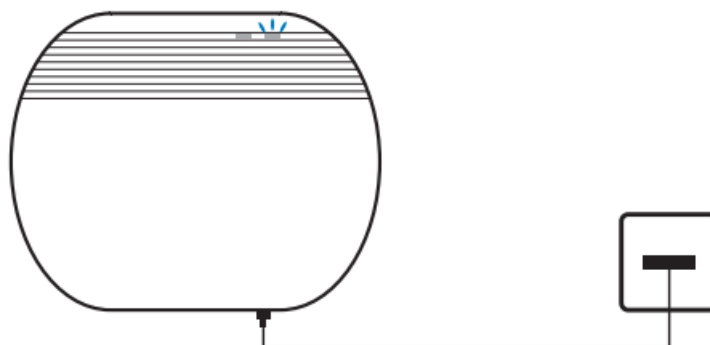


Operating Instruction

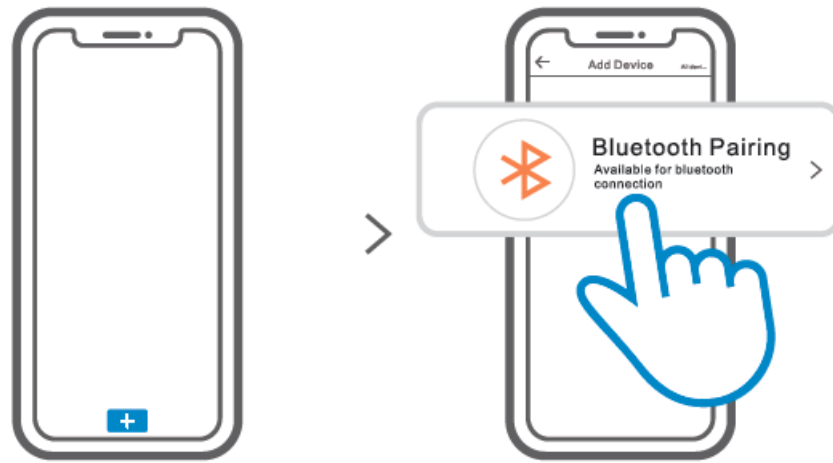
1 Download the App



2 Power on the device



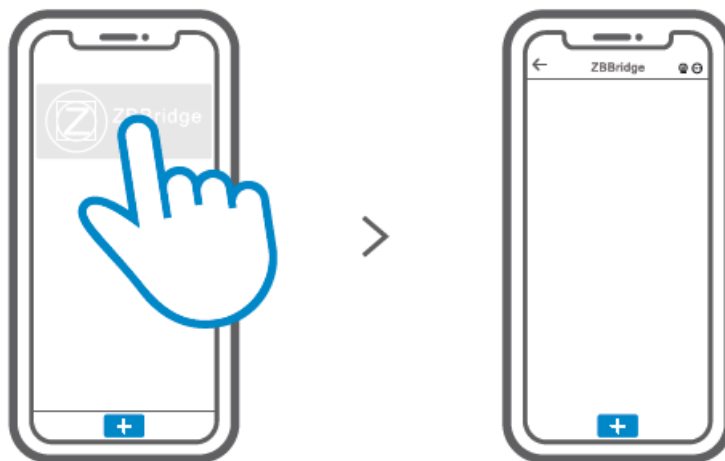
3 Adding a ZigBee Bridge



To add a ZigBee Bridge, please follow the instructions below:

- Connect your phone to a 2.4 GHz WiFi network.
- Turn on Bluetooth.
- Tap the “+” button and select “Bluetooth Pairing”.
- Follow the prompts on the App to complete the setup.

Adding a ZigBee sub-device to the ZigBee Bridge



To add a ZigBee sub-device to the ZigBee Bridge, please follow the instructions:

- Set the ZigBee Bridge to pairing mode before adding the sub-device.
- Tap the “+” button and pair the sub-device with the ZigBee Bridge

Please note that the ZigBee Bridge can currently support up to 32 sub-devices. However, more sub-devices will be supported in the future.

LED Indicator Status Instruction

Quick Pairing Mode:	Blue LED will flash once long and twice short.
Compatible Pairing Mode (AP):	Blue LED will flash quickly.
Device Connected Successfully:	Blue LED will remain on.
Unable to Discover Router:	Blue LED will flash quickly once.
Failed to Connect to WiFi	Blue LED will flash quickly twice after connecting to the router.
Upgrading	Blue LED will flash quickly 3 times.
Sub-device Deleting Prompt:	Green LED will flash twice.
Searching and Adding:	Green LED will flashes slowly.

Compatible Pairing Mode (AP)

If you fail to enter Quick Pairing Mode (Touch), please try “Compatible Pairing Mode (AP)” to pair.

Long press the pairing button for 5 seconds until the WiFi LED indicator changes in the cycle of two short flashes and one long flash, and then release.

Then, long press the pairing button again for 5 seconds until the WiFi LED indicator flashes quickly. This indicates that the device has entered the “Compatible Pairing Mode (AP).”

- Tap the “+” button on the app and select “Compatible Pairing Delete single sub-device on APP Mode (AP)” via the App.

- For the Android system: enter the WiFi password and tap “Next”. Wait patiently until pairing completes.
- For iOS system: select the WiFi SSID with ITEAD-***** and enter the password 12345678. Go back to the eWeLink app and tap “Next”. Wait patiently until pairing completes.

Deleting ZigBee sub-devices



Long press the pairing button for 10 seconds until the ZigBee LED indicator flashes twice. This indicates that all paired sub-devices have been deleted successfully.

Delete single sub-device on APP

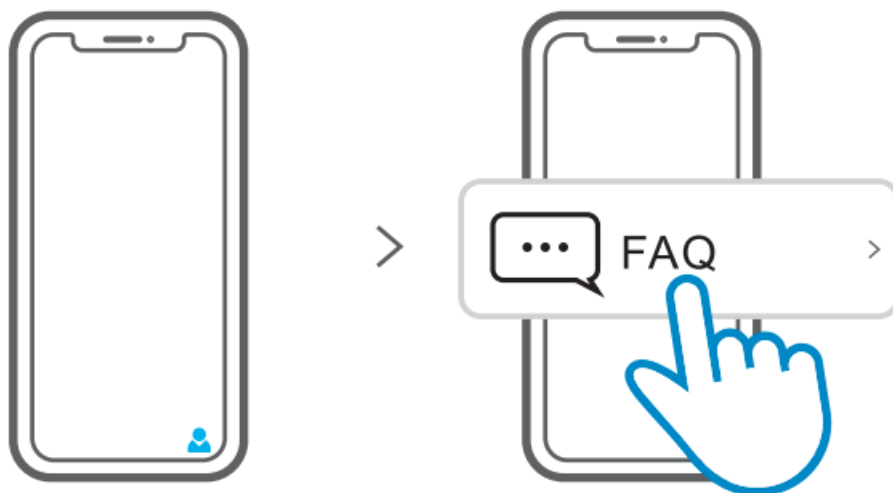
Factory Reset



To reset the device, press and hold the pairing button for approximately 5 seconds until the WiFi LED indicator flashes in a cycle of two short flashes followed by one long flash, then release the button to complete the reset process. After the reset, the device will enter the quick pairing mode (Touch).

To change the WiFi network, it is recommended to reset the device to factory defaults and then reconnect to the new network.

Common Problems

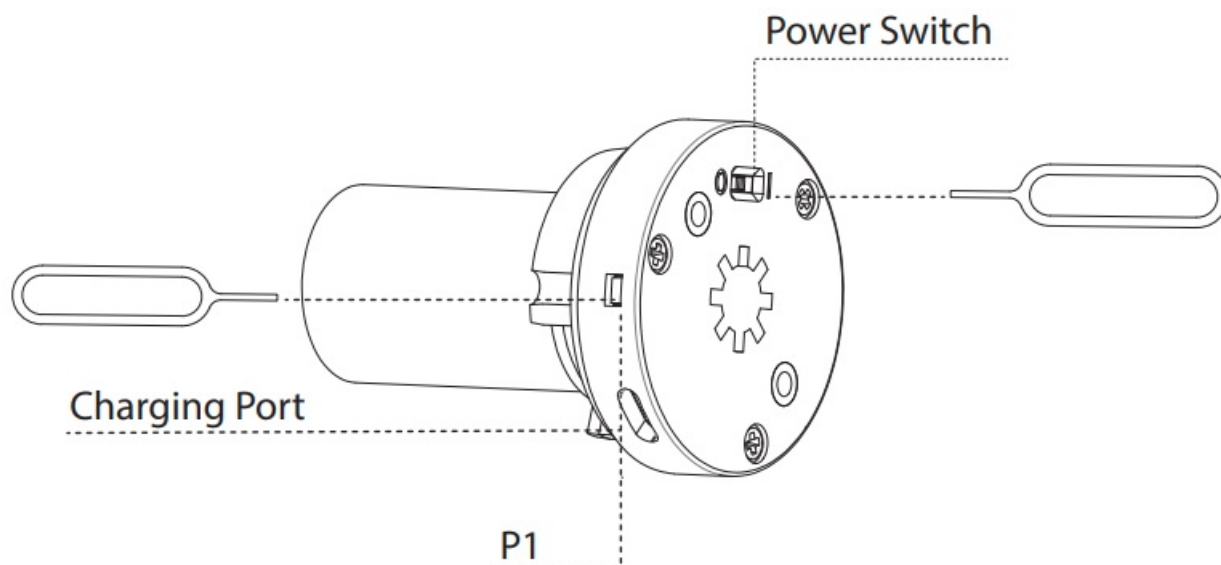


To check the FAQ section on eWeLink, you need to follow these instructions:

- Locate the ” ” icon on the eWeLink application and tap it.
- From the drop-down menu that appears, select the “FAQ” option.

- The FAQ section will then be displayed, allowing you to browse through a list of frequently asked questions and their corresponding answers.

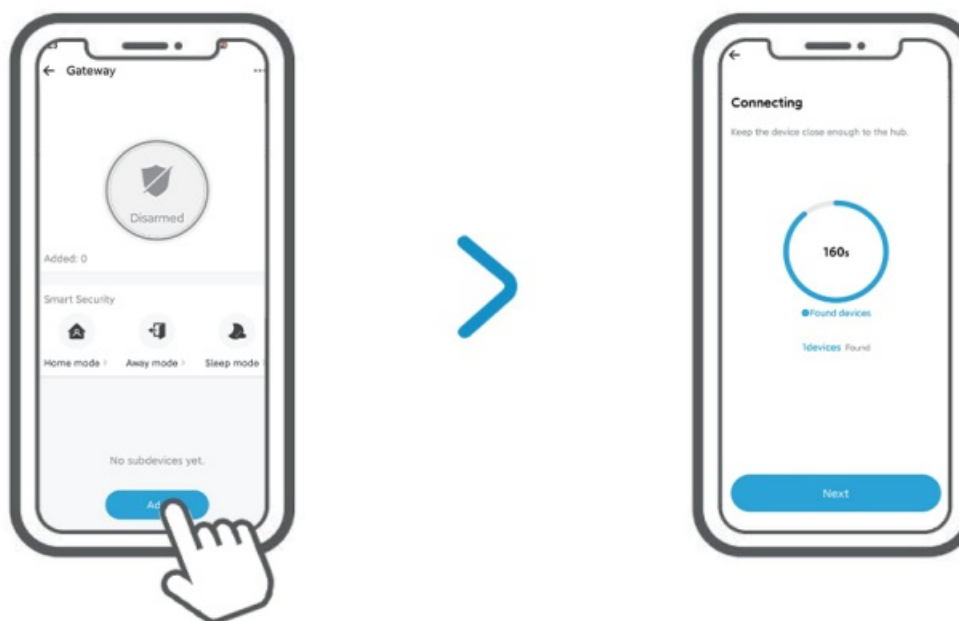
Add the blind to the ZB Bridge-01



Use a pin or ballpoint pen to press and hold the motor settings button (P1) for 6 seconds until the motor rotates twice rotate up and down twice each. Release the motor settings button (P1), and the buzzer will beep twice while the red LED flashes for 60 seconds, indicating that the device has entered pairing mode.

Note that the device will exit pairing mode if you don't operate it within 1 minute.

Click on this device on your app :





Remote Control



Single/Countdown
Timing



Voice Control



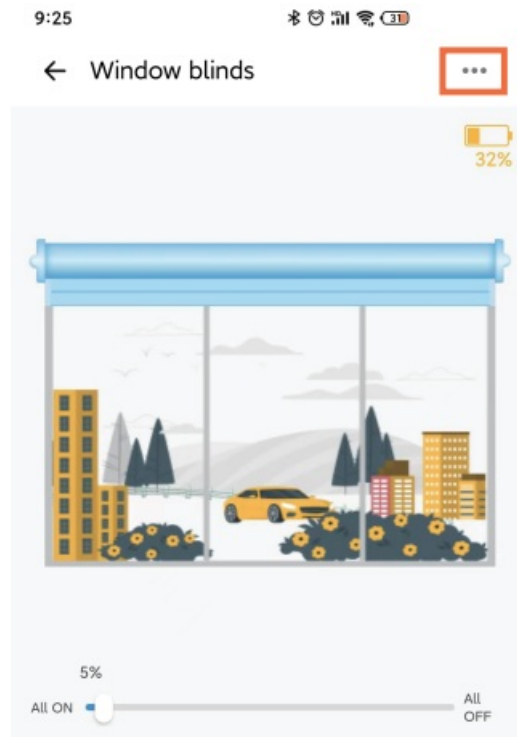
Share Control



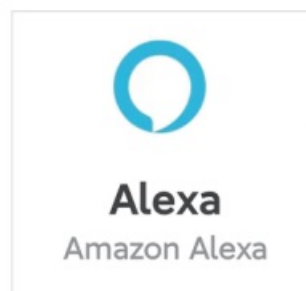
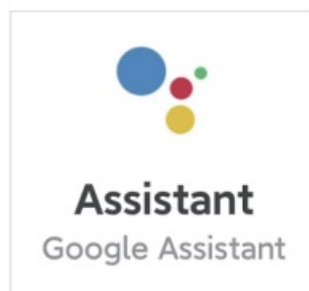
Smart Scene

The gateway ZB Bridge-01 with ZigBee protocol allows you to control your smart blinds remotely, turn it on/off, schedule it to power on/off, and create smart scenes that will trigger the blinds.

Check how many third-party platforms your device can link to

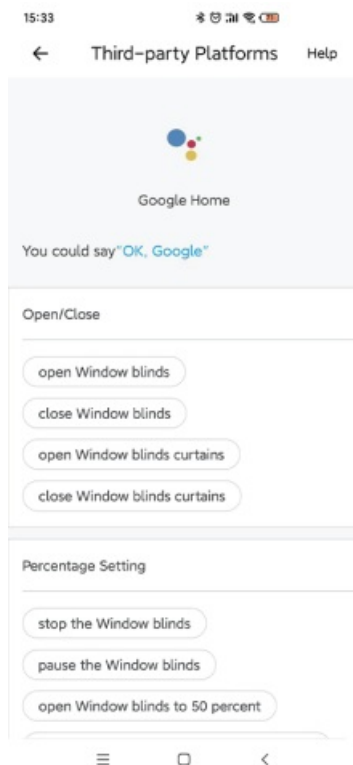
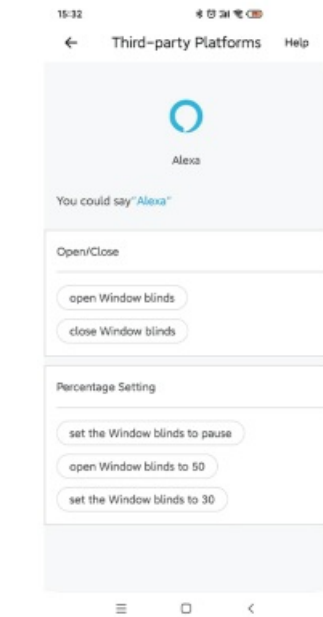


Step 1. Open the device and tap the button on the upper right.



Step 2. Locate and select the “third-party platforms” option within the device application. Choose the platforms

you want to link to your device.



Step 3. Tap the “Link Now” button to link the selected platforms to your device.

FCC statement

Changes or modifications not expressly approved by the party responsible for compliance could avoid the user’s authority to operate the equipment. This device complies with part 15 of the FCC Rules. Operation is subject to the following two conditions:(1)This device may not cause harmful interference, and (2) this device must accept any interference received, including interference that may cause undesired operation.

FCC Radiation Exposure Statement :

This equipment complies with FCC radiation exposure limits set forth for an uncontrolled environment. This


transmitter must not be co-located or operating in conjunction with any other antenna or transmitter

Note :

This equipment has been tested and found to comply with the limits for a Class B digital device, pursuant to part 15 of the FCC Rules. These limits are designed to provide reasonable protection against harmful interference in a residential installation. This equipment generates, uses and can radiate radio frequency energy and, if not installed and used in accordance with the instructions , may cause harmful interference to radio communications. However, there is no guarantee that interference will not occur in a particular installation.If this equipment does cause harmful interference to radio or television reception, which can be determined by turning the equipment off and on , the user is encouraged to try to correct the interference by one or more of the following measures

- -Reorient or relocate the receiving antenna
 - – Increase the separation between the equipment and receiver.
 - – Connect the equipment to an outlet on a circuit different from that to which the receiver is connected
 - -Consult the dealer or an experienced radio / TV technician for help
-

Documents / Resources

	Custom MYshade ZigBee Bridge Motorized Roller Shade [pdf] Installation Guide ZigBee Bridge Motorized Roller Shade, ZigBee Bridge, Motorized Roller Shade, Roller Shade
---	---

References

- [User Manual](#)