



## Custom Dynamics PG-RG-B Road Glide ProGLOW LED Headlamp Instruction Manual

[Home](#) » [Custom Dynamics](#) » Custom Dynamics PG-RG-B Road Glide ProGLOW LED Headlamp Instruction Manual 

### Contents

- [1 Custom Dynamics PG-RG-B Road Glide ProGLOW LED Headlamp](#)
- [2 Package Contents](#)
- [3 Installation](#)
- [4 Installation Instructions](#)
- [5 Documents / Resources](#)
- [6 Related Posts](#)



**Custom Dynamics PG-RG-B Road Glide ProGLOW LED Headlamp**



We thank you for purchasing the Custom Dynamics® Road Glide ProGLOW™ LED headlamp! Our products utilize the latest technology and high quality components to ensure you the most reliable service. We offer one of the best warranty programs in the industry and we back our products with excellent customer support, if you have questions before or during installation of this product please call Custom Dynamics® at 1(800) 382-1388.

Part Number: PG-RG-B, PG-RG-C

### Package Contents

- Road Glide ProGLOW™ LED Headlamp (1)
- PG-Y-59 Harness (1)
- Instructions

**Fits:** 2015-2022 Harley-Davidson® Road Glide (FLTRX), Road Glide Special (FLTRXS), Road Glide ST (FLTRXST), Road Glide Limited (FLTRK), Road Glide Ultra (FLTRU), Road Glide CVO (FLTRXSE), Road Glide Ultra CVO (FLTRUSE) and Road Glide Limited CVO (FLTRKSE)

**Note:** Requires ProGLOW™ Bluetooth Controller (sold separately) and ProGLOW™ App download for control of color changing double x pattern.

### ATTENTION

Please read all Information below before Installation

**Important:** Due to the increased light output from this unit, it is recommended you take the vehicle to a dealer to have the headlamp properly adjusted. Weight and tire pressure can affect the position of the light.

**Warning:** To prevent possible electrical shock, disconnect the negative battery terminal before installing this product.

**Important:** Make all wiring connections with the power OFF to prevent damage to the ProGLOW™ Headlight and/or the ProGLOW™ Bluetooth Controller.

## Installation

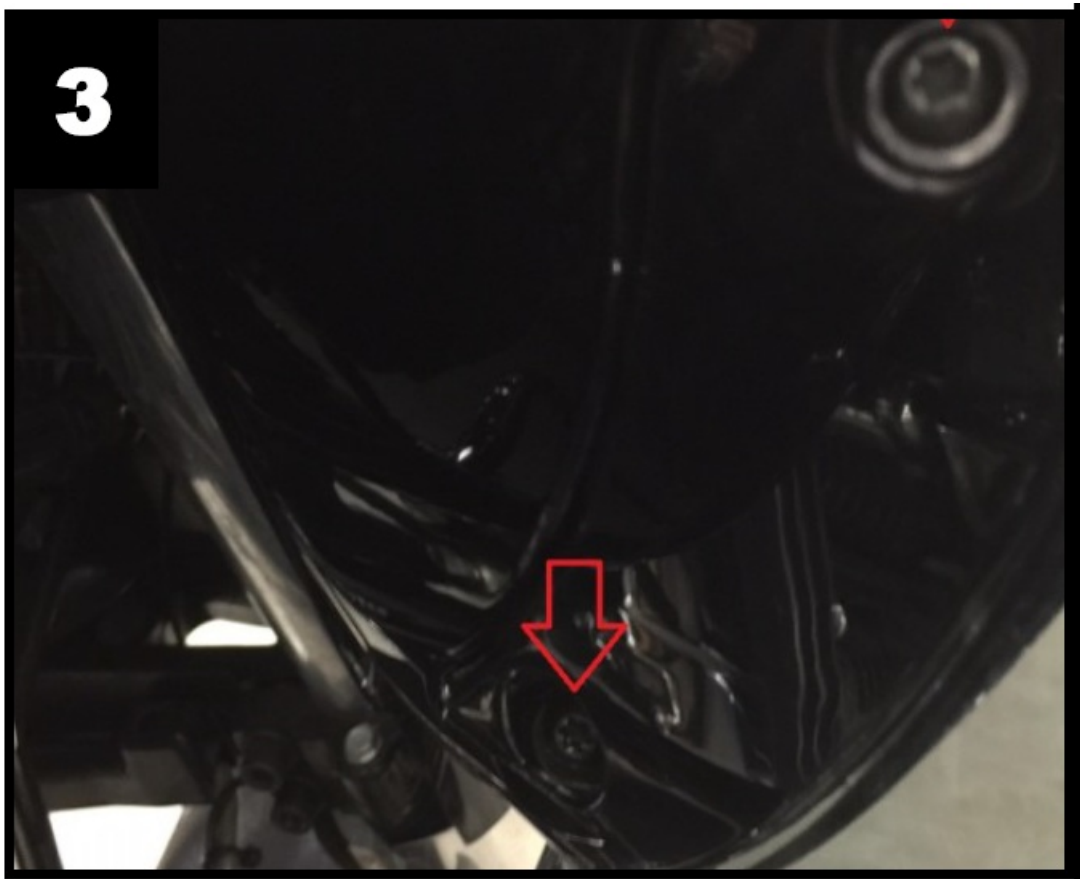
1. Remove the 4 stock windshield bolts and remove the windshield. (Photo 1)



2. Remove factory vent by pulling straight up on the vent. The vent comes snapped in place.
3. Locate and unplug the left and right side 3 pin turn signal harness. (Photo 2)



4. Locate and remove the lower T-25 screw below each glove box on the inner fairing that fasten the wind deflectors and the outer fairing to the inner fairing. (Photo 3)

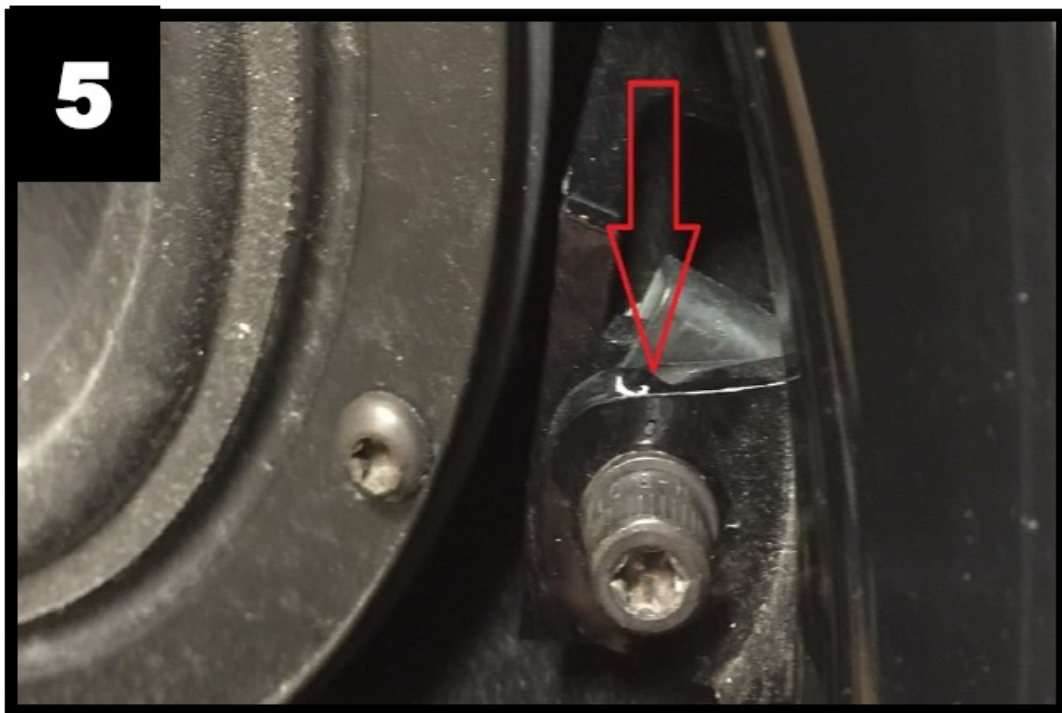


5. Remove both left and right speaker grilles on the inner fairing by pushing upward with your hand from the inside of the fairing.
6. Remove the 3/16" socket Allen head bolts from the outside of each turn signal housing. (Photo 4)

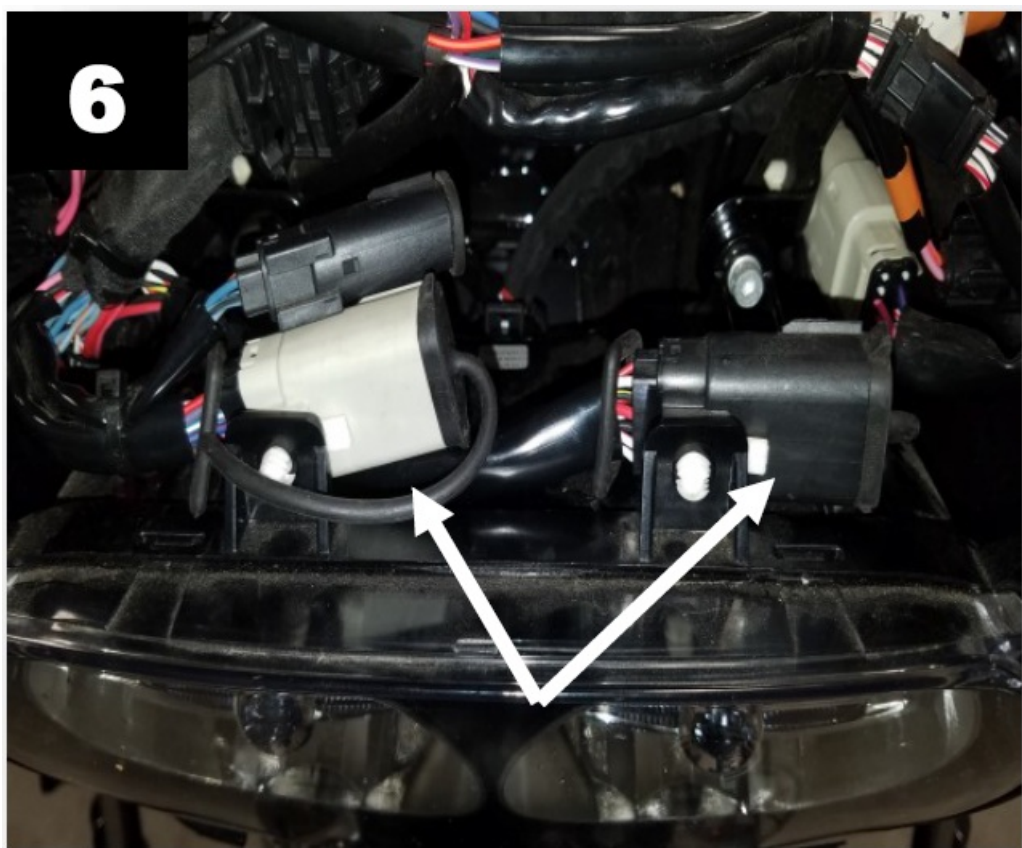


7. Once the speaker grilles are removed, locate and remove the T-27 torx bolts in each corner of the speaker housing. Once the bolts are removed the outer fairing will be separated from the inner fairing. (Photo 5)

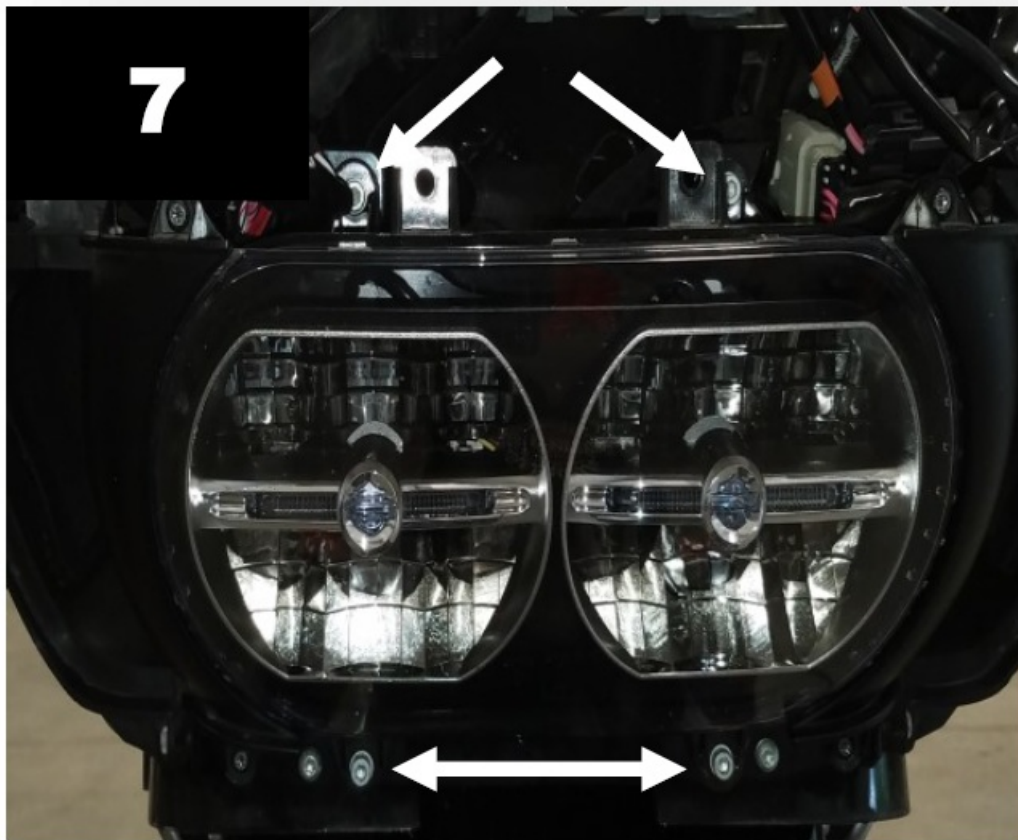




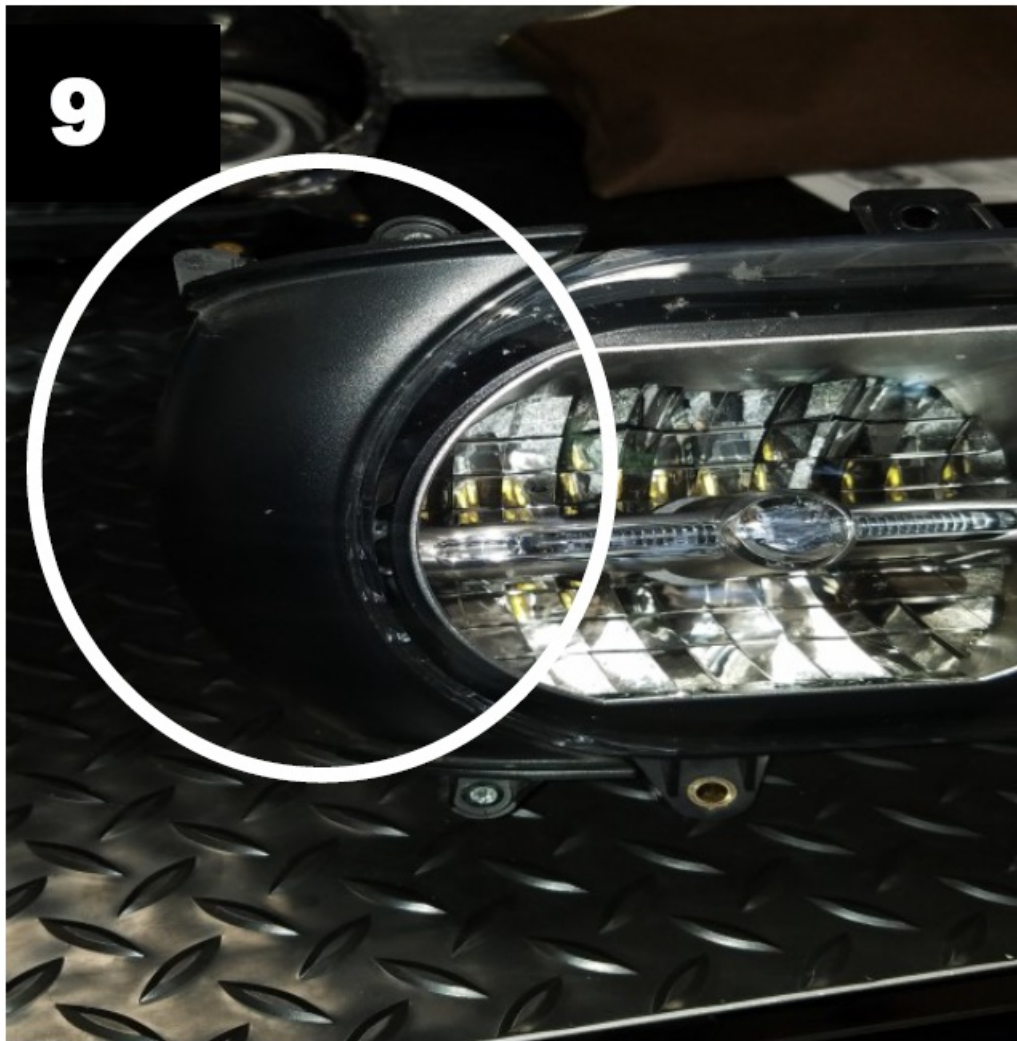
8. Remove the outer fairing (with OEM turn signal housings still attached) and set to the side.
9. Locate the two data plugs that are on the top front of the factory headlamp and press them away from their location. (Photo 6)



10. Locate the (4) 5/16" socket head Allen bolts that secure the factory headlamp to the mounting plate (Photo 7). Remove four screws and unplug headlamp ( Photo 8).

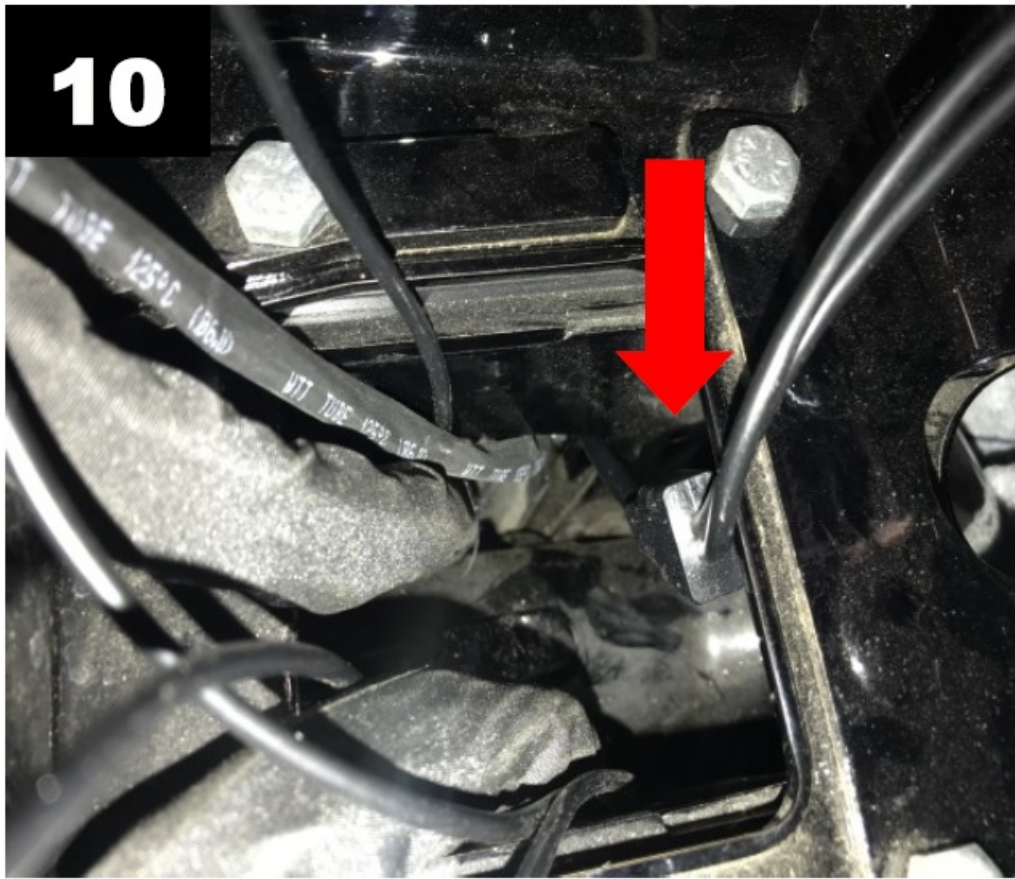


11. Remove the vent deflectors (both sides) from the factory headlamp using a T-25 torx driver. ( Photo 9)



12. Reattach the vent deflectors to your ProGLOW™ LED Headlamp using a T-25 torx driver.
13. Route the PG-Y-59 harness through the mounting plate opening behind the headlight. (Photo 10) Follow the OE wire harness and secure the PG-Y-59 harness with tie wraps. Route under the gas tank to the battery compartment and connect to channel 1 of the ProGLOW™ Controller (sold separately) . Refer to Diagram on Page 3.





14. Plug the ProGLOW™ LED Headlamp into the factory plug and connect both ProGLOW™ halo harnesses to the PG-Y-59 harness. The ProGLOW™ controller (sold separately) power should be off when making these connections.
15. Attach to the factory mounting plate using the original 5/16" socket head Allen bolts.
16. If the Brake Signal Sync is turned on in the App, test the Brake Sync Channel 1 Override to ensure the Headlamp double x pattern does not turn Red when the Brake is applied (Photo 11)





## Brake signal sync

If selected, all of the zones will turn red and brighten when the brake is applied



## Channel 1 Override

If selected, Channel 1 will remain off when brake is applied



17. Test the ProGLOW portion and the Hi/Low of the headlamp for proper operation before reinstalling the outer fairing. Reinstall the outer fairing using the original hardware from steps 4 through 7.
18. Reinstall speaker grilles by applying light pressure. They should snap into place.
19. Reinstall factory vent by snapping into place.
20. Reinstall windshield using original hardware.
21. Test all lighting for proper operation
22. Aim headlight using a # 2 screw driver. Adjustment screw is located underneath the headlight and can be accessed with the outer fairing installed.

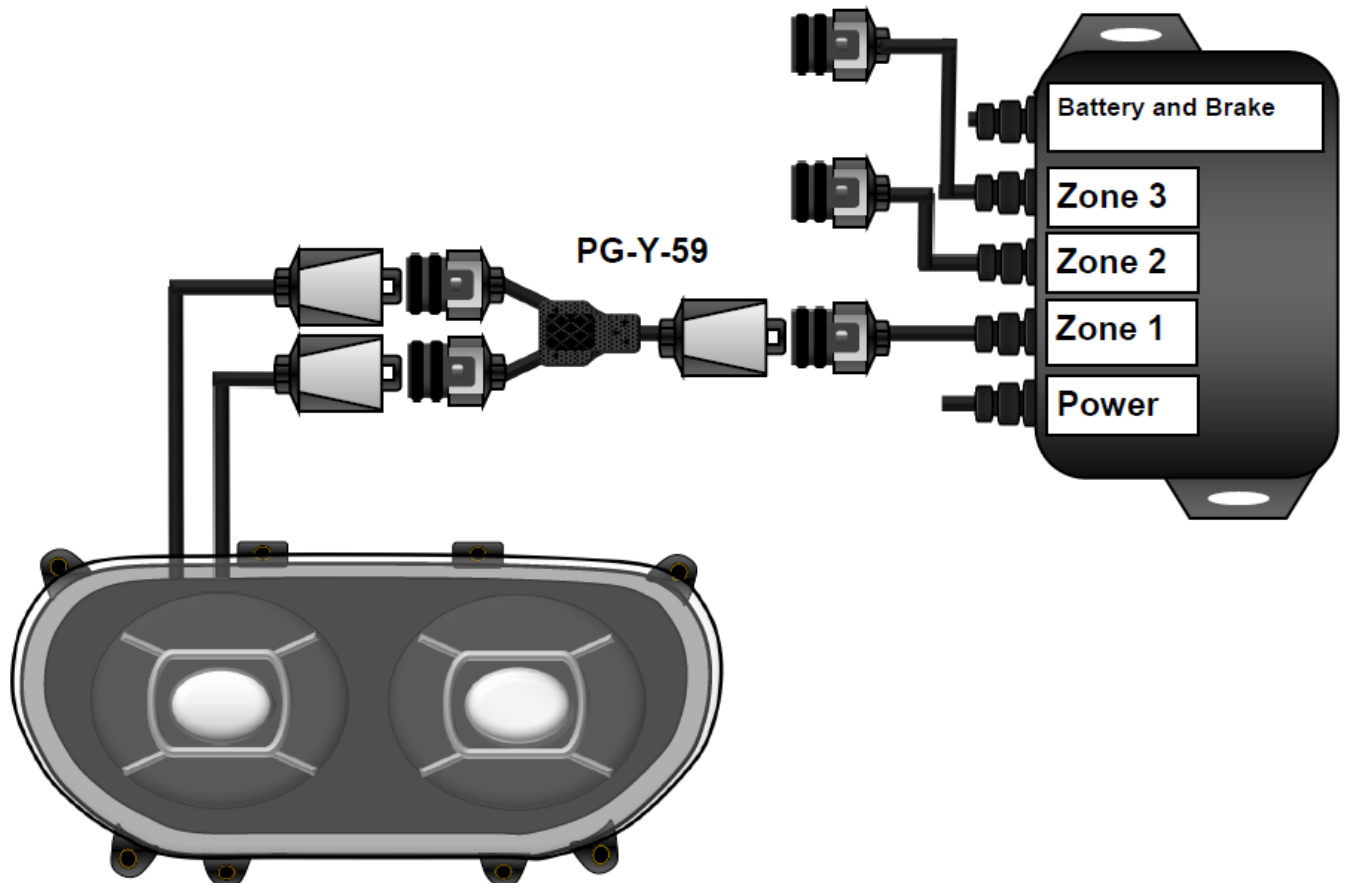
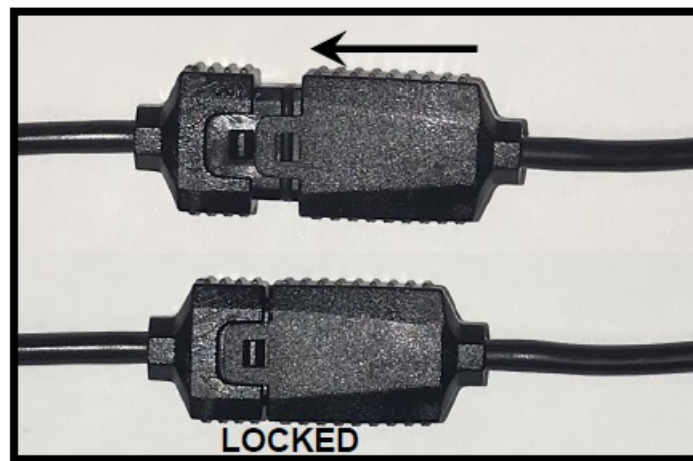
## Installation Instructions

Scan QR code for detailed instructions on aiming your headlight.



### NOTE

Use caution when connecting the mating ProGLOW™ accessory connectors, confirm the mating connector is connected correctly or damage will occur to the lighting accessories. The locking tab should slide onto the lock and lock into position. See Photos below.



Questions? Call us at: 1 (800) 382-1388 M-TH 8:30AM-5:30PM / FR 9:30AM-5:30PM EST

## Documents / Resources

	<p><a href="#">Custom Dynamics PG-RG-B Road Glide ProGLOW LED Headlamp</a> [pdf] Instruction Manual PG-RG-B, PG-RG-C, PG-RG-B Road Glide ProGLOW LED Headlamp, Road Glide ProGLOW LED Headlamp, ProGLOW LED Headlamp, LED Headlamp, Headlamp</p>
--	--