


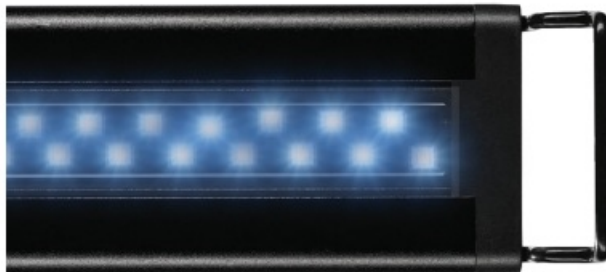


current ColorPLUS+ Smart LED Light Installation Guide

[Home](#) » [current](#) » current ColorPLUS+ Smart LED Light Installation Guide 



Smart LED Light I nstallation Guide



Works with **AquaticVita app**



only supports 2.4 GHz wifi

Contents

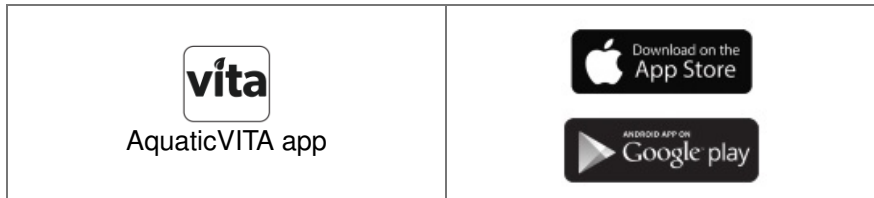
- [1 Getting Started](#)
- [2 Install LED Light](#)
- [3 IMPORTANT SAFETY INSTRUCTIONS](#)
- [4 LIMITED WARRANTY](#)
- [5 Documents / Resources](#)
 - [5.1 References](#)
- [6 Related Posts](#)

Getting Started

WARNING:

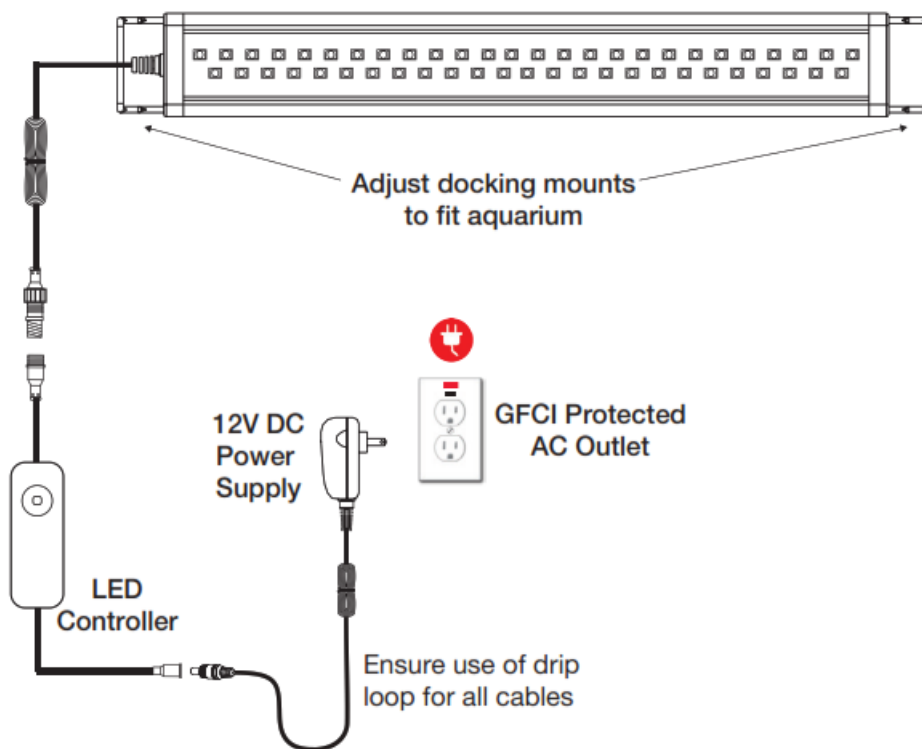
These products may represent a possible shock or fire hazard if improperly installed or attached in any way. Products should be installed in accordance with this install guide, current electrical codes, and/or the current National Electric Code (NEC).

Download the Aquatic VITA app on your smart device



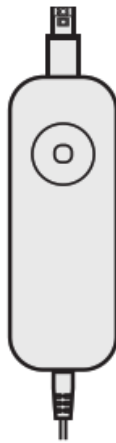
Install LED Light

- Slide adjustable docking legs on each side of the light fixture to match the length of your aquarium.
- Connect the 3-pin plug on the light fixture to the matching 3-pin plug on the LED controller,
- Connect the male DC plug from the power supply to the LED controller.
- Plug the power supply into a GFCI-protected AC outlet ensuring a drip loop is in place.



- Place fixture over glass top of the aquarium and adjust docking mounts as needed to fit tank.
- You are now ready to use the LED light via the inline LED controller.
- To activate smart mobile app features, proceed to steps 4 & 5. When in Smart Wi-Fi pairing mode, the LED light will blink. Note: the light will stop blinking after 3 minutes or when controlled via the inline controller.

LED Controller Button:

**WARNING:**

LED Controller is NOT waterproof. Keep in a dry place away from dripping water or where it may drop into the water.

Main control features:

- Press once (1x) to turn ON, and the light will display the default White color spectrum (all colors 100%).
- Press and hold the button for 3 seconds to turn the light OFF.

*To reset the controller for pairing with the Vita app and mobile device, press and hold the button for 9 seconds the LED light will blink red when ready for pairing and connection.

Manual Scene control:

- Press 2x to display the Sunrise fade scene.
- Press 3x to display the Sunrise fade scene.
- Press 4x to display the Moonlight fade scene.
- Press 5x to display the Rainstorm scene.
- Press 6x to display the Partly Cloudy scene.
- Press 7x to display the Sunset scene.
- press 8x to display the Glow scene.
- Press 9x to display the Stream scene.
- Press 10x to display the Deepwater scene.

Launch and use the Aquatic VITA app to complete the setup.

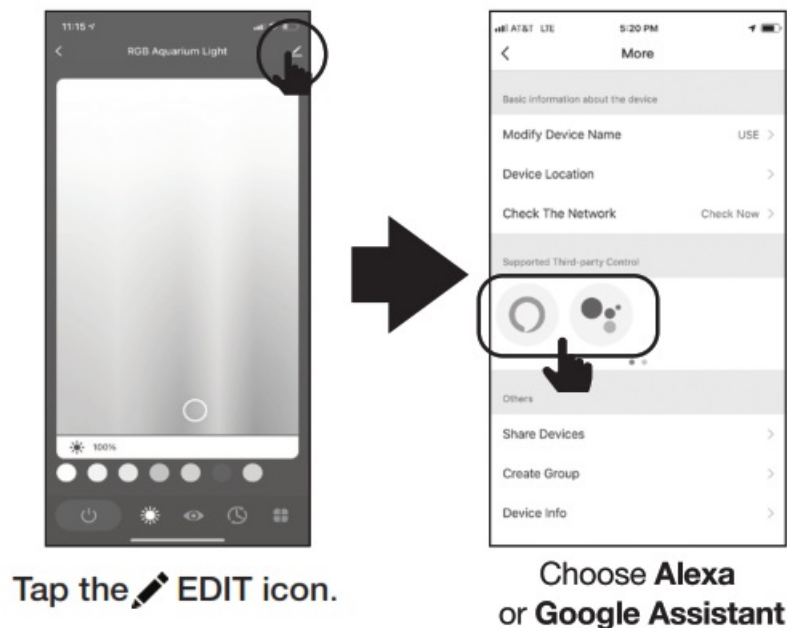
- Open the VITA app.
 - Complete the requested information to create a new account, or sign in to your existing account.
- Tap Add Device or the + sign, then select “ColorPlus Aquarium LED” and confirm. Then enter your Wi-Fi network & password.



The light must be rapidly blinking to connect. If not already blinking, press and hold the button on the controller for nine seconds to put a light in pairing mode.

Be sure to connect to a 2.4 GHz Wi-Fi network that covers your installation location. LED controller will then pair with your mobile device (this can take 30-60 seconds).

(OPTIONAL) Connect to Alexa or Google Assistant using the in-App guide



TROUBLESHOOTING TIPS CONNECTING TO WI-FI

If you are having difficulty connecting:

- Make sure the Wi-Fi network is a 2.4 GHz network. Smart Strip Light will not connect to a 5 GHz network.
- Test your Wi-Fi network with other devices such as your phone to make sure it is operating properly.
- The Wi-Fi connection may not have good coverage during setup. Try moving the Smart Strip Light closer to your Wi-Fi router.

For more information, check the App User Guide at www.aquaticvita.com for help. Or email us at info@current-usa.com

IMPORTANT SAFETY INSTRUCTIONS

When using electrical products, basic precautions should always be practiced including the following:
READ AND FOLLOW ALL SAFETY INSTRUCTIONS

1. Never attempt repairs yourself, return the device to an authorized repair facility for service or discard it.
2. Carefully examine light after installation and BEFORE plugging it into the GFCI wall outlet. Be sure there is NO water or moisture on the light.
3. Never plug in a wet cord. If a plugged-in light or socket does get wet, DO NOT TOUCH IT. Instead, promptly disconnect the fuse or circuit breaker that supplies power to the light.
4. Never operate a light that is damaged or malfunctioning, discontinue use immediately and return or discard it.
5. This is NOT a toy. Close supervision is required when any appliance is used by or near children.
6. Always unplug the fixture when not in use, before putting on or taking off parts, and before cleaning. Never pull the cord to unplug from GFCI.

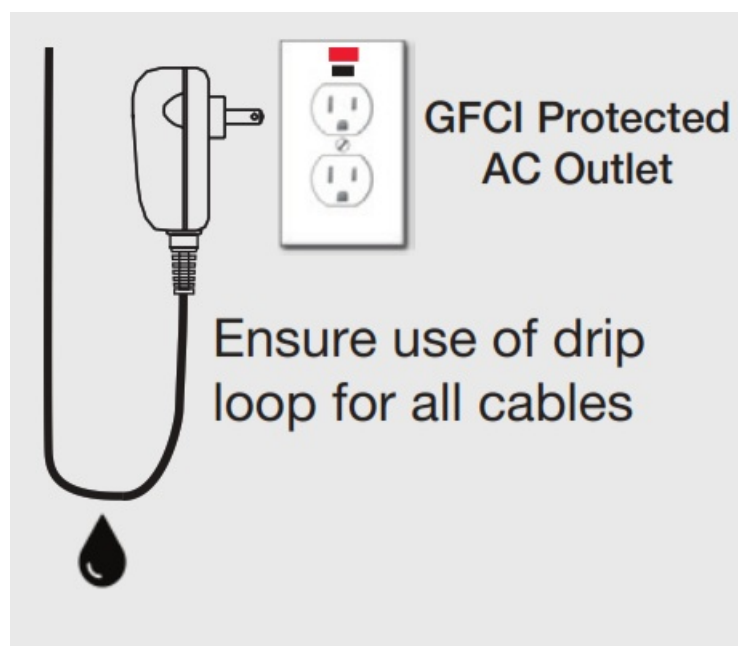
7. Do not use this light for anything other than its intended use.
8. Ensure the light is securely installed before supplying power to the unit.
9. Do not use with an extension cord.
10. Do not look directly into the LEDs.

WARNING: Risk of Electric Shock. Plug device ONLY into a GEC! protected receptacle. If one is not provided, contact a certified electrician for proper installation. **WARNING:** Risk of Electric Shock. Mount the unit at a height greater than 1 foot from the ground surface.

SAVE THESE INSTRUCTIONS

This manual contains Important safety and operating instructions for power units. For more information, see the VITA App User Guide at www.aquaticvita.com or visit www.current-usa.com

WARNING:



Drip Loops should always be used to help prevent water from traveling along the cord and coming into contact with an electrical outlet. Drip loops must always be below the level of the outlet. If the plug or outlet does get wet, DO NOT TOUCH the cord. Disconnect the fuse or circuit breaker that supplies power.

GROUNDING INSTRUCTIONS

This LED system must be powered with the supplied UL/cUL Listed power supply. To avoid possible electric shock, the power supply must be plugged into a GFCI wall outlet that is installed and grounded in accordance with all appropriate codes and ordinances.

LIMITED WARRANTY

Current USA, Inc. warrants this product against defects in materials and workmanship of a period of ONE (1) YEAR from the date of original retail purchase and is not transferable.

Warranty on all Products, including Aquariums, is limited to replacement of the product and does not cover fish loss, personal injury, property loss, or direct, incidental, or consequential damage arising to the use of this product.

Note: Current-USA, Inc. One-Year Limited Warranty does not cover damage caused by the following: improper installation, saltwater corrosion, electrical surges, or modifications. This warranty does not apply if the product has been damaged by accident, abuse, misuse or misapplication or if the product has been modified without the written permission of Current-USA, Inc.; or if any Current-USA, Inc. logos have been removed or defaced.

THE WARRANTY AND REMEDIES SET FORTH ABOVE ARE EXCLUSIVE AND IN LIEU OF ALL OTHERS, WHETHER ORAL OR WRITTEN, EXPRESS OR IMPLIED. CURRENT USA, INC. SPECIFICALLY DISCLAIMS ANY AND ALL IMPLIED WARRANTIES, INCLUDING BUT NOT LIMITED TO LOST PROFITS, DOWNTIME, GOODWILL, DAMAGE TO OR REPLACEMENT OF EQUIPMENT AND PROPERTY, AND ANY COSTS OF RECOVERING ANIMALS, PLANTS, TANKS, OR OTHER AQUARIUM-RELATED ITEMS AND/ OR EQUIPMENT. CURRENT USA, INC. IS NOT RESPONSIBLE FOR SPECIAL, INCIDENTAL, OR CONSEQUENTIAL DAMAGES RESULTING FROM ANY BREACH OF WARRANTY, OR REPLACEMENT OF EQUIPMENT OR PROPERTY, OR ANY COSTS OF RECOVERING OR REPRODUCING ANY EQUIPMENT, ANIMALS OR PLANTS USED OR GROWN WITH CURRENT USA, INC. PRODUCTS. Some jurisdictions do not allow the exclusion or limitation of incidental or consequential damages or exclusions of implied warranties, so the above limitations or exclusions may not apply to you. This warranty gives you specific legal rights, and you may also have other rights that vary from jurisdiction to jurisdiction.

This device Contains a Transmitter
Module FCC I D:2AN DL-CB3S
IC: 23243-CB3S

ELECTRICAL RATINGS:

INPUT: 120-240VAC,50/60HZ

OUTPUT: 12VDC,1A, 24W MAX

Supplier's Declaration of Conformity: 47 CFR § 2.1077 Compliance Information

Responsible Party: Current USA, Inc.

2640 Business Park Dr.

Vista, CA 92081

760-727-7011

Unique Identifier: Models: 9050, 9051, 9052

This device complies with Part 15 of the FCC Rules. Operation is subject to the following two conditions: (1) This device may not cause harmful interference, and (2) this device must accept any interference received, including interference that may cause undesired operation.

Note: This equipment has been tested and found to comply with the limits for a Class B digital device, pursuant to part 15 of the FCC Rules. These limits are designed to provide reasonable protection against harmful interference in a residential installation. This equipment generates, uses and can radiate radio frequency energy and, if not installed and used in accordance with the instructions, may cause harmful interference to radio communications. However, there is no guarantee that interference will not occur in a particular installation. If this equipment does cause harmful interference to radio or television reception, which can be determined by turning the equipment off and on, the user is encouraged to try to correct the interference by one or more of the following measures:

- Reorient or relocate the receiving antenna.
- Increase the separation between the equipment and receiver.
- Connect the equipment into an outlet on a circuit different from that to which the receiver is connected.
- Consult the dealer or an experienced radio/TV technician for help.

Documents / Resources



[current ColorPLUS+ Smart LED Light](#) [pdf] Installation Guide
ColorPLUS, Smart LED Light, ColorPLUS Smart LED Light

References

- [USA Location information - USA.com](#)
- [vita Current USA Aquatic Vita APP Support](#)