



cudy UX03 USB Adapter User Guide

[Home](#) » [cudy](#) » cudy UX03 USB Adapter User Guide 

Contents

- [1 cudy UX03 USB Adapter](#)
- [2 Product Information](#)
- [3 Product Usage Instructions](#)
- [4 Maintenance and Cleaning](#)
- [5 Specifications](#)
- [6 Driver Installation](#)
- [7 WiFi Adapter Mode](#)
- [8 FCC Warning](#)
- [9 Documents / Resources](#)
 - [9.1 References](#)
- [10 Related Posts](#)



cudy UX03 USB Adapter



Product Information

The product is a device that complies with part 15 of the FCC rules. It is designed to operate without causing harmful interference and is capable of accepting any interference received, including interference that may cause undesired operation. The device has been evaluated and meets general RF exposure requirements, allowing it to be used in portable exposure conditions without restriction.

Product Usage Instructions

Safety Precautions

Before using the product, please read and understand the following safety precautions:

- Do not expose the device to excessive heat or direct sunlight.
- Avoid using the device in wet or humid environments.
- Do not drop or subject the device to strong impacts.
- Keep the device away from water and other liquids.
- Only use the device with the provided power adapter and accessories.

Powering On/Off

To power on the device, press and hold the power button located on the device until the indicator light turns on. To power off the device, press and hold the power button again until the indicator light turns off.

Interference Handling

If you experience interference while using the device, try the following steps:

1. Move away from other electronic devices that may be causing interference.
2. Reposition the device to a different location within the area.
3. Ensure that the device is not placed near metal objects or walls that may obstruct the signal.

Maintenance and Cleaning

To ensure optimal performance and longevity of the device, follow these maintenance and cleaning guidelines:

- Regularly wipe the device with a soft, dry cloth to remove dust and debris.
- Avoid using harsh chemicals or abrasive materials that may damage the device’s surface.
- Do not attempt to disassemble or repair the device yourself. Contact customer support for assistance.

Specifications

Compliance	Part 15 of the FCC rules
Interference Handling	Accepts any interference received
RF Exposure	Meets general RF exposure requirements
Power Source	Uses provided power adapter
Operating Conditions	Portable exposure conditions without restriction

FAQ (Frequently Asked Questions)

Can I use the device outdoors?

Yes, the device can be used in portable exposure conditions without any restrictions.

What should I do if the device is not functioning properly?

If you encounter any issues with the device, try resetting it by powering off and on. If the problem persists, contact customer support for further assistance.

Is it safe to use the device near water?

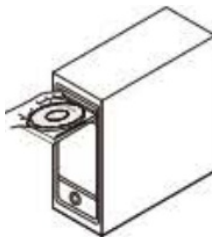
No, it is not recommended to use the device near water or other liquids to prevent any damage or accidents.

Driver Installation

1. Please insert the USB adapter directly into the computer's USB port.




2. Put the CD into the computer drive.




3. Open the driver folder and double-click the installation file "Setup.exe". Click "Next" to finish the installation.



4. After finishing the installation, in the lower right corner of the taskbar, [REALTEK Client Management Software ] appears, indicating the installation succeed.

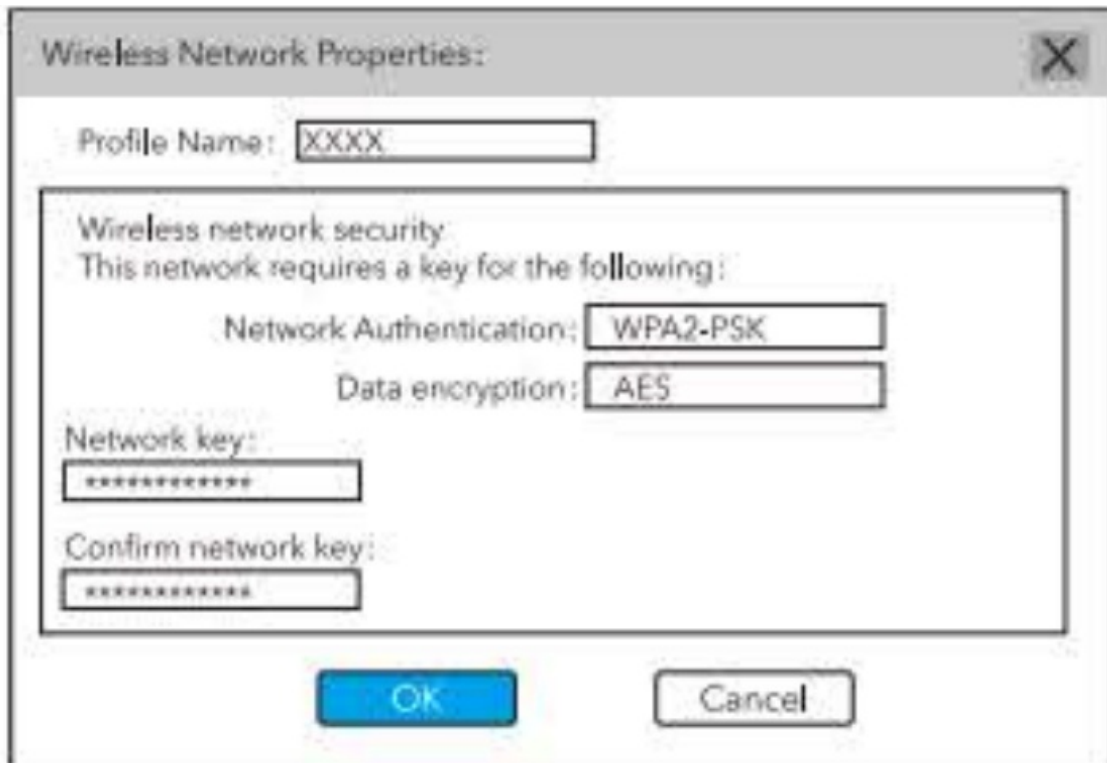


WiFi Adapter Mode

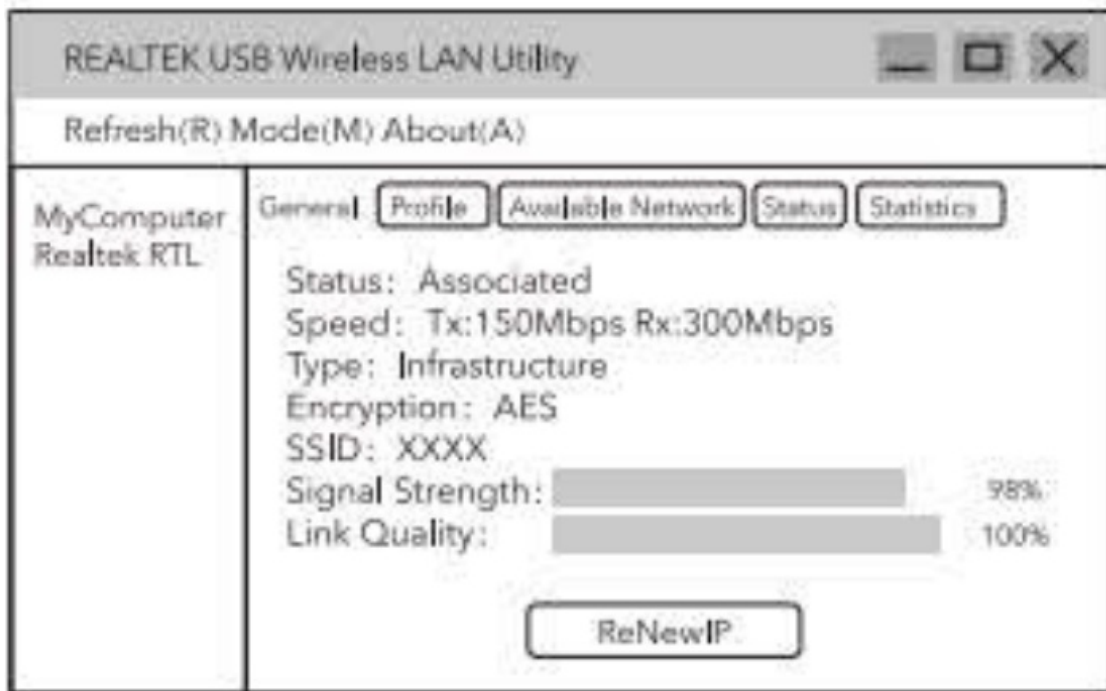
1. Double-click  REALTEK USB Wireless LAN Utility.
2. Click on the upper menu "Available Network", and select the wireless network SSID you want to connect to.



3. Enter the network key, confirm the network key, and click "OK" as shown below:



4. After the connection is successful, the signal strength and link quality are displayed, as shown below:



FCC Warning

This device complies with part 15 of the FCC rules. Operation is subject to the following two conditions:

1. this device may not cause harmful interference, and
2. this device must accept any interference received, including interference that may cause undesired operation.

Changes or modifications not expressly approved by the party responsible for compliance could void the user's authority to operate the equipment.


NOTE: This equipment has been tested and found to comply with the limits for a Class B digital device, pursuant to part 15 of the FCC Rules. These limits are designed to provide reasonable protection against harmful interference in a residential installation. This equipment generates uses and can radiate radio frequency energy and, if not installed and used in accordance with the instructions, may cause harmful interference to radio communications. However, there is no guarantee that interference will not occur in a particular installation. If this equipment does cause harmful interference to radio or television reception, which can be determined by turning the equipment off and on, the user is encouraged to try to correct the interference by one or more of the following measures:

- Reorient or relocate the receiving antenna.
- Increase the separation between the equipment and the receiver.
- Connect the equipment to an outlet on a circuit different from that to which the receiver is connected.
- Consult the dealer or an experienced radio/TV technician for help.

Radiation Exposure Statement

The device has been evaluated to meet general RF exposure requirements. The device can be used in portable exposure conditions without restriction.

Documents / Resources

	cudy UX03 USB Adapter [pdf] User Guide 2APRGUX03, 2APRGUX03, UX03, UX03 USB Adapter, USB Adapter, Adapter
---	--

References

- [User Manual](#)