

cudy

**PE25 2.5 Gbps
PCI-E Ethernet
Adapter**



cudy PE25 2.5 Gbps PCI-E Ethernet Adapter Installation Guide

[Home](#) » [cudy](#) » cudy PE25 2.5 Gbps PCI-E Ethernet Adapter Installation Guide 

Contents

- [1 cudy PE25 2.5 Gbps PCI-E Ethernet Adapter](#)
- [2 Product Information](#)
- [3 Product Usage Instructions](#)
- [4 FAQ](#)
- [5 Installation Instruction](#)
- [6 Safety Information](#)
- [7 FCC Statement](#)
- [8 Documents / Resources](#)
 - [8.1 References](#)

cudy

cudy PE25 2.5 Gbps PCI-E Ethernet Adapter



Product Information

Specifications:

- Model: PE25
- Interface: PCI Express
- Connectivity: Ethernet
- Manufacturer: Cudy

Product Usage Instructions

Installation:

1. Unplug the power cable and remove the case panel.
2. Insert the adapter into an available PCI-E slot and secure it with the provided screw.
3. Assemble the case panel and power on your computer.
4. Plug the Ethernet cable and connect it to your router or switch.

Network Connection:

Check if the computer is connected to the network. If yes, you can enjoy the Internet directly. If not, follow these steps:

1. Download and install the driver by scanning the QR code or visiting <https://www.cudy.com/pe25>

Troubleshooting:

If the adapter is not detected, follow these steps:

1. Check the insertion of the adapter.
2. Try inserting the adapter into another PCI-E slot.
3. Contact support@cudy.com for further assistance.

FAQ

Q: What should I do if the adapter is not detected?

A: If the adapter is not detected, follow these steps:

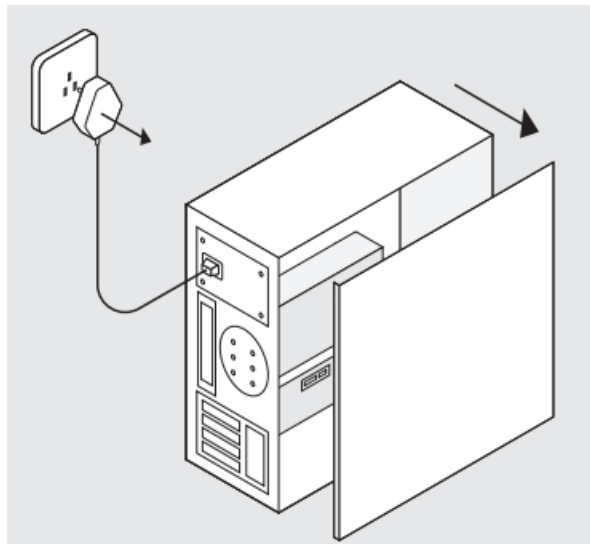
1. Check the insertion of the adapter.
2. Try inserting the adapter into another PCI-E slot.
3. Contact support@cudy.com for further assistance.

Q: How do I connect to the network after installation?

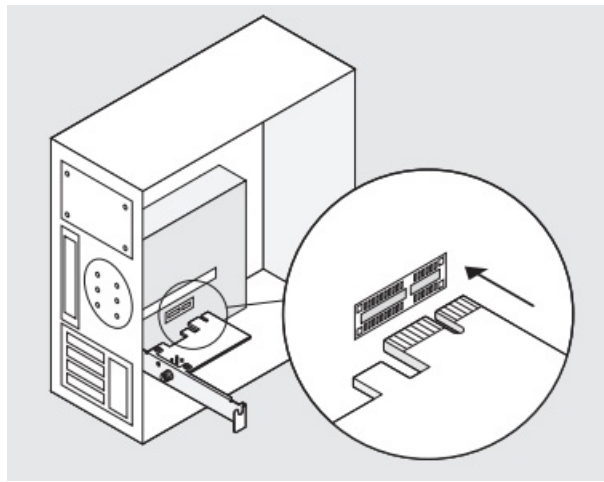
A: After installation, plug in the Ethernet cable and connect it to your router or switch. Ensure your computer is connected to the network to access the Internet.

Installation Instruction

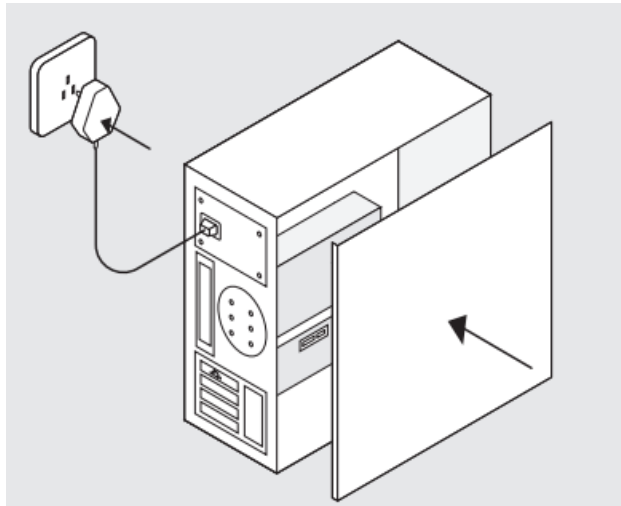
1. Unplug power cable and remove case panel.



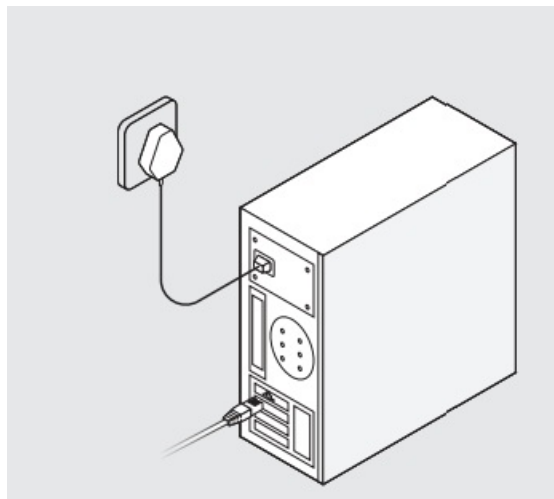
2. Insert the adapter into an available PCI-E slot and secure it with the provided screw



3. Assemble the case panel and power on your computer

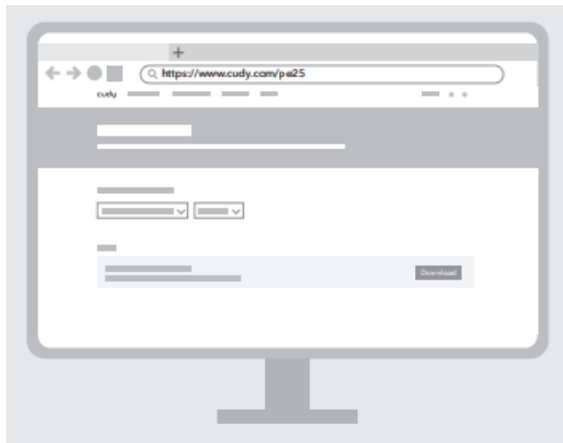


4. Plug the ethernet cable and connect to your router or switch.



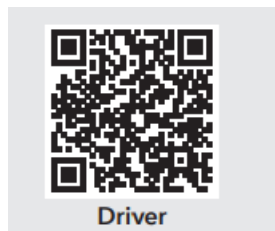
5. Check if the computer is connected to the network.

- If yes, enjoy the Internet directly;
- If not, download and install the driver by scanning the QR code or enter h <https://www.cudy.com/pe25> in your browser

**Note:**

If the adapter is not detected:

1. Check the insertion.
2. Try another slot.
3. Contact support@cudy.com

**Safety Information**

- Keep the device away from water, fire, humidity or hot environments.
- Do not attempt to disassemble, repair, or modify the device.
- Do not use the device where wireless devices are not allowed.

Please read and follow the above safety information when operating the device. We cannot guarantee that no accidents or damage will occur due to improper use of the device. Please use this product with care and operate at your own risk.

Canadian Compliance Statement

This device complies with Industry Canada license-exempt RSS standard(s). Operation is subject to the following two conditions:

1. This device may not cause interference.
2. This device must accept any interference, including interference that may cause undesired operation of the device.

WEEE

According to the EU Directive on Waste Electrical and Electronic Equipment (WEEE – 2012/19 / EU), this product

must not be disposed of as normal household waste. Instead, they should be returned to the place of purchase or taken to a public collection point for recyclable waste. By ensuring this product is disposed of correctly, you will help prevent potential negative consequences for the environment and human health, which could otherwise be caused by inappropriate waste handling of this product. For more information, please contact your local authority or the nearest collection point. Improper disposal of this type of waste may result in penalties according to national

EU Declaration of Conformity

Cudy hereby declares that the device is in compliance with the essential requirements and other relevant provisions of Directive 2014/30/EU, Directive 2014/35/EU, Directive 2011/65/EU, Directive (EU) 2015/863.

The original EU declaration of conformity can be found at

- <http://www.cudy.com/ce>

FCC Statement

FCC compliance information statement

This equipment has been tested and found to comply with the limits for a Class B digital device, pursuant to part 15 of the FCC Rules. These limits are designed to provide reasonable protection against harmful interference in a residential installation. This equipment generates, uses and can radiate radio frequency energy and, if not installed and used in accordance with the instructions, may cause harmful interference to radio communications. However, there is no guarantee that interference will not occur in a particular installation. If this equipment does cause harmful interference to radio or television reception, which can be determined by turning the equipment off and on, the user is encouraged to try to correct the interference by one or more of the following measures:

- Reorient or relocate the receiving antenna.
- Increase the separation between the equipment and receiver.
- Connect the equipment into an outlet on a circuit different from that to which the receiver is connected.
- Consult the dealer or an experienced radio/TV technician for help.

This device complies with part 15 of the FCC Rules. Operation is subject to the following two conditions:

1. This device may not cause harmful interference.
2. This device must accept any interference received, including interference that may cause undesired operation.

- www.cudy.com
- support@cudy.com

Documents / Resources



[cudy PE25 2.5 Gbps PCI-E Ethernet Adapter](#) [pdf] Installation Guide
PE25 2.0, PE25 2.5 Gbps PCI-E Ethernet Adapter, PE25, 2.5 Gbps PCI-E Ethernet Adapter, PC I-E Ethernet Adapter, Ethernet Adapter, Adapter

References

- [!\[\]\(fd4127b9e2af37bd6ea0fa06afa8e6d8_img.jpg\) **Cudy, Your Home and Business Networking Solutions Provider**](#)
- [!\[\]\(3278d6283d12f18012b5aa7d40747611_img.jpg\) **Download Search – Cudy**](#)
- [**User Manual**](#)

[Manuals+](#), [Privacy Policy](#)

This website is an independent publication and is neither affiliated with nor endorsed by any of the trademark owners. The "Bluetooth®" word mark and logos are registered trademarks owned by Bluetooth SIG, Inc. The "Wi-Fi®" word mark and logos are registered trademarks owned by the Wi-Fi Alliance. Any use of these marks on this website does not imply any affiliation with or endorsement.