



cudy PE10 Gigabit PCI-E Ethernet Adapter Installation Guide

[Home](#) » [cudy](#) » cudy PE10 Gigabit PCI-E Ethernet Adapter Installation Guide 

Contents

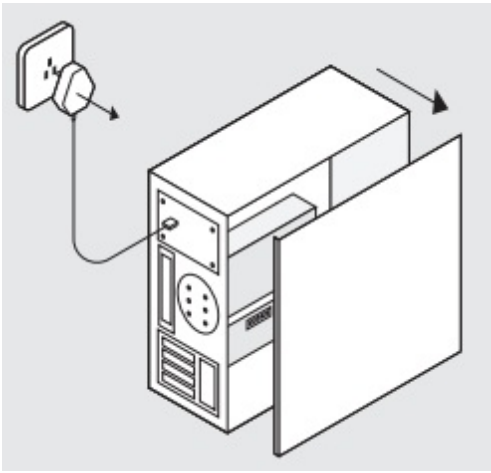
- [1 cudy PE10 Gigabit PCI-E Ethernet Adapter Installation Guide](#)
- [2 Quick Installation](#)
- [3 Read More About This Manual & Download PDF:](#)
- [4 Documents / Resources](#)
 - [4.1 References](#)

cudy PE10 Gigabit PCI-E Ethernet Adapter Installation Guide

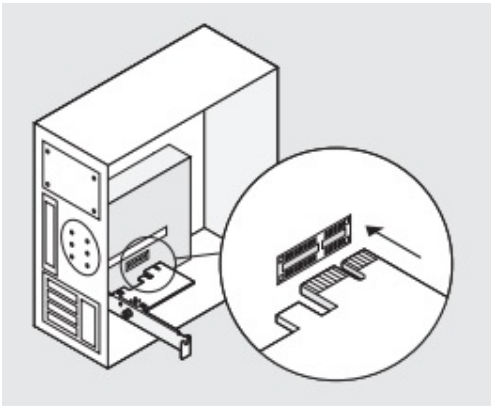


Quick Installation

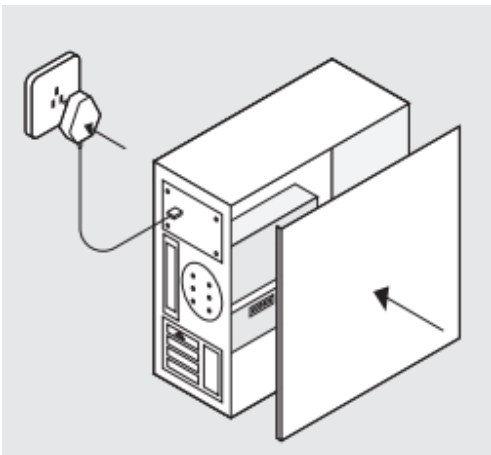
1. Unplug power cable and remove case panel.



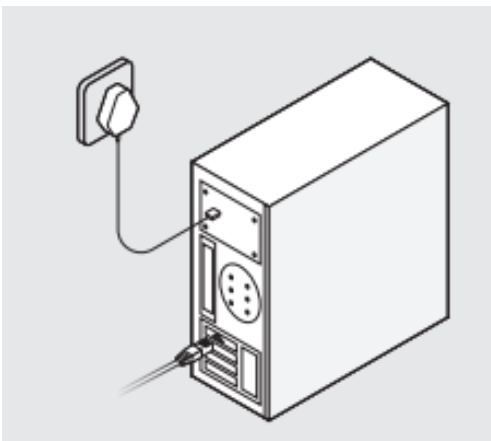
2. Insert the adapter into an available PCI-E slot and secure it with the provided screw



3. Assemble the case panel and power on your computer



4. Plug the ethernet cable and connect to your router or switch.



5. Check if the computer is connected to the network.

If yes, enjoy the Internet directly; If not, download and install the driver by scanning the QR code or enter

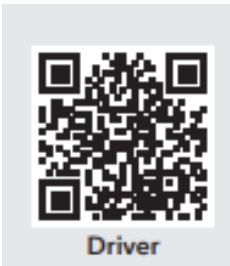
<https://www.cudy.com/pe10> in your browser.



6. Note:


If the adapter is not detected:

1. Check the insertion.
2. Try another slot.
3. Contact support@cudy.com



Read More About This Manual & Download PDF:

Documents / Resources

	cudy PE10 Gigabit PCI-E Ethernet Adapter [pdf] Installation Guide PE10 2.0, PE10 Gigabit PCI-E Ethernet Adapter, PE10, Gigabit PCI-E Ethernet Adapter, PCI-E Ethernet Adapter, Ethernet Adapter, Adapter
---	---

References

-  [Anatel — Agência Nacional de Telecomunicações](#)
-  [Cudy, Your Home and Business Networking Solutions Provider](#)
-  [Download Search – Cudy](#)
- [User Manual](#)

Manuals+, Privacy Policy

This website is an independent publication and is neither affiliated with nor endorsed by any of the trademark owners. The "Bluetooth®" word mark and logos are registered trademarks owned by Bluetooth SIG, Inc. The "Wi-Fi®" word mark and logos are registered trademarks owned by the Wi-Fi Alliance. Any use of these marks on this website does not imply any affiliation with or endorsement.